

# Security Solutions Today

January / February 2014

## COMMERCIAL & OFFICE SECURITY

### Cover Focus

*Security Tools That Can Help Your Business in Unexpected Ways*


### Security Feature

*Panoramic Megapixel Cameras,  
Choosing The Right Video Management Software Solution,  
A Proactive Stance Towards Security & More...*

### In Focus

*An Interview With Scott Schafer,  
Executive Vice President Of Arecont Vision*



Scan this code &  
'Like' us on 



# i ♥ HDCVI

High Definition Composite Video Interface (HDCVI) is an eye-catching technology breakthrough in the industry, providing a new HD solution on the market besides IP and HD-SDI. HDCVI is an optimal solution for megapixel high definition application, featuring non-latent long-distance transmission at lower cost.

## Highlights

- Fast and Fabulous to HD
- Long-distant Transmission
- Zero Video Lose/Real-time Preview
- 3 Signals (Video/Audio/Control) in 1 Coaxial Cable

## Recommended models:



4/8/16 All Channel 1080P  
2U Standalone DVR  
HCVR7804/08/16S



4/8 All Channel 720P Mini  
1U Standalone DVR  
HCVR5104/08H



720P/1080P Water-proof IR  
HDCVI Mini Dome Camera  
HAC-HDW2100S/2200S



720P/1080P Water-proof  
IR HDCVI Camera  
HAC-HFW2100S/2200S



1.3Mp HD HDCVI  
IR PTZ Dome Camera  
SD6C120H-C



1.3Mp HD HDCVI  
PTZ Dome Camera  
SD63120I-HC

CE FC CCC UL ISO 9001:2000

**secutech**  
International Trade Fair for Security, Fire and Safety  
**TAIPEI**

**SECUTECH TAIPEI 2014**  
19-21 Mar 2014 Taipei, Taiwan  
**Booth: NO.4141**

**DAHUA TECHNOLOGY CO., LTD.**

No.1199 Bin'an Road, Binjiang District, Hangzhou, China. 310053  
Tel: +86-571-87688883 Fax: +86-571-87688815  
Email: overseas@dahuatech.com  
www.dahuasecurity.com



# THE ALL NEW MicroDome™



Ultra Low Profile Design



True Day/Night with Mechanical IR Cut Filter



All-in-One PoE and Integrated Lens



Integrated Microphone



Pixel Binning Mode on 3 and 5MP Models



Wide Dynamic Range Available on Some 1080p and 3MP Models



Dual Encoder H.264/MJPEG



Casino Mode™ Maintains at Least 30fps on Some 1080p Models



## World's Smallest All-in-One H.264 Day/Night 1.3–5 Megapixel and WDR Dome IP Cameras.

Arecont Vision introduces MicroDome™ megapixel IP cameras. These small, ultra low profile cameras offer the great features of Arecont Vision megapixel technology like superior image quality, excellent compression and fast frame rates. An innovative spring arm design makes installation a snap: simply slide the camera through the hole and secure the magnetized cover ring with a single screw. Every model comes equipped with a mechanical day/night switcher, and pixel binning on 3- and 5-megapixel models deliver excellent low-light capabilities. Add optional true Wide Dynamic Range and difficult lighting conditions are overcome with MicroDome™. Sometimes smaller is indeed better!



+1.818.937.0700 | 877.CAMERA.8 | avsales@arecontvision.com

Made in the USA

**Arecont Vision**

**10** Years  
2003 - 2013

www.arecontvision.com

Please visit www.arecontvision.com for more information. Copyright 2013 Arecont Vision.

Celebrating 10 Years of Leading the Way in Megapixel Video

# CONTENTS

January - February 2014



CALENDAR OF EVENTS	6
EDITOR'S NOTE	8

#### IN THE NEWS

Around The World	10
Eye On Asia	16

#### COVER FOCUS

Security Tools That Can Help Your Business In Unexpected Ways	18
---	----

#### PUNDIT PERSPECTIVE

22

#### CASE STUDIES

Commercial & Office Security	26
General	56

#### SECURITY FEATURE

Panoramic Megapixel Cameras Set New Benchmarks For Wide Area Surveillance	24
A Proactive Stance Towards Security	52
Choosing The Right Video Management Software Solution	75
Keeping It Cool & Functional: Managing The Challenge Of Heat In Surveillance Cameras	78

#### IN FOCUS

80

#### PRODUCTS

83

Make sure the bad doesn't happen  
so the good can. Anywhere. Anytime.



When you're responsible for the safety, security and everyday function of a big city, you have your hands full making sure the bad doesn't happen so the good can. At Axis, our deep experience in city surveillance gives us invaluable insight into the complexity of what you're facing every minute of every day.

That's why you can rely on Axis city surveillance solutions for dependable, crystal-clear HDTV video in real time anywhere you need it.

It's easy to coordinate your whole surveillance system centrally – and even share live video. Plus, as the world leader in network video, rest assured Axis brings you a future-proof solution that's ready for today's smart technology as well as tomorrow's.

Axis city surveillance solutions – securing everyday life.

**Get the Axis picture. Stay one step ahead.**  
Visit [www.axis.com/citysurveillance](http://www.axis.com/citysurveillance) or email [contact-sap@axis.com](mailto:contact-sap@axis.com) for more information.



**HDTV**  
NETWORK VIDEO

HDTV quality • Excellent zooming capabilities • Rugged outdoor cameras  
• Vandal-resistant • Sharable live video • Future-proof

**AXIS**  
COMMUNICATIONS

**Publisher**

**Steven Ooi** (steven.ooi@tradelinkmedia.com.sg)

**Editor**

**Sharon Kaur** (sst@tradelinkmedia.com.sg)

**Group Marketing Manager**

**Eric Ooi** (eric.ooi@tradelinkmedia.com.sg)

**Marketing Manager**

**Felix Ooi** (felix.ooi@tradelinkmedia.com.sg)

**Marketing Executive**

**Griselda Wong** (griselda.wong@tradelinkmedia.com.sg)

**Head Of Graphic Dept/  
Advertisement Co-ordinator**

**Fawzeeah Yamin** (fawzeeah@tradelinkmedia.com.sg)

**Graphic Designer**

**Siti Nur Aishah** (siti@tradelinkmedia.com.sg)

**Circulation**

**Yvonne Ooi** (yvonne.ooi@tradelinkmedia.com.sg)



Designed by Fawzeeah Yamin  
Image by: Tower Bridge Properties

Printed in Singapore by KHL Printing Co Pte Ltd.

**Security Solutions Today**

is published bi-monthly by  
Trade Link Media Pte Ltd  
(RCB Registration No: 199204277K)  
101 Lorong 23, Geylang,  
#06-04, Prosper House, Singapore 388399.  
Tel: 65-68422580  
Fax: 65-68422581  
ISSN 2345-7104 (Print)

The magazine is available free-of-charge to applicants in the security industry who meet the publication's terms of control. For applicants who do not qualify for free subscription, copies will be made available, subject to the acceptance by the publisher, of a subscription fee which varies according to the country of residence of the potential subscriber in the manner shown on the right.

The editor reserves the right to omit, amend or alter any press release submitted for publication. The publisher and the editor are unable to accept any liability for errors or omissions that may occur, although every effort had been taken to ensure that the contents are correct at the time of going to press.

Views and opinions expressed or implied in this magazine are contributors' and do not necessarily reflect those of Security Solutions Today and its staff. No portion of this publication may be reproduced in whole or in part without the written permission of the publisher.

**ANNUAL SUBSCRIPTION:**

- Surface Mail:**  
Singapore - S\$40 (Reg No: M2-0108708-2 Incl. 7% GST)
- Airmail:**  
Malaysia/Brunei - S\$80  
Asia - S\$120  
Japan, Australia, New Zealand - S\$150  
America/Europe - S\$150  
Middle East - S\$150

**ADVERTISING SALES OFFICES**

**Head Office:** Trade Link Media Pte Ltd.  
(RCB Reg. No: 199204277K)  
101 Lorong 23, Geylang, #06-04, Prosper House, Singapore 388399.  
Tel: 65-68422580; Fax: 65-68421523, 68468843, 68422581.  
Email (Mktg): info@tradelinkmedia.com.sg

**India:**  
Mr. Avneet Singh  
Mark Excellence Business Management  
C317 / 8 Inlaks Nagar, C.H.S.  
15 Yari Road  
Versova, Andheri (West)  
Mumbai  
India  
Tel: +91-22 325 81 747  
Fax: +91-22 263 96 204  
avneet@markexcellence.com

**Japan:**  
T Asoshina/Shizuka Kondo  
Echo Japan Corporation  
Grande Maison, Rm 303,  
2-2, Kudan-Kita, 1-chome,  
Chiyoda-ku, Tokyo 102,  
Japan  
Tel: 81-3-32635065  
Fax: 81-3-32342064

**Korea:**  
MCI  
Rm. 103-1011,  
Brown Stone, 1330,  
Baeseok-dong, Goyang-si,  
Gyeonggi-do,  
Korea 410-907  
Tel: +82 2 730 1234  
Fax: +82 2 732 8899

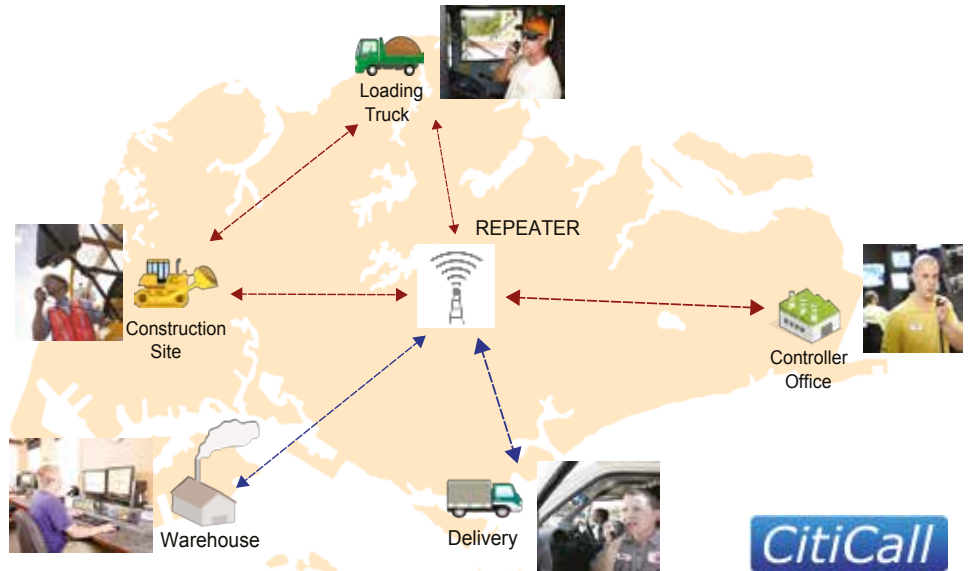
**Italy/Switzerland:**  
Arch. Aldo Cacchioli  
Publistein di  
Galli-Cacchioli & Co.,  
Via Borghese 11  
CH-6600 Locarno  
Switzerland  
Tel: 41-91-7516910  
Fax: 41-91-7517109  
info@publistein.com

**BEST PRACTICES THAT REDUCE COST AND RISK OF DEPLOYMENTS ENHANCED BY RADIO COMMUNICATION.**

**ADVANCE DIGITAL TWO-WAY RADIO COMMUNICATION SYSTEM.**

Under good and strong partnership between JVCKENWOOD and CitiCall Communication Pte Ltd, Nationwide Digital Two-Way Radio Communication System is now available in Singapore! Instant and secured voice communication in many variety ways of use enables you to exchange the information of current traffic condition, delivery transition and any emergency.

Sharing information in group communication will improve the efficiency and productivity of business.



**Wide Area Digital Radio Service**

**FOR CONSTRUCTION SITE AND MATERIALS TRANSPORTATION.**

Radio Communication enables you to make wide area calls with your staffs seamlessly whether as individual or a group talk.

Especially in an emergency situation, you can instantly communicate with your staffs in warehouse, office or delivery staff to share updated information.

And at the same time, you are able to response quickly to meet and solve the critical situation all the times.

As a result, it will strengthen staffs teamwork as well as maximize productivity.

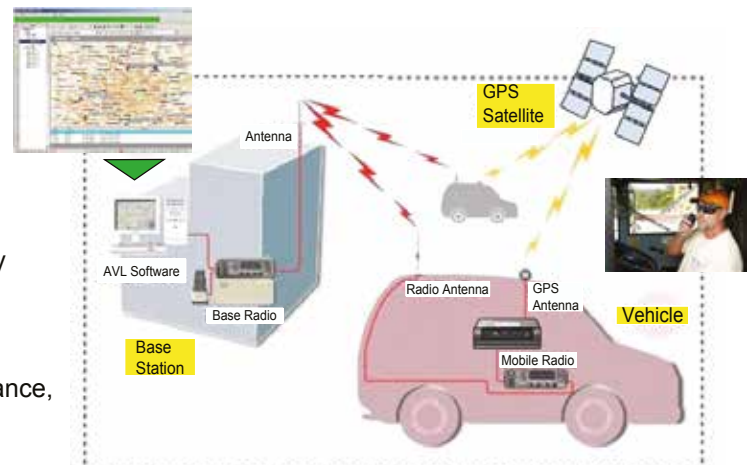


**GPS INTEGRATION AND FLEET TRACKING FOR DELIVERY AND DISPATCHING SERVICES.**

By adding GPS function on the Radio Communication, you can use Fleet Tracking to monitor the location of your each vehicle on the road through a map on your office PC.

Operator is able to grasp the location of each vehicle instantly through the system. And then, dispatch arrangement will be smoother, timely and more efficient.

Voice communication between each vehicle and between the operator and each vehicle is also available for route guidance, emergency call, exchanging information of the current traffic conditions, etc.



**JVCKENWOOD Singapore Pte. Ltd.**

1 Ang Mo Kio Street 63, Singapore 569110  
 Tel : (65) 6496 4500 Fax : (65) 6496 4501/509  
 Email : [comsales@sg.jvckenwood.com](mailto:comsales@sg.jvckenwood.com)  
 Website : <http://www.kenwood.com/sg/com/>

**CitiCall Communications Pte Ltd**

51 Goldhill Plaza #07-10/11  
 Singapore 308900  
 Email : [sales@citicall.net](mailto:sales@citicall.net)  
 Website : <http://www.citicall.net>

# Calendar Of Events



## Intersec 2014

Date: 19 – 21 January 2014  
Venue: Dubai International Convention and Exhibition Centre, Dubai  
Contact: Andreas Rex  
Organiser: EPOC Messe Frankfurt GmbH  
Tel: +971 4 389 4500  
Email: andreas.rex@uae.messefrankfurt.com  
Website: www.intersecexpo.com

## Secutech Taiwan 2014

Date: 19 – 21 March 2014  
Venue: Nangang Exhibition Centre, Taipei Taiwan  
Contact: Echo Lin  
Organiser: Messe Frankfurt New Era Business Media Ltd.  
Tel: +886 2 2659 9080 ext. 761  
Email: Echo.lin@newera.messefrankfurt.com  
Website: <http://www.secutech.com>

## Safety & Security Asia 2014

Date: 28 – 30 April 2014  
Venue: Marina Bay Sands, Singapore  
Contact: Chloe Tan  
Organiser: Conference & Exhibition Management Services Pte Ltd (CEMS)  
Tel: +65 6278 8666  
Email: chloe@cems.com.sg  
Website: <http://www.safetysecurityasia.com.sg>

## Asian Securitex 2014

Date: 7 – 9 May 2014  
Venue: Hong Kong Convention & Exhibition Centre Hall 1  
Contact: Karina Yu  
Organiser: Hong Kong Exhibition Services Ltd.  
Tel: +852 2804 1500  
Email: exhibit@hkesallworld.com  
Website: <http://www.asiansecuritex.com>

## Secutech Thailand 2014

Date: 3 - 5 July 2014  
Venue: Bangkok International Trade and Exhibition Centre  
Contact: Tina Chang  
Organiser: Messe Frankfurt New Era Business Media Ltd.  
Tel: +886 2 2659 9080 Ext. 665  
Email: stth@newera.messefrankfurt.com  
Website: <http://www.secutechthailand.com>

## Secutech Vietnam 2014


Date: 20 - 22 August 2014  
Venue: Bangkok International Trade and Exhibition Centre  
Contact: Sandra Chen  
Organiser: Messe Frankfurt New Era Business Media Ltd.  
Tel: +886 2 2659 9080 ext. 761  
Email: Sandra.chen@newera.messefrankfurt.com  
Website: <http://www.secutechvietnam.com>

## IFSEC Southeast Asia 2014

Date: 11 - 13 September 2014  
Venue: Kuala Lumpur Convention Centre  
Contact: TJ Tan  
Organiser: UBM plc  
Tel: +6-03-2176 8788  
Email: tj.tan@ubm.com  
Website: <http://www.ifsecsea.com>

## Security China 2014

Date: 28 - 31 October 2014  
Venue: China International Exhibition Centre (New Centre)  
Contact: Tony Lee  
Organiser: China Security and Protection Industry Association  
Tel: +86-10-51920615  
Email: bizcspia@yahoo.com.cn  
Website: <http://www.securitychina.com.cn>



Tyco grants businesses  
peace of mind.

Even remotely.

Keep tabs on your businesses wherever you are. Tyco provides businesses with the peace of mind that comes from being secured by one of the world's leading integrated fire and security solutions providers. For every business and need, Tyco delivers innovative customized solutions, harnessed from our global network of technology and resources to save lives, improve businesses and protect where people live and work.

**Learn why businesses around the world trust Tyco. Visit [www.tyco.com](http://www.tyco.com)**

Our business brands:



**WORMALD** *tyco*  
Marine Solutions

*tyco*  
Retail Solutions

*tyco*  
Transportation Solutions

**Safer. Smarter. Tyco.™**

**tyco**



# Editor's Note

Dear Readers,

Happy New Year! I hope you had a great New Year's celebration and are re-charged for the year ahead. Welcome to the very first issue of SST in 2014.

This issue covers 'Commercial & Office Security'. Our cover story explores the security tools that can help your business in unexpected ways and is penned by Jay Hauhn, Chief Technology Officer & VP of Industry Relations from Tyco Integrated Security (pg. 18).

We have also included four enlightening Security Feature articles that discuss the great uses of Panoramic Megapixel Cameras, give you tips on choosing the right video management software, show you methods that you can use to avoid the cyber vulnerabilities of network connected printers as well how you can best manage heat in surveillance cameras.

We are also delighted to feature an exclusive interview with Arecont Vision's Executive Vice President, Scott Schafer (pg. 80). Our Pundit Perspective section in this issue features astute perspectives from security experts from organizations such as Emulex, Telstra, HID Global, as well as Zebra Technologies who discuss the security challenges that businesses face today and how they can become more resilient (pg. 22). This issue also includes a wide selection of products and case studies for your reference (pg. 83).

It is imperative that we never lose sight of the importance of security in all aspects of our lives. I hope this year will be safe and fulfilling for you!

Have a great read...!

Sharon Kaur  
Editor



# COMPACT WITHOUT COMPROMISE

When you need Full-HD performance but require a discrete, compact size, the Panasonic SW-158 and SF-138 mini-dome cameras are the perfect solution. Offering a versatile design without compromising Panasonic's renowned picture quality, these cameras will deliver in the most testing environments.



## COMPACT MINI-DOME CAMERAS

- Full-HD 1080p images up to 30 fps
- 3.1 Megapixels high sensitivity MOS sensor
- SDXC/SDHC/SD Memory card slot
- Built-in Microphone
- VIQS Technology



WV-SW158

IP66  
standard



WV-SF138

## VIQS TECHNOLOGY: VARIABLE IMAGE QUALITY ON SPECIFIED AREA

### VIQS Technology

VIQS technology delivers Full-HD performance, requiring less bandwidth and smaller data storage capacities than conventional cameras. VIQS cameras allow you to vary the compression rate and image quality, so you can record important areas in Full-HD and all other areas at a lower resolution.



<http://security.panasonic.com>



<http://www.facebook.com/PanasonicNetworkCamera>

**Panasonic Systems Asia Pacific**

2 Jalan Kilang Barat

7th Floor Panasonic Building

Singapore 159346

Tel: +65 6270 0110 Fax: +65 6276 0330

E-mail: [biz.prod@sg.panasonic.com](mailto:biz.prod@sg.panasonic.com)

[www.panasonic.net/security](http://www.panasonic.net/security)

**Panasonic**

## HID Global Enhances Proven FARGO Direct-to-Card Printer Line With Built-in Encoding, Faster Speeds And Optional Wi-Fi



**H**ID Global®, a world leader in secure identity solutions, recently unveiled a major update to its FARGO® Direct-to-Card (DTC®) printer line that significantly expands the secure issuance capabilities for small, medium and large private and government organizations producing ID, access control, payment and loyalty cards. One of the most widely-adopted printer/encoder lines on the market, the company's enhanced FARGO DTC printers now feature an embedded multi-technology iCLASS SE® Encoder to simplify card technology migration and personalize large ID card batches, all from within the printer. The DTC portfolio also includes expanded in-line personalization features that offer faster speeds and increased flexibility with the optional wireless accessory module that allows users to issue cards at anytime, from anywhere.

"Since its original launch in 2010, our FARGO DTC line of printers have been relied on more than any other brand to produce hundreds of millions of secure identification credentials around the world," said Craig Sandness, vice president of Product Marketing, Secure Issuance with HID Global. Enhancements to HID Global's proven DTC line are designed to further streamline and improve card and ID issuance while making it easier to enrol, personalize and issue higher volumes of cards with faster throughput and a variety of new security, encoding and mobile issuance options.

Key features include, in-line Physical Access Control Data Programming/Encoding, Faster Print Speed and "Anytime, Anywhere" Mobile Issuance. HID Global's latest FARGO DTC portfolio includes four printers namely: the FARGO DTC1000Me monochrome printer, FARGO DTC1250e colour printer, FARGO DTC4250e and DTC4500e professional-grade colour printer. These printers offer customers a variety of options for fast, affordable, secure card issuance. Each printer features AES-256 data encryption support, can be specified with a built-in iCLASS SE encoder and can be used with HID Global's Wi-Fi accessory for mobile card enrolment and issuance. The new printers join one of the industry's broadest lines of trusted, fully interoperable secure issuance products and now include an extended three-year manufacturer's warranty which matches the proven quality and reliability of the company's sixth-generation DTC technology.

The enhanced FARGO DTC printers are available immediately. Please visit [www.hidglobal.com](http://www.hidglobal.com) for more information. **SST**



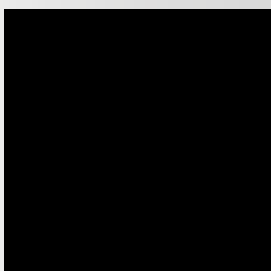
# Safety is not expensive it's priceless



## FLIR FC-Series S

Extremely affordable, network-ready fixed mount cameras

FC-Series S thermal security cameras let you see intruders and other threats to your facility clearly in total darkness and in bad weather. Fully enabled for control and operation over digital and analog networks, FC-Series S thermal imaging cameras are available in 320 × 240, and high-resolution 640 × 480 formats.



Normal vision



Thermal image



If you want to have more information about the FLIR FC-Series S or any other FLIR thermal imaging camera please contact:

### Asia Pacific Headquarters

HONG KONG

FLIR Systems Co. Ltd.

Room 1613 -16, Tower 2,

Grand Central Plaza,

No. 138 Shatin Rural Committee

Road,

Shatin, New Territories, Hong Kong

Tel : +852 2792 8955

Fax : +852 2792 8952

Email : [flir@flir.com.hk](mailto:flir@flir.com.hk)

[www.flir.com](http://www.flir.com)

The images displayed may not be representative of the actual resolution of the camera shown. Images for illustrative purposes only.

## Thermal Imaging In High Definition At Intersec

**A**t Intersec 2014, FLIR Systems will present the latest addition to the Border Security and Coastal Surveillance product line; The HDC thermal imaging camera, now providing more details at a long range with its High Definition 1280 x 720 detector.

Using a cooled detector, the FLIR HDC provides exceptional long-range performance with detection of man-sized targets beyond 18km and vehicles beyond 22km. The system also supports continuous zoom to maintain situational awareness with target focus in both a wide field of view and during zoom for effective target assessment. This capability

ensures that users always have an optimized field of view for targets at any range.

The system also features the new FLIR Image Processing Engine with advanced algorithms developed to generate a perfect picture with minimal adjustment and includes features such as DDE (Digital Detail Enhancement) and CRISP (Clear regional image sharpness). Where DDE is designed for creating a perfect image in high contrast scenes, CRISP does the same in low contrast scenes. Auto perfect mode creates a clear image in any circumstance.



Developed under the unique FLIR CDMQ process (Commercially Developed, Military Qualified), the FLIR HDC delivers a military quality system, designed to work twenty-four hours a day, seven days a week with unmatched reliability.

Following its introduction in May 2013, FLIR Systems will also present the FC-Series S at Intersec. The FC-Series S are low cost but industrial quality thermal imaging cameras in a compact package, available in 320x240, and high-resolution 640x480 formats. FLIR Systems will present the latest developments in thermal imaging at stand 131C in the Sheikh Saeed Arena. **SST**



Actual range may vary depending on camera set-up, environmental conditions, user experience and type of monitor or display used. Assumptions: 50% probability of achieving objective at specified distance given approximately 2°C temperature difference and 0.82 / km atmospheric attenuation factor. DR according to MIL-STD-181C.

## 120 Mudo Retail Stores Around Turkey Running Axxon Next Video Management Software

**M**udo is a leading Turkish retailer, offering clothing, accessories, furniture and home decoration products at 120 locations throughout Turkey. The Mudo brand includes Mudo Collection, Mudo Concept, Mudo Accessoires and Mudo Outlet. Under the guidance of its founder, Mustafa Taviloğlu, Mudo has grown from its launch in 1964 as a small gift shop to become a major brand in today's Turkish retail marketplace. A long-time proponent of AxxonSoft software, global partner Axis Communications has deployed 1,920 cameras in 120 Mudo stores around Turkey, cementing both companies' active role on the Turkish security market with this challenging and well-implemented project.

The features of the Axxon Next video management software (VMS) empower Mudo to handle security management elegantly and reliably, with outstanding video analytic and mobile capabilities. Now every Mudo store manager can view live and recorded HQ video from the store on an iPhone, iPad or any Android device, even when traveling abroad. The touchscreen interface allows even non-IT staff to easily operate the VMS. Mudo has approved further extension of the project to new stores as they are built, marking a long-term relationship that has already brought significant results.

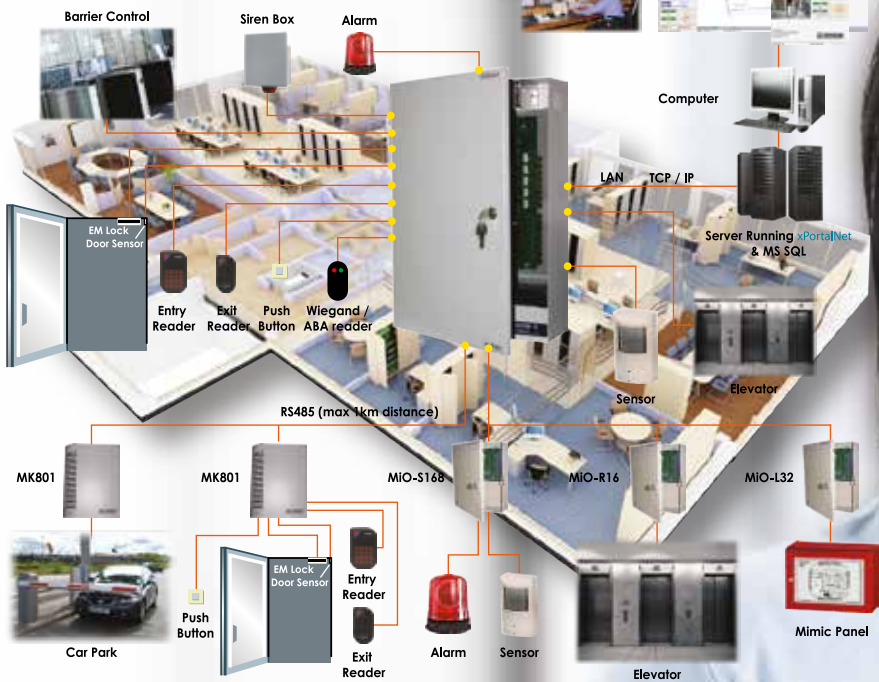
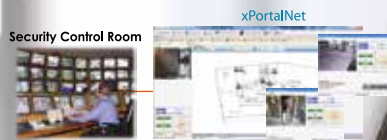
# MicroEngine®

Integrated Security Systems

## The Leading Brand in Security Solutions



- PoE Controller
- CCTV Integration with Selected International Brand
- OPC Integration Module
- DesFire Reader



### Projects



Commercial / Complex



Factory



Condominium



DesFire Reader



Dual Redundancy Module



Plato Reader - Slim Card Reader

600+ readers ward access & security system on SQL Server for hospital and many more ...

[enquiry@microengine.net](mailto:enquiry@microengine.net)

[www.microengine.net](http://www.microengine.net)



Our Office



REG No. 44831281647

## Bosch Security System's New EN54 compliant Fire Panel UGM 2040 Now With VdS Certification

**B**osch Security Systems has further developed its Universal Security System, and now presents the new UGM 2040 BMA model – a modular large-scale unit for complex fire alarm systems. The central server is capable of managing up to 200,000 data points, either via serial data paths or Ethernet as required. This makes it particularly suitable for large companies with a decentralized system structure, such as airports, banks, energy supply companies or large plants. The new fire panel UGM 2040 has been awarded VdS certification (G 213071) and conforms now also to EN54-standards.



errors during operation.

Thanks to its networking via Ethernet, the UGM 2040 bridges the gap between present and future fire alarm systems. The integrated serial interfaces permit the UGM 2040 to connect to existing fire detector systems or subsystems. The Ethernet standard is manufacturer-independent and is used worldwide. It serves as a common communication system

The fire panel is operated centrally via up to ten colour touchscreens for each system node. These touchscreens can either be integrated into a 19-inch system cabinet or positioned on a base for use in different locations. It offers scenario-oriented, intuitive operation including full text searching and numerous filter functions, providing a clear overview of even complex systems and rapid processing of alarm messages. The display is fully compliant with all regulations and precisely defined user rights helps to avoid

to which additional functions, such as access control systems or video surveillance technology, can be linked via gateways or routers. Data is transferred and processed more quickly via Ethernet than in serial data transmission via telecommunication cables. This will enable future value-added services to be implemented in fire detection technology. One example here is a preventative diagnostics in sensors, allowing individual replacement and maintenance tasks to be planned more effectively. The UGM 2040 can equally serve as a central, cross-system control unit for automated processes in distributed, connected subsystems. In the event of a fire, for example, the system can be used to activate specific approach routes for the fire brigade from a central workstation. **SST**

## Axis Communications Receives The 'Prix d'Excellence 2013' Award

**A**xis Communications was recently awarded the Prix d'Excellence 2013, by the Swedish Chamber of Commerce in France. Axis received the award for its successes in the French market, for its innovative strategy and for its significant contribution to developing the security market. The jury's choice was based on the fact that Axis has made significant efforts to educate the French security market thanks to its innovative strategy, its exceptional ability to listen to customers, its agility and its open approach to a traditionally closed market. Axis works closely with hundreds of software and hardware developers in order to ensure integration of its technology, and in this way aims to improve safety and security for everyone.

Today Axis has a strong and firmly established presence

in France. Axis has a network of 4,000 partners that receive technology and sales training from Axis, which ensures a high level of service to end-users. Axis' research and development department, based in Southern Sweden, employs French engineers who participate in the development of global security solutions. Axis established a presence in France in 1996 and in the same year, the company invented and launched the first network camera, which revolutionized the traditional camera surveillance market and initiated the shift from analog to digital technology. The prize-giving ceremony took place on Monday, December 2, in the evening during the yearly gala event for the Swedish-French business community in Paris, France, organized by the Swedish Chamber of Commerce in France in collaboration with the Swedish Embassy. **SST**



# iProSecu for Your Security

Recording Software & CMS



IP Camera

## All You Need



Mobile App  
Push Video



4/9/16/25chs NVR with **Plug&Play**

**intersec**

1/19 ~ 1/21, 2014 Booth No.: 52-241C

**secutech**

International Security Expo  
3/19 ~ 3/21, 2014 Booth No.: 6418



**IFSEC**International  
6/17 ~ 6/19, 2014

**iProSecu**  
www.iprosecu.com

9F-3, No.171, Sec.2 Datong Rd., Sijhih Dist., New Taipei City, Taiwan  
Tel: +886-2-8692-6996 Fax: +886-2-8692-6997 e-Mail: marketing@iprosecu.com  
For more information, contact us as soon as possible!



## Apacer's SFD 25A Cloud-Based SSD Overcomes Bottleneck Of Big Data Access

Taiwanese manufacturer, Apacer has recently launched a high-end cloud-based SSD - SFD (SATA Flash Drive) 25A, which surpasses SATA 2.0 interface SSD of enterprise servers. With the adoption of the SATA 3.0 transmission interface, SFD 25A achieves double transmission capacity and large storage capacities up to 256 GB. SFD 25A is suitable for on-line storage in cloud storage centres to save the cost of server space so as to optimise its operating conditions which allows for high-speed, stability and power savings.



According to Jeff Lin, Apacer's Embedded Applications business unit director, "Apacer's SFD 25A Cloud-based SSD highlights its performance by the breakthrough in efficiency, boasting a maximum sequential transmission speed up to 475/440 MB/sec and Input/output Operations Per Second (IOPs) up to 70,000. It overcomes the bottleneck faced by traditional hard disks using mechanical hard drives, making it as efficient as Redundant Array of Independent Disks (RAID) consisting of over a hundred mechanical hard drives. The excellent performance of SFD 25A SSD boosts the efficiency of data processing in cloud computing centres, and companies can achieve outstanding efficiency within limited budgets." **SST**

## Sony Introduces New W Series Rapid Dome IP Cameras To Harness IPELA ENGINETM PRO Technology

Sony Electronics continues its commitment to advance the security industry with the launch of four new Rapid Dome IP Full HD/ HD security cameras that feature 30x optical zoom and the industry's, fastest pan speed, highest frame rate, and widest dynamic range.

A wide dynamic range is critical for producing true-to-life picture quality and colour in strong backlight conditions, and the W series is able perform on this point by being the world's first Full HD security camera to feature 130dB of wide dynamic range. This gives operators the confidence to accurately describe and assess a security incident, which is vital in any post incident review or investigation. The cameras are also equipped to perform in severe conditions with the latest IPELA ENGINETM

PRO technology, which is an advanced step up from the award winning IPELA ENGINETM. As part of this new technology, the W series feature set includes: gyroscopic image stabilization to reduce the effect of vibrations during strong winds or when installed near roads, image defogging to increase image visibility under poor weather conditions, focal plane distortion correction to correct image distortion caused by panning and continuous 360-degree pan movement at the industry-leading speed of 700-degrees per second.

Designed for wide area surveillance areas such as airports, stadiums, casinos and border control, the W series allows operators to quickly pan to areas of interest in a single quick motion, and identify the situation. No security team would want to be in a "blink and its gone" situation, and the W series prevents this by shooting at twice the number of frames as conventional IP cameras. The 60fps gives the operator more details to analyse when stepping frame by frame through the video, making a difference in identifying a person or an object in question. The SNC-WR630 and SNC-WR600 are rated for indoor use with full HD and HD resolution respectively, while the SNC-WR632 and SNC-WR602 unitized models are IP66 rated for outdoor use with full HD and HD resolution respectively. The cameras will be available in the Asia Pacific region from January 2014 onwards. **SST**



SNC-WR600 and SNC-WR630  
(similar design)



SNC-WR602 and SNC-WR632  
(similar design)

## Dahua HDCVI Academy — A Gateway For Partnership And Information

**D**ahua Technology's HDCVI Academy, a microsite of Dahua's official website, is now online. HDCVI Academy is an ideal gateway to get access to more HDCVI information, providing an open platform for propagation and opinion exchanges on HDCVI technology and information related. The website provides the latest information on HDCVI, including technical updates, product information, open forum discussions and etc. in order to educate the market that the HDCVI solution could be beneficial in the long run, offering convenience and great potential for HDCVI.

"We are open to working with security professionals, promoting HDCVI technology around the globe through the joint efforts and allowing more suppliers, installers, system integrators, even end-users to better understand the benefits of it," said Tim Shen, marketing director at Dahua Technology. "HDCVI Academy is designed to be an ideal portal for our partners. Knowledge from product, chipset, technology, installation to application is all included, allowing our partners to have extensive and profound information of HDCVI." At the HDCVI

Academy, registered users are able to download HDCVI documents and tools, such as white papers, SDK, testing reports, brochures and even have the access to online forums.

HDCVI is short for High Definition Composite Video Interface technology, featuring over-coaxial-cable analog HD video transmission, allowing reliable long-distance HD transmission at lower cost. Some highlights of HDCVI include:

- New and Easy solution to HD (1080p & 720p) in the conventional analog way.
- Long-distance Transmission (500 meters by using 75-3 cable transmission)
- No latency for an outstanding real-time performance and maintains the original image quality
- Three Signals (video, audio and control) over one cable transmission.

Please visit HDCVI Academy at [www.dahuasecurity.com/hdcvi/](http://www.dahuasecurity.com/hdcvi/) for more information. **SST**

---

## Samsung And Fingerprint Partner To Create Mobile Play And Learn Network for Kids

Samsung Electronics Co., Ltd., a global leader in digital media and convergence technologies, and Fingerprint, a kids' mobile technology company, recently announced that they are co-developing a kids' mobile app network enabling play-based learning for kids three to seven years old. Expected to launch in Southeast Asia and Oceania in Q1 2014, the new service on select Samsung devices offers a safe and fun environment for kids to play and learn. Parents can create a family account for multiple children and receive personalized reporting, content recommendations and access controls for each child.

The new network is part of Samsung's Kids' Play-and-Learn Content Initiative, a developer-focused program in collaboration with Fingerprint that is designed to drive the creation of play-and-learn Android apps for kids in Southeast Asia and Oceania. To support this initiative and increase the quantity and quality of kids' apps, Fingerprint has also earmarked US\$1 million to support the integration and localization of kids' apps and interactive books globally. The new custom mobile kids' network is part of Samsung's global strategy to deliver content and services that improve the user experience and transcend beyond the device. Powered by Fingerprint technology, the network will take full advantage of Samsung's innovative features. The network will feature an array of Fingerprint-curated content from its fast-growing library of global edutainment titles, including many of Fingerprint's fan favourites, as well as new content developed through the developer initiative.

The initiative hopes to attract new and well established developers designing best-in-class mobile play and learning games and interactive books in English and localized languages, that appeal to the digitally savvy three to seven year old crowd and their parents. **SST**

# SECURITY TOOLS THAT CAN HELP YOUR BUSINESS IN UNEXPECTED WAYS

By: Jay Hahn, Chief Technology Officer & VP of Industry Relations at Tyco Integrated Security



## Businesses today

Video surveillance, intrusion detection and access control has been used for decades to help protect businesses. Today a business owner must efficiently leverage every asset and resource to grow their business. Expanding how you use security systems for different purposes simply takes a little creativity and an open mind. We will help you jump-start your imagination with some ideas that other businesses are using today.

Video technology is often used after the fact to investigate a safety or security incident. Today growing businesses are challenged by reduced profit margins, higher operating costs and more competition for customers. You may wonder if your resources and time could be better leveraged to give your company an added competitive advantage. The good news is it can in many ways. Video can provide an unbiased 24-hour a day, seven-day-a-



week perspective on your day-to-day operation and the visual story to help you make smart decisions. A single specialty camera can provide the information you seek about customer focus, traffic flow, process flow, customer reactions and time-based activity that statistical data cannot duplicate.

Similarly, intrusion detection alarm systems have much more potential than you would think. New technology provides business owners with capabilities to manage their businesses more effectively. Getting real time reports on when your business is open and closed tells you who was first in and last out. This is important management data when analysing business disciplines, customer service and investigating potential security or safety incidents.

The information collected via an access control system can be much more informative than a simple lock and key solution. Controlling and periodically reviewing the patterns of access to your business can tell you a great deal about your operation, disciplines and perhaps risks to your bottom line profitability. Things like quality control, accountability, and supervision quality get a lot more visibility when you have the data to see how your staff is moving throughout your business.

## Five security applications that can help your business and profits

### Quality control application:

Quality control is a business practice that most successful businesses strive to improve. Some companies do this in



a more formal way by attaining internationally recognized ISO certifications. Some companies do it less formally as a matter of pride, company culture or to create a competitive advantage. Finally, some companies are required by law to meet compliance criteria of the products they deliver. Regardless of your reasons, you must have checks and balances that are reviewed on a timely and consistent basis. These include who, when, where and why did people have access to product R&D, manufacturing or processing of your products. Video and access control, when combined, enable audit trails, trouble shooting processes and validation of what occurred. What about human error, machine malfunction or process failure? When something goes wrong, it's wise to have the tools to provide training or correction for your staff. If you are dealing with legal compliance issues, these tools are often required rather than optional.

### **Employee training and coaching:**

Managing your business takes a great deal of your time. It may seem like you "live" at your place of business. What if you have more than one location? Being in two locations at once is impossible, right? Well maybe not. With the growth of smart phones, lower cost data plans, expanded coverage and new video technologies you can actually manage two locations at once. Developing your employees pays dividends in customer service and better decision-making.

Once initial job, safety and orientation training of an employee is completed how do you know new employees deliver the quality you expect in your products and services? Human nature dictates attention to detail, processes and



procedures when supervision is consistently monitoring workflows. Supervisors that help employees focus on proper safety procedures and compliance mandates lower the risk of incurring fines or worse increased worker compensation costs.

### **Time Management:**

If you are a "hands on" business owner, it's probably important to you to closely monitor business operations. You know what your employee's time is worth when you sign off on the weekly payroll, but what is your time worth? Could you use your time more effectively or better monitor the time you pay for, such as employees or subcontractors?

Besides your valuable time, what about travel expenses required to manage your business such as gas, tolls, wear and tear on your car, not to mention the stress of sitting in



traffic? You may have a situation where you need to verify that your system is armed or whether your lights are on or off. These important but simple items can be verified remotely, leaving you time to spend on more important tasks.

So when should you invest in your travel time to gain the greatest returns? When operational data such as irregular opening or closings occur, customer service or safety issues are remotely observed and unauthorized people have accessed parts of your business, today's



security applications can provide the clarity and visibility necessary to help you take action. Using the information to proactively manage problem employees or processes can save you a great deal of time and money.

### **Customer Service:**

Are your customers being treated the way you want and the way they expect? Periodically auditing how your employees service your customers is smart business.

Some thoughts to consider:

- Celebrate and reward excellent customer service when employees go above and beyond and delight your customers. Observe someone doing something right. This type of recognition goes a long way to building team morale, which often results in more loyal customers.
- Are your customer service processes working the way you originally intended them to work? How do you know? How often do you audit those processes?
- Are there customer service issues that need to be addressed in a corrective manner with new employees? Coaching can show staff members a different perspective on how their actions or attitudes impact customer service.

- High employee morale often equates to lower employee turnover rates. Employee turnover is both costly, time consuming and impacts your quality of customer service. More visibility into your operations can help keep morale high because things are functioning properly.

Up-to-date and well-designed video systems allow you to capture, save and export video segments that are worth a thousand words. When employees see themselves in action they are more receptive to constructive criticism as well as praise for a job well done. In our fast-paced culture, video stories have greater impact. These systems can be reviewed remotely so you can look in on your customer service performance regardless of where you are working today.

### Sales Support:

Video can be an enticing draw to potential customers and help seal the deal when you help make an intangible a tangible. Beyond the value proposition of your business services and products is the story of your business. If prospects can't travel to your facility, then bring your facility to them. When prospects see rather than read or hear about your company, you can gain buy-in and interest early in your selling process. Seeing is often believing for your prospects and customers.

Showing prospects your business processes, security measures, quality control checkpoints, quality assurance in shipping, customer service teams at work solving issues, design teams and training facilities can be convincing chapters in your new book of business opportunities. Sales teams that take the time to understand your processes demonstrated by video are more passionate and expressive with new prospects and valued customers. Video helps people connect with your business beyond



the professional proposal and quotes. It can often be the "edge" needed to expand your business with suppliers, partners and affiliates.

Growing your business takes time, sales, customer service, loyal employees and a consistent quality your customers depend on. Successful business owners take time to periodically re-evaluate their critical business success factors. They also view opportunities to improve as a way to create a competitive advantage for their brand. Perhaps the security tools you use today can be used differently to help you grow your business in new ways. **ESST**



### Experts' Commentaries On The Security Challenges That Organisations Face Today & How They Can Overcome These Challenges & Become Resilient

Security operations (SecOps) analysts of large organizations are continuously confronted with new serious, multi-vectored threats. To combat these, SecOps teams must become proactive by finding and eradicating root causes rather than just responding and resolving issues on an individual basis. Security-aware organizations have found that a comprehensive Intelligent Network Recording (INR) fabric accomplishes this.

An INR fabric overlays the physical switched network, monitoring and recording – in a searchable format – 100 per cent of packets with 100 per cent accuracy. This gives analysts the data needed to quickly and successfully investigate, contain and establish the root cause of security events.

The ability to record 100 per cent of traffic at actual line rates is critical to effectively and rapidly determining response and root cause. INRs allow an analyst to run a query through the search engine showing exactly what happened before, during, and after the alarm, allowing them to quickly make an informed decision and respond.

Breaches where data gets out into the public domain are extremely serious and can have a profound impact on customer brand preferences. An INR is the only practical defence for these types of attacks, with the ability to quickly alert the SecOps team to a breach and immediately discover its cause and location.



**Shaun Walsh**  
Senior Vice President of  
Marketing and Corporate  
Development, Emulex



**Nathan Bell**  
Director of Marketing,  
Products & Pricing,  
Telstra Global

Over the last couple of years, we have seen more enterprises embrace cloud computing for the numerous benefits it offers. While cloud computing enables organisations to adopt more streamlined and scalable business models, there are still several cloud security threats businesses must overcome. Some of these include:

**Data Security:** While a vast majority of cloud services have built-in security solutions, it is still important for vendors to apply best-practices with a multi-layered approach with consideration towards security layers embedded on the endpoints accessing those services.

**Data Safety:** Companies who do not own their own network infrastructure, such as data centres, outsource their cloud and storage capabilities to third party vendors, which require a large amount of trust. Cloud vendors have strong disaster-recovery solutions in place at their data centres, to ensure unexpected disasters do not damage data centres irrevocably, or compromise customer data. To avoid the loss of customer data, businesses need to always ensure they have some form of a backup for the data they put in the cloud.

**Data Location:** When businesses outsource their cloud services to a dedicated cloud provider, data may be stored in various geographical locations. If data is compromised, customers require a supplier who can respond in real time and continue uninterrupted services to their end-users.

To tackle the above-mentioned threats to data security in cloud computing, businesses need to adopt a multi-layered approach to security policies - from the brick-and-mortar type of firewalls on individual devices and data centres to securing personal devices using effective Mobile Device Management (MDM) solutions. At the same time, they must be careful to avoid over-complicating security policies resulting in the data becoming inaccessible by users, ultimately leading to expensive fort knox solutions sitting idle whilst users source for third party options to address their requirements.

Lastly, security today has become the responsibility of businesses as a whole as opposed to just the CIO or in some cases the CSO (Chief Security Officer). As businesses adopt a more collaborative and content-sharing model, it is important to maintain the balance on data security, usability, and the elasticity of security policies to adapt to various situations on all levels – including C-suits, managers, and employees. For example, if greater ease of access is required by end-users, they must be willing to sign up to commitments regarding protecting their devices from malwares and other security threats. Similarly if a particular third party cloud application is considered, business leaders must work with CIOs and CSOs to ensure security and disaster recovery policies are in place to prevent any unexpected surprises.

**Experts' Commentaries On The Security Challenges That Organisations Face Today & How They Can Overcome These Challenges & Become Resilient**



**Lee Wei Jin**  
 Director of Sales, ASEAN,  
 HID Global

**P**rotecting employees and assets remains of utmost importance for organizations of all sizes, worldwide, as the threat landscape continues to evolve and attack patterns grow in sophistication.

Organizations face several identity challenges, including providing as “frictionless” an experience for the user as possible, and a secure identity management approach to mitigate risks both internally and externally. Facing these challenges, the identity credentials will evolve along two paths. First the traditional plastic credential will continue to become more secure and useful. And second, rather than make users carry separate cards, keys and tokens, the coming generation of frictionless solutions will embed these onto same credential or mobile device.

The traditional, physical credential will continue to evolve from magstripe cards to prox cards and on to smart cards. The latter will incorporate more layers of visual and digital security. Additionally, smart cards will combine physical and logical access control capabilities so that it can be used to enter buildings, log onto the networks, and gain access to applications and other systems. Converged solutions are more convenient, and greatly improve security by enabling strong authentication throughout the IT infrastructure on key systems and applications.

For optimum mobility, smart cards will also leverage industry-accepted ISO/IEC 14443 contactless communication standards and open software architectures, and will be portable to microprocessors and mobile devices including NFC smartphones.

**O**ver the years, the counterfeit industry has become more complex in their operations and strategies with advancements in technology. This multi-billion dollar industry has risen as a key threat to businesses across a wide-range of sectors ranging from luxury goods and food and beverage to medical supplies and electronic goods.

To address this challenge, businesses are deploying multiple levels of security beginning from the most basic aspects such as the deployment of access cards to safeguard critical facilities and identify guests and employees. Innovative, print-on-demand solutions enable a new generation of “intelligent” access cards that contain various technologies such as barcode, magnetic stripe, smart card contact and contactless, and radio frequency identification (RFID) technologies.

Beyond identification and access control, the ability to track and trace the movement of products and assets is integral to the monitoring of such illicit activities. Advancements in Automatic Identification and Data Capture technologies including RFID tags, provide businesses with greater visibility and control over fraudulent activities that threaten their revenues, brand reputation and customers’ well-being. For instance, we have seen adoption of such technology in the local liquor market in Korea, where it enabled both businesses and the government to authenticate and enforce the distribution of genuine, safe and legal products.



**Dickson Chew**  
 Director, Technical  
 Operations & Product  
 Management, Zebra  
 Technologies Asia Pacific

*We would like to invite Security Professionals to share your opinions and perspectives for the Pundit Perspective section in the March/April Issue of SST! This issue is centred around the Manufacturing & Industrial Security vertical market. The topic we would like you to comment on is this:*

**What are some of the security threats that Manufacturing environments face in the 21st century? What more needs to be done to ensure safety and security in Manufacturing plants?**

Your submission must include

- (A) Commentary on your perspective (not exceeding 200 words) with your Name, Current Job Title and Company name
- (B) A high resolution image yourself

**For Security Professionals who are keen on being featured in this section, please drop me an email with the above-mentioned details to the following email address: [sst@tradelinkmedia.com.sg](mailto:sst@tradelinkmedia.com.sg)**



## Panoramic Megapixel Cameras Set New Benchmarks For Wide-Area Surveillance



**By: Becky Zhou VP of Sales, APAC, Arecont Vision**

### Panoramic megapixel cameras

High definition Megapixel cameras can cover larger areas with fewer cameras while delivering superior detail and improving overall security operations. This translates into lower infrastructure costs and improved overall return on investment (ROI), enabling users to deploy less expensive video systems with megapixel cameras while achieving better performance and functionality. These efficiencies become even more compelling when deploying panoramic view megapixel camera systems.

Securing large areas with adequate camera coverage can be challenging, and the use of pan-tilt-zoom (PTZ) cameras often does not suffice in these applications. A PTZ camera can only be pointed in one direction at a time and can miss important or

threatening events in another part of the coverage area.

Panoramic-view cameras don't miss anything — a single 180 degree or 360 degree panoramic view camera can cover a large area that would require many conventional cameras or multiple PTZ cameras.

The following real-world examples demonstrate how panoramic-view cameras can simplify and lower the cost of a video surveillance system:

- At a gasoline station in South Africa, three Arecont Vision 180 degree panoramic-view cameras provided detailed images of the fuelling islands while an Arecont Vision 360 degree panoramic-view camera kept watch inside the store. The cameras were positioned strategically for wide-area coverage, with the ability to digitally zoom in for a close-up of specific parts





of a larger image – a person’s face or a license plate number – without losing detail.

- At a supermarket distribution centre in Colorado, an Arecont Vision 180 degree panoramic camera was installed outdoors on the side of the building to watch the guard shack, trucking lanes, parking area and shipping/receiving area. The 20-Megapixel day/night panoramic camera provided a complete view of the property, replacing a PTZ camera that provided only a limited angle both for live and recorded views. In contrast, the 180-degree panoramic camera captured the entire scene in high resolution with a much larger field-of-view. A heater-blower enabled the camera to operate in temperature extremes.

- At a police department in New York City, Arecont Vision’s eight-megapixel, 180-degree cameras are installed at the front and back entrance for exterior video coverage. The wide panoramic field-of-view eliminates the costs for additional cameras and pan-tilt-zoom units. The Arecont Vision cameras automatically switch from colour to black and white at night.

- An Arecont Vision 180-degree megapixel camera provided a comprehensive view which enabled

police to keep a look out for illegal dumping at a waste centre in Pennsylvania. The system has made it possible for the police to identify and issue citations to people who illegally discarded unauthorized items. The system could clearly see what people are disposing of and identify their faces and the license plates of their vehicles.

### 180-degree and 360-degree camera capabilities

These examples demonstrate how panoramic cameras enable the user to view and record an entire large field-of-view while simultaneously digitally zooming into multiple regions of interest, something a PTZ cannot do.

Panoramic view cameras are available with 180 degree and 360 degree imaging capabilities, and eight or 20-Megapixel resolutions (which will continue to increase). This allows even larger areas to be viewed with the ability to capture precise details. A panoramic camera with 20-megapixel resolution can replace many analog or standard definition IP cameras to provide comprehensive and continuous coverage of a large area. This includes PTZ cameras which can be pointed in the wrong direction when events of interest occur.

The latest 20 and eight-megapixel panoramic view cameras have also been enhanced with day/night functionality. Using one camera instead of many establishes a new benchmark for cost savings by requiring fewer software licenses, less network infrastructure, and the elimination of the additional poles, cabling and power supplies required for installation.

### Firmly in the Mainstream

Once thought of for use exclusively in specialty applications, panoramic megapixel cameras offer overall performance benefits and cost efficiencies that make them appropriate for a wide range of mainstream video surveillance applications.

Complete and continuous coverage of an area is especially important to ensure that there is forensic-quality video of an event for investigation and/or prosecution. Resolution is also a key aspect of video coverage, whether it’s a parking lot or a city street outdoors, or an auditorium, atrium or other large area indoors or out. High-resolution megapixel cameras can deliver usable video of an event, including details of faces and identifiable license plate numbers, to help improve overall safety and security. **SST**



# Korean Car Manufacturer Finds A Surveillance Solution To Monitor Equipment And Guarantee Worker Safety

## Mission

In 2006, leading Korean car manufacturer KIA Motors built a production plant near the city of Žilina in Slovakia. The communications infrastructure company ANECT was assigned the task of designing an advanced IP-based infrastructure to perform multiple tasks such as server monitoring, security applications, IP TV and more. One of the applications in this infrastructure was a surveillance solution which gave KIA Motors the ability to monitor equipment and guarantee worker safety. The specifications included extreme reliability and safety, excellent video quality and advanced functionality such as easy remote control of the camera angles and data storage functionality.

## The Solution

ANECT built a solution based on Axis network cameras installed directly on the underlying Cisco IP infrastructure. The video feeds from the cameras are received at an onsite monitoring facility including 56 monitors and controlled through advanced technology. Innovations feature touch screen control of the Axis network cameras and seven Advantech servers adding value for the customer with the



possibility of recording of video streams from all cameras for thirty days.

## The Results

The implementation was very smooth mostly due to thorough analysis, high quality components and a smooth implementation process. Also, the surveillance solution was built according to Cisco's AVVID (Architecture for Voice Video and Integrated Data) architecture which resulted in a solution with extremely high reliability and flexibility. The solution has been up and running without any interruptions – performing perfectly.

## Absolute control through monitoring

Today's car manufacturing sites are among the most automated environments in the world. Computers controlling robots and other machinery today build cars faster and with much higher quality than what could be done by hand. But it is also a potentially dangerous environment where the automotive workers and specialists must be protected and operations need to be monitored in order to discover any problems before they cause disturbances to the production line.





Axis network cameras use robust IP technology to send high quality images over regular local area networks. Each camera works as its own server allowing it to operate autonomously and with high reliability. If one camera becomes unavailable, the others keep on working. By connecting a number of cameras into a central monitoring solution, KIA Motors can supervise the material/production flows, make sure safety regulations and procedures are followed and ensure the physical protection of the site.

The Axis network cameras were tested on the Cisco infrastructure before actual implementation at the KIA Motor site. Meanwhile, ANECT carefully planned the

exact location and angle for each camera to maximize the efficiency.

### Top-of-the-line technology and intelligent design

The monitoring system is built on a unified communication infrastructure platform that, apart from data also enables voice and video signal transfer. It is this sharing of different data types in a single IP network that makes it possible for a customer to take full advantage of the IP technology. The high-quality video feeds from sixty five AXIS 213 PTZ, twenty AXIS 221, five AXIS 211, four AXIS 223M, eight AXIS 207, one AXIS 207W, five AXIS 216FD and five AXIS 216FD-V Network Cameras are collected by a state-of-the-art monitoring solution, c-Watch, provided by Canex Connections s.r.o. using seven Advantech servers with disk arrays insuring that material is not lost even if a disk should fail. The solution also includes forty-seven AXIS 292 Network Video Decoders, an AXIS 2490 Serial Server and an AXIS 295 Video Surveillance Joystick.

The information is displayed on 56 smaller flat screen monitors (20-21 inch) and two large plasma screens – all from Samsung. In the current number of cameras and related equipment is also included the added site of Glovis, one of KIA Motors suppliers which opened up their own site next to KIA Motors. **SST**



# US-Based Pharmaceutical Firm Heightens Security And Ensures FDA Compliance



## Background

Amneal Pharmaceuticals, LLC, is a US-based firm that develops, manufactures and distributes generic pharmaceuticals regulated and approved by the U.S. FDA. Known as “Generic’s New Generation,” the company utilizes its newly expanded R&D and manufacturing capabilities to conceive breakthrough developments with lasting impact for a robust product pipeline.

## The Challenge

“We are in the narcotics manufacturing business, so security is top priority,” explained Rob Symbouras, DEA compliance manager and security manager. “We are very security minded, and our security systems must help ensure we comply with strict FDA guidelines to ensure Good Manufacturing Practices, avoid product cross contamination, and guard against sabotage and employee theft.”

## The Solution

Amneal Pharmaceuticals installed Brivo OnAir hosted cloud-based access control and video surveillance management solution at four company locations, covering 125 doors, and managing nearly 1,000 employees and contractors.

It was critical that Amneal was able to prevent unauthorized personnel from entering manufacturing rooms as well as limit access to the specific areas of the facility based on an employee’s job description. For the vaults, where controlled substances are stored, Amneal employs three layers of security—alarm codes, Brivo access control, and requiring two people to simultaneously provide both halves of the necessary access information.

Amneal and Symbouras are clearly satisfied customers. “I can’t imagine how with another type of system if we lost a server and had to re-create all our groups and re-organize and

implement the intricate levels of access we manage. I’m very satisfied, five out of five. I would recommend this system to anybody.”

## Amneal Today

The Amneal installation has an interesting genesis: Symbouras was working for ADT and is the person who sold the original Brivo system





to the company, "I sold the system I would have wanted." Of the nearly 1,000 people under management, Amneal has them divided into 91 groups with different levels, schedules, and locations of access.

The system's intricate level of control is highly valued: "A day doesn't go by that I'm not asked to give or take away access," Symbouras reported. "Recently, I got an email asking how many employees are allowed into a certain room. We have that information at our fingertips, and we have the capability to maintain an intricate level of who can go where and when, and we know where anyone is at any time."

The managed service feature of the Brivo system continues to impress. Symbouras serves as the main system administrator and receives the bulk of the alerts and calls, "When that happens, I reach over for my iPhone and do what I need

to do. Someone has been let go? Locked out? Push a button, done."

For Amneal, remote system management is also a key benefit, "It's easy to just jump on any computer—doesn't matter which browser—no VPN, just log-in and password, and I'm ready to go. Also, my IT Department doesn't need to be concerned for anything about this system—they provide a connection to the cloud and their job is done; no backups, upgrades, maintenance, no headaches." Amneal is in a strong growth phase. Over the next few years, the company estimates they'll add upwards to 75 more doors to their Brivo system. *SST*

# PROMAG™



## More Secure with Mifare DESFire EV 1 feature



### DF750 / DF760 & DF750K / DF760K

DF750 / DF760 & DF750K / DF760K series are available for user's end configuration by applying MIFARE® sector and MIFARE® DESFire® technology. They can be configured to read MIFARE® DESFire cards with MAD3 or MIFARE® MAD1/ MAD2 sector standard in a Mifare® application open system, or can be configured to read the user-defined sector data (Non-MAD) in a user defined closed system.



#### Applications

1. Time attendance
2. Access control system
3. Guest registration system
4. Identity authentication

GIGA-TMS INC. 8F, NO. 31, LANE 169, KANG-NING STREET, HSI-CHI DIST, NEW TAIPEI CITY, TAIWAN  
 www.gigatms.com.tw Tel: 886-2-26954214 Fax: 886-2-26954213 Email: promag@gigatms.com.tw · promag@ms24.hinet.net

# Globally Integrated Enterprise Amps Up Security Measures Across Its 26 Locations In The UK

## Background

IBM is a globally integrated enterprise operating in over 170 countries. IBM United Kingdom's history began on November 19, 1951 and today IBM UK has around 20,000 employees, bringing innovative solutions to a diverse client base to help solve some of their toughest business challenges. In addition to being the world's largest IT and consulting services company, IBM is a global business and technology leader, innovating in research and development to shape the future of society at large. IBM's prized research, development and technical talent around the world partner with governments, corporations, thinkers and doers on ground breaking real world problems to help make the world work better and build a smarter planet.

## The Challenge

IBM and its brand name are globally recognized as a leading US company. While this brand recognition has obvious benefits, the flip side to this is IBM is an easily identifiable target for individual's intent on damaging the US and its perceived assets.

The challenge was to provide IBM with a method of ensuring consistent levels of security across its 26 locations in the UK. IBM needed to ensure better visibility of threats to all of their sites, assets and people. The solution was required to rationalize the number of control rooms, which would generate a rapid return on investment, provide improved efficiency and reduce on-going costs.

IBM wanted to proactively identify trends and irregularities across all the locations, allowing actions to be taken to reduce business risks. They had a number of unconnected systems from a variety of manufacturers over these sites totalling more than 700 security devices. They wanted to reduce redundancy in these security systems, maximizing the investment they had already made.

Finally, the solution needed to be easy to use, ensuring even during a major incident operators were still able to easily navigate and utilize all of its features as well as:

- Reduce security risks
- Increase situational awareness
- Allow for centralized control
- Reduced costs
- Ensure policy compliance
- Operator guidance
- Removed vendor dependency

## The Solution

IBM selected CNL Software's IPSecurityCenter as a platform for their security solution. The solution was selected as a finalist by an independent expert panel in the Security Excellence Awards.

Firstly, IBM realized the only way to achieve their goals was to create a centralised command and control centre, which integrated their entire physical security infrastructure including: access control, CCTV, intruder detection and fire alarm inputs across all locations. Centralizing the security management would allow them to maintain a consistent level of security across all locations. All of the information from the sub system would be collected in this centralized management system.

All of the resulting data needed to be presented in an easy to use interface, ensuring only relevant information was displayed when required. This was presented on individual operator workstations and a strategically placed video wall. Management required detailed reports for strategic decisions; this was accomplished by using the customizable reporting within IPSecurityCenter. Increasing efficiency was part of the requirement. As a result routine tasks were automatically scheduled hourly, daily, weekly or monthly to eliminate human error. Additionally, IPSecurityCenter enabled the transfer of all paper-based policies into automated operator guidance,



which improved efficiency and ensured consistent responses to incidents and events.

### Benefits

IPSecurityCenter has helped IBM convert the information from all their security systems into visual intelligence, which has led to improved situational awareness for all security staff. The workflows within IPSecurityCenter has helped the security staff to provide faster and more effective responses to incident and event management, which has resulted in a reduced level of interruptions to the business. The trend analysis has assisted the security team to identify frequently occurring incidents, allowing management to add resources to reduce these. IBM saw a return on their investment through cost savings within the first 18 months. A price cannot be put on the increased level of security at all of the IBM sites; a single security breach could cause untold damage both financially and to the IBM brand. The impact would affect both customer trust and investor confidence.

### The Future

In the long term, IBM will see increased functionality and further cost savings. Automatically distributed SMS and email messaging will enable more efficient and effective methods of delivering information to the necessary individuals. Using IPSecurityCenter, new security staff will only need to learn one intuitive system therefore reducing training requirements.

The open architecture of IPSecurityCenter will allow the integration of new technology as the need occurs. For example it could allow the use of biometric, analytic technologies and GIS mapping.

Furthermore, the scalability of the system will enable new buildings to be quickly added when required. The system has been stress tested to handle 6.9 million triggers in a 24-hour period, more than enough to meet the demand of an organization the size of IBM. **SST**

# French Cookware And Small Appliance Manufacturer Optimizes Security With Scalable Technology

## Mission

The Téfal Group's main industrial site in France (36 hectares) located in Rumilly, Haute Savoie, has 2,200 employees across 16 buildings. To strengthen its security, optimize the movements of its security staff and, as much as possible, secure its various access points, Téfal was looking to completely overhaul its video surveillance installation. The old analog system in place was inflexible and urgently needed a solution.

## The Solution

The challenge for Axis was to install a centralised system using a specific network for IP video, while keeping the existing analog cameras at the site. To match these specifications, the video surveillance system had to be capable of meeting multiple requirements:

- Use IP technology to enable configuration from a PC.
- Centralize all video streams to rationalize the video surveillance system.
- Keep the existing infrastructure.



## Applications



POS

Medical

Server

Gaming

Tablet PC

## Industrial SSD

S O L U T I O N S

### SFD

SATA Flash Drive

SATA 6Gb/s Interface

Capacity: Up to 256GB



JEDEC MO-297

### SDM

SATA Disk Module

Extended Temp. Support

(-40°C~+85°C)

Capacity: Up to 64GB



7Pin Series

1U Server Series

### CFast

CFast Card



Compliant with CFast 1.0 Specification  
Capacity: Up to 128GB

### Industrial CF

Industrial Compact Flash



[HW write-protect switch]

Extended Temp. Support  
Capacity: Up to 128GB

### Industrial SD

Industrial SD Card



Compliant with SD 2.0 Specification  
Capacity: Up to 32GB

### Industrial microSD

Industrial microSD Card



Compliant with SD 2.0 Specification  
Capacity: Up to 32GB

## Industrial DRAM

S O L U T I O N S



### ECC DIMM (with Very Low Profile Option)

Data rate	Model	Capacity	Voltage	Standard Op. temp	Industrial Op. temp	CL	Layer
DDR3-1600	PC3-12800	2GB~8GB	1.5V±0.075V	0°C~+85°C	-40°C~+95°C	CL11	240pin
DDR3-1333	PC3-10600	2GB~8GB	1.5V±0.075V	0°C~+85°C	-40°C~+95°C	CL9	240pin
DDR3-1066	PC3-8500	1GB~8GB	1.5V±0.075V	0°C~+85°C	-40°C~+95°C	CL7	240pin

- Fixed B.O.M. commitment
- Conformal Coating:  
dump & mould proof & corrosion prevention
- Wide Temperature range [-40°C~+95°C]
- Built-in Thermal Sensor
- Golden Finger 30u"

### SO ECC DIMM

Data rate	Model	Capacity	Voltage	Standard Op. temp	Industrial Op. temp	CL	Layer
DDR3-1600	PC3-12800	2GB~8GB	1.5V±0.075V	0°C~+85°C	-40°C~+95°C	CL11	240pin
DDR3-1333	PC3-10600	2GB~8GB	1.5V±0.075V	0°C~+85°C	-40°C~+95°C	CL9	240pin
DDR3-1066	PC3-8500	1GB~8GB	1.5V±0.075V	0°C~+85°C	-40°C~+95°C	CL7	240pin



SPIE DCCS, an Axis partner and security specialist responsible for the project, deployed the solution per zone. Six zones are now monitored by 70 AXIS 210/211 Network Cameras and four AXIS 241Q Video Servers. All are administered by a Camtrace video recording and management solution.

### The Result

Thanks to the Axis network video installation, Téfal has been able to increase the profitability and effectiveness of its on-site surveillance team, and optimize surveillance with more homogeneous camera coverage across the whole site.

### IP revolutionizes the group's security

As the old analog video surveillance system did not allow security staff to see camera images in real time, each alarm meant a complex verification procedure. The digital system has revolutionized the task of the security teams as they can now control each zone from their PC and thereby gain a considerable time advantage in their work. The video surveillance system also deploys a server to provide security for the factory store (sales outlet for preferential-price SEB products) and combat shoplifting effectively. Finally, the industrial site's entry and exit points, which are sensitive as they are subject to heavy traffic, can all be managed and controlled together.

"Today," said Castan, project head at Téfal, "Cameras seem to be an essential tool for security staff. Somewhat sceptical at the start, they now can't do without it. Being able to access images from their central security post has let them cut their movements on the site by half."

### The Future

In the months to come, Téfal intends to deploy a remote access control system. The Technical Department is working on a project to link this new system to video surveillance. This will allow security staff to open the various access points (portals) directly from their PC. Téfal is now at the point of integrating new Axis network cameras and a new Camtrace server to ensure the protection of certain zones that are currently unmonitored. The three video recorders will be shared on a single screen allowing security staff to operate a single display interface for access to all cameras. **SST**

# Company In Germany Turns Towards Tighter Access Management Solutions For Its Office Space

## Background

Performance Buildings® is a system integrator that provides technology for 'on-demand' offices. It has formed a partnership with Design Offices, an innovative service provider, to successfully design and implement high-end technology solution offerings for tenants of shared office workspaces. Typically, tenants are private companies and public organizations that utilize office space as and when required, without having to commit to full-time rent.

Performance Buildings currently operates in Switzerland, Germany and in the USA. It has ambitious plans to expand across Asia and South Africa. Design Offices is headquartered in Munich and offers a broad range of high-end, shared workspaces for clients seeking to rent temporary office space 'on-demand', as well as short, mid and long term rentals.

## The Challenges

As part of their technology offering for tenants, Performance Buildings and Design Offices were looking for a technology solution provider that met their high standards for a secure access system to the office space that was easy to use and delivered cost benefits.

The key requirements they wanted to focus on were as follows:

- Interoperable, secure, convenient and future-proof access control technology for office spaces
- A cost efficient IP-based solution that could be easily integrated and installed
- Support for their book rooms 'on-demand' functionality, thus providing an open application programming interface
- Allow for a wide choice of custom configurations.
- Ability to allow the use of traditional methods of

secure access, such as smart cards, as well as newer technologies utilising Near Field Communication (NFC) enabled phones for mobile access control

## The Solution

Performance Buildings evaluated HID Global's network access control solutions along with a number of other solutions. However, the decision was an easy one; HID Global was selected as the provider of choice because it was the only company with the ability to support their cutting-edge IT architecture and provide the flexibility that they required.

HID Global was successfully able to address the following key selection criteria:

- Integration into any type of building
- Integration into any type of legacy system
- Capable of providing a flexible approach that could adapt to different types of application scenarios
- Customised service approach
- Completely automated solution
- Interoperable with Performance Buildings' current IP-based architecture, linking all subsystems and their devices

The core solution implemented was HID Global's Edge Reader® ERP40, an IP-based card reader that meets the demands of open architecture, IP-centric environments and provides fully distributed intelligence and decision making right to the door, leveraging the IT infrastructure to the maximum extent possible. "The addition of HID Global's EdgeReader ERP40 provides the access intelligence to do much more than open doors with cards," said Dr. Vishal Mallick, ceo of Performance Buildings. "The fact that it is open and IP-based allows us to integrate the ERP40 device into our IT-centric architecture and use authenticated credentials to drive lighting, climate and audio visual

systems today, as well as room bookings and facility management task allocation in the future.”

In addition, HID Global’s multiCLASS SE®, part of HID Global’s award-winning iCLASS SE® platform, provided tenants flexibility in using a range of new and existing access card technologies, such as contactless proximity cards and smart cards, or more advanced technology such as NFC smartphones to access the office building and rooms. Office visitors could also be provided access to office workspaces via Performance Buildings touch screen that was enabled by HID Global’s EdgeReader to open doors.

Furthermore, HID Global’s EdgeReader also allowed for cost efficiencies, as the initial investment outlay was reduced through the reader’s use of Power over Ethernet (PoE) that eliminates the requirement for additional cabling, separate power supplies and multi-door controllers. Finally, HID Global’s open architecture based OPIN® application program interface (API) was highly cost-effective and required relatively little effort to create a robust integrated solution with EDGE® readers/controllers.

“The EDGE Reader/Controller is the only open IP

solution available on the market,” explained Dr. Mallick. “And with its API, it could be easily integrated into our software and installed. Also, HID Global’s multiCLASS SE readers allow us to have one standardised product for the vast majority of buildings due to its interoperability with a range of legacy and existing smart cards in our facility.” “Identity management touches everything in the Performance Buildings grid.” added Dr. Mallick. “A strong identity management governance structure was required from Design Offices to facilitate a seamless experience for their existing tenants and clients using the facilities ‘on-demand’, including the ability to book rooms and catering services online, open conference room doors, and sign out once their session is over. It was important to offer a wide menu of services to enhance the way we do business.”

“We’re not just offering rooms, we’re offering end-users of the office space – tenants or temporary ‘on-demand’ end-users of the office space, a secure environment where they can work, meet, hold conferences and provide training sessions in a location where they feel comfortable, and for us, which includes offering all the technological solutions they need in today’s modern world,” said Phill Handy, managing director from Design Offices.





“So, for example, we wanted to be able to offer 24-hour access to rooms, automated check-in and check-out services but without having to provide staff or all the paper-based procedures,” Handy explained. “We also wanted people to be able to book rooms on the move, so it was critical that easy-to-use online options were available.”

This broad range of functionality and flexibility supported by HID Global’s solutions allowed Performance Buildings to offer a comprehensive service that catered for different user needs as well as multiple application requirements.

## Results

With a robust system that powered Design Offices’ shared workspaces, Performance Buildings reported that it had seen a return on investment (ROI) within six-months of their deployment in Munich and improved efficiencies thereafter. As the company continues to expand, the use of HID Global solutions will continue to broaden.

The solution has also enabled Performance Buildings to accelerate the on-boarding of four new deployments in different German locations, as it has been able to utilize the experience and expertise gained from this

implementation. This has resulted in cost and time efficiencies. “We were curious about how a large, global company would deal with a small, developing company like us but we were thrilled that HID Global responded quickly and provided us with the level of support and consultation that we needed to progress,” said Dr. Mallick.

Design Offices is delighted with the results. “Using HID Global’s solutions in conjunction with Performance Buildings’ technology is all part of our future expansion plans,” said Handy. “We’re going to take their combined solutions with us when we move to Dusseldorf, Berlin and Hamburg and we’re doing this because it allows us to be more efficient while providing our clients – existing tenants or temporary clients ‘on-demand’ with the security, privacy and ease of use that they’ve been looking for.” “Our end-users who are renting our office spaces love it. It’s easy to use, and allows them to use the online booking system from the road and come to the offices with their PIN code to access meeting rooms whenever they want – they love the flexibility and security,” added Handy. “And we love it because we don’t have to supply staff 24 hours nor all the paper-based checking-in and checking-out, so feedback has been fantastic. For us, this is a confirmation that this is the right product for our different types of clients **SST**

# Financial Services Centre In Texas Upgrades To PIV-Compliant Access Control Solution

## Background

The Financial Services Centre in Austin, Texas is an organization of the U.S. Department of Veterans Affairs (VA) that offers a range of financial and accounting products and services to both the VA and other government agencies.

When the Financial Services Centre and its 300 employees moved into a brand new facility it needed to implement an access control and credentialing system that would both enable it to manage the access of its employees and also comply with FIPS-201, which requires a common identification standard for Federal employees and contractors as mandated by the government thanks to HSPD-12, Homeland Security Presidential Directive 12.

## The Challenge

With few reference points within the U.S. Department of Veterans Affairs, the VA Financial Services Centre would enter uncharted territory as it began the process to implement Personal Identity Verification (PIV) cards as its credentialing solution for all of its employees and contractors.

The project was one of the first of its kind where a government facility planned to use the full capabilities of the PIV card for its employees and contractors to gain physical and logical access to secured



government buildings and computer resources, according to Royce Cox, account manager at Tech Systems' local Austin office. Tech Systems served as the systems integrator for the Financial Services Centre project.

To use the full capabilities of the PIV card, the VA Financial Services Centre needed to implement a solution that could validate each employee's PIV credential, verify the cardholder's identity, and then harvest the data for use with a physical access control system.

## The Solution

The VA Financial Services Centre turned to the pivCLASS Registration Engine from Codebench™, Inc., a

HID Global Company, to provide it with the ability to receive, store, recall and send information in a secure fashion from each PIV card to the physical access control system.

pivCLASS Registration Engine, a software-based solution, is used in conjunction with the Software House C•CURE 800/8000 physical access control system to allow the VA Financial Services Centre to use the PIV card as a single card access control solution facility-wide. Cardholders use the PIV ID card to gain access into the building and verify privileges once inside the facility

"This system allows us to automate the entry of PIV badge information



into the physical security system, ensuring effective access control. Additionally, it allows us to easily grant limited access (areas within the building and time access) to VA employees visiting from other stations, which eliminates the need for visitors to wait for daily passes," said Howard Harrison, VA Financial Services Centre facility manager.

"Also once in the system, as long as there is not a badge change we can grant access on an as visit basis."

In addition to using the PIV cards for internal facility and logical security access purposes, the Financial Services Centre continuously checks the revocation status of the cardholder of the FIPS 201

compliant card on an on-going basis.

"After registering the PIV cards in the VA's C•Cure 800 access control system via pivCLASS Registration Engine, our software revalidates all the certificates that we know about each day," said Geri Castaldo, vice president of Business Development, Federal Identity, Codebench, Inc., a HID Global Company.

"If at some time in the future it finds that a certificate has been revoked, it can go in to the C•Cure system and suspend the card as well as send an email to a distribution list and say that it found a revoked card."

### The Results

Today, the Financial Services Centre uses its PIV cards to manage the access of employees and contractors at its Austin, Texas, facility. In addition, employees also use their PIV cards to log onto their computers, providing for a more secure environment within the facility. **SST**



# Company In Europe Drives Security With HID Global's Smart Employee ID

## Background

Nissan Europe facilitates the design, engineering, manufacture and sale of Nissan cars from locations across 34 European countries. The company's headquarters are in Trappes, Paris and employ over 12,500 staff.

## The Challenge



Nissan Japan implemented a physical access solution, which allowed its employees to securely access its sites using a smart card. Nissan Europe examined this model and decided to take it one step further by introducing a combined logical and physical access solution to improve security across the organisation and produce a single Nissan employee ID card.

Nissan Europe needed a solution that allowed employees to securely access and exchange sensitive information, as well as secure facility access for its 34 European locations.

Up to 30 per cent of employees need secure remote access to the Nissan Europe IT network. These mobile workers insisted on authenticating the same way whether they connect to the network locally or remotely. Nissan Europe also wanted to implement a solution that would easily enable future applications and credentials via a single dual-chip smart card.



## The Solution

Nissan Europe evaluated several card management software and card middleware solutions. Nissan selected HID Global's Smart Employee ID because it was the only field-proven solution that could scale to 100,000 users. It would also securely update smart cards post-issuance to add applications or credentials as Nissan's needs evolved.

The success of HID Global in a project with Nissan in Japan gave Nissan Europe confidence to deploy HID Global's solution.

Following a successful proof of concept conducted, Nissan Europe worked closely with HID Global's team on a two-month pilot project. Initially the team tested

# THE 13<sup>TH</sup> ASIAN INTERNATIONAL SECURITY, SAFETY AND FIRE PROTECTION SHOW & CONFERENCE



[www.asiansecuritex.com](http://www.asiansecuritex.com)

## 7-9 MAY 2014

HONG KONG  
CONVENTION &  
EXHIBITION  
CENTRE

### YOUR ONE-STOP PLATFORM FOR LEADS, EXPOSURE, INSIGHT

- Expand your business in Hong Kong, Macau and Southern China market
- Meet the industry's key players - Heads of security, Retailers, System Integrators, Developers and etc.
- Talk directly to decision makers - 72% of our buyers are from senior management with influential purchasing power
- Network with your targeted trade professionals at Asian Securitex Conference supported by 4 leading security associations & HK Police Force

### BOOK YOUR SPACE NOW!

Co-located with



**4-in-1 Sustainable  
Architecture, Design,  
Building Services and  
Electrical Engineering  
Tradeshow**

[www.build4asia.com](http://www.build4asia.com)

Organiser



Hong Kong Exhibition Services Ltd  
Tel: +852 2804 1500  
E-mail: [exhibit@hkesallworld.com](mailto:exhibit@hkesallworld.com)  
Contact: Ms Karina Yu

Worldwide Co-ordinator



Overseas Exhibition Services Ltd  
Tel: +44 (0)20 7840 2130  
E-mail: [swhite@oesallworld.com](mailto:swhite@oesallworld.com)  
Contact: Mr Shaun White

South East Asia Co-ordinator



International Expo Management Pte Ltd  
Tel: +65 6233 6777  
E-mail: [enquiry@iemallworld.com](mailto:enquiry@iemallworld.com)  
Contact: Ms Violet Lee





the technology in one Nissan Europe site with 30 users; subsequently the pilot extended for another month across additional sites incorporating 300 users. During the pilot phase, six Nissan administrators of HID Global's ActivID® Card Management System (CMS) were fully trained, five databases were replicated and both operator roles and card profiles were implemented.

The team received positive feedback from the pilot and decided to start the full-scale implementation of the project. Nissan Europe implemented the ActivID CMS to manage the issuance and administration of the Nissan ID cards and HID Global's 4TRESS™ AAA Server for Remote Access to enable strong authentication for remote network access.

The team implemented two ActivID CMS servers for Northern and Southern Europe. A new set of card profiles were designed according to Nissan's requirements,



taking into account both the existing cards in Japan and future PKI needs. Customized operator roles were also created to enable operation by local helpdesk and security teams.

In just three months over 5,500 employees could use their Nissan ID cards everyday for both physical and logical access. HID Global was involved in the design and implementation phases of the project and worked closely with the Nissan Europe team to ensure the solution went live as planned.

Nissan Europe was impressed with the smooth integration of HID Global's technology, and the ease of management of card self-service issuance, post-issuance and one-time password authentication to a VPN.

### The Results

Currently, over 7,000 users across 34 European locations are using a smart employee ID card. Each site was responsible for its own deployment, co-ordinated by one single European project manager. Users initialised the cards themselves. The project was heavily supported and praised by the management team.

Communicating and promoting the use of the Nissan ID card to all end-users was vital to the success of the project. The team held internal workshops for all local helpdesk agents, pilot users, executive management and all Nissan Europe ID card users. Marketing collateral was also created and displayed in all offices to remind users that they would be unable to log-on to the network or enter the building without their Nissan ID card. **SST**

# Privately Held Wireless Provider In Mississippi Heightens Security To Protect New Operations Centre



## Background

Headquartered in Ridgeland, Mississippi, Cellular South is the largest privately held wireless provider in the nation. Since it was founded in 1988, the company has received numerous awards for unmatched personal service, unparalleled wireless coverage, innovative products and industry leadership, and has grown to employ 1,100 employees in the Southeast.

## The Situation

When an 80,000 square foot warehouse in a convenient

location became available, Cellular South management decided it presented the perfect opportunity to consolidate the various support functions that were scattered throughout different facilities around the Jackson area. They turned to integrator Alarm One, Inc. to design a security system that would streamline their operations and allow them to focus on what they do best—provide exceptional service to their customers spread across Alabama, Mississippi and Tennessee. Today, the new building houses approximately 300 employees in four independent departments: triage of returned devices, product repair, distribution, and customer care representatives.

## The Challenge

Finding a security system that met all their needs presented several challenges. Because each group uses its own entrance and works independently, the building is in operation from six a.m. until eleven p.m. every day. The unique nature of each group, the varied uses of the space, and the number of different work schedules had to be considered. Alarm One needed to create four separate video, intrusion and access control systems within the massive facility and then merge all those independent systems into one secure central control point.

## The Solution

Inside the operations centre, Honeywell's WIN-PAK® access control software limits who can go where. Customer care representatives don't have access to the warehouse, for instance, and the triage group can move about freely in their area but nowhere else. Each employee has a prox keyfob, and access rights are administered by the individual department managers.

The NetAXSTM web-based access control system is tied into the IT network, allowing managers to log in from the office or access their information remotely from an offsite location. If the VISTA panel sends a fire or intrusion alarm after hours or during the weekend, they can pull up a history of the readers and review the incident. High definition dome cameras at the new operations centre are integrated into the system, along with surveillance cameras at all of the company's 110 retail stores, giving management an easy way to keep



an eye on operations by simply logging on.

In order to disrupt operations as little as possible, the entire project was completed in less than two months. "During the renovations we had a crew of up to eight guys on the job at all times," said Steve Pyle, president of Alarm One. "With more than 50,000 feet of cable involved in the security installation, this project was the largest installation of NetAXS that Alarm One has completed to date."

## Benefits

According to Charles Weldon, operation and sales manager for Alarm One, everyone involved is finding the Honeywell solution to be extremely user-friendly. "We appreciated how quick it was to install and how easy it was to get all the users trained on the system. The employees love how simple it is to operate, and the managers really like how effortless it is to make changes to badges or add new employees with just a point and click."

Kevin Smith, manager of loss prevention for Cellular South, spends most of his days in his office at the Cellular South corporate headquarters several miles away, but says he feels confident in his ability to keep an eye on things at the new facility using the remote capabilities of the integrated system.

"The Honeywell system keeps me connected to all our properties round the clock. If there's an alarm on the weekend, I can sit down at my PC at home and pull up the event history and video for the incident without ever having to go to the facility." **SST**



# DIGITAL ID WORLD

Asia 2014

23 – 24 April 2014, Level 4, Suntec Singapore

[www.terrapinn.com/digitalidasia](http://www.terrapinn.com/digitalidasia)

## The event for digital identification, access control & authentication solutions in Asia



*"The conference is wonderful; this is where experts can share experiences on how to create new quality of secure identification."*

**Ministry of the Interior of Estonia**



*"Our goal in the exhibition is to meet with the existing business partners and to look for new business partners. We are very happy with the outcome of the show as it is very good event for us."*

**ARH Inc**

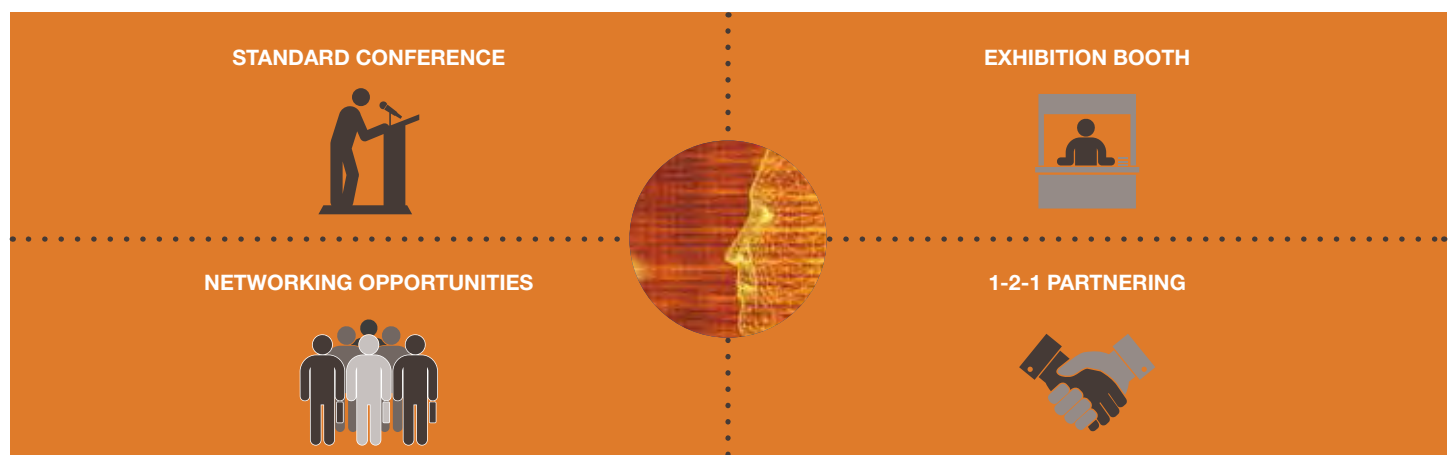


*"This exhibition is fantastic because we get to network with strategic partners and gain face-time with potential buyers."*

**IRIS Corporation**

In 2014, Digital ID World Asia will once again be co-located with Cards & Payments Asia expo and conference. The 2-day event is 100% dedicated to enterprises, governments and various industry verticals involved in the planning, design and implementation of digital identification and information security projects. Raise your profile before, during and after the event by securing limited sponsorship involvement activities at Digital ID World Asia.

Here are just some lead-generation opportunities for you to heighten your profile:



To find out how you can leverage on Digital ID World Asia 2014 as a marketing and branding platform for your solutions, contact Mr. Clarence Lee at [Clarence.lee@terrapinn.com](mailto:Clarence.lee@terrapinn.com) or +65 6322 2776

# Retirement Home In Minnesota Seeks Access-Control Solution For Its Staff And Residents



## The Situation

"In my sixth year as executive director of Friendship Village in Bloomington, Minnesota (MN), it became very clear to me and my staff how time-consuming and unwieldy our old access control system had become" said Rick Meyer. The community opened in 1979, thirty-two years ago, and the existing access control system had been in place for fifteen years. We realized it was at the end of the road; it was clearly time for us to find a more modern and user-friendly system.



## The Solution

After evaluating our limited options with the existing service provider, we referred our problem to Floyd Total Security, a SALTO Inspired Business Partner and system integrator, also located in Bloomington, MN. Continuing Care Facilities are of critical interest for Floyd, and Bill Wood, who heads up the company's electronic locking systems team. His team was charged with helping find the best solution for the needs

of our project and brought SALTO to our attention.

We liked the SALTO system from the start and Ray Satterfield, director of Facility Management, suggested we ask other Lifespace Community facilities to assist in our evaluation. After several group presentations and a couple of site visits, they unanimously recommended SALTO over the other options, as did Gary Conkin, Lifespace development and construction manager, who oversees

and approves all construction projects from the corporate office in Des Moines, IA.

## Outfitting the facilities

Floyd met with the management team to understand how they needed various parts of the system to work to best suit our operation. They made sure we could take advantage of everything that the SALTO System could provide. The Village has just opened a new fitness centre which was also protected with the SALTO locks. Various workers at the facility, like nurses and housekeepers have a range of scheduled time needs, and their access cards have been programmed accordingly.

## Benefits

The Village was previously equipped with three separate systems; a traditional proximity card system on the perimeter and two generations of offline locks on administrative and resident doors. While these were easy for staff and seniors to use, they proved very costly to operate and maintain. The facility has 415 doors with electronic locks for over 1200 cardholders. In order to program the old system to provide access cards for new occupants or to supply replacements for lost cards, a staffer had to carry a laptop with cable to every door lock covered by the new or lost card in order to recode for access. Many hours were lost in resolving these problems.

Furthermore, we were having trouble getting parts and support for our old system. That was a growing problem, to the point where we actually had to ask some of our residents to go back to using metal keys. Not something we desired for a facility that prides itself on being up-to-date in everything!



“With SALTO it was easy. We no longer have to program at the door and we didn’t have to build an infrastructure with wiring through walls; we used the SALTO Virtual Network” said Meyer. “When the locks were installed, of course they required initial programming. But unlike the other options, they don’t require on-going lock re-programming at the door as we make access changes. The SALTO Virtual Network (SVN) pushes and pulls data from our “hot-spot” openings to all the offline locks”.

### Employee cards

The Village has about 285 employees including part-time, on-call, high school, etc. Their eight-person maintenance staff functions as security during the morning and early afternoon, followed by two trained security officers for the afternoon, evening, night and weekends. Cards issued to employees are automatically refreshed and updated when used at any of their seven “Hot-spot” doors, which makes it very easy to meet everyone’s access needs on the fly.

### If a card is lost

When a card is reported lost, there’s no big crisis. The cards are blank, with no tell-tale room number or ID, so someone finding it would have no way of knowing what unit the card gave access to. We simply delete it and assign a new one. Once the original card is deleted, it will no longer provide access to the exterior doors either: access is denied and facilities is notified. The lost card is also added to the blacklist of deleted cards, which eliminates its value at the interior doors via SVN.



### The Results

The installation went well and timelines were met: a week for preparation, loading the software and training, then about four weeks for actual change out of the residence units, with perimeter doors switched over to the new system last. The entire implementation took about five weeks.

Floyd technicians trained The Village’s maintenance personnel on the installation and maintenance of the battery powered door locks. This allowed them to remove and install the devices themselves when they remodel and refresh areas of the facility, a common occurrence with 425 units.

According to Meyer, “this SALTO changeover is probably the easiest such install we’ve ever done. Residents feel safer in their units than they did before. Floyd couldn’t have provided a better or more accommodating crew. Our administrators had ample time to get familiar with the new system and feel comfortable with it”. **SST**

# World's Leading Internet Subscription Service Implements Mobile Access Pilot Program

## Background

Netflix, founded in 1997, is the world's leading Internet subscription service for enjoying movies and TV shows. With more than 27 million streaming members, Netflix serves customers in the United States, Canada, Latin America, the United Kingdom and Ireland. In August 2012 Netflix announced plans to expand streaming service to members in Denmark, Norway, Finland and Sweden.

Netflix's corporate culture focuses on achieving excellence, providing a high-performance environment that allows its employees the freedom to innovate. This 'Freedom and Responsibility' based culture stresses self-discipline and enables the company to stay nimble. Netflix's global workforce is highly mobile and has recently experimented with multiple ways to use mobile devices as physical and logical access devices. One of these pilot deployments, mobile access, was implemented with HID Global. Netflix employees used smartphones enabled with digital keys to open doors by presenting their smartphone to access control readers, just like they do with their existing low-frequency proximity keyfobs and tags.

## The Challenge

Unlike many companies, Netflix



does not require its more than 1,000 employees at corporate headquarters to wear photo ID badges. Instead, the company has traditionally controlled building access using HID low-frequency ProxKey® keyfobs, which offer proximity technology in a convenient, pocket size device. Netflix's employee on-boarding process is paper-free and done entirely online. A new employee's computer is set up and all computer accounts pre-provisioned before their first day of employment. By enabling Netflix to grant new employees building access by sending digital keys over-the-air to the employee's smartphone, the employee on-boarding process would be further streamlined. Netflix also felt that having building access upon arrival at work on day one

would make the new employee feel welcome and immediately productive. Additionally, Netflix is a big advocate of smartphones and other mobile platforms, as well as the bring-your-own-device (BYOD) mobility deployment model for its employees. An access control solution that combined improved security with the convenience of opening doors with a smartphone is very attractive.

Mobility is particularly important to Netflix. More than 800 different device types run the Netflix streaming video application, including TVs, Blu-Ray and DVD players, set-top boxes, gaming consoles, personal computers, tablets and mobile phones. The company also encourages its employees to use

these devices, and believes that mobile access control will be a valuable addition to the smartphones they bring to work each day.

To begin the process of socializing the use of a mobile phone for physical access control, Netflix offered employees the opportunity to use HID MicroProx® Tags for entry. These small, coin-shaped disks can be affixed to the back of an employee's current mobile phone. Employees present the tag on the back of the mobile phone to the reader in order to gain secure entry. By the time of the mobile access pilot, 56 per cent of the respondents were using ProxKeys while the other 44 per cent were using MicroProx Tags. Netflix was ready to take the next step with a pilot solution that would test the concept of a true mobile access experience on smartphones that also delivered improved user convenience and security.

### The Solution

Netflix's mobile access pilot was focused on one of the company's buildings that houses its data science and engineering facilities, finance, IT operations and legal teams. To implement the solution, Howell Electric of Santa Clara, California upgraded five existing MiniProx® card readers on the exterior of the building and two existing ThinLine® II card readers on interior doors, replacing them with multiCLASS SE™ readers.

HID Global's multiCLASS SE readers are part of the company's iCLASS SE® platform, its new standard for highly adaptable, interoperable and secure access control solutions. The iCLASS SE platform enables customers to future-proof their access control infrastructures while simplifying how identities are created, used and managed across a broad continuum

of application requirements, using smart cards, NFC-enabled mobile devices, or both. The iCLASS SE platform also includes iCLASS® Seos™ credentials, which feature a standards-based card edge and are portable for use on NFC-enabled smartphones. The multiCLASS SE readers used in the Netflix pilot were configured to read both HID proximity cards and smartphones carrying iCLASS Seos digital keys. The readers communicated with an AMAG system maintained by Howell Electric.

Netflix launched the pilot by providing its 16 employee participants with Samsung Galaxy S III handsets operating on the Verizon or AT&T network. The phones were equipped with a microSD card and a range extender from Device Fidelity. The microSD cards support Near Field Communications (NFC) in card emulation mode, adding the capability to securely store and emulate user credentials. NFC is a short-range communications technology that enables users to hold their phones close to readers so they can "present" the identity information on the digital keys inside them, and open a door. Handset manufacturers sometimes refer the support of NFC in card emulation mode as 'Secure NFC' as opposed to 'Open NFC'.

The secure element of the microSD card was provisioned with the Seos applet. Then, the HID Mobile Keys app, which provides the user interface and user access to the digital keys, was installed on the smartphone. HID Global's Corporate 1000 Program iCLASS Elite credential format with its custom authentication key was then provisioned over-the air as digital keys to each of the individual smartphones used in the pilot. This digital key structure combined with Seos insures a high level of security.





## Benefits

Pilot participants highlighted improved security among the many benefits of using smartphones to



open doors. "I love the idea of mutually authenticated reader-badges," said Bill Burns, director, Netflix IT Networking & Security. "It reduces the threat of badge skimming and replay attacks." Other participants cited improved security, as well. "Technically, the physical security is better since it requires that a person know the phone can be used as a key, know the passcode to get into the phone, and know how to activate the key," said Netflix desktop analyst David Tsai. Netflix helpdesk support technician Lynn Chikasuye pointed out yet another security advantage: "People will rarely lend their phone out, which prevents unwanted use."

A survey of pilot participants summarized other positive reactions to the deployment, including:

- More than 80 per cent felt that

the application for unlocking a door was "intuitive," and nearly 90 per cent described it as easy to use.

- Approximately 75 per cent said they would be willing to load the app onto their own personal smartphone, and about the same percentage said that other people who saw them using their smartphone to access the building asked questions or expressed an interest in it.
- 87.5 per cent of respondents said they would want to use a smartphone to open all locked doors at Netflix.
- 81.3 per cent of respondents said that the fact that Netflix is testing and deploying mobile access makes it a more fun and exciting place to work. **ESST**

# A Proactive Stance Towards Security:

## Avoiding Cyber Vulnerabilities Of Network Connected Printers

By: Rod Rodericks, Vice President & General Manager, APAC, Zebra Technologies, Inc.



### Security threats in an increasingly fast-paced world

In our fast-paced world, organisations in both public and private sectors seek to achieve better process efficiency in order to maximise business gains. However, the ability to maintain a high level of security throughout all business processes becomes increasingly difficult due to human error, machine faults, or malicious attacks by third parties. More often than not, organisations neglect to provide sufficient thought to their security processes in their pursuit for higher efficiency and convenience.

One key aspect of this issue is the ability for organisations to monitor and control access to all parts of their business – be it restricting access to facilities, key assets and resources, or highly sensitive information. Ensuring security in such situations can help organisations reduce their vulnerability to theft and other fraudulent activities, which would otherwise result in loss of data integrity, reputational damage and even financial losses.

Technology today has progressed to such an extent that devices, which once served simple, one-way processes are now “smart” and connected to networks. One such example would be card printers, particularly the ones that produce secure identification for government entities and

educational institutes, as well as credit cards, debit cards, ATM cards, and pre-paid cards for financial organisations.

The option of instant on-demand card printing provides numerous benefits such as simplifying the purchase and management of costly materials, as well as eliminating human errors such as issuing the wrong card to the wrong person. At the same time, instant on-demand card printing also helps businesses provide better customer experiences and improve customer satisfaction levels through instant issuance of personalized loyalty or membership cards.

Card innovations have proven to offer multiple advantages to businesses, governments and organisations. However, in order to maximise the benefits offered, businesses need to understand and effectively manage these technologies, particularly when it comes to card printing and production.

### Evolution of the card printing technology





Since their inception, card printers have evolved into network connected devices that feature a series of built-in security tools to prevent fraudulent use of such printers to create fake government identity cards, credit cards, and debit cards, among others. These devices now come with additional capabilities to collect and provide valuable insights into the user data, allowing organisations to improve on their levels of service and operations.

As card printers become part of a more complex and growing network, which companies leverage on to create value, there are still some considerable risks that decision makers should be aware of. For example, despite the built-in security features that many card printers come with today, cases of fraudulent use still remain high. Last

year, Symantec's Norton Cybercrime Report 2012 found credit card fraud and identity theft incidents in Singapore were at ten per cent and eight per cent, which is higher than the global average of seven per cent and six per cent respectively. This shows that the network to which the card printers are connected to remains vulnerable to cyber-attacks.

### **Mitigating unnecessary risks**

As technology continues to evolve, there will always be new security issues cropping up, against which businesses must always remain on their guard. To ensure that organisations have the best possible security measures in place when utilizing the convenience of network connected printers, they need to consider first the features of the machines they are printing on, and second the process in which they carry out such activities.

Using high-quality cards play a critical role in improving the overall security of an organization. With quality materials and a good printer, organisations can ensure that the cards they print are tamper-proof, durable, have high-resolution graphics for easy verification on identification cards, and other covert features like Opacity Mark and Micro Text Printing.



To decide on the kind of card printers your organization needs, consider these factors:

### 1. How is the card going to be used?

This will determine the materials you should use to print your cards on, the printing elements you need to incorporate into your card, the type of encoding required on the card, and also the need for high-resolution image printing.

For example, American Barcode & RFID (AB&R), a Zebra Card Printer Solutions partner, helped a major nuclear power facility comply with the stringent regulations from the Nuclear Regulatory Commission (NRC) with technology that can control access to restricted areas and track the movement of employees to ensure that no one can enter unsafe zones. Now, employees of the plant only need to produce their tamper-proof personalized Zebra card-printed passes for instant verification to gain access to areas they are authorized to enter.

### 2. How many cards do you plan to print, and how frequently?

Card printers come in varying printing speeds, depending on whether you need to print on one or both sides. For example, in the instance of instant card issuance, it might be prudent for organizations to get card printers that can print at high speeds. In general, faster printing speeds will mean more expensive equipment. In the case of The City College of San Francisco, a large

urban community college, the process of preparing for the new semester meant the need to print 100,000 new student identification cards at a go. This caused much frustration with both students and staff, due to the long waiting time needed to procure ID cards for all the students. By using Zebra's printers that allowed for dual-sided printing, producing ID cards now take only one-sixth the time it took before.

### 3. Where will you locate your printer?

If you have limited workspace available, you will want a printer with a smaller footprint. Also, if your printer is going to be placed in a work environment, quieter printers would probably work better.

For example, it was a challenge for the International Dragon Boat Federation to track competitors to ensure that the right people were at the right races. Zebra's printers were chosen for their portability, speed, cost effectiveness and ease of use, making the organizer's jobs a lot simpler.

## Achieving a secure network card printing environment

A quality network connected card printing system is only as strong as the secure network it runs on. Here are some precautions that companies can take to ensure that they are enjoying the full benefits of a network-connected card printing system while avoiding potential cyber vulnerabilities and pitfalls:

- **Implement a strong remote device management system**

Through a remote device management system, businesses can easily and efficiently monitor not only the state of the card printers throughout their facility, but also printer usage in real time. Levels of consumables, such as secure hologram laminates and blank cards, can be tracked to ensure appropriate use. A remote device management system can also be programmed to automatically notify key personnel if risk-specific activity is taking place so you can stop security breaches before they escalate.

- **Choose printers with physical locks**

Networked printers are not always in line-of-sight the way direct connected printers usually are. Physical locks can help prevent casual tampering or theft of supplies. Limit access only to authorized key operators.

- **Encrypt sensitive identity data**

All data that is needed to produce a secure ID should be encrypted at the host and all the way to the printer. The best practice is to use AES (Advanced Encryption Standard) encryption. Choose printers that can process encrypted data directly.

- **Do not provide direct access to identity data**

User access to secure data should be provided through

applications only. This allows the security administrator to limit access to identity data by user authorization level.

- **Connections to data should be opened only when necessary**

Secure connections to identity databases should be opened only when actively accessing the data. Holding connections open longer than necessary creates an unnecessary security risk.

- **Require web-based certificate authority for all operations that access data**

- **Always have the firewall on and configured to block unauthorized connections**

- **Run virus and spyware screens on all incoming and outgoing data**

In addition, keep virus and spyware libraries up to date, which is the easiest step to take to protect your data, yet something that is frequently overlooked.

Security should be proactive and not reactive. Keeping these network protection tips in mind can ensure organisations will reap the benefits of a smart, connected printing system. However, as is with all technologies, they must also remain vigilant and aware of new, emerging threats, as well as the solutions to counter these threats. **ESST**



# Fully Integrated Security, Communication And Safety System By Bosch At Gardens By The Bay, Singapore

## Background

The Gardens by the Bay (GB) is an urban outdoor recreation development located at the South of Marina Bay in Singapore. Spanning 54 hectares, GB comprises of iconic Supertrees, Cooled Conservatories and a series of outdoor themed gardens.

Since it's opening, GB has received many local and international accolades.

## The Challenge

In order to create the perfect environment for its visitors, GB required a fully integrated system that





encompasses security surveillance, public address, smoke control and a building integration system.

Installation came as a challenge in some areas due to the unique building structures in the Garden and the aesthetic considerations set by GB. Cameras and speakers had to be well-integrated and concealed into its surroundings.

### **The Solution**

Working with the criteria set out by GB, NCS and Bosch came up with a fully integrated system to address the concerns. This included the installation of 192 cameras (NDC455, VG4 and VG5 series), 1,312 speakers under the Praesideo series, a building integration system, three FPA5000 Panels and 100 optical and heat detectors throughout the entire GB. **SST**





# Convention Centre In Orlando Heightens Security With Megapixel Video

## The Customer

The Orange County Convention Centre (OCCC), located in the heart of the Orlando, Florida tourism district, is the nation's second largest convention facility and a world-class destination. The complex is comprised of two separate buildings connected by a 1,500 foot, open-air bridge with moving sidewalks across International Drive. It offers 2.1 million square feet of exhibition space plus 480,000 square feet of function space, including meeting rooms. OCCC is owned and operated by the Orange County Government.

## The Challenge

OCCC sought to increase the effectiveness of their surveillance operations by replacing its analog cameras and video encoders with superior performance IP cameras. The process began with a survey of existing analog cameras and their physical placement to best define locations for the new camera system. During an extensive camera evaluation process, Manny Rustia, MIS analyst for the OCCC, and his colleagues narrowed the choice down to cameras with resolution above three-Megapixels with H.264 compression and day/night capabilities as a way of "future-proofing" the system.

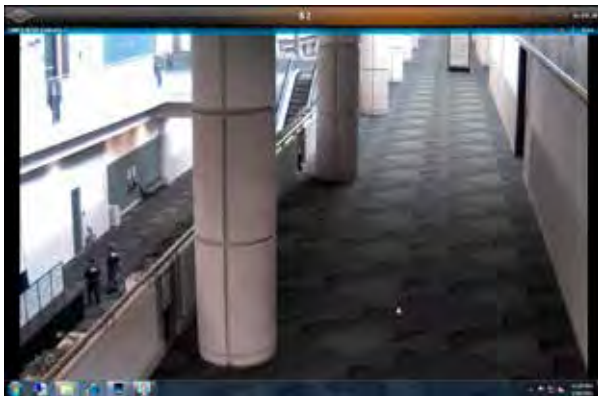
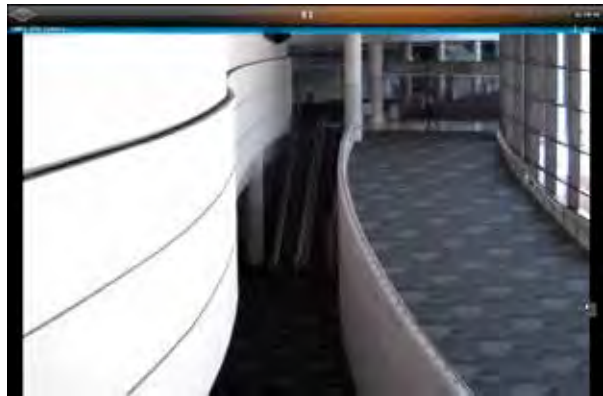
## The Solution

John McKenzie, Business Development manager for

integrator EMC Physical Security Solutions, introduced Arecont Vision megapixel video cameras to Orange County. EMC Physical Security provides enterprise network security, video surveillance and information management and storage to increase customers' ability to detect, deter and analyse security events in real-time. OCCC evaluated cameras from various suppliers before deciding on Arecont Vision five-megapixel IP cameras. "Arecont Vision was the hands-down standout based on megapixel quality and price," said Rustia.

OCCC's networking and management information systems (MIS) staff designed the IP video surveillance system built around Arecont Vision five-Megapixel cameras. Approximately 350 cameras are strategically positioned throughout the interior and around the perimeter of the OCCC's West Building. The system includes one administrative server and 10 camera servers to date with about 30 to 40 cameras per server. Each server and camera is allocated archive disk space with "live storage" kept on each relative server. This allows OCCC management to view live video with full electronic PTZ imaging capabilities while simultaneously recording full screen images – a capability simply not achievable with conventional IP or analog cameras. The system uses an OnSSI digital video recorder (DVR) chosen by the Orlando Police Department (OPD) in conjunction with the Orange County government.

The OCCC uses Arecont Vision's AV5105DN, a five-Megapixel day/night camera to provide 2,592 x



1,944-pixel images at nine frames-per-second. Light sensitivity is 0.3 lux at F1.4. The camera uses H.264 (MPEG four, Part 10) compression to minimize system bandwidth and storage needs. The AV5105DN can also be used at lower resolutions for various frame rates up to full motion. The camera provides full-motion progressive-scan 1280x1024 video at 30 frames-per-second (fps), 1600x1200-pixel video at 24 fps or 2048x1536 at 15 fps. The camera incorporates Arecont Vision's MegaVideo image processing at 80 billion operations per second. Features include forensic zooming to zero-in and view the details of a recorded image, motion detection and image cropping. The camera's day/night version used at the Orange County Convention Centre includes a motorized infrared (IR) cut filter. The camera can output multiple image formats, allowing the simultaneous viewing of the full-resolution field-of-view and regions of interest for high-definition forensic zooming.

The all-in-one integrated dome version of the camera is also among the cameras used at the Orange County Convention Centre. Arecont Vision's AV5155DN is an integrated five-Megapixel camera, lens and IP66-rated dome housing (to withstand environmental conditions such as dust and water). The MegaDome® model includes a camera gimbal with 360-degree pan and 90-degree tilt adjustments. Other specifications are similar to the AV5105DN box camera.

## The Benefits

Rustia said the Arecont Vision megapixel IP cameras are working extremely well and provide broader coverage with fewer cameras as a result of their higher resolution. Additionally, the new system produces superior images in both day and evening lighting conditions while minimizing video streaming and storage bandwidth allocations as a result of the units' H.264 compression.

Cameras inside and outside the facility provide video images with extreme clarity 24 hours a day, seven days a week. Rustia said a benefit of the Arecont Vision cameras is "great, stunning, megapixel quality." In addition to greater image clarity, the megapixel cameras' ability to cover more square footage using fewer cameras versus conventional IP cameras helps to lower the total cost of ownership of the system. The megapixel IP cameras allow operators to zoom in on specific areas of live or archived video to see important details such as a license plate number.

Arecont Vision has been responsive to the end-user's needs. "In a nutshell, without Patrick Kelly (of Southeast Security Products, Arecont Vision's manufacturer's rep firm) and John Bujarski (Arecont Vision's Southeast U.S. sales manager), I would be driving without headlights," said Rustia. "We are highly appreciative of their on-going support and expertise." **SST**



# Village In Chicago Finds Cost-Effective Solutions To Upgrade Its Access Control System

## Background

The Village of Hoffman Estates is spread out over 26 square miles northeast of Chicago, Illinois. After its founding in 1959, the Village has steadily grown to a population of more than 51,000 residents, served by a full complement of municipal staff and services.

## The Challenge

The Department of Public Works faced multiple challenges to cost-effectively upgrade its access control system over such a large area while avoiding the cost and time required to install and maintain a number of new phone lines. The Village was looking for a cost-effective, cloud-based system that could be accessed from anywhere. Budget considerations also dictated that any system upgrade must be implemented over a number of years, while being capable of integrating with existing and future systems including video surveillance. In the post-9/11 world, the Village also began planning in earnest to protect its water tower, wells, and chlorine substations; other key infrastructure; and the staff who serve Village residents.

## The Solution

In selecting Brivo OnAir, the Village has used a phased implementation over five years in which they have been able to upgrade software along the way; used different installation vendors as dictated by their bid process; and integrated with other technologies to bring multiple buildings, vehicles, and doors onto a system managed by one control interface. The Village utilizes Brivo's advanced cloud-enabled and wireless access control system to enhance security for key buildings and critical infrastructure throughout the town.

In the early phases, Brivo ACS4000 Web-enabled panels and readers were installed at the Village police station and Brivo wireless panels were installed to control access to the Village's water towers and the chlorine facility. The Village has been



able to mix and match transmission technologies to best fit their needs and budget. Other major system advantages are the flexibility and integration potential of the Brivo platform.

Phase III, which was recently completed, included expanding access coverage with the Brivo OnAir to the Village Hall, the Public Works Centre, the Vehicle Maintenance Building, and four fire stations. These installations are all Ethernet-based and Web controlled. This phase also included installation of multiple DVRs in separate locations and more than 20 surveillance cameras integrated onto the Brivo platform.

### The Results

Paul Petrenko, the Village's facilities manager, assessed the Brivo system: "Our initial plans with the remote sites were we didn't want to install phone lines everywhere. Brivo offered cellular transmission along with Ethernet. And with a cloud-based system, we didn't have to maintain servers



and get our IT department involved. Brivo provides data storage and management and front-end installation costs were kept low, so we were able to do this on budget. The Brivo system is fantastic. It's logical and easy to use—I didn't even need to read the manuals."

Village administrators have programmed the system to fulfil a number of critical functions. Every day staff members receive an "exception report," which flags activity for investigation: propped or forced doors, unauthorized access attempts, and repeated attempts for access by someone who may actually need such access. The system has also been programmed to send alerts to handheld devices in the event of system or communications failure, problems at the water supply facilities, and other contingencies.

One of the major advantages of the Brivo OnAir system is virtually unlimited access and control without buying and loading any software. Petrenko often accesses the system from his home office and even when on vacation by handheld device. On one occasion, he unlocked a water treatment plant access gate for a vendor from hundreds of miles away.

Tom Murdock of Initial Electronics, who has overseen later-phase installation and integration, noted from an integrator standpoint how proactive Brivo is in upgrading their application and hardware, "Brivo is always addressing issues that fit an integrator's needs, they listen." Everything on the system is hosted by Brivo, so the Village does not have to worry about data back-up. For the Village of Hoffman Estates, Brivo brought down initial installation costs and saved the end-user a substantial amount of money—while delivering superior system performance, service, and support. **SST**

# Intelligent Surveillance For Popular Casino In Korea

## Background

As one of the most popular casinos in Korea, Kangwon Land Casino offers a total of 132 game tables and 960 slot machines. In addition, Kangwon Land also operates hotel, theme park, golf course, resort, and skiing ground, attracting millions of visitors from both Korea and overseas.

## Time for a change

After using analog surveillance systems for more than 10 years, Kangwon Land decided to replace the legacy system with full HD IP surveillance solution.

## The Solution

Partnering with Samsung SDS, Bosch has been chosen to provide its IP video surveillance systems to Kangwon Land. More than 2,000 cameras are installed, which makes it the largest HD IP surveillance installation for Bosch in Korea. AutoDome Junior HD Fixed and PTZ series, FlexiDome HD, VIP-X1600XF and DLA1400 series are deployed, and Intelligent Video Analysis (IVA) technology is also used to support the operator's daily work.

The Bosch IP system has been seamlessly integrated with Genetec platform, providing a top class VMS empowered by the leading intelligent imaging of Bosch's front-end



devices. The iSCSI edge recording from Bosch IP cameras and encoders to the DLA, allows additional resilience against potential network outage. Integrated with Genetec, Bosch IVA also enhances the operational user experience with desirable results.

"With HD cameras, we can capture high quality video instantly whenever the dealer or floor-master requires. Once you experienced the new video quality – you can't stop using them!" The customer said, "Bosch IVA also makes it easier for operator to monitor activities, even under challenging lighting conditions. Bosch edge recording and playback response time fully meets the requirement of analysts in their daily work." **SST**

