

• S O U T H E A S T • A S I A •  
**CONSTRUCTION**

MAY - JUNE 2014



Mexico builds Urban Highway South  
Construction of Chenab Bridge in India  
Sydney Opera House under renovation  
New village school in Tajikistan



**Review**

**KOBELCO**

# MORE WORK.

The longer you use the Acera Geospec, the more money you save.

**ACERA**  
**GEOSPEC**

*Super X*

ACERA Geospec Super X and Line-up

Work Volume



Increase

Fuel Consumption



Decrease



**SK200**  
**SK210<sub>LC</sub>**

**KOBELCO CONSTRUCTION MACHINERY CO., LTD.**

17-1, Higashigotanda 2-chome, Shinagawa-ku, Tokyo 141-8626 JAPAN

Tel: +81 (0) 3-5789-2127 Fax: +81 (0) 3-5789-2136

[www.kobelco-kenki.co.jp](http://www.kobelco-kenki.co.jp)

# LESS FUEL.



**SK130  
SK140<sub>LC</sub>**



**SK250  
SK260<sub>LC</sub>**



**SK460  
SK480<sub>LC</sub>**



**SK330  
SK350<sub>LC</sub>**



**SK850<sub>LC</sub>**

Photos may contain optional equipment.

**KOBELCO INTERNATIONAL (S) CO., PTE. LTD.**

60 Pandan Rd., Jurong, Shigapore 609294

Tel: +65-6268-8200 Fax: +65-6261-3719

[www.kobelconet.com/shsg/](http://www.kobelconet.com/shsg/)



## Are you looking for the perfect match? We've got it.

The CH540 crusher is the second step in the launch of a new generation of Sandvik cone crushers - following the CH550. The CH500 series is the perfect match for anyone who is looking for the unique combination of a small footprint with a groundbreaking capacity. The CH500 series enables an increased production rate with a perfect result at a lower cost and less environmental impact. Another example of craftsmanship in perfection from Sandvik.



Learn more about our all-new cone crusher CH540 at:  
[sandvik.com/CH500](http://sandvik.com/CH500)





**Kim Ju-Han,  
Senior Construction Manager**

Hyundai Engineering & Construction Co., Ltd.:  
"Even for such a big scale project, the use of the ACS and RCS climbing systems has made a 4-day per floor cycle possible. When combined with the other PERI formwork systems and their impeccable technical support, we were able to be ahead of our schedule by three to four months."



Asia Square Tower, located along Marina View at Marina Bay in Singapore, is a twin-tower mixed-use development. Tower 1 was completed in late 2011, Tower 2 is currently under construction.



Tower 2 will feature 46 floors with a hotel occupying the 32nd to 46th floors.



With the PERI RCS Rail Climbing Safety Screen, the slab edges on the upper floors are completely enclosed.

# Ahead of schedule – thanks to PERI products and competent technical support



**PERI ASIA Pte. Ltd.**  
**Formwork Scaffolding Engineering**  
No.1 Sims Lane # 06-10  
Singapore 387355  
Phone +65 67 44 29 89  
Fax +65 67 44 36 93  
pha@periasia.com  
www.periasia.com

# TOGETHER WE FORGE AHEAD



*KOWAN NEO 400α  
TILT PILER*



*FAV 30-400  
Hydraulic Vibro Hammer*



*COMACCHIO MC-15  
Hydraulic Drill Rig with Jet Grouting Kit*



*FAR 250MR  
Hydraulic Bore Pile Rig*



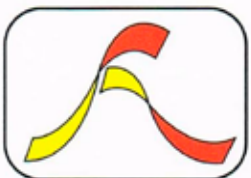
*SNS-150  
Grout Injection Pump*



*FAD-250  
Desander*



*Tecnivell TW 700  
High Pressure Triplex Pump*



**FOUNDATION ASSOCIATES ENGINEERING PTE LTD**

5, Tuas Avenue 1, Singapore 639490 Tel: (65) 6863 1633 Fax: (65) 6863 1455

Email: [fnapl@singnet.com.sg](mailto:fnapl@singnet.com.sg) Website: [www.fnapl.com](http://www.fnapl.com)



**SUNWARD**



# TELESCOPIC CRAWLER CRANE



**SWE50E-2  
EXCAVATOR**



**TELESCOPIC  
HANDLER**



**SKID STEER  
LOADER**



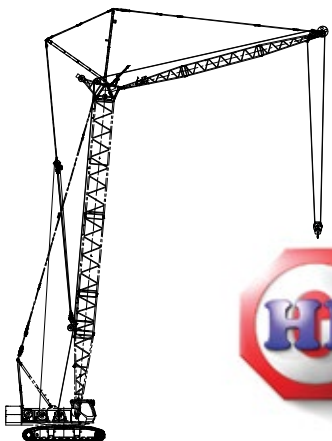
**FORKLIFT  
SWFE35**



**SWE210  
EXCAVATOR**

## **GREAT IDEAL LEADS GREAT FUTURE!**

HL Group is the sole distributor for SUNWARD in Singapore



**HL GROUP**  
WORKING TOGETHER

HL Group (S) Pte Ltd

Sales office: 194 Pandan Loop #04-08 Singapore 128383

Tel: (65) 6776 6006 | Fax: (65) 6262 2916 | H/P: (65) 9792 6006

Workshop: 16-18A Jalan Tukang Singapore 619256

Tel: (65) 6779 6006 | Fax: (65) 6779 6116

Email: [Enquiry@hlgroup.com.sg](mailto:Enquiry@hlgroup.com.sg)

Website: [www.hlgroup.com.sg](http://www.hlgroup.com.sg)



# LINDEN COMANSA

TOWER AND LUFFING-JIB CRANES



Construcciones Metálicas COMANSA S.A.

Tel. +34 948 335 020 | Fax. +34 948 330 810  
export@comansa.com | www.comansa.com  
Pol. Urbizkain, Crta. Aoiz Nº 1  
31620 - Huarte (Navarra), SPAIN



Linden Comansa AMERICA LLC

Tel. +1 704 588 7729 | Fax. +1 704 588 3986  
sales@lcacranes.com  
www.lcacranes.com  
11608 Downs Rd. Pineville NC 28134, USA



Hangzhou Comansa JIE Construction Machinery Co. Ltd

Tel. +86 571 8299 5555 | Fax. +86 571 8299 6555  
export@comansajie.com.cn  
www.comansajie.com.cn  
Jingjiang, Xiaoshan, Hangzhou P.C. 311223, CHINA



**XCMG FOR YOUR SUCCESS**

**WWW.XCMG.COM**

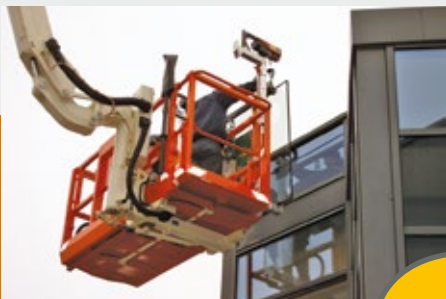
EMAIL: [export@xcmg.com](mailto:export@xcmg.com)

# Visiting APEX is doing business at the highest level

**APEX**  
2014  
AMSTERDAM

**24 - 25 - 26 JUNE**

**Amsterdam RAI  
Convention Centre**



*The world's top access equipment event*

- Meet the greatest experts face-to-face
- Update yourself about the latest trends
- Compare and select the latest access equipment

Register online for a **FREE** entry:  
[www.apexshow.com](http://www.apexshow.com)

Sponsored by:

**access**  
INTERNATIONAL

Supported by:

**IPAF** **khl**  
GROUP

### **Opening Hours**

**Tuesday June 24 09.30 - 18.00 h.**

**Wednesday June 25 09.30 - 18.00 h.**

**Thursday June 26 09.30 - 17.00 h.**

**Need more APEX information?  
Contact: [marleen@ipi-bv.nl](mailto:marleen@ipi-bv.nl)**





# Simply Reliable

## Electric Scissor Lifts



Skyjack's DC Electric Scissor range offers an easy to service low maintenance design in a compact and versatile package. Electrically powered and quiet with zero emissions, all models are capable of maneuvering in the smallest spaces. These are the world's top selling aerial work platforms.

**\*Key highlights include:**

- Low gross weight produces low floor loading allowing use in more areas
- Clevis design on scissor provides increased rigidity and lower stress and fatigue on joints
- Wide scissor stance increases stability and provides a more secure feeling with the operator
- Unmatched maneuverability and compact footprint
- Working heights between 21' (6.4 m) and 38' (11.6 m)

\*Some features model dependent

**SKYJACK**  
simply reliable

Vertical Mast Lifts • **Electric Scissor Lifts** • Rough Terrain Scissors • Articulating Booms • Telescopic Booms • Telehandlers

For information call 1-800-265-2738 or visit us online at [www.skyjack.com](http://www.skyjack.com)

# Contents

• S O U T H E A S T • A S I A •  
**CONSTRUCTION**

may/ jun 2014



**On the cover:**  
The Urban Highway South project in Mexico  
(page 86)

**Cover designed by Fawzeeah Yamin**

**Publisher**  
Steven Ooi  
steven.ooi@tradelinkmedia.com.sg

**Editor**  
Fabia Sugandy  
seac@tradelinkmedia.com.sg

**Group Marketing Manager**  
Eric Ooi  
eric.ooi@tradelinkmedia.com.sg

**Marketing Manager**  
Felix Ooi  
felix.ooi@tradelinkmedia.com.sg

**Assistant Marketing Manager**  
Jasmine Gan  
jasmine.gan@tradelinkmedia.com.sg

**Head of Graphics Department/  
Advertisement Coordinator**  
Fawzeeah Yamin  
fawzeeah@tradelinkmedia.com.sg

**Graphic Designer**  
Siti Nur Aishah  
siti@tradelinkmedia.com.sg

**Circulation**  
Yvonne Ooi  
yvonne.ooi@tradelinkmedia.com.sg

Any other matters : info@tradelinkmedia.com.sg

## NEWS

News in Southeast Asia	12
News in Southeast Asia, Australia & NZ	16
News in East Asia	18
News in South Asia & the Middle East	22
News in Europe	24
News in North America	26
IPAF Highlights	36

## EVENTS

Calendar of Events	30
Industry Events	32

## PRODUCTS

New In Industry	38
Road Construction Equipment	44
Light Tower	46
Earthmovers	48
Foundation Equipment	51
Mixed Category	53



# My Ammann – I can build on it.



Foreman Feros Hossain Pansu with his JustBlack.

Standardisation is worth it! With the JustBlack, we have succeeded in designing an efficient but inexpensive asphalt mixing plant having 80–240 tonnes per hour output capacity. A high degree of standardisation and clearly-defined options make this unbeatable value for money possible.

For more information on compaction machines, mixing plants and pavers go to [www.ammann-group.com](http://www.ammann-group.com)

## AMMANN

# Contents

## PROJECTS & SPECIAL FEATURES

<b>Applications On Site</b>	<b>54</b>
<b>Product Feature</b>	<b>68</b>
<b>Industrial Building</b>	<b>72</b>
<b>Educational Building</b>	<b>76</b>
<b>Bridge Project</b>	<b>80</b>
<b>Road Project</b>	<b>86</b>
<b>Railway Project</b>	<b>96</b>
<b>Focus on Australia &amp; New Zealand</b>	<b>102</b>
<b>Review of World of Concrete 2014</b>	<b>116</b>



58



80



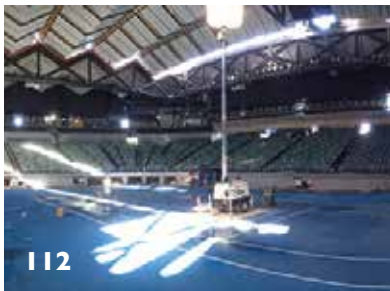
104



76



92



112



116



68

### SOUTHEAST ASIA CONSTRUCTION is published six times a year by:

Trade Link Media Pte Ltd. RCB Registration no: 199204277K  
 Address: 101 Lorong 23, #06-04 Prosper House, Singapore 388399  
 Tel: +65 6842 2580, Fax: +65 6842 2581 / +65 6745 9517  
 Website: www.tradelinkmedia.com.sg  
 Email: info@tradelinkmedia.com.sg  
 The company is a member of Association of Equipment Manufacturers (AEM)

The magazine is available free-of-charge to applicants in the building and construction industries who meet the publication's terms of control. For those applicants who do not qualify for free subscription, copies will be made available, subject to the acceptance by the publisher, of a subscription fee which varies according to the country of residence of the potential subscriber. Airmail (per year): Europe/USA - S\$150; Japan, Australia and New Zealand - S\$150; Malaysia and Brunei - S\$80; Singapore - S\$40; Rest of Asia - S\$120 (Incl. 7% GST Reg.: M2-0108708-2).

Printed in Singapore by Kim Hup Lee Printing Co Pte Ltd.  
 MCI (P) 089/06/2013 • ISSN 2345-7082 (Print) and ISSN 2345-7090 (E-periodical) • KDN No: 1560 (1271)-(6)

Clause: The Editor reserves the right to omit, amend or alter any press release submitted for publication. The publisher and the editor are unable to accept any liability for errors or omissions that may occur, although every effort has been taken to ensure that all information is correct at the time of going to press. No portion of this publication may be reproduced in whole or part without the written permission of the publisher.

Disclaimer: All advertisers and contributors must ensure all promotional material and editorial information submitted for all our publications, must be free from any infringement on patent rights and copyright laws in every jurisdiction. Failure of which, they must be fully liable and accountable for all legal consequences (if any) that may arise.

### INTERNATIONAL SALES OFFICE:

T. Asoshina/Shizuka Kondo, ECHO Japan Corporation  
 Grande Maison Rm 303, 2-2, Kudan-Kita 1-Chome, Chiyoda-ku, Tokyo 102, Japan  
 Tel: +813 3263 5065, Fax: +813 3234 2064  
 Email: aso@echo-japan.co.jp



# Most reliable pile driving equipment

[www.pvepiling.com](http://www.pvepiling.com)



## PVE Piling and Drilling Rigs

are quick to assemble and easy to operate



Aly Energy Singapore Pte Ltd  
Aly Lifting & Foundation Pte Ltd  
Aly Heavy Equipment Sdn Bhd

Exclusive Dealership



Crane &  
Green Line



Piling  
System



HIRSCHMANN

Load Control &  
Data Logger System



Drilling

T: (65) 6266 8558 • F: (65) 6266 5885 • [enquiry@aly.com.sg](mailto:enquiry@aly.com.sg) • [www.aly.com.sg](http://www.aly.com.sg)

## New measures to boost Singapore's construction productivity

As the key driver of building projects at the top of the construction value chain, developers have a greater role to play in driving construction productivity by setting the direction in adopting productive technologies. Therefore, new measures such as requiring the use of productive technologies for selected government land sales (GLS) sites are aimed at getting more developers to adopt new technologies and lead the demand for such technologies.

From the second half of this year, the government will mandate the use of prefabricated bathroom units (PBUs) for all residential GLS sites, to drive greater adoption of the technology. According to the Building and Construction Authority (BCA), more than 14,000 of such bathrooms, which are fully fitted out in factories before being assembled on site, have been adopted in more than 20 private residential projects since 2005. The adoption of new productive technologies such as prefabricated prefinished volumetric construction (PPVC) and cross laminated timber (CLT) will also be required for some suitable GLS sites. In addition, a minimum percentage of prefabrication level will be set for industrial government landsale projects starting from the second half of this year.

To encourage private developers to adopt new productive technologies, incentives will be given to those on non-GLS projects and those who are going beyond the requirements for GLS projects.

To further boost productivity and promote easier-to-build building designs and labour-efficient construction methods, certain types of new projects will also be required to adopt a range of pre-determined standardised floor heights and building components such as precast staircases, precast refuse chutes and doors from September this year.

All residential non-landed developments will have to use drywall for internal partitions except for wet areas such as bathroom and kitchen areas. Requirements on buildable designs and use of labour-efficient construction methods will also be raised progressively to achieve greater productivity improvements.

“Buildings can be completed faster with the use of these productive technologies. When pushing for the adoption of productive technologies such as drywalls, PBUs, PPVC and CLT, we look beyond just labour efficiency. We also consider if they can help to reduce dis-amenities to residents living near the construction site. As these technologies involve a large extent of off-site production before they are assembled on site, we can expect less noise and dust during construction,” said Dr John Keung, CEO of BCA.

To ensure that developers take greater ownership in implementing buildable design and use of labour-efficient construction methods, appropriate enforcement action may be taken against developers whose projects deviate from the approved plan.

The government will also be taking the lead in driving productivity. Key government procurement entities (GPEs) will be formulating their own productivity roadmaps and adopting the national productivity target of 2 to 3 percent productivity improvement per year.

The tender evaluation for consultancy and construction of government projects will also further recognise progressive firms with good track records in adopting productive construction designs and methods. A higher productivity weightage will be accorded under the tender evaluation framework. ■

## Atkins to play role in Malaysia's Economic Transformation Plan

Atkins has signed a contract with MARA to deliver the concept design for buildings and the masterplan for core and potential extension areas of the Asia Aerospace City Subang, Malaysia. Upon completion, the development will provide office accommodations to international engineering firms and training facilities and opportunities to local engineers and engineering students.

“I am excited about this strategic project. In line with Malaysia's Economic Transformation Plan which calls for the nation to become a self-sufficient industrialised nation by the year 2020, education plays a vital role to achieve the vision,” said Chris Birdsong, Atkins' CEO for Asia Pacific. ■

The Malaysian Prime Minister (centre) attending the exchange of contract between Atkins and MARA.



## Vinci, Vopak and Jurong Consultants to operate Jurong Rock Caverns in Singapore

Singapore's industrial estate developer JTC Corporation has awarded to Banyan Caverns Storage Services Pte Ltd (B CSS) – formed by Vopak Terminals Singapore, Geostock, a subsidiary of Vinci subsidiary Entrepouse Contracting, and Jurong Consultants – the contract to operate and maintain phase one of the Jurong Rock Caverns (JRC) project on Singapore's Jurong Island for a period of 15 years.

The contract covers operation of the first phase of the JRC project. The pioneering underground petroleum product storage

facility consists of five deep excavated undersea rock caverns for which Geostock provided basic engineering design and construction management services.

The operator will be responsible for management and maintenance of the underground and surface facilities, notably the access shafts, underground tunnels, mechanical, electrical and instrumentation equipment including fire protection and ventilation systems, and ancillary facilities such as jetties. ■

# TOUGH WORK MADE EASY

Mining sites and mega construction projects are some of the toughest work locations for Man and machine. At TRXBUILD, we relish the challenge of getting the job done on time, every time. Engineering productivity is the essence that powers every TRXBUILD machine around the world that we operate in.

Tough work made easy – that's the TRXBUILD promise!



## Second Penang Bridge opens to public

AECOM recently celebrated the official opening of the second Penang Bridge in Malaysia – the longest bridge in Southeast Asia. The company has played a key role in partnering with the contractor to deliver an innovative structure designed to withstand the severe seismic stress of a once-every-2,500-year earthquake.

The 24 km second Penang Bridge links the Penang Island and the Malaysia Peninsula. It is said to be the largest civil engineering project in the past 20 years in the region. It consists of precast segmental concrete marine viaducts in 55 m span modules and a cast in-situ concrete cable-stayed bridge measuring 475 m.

Working with the China Highway Planning and Design Institute (HPDI), AECOM was the consultant of China Harbour Engineering Company (CHEC) to provide feasibility studies, detailed design as well as pre-tendering and post-tendering services and site supervision since 2008. AECOM's team in Malaysia, together with engineers from the long-span and specialty bridges group, worked in the design, construction supervision, and construction engineering of this record-breaking project. AECOM also provided specialist consultancy on aerodynamics, navigation risk assessment and ship impact studies, seismic analyses, wind and structural health monitoring, fire hazard assessment, and resolution of construction



Panorama view of the second Penang Bridge, the longest bridge in Southeast Asia.

challenges in the substantial marine piling operation. A special aspect of the project involved applying intelligent construction engineering techniques to enable successful erection of the 240 m main span cable-stayed bridge over the main navigation channel.

“The second Penang Bridge is subject to the merciless forces of nature, such as earthquakes, potential tsunamis and wind, to name a few; and is exposed to a hostile marine environment. These challenges were overcome through meticulous planning and design, and the result is one of the world's largest sea-crossing projects in recent years,” said Dr Robin Sham, AECOM's global long-span and specialty bridges director. “We have helped accomplish an immense human endeavour; creating many innovations along the way.”

In addition to its large size, this RM 4.5 billion project pioneered new construction methods to minimise the risk caused by seismic activity near the Sunda tectonic

plate, including the use of 2 m diameter bored piles founded to a depth in excess of more than 120 m for the cable-stayed bridge, and the use of high-damping rubber bearings for seismic isolation of the marine viaducts.

The whole sea-crossing project introduced numerous innovations, including intelligent bridge geometry control, a lightweight form traveller machine for cable-stayed bridge erection, the extensive use of the statnamic pile-loading testing method and the use of high-damping rubber bearings for seismic isolation. The project also saw the most extensive use of precast hollow concrete spun piles in bridgework, and substantial driven tubular steel piles in a marine environment.

“This strategic new link can alleviate the overloaded traffic of the existing bridge and improve the overall connectivity between the city and the Penang International Airport, spurring the area's economic growth,” said Lo Haw Ru, AECOM's project director and design reviewer for the project. ■

## Work on Comtech building starts

Work has begun on the S\$350 million redevelopment of the Comtech commercial building in Singapore. Mott MacDonald is acting as building services consultant on behalf of Mapletree Business City Pte Ltd on the project.

The redevelopment of the Comtech building will include the construction of a new 30-storey tower with three stepped podium blocks, providing approximately 125,000 sq m of gross floor area. As the second and final phase of the Mapletree Business City (MBC) integrated business hub it will build on the previous success of MBC, which includes a business park and retail space, office and meeting facilities, restaurants and cafes and a gymnasium with heated pool.

The MBC development has revitalised the Alexandra Precinct of Singapore. Located at the fringe of the central business district, it is designed to support, enhance and exceed the needs of modern businesses. Construction of the project is due to be completed in the first half of 2016.

According to Mott Macdonald, when the redevelopment of the Comtech building is complete, the complex will be a Grade A business park space with high floor plate efficiency. The project recently obtained Green Mark Platinum certification, Singapore's highest sustainability award. This was achieved thanks to a predicted 30 percent energy saving through the use of efficient chiller plants and lighting, said Mott Macdonald. ■

## Keppel Land to build new condominium in Jakarta

In line with Keppel Land's commitment to strengthen its foothold in Indonesia, with a focus on Jakarta, the company has entered into an agreement to acquire a 3 ha site for approximately Rp. 400.8 billion in west Jakarta where it will develop a high-rise condominium with ancillary shophouses for sale. The first phase of the development is expected to be launched in the first quarter of 2015.

Located along the Jakarta Outer Ring Road, residents will be able to enjoy excellent connectivity to key business districts and various entertainment hotspots. The new site is also around 15-minute drive from the Soekarno-Hatta International Airport, and about 12 km away from International Financial Centre Jakarta, Keppel Land's Grade A commercial development in the city centre along Jalan Jenderal Sudirman.

Keppel Land is currently constructing International Financial Centre Jakarta Tower 2, which is located just beside the Tower 1 and near the upcoming Setiabudi MRT station. Work on the new 48-storey Grade A office tower is progressing well, with piling works completed. When completed in the second half of 2015, Tower 2 will offer about 50,000 sq m of net leasable area. ■



So major projects don't bite the dust:  
**Off-Highway engines by MTU.**  
**Tougher – whatever the conditions.**

All around the world, off-highway operations face extreme conditions every day. It's a good thing they can depend on MTU drive systems in any situation. The MTU Series 1000-1600 engine lineup offers unmatched performance, all while meeting EU Stage IV/EPA Tier 4 final requirements and achieving significantly low fuel consumption. Trust the best for the toughest jobs in the world – anytime, anywhere.

[www.tougher-whatever-the-conditions.com](http://www.tougher-whatever-the-conditions.com)



Series 1300



*Power. Passion. Partnership.*

## New landmark healthcare facility completed in Singapore

The landmark National Heart Centre in the centre of Singapore has been completed. Broadway Malyan acted as lead design consultant on the 48,000 sq m, 12-storey building, with support from local consultancy Ong & Ong.

Broadway Malyan was selected through an open competition for the £175 million project and has provided a wide range of services, including architectural, landscape architectural and interior design services.

The project forms part of Singapore's general hospital redevelopment masterplan - believed to be the largest of its kind in the country - with the Broadway Malyan-designed 17-ha mega healthcare city recently launched in Singapore. When completed in 2030, it will serve 30,000 patients, visitors, staff, students and residents a day. The floor space will be increased from 250,000 to 600,000 sq m, the number of beds will be increased by 25 percent to 2,200 and 10 buildings will be physically connected, including Tan Tock Seng Hospital. ■



Singapore's National Heart Centre has been completed. Broadway Malyan acted as lead design consultant on the 48,000 sq m, 12-storey development.

## IPC Global joins Controls Group

IPC Global, one of the leaders in design and development of advanced material testing technologies for asphalt, soil and unbound materials headquartered in Australia, has been acquired by Italy-based Controls Group, one of the global leaders in testing equipment for the construction industry.

Pasquale Di Iorio, president and majority shareholder of Controls Group, emphasised that IPC Global will continue to play its global leadership role as an autonomous entity, capitalising on its valuable and solid existing distribution network. IPC Global will further develop its position in the high-end market by continuously enhancing and extending its advanced product range through innovative technologies, while benefitting from the industrial and financial support of Controls Group.

"I am confident we made the right choice for the future of our employees, customers, partners and business allies. We continually aim to understand our customers' needs and support them with innovative solutions to their testing challenges. This is and will continue to be the IPC Global philosophy," said Kieran McGrane, who will continue to act as CEO of IPC Global following completion of the sale. ■

## Leighton wins road project in NZ and builds new commercial tower Australia

The NZ Transport Agency and Leighton Contractors have signed a contract to upgrade a 2 km section of Auckland's State Highway 16 (Northwestern motorway), from the St Lukes Road interchange in Western Springs to the Great North Road interchange in Waterview.

Under the NZ\$70 million contract, Leighton will widen the motorway from three to four lanes in each direction and make improvements to ramps and the motorway overbridge at the St Lukes Interchange. The new layout and additional lanes are expected to relieve congestion and improve safety in the area.

The project is part of the Transport Agency's Western Ring Route, which will provide an alternative motorway link between Manukau City and Albany, bypassing Auckland's city centre and the Auckland Harbour Bridge.

Furthermore, construction is now underway at 177 Pacific Highway in North Sydney, Australia, following a formal groundbreaking ceremony at the 2,418 sq m site. The new A\$413 million, 40,000 sq m, 30-level commercial tower is being developed by Leighton Properties and built by Leighton Contractors. It is set to become the Leighton Group's new global hub.

Designed by Bates Smart, the building is scheduled for completion and occupancy in early 2016. The development will use efficient and flexible design, and target the achievement of 5 Star Green Star and 5 Star NABERS energy ratings for the building. The building will house the Leighton Group's New South Wales workforce of 2,500 people and be the company's purpose-built headquarters. ■

## Lend Lease secures Pacific Highway upgrade contract

Lend Lease has secured a contract with NSW Roads and Maritime Services for the Oxley Highway to Kundabung Pacific Highway upgrade project, Australia. The contract value is approximately A\$580 million.

The project includes the design and construction of 23 km of upgrade works to the Pacific Highway, from the Oxley Highway

interchange at Port Macquarie to Kundabung. The project includes major bridge crossings across the Hastings River and Wilson River.

According to Lend Lease, the contract was the third package of upgrade works on the Pacific Highway currently being undertaken by the company. ■

**We welcome your visit**

**Vertikal Days 2014 (UK)**

14th and 15th May 2014

OUTDOOR BOOTH: **133**

**CTT'2014 (Russia)**

3-7 June 2014

OUTDOOR BOOTH: **2-320**

**APEX 2014 (Netherlands)**

24-26 June 2014

INDOOR BOOTH: **530**

**iL<sup>®</sup> Dingli**



**AMWP11.5-8100**



**ZHEJIANG DINGLI MACHINERY CO.,LTD.**

Tel: +86-572-8681688 Fax: +86-572-8681690 market@cndingli.com export@cndingli.com

Add: No.1255 Baiyun South Road, Leidian Town, Deqing Zhejiang China



## Volvo inaugurates Jinan Technology Centre

Volvo Construction Equipment (Volvo CE) has strengthened its commitment to the Chinese construction equipment market with the opening of its Jinan Technology Centre in Shandong province, China. According to the company, engineers at the 50,000 sq m site will specifically focus on developing products and components for customers in emerging markets. The SEK 270 million centre combines design offices with workshops and facilities for testing both complete machines and components. Currently there are more than 150 employees working at the centre, the majority of which are local engineers. Employee numbers are set to grow – the site can accommodate up to 450 people.

“Opening a technical centre in China plays an important role in Volvo CE achieving its growth ambitions,” said Anders P. Larsson, executive vice president of Volvo CE’s Technology function. “The Jinan Technology Centre is an important element in our plan to have a global footprint of engineering and design resources. The facility will help us to expand and develop Volvo CE’s global product portfolio.”

The Jinan Technology Centre consists of a test track, design offices and two testing buildings, which include component and prototype assembly workshops, as well as areas for testing the performance and structure of equipment. While the new facility was under construction, the team at the Jinan Technology Centre produced positive results from their initial, temporary location. The successful development of the L105 wheel loader – the first Volvo branded machine to be developed specifically for emerging markets – demonstrated the capabilities of the engineers there. Volvo said the L105 was developed over a period of 25 months and launched at the end of 2012. Future projects at the site include developing excavators, wheel loaders and road and utility products – all specifically designed for emerging markets.



The new Volvo Construction Equipment Jinan Technology Centre will specifically focus on developing products and components for customers in emerging markets.

“Emerging markets present an attractive and growing opportunity for Volvo CE to provide customers with high quality products that are tailored to their specific needs,” said Mats Sköldberg, president of Volvo CE Technology, China. “Volvo Construction Equipment specifically chose to invest in the city of Jinan – confirming our confidence in local engineering. China is the biggest, and now perhaps the most important, market for us and we know that it is vital to have a design and manufacturing presence where the machines are used. It gives us a greater understanding of our customers and their needs – and that’s a big advantage in today’s highly competitive global marketplace. With this new facility we will be able to provide machines tailored to the needs of the marketplace and deliver them to customer specifications in a shorter lead time.” ■

## Shinsegae begins construction on new mixed-use retail transit hub in South Korea

Shinsegae has begun construction on the nearly 145,000 sq m Kimhae Centre located in South Gyeongsang Province. Designed by The Jerde Partnership, the new centre integrates outdoor culture and community spaces with five levels of retail and entertainment, along with major transportation facilities.

As one of the largest multi-use retail centres in the province, Kimhae Centre combines major project components: an on-site bus terminal, which is directly connected to a Shinsegae shopping centre that includes new-to-market tenants and intimate seven-screen cinema; and an adjacent E-Mart discount anchor. The bus terminal has completed construction, and pilings for the commercial centre recently started. The centre’s signature community spaces incorporate a large outdoor public park and entry plaza at street level, terracing cafe decks along the upper levels, and a rooftop Sky Park garden.

Jerde has created a modern design that blends with multiple open areas to enhance connections to the local Kimhae landscape and culture. The multi-level retail centre’s clean, contemporary architecture is sculpted to provide distinct visibility along the main Kimhae-daero highway and parallel metro line. On the opposite side along Jeonha-ro, the project’s main entry is highlighted by a new community park designed with a minimalist aesthetic, including horizontal banding and patterned concrete, floating elements with warm lighting, outdoor seating and geometric landscape.



Rendering view of community park and main entry.

The park also has a sunken cultural event space composed of a public amphitheatre, performance area and serene water features. On the centre’s roof level, the Sky Park garden offers panoramic views to the scenic city, mountains and waterways, providing a unique retail experience with walkways, seating and lush landscape. ■

# LiuGong.Tough World. Tough Equipment.<sup>SM</sup>



fuel efficiency  
reliable  
agile



more  
digging  
depth



versatile



greater  
reach

**LIUGONG E series** excavators are powered by Cummins engines which are specifically made for excavators. These excavators are built for fuel efficiency and fast response operation, they offer powerful digging force and delivery, more lift capacity and higher breakout force. They are also highly versatile and reliable for any work applications.

## SOUTH EAST ASIA

### CAMBODIA

+00855.23998231

### EAST TIMOR

+00670.331.0440

### INDONESIA

+0062.21.29025810  
+0062.511.470.5955

### LAOS

+0085.6.021265058

### MALAYSIA

+00603.8068.4888

### MYANMAR

+00951.613629

### PHILIPPINES

+0063.2.7491215

### PAPUA NEW GUINEA

+00675.323.7004

### SINGAPORE

+0065.68620769

### TAIWAN

+00886.4.737.6868

### THAILAND

+0066.35.361495

### VIETNAM

+0084.4.35372815

## OCEANIA

### AUSTRALIA

+0061.8.945751600

### FRENCH POLYNESIA AND NEW CALEDONIA

+00689.504.106

### NEW ZEALAND

+0064.9.2362008

## LIUGONG MACHINERY ASIA PACIFIC PTE. LTD

7 Tuas Loop, Tuas Connection  
Singapore 637339  
Tel: +65 6686 3566  
Fax: +65 6686 6522  
Email: lgap@liugong.com

 **LIUGONG**  
www.liugong.com

## Hong Tai expands Liebherr crane fleet

Hong Tai International Crane Engineering Co, based in Kaohsiung City, Taiwan, has taken delivery of two new Liebherr mobile cranes. The acquisition of the LTM 1750-9.1 and LTM 1100-5.2 will extend the company's large telescopic crane and mid-range fleet respectively. According to Hong Tai, the main criteria for choosing the LTM 1750-9.1 included the excellent load capacities and flexibility of the new 750 t model. The crane was bought with an extensive range of equipment to make it suitable for a wide range of applications.

Hong Tai plans to use its new cranes for jobs in refineries and steel mills as well as for the erection of tower cranes. The company currently has a workforce of around 100, with 33 mobile cranes in its fleet. It has a total of 15 cranes with a load capacity of 90 t or more, all of which bear the Liebherr brand name.

Hong Tai also has lots of experience with mobile cranes in the very high load capacity class as its fleet has included an 800 t LTM 1800 for many years. The company said that the good quality and progressive technology on the Liebherr machines, plus the manufacturer's fast, reliable service, were also some of the reasons for buying more Liebherr cranes. In addition, Hong Tai has a long term relationship built on trust with both Liebherr and Liebherr's sale and service partner Hector Machinery. ■



From left: JR Wang, Hector Machinery; Christoph Kleiner, Liebherr-Werk Ehingen GmbH; Chao-Cheng Lu, Hong Tai; Chao-Shun Lu, Hong Tai; Chiu-Yun Lu Tsai, Hong Tai; Jui-Mei Lu Hung, Hong Tai; and Marcel Beck, Liebherr-Werk Ehingen GmbH.

## Atkins completes plan for Dongliang River restoration and landscape design

Atkins has completed a plan for the Dongliang River restoration and landscape design, which creates a new ecological leisure destination in Chongqing, China and mitigates existing environmental risks such as flooding and poor water quality. "Development of the Chongqing area meant that the city needed a design strategy for dealing with flood and poor water quality issues affecting the central Dongliang river. This was a heavy engineering task but it had to be handled sensitively as our other prime directive was to ensure the waterway evolved into an attractive urban feature," explained Dr Yufeng Guo, Atkins' director for water engineering in China.

Edgardo Budoy, Atkins' project director in China, added, "Our design approach is to integrate engineering and art whilst being sympathetic with the local environment. Our plan is to merge the river and land by providing support facilities for activities such as water sports, fishing and rock climbing. We also aim to establish a cultural waterfront development and a visitor centre along the riparian landscape, ensuring the whole area is walkable and cycle-friendly."

Chongqing has 29 million inhabitants and it is hoped the enhanced river landscape will also encourage new waves of tourists that will help bring growth and regenerate the surrounding district. According to Atkins, it is one of the first projects in China initiated



Atkins has completed a plan for the Dongliang River restoration and landscape design, which creates a new ecological leisure destination in Chongqing.

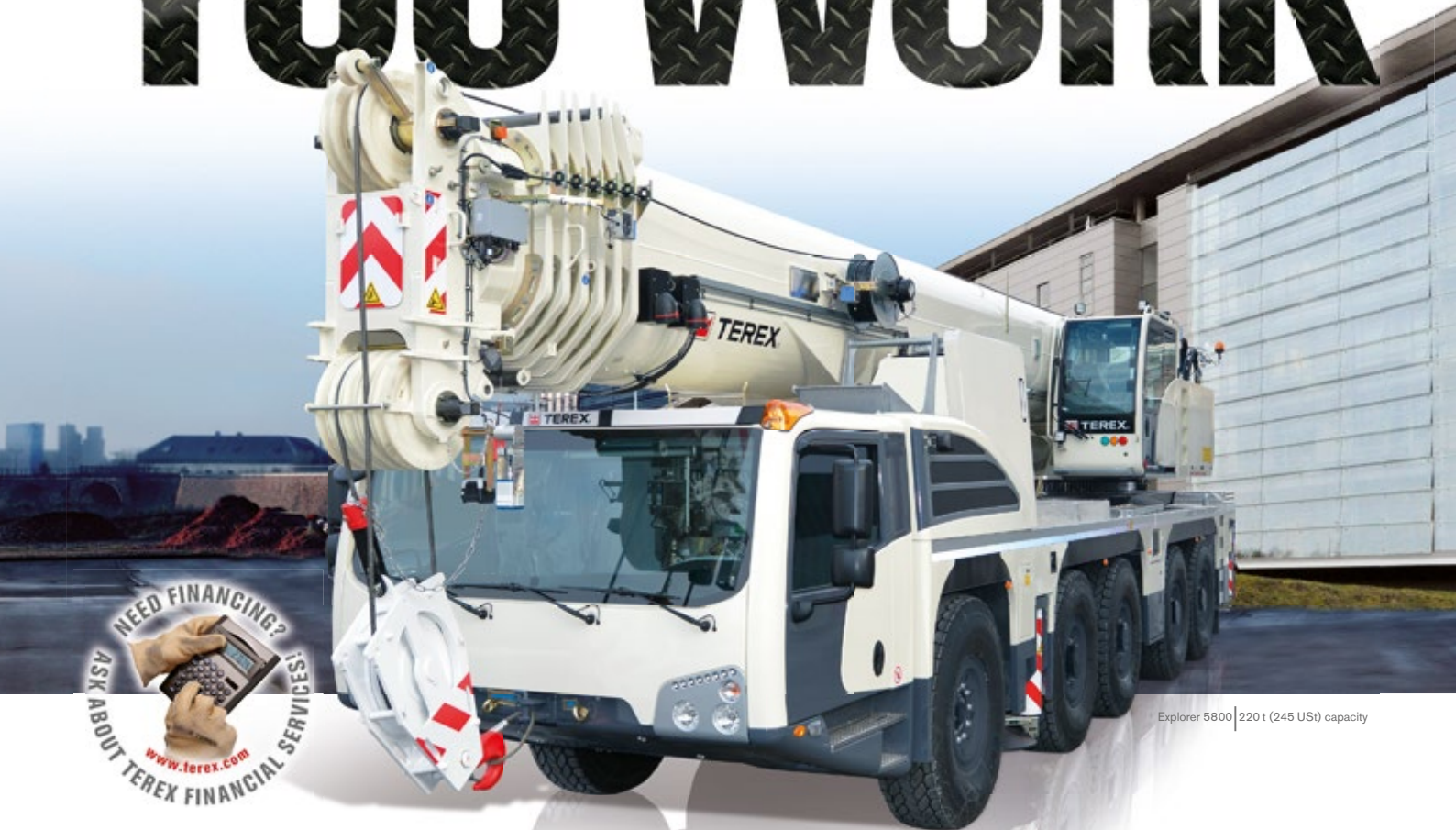
to tackle the major urban problem of water contamination and ecology civilisation, which is gaining increasing political and social importance both at the city and central government level. The company said it has brought in a multidisciplinary team to work on the project, including water engineers, landscape architects, urban planners and tourism consultants. ■

## LiuGong set to develop Chinese track-mounted crushing and screening business

LiuGong and Metso have obtained all necessary approvals from the Chinese authorities and the joint venture between the two companies has been officially established. Headquartered in Shanghai, LiuGong Metso Construction Equipment (Shanghai) Co Ltd, will combine Metso's know-how in track-mounted crushing and screening business and technology with LiuGong's extensive distribution resources and manufacturing capabilities in China.

The initial scope of the joint venture will cover the design and manufacture of localised versions of Metso's Lokotrack mobile crushers and screens, first of which is expected to be launched during the first half of 2014. The products, whose range may be further expanded in the future, will be sold under dual branding - LiuGong Metso. The joint venture will also promote Metso's global track-mounted crushing and screening equipment in China. ■

# BUILT FOR THE WAY YOU WORK



Explorer 5800 | 220 t (245 US) capacity



“ We have been loyal to the Terex brand for many years. All our Terex cranes have performed well, been extremely reliable and have met and in many cases exceeded our expectations. ”

Eddie McGovern  
McGovern Crane Hire, UK

## Designed with you in mind:

- ▶ Large lifting capacities and long boom reaches to handle a wide variety of jobs
- ▶ Fast set up times and easy servicing so that your crane will be ready for work right away
- ▶ Great mobility and outstanding manoeuvrability to get you to the job site quickly and efficiently



Contact us to learn  
how we can work for you.

[www.terex.com/cranes](http://www.terex.com/cranes)



Challenger 3160



AC 350/6



AC 1000

Ask about our full range of all terrain cranes.



# TEREX®

## WORKS FOR YOU.™

## ADB supports tunnel and road projects in Nepal and India

The Asian Development Bank (ADB) will provide an additional US\$25 million loan to Nepal to complete the Melamchi tunnel and help alleviate a severe water shortage in the Kathmandu Valley.

ADB approved a restructured US\$137 million loan in February 2008 for the then US\$317 million Melamchi Water Supply Project but the completion was delayed by political and economic uncertainties in Nepal, changes to the project design, and, most recently, the need to find a new contractor to complete the tunnel construction. ADB's additional funds, along with an extra US\$13.1 million from the government of Nepal, means the overall cost is now estimated at US\$355.4 million.

Under the project, Cooperativa Muratori e Cementisti di Ravenna, an Italian construction firm, is contracted to complete the 27.5 km Melamchi tunnel by the end of September 2016. The tunnel will take 170 mil l of water per day from the Melamchi River to Kathmandu. A water treatment plant, financed by the Japan International Cooperation Agency, is under construction in Sundarijal on the outskirts of Kathmandu that will treat the water brought through the Melamchi tunnel.

In addition, improvements to the Kathmandu Valley water transmission and distribution network are underway with an US\$80 million ADB loan, made in 2011, to take water from the treatment plant to households and reduce water lost to leakages. ADB approved another US\$80 million loan in April 2013 to expand and rehabilitate

the sewerage network and build wastewater treatment plants to deal with more than 90 mil l of wastewater per day in the Kathmandu Valley.

As part of the overall Melamchi project, ADB is also promoting reforms in Nepal's urban water sector including creating an independent water management board, setting up an independent commission to regulate water tariffs, and establishing an autonomous company for water and wastewater service delivery in the Kathmandu Valley.

### Improving roads in India's northeastern region

ADB will also provide a US\$125.2 million loan to India, which will be used to upgrade roads in the country's northeastern region. The North Eastern States Roads Investment Program is designed to reconstruct roads in the northeastern states of Assam, Manipur, Mizoram, Tripura, Meghalaya and Sikkim, thereby reducing their isolation and opening up badly needed growth and development opportunities. Improvements include widening existing sections of roads, strengthening pavements, raising embankments and providing permanent structures at river crossings.

The project is expected to be completed in September 2019 with improvements to more than 236 km of roads in Assam, Manipur, Mizoram and Tripura states. The loan agreement for the first phase of the project, covering around 200 km of state roads in the states of Assam, Meghalaya and Sikkim, was signed in July 2012. ■

## Vinci to supply and install stay cables for third Bosphorus bridge

Freyssinet, a subsidiary of Vinci Construction, has signed a contract with Hyundai Engineering & Construction - SK Engineering & Construction Joint Venture to supply and install the stay cables and dampers for the third Bosphorus bridge in Istanbul, Turkey.

The structure will be part of the North Marmara Motorway, which will bypass the city and cross the Bosphorus to the north of Istanbul, thus relieving road traffic in the city and on the two existing bridges. The crossing's innovative design will include a 1,408 m central span with a 58 m wide deck carrying a 2 x 4 traffic lanes and two railway lines in the middle.

The deck will be supported by a hybrid suspension system comprising 176 Freyssinet stay cables requiring 8,400 t of steel and made up of parallel strands, the longest of which has a length of 588 m; two 2,420 m suspension cables holding 34 pairs of vertical hangers supporting the central section of the deck.

Installation of the stay cables is planned to get underway in September 2014 and be completed in July 2015. With this new project, Freyssinet is expected to set a new record for the world's longest cable-stayed bridge, following the Normandy bridge in 1994



Installation of the stay cables for the third Bosphorus bridge is planned to get underway in September 2014 and be completed in July 2015.

(856 m) and the Russky Island bridge in 2012 (1,104 m, claimed to be the current world record). ■

## Turner & Townsend wins UAE hospital project

Turner & Townsend has been appointed as consultants for the construction of Mediclinic City Hospital's new North Wing, located within Healthcare City, Dubai. The new 20,000 sq m facility will include oncology and day wards, operating theatres, laboratories, and physio and dialysis clinics, alongside corporate offices housing support staff.

As project managers, Turner & Townsend has been working to achieve operational completion by the third quarter of 2015, employing expertise in both the region and wider healthcare sector to assure success. The company said it will soon appoint the building's design team, with tendering for the full works package to follow. ■

# VERMEER ADDS A MEASURE OF PRECISION TO SURFACE MINING.



THIS IS WHERE THE NAME ON THE MACHINE MATTERS MOST. Whether you're facing the hassles of blasting or hammering, Vermeer and our global dealer network will be right beside you. We know the conditions you face are demanding — that's why we make sure our equipment is up to the task. The Vermeer Terrain Leveler® surface excavation machine helps you get more value from the mine, while reducing the need for costly support equipment.

So when it's tough going out there, look to Vermeer — the trusted name for proven equipment and reliable support.

Vermeer Asia Pacific  
Tel: 65-6516 9560  
Email: [vapinfo@vermeer.com](mailto:vapinfo@vermeer.com)  
VERMEER.COM

**Vermeer**  
  
EQUIPPED TO  
DO MORE.™

## Sandvik appoints Russian distributor for Rammer

Sandvik Construction has appointed Komek Machinery as its official Russian distributor for Rammer premium hydraulic breakers. Through this collaboration, Sandvik aims to strengthen its position in the Urals and western Siberia, whilst providing customers throughout Russia with better access to the Rammer premium breaker range.

Since its foundation in 2001, Komek Machinery has swiftly developed a reputation for excellence, offering a wide range of specialised equipment and attachments for the mining, oil, gas and construction industries. From its head office located in Yekaterinburg, the company has rapidly extended its market coverage through a support network of 16 offices located throughout the Urals, western Siberia and Kazakhstan.

In addition to supplying the breaker range, Komek will provide high-quality aftermarket service support, with Komek engineers having already successfully completed a service and maintenance programme.

“One of our key strategic aims in Russia is to provide extensive service coverage, especially in emerging regions with high rates of industrial growth. Now we see a great need for expansion in the Urals and western Siberia,” said Martin Friedl, vice president for sales area Russia at Sandvik Construction. ■

Komek Machinery has been appointed as the official distributor for Rammer premium hydraulic breakers in Russia.



## Ammann acquires concrete plant manufacturer Elba

Ammann Group and Elba have concluded the contract on the acquisition of all shares in Elba-Werk Maschinen-Gesellschaft mbH by Ammann. This move is aimed to strengthen Ammann’s position on the international market for concrete mixing plants. It will also complement the Group’s existing asphalt mixing plant and machine divisions.

Founded in 1948, Elba is a global manufacturer of high-quality concrete mixing plants based in Ettlingen, Germany. All plant parts and components are developed, designed and manufactured in Ettlingen by a team of around 130 qualified employees. The company supplies to customers all over the world, including those in Central Europe, Russia/CIS, Middle East and North Africa.

As Ammann is taking on the existing management crew, the subsidiary in Ettlingen will become the concrete centre of the Ammann Group. This alignment and the synergies in the fields of plant control and mixing processes make the acquisition an ideal

complement to Ammann as a supplier and service provider to the construction industry.

“We are delighted to have found in Elba the ideal partner in the concrete plant segment. We are now in a position to meet the needs of our customers worldwide with well-established, high-quality concrete plants developed and manufactured in Germany,” said Hans-Christian Schneider, group CEO of Ammann.

Axel Bullinger, former managing director of Elba and now managing director of the new Ammann subsidiary in Ettlingen, added, “Integration into the Ammann Group and investments in the site will provide the security and opportunity to continue improving and marketing our products in the long term under the roof of a globally operating corporation. The existing network of Ammann subsidiaries and contract partners will bring us even closer to our customers. I am convinced that the extended product portfolio is a decisive step forward both for Ammann and my team in Ettlingen.” ■

## London’s new landmark completes

The new addition to London’s skyline, ‘The Tower, One St George Wharf’, has been completed. Designed by Broadway Malyan, developed and constructed by St George South London and built by contractor Brookfield Multiplex, the 320,000 sq ft building stands at just over 180 m – making it the tallest residential tower in London to date, providing 213 luxury apartments over 50 storeys.

Apart from its elegant design, the building requires significantly less gas or electrical energy for heating, cooling, lighting and ventilation than that of a conventional tall building, which results in significant CO<sub>2</sub> emission savings over its lifespan, said Broadway Malyan. Energy savings are made through the use of a ventilated cavity

facade with motorised interstitial blinds, hi-performance solar control and low ‘e’ coatings. In addition, the sky gardens act as a thermal buffer and opening windows in all habitable rooms reduce residents’ reliance on air conditioning.

A significant amount of the building’s energy is obtained from renewable sources. A 10 m high vertical axis wind turbine on top of the building generates sufficient energy to power the lighting in the common areas. The building also draws water from the London’s aquifer deep below ground and uses heat exchange technology for heating and cooling.

Planning permission was granted in July 2005, and construction work started in February 2009. ■



*Made in Japan. Work for All.*



**NK-300VR**

 **30ton**



**SR-300L**

 **30ton**



**SR-700L**

 **70ton**



**NK-550VR**

*Right hand and Left hand steering can be chosen.*

 **55ton**

**KATO**  
KATO WORKS CO.,LTD.

9-37, Higashi-ohi 1-chome, Shinagawa-ku, Tokyo, 140-0011, Japan  
Telephone : +81(0)3 3458-1115 Email : marketing@kato-works.com

[www.kato-works.co.jp](http://www.kato-works.co.jp)

## Exports of US-made construction equipment decline 25 percent in 2013

Exports of US-made construction equipment dropped 25 percent in 2013 compared to the previous year for a total US\$20 billion shipped to global markets, according to the Association of Equipment Manufacturers (AEM), citing US Commerce Dept. data it uses in trend reports for members. All world regions recorded declines.

AEM noted that the 25-percent decline for 2013 follows three years of export growth (13 percent in 2012, 43 percent in 2011 and 28 percent in 2010), after a 2009 decline of 38 percent in the depths of the recession.

Exports to Europe declined 19 percent for a total US\$2.6 billion, and dropped 16 percent to Canada for a total US\$6.8 billion; exports to Asia decreased 33 percent to US\$2.1 billion; exports to Central America dropped 2 percent to US\$2.2 billion,

with exports to South America declining 22 percent to US\$3.6 billion. Australia/Oceania's export purchases decreased 66 percent to US\$1.3 billion, while exports to Africa dropped 13 percent to US\$1.3 billion

The top export destinations for American-made construction machinery in 2013 by dollar volume included Canada (US\$6.8 billion), down 16 percent; Mexico (US\$1.8 billion), down 1 percent; Australia (US\$1.2 billion), down 68 percent; Chile (US\$999 million), down 40 percent; Brazil (US\$890 million), down one-half percent; South Africa (US\$674 million), down 25 percent; Peru (US\$638 million), down 18 percent; Belgium (US\$617 million), down 24 percent; Colombia (US\$562 million), up 1 percent; Russia (US\$548 million), down 23 percent; and China (US\$380 million), down 44 percent. ■

## RFR and Vanke break ground on new luxury residential tower in NY

RFR Holding and Vanke, one of China's largest residential real estate developers, have broken ground on a new luxury residential condominium on East 53rd Street in New York, USA, located adjacent to the landmark Seagram Building.

Designed by Foster + Partners, the new development will rise 700 ft and 61 stories. Its design features a pure white facade with undulating glass, in a sleek, slim, simple shape. It is centrally located with its entrance on 53rd Street, in close proximity to a wide variety of businesses, restaurants, shopping, museums and entertainment.

RFR and Hines will work together on construction of the building through a joint development management agreement. ■



Work on a new luxury residential condominium in New York has begun. Designed by Foster + Partners, it will feature 700 ft and 61 stories.

## New VP of sales for Terex Cranes North America



Steve Headden (left) has joined the Terex Cranes North American team as vice president of sales, reporting to Dan Slater, vice president and general manager of Terex Cranes North America. Mr Headden will take on the responsibilities of leading the North American sales team, inside sales team, distributor development and working closely with manufacturing locations and customer support teams.

In 2013, Terex Cranes made a transition towards a regional based organisation, with the objective of becoming easier to do business with and being closer to customers. This new structure will give its customers the opportunity to contact

dedicated local team members to assist both with purchase and support for all the product lines from Terex Cranes.

“We have come a long way since we started this transition process towards a region based organisation,” said Mr Slater. “Steve’s vast experience and customer-centred philosophy will contribute tremendously towards adding value to our customer-focused organisation.”

Besides significant experience in the construction industry, Mr Headden has been with the Terex Aerial Work Platforms segment since 1999 in diverse customer centred roles such as director, business development, national account manager and regional sales manager.

“As Terex Cranes transitions from a factory-centred approach to a customer-centred approach, it gives us an opportunity to be closer to customers, to develop deeper relationships, and with this, to contribute to their businesses’ success more than ever,” said Mr Headden. ■

## Skanska signs contract for multi-family towers in Boston

Skanska has signed a contract for construction of multi-family towers in the Seaport District of Boston, Massachusetts, USA. The contract was awarded by Watermark Seaport, a joint venture partnership including Skanska USA Commercial Development and Twining Properties. Skanska will build the approximately 28,000 sq m Watermark Seaport project, which features a six-storey building and a 17-storey tower building, with a total of 346 rental units. Construction has begun and substantial completion is expected in March 2016. ■

SUSTAINABLE SOLUTIONS!



Close to  
our customers



# POWER

The **WR 240/WR 240i** from Wirtgen performs convincingly when it comes to soil stabilization and cold recycling. In addition to perfect ergonomics and operation, clever automatic functions and outstanding off-road mobility, the efficient engine and powerful milling and mixing performance ensure optimum results. Take advantage of solutions from the technology leader.

[www.wirtgen.com/recycling](http://www.wirtgen.com/recycling)



product  
design award

2013 GOLD



ROAD AND MINERAL TECHNOLOGIES

WIRTGEN SINGAPORE PTE LTD.  
No.5, Tuas Avenue 18A · Singapore 638854  
E-Mail: [wirtgen@wirtgen.com.sg](mailto:wirtgen@wirtgen.com.sg)

# Ritchie Bros. breaks records in Orlando and Las Vegas auctions

Ritchie Bros. Auctioneers has successfully held its auction in Orlando, Florida, USA, from 17 to 22 February 2014 selling more than 8,800 items for over US\$166 million. To date, it is believed to be the world's largest heavy equipment auction this year.

Ritchie Bros. said the six-day unreserved public auction set new company records for online sales, with online buyers generating more than US\$54 million in gross auction proceeds or 33 percent of total gross auction proceeds. Additional records broken include number of online registered bidders (4,400+), number of online buyers (1,000+), and a new Orlando permanent auction site record of sellers (830+). Every item at the auction was sold to the highest bidder, regardless of price - without minimum bids or reserve prices.

"Our February auction in Orlando continues to be our company's largest auction each year and this year is no different," said Peter Blake, CEO of Ritchie Bros. "Equipment owners from around the world and most notably from all across the eastern seaboard of the US send their equipment to our Orlando auction." But Mr Blake highlighted that due to the severe winter weather that hit the northeastern US, many of the sellers from the region who normally participate in the auction were unable to free up equipment from their job sites to add to the auction.

"We also noticed a lower volume of cranes in this year's inventory due to higher construction activity in the non-residential market," added Mr Blake. "However, simultaneously we saw a more diverse and larger selection of equipment from the energy and transportation equipment categories than previous years. This is an early reflection of our focused strategy to diversify and grow our volume in other sectors, in addition to heavy construction."

More than 830 sellers sold their equipment at the auction, and more than 8,640 registered bidders from 84 countries (including all 50 US states, all 10 Canadian provinces and one territory) participated both in person and online. More than US\$29 million was purchased by buyers from the state of Florida while more than US\$137 million (82 percent) was sold to buyers located outside the state, with more than US\$48 million (29 percent) being sold to buyers outside the country. Buyers participated from as far away as the United Arab Emirates, Guyana, Italy, Nigeria, Russia and Qatar.

"We saw strong prices in many areas, more specifically in the backhoe, aerial, truck and trailer, motor grader, and bulldozer categories. Even though our inventory count was slightly lower than in recent years, average sale prices were higher," said Steve Kriebel, regional sales manager at Ritchie Bros. "Additionally, we sold 80 percent more one-to-three-year-old equipment items in our core equipment categories, including wheel loaders, bulldozers, rock trucks, excavators, motor graders and forklifts."

## Las Vegas auction

Ritchie Bros. has also conducted a record-breaking US\$60+ million two-day auction in Las Vegas, Nevada, from 6 to 7 March 2014. According to the company, the unreserved public auction was the largest the site has ever conducted in terms of gross auction proceeds, number of registered bidders (4,750+), number of sellers (450+) and total number of buyers (900+).

The auction also broke multiple site records for online sales, including online gross auction proceeds (US\$19+ million), online registered bidders (2,900+) and online buyers (400+). In total, more than 2,350 equipment items were sold at the auction, with every item sold without minimum bids or reserve prices.

"Bidders participated actively from as far away as the United Arab Emirates, Vietnam and New Zealand," said Joe Byers, regional



Above: A selection of truck tractors lines up on the ramp at the Ritchie Bros. permanent auction site in Orlando.



Left: A crowd of bidders gather around the gigantic line-up of excavators on the third day of the Orlando auction.



Below: A selection of motor graders on the ramp at the Las Vegas auction.

sales manager at Ritchie Bros. "We witnessed competitive bidding on all equipment types, including a selection of late-model, low-hour motor scrapers and more than 100 truck tractors."

More than 4,750 registered bidders from 63 countries, including 48 US states, nine Canadian provinces and two territories, participated in the Las Vegas auction. More than US\$54.5 million of the equipment was sold to buyers outside the state of Nevada, with more than US\$17 million (close to 30 percent) sold to buyers outside the country. ■

# Off the truck and ready for work!

**Versatile. Mobile. Robust. Simple. Reliable.**



## **New!** **TCC-500**

### **51mt Telescopic Crawler Crane**

- 35.2m maximum main boom tip height
- Four-section, full power boom
- Remarkable control, reliability & capacity performance
- Simple and dependable hydraulic pilot-operated controls
- Superior jobsite mobility, able to go places other cranes can't
- Spacious cab with camera monitoring
- Transport in one load with counterweight
- Minimal "work at height" maintenance points
- Compact profile for "go anywhere" conditions
- Whisper quiet operation
- Best distributor support network in the world

#### **AUTHORIZED LINK-BELT DEALERS**

**AUSTRALIA**  
The Baden Davis Crane  
Connection Pty Ltd  
Arndell Park  
+02-9679-8333

**INDONESIA**  
PT Traktor Nusantara  
Jakarta  
+62-21-460-8836

**PAKISTAN**  
Premier Commercial Corporation  
Karachi  
+92 215874533

**PHILIPPINES**  
Asia Industries Material Handling  
Equipment Corp.(AIMHEC)  
Pasay City  
+63-2-851-4778

**SINGAPORE**  
Tat Hong Heavy Equipment  
(PTE) Ltd.  
Singapore  
+65-6269-0022

**SOUTH KOREA**  
Kilwoo Corporation  
Seoul  
+ 82-2-728-6800

  
**Link-Belt**  
C R A N E S

LINK-BELT CONSTRUCTION EQUIPMENT  
Lexington, Kentucky, USA | [www.linkbelt.com](http://www.linkbelt.com)

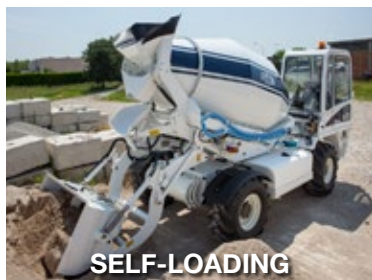
**Contact your authorized Link-Belt distributor about the TCC-500 today!**

Date	Events in Asia	Organiser & Contact
7 to 9 May 2014	OS+H Asia 2014 Suntec Singapore Singapore	Messe Düsseldorf Asia Pte Ltd Tel: +65 6332 9620, Fax: +65 6337 4633 Email: osha@mda.com.sg Website: www.osha-singapore.com
7 to 9 May 2014	Build4Asia 2014 Hong Kong Convention & Exhibition Centre Hong Kong	Hong Kong Exhibition Services Ltd Tel: +852 2804 1500, Fax: +852 2528 3103 Email: exhibit@hkesallworld.com Website: www.build4asia.com
22 to 24 May 2014	BuildTech Yangon 2014 Myanmar Convention Centre Yangon Myanmar	Sphere Exhibits Pte Ltd Tel: +65 6319 4021, Fax: +65 6319 6140 Email: sphere@sph.com.sg Website: www.btyangon.com
2 to 4 Jun 2014	Trenchless Asia 2014 Marina Bay Sands Convention Centre Singapore	Westrade Group Ltd Tel: +44 845 094 8066, Fax: +44 870 429 9275 Email: trenchless@westrade.co.uk Website: www.trenchlessasia.com
25 to 28 Jun 2014	Archidex 2014 Kuala Lumpur Convention Centre Kuala Lumpur Malaysia	CIS Network Sdn Bhd Tel: +603 7982 4668, Fax: +603 7982 1648 Email: info@archidex.com.my Website: www.archidex.com.my
16 to 19 Jul 2014	OneBuild 2014 Putra World Trade Centre Kuala Lumpur Malaysia	One International Exhibition Sdn Bhd Tel: +603 8943 7488, Fax: +603 8943 7599 Email: info@oneinternational.com.my Website: www.oneinternational.com.my
10 to 12 Sept 2014	Cambuild 2014 Diamond Island Exhibition & Convention Centre Phnom Penh Cambodia	AMB Events Sdn Bhd Tel: +603 4041 9889, Fax: +603 2770 5301 Email: richard@ambexpo.com Website: www.expo cambodia.com
11 to 14 Sept 2014	OneBuild@JB 2014 Danga City Mall, Johor Bahru Johor Malaysia	One International Exhibition Sdn Bhd Tel: +603 8943 7488, Fax: +603 8943 7599 Email: info@oneinternational.com.my Website: www.oneinternational.com.my
8 to 11 Oct 2014	Buildtech Malaysia 2014 Putra World Trade Centre Kuala Lumpur Malaysia	Trade Link ITE Sdn Bhd Tel: +603 7842 9863, Fax: +603 7842 7863 Email: info@tradelink.com.my Website: tradelink.com.my/buildtech
15 to 17 Oct 2014	BuildTechAsia 2014 Singapore Expo Singapore	Sphere Exhibits Pte Ltd Tel: +65 6319 4021, Fax: +65 6319 6140 Email: buildtechasia@sph.com.sg Website: www.buildtechasia.com
25 to 28 Nov 2014	bauma China 2014 Shanghai New International Expo Centre Shanghai China	Messe München International Tel: +49 89 949 20251, Fax: +49 89 949 20259 Email: info@bauma-china.com Website: www.bauma-china.com
9 to 11 Dec 2014	Myanbuild 2014 Tatmadaw Exhibition Hall Yangon Myanmar	AMB Events Sdn Bhd Tel: +603 4041 9889, Fax: +603 2770 5301 Email: nadia@ambexpo.com Website: www.myanbuild.net
15 to 18 Dec 2014	bC India 2014 India Expo Centre Greater Noida, Delhi India	Messe München International Tel: +49 89 949 20255, Fax: +49 89 949 20259 Website: www.bcindia.com
Date	Events outside Asia	Organiser & Contact
8 to 11 May 2014	Samoter 2014 Verona Exhibition Centre Verona Italy	Veronafiery Tel: +39 045 8298111, Fax: +39 045 8298288 Email: info@veronafiery.it Website: www.samoter.com

24 to 26 Jun 2014	APEX 2014 Amsterdam RAI Convention Centre Amsterdam The Netherlands	BV Industrial Promotions International Tel: +31 547 271566, Fax: +31 547 261238 Email: marleen@ipi-bv.nl Website: www.apexshow.com
17 to 20 Nov 2014	PMV Live at The Big 5 2014 Dubai World Trade Centre Dubai UAE	DMG Events Tel: +9714 438 0355, Fax: +9714 438 0356 Email: pmv@dmgeventsme.com Website: www.pmvlive.com
3 to 6 Feb 2015	World of Concrete 2015 Las Vegas Convention Center Las Vegas, Nevada USA	Hanley Wood Exhibitions Tel: +1 972 536 6300, Fax: +1 972 536 6301 Email: contactus@worldofconcrete.com Website: www.worldofconcrete.com
20 to 25 Apr 2015	Intermat 2015 Paris-Nord Villepinte Paris France	Intermat Construction Email: contact@intermatconstruction.com Website: www.intermatconstruction.com
21 to 24 Oct 2015	ConExpo Latin America Espacio Riesco Convention Centre Santiago Chile	Association of Equipment Manufacturers Tel: +1 414 298 4138 Email: sales@aem.org Website: www.conexpolatinamerica.com
11 to 17 Apr 2016	Bauma 2016 Munich Trade Fair Centre Munich Germany	Messe München GmbH Tel: +49 89 949 11348, Fax: +49 89 949 11349 Email: info@bauma.de Website: www.bauma.de



## CONCRETE BATCHING VEHICLE



### CERTIFIED CONCRETE. ANYTIME, ANYWHERE.

FIORI GROUP's Concrete Batching Vehicles (CBV series) produce Certified Concrete anywhere anytime in all job sites for all kind of applications.

These four-wheel drive machines are true batching plants equipped with highly-advanced yet simple to operate controls and mixing systems which facilitates production of Certified Concrete of any mix design.

Easy to maneuver, technologically advanced, and carefully designed down to the last detail, the CBV series presents the construction industry with brand new opportunities.



#### AUTHORISED DEALERS

**INDONESIA** - PT. Tugu Beton Semesta Abadi  
Ir. SE. Yoedhyono, Direktur. Mobile: +62 8164882110  
E mail - yudiandaru@yahoo.com

**BANGLADESH** - Virtual Marketing & Trading Company  
Md. Khairul Islam, CEO. Mobile: +880 1711619065  
E mail - khairul.concrete@gmail.com

**PHILIPPINES** - CONCRETE MASTERS INC.  
Mr. Christopher Imperial, Director.  
Mobile: +63 9178826957, +63 9228262526  
E mail - chrisimperial@yahoo.com

#### FIORI ASIA PACIFIC PTE LTD. SINGAPORE

Siva Ramalingam - General Manager  
Mobile: +65 96439942  
E mail: siva.ra@fiorigroup.com  
www.fiorigroup.com



\*\* Dealership enquiries invited for Laos, Thailand, Malaysia, Vietnam, Cambodia & PNG \*\*

# Concrete Floors Asia holds successful Mega Demo in Thailand

Concrete Floors Asia (CFA) has successfully conducted its second Mega Demo in September 2013, which was held at the INSEE Technical Services Centre (ITSC) in Pathumthani, Thailand. According to CFA, the event had an increased attendance of over 175 participants including delegates from India, China, Myanmar and Vietnam, to name a few.

Headquartered in Malaysia, CFA is a consortium of companies whose key objectives are to bring new information and expertise to organisations that are involved in the design, construction and delivery process of concrete floors as well as owners and operators who use concrete floors.

The CFA Mega Demo is an annual event targetted at the concrete and flooring construction industry in Southeast Asia, which features CFA's supporters showcasing their innovative products and technologies. "This is the kind of event where attendees could see, feel and touch what's new," said Ian Burnett, president of CFA. "You could not get this kind of information from the Internet or a website."

One of the supporters at the event was Ancon Beton, an Australia-based consulting company (with a Singapore office) that specialises in general construction as well as floor and pavement construction in Australia, New Zealand and Southeast Asia. Ancon is the initiator and one of the founding members of CFA.

VSL demonstrated post tensioned floors with its new 100 year design life VSlab anchors and PT plus duct system. The new system can also be applied to slab on grade, suspended floors and civil engineering applications.

Lesas Systems demonstrated several versions of its popular Armour Joint Systems. The company also supplied and installed the Lesa Armour Joint & Lesa Dominator Plate Dowels and Sleeves, which were utilised in the main 'live cast slab' on the day.

Scancem Materials explained to the participants the benefits of using steel fibre in floors, such as increasing ductility, impact and fatigue resistance aside from reducing crack widths and simplifying construction of floors. The company also showed how easy to mix its specially designed glued steel fibres and degradable bags on site.

Holcim's partner, Siam City Concrete (SCCO) presented three concrete solutions: INSEE FloorCrete, INSEE Self Compacting Concrete and INSEE ThruCrete.

Curecrete Distribution demonstrated the benefits of the Ashford Formula on a new concrete floor, which helps to cure, dustproof and increase the hardness of the concrete surface within the first 10 hours of application.

Sika demonstrated a variety of flooring technologies and solutions. The company also presented some selected coating systems starting with cost effective, moisture tolerant coloured hybrid coatings.

Allen Engineering demonstrated the ability and performance of its ride-on trowels.

Face Construction Technologies showed how to measure the floor (after it is completed) with a Dipstick floor profiler. High-quality floors are normally measured to determine whether they meet the contractual flatness and levelness requirements.

Other supporters that were also present included Zacklim Flat Floor Specialist, which has extensive experience in high quality flooring and is well known in Malaysia and other parts of Asia; and Somero Enterprises, a manufacturer of laser-guided and technologically innovative machinery used in horizontal concrete placement, to advance the productivity, concrete flatness, levelness and efficiency of the jobsite programme. ■

Website: [www.concretefloorsasia.com](http://www.concretefloorsasia.com)



Top, middle, above and left: Scenes from CFA's second Mega Demo, which was held at the INSEE Technical Services Centre in Pathumthani, Thailand.



Husqvarna®

### Free Gift Campaign

Send your personal info & contact to us at [sales.asia@husqvarna.cn](mailto:sales.asia@husqvarna.cn) and you will receive a gift from us!



## Leave the weights at the gym.

Husqvarna WS 220 is our new, lightweight electric wall saw. Unbeatably efficient for smaller mid-sized jobs as well as repeated jobs with cutting depth up to 390 mm. Easy to use and transport with the included trolley. The sawhead delivers a full 6 kW on the shaft but weighs only 19 kg. And it's so flexible that you can even run it on 1-phase, if needed. Want to know more? Visit our website or your nearest Husqvarna contact.



#### CONTACT LOCAL DEALER

- |                      |                                   |                     |                   |                                  |                    |
|----------------------|-----------------------------------|---------------------|-------------------|----------------------------------|--------------------|
| • <b>Hong Kong</b>   | OWP (Hong Kong) Co.               | (852) 2877 3131     | • <b>India</b>    | Prime Technologies               | (91) 11 9811730146 |
| • <b>Indonesia</b>   | PT. Bina Berkat Sentosa           | (62) 21 56944199    | • <b>Korea</b>    | Kyung Jin International Ltd      | (82) 2 2238 2187   |
| • <b>Singapore</b>   | Husqvarna Far East Co. Ltd        | (86) 592 6518 940   | • <b>Taiwan</b>   | Husqvarna Far East Co. Ltd       | (86) 592 6518 940  |
| • <b>Thailand</b>    | Power Cut Co.,Ltd                 | (66) 2585 1410 to 1 | • <b>Vietnam</b>  | Husqvarna Far East Co. Ltd       | (86) 592 6518 940  |
| • <b>Philippines</b> | Cut & Break Diamond Products, Inc | (632) 664 5883      | • <b>Malaysia</b> | Defix Concrete Products Sdn Bhd. | (603) 91348600     |

### HUSQVARNA CONSTRUCTION PRODUCTS

38, XIN JIA ROAD, COLLIMAN IND. PARK, HAICANG XIN YANG INDUSTRIAL DISTRICT, 361022 XIAMEN, FUJIAN PROVINCE, CHINA

[sales.asia@husqvarna.cn](mailto:sales.asia@husqvarna.cn)

[www.husqvarnacp.com](http://www.husqvarnacp.com)

Copyright©2014 Husqvarna AB (publ). All rights reserved

# APEX 2014 set to break record for exhibitor numbers and space

The eighth APEX aerial platform exhibition is set to break records for exhibitor numbers and space when it opens from 24 to 26 June this year, at the Amsterdam RAI Exhibition Centre in the Netherlands. It will feature an 11,000 sq m exhibition area inside – marking a substantial increase from the last edition and a 10,000 sq m outside area – almost double the size of the outside area at the last APEX show, held at MECC Maastricht in 2011.

According to the organiser, Industrial Promotions International (IPI), more than 100 exhibitors from all over the world, including China, have already confirmed their stand space and will demonstrate their products and services in a live environment.

The three-day event serves as an important platform for networking, knowledge sharing, and ultimately shaping the industry's future. Visitors from all over the world will have an opportunity to discuss and share their views on timely industry topics and trends, exchange expertise and experience, view state-of-the-art technology and innovation, and stimulate further research of technical and business activities.

“We can already say that APEX 2014 will be the biggest international access industry fair anywhere in the world,” said Tony Kenter, managing director of IPI. “Amsterdam is becoming the new capital of the access industry, and is the perfect international setting with cosmopolitan flair. APEX is the showcase for all companies in the international access business, and will be the world's largest ever access exhibition in 2014 – the figures clearly show APEX is the ‘leading fair’ for this industry. Whatever visitors will be looking for, they will find it at APEX.”

All previous seven shows – the first was in 1996 – have been held in Maastricht in mid-September. The new June dates mean that the show will be held well before the onset of summer holidays. In addition, the switch to June will allow APEX to be held concurrently with the International Rental Exhibition (IRE) and the European Rental Association (ERA) annual convention.



Above: The last edition of APEX in 2011 took place at the MECC Maastricht.

Left: The Amsterdam RAI Exhibition Centre will be the new venue for APEX.

IPI said some of APEX exhibitors will include Genie, Manitou, JLG, Comet, Skyjack, Holland Lift, MEC, Sorage, Riwal, Easy Lift, Imer, Merlo, Teupen, TVH, ATN, Ruthmann/Time International, Bronto, Palfinger, Multitel Pagliero, CMC, Dinolift and Omme Lift/Kors, among others. ■

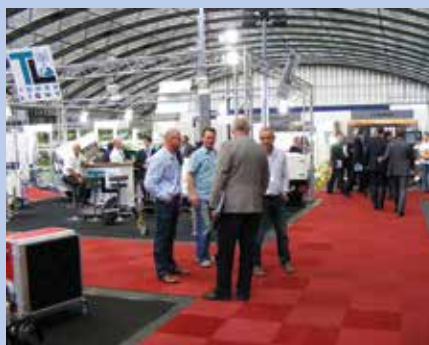
Website: [www.apexshow.com](http://www.apexshow.com)

## IRE joins APEX

The third International Rental Exhibition (IRE) will return to Amsterdam in June 2014, to be held alongside APEX, creating a ‘one stop shop’ event for rental companies. IRE will take place in Hall 2 and APEX in Hall 1. There is also an outside area for APEX at the square in front of the RAI Centre.

IRE will again have the support of the European Rental Association (ERA), which will be holding its annual convention during the exhibition. The convention attracts as many as 350 delegates, many of whom are senior figures at major European rental companies. The European Rental Awards dinner will also take place during IRE.

IRE exhibitors will include global companies and small local suppliers of construction equipment and tools as well as suppliers of specialist services to



Scene from IRE 2011.

the rental sector such as software and asset tracking technology. Equipment on show will include power tools, lighting towers, compressors, generators, skid steer loaders and mini excavators.

According to IPI, Volvo Construction Equipment and Kubota have confirmed

their attendance at the IRE show. The two companies - both of which are major suppliers to the rental sector worldwide - are among a number of companies that have recently signed up for the show, including Hitachi Construction Machinery Europe (HCME), Wacker Neuson and Thermobile. Other confirmed exhibitors are said to include Hilti, Kaeser, Terex Compact, Thwaites Dumpers, Yanmar Construction Equipment, Himoinsa, Husqvarna and Towerlight.

Michel Petitjean, ERA secretary general, said the IRE show will allow purchase managers of rental companies to discover products customised for rental, and get to know innovative suppliers of all sizes which they may not be familiar with. ■

Website: [www.ireshow.com](http://www.ireshow.com)

# SENNEBOGEN

80 t

40 t

16 t

70 t

## 673E

### Best Flexibility - Telescopic Crawler Cranes Clever investment - long-term savings

- Lifting capacity up to 70 t, max. 36 m boom plus 15 m jib boom
- Ready to use in no time, easy to transport
- Optimum for lifting, transporting and positioning heavy loads
- Service-friendly and controllable technology

SENNEBOGEN Pte. Ltd., 25 International Business Park  
# 03-70/71 German Centre, 60 99 16 Singapore

Phone +65 6562 826-9

GO FOR GREEN

www.sennebogen.com

20 years of expertise  
Telescopic Crawler Cranes  
since 1992

## IPAF expands in SE Asia

IPAF is investing resources in Southeast Asia to support its rapidly growing membership in the region, where IPAF has members across China, Hong Kong, India, Indonesia, South Korea, Malaysia, Singapore, Taiwan and Thailand. IPAF-approved training centres in Southeast Asia posted impressive growth of 211.3 percent in training activities in 2013.

As part of its investment in Southeast Asia, IPAF has appointed Evelyn Low Soo Chian as regional manager, who will assist Raymond Wat, based in Singapore. Ms Low will focus on organising IPAF's presence at exhibitions, seminars and shows in the region, at the same time recruiting new members and providing support to members and training centres. She previously worked at a Singapore rental company for seven years, in roles from customer service officer to assistant manager. She was in charge of developing marketing for the company, supervising the sales team, participating in and organising company events and exhibitions, and supervising the sales team in overseas markets.

"IPAF members in Southeast Asia are influencing governments and safety authorities in the region," said IPAF CEO Tim Whiteman. "We call on rental companies and manufacturers to join IPAF and work to keep our industry safe."

IPAF South East Asia will be present at several events this year including OS+H Asia (7 - 9 May 2014), Singapore; IPAF Asia Conference (9 May 2014), Singapore; BuildTechYangon, (22 - 24 May 2014), Yangon, Myanmar; OneBuild (16 - 19 July 2014), Kuala Lumpur, Malaysia; BuildTechAsia (15 - 17 October 2014), Singapore; and Bauma China (25 - 28 November 2014), Shanghai, China. ■



The first IPAF Asia Platform Showcase took place in 2013 in Singapore.

## Research on Chinese rental market

Latest results from IPAF's annual rental market research indicate that the US aerial work platform (AWP) rental market is rebounding with stellar growth of around 10 percent in 2013. IPAF's 2014 Powered Access Rental Market Reports reveal that the European market remains stable, although marked by stark differences across different countries.

For the first time, IPAF has commissioned research into the Chinese market. With a low number of machines, China has been a fast growing market since 2009, with 15 to 20 percent market growth. This growth is expected to continue at a similar pace in the next three to five years. Most AWP's in the Chinese rental market are locally manufactured. There are no more than 100 rental companies in China; a few major generalist rental companies dominate the market. Scissors represent by far the largest share of the market due to their size, flexibility and lower price.

The IPAF US and European Powered Access Rental Market Reports 2014 can be purchased at [www.ipaf.org/reports](http://www.ipaf.org/reports) ■

## Committed to continuous learning

More than 640 instructors and training centre staff attended IPAF Professional Development Seminars (PDS) across 17 countries in eight languages in the last few months. The PDS is the annual event for IPAF certified instructors and ensures that they remain up-to-date with legislation and training. Through attending the event, instructors gain Continuing Professional Development (CPD) points, necessary to maintain their IPAF instructor status. This commitment to continuous learning is one of the unique features of the IPAF training programme. ■



A workshop session at the UK PDS, where a total of 216 instructors attended.

## 500,000 PAL cards worldwide

There are now half a million valid PAL Cards (Powered Access Licences) worldwide, marking the success of IPAF's voluntary, industry-led operator training programme in keeping the use of powered access equipment safe. "This is a tremendous success for IPAF members," said IPAF CEO Tim Whiteman. "Our members created and launched the platform operator training programme

in 1991, not because the law mandated it, but because they had a vision of a safe and professional industry. IPAF manages the programme on behalf of its members and the income is re-invested in the training programme and other safety initiatives, such as the Clunk Click harness campaign, the spreader pads campaign, or the accident reporting project." ■

GO WHERE NO BOOM  
HAS GONE BEFORE

WITH CONFIDENCE AT 185FT

**INTRODUCING THE WORLD'S TALLEST SELF-PROPELLED BOOM LIFT.** The new 1850SJ has more reach, better stability and a larger work envelope than any lift in its class. Get up to 19 stories of working height and an innovative chassis that can be extended front and back. Featuring 1,000 lb/500 lb platform capacity, the 1850SJ is the most powerful boom in the industry. Transport with ease in a regular size trailer — no oversized load permit needed. Learn more at [www.jlg.com/1850SJ](http://www.jlg.com/1850SJ)

[www.jlg.com](http://www.jlg.com)

**South East Asia Office**  
Oshkosh-JLG (S) Technology Equipment Pte Ltd  
29 Tuas Avenue 4, Singapore 639379  
Phone: +65 6591 9030  
Fax: +65 6591 9031

**India Office**  
Oshkosh India Private Limited  
Unit 1&3, Grand Plaza, The Grand  
Nelson Mandela Road, Vasant Kunj  
New Delhi - 110 070  
India  
Tel: +91 11 4289 0407  
Cell: +91 9911110762

**JLG**<sup>®</sup>  
*reachingout*<sup>™</sup>

## Tsurumi adds new models to GPN series sand pumps

To meet the needs of achieving higher pumping head and higher capacity, Tsurumi has introduced two new models of GPN series sand pumps, GPN415 and GPN622.

The GPN415 features a motor output of 15 kW, maximum capacity of 4.1 cu m/min, discharge bore of 100 mm and maximum head of 21.6 m. The GPN622 has a motor output of 22 kW, with a maximum capacity of 5 cu m/min, discharge bore of 150 mm and maximum head of 30 m. Both models are fitted with a 10 m cable.

The Tsurumi GPN series is a submersible, three-phase, high-power, extra heavy-duty slurry pump driven by a four-pole motor. It features a high chromium cast iron agitator mounted on the shaft end, which facilitates efficient suction of the settled slurry, sand or mud in various applications, including civil engineering, mining and quarry, to name a few. The other parts subject to wear, like impeller and suction plate, are also made of high chromium cast iron that has excellent durability.

The motor shaft is made of SCM435 (JIS), chromium molybdenum steel. This material has the characteristics of not only hard but also very tough (tensile strength of 930 N/sq mm and over), and it has the superior performance against a shock that is required at the instant of sucking hard foreign matters.

In addition, the GPN series' side discharge features a spiral design, which allows smoother passage of the sucked solid matters. A cooling water jacket ensures efficient motor cooling, even when the motor is exposed in air during operation.

There is also an option for guide rail fitting system, which improves convenience in facilities such as iron works, ready-mixed concrete plants and wastewater treatment plants, where the pump is to be installed with a fixed discharge piping. The guide rail fitting system connects the pump to and from the piping easily just by lowering or hoisting the pump, allowing easy maintenance and inspection without the need to enter the sump.

The Tsurumi GPN series sand pump has been on the market for many years. According to the company, the existing GPN models, GPN3-80 (5.5 kW) and GPN3-100 (11 kW), will be renamed to GPN35.5 and GPN411 respectively. All the specifications will remain unchanged except for the model names. ■

*Enquiry: sales@tsurumipump.com.sg*



Left: The GPN415 features a motor output of 15 kW, maximum capacity of 4.1 cu m/min, discharge bore of 100 mm and maximum head of 21.6 m.

Below: The GPN622 has a motor output of 22 kW, with a maximum capacity of 5 cu m/min, discharge bore of 150 mm and maximum head of 30 m.



Above: The optional guide rail fitting system improves convenience in facilities where the pump is to be installed with a fixed discharge piping.



# DNA MATTERS.



**When it comes to diversification, nothing beats good genes.**

Having mastered the bulldozer, which stands at the top of the construction machinery food chain in terms of sophistry, we seamlessly developed an entire line of earthmoving, road, concrete handling, public utility and other machines that are now following in the tracks of our world leading bulldozers. Our rise to become the No. 1 bulldozer maker and seller in the world was no accident of nature. It is the result of persistent product development and machines that have proven to have high performance at a great price. It's what we call VALUE THAT WORKS. Hard. Long. Efficiently.

The Shantui brand now sells in more than 150 countries and regions round the globe.

Contact your local Shantui dealer today to discover more about our entire product family and our worldwide "Anytime, Anywhere Service" guarantee.

**SHANTUI**  
VALUE THAT WORKS

**Shantui (Singapore) PTE Ltd.**

Add: 18 Tuas Loop, Singapore 637349

Tel: +65-6863-2567 Hp: +65-8437-7222 Email: [kj@shantui.com](mailto:kj@shantui.com)

[www.shantui.com](http://www.shantui.com)



## Link-Belt unveils powerful TCC-500 crawler crane

Link-Belt's new 51 mt TCC-500 telescopic crawler crane features a four-section, full-power boom that is 10.8 - 33.8 m in length, with box type construction of high tensile steel consisting of one base section and three telescoping sections. The vertical side plates of the boom have diamond-shaped steel impressions for strength to weight ratio. Fly options include an 8.7 - 15.6 m two piece bi-fold lattice fly, stowable, offsettable to 2, 20 and 40 degrees; maximum tip height is 50.44 m.

The TCC-500 can move quickly and easily on or off the jobsite. With a standard counterweight package of 11,339.8 kg, the crane transports in just one load while staying under 45,359.2 kg in most cases. On the trailer, the crane travels at a height of 3.01 m and a width of 3.49 m.

For flexibility on the jobsite, a hydraulic cylinder mounted in the lower frame can hydraulically extend and retract all welded, precision machined, steel frames. The TCC-500 can work at three different track widths: 4.63 m fully extended, 4.12 m intermediate, and 3.49 m retracted. It has two travel speeds and can travel up to 3.2 kph to spend less time travelling and more time lifting.

A Tier IV final Cummins QSL engine powers the TCC-500, producing 215 hp and driving a variable displacement piston pump package. Simple and dependable hydraulic pilot-operated control valves distribute flow to all functions. The pump arrangement is designed to provide positive, precise control with independent or simultaneous operation of all crane functions. Tried and tested Link-Belt hoist packages using piston motors and 16 mm rope handle the flow of the crane. The winches have 7,749.2 kg of line pull and a maximum line speed of 167.3 m per minute. Owners will find the same winch-view and rearview cameras that come standard on the TCC-750 and TCC-1100 on the new TCC-500.

With the TCC-500 being an excellent general contractor crane or a solid addition to a rental fleet, its future moneymaking potential is huge, said Link-Belt. The TCC-500 has pole claw, earth auger and man basket attachments available, and the export version of the TCC-500 comes with a Tier III Cummins engine package. Smooth, powerful and easy to move, this crane will see work in tough environments as well as general lift duties.

Other standout features of the TCC-500 include the boom mounted 360 degree LED floodlight; swing audible and visual alert



The new Link-Belt TCC-500 is an excellent general contractor crane or a solid addition to a rental fleet, ideal for use in tough environments as well as for general lift duties. The TCC-500 has pole claw, earth auger and man basket attachments available, and the export version of the crane comes with a Tier III Cummins engine package.



The TCC-500 can move quickly and easily on or off the jobsite. With a standard counterweight package of 11,339.8 kg, the crane transports in just one load while staying under 45,359.2 kg in most cases. On the trailer, the crane travels at a height of 3.01 m and a width of 3.49 m.

alarm with swing stop system; wind speed indicator; drum rotational and directional indicators; upper guard rails; and supported 24/7 by Link-Belt Preferred including online manuals, literature, a ground bearing calculator and a 3D Lift Plan.

Link-Belt Construction Equipment Company, headquartered in Lexington, Kentucky, USA, is one of the leaders in the design and manufacture of telescopic boom and lattice boom cranes for the construction industry worldwide. ■