


SOUTHEAST ASIA

building

INCORPORATING ARCHITECTURE, INTERIOR DESIGN AND LANDSCAPING
Published since 1974

SEPT/OCT 2014



Scan this code &
'Like' us on 

ON THE COVER Tree House condominium in Singapore **ARCHITECTURE** Glass in the architecture of Arena Corinthians football stadium in Brazil & Greenhub factory in Singapore **INTERIOR** New look for MAX&Co. Showroom in Milan **LANDSCAPING** Fluidity & Crystal complete striking water feature at Egypt's Cairo Festival City **GOING GREEN** Green building projects around the world



clean

Colorbond®
ULTRA MATT

LYSAGHT

RELISH THE MATT SEASON

LYSAGHT® range of Low Gloss Roofing Solution is developed using BlueScope's new material Clean COLORBOND® ULTRA MATT steel.

Continuous innovation, our ongoing effort to address the Low Gloss demand which is a new trend in Singapore.



For information on low gloss roofing solution, contact us at:

NS BlueScope Lysaght Singapore Pte Ltd

18 Benoi Sector, Jurong Town, Singapore 629851

Fax: +65 6265 0951

Email: SGsupport@bluescopesteel.com

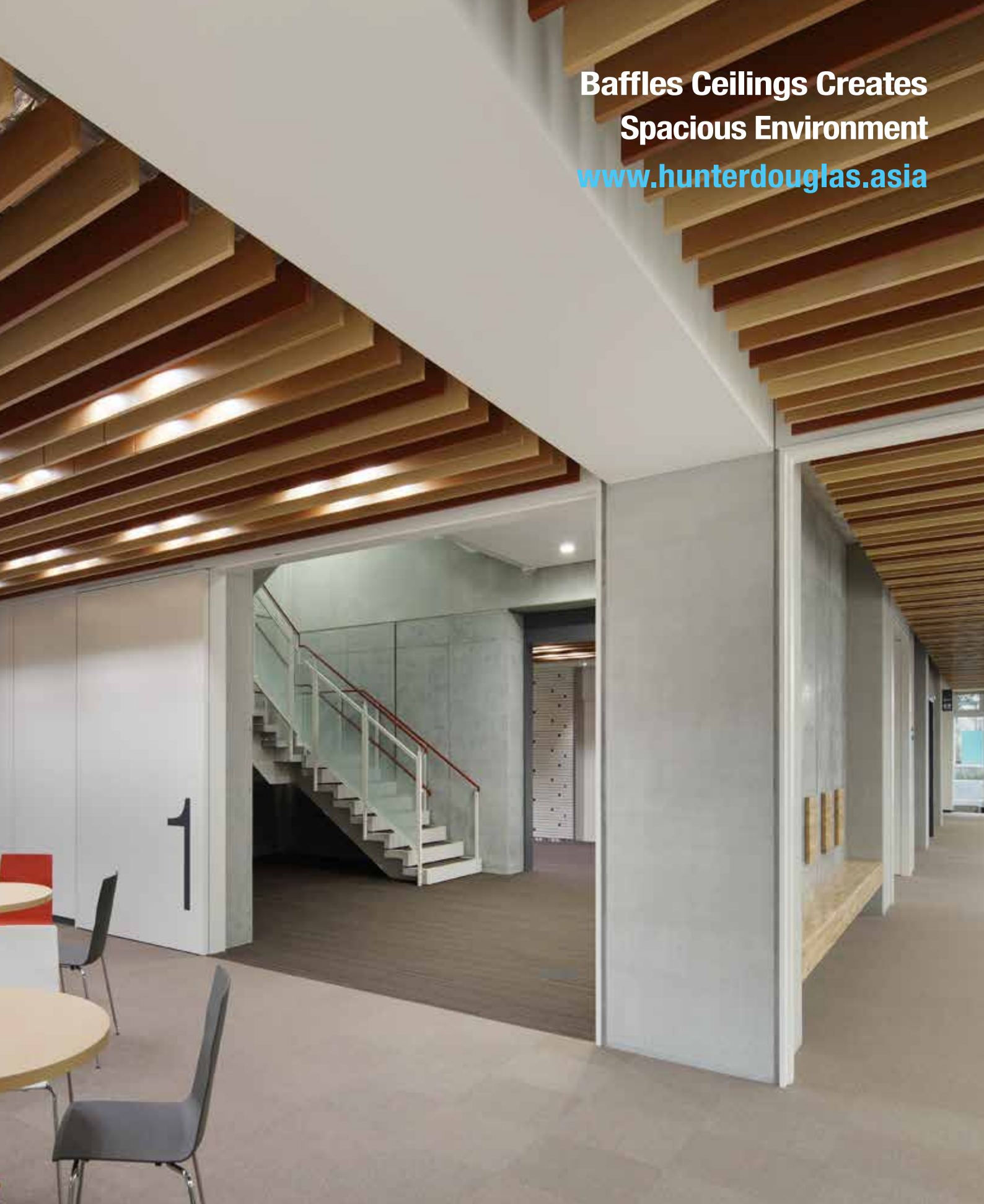
www.lysaght.com.sg

+65 6264 1577



This artwork design is developed for advertising and graphical display purpose, please contact the Sales & Marketing representatives for project enquiries and actual product samples. Terms & Conditions apply.

**Baffles Ceilings Creates
Spacious Environment**
www.hunterdouglas.asia



PRECISION
ENGINEERING



ZERO
WASTE

HunterDouglas

guangzhou international lighting exhibition

广州国际照明展览会

20th

**The most influential and comprehensive lighting
and LED event in Asia**

9 – 12 June 2015

China Import and Export Fair Complex
Guangzhou, China

www.light.messefrankfurt.com.cn



Contact
Messe Frankfurt (HK) Ltd
Tel: +852 2238 9969
Fax: +852 2598 8771
light@china.messefrankfurt.com
www.light.messefrankfurt.com.cn



FACT

Timber is the **most eco-friendly material that can be re-grown perpetually**, involving only soil, water and sunlight.

FACT

You can easily get supplies of **Malaysian timbers** from **sustainably managed forests**, accredited by globally recognised bodies.

Malaysian Balau and Merbau glued laminated timbers at Park Hyatt Hadahaa, Maldives.

Talk to us for everything you need to know about Malaysian timbers and get your **FREE COPY** of the newly published **MALAYSIAN HARDWOOD GUIDE!**


MALAYSIAN TIMBER COUNCIL

18th Floor, Menara PGRM,
No. 8, Jalan Pudu Ulu, Cheras
56100 Kuala Lumpur
T +60 3 9281 1999
F +60 3 9282 8999



council@mtc.com.my www.mtc.com.my

contents

sept - oct 2014

Features

Architecture – Glass in Architecture

- 46** AGC was the sole-source supplier of all glass components for the construction of Arena Corinthians, the glass-studded stadium which hosted the opening match of the 2014 FIFA World Cup Brazil™
- 48** Singapore Safety Glass Pte Ltd (SSG) supplied its newest offering, a dual-action eco-active glass dubbed Self-Cleaning VariShield to Greenhub in Singapore

Interior – Retail

- 50** In the showroom of Milan MAX&Co. boutique in Milan, new wooden floors were laid and finished with Mapei products

Landscaping – Water Features

- 54** Fluidity and Crystal completed a spectacular water feature at Egypt's Cairo Festival City

Architecture – Application Feature

- 56** Sika scores Singapore Sports Hub project
- 58** In the new Gurmels gym, the Webnet by Jakob AG covers the ceiling

Going Green – Green Building Projects

- 60** Sustainable building projects from Singapore and around the world

Regulars

News

- 8** News from Asia Pacific / Middle East & the World

Events Calendar

- 44** Guide to international trade shows, expos & fairs

Product Showcase

- 100** Mixed Category
- 102** New on the Market
- 104** Eco-friendly building materials / products / technology



On the Cover: Tree House condominium in Singapore. Photo: © City Developments Limited

Cover design by Fawzeeah Yamin



GCC Sliding And Stacking Wall System



GCC Sliding And Folding Wall System

The three core principles of **GCC** are to provide **good quality, creditable and consideration products and services** to our customers since its establishment.

GCC has dedicated huge efforts in glass hardware and system development since 1981. **GCC** also provides variety of great solutions for users to create wide, fresh, and comfortable spaces. The product range cover from houses, office buildings, restaurants, hotels to department stores, etc.

Space planning is always a key point that designers and users focus on. To better serve user's expectation and the market trend, **GCC** launches "**Heavy Duty Sliding And Stacking Wall System**" and "**Sliding And Folding Wall System**". There are two major features of these two creative systems. First of all, it does not require to drill through glass and no need to use AB glue on glass. These two features offer more convenient operability to users and significantly cut down the installation time. Moreover, it does not require floor guide anymore, and it keeps the floor flawlessly from washing and dust and maintains simple and neat partition system. In addition, **GCC** offers anti-UV PVC seal, weather resisted rubber seal and weather brush to keep mosquitoes and insects away. All these options allows customer to flexible apply **GCC's** products in different conditions.

To provide great living experiences to customers, **GCC** has its QC team to oversee the product with high-standard, and never compromise product quality, safety and endurances of market price competition. **GCC** develops its unique designs and holds patents in many countries. Quality assurance is always the top priority for **GCC** and we hope thorough our effort we can see application for glass hardware and systems in numerous spaces.

Looking forward, **GCC** will continue to devote its effort in developing more user-friendly systems to offer more effortless solutions, and most importantly to provide better living experiences to users.



GT-10
Bottom Patch Fitting



GL-34R
Corner Lock



GTS-650
Floor Spring



ODC-680
Door Closer



LL-20
Lever Lock



GOOD CREDIT CORPORATION

No.13, Longmen Rd., Situn Dist., Taichung 40757, Taiwan

E-mail: gcctw@ms7.hinet.net

TEL: 886-4-22583755(Hunting Line) FAX: 886-4-22583753

For more information please visit <http://www.gccintw.com.tw>

follow us



editor's note



Hello readers and thanks for picking up a copy of the September/October issue, which is also our annual green issue. If you are looking to learn about some truly inspirational sustainable projects, then look no further than this issue.

From Asia to Europe, green buildings are quickly mushrooming in all corners of the world. Developers are showing a strong message that when they launch a new project, quality and sustainability are critical considerations in their plans.

For this issue, we have sourced a wide variety of projects to show how green design practices and building products have contributed to a more sustainable built environment. You can find these articles in the section labeled "Going Green".

In the other sections of the magazine, we have a theme on glass in architecture where we feature the Arena Corinthians football stadium in Sao Paulo in Brazil and the Greenhub factory in Singapore. Both projects show how architectural glass can combine the aesthetic with the functional.

In interior design, we look at a retail project in Italy. The MAX&Co. Showroom in Milan was completed renovated and included the laying of wooden flooring using products from the Mapei range.

For the theme on water features, we showcase a project by Crystal. Fluidity and Crystal completed a spectacular water feature at Egypt's Cairo Festival City. The animated fountain at Cairo Festival City puts on stunning theatrical shows of water and light, which can be programmed with music to entertain the public. Don't miss this interesting read.

Plus, we have a green product showcase featuring a wide array of eco-friendly and recyclable interior products, designed to help architects and specifiers achieve a more sustainable home or office.

We hope you enjoy reading this issue as much as we enjoyed putting it together.

Amita Natverlal

Disclaimer

All advertisers and contributors must ensure all promotional material and editorial information submitted for all our publications, must be free from any infringement on patent rights and copyrights laws in every jurisdiction. Failure of which, they must be fully liable and accountable for all legal consequences (if any) that may arise.

The Editor reserves the right to omit, amend or alter any press release submitted for publication. The publisher and the editor are unable to accept any liability for errors or omissions that may occur, although every effort has been taken to ensure that all information is correct at the time of going to press. No portion of this publication may be reproduced in whole or part without the written permission of the publisher.

South East Asia Building is available free-of-charge to applicants in the building industry who meet the publication's terms of control. For applicants who do not

qualify for free subscription, copies will be made available, subject to acceptance by the publisher, for a subscription fee, which varies according to the country of residence in the following manner:

Annual Subscription

Airmail: America/Europe – S\$150, Japan, Australia, New Zealand – S\$150, Asia – S\$120, Brunei – S\$80, Malaysia – S\$80

Surface mail: Singapore – S\$40

(Incl 7% GST Reg No.: M2-0108708-2)

Printed in Singapore by KHL Printing Co Pte Ltd
MCI (P) 123/07/2014 KDN No: 1560 (1270) - (6)
ISSN 2345-7066 (Print) and ISSN 2345-7074 (E-periodical)

Trade Link Media Pte Ltd also publishes:

- Bathroom + Kitchen Today
- Lighting Audio Visual Asia
- Lighting Today
- Security Solutions Today
- Southeast Asia Construction

PUBLISHER

Steven Ooi (steven.ooi@tradelinkmedia.com.sg)

EDITOR

Amita Natverlal (seab@tradelinkmedia.com.sg)

GROUP MARKETING MANAGER

Eric Ooi (eric.ooi@tradelinkmedia.com.sg)

MARKETING MANAGER

Felix Ooi (felix.ooi@tradelinkmedia.com.sg)

MARKETING EXECUTIVE

Chua Jie-e (jieee.chua@tradelinkmedia.com.sg)

HEAD OF GRAPHIC DEPT/ADVERTISEM

CO-ORDINATOR

Fawzeeah Yamin (fawzeeah@tradelinkmedia.com.sg)

GRAPHIC DESIGNER

Siti Nur Aishah (siti@tradelinkmedia.com.sg)

CIRCULATION

Yvonne Ooi (yvonne.ooi@tradelinkmedia.com.sg)

Southeast Asia Building is proud to
be a media partner of:



Vietnam Green
Building Council



Emirates Green
Building Council



Bangladesh Green
Building Council



Green Building
Council Indonesia



Philippine Green
Building Council



Green Building
Council Mauritius



Green Building
Council Italia



Spain Green
Building Council®

SOUTHEAST ASIA BUILDING is published bi-monthly by:

**Trade Link Media Pte Ltd, 101 Lorong 23, Geylang,
#06-04, Prosper House, Singapore 388399**

Tel: +65 6842-2580 Fax: +65 6842 2581

Editorial e-mail: seab@tradelinkmedia.com.sg

Website: www.tradelinkmedia.com.sg

RCB Reg No: 199 204 277K

China and Hong Kong Media Rep

Ms. Judy Wang

General Manager

Worldwide Focus Media Co., Ltd

Unit 04, 7/F Brightway Tower

No. 33 Mong Kok Road

Kowloon

Hong Kong

Phone: +852 3078 0826

Mobile : +86 13810325171

Email: judy@worldwidefocus.hk

IFM C 2014

INTERNATIONAL FACILITY MANAGEMENT
CONFERENCE 2014

THOUGHT LEADERSHIP IN FACILITY & WORKPLACE MANAGEMENT

IN CONJUNCTION WITH

iFAME INTERNATIONAL FACILITY
MANAGEMENT EXPO 2014

The 2nd International Facility Management Equipment, Products, Technology & Services Exhibition

MARINA BAY SANDS, SINGAPORE

29 SEPT - 1 OCT 2014

WWW.IFAME.COM.SG

At International Facility Management Expo 2014, explore a showcase of relevant products, technologies and services in facility management. Don't miss out on this opportunity to network with professionals who want to further their knowledge of their discipline and build contacts within the industry as well!

EXHIBIT AT IFAME 2014 TODAY TO:

- ✓ Expand your business network and explore new opportunities!
- ✓ Stay updated on industry trends and developments!
- ✓ Maximise your marketing and publicity efforts - stretch your advertising dollar with iFAME 2014's extensive advertising campaign!

2014
Event Projections

8,000sqm
gross exhibition
area

270
exhibitors

7,000
trade professionals

TO EXHIBIT, CONTACT:
iFAME@cems.com.sg
Tel: +65 6278 8666
Fax: +65 6278 4077

ORGANISER



HOST



STRATEGIC PARTNER



CONCURRENT EVENTS



LED+LIGHT ASIA 2014

STAS MEMBER ASSOCIATIONS



Air-Conditioning and Refrigeration
Association of Singapore



Micro Builders
Association, Singapore



Security Systems
Association of Singapore



Singapore Building Materials
Suppliers Association



Singapore Electrical Contractors and
Licensed Electrical Workers Association



Singapore Electrical
Trades Association



Singapore Furniture
Industries Council



Singapore Glass
Association



Singapore Plumbing
Society



Singapore Sanitary Ware
Importers & Exporters Association



The Singapore Lift & Escalator
Contractors & Manufacturers Association

Interface becomes the first global carpet tile manufacturer to recycle carpet tiles in Asia

Singapore – Interface, a worldwide leader in the design and manufacture of carpet tiles, becomes the first global manufacturer to offer customers carpet tile recycling in Asia, said the company.

Strategic partnerships ensure that carpet tiles suitable for recycling are diverted from landfill, allowing customers to recycle within the region. The announcement of a fully localised ReEntry™ programme is yet another key milestone in Interface's journey towards its Mission Zero® goal – a commitment to eliminate any negative impact it may have on the environment by the year 2020.

In 2007 Interface, Inc., in Atlanta USA, became the first carpet tile manufacturer to implement a process for the "clean separation" of carpet fibre from backing, allowing for a maximum amount of post-consumer material to be recycled into new products with minimal contamination. In efforts aimed at reducing overall environmental impact, Interface continuously source recycled content for its products regionally, and has been looking for alternatives to recycling regionally as well.

In 2013, just two years after opening its manufacturing base in China, Interface created an exciting industry first by announcing the launch of ReEntry in China, enabling Interface to become the first global carpet tile manufacturer in Asia to offer its customers recycling in Asia. The company is currently well down the road to develop a similar recycling facility for its manufacturing plant in Chonburi, Thailand, following extensive work with local partners there.

At the recycling plant in China, operated by Interface strategic partner, used carpet is received and those tiles that are not made by Interface are tested for recycling suitability. In the recycling process the yarn is separated from the vinyl backing and cleaned yarn is then sent to the yarn manufacturer for recycling into new yarn. Yarn with high levels of impurity, also known as "fluffy" yarn, is sent to the engineering and plastic materials industry for downcycling into new material. The recycling process also



Interface recycles yarn to yarn and backing to backing, ensuring carpet tiles are part of a closed loop system where the separated nylon yarn feeds into new products. Photo: © Interface

includes turning the old backing into new backing. By processing the backing into crumbs and then combining it with Interface's fibreglass sheets in the calendaring process, old backing is turned into new GlasBac™RE backing.

"Interface Chairman and CEO Dan Hendrix stated: "China is obviously a key growth market for Interface and as the global leader in modular carpet, we are committed to blending innovation and the best ideas from China and around the world. The launch of ReEntry in China is a true landmark for Interface because it is a further step towards the realisation of our global aim to attain Mission Zero, and it also reinforces our belief that ground-breaking solutions can be achieved through truly 'glocal' partnerships."

Interface is a longstanding environmental pioneer, and is also working closely with fibre suppliers to continually reduce the virgin content in the nylons purchased. This has resulted in new and innovative technologies that significantly increase the recycled content of Interface products; currently reaching a total recycled content of up to 85 percent, including 100 percent recycled content Type 6 Nylon.



Interface recycles carpet tiles in a composite process that fully separates the backing, enabling yarn to be recycled into new yarn. Photo: © Interface



In Interface's recycling process the old backing is turned into pellets that then goes into the process of making GlasBac™RE backings. Photo: © Interface

Contact the Flooring Specialist:

+60 3 6277 9575

asia@flowcrete.com

ENVIRONMENTALLY SUSTAINABLE, COLOURFUL CAR PARK COATINGS...

Flowcrete Asia understands that the car park is often the first point of contact for the customer, and first impressions count. Choose Flowcrete's Deckshield systems for robust, attractive, sustainable flooring solutions that stand the test of time and will not fail to impress.



APPLICATION SUITABILITY

- ✓ Internal Decks
- ✓ Exposed Decks
- ✓ Ramps
- ✓ Turning Circles
- ✓ Demarcation
- ✓ Kerbs / Islands

*Applies to Deckshield ID, Deckcoat EP and Deckcoat EPW systems.

Subscribe to the
Resin Flooring Blog
blog.flowcrete.com

Read our Car Park
Deck Whitepapers
www.flowcreteasia.com/wp

Call for a Free
Flooring Consultation
+60 3 6277 9575

JUNG Asia opens new Indonesian office to meet the growing property market

Singapore – JUNG Asia Pte Ltd, a direct subsidiary of Albrecht Jung GmbH & Co. KG – one of the biggest German manufacturers of electrical installation devices and systems, announced the opening of its new office in Indonesia on 10 June 2014. Located in Prudential Tower, Kasablanka City in Jakarta, JUNG Indonesia is poised to meet the requirements of the country's growing property market.

"We are excited with the opening of JUNG in Indonesia. The location is in the prestige area of Jakarta where it will be closer and more accessible for our customers," said Purwanto Hasyim, Country Manager, JUNG Indonesia. "This move by JUNG supports our strategy of increasing brand awareness and expanding our reach in the country," he added.

JUNG products have been widely used in high-end hotels, residential, apartments, and buildings in Indonesia including Bulgari Hotels & Resorts Bali, Hotel Mulia Senayan, Real Estate Alam Sutera Tangerang, Jakarta Bona Beautiful Gardens, Pakubuwono Residence Jakarta, Simpruk Terrace Condominium, BBD Tower Surabaya, and BNI 46 Building, Jakarta.

"Indonesia has been a strong market for JUNG in Asia and the new office will help extend our operations to assist our customers in terms of sales and support," said Clement Koh, General Manager, JUNG Asia Pte Ltd. "It also further strengthens our presence in Asia Pacific adding to our other regional offices that are located in China, Hong Kong, Korea, Malaysia, Taiwan, Thailand, and now, Indonesia," he added.

"JUNG has its own subsidiaries and is represented by a number of agencies all over the world. Our success in the industry is based on teamwork and innovative strength. Our high-quality products are manufactured in Germany and are distributed worldwide," said Jörg Thormann, Export Area Manager, A. JUNG GmbH and Co. KG.

JUNG Indonesia operations will be supervised directly by JUNG Asia Pte Ltd based in Singapore. The regional hub oversees JUNG operations in Asia Pacific with fully integrated sales, marketing, training, support and logistic capabilities. JUNG Asia's staff in the region is 72-man strong with a team of proficient engineers in each office. JUNG also has a 4,000 square feet in size warehouse hub in Asia in Singapore.



JUNG executives graced the opening of JUNG Indonesia. From left to right: Purwanto Hasyim, Country Manager, JUNG Indonesia, Jörg Thormann, Export Area Manager, A. JUNG GmbH and Co. KG., and Clement Koh, General Manager, JUNG Asia Pte Ltd.

Phoenix Solar Pte Ltd consolidates position in Singapore with another MW-scale solar rooftop project

Singapore – Phoenix Solar Pte Ltd ("Phoenix Solar") has signed a contract with Katoen Natie Singapore (Jurong) Pte Ltd ("KNS") for the construction of a rooftop solar PV system on Jurong Island, Singapore with a capacity of 1.188MWp. KNS is a subsidiary of the Belgium headquartered global supplier of logistics and distribution services Katoen Natie. They are not new to solar energy. Katoen Natie owns Belgium's largest rooftop PV system - a 24.1MWp power plant located at the Loghiddien City terminal, Antwerp. The currently installed capacity of rooftop PV at Katoen Natie premises totals approximately 48 MWp. With this new installation in Singapore, they are extending their green energy portfolio to Asia. The PV system will be installed on one of KNS's warehouses located at Jurong island. Upon completion 4,752 REC crystalline solar modules and 51 SMA string inverters will generate approximately 1,500 megawatt hours of solar electricity per year. This will mitigate around 750 metric tonnes of CO₂ per year from gas-fired power plants.

"We saw in Phoenix Solar an excellent partner for this project. As an international EPC with a solid base in Asia, they were able to offer, strong technical know-how, local regulatory expertise and high quality components - like REC modules and SMA inverters - to maximise the returns on our PV investment," said Koen Cardon, Chief Executive Officer of KNS.

With over 80MW of projects in the region, including Singapore's largest PV installation at Sheng Siong's HQ in Mandai, and the recently commissioned 707kWp PV system at Singapore's Sports Hub, Phoenix Solar is a recognised installer of high quality investment grade PV solutions.

"Megawatt-scale rooftop PV systems are a great way for companies to stabilise their electricity expenses and save money. They offer very reliable investment returns with the added benefit of reducing carbon footprint," said Christophe Inglin, Managing Director of Phoenix Solar Pte Ltd.

playpoint



PLAYGROUND | WATERPLAY
INTERACTIVE PLAY | 3G FITNESS
SKATEPARK | STREET FURNITURE

Playpoint (Singapore) Pte Ltd
1 Sims Lane #04-02 Singapore 387355
Tel: (+65) 6398 1558 | Fax: (+65) 6398 1559
Email: info@playpoint.com.sg

www.playpoint.asia |  www.facebook.com/playpointasia

playpoint
imagination @ play

Singapore | Malaysia | Philippines | Vietnam | Indonesia



AN ASME-LIANHE ZAOBAO AWARD

新加坡金字品牌奖

Singapore
Prestige
Brand Award 13

Winner, SPBA - Established Brands

Atkins to pilot 'Eco-Low Carbon Urban Planning Methodology' in Chinese cities

Hong Kong – Atkins has been appointed by the UK Foreign and Commonwealth Office (FCO) to support the application of its recently launched 'Eco-Low Carbon (ELC) Urban Planning Methodology' in a number of pilot projects, as part of a one year follow on project from April 2013. Funded by the FCO Prosperity Fund, development of the methodology was led by Atkins supported by China Society for Urban Studies (CSUS), working closely with China's Ministry of Housing and Urban-Rural Development (MOHURD) and the FCO. The methodology is aimed at providing a blueprint for ELC urban planning in China.

On 28 May 2014 in Beijing, the 'Eco-Low Carbon Urban Planning Methodology' full content launch event and contract signing ceremony for the "Eco-Low Carbon Urban Planning Methodology" cities piloting project was hosted by MOHURD, FCO, Atkins and CSUS to celebrate the successful completion of the one year project and mark the start of the next stage project. Tang Kai, Chief Planner of MOHURD, Han Aixing, Deputy Director General, Department of Energy Efficiency in Buildings, Science and Technology of MOHURD, Vince Cable, UK Secretary of State for Business, Innovation and Skills and Andrew Key, Minister and Deputy Head of Mission at the British Embassy in Beijing participated in the ceremony and congratulated the project team. More than 60 guests participated in the event, comprising key stakeholder groups for the successful implementation of the methodology including city leaders, large developers, development financing institutions and media.

China's emerging ELC urbanisation initiative forms a key component of the government's 12th Five Year Plan, which places strong emphasis on energy and resource efficiency, reducing greenhouse gas emissions and environmental protection. The policy for "integrated, smart, green and low-carbon" was further emphasised in the National Urbanisation Plan (2014-2020) issued in March 2014.

Qiu Baoxing, Vice Minister of MOHURD, said: "The 'Eco-Low Carbon Urban Planning Methodology' addresses the needs of the new type of urbanisation, emphasises on 'integration, smart, green and low-carbon' and aims to improve the quality and the implementation of urbanisation which was set out in the National Urbanisation Plan. I



Mark Harrison, Atkins' director for urban planning and consultancy, and Andrew Key, Minister and Deputy Head of Mission at the British Embassy in Beijing, exchanging the contract, witnessed by VIP guests.

hope this report will serve as a catalyst to initiate more discussions about new urban planning approaches to achieve sustainable development, harmony with natural systems, less pollution and well reserved characteristic of cities."

Li Xun, Secretary General for CSUS, commented: "One of the major challenges in achieving these goals is the lack of practical guidance available to urban planners tasked with planning the infrastructure, homes and business premises to meet the needs of large numbers of additional people in urban areas. The ELC urban planning methodology is aimed at addressing that gap."

The new project will build on the success of the Atkins led FCO SPF work, providing the support required to develop the methodology for nationwide rollout. The work will focus on customising the methodology for specific local contexts and its implementation as well as its application in pilot cities. Pilot projects will be identified through intensive communication and a thorough assessment process working closely with MOHURD and local governments over the coming months.

"I am confident that the pilot implementation will set a good start to the wider application across China," added Qiu.

Vince Cable, UK's Secretary of State

for Business, Innovation and Skills, said: "The UK has world class expertise in urban planning and we want to capitalise on this by exporting our know how to fast growing countries like China as they address the challenges and opportunities of urbanisation."

"British companies like Atkins excel in the field of urbanisation, eco-cities and green buildings and this Eco-Low Carbon methodology is a great example," he added.

Chris Birdsong, Atkins' chief executive officer for Asia Pacific, said: "This is an important time for urban planning in China as the choices made in the next few years will determine the shape and success of the new type of urbanisation envisaged. Our methodology, which is closely aligned with Atkins' "Future Proofing Cities" initiative, provides a clear, practical approach for ELC urban planning based on international best practice tailored for Chinese urban planners. The approach places strong emphasis on integration (technical, process and conceptual), understanding local context, human scale development in harmony with nature, strong place making, and partnering to finance ELC development through green credit initiatives. I am excited by the momentum demonstrated here today and we look forward to working with our partners to develop the pilot projects and prepare the methodology for nationwide rollout."



KAN200

Flexible array element speaker

*Flexible 2mt chassis
Integrated NL4 connectors
High impedance for long lines
IP55 for outdoor installations
Fabric socks available in black or white*

A flexible speaker ?



AnaKonda

PERFECT FIT FOR ANY SOUND APPLICATION

The K-array Anakonda KAN200 is a flexible speaker designed for situations where a traditional speaker box is unable to fit within those awkward, out of reach places.

Each KAN200 module is measured at 2m long, and can be linked up using the integrated NL4 connectors to a maximum of 16 modules to create a seamless sound line.

www.k-array.com



Scan here for more details.

2014 SIA-Getz Architecture Prize for Emergent Architecture in Asia announced

World-renowned architects from India – Sonali and Manit Rastogi, selected as Co-Laureates for the 2014 Prize.

Singapore – A jury panel, comprising of renowned architects from Asia, has selected Sonali and Manit Rastogi from a world-renowned architectural design firm, Morphogenesis, as the Co-Laureates for the 2014 SIA-Getz Architecture Prize for Emergent Architecture in Asia. Sonali and Manit are the fifth recipients of the prestigious Award, which celebrates its 10th Anniversary this year. The Award is presented biennially by the Singapore Institute of Architects (SIA) and supported by Getz Bros & Co (Singapore) Pte Ltd.

Sonali and Manit Rastogi were presented with the Prize Medallion by Mr Theodore Chan, President, 54th Council 2014-2015, Singapore Institute of Architects, and Chairperson of the 2014 Jury Panel, at the Award Ceremony held at the SIA's Anniversary celebrations on Friday, 23 May 2014.

"As the architects of Singapore have established themselves in the international arena as expert designers of high-rise and sustainable living environments, SIA continues to champion Excellence in Architecture and the Built-Environment beyond our shores. It is therefore noteworthy that this year's winners come from India, one of the fastest growing emerging markets in Asia and also inline with the SIA-Getz Architecture Prize's objective to recognise and promote emergent Asian architects and architecture," said Mr Theodore Chan.

Members of the 2014 Jury Panel are:

- Mr Theodore Chan, SIA President 2014-2015
- Mr Richard Ho, Designer of the Year, 2013 President's Design Award
- Mr Tai Lee Siang, Group Managing Director Architecture Singapore, ONG&ONG Pte Ltd
- Ms Tan Pei Ing, ARCASIA President 2013-2014
- Professor Ar Jimmy Lim, 4th Laureate SIA-Getz Architecture Prize

Since its inauguration in 2005, the SIA-Getz Architecture Prize has continued to grow in stature among the architectural community in Asia. The five past competitions have, to date, drawn about 50 nominations from a dozen countries including Japan, China, India, Thailand, the Philippines, Malaysia, Sri Lanka, Indonesia, Vietnam, Taiwan, Hong Kong, South Korea, Pakistan and Singapore.



Manit Rastogi

Sonali Rastogi



The Pearl Academy of Fashion, Jaipur. Photo: © Andre J Fanthome

Audi Centre Singapore named "Best Retail Architecture" in the country

Singapore – Designed with a host of innovative offerings and services to delight customers, the Audi Centre Singapore was selected by a regional panel of judges as the most outstanding retail development in Singapore at the International Property Awards (Asia Pacific) 2014, held in Kuala Lumpur on 9 May 2014.

"We would like to congratulate our exclusive retail partner, Mr Hadi Tanaga and Premium Automobiles Pte Ltd, for clinching this significant award," said Mr Jeff Mannering, Managing Director, Audi Singapore. "Every aspect of the structure embodies the Audi DNA, right down to the premium service standards to delight our customers. In line with our firm ongoing commitment to the Singapore, we look forward to unveiling more progressive cars and technology to Audi fans here from this iconic facility."

Located at 281 Alexandra Road, the eight-storey Audi Centre Singapore was jointly designed by renowned architects from ONG&ONG Private Limited and Jens Niemann, Senior Architect, Corporate Architecture of Audi Singapore. Opened in 2012, the Audi Centre Singapore serves as Premium Automobile's sole showroom facility in Singapore. It opened in December 2012.

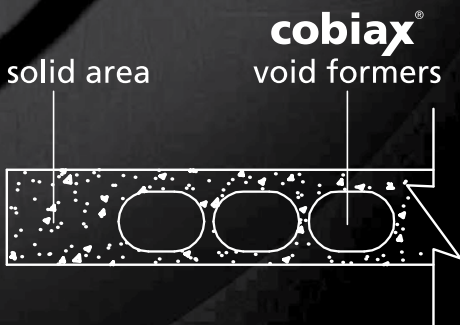


Audi Centre Singapore. Photo: © Audi Singapore



SINGAPORE
GOOD
DESIGN

cobiax[®] sustainable voided slabs



SIM HQ Extension



PARKROYAL on Pickering

Cobiax Technologies (Asia) Pte Ltd

510 Thomson Road
SLF Building, #08-00
Singapore 298135
Tel +65 6347 2184
info.asia@cobiax.com

Come visit us at Bex Asia 2014 Booth M20

Date: 1 - 3 September 2014

Venue: Halls A - B, Marina Bay Sands Expo & Convention Centre
Singapore 018956

www.cobiax.com

fast • productive • sustainable

NS BlueScope Lysaght Malaysia shares success stories at ARCHIDEX 2014

Kuala Lumpur, Malaysia – NSBLUESCOPE LYSAGHT MALAYSIA took part at the Malaysian building and construction industry exhibition, also known as ARCHIDEX 2014 which was held at Kuala Lumpur Convention Centre (KLCC) from 25-28 June 2014. The 15th International Architecture, Interior Design and Building Exhibition themed 'RejuveNATION'.

NS BlueScope Lysaght's booth, which was located at Hall 5 of KLCC, showcased the success stories of Lysaght's major contribution to iconic structures all across Malaysia for the past 50 years. The amazing display was accompanied with the slogan *'We help to build the Nation for 50 years, let us help build your dream!'* with the intention to educate and inspire visitors on the possibilities of a sustainable, renewable and highly creative architecture by using NS BlueScope Lysaght products.

The display showcased Lysaght's journey throughout the years with its forefathers and pioneers from the industry who have served as inspirations to the participants. From then until now, many popular and historical landmarks have gone on to use the company's steel products like the PETRONAS Twin Tower, Putrajaya Water Front, National Cancer Institute, Kuching International Airport and Sarawak Energy Berhad. During the exhibition, representatives from NS BlueScope Lysaght were on hand to provide information, product insights and applications to architects, engineers, developers, contractors and undergraduates.

All guests who visited the NS BlueScope Lysaght booth were also given an opportunity to participate in an interactive treasure hunt game named "No Equivalent". Winners of the treasure hunt walked away with smiles, as they were rewarded with a special thumb drive and goodie bag by solving mysterious riddles related to Lysaght's products.

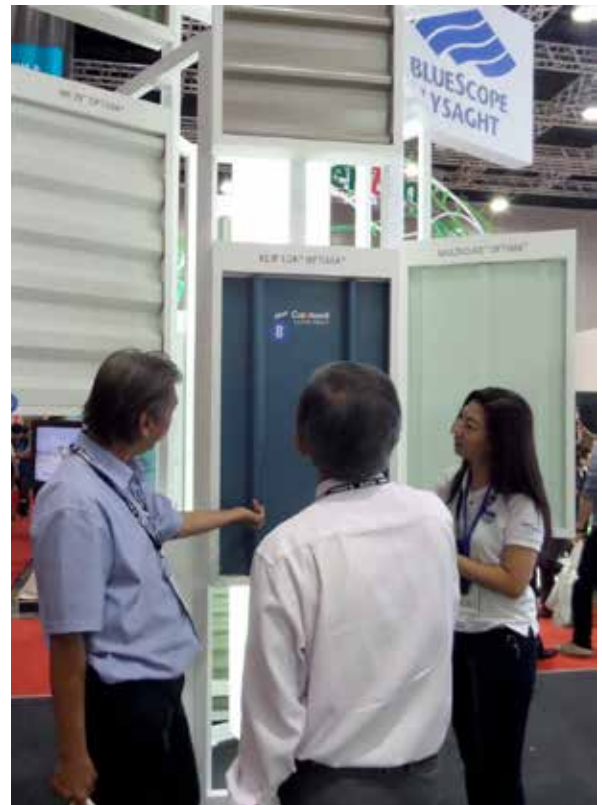
By the end of the four-day exhibition, NS BlueScope Lysaght booth received more than 1,200 guests consisting of professionals such as architects, consultants, quantity surveyors, developers, contractors as well as architecture undergraduates from local universities.



NS BlueScope Lysaght booth at ARCHIDEX 2014, with the theme *'We help to build the Nation for 50 years, let us help build your dream!'*.



Undergraduates listening to NS BlueScope Lysaght's representative briefing on sustainability, renewability as well as creative possibilities with Lysaght's product range.



All visitors were given the opportunity to gain further insight on NS BlueScope Lysaght products, with an up close and personal look and its products and services, assisted with representatives from the pioneer and leader of dynamic steel roofing and wall products.

Hotel Expo 2014 – Annual gathering of Asian hospitality industry

Macau – Macau's longest-running exhibition integrating the hotel, catering, hospitality as well as design & architecture sectors is celebrating its 10-year landmark this year, bringing with it even more products and innovative development.



The 10th International Hotel Expo (Hotel Expo 2014), a premium event exclusively supported by Asia Hotel Industry League (AHIL), will be staged at the Venetian Macao from 26-28 November 2014.

Backed with a favourable market situation where a number of large-scale luxury hotels & resorts in Macau are opening in 2015, and many projects being launched in China and Asia, this year's Hotel Expo will specially feature "Soft Architecture". It will provide suppliers of decorative installation, art paintings, decorative lighting, indoor & outdoor plant sculpture, curtain fabric, etc., with an ideal trade platform to explore this gigantic market.



Owners & key decision-makers of the hotels, casinos, resorts, clubhouses, and entertainment complexes from Macau & Hong Kong,

as well as delegations led by the hotel associations from China, Korea, Thailand, Malaysia, the Philippines and so forth will attend this splendid event, enhancing co-operation and development for the Asian hotel industry. Undoubtedly, Hotel Expo is not merely an exhibition but an annual gathering and a carnival of the Asian hospitality industry.

A string of fascinating activities will be held during the three-day exhibition, creating an ideal trade exchange platform and adding more attractions.

Exhibition highlights include:

- The 8th Asian Hotel General Managers Forum
- China Food Association presents high-end ingredients for hotel catering
- Seminar on Co-operation between Hotels & SMEs
- Coffee Culture Workshop
- Spa and Wellness Forum
- Asian Star-Graded Hotel Award
- Asian Best Hotel Suppliers Award
- Asia Culinary Contest
- Asia Green Award
- Best Hotel Furniture Suppliers Award
- Macau International Lotus Cup Hotel Furniture Design Competition

For more information on Hotel Expo 2014, tel (+852) 2827 6766, fax (+852) 2827 6870, e-mail general@coastal.com.hk or visit www.hotel-exhibition.com.



Den Braven

Better
results
through
Knowledge

Zwaluw Green-Foam

- ▶ MDI free polyurethane foam, no R-phrases and gloves
- ▶ Lowest air loss rate amongst all polyurethane foams
- ▶ High thermal and acoustic insulation properties



Den Braven Sealants B.V.

Denariusstraat 11 | 4903 RC Oosterhout | P.O. Box 194 |
4900 AD Oosterhout | The Netherlands
T +31 (0)162 - 491 000 | F +31 (0)162 - 451 217 |
E info@denbraven.com | www.denbraven.com

CapitaGreen celebrates topping-out ceremony



Minister Khaw Boon Wan & CapitaGreen JV partners perform the ceremonial topping-out. Photo: © CapitaLand Singapore

Singapore – CapitaLand, CapitaCommercial Trust, and Mitsubishi Estate Asia, the joint venture partners for the development of CapitaGreen, celebrated the topping-out of the new iconic 40-storey tall premium Grade A office building located at 138 Market Street in the heart of the Central Business District (CBD).

The ceremony was officiated by Guest-of-Honour Mr Khaw Boon Wan, the Minister for National Development. The Guest-of-Honour, representatives from the joint venture, main contractor Takenaka Corporation and the design architect Toyo Ito planted nine different plant species in a symbolic topping-out gesture to showcase the plants that will be grown in the building.

Mr Lim Ming Yan, President and Group Executive Officer of CapitaLand said, "We are delighted that CapitaGreen is on track to achieving completion by end 2014. This is made possible by the strong partnership among CapitaLand, CapitaCommercial Trust and Mitsubishi Estate Asia as well as the support and efforts of our consultants, contractors, staff, bankers, investors and government agencies."

CapitaGreen is constructed using the efficient top-down construction method, which allows for the building's basement and superstructure to be built concurrently. This method also eliminates the need for temporary steel struts for basement construction as the floor slabs are



Integrated artwork at Open Plaza at CapitaGreen. Photo: © CapitaLand Singapore



Sky Terrace at CapitaGreen. Photo: © CapitaLand Singapore

designed to support the basement walls, thus saving time and resources.

For its efficient and environmentally sustainable design, CapitaGreen has been awarded the Green Mark Platinum Award in 2012 and Universal Design GoldPLUS in 2013 by Singapore's Building and Construction Authority.

The building's innovative façade design has a 55 percent green ratio, meaning that over half the perimeter of its façade will be covered by living green plants. This energy-efficient double-skin façade comprises an outer layer of frameless glass and an inner envelope of double-glazed full-height glass. In between these two layers of glass are planter-boxes filled with shrubs and ground-covers. This façade helps to reduce solar heat gain by up to 26 percent. Premium, ultra-modern office space is further complemented by lush greenery in the sky terraces at selected floors and in the expansive roof-top sky garden, as well as unique sculptures by internationally renowned artists which will be tastefully integrated with the building design. With a net lettable area of approximately 700,000 square feet, CapitaGreen has one of the largest and most efficient, truly column-free floor plates (22,000 square feet to 26,000 square feet) and highest raised floor-to-ceiling height of 3.2 metres in any CBD office building.

While a skin of lush greenery envelops the full 245 metres of CapitaGreen, lush greenery can also be found in the sky terraces on 5th, 14th, and 26th floors and on the rooftop. The crown of the tower is marked by a distinctive Sky Forest of tropical trees and a sculptural 'petalled' funnel. These 'petals' draw in clean fresh air from the top of the tower into a cool void that penetrates 34 storeys of the building to deliver fresh air to tenants.

Mr Shojiro Kojima, Managing Director of Mitsubishi Estate Asia said, "CapitaGreen, our first office development in Singapore has made significant construction progress and leasing momentum with commitments from international companies. We have had a good experience working with our esteemed partners, Capitaland and CapitaCommercial Trust, and are looking forward to seeing this exciting and iconic addition to the Singapore's CBD skyline."

CapitaGreen is due to be completed by the end of this year.



CapitaGreen is expected to complete by the end of this year. Photo: © CapitaLand Singapore

...stainless steel wire rope products
and connectors for an unlimited
range of applications.

Architectural ropes and connectors

Jakob[®]
Rope Systems

Jakob of Switzerland 

www.jakob.com

Contact us:
Phone +41 34 495 10 10
eMail: asia@jakob.com

Dassault Systèmes showcases latest innovations at its annual 3DEXPERIENCE FORUM in Singapore

Singapore – Dassault Systèmes, the 3DEXPERIENCE Company, world leader in Product Lifecycle Management (PLM) solutions, 3D design software and 3D Digital Mock Up, presented its latest innovations at the annual 3DEXPERIENCE FORUM on 17 June 2014 at the Raffles Hotel in Singapore.

At the event, the company demonstrated how it is empowering businesses and organisations to innovate through the combination of social innovation capabilities, realistic 3D virtual experiences and intelligent search-based technologies on a single platform – the 3DEXPERIENCE Platform.

Dassault Systèmes' 3DEXPERIENCE FORUM brought together the company's customers and partners from across the region, offering a platform for knowledge sharing and networking. This year, the event was focused on Doing Business in the Age of Experience.

"At Dassault Systèmes, we help companies do more than deliver products alone. To help business leaders understand the present, navigate the future and create compelling customer experiences, we have introduced the 3DEXPERIENCE Platform. Business leaders can now connect people, data, solutions and ideas from within and outside the enterprise in a single, visual and intuitive environment creating a comprehensive business picture," said Philippe Forestier, Executive Vice President, Global Affairs and Communities, Dassault Systèmes.

At the 3DEXPERIENCE FORUM, Dassault Systèmes' demonstrated its offerings designed for specific industries:

- 1) Energy, Process and Utilities
- 2) Transportation and Mobility
- 3) Aerospace and Defense
- 4) Natural Resources



Samson Khaou (left) and Philippe Forestier at the 3DEXPERIENCE FORUM in Singapore.

Dr Christopher Holmes, head of IDC Manufacturing Insights, spoke on trends that the analyst house is seeing around this development: "All industries are currently going through a revolutionary era where technology is enabling them to be more agile, efficient and innovative."

"Industry players are entering the third platform where big data and analytics, cloud computing, mobility and social business, are acting as disruptive forces – enabling new business models, creating opportunities for new competitors, and allowing customers and consumers to engage in an entirely different way," he continued.

Customers, Dassault Systèmes executives and partners also shared their success and best practices to drive sustainable growth. Mr Pablo Viejo, Sustainable Cities Chief Officer for Singapore, Electricite de France (EDF) demonstrated the success of its city planning applications based on the 3DEXPERIENCE City Platform while Associate Professor Dr Mohd Razif Idris, Dean of Institute of Product

Design and Manufacturing, Universiti of Kuala Lumpur spoke about adapting the curriculum of engineering education on industry skills requirements as part of the MoU signed between Dassault Systèmes and MARA.

The three industry breakout sessions on Aerospace & Defense, Transportation & Mobility and Natural Resources had an exciting line up of speakers from both the industry such as Australian Aerospace, Mt Gibson, Russell Mineral Equipment, Fugro and the partners' community such as Memko and ADN. Additionally, an onsite Dassault Systèmes 3DEXPERIENCE Playground offered attendees live demos and virtual experiences. The Wall of 3DEXPERIENCE provided an interactive and entertaining showcase of its 3DEXPERIENCE City application and selected projects from Passion for Innovation Institute such as D-Day, Paris 3D, La Douce and Operation Lune.

The event was sponsored by Dell, HP, AMD, SEACAD, ATE, WarleyParsons and partnered with Singapore IT Federation.

SOUTHEAST ASIA

building

SOUTHEAST ASIA

building

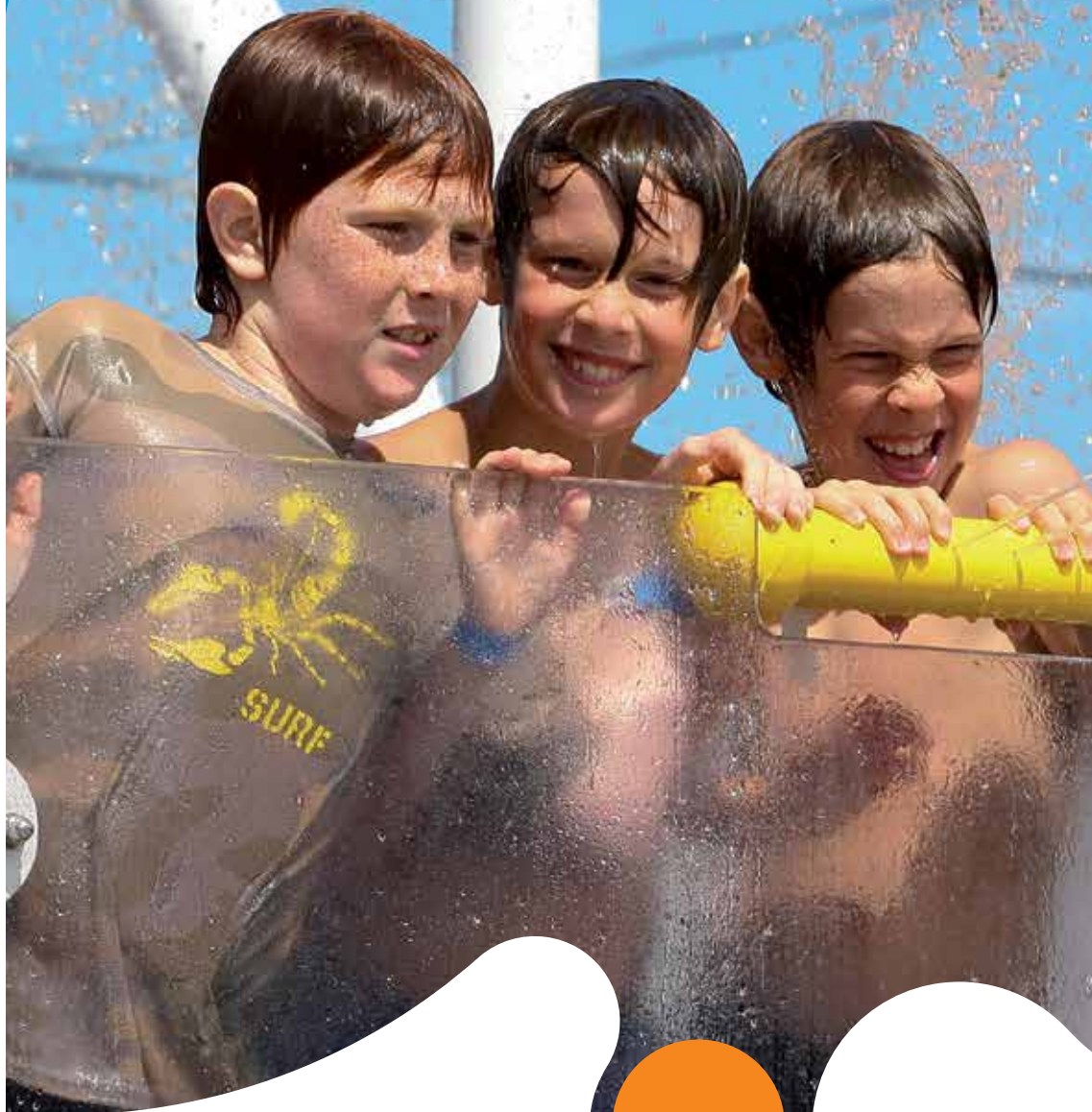
INCORPORATING ARCHITECTURE, INTERIOR DESIGN AND LANDSCAPING

Find us on
Facebook

www.facebook.com/southeastasiabuilding

POOLPLAY™ Solutions

UNIQUE AND INTERACTIVE
PLAY EXPERIENCES



INNOVATIVE SEEFLOW™ POLYMER

Lighten-up your environment



Appealing playful forms



Colorful reflections



Translucent shapes

World leader in aquatic play
solutions with over 4,000
installations worldwide



Vortex Aquatic Structures International Inc. ● 1.877.586.7839 (toll free USA/CND)
514.694.3868 (Europe/Others) ● info@vortex-intl.com ● vortex-intl.com



CT-ART CREATION PTE LTD

25 Mandai Estate #07-10

Innovation Place Tower 1 Singapore 729930

Tel: +65 6762 9891 Fax: +65 6762 7980

Website: www.ctart.com.sg Email: enquiry@ctart.com.sg

Recreation Specialist for Playgrounds, Rope Play, Aquatic Play & Filtration, Adventure Slides, Multi-generational Exercise & Elderly Wellness Equipment, Safety Surfacing, Outdoor Furniture, Planter Systems, Custom and Theme Design Play Solutions.

Surbana collaborates with Autodesk to create a better built environment



Steve Blum, Senior Vice President, Worldwide Sales & Services, Autodesk (left) and Low Cher Ek, Deputy CEO, Surbana International Consultants.

Singapore – Surbana International Consultants Pte Ltd, a leading consultancy specialising in sustainable urban solutions, and Autodesk, Inc. have signed a Memorandum of Understanding (MOU). The MOU enables Surbana to expand its use of Autodesk BIM technologies across its projects, from conceptual design to construction management. Surbana employs 1,900 employees in 13 cities across Asia, Africa and the Middle East. Its noteworthy projects include CleanTech One in Singapore, Tianjin Eco City in China, Kigali City Masterplan in Rwanda and The Light in Malaysia.

A pioneer in adopting BIM, the MOU will advance Surbana's BIM capabilities as a multi-disciplinary consultancy firm to rollout Autodesk BIM solutions across its operations in Singapore and worldwide, to benefit its customers. Using BIM's Integrated Design Process, architects, engineers and consultants are able to work together simultaneously throughout a project lifecycle, minimising risk and wastage of resources from design to built.

As part of the MOU, Autodesk and Surbana will collaborate on: BIM implementation and workflows for planning and design; joint research and development projects; and advisory services. To support BIM adoption within Surbana, Autodesk will co-develop course curriculum for training purposes. Autodesk also intends to conduct programs to promote design excellence in Sustainable Design and Universal Design within Surbana.

"Low Cher Ek, Surbana International Consultant's Deputy CEO said, "BIM optimises the entire built process which facilitates a smooth workflow between planning and design to deliver projects that are of higher quality yet cost efficient. Our strengthened collaboration with Autodesk will boost Surbana's in-house capabilities in delivering integrated consultancy expertise to our customers in Singapore and abroad."

At Singapore's Building and Construction Authority 2014 Awards, Surbana received the Built Environment Leadership Award (Gold Class). The award recognises outstanding firms and builders that have demonstrated excellence and leadership in Singapore's built environment, by using processes like BIM to increase their competitiveness and productivity.

"BIM is rapidly transforming the global architecture, engineering and construction industry. We're excited to collaborate with Surbana to advance the adoption of BIM and be at the forefront of Singapore's next phase of urban planning and infrastructure design," said V. R. Srivatsan, Managing Director, Autodesk – ASEAN. "We're combining the strengths of leading BIM desktop software with new cloud and mobile technology to improve the future of building design and construction. It's an honour to partner with Surbana to help achieve their sustainable cities vision and transform the way they work through BIM."

Dubai Supreme Council of Energy reviews strategy to reduce carbon emissions

Dubai, UAE – HE Saeed Mohammed Al Tayer, Vice Chairman of the Dubai Supreme Council of Energy, headed the 29th meeting of the Supreme Council of Energy at its headquarters, attended by HE Ahmed Butti Al Muhairbi, Secretary General of the Supreme Council of Energy.

The meeting was also attended by representatives of members companies, Abdullah Kalban , CEO & MD of Emirates Global Aluminium, Abdullah Karim, GM of Dubai Petroleum, Waleed Salman, Chairman of Dubai Carbon Centre of Excellence, Salem bin Mesmaar, Assistant Director-General for Supervision of Environment, Health & Safety, at Dubai Municipality, Dr. Yousef Al Ali, Executive Director of Roads & Transport Authority (RTA), as well as representatives from Dubai Supply Authority.

The meeting agenda included the progress of the Dubai Integrated Energy Strategy 2030 for the supply and storage infrastructure for natural gas, the current carbon reduction strategy and development of frameworks for carbon dioxide reduction in Dubai by the end of 2014 in line with the UAE Vision 2021.

"We reviewed the strategic plan of the RTA for 2013-2017, which is aligned to the Dubai Integrated Energy Strategy 2030, relating to energy conservation and carbon dioxide reduction through several initiatives including mass transit, street lighting efficiency and increased use of the Dubai Metro," said Al Tayer.

"RTA also plans to use bio fuel in its green buses as well as purchase 70 hybrid cars for Dubai Taxi to add to the 20 cars currently in servicey 2030," added Al Tayer. Al Tayer honoured the members of the Technical Committee of the first Emirates Energy Award following its success, which attracted strong participation from across the Middle East and North Africa.



From left to right: HE Ahmad Al Muhairbi – Secretary General of Supreme Council of Energy; Mr Easa Al Bastaki – President of the University of Dubai; and HE Saeed Al Tayer – Vice Chairman of Supreme Council of Energy.

**NOW
AVAILABLE IN
SINGAPORE**
from
The Nature Company

Outdeco's easy to install screen modules offers a design for every taste and can be customised to any colour palette.

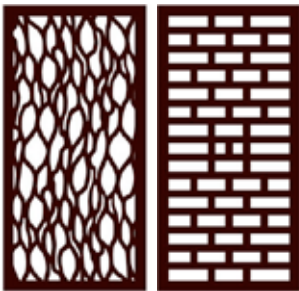
LIFESTYLE READY TO INSTALL

**OUT
DECO**®

Exterior & Interior Features
Fence Extensions • Feature Walls
Offset Fence Cover • Entrances
Patio facades / partitions
Arbors • Gate Panels • Courtyards
Backlit features • Watertank Facades

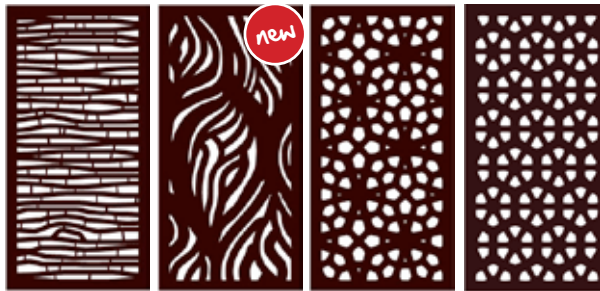
Available in varied screen designs and privacy/blockout level (60-90%) for a broad range of outdoor/indoor applications, at affordable price.

60% PRIVACY/BLOCKOUT



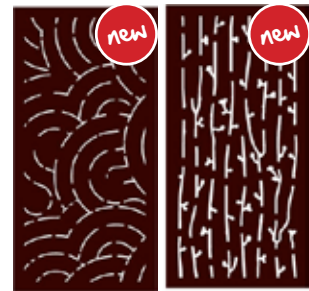
LEAF STREAM™ MAHJONG™

80% PRIVACY/BLOCKOUT



BUNGALOW™ WOOLEMI™ MARAKESH™ OSAKA™

90%+ PRIVACY/BLOCKOUT



CUMULUS™ ORCHARD™

Experience this Lifestyle Screen at SIA Hospitality Lounge
ArchXpo 2014, 29 September - 1 October, Marina Bay Sands



The Nature Company (S) Pte Ltd.

Tel: (+65) 6256 3505 ext 49. Email: sales@natureco.com.sg

Showroom: 15 Joan Road Singapore 298899. www.natureco.com.sg

Singapore-based consortium, led by CPG Consultants, appointed to develop Myanmar's Kyauk Phyu Special Economic Zone

Singapore – Singapore-based consortium led by CPG Consultants Pte Ltd has been appointed to develop the master plan that will guide the development of Myanmar's Kyauk Phyu Special Economic Zone (KP SEZ).

CPG Consortium, comprising CPG Consultants Pte Ltd, DTZ Debenham Tie Leung (SEA) Pte Ltd (DTZ), Ernst & Young Solutions LLP (EY), Global Maritime And Port Services Pte Ltd (GMAPS), and PM Link Pte Ltd (PM Link), will oversee the master planning of the site. Their scope also includes providing consultancy for the market positioning of KP SEZ, marine and port studies, and financial planning. CPG Consortium will also be responsible for calling for a tender to seek the right investors to provide sustainable solutions for the economic zone until 2036.

Kyauk Phyu, in western Myanmar, is one of three Special Economic Zones (SEZs) earmarked for development by the Government of the Republic of the Union of Myanmar; the other two are Dawei in the south of the country and Thilawa (near Yangon).

The agreement was signed with the Kyauk Phyu Special Economic Zone Management Committee, and the consortium is working closely with the Bid Evaluation and Awarding Committee (BEAC), which represents the Myanmar government, on the tender and selection process, as well as the KP SEZ Working Committee, to drive the project. Local Rakhine and Kyauk Phyu communities will also be involved throughout the project.

Strategically located at the geographic centre of three economically vibrant and dynamic markets – China, India, and ASEAN – Myanmar is positioned to serve as a trade corridor that will connect the twelve Asian economies.

"The development will be environmentally sensitive, stimulating the economy while promoting job creation and income generation for the region of Kyauk Phyu and beyond. It will also boost the development of local industries with high growth potential, such as construction and fisheries," said Mrs Nina Yang, Executive Director (Urban Planning) of CPG Consultants.

CPG Consortium will invite interested firms to submit their Expressions of Interests in July 2014 for phase one of the economic zone which will include three key elements – development of a



Mrs Nina Yang, Executive Director (Urban Planning), CPG Consultants Pte Ltd presenting the Master Plan for the Kyauk Phyu Special Economic Zone. Photo: © CPG Consultants Pte Ltd

deep sea port, an industrial park, and an integrated residential area with education, healthcare, and recreational facilities. When completed, the economic zone will cover approximately 75 square kilometres in land area. The integrated residential area will cover some 500 hectares or 5 square kilometres and cater to around 40,000 household dwellings.

Open to investors and developers from all countries, successful parties will undertake the integrated responsibility of financing, providing infrastructure, marketing and leasing of the respective projects that they are awarded.

The tender process will be conducted in two stages. In the first stage, parties can express their interest. Shortlisted companies will then be invited to submit their proposals in the second stage. The Myanmar government is undertaking substantial infrastructure investments to upgrade the existing road network in KP SEZ. A new power plant and power lines are also under construction.

KP SEZ will also be environmentally sustainable. The master plan foresees Environmental Impact Assessments to reduce the environmental impact. The development of phase one is expected to start in 2015.

ABB in Singapore looks to the sun to reduce carbon footprint

Singapore – ABB in Singapore has taken a big step towards reducing its carbon footprint and becoming a more sustainable company with the recent commissioning of over 1,026 solar panels at its Turbocharger, Motor and Generator Service plant in Tuas. The service facility previously relied exclusively on power from the grid, which is mostly generated from natural gas in Singapore.

The new solar installation at Tuas is part of a 25-year lease with Sunseap Leasing (Singapore's largest solar asset owner with 18MW of solar leasing project references) and incorporates an ABB central inverter at its core, the Power-One Aurora Plus. This is the first time a central inverter has been used in Singapore, and the Power-One inverter is unique in its modularity, allowing each module to function independently. Together with real-time power tracking and different roof orientations, this enables greater efficiency when harnessing solar energy.

The 1,026 panels are expected to generate a total energy output of 320kW, which results in an estimated 400,000 kWh of energy-savings a year. This is an amount that's sufficient to power 70 Singapore households for a year. It would also lead to an annual reduction in CO2 output by up to 200 tons. This move towards a greater reliance on solar energy is a positive one for ABB in Singapore, with a long term goal of utilising solar power at all 5 Singapore offices.

"As a leader in power and automation technology, ABB has pioneered many technologies that have led to greater environmental efficiency in the region, and it is important that we develop a greater reliance on renewable energy moving forward," said Dorothy Tan, sub-regional HSE manager for ABB. "We hope to implement solar installations at all of our local offices and workshops over the next few years which will not only reduce our carbon footprint but save us a considerable amount of money too," she added.

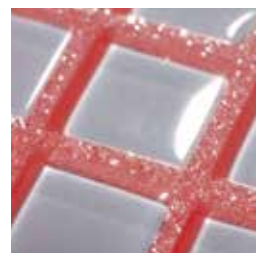


The epoxy grout
with **variety colour** choice
signed by Mapei.

Kerapoxy Design®

Kerapoxy Design® is a highly decorative grout which enhances the most precious ceramic tiles and mosaics. With a translucent effect, it is bright, durable and easy to apply. It is available in a range of colours that can be mixed with each other and also with **MapeGlitter** metallic coloured glitter to create special aesthetic effects. **Kerapoxy Design®**: no explanation required, the name speaks for itself.

Discover the world of Mapei: www.mapei.com.sg



Mapei Far East Pte Ltd
28 Tuas West Road, Singapore 638383
Tel: +65 68623488 Fax: +65 68621012/13
Website: www.mapei.com.sg Email: mapei@mapei.com.sg



Two winners of Archifest 2014 Pavilion Design Competition to build Festival's Centre

Singapore – The Archifest 2014 Pavilion Design Competition has announced two winners this year. They are Architect Fong Hoo Cheong of 'HCF and Associates', and Architect Kelvin Kan and Lead Designer Shinya Okuda of 'AgFacadesign and NUS'. Both will go on to build the Pavilion at Archifest 2014, Singapore's annual architecture festival presented by the Singapore Institute of Architects (SIA).

Returning in its 8th year come this September, Archifest 2014 will feature the theme 'CROWD', which seeks to open up discussions on how the notion of Crowd operates and contributes to architecture and urbanism, through an engaging line-up of exhibitions, activities and speakers that visitors can look forward to. The Pavilion, which will be the main base of Archifest 2014 where the various events and activities start from or run within the space, will physically embody the spirit of this year's theme 'CROWD'.

Opened to local architects in June, the Archifest 2014 Pavilion Design Competition received 28 design proposals, the highest number of entries received since the inaugural competition in 2012. The winning designs have been deliberated in two rounds of judging by a panel comprising of Mr Theodore Chan, President of Singapore's Institute of Architects; Mr Jacks Yeo of Design Singapore Council (DSg); Ms Tracey Hwang of Urban Redevelopment Authority (URA); Mr James Tan of Archifest Steering Committee; Mr Chang Yong Ter of Chang Architects and Mr Suen Kwok of RSP, last year's competition winner.

SIA's President and Pavilion Jury member, Theodore Chan commented: "The winning entries were chosen based on how well this year's theme was encompassed in their designs. Each winning submission is independently exceptional. This unprecedented outcome is due to the highest quality of the winning submissions and the intensity of the design competition recording the highest number of top quality submissions in the history of Archifest. Both design proposals have shown great flexibility in accommodating various people and the different activities, as well as, showcased the architectural idea of people and their ability to empower change within the city. We are excited to see how collaboration between the two winners will culminate towards the Archifest 2014 pavilion."

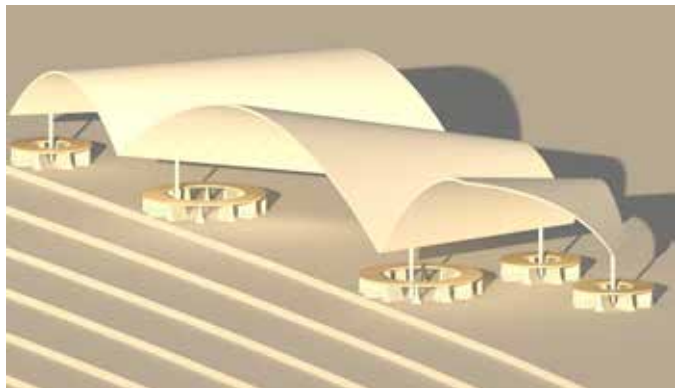
'HCF and Associates' and 'AgFacadesign and NUS' were awarded this year for their design concept entries titled, 'FUGUE 1357' and 'CLOUD ARCH' respectively. As winners, both firms will be given a budget of \$50,000 to build the Pavilion which will span across up to 623 square metres, and an additional \$8,000 in professional fees.

The public can look forward to the final design of the Pavilion, which will be a physical manifestation of the combined ideas between the two winning entries, at Archifest 2014 held from 26 September to 11 October 2014. The two-week long festival will be anchored at the Archifest Pavilion, situated at the Marina Bay Event Plaza with a pop-up café. The festival will also feature Urban Lab, Archifest Conference, Architours and other fringe events, which will be announced later.

For more information, visit www.facebook.com/archifest.



'FUGUE 1357' by HCF and Associates. Photo: © Archifest / HCF and Associates



'CLOUD ARCH' by AgFacadesign and NUS. Photo: © Archifest / AgFacadesign and NUS

Growing from strength to strength

ARCHIDEX14 celebrated its 15th installment as the region's premier business event for the architecture, interior design and building industry.

Kuala Lumpur, Malaysia – ARCHIDEX, one of Southeast Asia's leading business event for the architecture, interior design and building industry, celebrated its biggest show ever from 25-29 June at the Kuala Lumpur Convention Centre, Malaysia.

The 15th installment of this highly successful and much anticipated annual gathering of professionals in the architecture and building industry drew a record turnout of over 33,200 trade and

public visitors with 550 companies from 17 countries that took up 1,250 exhibition booths in 9 halls of the convention centre.

Hailed as one of Malaysia's largest exhibition and networking events in the trade calendar for the industry, ARCHIDEX has earned itself a pivotal position as a leading gathering among Southeast Asia's fraternity of architects, urban planners, interior designers, academicians, students and various professionals.

For the first time, ARCHIDEX was jointly held with the ECO-B exhibition, which explores a growing global interest in environmentally responsible buildings. A host of international architects also gathered in the convention centre during the eventful week for the annual International Architectural Design Conference (DATUM: KL) featuring a portfolio of inspiring, avant garde speakers, as well as the 16th Asian Congress of Architects (ACA16), which is a major bi-annual architecture conference, and the 35th General Meeting of the Architects Regional Council of Asia (ARCASIA).

ARCHIDEX 2014 is jointly organised by leading Malaysian business trade show and lifestyle events organiser C.I.S Network Sdn Bhd and the Malaysian Institute of Architects (Pertubuhan Akitek Malaysia / PAM). "We are delighted to celebrate our 15th anniversary this year and to see this annual event growing in size and strength; it is an honour to play a part in fostering a spirit of innovation that benefits the industry," said C.I.S Network Sdn Bhd, President Dato' Vincent Lim, who is also the new Malaysian Association of Convention and Exhibition Organisers and Suppliers (MACEOS) President.

Malaysia won the bid to host the ACA16 for the third time since 2000 and 1986. ACA16 was themed RejuveNATION with the aim for "Stimulation to a renewed vigour and dynamism in the profession and process of creative output". "As architects, we are on a constant quest to improve the quality of life through the built environment and we seek ever better ways to design and build. Events such as ARCHIDEX play a role in providing a powerful platform for architects to converge in sharing ideas and shaping our built future together," said Ar Chan Seong Aun, PAM President.

"The occasion marks yet another successful staging of a highly anticipated annual exhibition. Not only has ARCHIDEX become an influential event in the building and design industry within Malaysia, it has evolved into one of the region's primary platforms to showcase to the strengths of what the industry has to offer," said Malaysian Minister of Public Works Datuk Haji Fadillah Haji Yusof.



This year's show was marked by a strong presence from foreign exhibitors that include Austria, Australia, China, Estonia, France, Germany, Hong Kong, Indonesia, Japan, Korea, Singapore, Spain, Switzerland, Thailand, Turkey, United Arab Emirates and Malaysia. Five country pavilions include Austria, Germany, Singapore, Korea and China. Prizes were also awarded for the coveted Best Booth Design Awards as well as New Product Awards and New Eco Products to recognise outstanding participants.

The winners were:

New Product Awards

- Duo Series *submitted by* VRH
- Green Formwork System *submitted by* Ply Tec Formwork System Industries Sdn Bhd
- Luna Collection-La Fidele *submitted by* HM Fabric Sdn Bhd
- Medklinn Pro AS20 *submitted by* Medklinn Manufacturing Sdn Bhd
- Megaman® GX53 LED *submitted by* Megaman Electronic & Lighting (M) Sdn Bhd
- Moment *submitted by* United Carpet Sdn Bhd
- Nano Shield Anti-Bacterial Floor *submitted by* Inovar Contracts Sdn Bhd
- One Touch *submitted by* Matic Office System Sdn Bhd
- Solar Cool Air Conditioning *submitted by* LG Global Building Materials (M) Sdn Bhd
- Solid Thermal Insulation Coating (TIC) *submitted by* Axstech Asia Sdn Bhd

New Eco Product Awards

- Ekous – Recycled Acoustic Panel *submitted by* Taz Corporation Sdn Bhd
- Evaporative Air-Cooled (Modular) Hybrid Chiller *submitted by* Al Co Sales & Services Sdn Bhd
- Finodoor *submitted by* Finopeous Packaging Industries Sdn Bhd
- IPVC DH2040 Drain Pipes *submitted by* Weimar Enterprise Sdn Bhd

Exhibitors, trade visitors and guests were delighted with ARCHIDEX 2014. "This is our second show with ARCHIDEX and it's been equally successful, as it's given our products good exposure," said Chris Kooijman, Director, Eco Outdoor Sdn Bhd.

"ARCHIDEX gave us a lot of invaluable exposure to directly reach out to the customers we want, especially as we have just introduced Hormann into the market last year," said Jason Tan, General Manager of Hormann Doors Malaysia Sdn Bhd.

ARCHIDEX 2015 returns next year from 12-15 August 2015 at the Kuala Lumpur Convention Centre with the theme "ADVANCING ARCHITECTURE IN ASIA".

For more information, visit www.archidex.com.my.

“PEA presents EcoLightTech Asia 2014” show aims to make Thailand a leader in energy conservation and lighting innovation in ASEAN

Bangkok, Thailand – The Provincial Electricity Authority (PEA) will host “PEA presents EcoLightTech Asia 2014” together with N.C.C. Exhibition Organizer (NEO) as the event organizer from 12-14 November 2014 at the Queen Sirikit National Convention Center in Bangkok, Thailand. With the theme “Light for Life”, the event is expected to help turn energy conservation policy into practice, and to encourage the private sector to give 100 percent loan in energy saving technology to support and assist Thai entrepreneurs in lighting industry for global competition. Leading enterprises in Thailand and abroad are also welcome to exhibit their innovations, and open trading platforms for business negotiations. All of these will contribute to achieving the ultimate goal of Thailand to become the hub of energy conserving innovations and the lighting technology market of ASEAN.

Mr. Numchai Lowattanakul, Governor of PEA, revealed: “PEA has a clear policy to promote energy conservation and energy efficiency in households and industries by offering incentives for entrepreneurs to invest in new energy saving devices, and by encouraging households to reduce electricity consumption in a practical way. Meanwhile, PEA is also supporting several researches to develop and set standards for electrical appliances and energy saving buildings.”

Being the host of “PEA presents EcoLightTech Asia 2014”, Thailand will reinforce the guidelines and frameworks for industrial entrepreneurs because the country realizes its importance as a major factor that drives the economy and forms a firm foundation of social development and environmental sustainability. As a result, PEA has set out plans in three aspects.

In terms of policy, PEA promotes energy efficiency through Eco Light Technology. Accordingly, an innovative energy-saving light bulb or LED lighting has been developed. LED helps reduce production costs and can be designed and applied to a wide range of applications. Other environmental projects supported by PEA include “PEA 1 Save 1 Baht” for industrial sector, and “PEA 1 Save 2 Baht” for SMEs to encourage a sustainable and tangible energy saving practice.

In terms of network, the PEA



MOU signing ceremony with the Provincial Electricity Authority (PEA) as the host organiser.

alliance network, the leader in lighting and energy efficiency has coordinated with lighting groups and other networks in the country and abroad. This cooperation ensures that this event will attract quality personnel, experts in electrical power and lighting, and leading entrepreneurs to exchange and share the latest ideas in lighting innovations. At the same time, the event will be a platform for trade negotiations, businesses and other related industries from electronic components to ready-made products. All of these will be utmost beneficial for the development of energy technology and intelligent energy consumption.

In terms of knowledge, innovation, and technology, PEA is like a meeting place of luminaries and experts in various fields of energy conservation. PEA also invests in a lot of prototypes in technology for multiple applications in the future. And in this event, PEA will put its latest work in automobile innovation on display, including a complete Electric Vehicle: EV, which can be used practically. Simulated environments in energy efficient buildings of the future, such as an energy efficient office, a green energy hotel room, and a LED-powered luxury car showroom, coupled with a practical workshop will be included in the exhibition. Entrepreneurs will have a chance to absorb and apply this knowledge to practical use.

Mr. Sakchai Pattarapreechakul, President of NCC Group added: “The feedback after the declaration that PEA will be hosting EcoLightTech Asia 2014, the trade show of innovative energy-efficient lighting technology for the second time was very impressive and has made this event even more interesting in the international level. Because of the success from last year’s event that attracted over 80 top entrepreneurs who were interested in joining the exhibition, and more than 4,000 visitors from 10 countries in the ASEAN region such as China, Taiwan, Japan, Korea, the Philippines, Myanmar and Indonesia resulting in a turnover of up to THB 3,000 million, we can be sure that the event this year will soar into the international level. Thailand will be upgraded in a variety of aspects, such as the development and promotion of energy conservation in the national level, the country’s economy through the trading platform in lighting industry, and the development in knowledge, innovation and technology in order to keep the nation competitive in the ASEAN market. We wish to see Thailand being elevated as the hub of innovation, energy conservation, and lighting technology market of ASEAN.”

For more information, tel (+66) 2 203 4261-2, email ecolight@Qsncc.com or visit www.ecolight-tech.com.

 **PROVINCIAL ELECTRICITY AUTHORITY**
PRESENTS

 **EcoLightTech**
Asia/2014

2nd International Tradeshow for Green Technologies
and Innovations in Lighting

November 12-14, 2014

Plenary Hall, Queen Sirikit National Convention Center,
Bangkok, Thailand

HOST ORGANIZER:



OFFICIAL SUPPORTER:



MEDIA PARTNER:



EXCLUSIVE FINANCIAL
INSTITUTION:



SUPPORTERS:



SUPPORTING MEDIA PARTNERS:



ORGANIZER:



For more information:
N.C.C. Exhibition Organizer Co., Ltd. (NEO)
Tel: +66 2 203-4260-62
Fax: +66 2 203-4250-1
E-mail: ecolight@Qsncc.com

www.ecolight-tech.com

KONE wins order for Saudi Arabia's Kingdom Tower

Helsinki, Finland – Jeddah Economic Co – the owner and developer of Kingdom Tower and Kingdom City – in Jeddah, Saudi Arabia, chaired by HRH Prince Al Waleed Bin Talal Al Saud, Chairman of Kingdom Holding Co, has selected KONE as the vertical transportation provider to deliver the world's fastest and highest double-decker elevators to Kingdom Tower.

Kingdom Tower, which is being built by Saudi Bin Laden Group and scheduled to become the world's tallest building, is expected to rise to the height of more than one kilometre upon completion in 2018.

Featuring KONE's people flow solutions, the building will have the world's fastest double deck elevators with travel speed of over 10 m/s as well as the world's highest elevator rise at 660 metres. Kingdom Tower will house offices, a Four Seasons hotel and serviced apartments, residential apartments as well as the world's tallest observation spot.



KONE UltraRope in elevator shaft. Photo: © KONE



Kingdom Tower. Copyright Adrian Smith + Gordon Gill Architecture

The building will be equipped with altogether 65 KONE elevators and escalators. The order includes KONE Double Deck MiniSpace™ elevators with revolutionary KONE UltraRope™ hoisting technology. KONE UltraRope is a new high-rise elevator technology that is set to break industry limits and enable future elevator travel heights of 1 kilometre - twice the distance currently feasible. The KONE UltraRope technology eliminates the disadvantages of conventional steel rope and opens up a world of possibilities in high-rise building design.

The KONE equipment in Kingdom Tower will include 21 KONE MonoSpace® elevators, 29 KONE MiniSpace elevators, seven KONE DoubleDeck MiniSpace elevators and eight KONE TravelMaster 110 escalators. To complement the building's exclusive look, KONE will provide the customer with tailor-designed car interiors and landing doors as well as latest People Flow Intelligence solutions including KONE Destination Control Systems and premium KONE Infoscreen displays. Other special solutions include KONE E-Link™ remote monitoring systems, as well as an occupant evacuation operation system for emergency situations. The order includes a 10-year equipment maintenance contract.

"We have been highly impressed with KONE's innovative solutions to high-rise buildings. This is another cornerstone for a development of this magnitude and we look forward to creating this landmark building in all standards," said Mr Mounib Hammoud, CEO of Jeddah Economic Company.

"Close cooperation between all project partners, and with KONE Areco team locally, our technical professionalism and people flow planning expertise was a winning combination in helping us land the order," commented Noud Veeger, Executive Vice President for KONE in Asia Pacific and Middle East. "We hail this project with great excitement," he added.

Do you have news for us?

Good! Email us at seab@tradelinkmedia.com.sg





The 3rd International Exhibition on Heating, Ventilation, Air-Conditioning, Air-Filtration & Purification, Refrigeration Systems, Pumps, Valves, Compressors and Related Systems In Indonesia



Linking You To The Best

28-30 October 2014 | Jakarta International Expo
PRE-REGISTER YOUR VISIT NOW!
www.hvacrseries.com/indonesia

Highlights:

- More Than 200 Exhibiting Companies And Brands From Over 20 Countries
- Conference and Technical Presentations
- Business Matching Service For Exhibitors and Visitors To Maximize Their Networking Potential

Organised by:
informa
 exhibitions

Platinum Sponsor:
Danfoss

Supported by:
 Channel



For enquiries, please contact:
Indonesia: PT Channel Expo
 Tel: +6221 3288 8862/3
 Email: arifwicaksono.msfc@gmail.com
Overseas: Informa Exhibitions, Singapore
 Tel: +65 6411 7725
 Email: hvacrps.marketing@informa.com

Supporting Media:

- Allianz Network Group
- Airconditioning-Systems.com
- Africadetails.com
- BCI Asia
- Build Avenue
- Building Review Journal
- Business Vibes
- Find Exporters.com
- Future Arc
- India Export News
- Industrial Automation Asia
- Industrial Guide Asia
- Industrial News Asia
- Kenyadetails.com
- Southeast Asia Building
- Techno Konstruksi
- The Green Book
- Trade Key
- Vietnam Manufacturers

AA Studio converts Red Hook's iconic New York Dock Company into mixed-use building

New York, USA – Brooklyn-based AA Studio has announced the design for the conversion of a 230,000 square foot mixed-use warehouse at 160 Imlay Street in the iconic New York Dock Building located on Red Hook's waterfront. Developed by Est4te Four, the renovated 6-storey building with converted water tower will house 6 commercial spaces consisting of art studios, offices, and café on the ground floor, with 70 contemporary residential loft-style apartments and rooftop deck and gardens above. Future Green Studio has designed all of the landscaping including the street level and roof deck gardens. Construction is underway and sales on the condominium units have begun. The project is slated for completion in summer of 2016.

"We recognised in Red Hook the creative spirit that exists, positioning Brooklyn as the new frontier for visionary design," said Aldo Andreoli, Principal of AA Studio. "We wanted, first of all, to keep as much as possible; the purity of the existing concrete structure, incorporating at the same time the best new technologies available for energy efficiency and design quality," he added.

A former industrial warehouse, The New York Dock Building was built in 1914 as one of the first poured-in-place concrete structures. By keeping the aesthetic of the existing board-formed concrete columns, each residential unit will retain the original concrete structural expression via exposed ceilings and columns in the main living, dining and sleeping areas, with ceiling heights reaching 12 to 16 feet. The new triple-pane windows made of steel and fabricated



Photo: © AA Studio

in Italy were specifically designed to maximise views, allowing no obstructions from vertical or horizontal mullions, while two operable panels allow ample airflow. Creating five new cores incorporating the exit stairs and elevators eliminated the need for long corridors and allowed, for most of the floor through apartments, the ability to enjoy views of Manhattan from the living rooms and views of Brooklyn from the bedrooms, all at the same time. The converted water tower penthouse and the rooftop resident's lounge will have 360-degree views.

AA Studio worked in collaboration with MA Architects.

BIG U selected to receive \$335 million in "Rebuild By Design" Competition

The BIG Team is awarded \$335 million to increase resiliency in Lower Manhattan, protecting the city against future storm surges while providing social and environmental benefits to the local community.

New York, USA – The Secretary of U.S. Department of Housing and Urban Development, Shaun Donovan, NYC Mayor Bill de Blasio, Governor Andrew Cuomo, Senator Charles Schumer, and Zia Khan of the Rockefeller Foundation yesterday announced Big U, co-developed by BIG and Dutch One Architecture, as one of six winning solutions to protect U.S. cities from increasingly intense weather events. Founded in 2013 as a response to Hurricane Sandy's devastations, Rebuild by Design called for an innovative community- and policy-based solution to promote resilience in the Sandy-affected region. Big U is selected as one of the winners of the year-long competition among 10 multidisciplinary design teams and a total of 148 international applicants.

"The winning proposals are truly transformative and serve as blueprints for how we can safeguard the region and make it more environmentally and economically resilient," said Secretary Shaun Donovan.

Coined the 'Big U', the systematic approach encircles Manhattan responding directly to the needs and concerns of the area's communities. Running from West 57th Street south to The Battery and up to East 42nd Street, the Big U protects 10 continuous miles of low-lying geography that comprise an incredibly dense, vibrant, and vulnerable urban area. The team's approach is rooted in the two concepts of social infrastructure and hedonistic sustainability. The Big U not only shields the city against floods and storm water; it provides social and environmental benefits to the community, and fosters an improved public realm. The team envisions three compartments that function independently to provide flood protection. Each compartment comprises a physically discrete flood-protection zone that can be isolated from flooding in adjacent zones. At the same time, each presents opportunities for integrated social and community planning. The compartments work in unison to

protect and enhance the city, yet each compartment's proposal is designed to stand on its own.

"The Big U is an example of what we call Social Infrastructure. The High Line shows how a decommissioned piece of infrastructure – the abandoned elevated railway – can be transformed into a public space and green landscape. We asked ourselves: What if we could envision the resilience infrastructure for Lower Manhattan in a way that wouldn't be like a wall between the city and the water, but rather a string of pearls of social and environmental amenities tailored to their specific neighbourhoods, which also happens to shield their hinterlands from flooding. The Big U will not only make the waterfront more resilient but also more accessible and inviting to the citizens around it," said Bjarke Ingels, Founding Partner, BIG.

Proposed solutions for the components were designed in close consultation with the associated communities and a



Photo: © BIG Bjarke Ingels Group

number of local, municipal, State and Federal stakeholders; each proposal has a benefit-cost ratio greater than one; and each is flexible, easily phased, and able to integrate with existing projects in progress.

Matthijs Bouw, founder of co-lead One Architecture commented: "The Big U really shows the power of design in building coalitions. In an intensive process

with the community, the city and the housing authority we discovered how a well-designed flood protection system can have multiple benefits: housing preservation, improved urban spaces, and jobs. Sometimes people say about climate change that it is really a problem that is shared by everyone. In The Big U, we think that the benefits of investment

in protection against it should also be shared."

CDBG-DR funds will be used to implement the first phase of the proposal along the Lower East Side, creating a 'bridging berm' at the East River Park. The bridging berm provides robust vertical protection for the Lower East Side from future storm surge and rising sea levels. The berm also offers pleasant, accessible routes into the park, with many unprogrammed spots for resting, socialising, and enjoying views of the park and river. Both the berms and bridges will be wide and planted with a diverse selection of salt tolerant trees, shrubs, and perennials to create a resilient urban habitat.

The BIG TEAM includes BIG - Bjarke Ingels Group (architecture), One Architecture (water & urban planning), Starr Whitehouse (landscape architecture), James Lima Planning & Development (finance & economics), Green Shield Ecology (ecology), Buro Happold (engineering & sustainability), Level Infrastructure (engineering), Arcadis (hydrologic engineering), AEA Consulting (arts & cultural planning), Project Projects (graphic design), and the School of Constructed Environments at Parsons the New School for Design.

Wacker expands production capacity for dispersible polymer powders at its Burghausen site

Munich, Germany – Wacker Chemie AG is expanding its production capacity for dispersible polymer powders in Germany. The Munich-based chemical company is currently building a new spray dryer with an annual capacity of 50,000 metric tons at its Burghausen site, investing an amount of around €20 million. The facility is scheduled for completion in the first quarter of 2015 and will be one of the largest of its kind worldwide.

WACKER aims to meet the globally rising demand for dispersible polymer powders, which is driven by worldwide trends such as urbanisation, renovation and energy efficiency, as well as the increasing need for environmentally compatible dry-mix mortar products. With the planned production expansion, the Group is creating the necessary capacity to reliably meet the market growth predicted by industry experts in the long term.

"Worldwide, demand for high-quality dispersible polymer powders is rising particularly in residential construction and infrastructure measures," explained Arno von der Eltz, president of WACKER POLYMERS.

"We started to extend our dispersible polymer powder production at our Nanjing site at the end of last year and now want to push ahead with expanding our capacities in Burghausen, too – and thus strengthen our global position as a leading manufacturer of dispersible polymer powders."

WACKER has been producing dispersible polymer powders as binders for dry-mix mortars in Burghausen, Germany, since 1957 and, today, is a global technology and market leader in this field.



Wacker's production facility at the Burghausen site. Photo: © WACKER

Grimshaw to design national network of recreational sport facilities in Qatar

London, UK – Grimshaw has been selected to create a new range of community sports facilities across Qatar. Secured through a competition funded by the Qatar Olympic Committee, the Al Farjan Recreational Sports Facilities aim to create new enriched social spaces and encourage community participation in sporting activities.

The multipurpose sports facilities will be equipped with a variety of courts, pitches, outdoor children's playgrounds, public amenities, and social areas. These areas will serve as an informal space for young people, families, and sports enthusiasts to develop healthy lifestyles in the local community.

Set against the desert dunes, the concept design offers the highest standard of amenities for sports including football, volleyball, basketball, and handball, all within a welcoming environment. At the centre of the complex an elevated café acts as a vibrant social hub surrounded by the various courts and pitches. To mitigate the harsh desert climate, fabric canopies, visually reminiscent of the desert flowers native to Qatar, have been designed to provide shade and mark key routes to recreation and seating areas. Seating is nestled into the dune-scape to provide cosy places for families to



Photo: © Grimshaw

socialise and watch sporting events.

The environmental strategy for the facility includes active additions, incorporating shading canopies, and passive programming, using the rolling topography and change in level across the site to create focused sight lines and funnel cooling breezes through the site. The design also employs a grey water recycling system to help irrigate the landscape.

Grimshaw Partner Keith Brewis said, "We are delighted to know our design will create highly accessible informal public

space that enriches social activities while also developing athletic talent within the local community. This project provides an opportunity for Qatar to encourage all its residents to lead healthy lifestyles."

Designed as a kit of parts and deployable in arrangements of various sizes, the bespoke components can easily be adapted for the construction of future recreational facilities throughout Qatar. By embedding the playgrounds into the landscape, they will become truly integrated within their place.

International team wins competition for Vietnamese-German University

Bath, UK – British landscape architecture firm Grant Associates working with Boston architects Machado and Silvetti Associates, Inc. have won an international competition to design the Vietnamese-German University Campus in Binh Duong Province, Vietnam.

This is a unique collaboration between the World Bank, the Vietnam Ministry of Education and Training and the German Hessen State Ministry of Science and Art that aims to develop an



Photo: © MSA

internationally accredited higher education program for research and advancement for Vietnamese students and to build a campus for the new university.

Machado and Silvetti Associates will be responsible for the delivery of Phase 1, US\$121 million of the 50.5 hectare University Campus, whilst Grant Associates will mastermind the landscape strategy. Phase One of the project is due for completion in November 2017.

Grant Associates' landscape design proposal embraces the concept that a sustainable university campus should be a multi-layered and multifunctional landscape that becomes an active living classroom, as well as a tool for restoring and improving the environment. The landscape strategy establishes an extensive network of gateways, courtyards and green spaces that encourages outdoor learning and social interaction, interlinked by comfortable and engaging shaded routes.

Highlights of the landscape design include:

Native Tropical Woodland Perimeter

The planting of a native tropical woodland perimeter belt provides

a strong multifunctional edge to the campus. This brings shade and reduced air temperature; shelter for people and wildlife; a reduction of dust and noise; habitat creation for flora and fauna, as well as attractive shady routes for students to feel more connected to nature.

Sustainable Water Management

A sustainable water management is a central feature of the landscape design. A 'water treatment train' of storm water attenuation, cleansing and filtration allows water to be recycled within the site for irrigation and maintenance. It is embedded into the landscape providing attractive water gardens and channels.

Tree Lined Avenues in the University Commons

The core of the campus contains the key university buildings where the landscape approach will be more formal in character. Tree-lined avenues framing large open spaces create a grand setting to the architecture. The spaces are inspired by the urban grain of Ho Chi Minh District One with large tree-lined avenues and squares. These

spaces will remain flexible to provide opportunity for large outdoor performance and events.

Courtyard Gardens

The Courtyard Gardens are designed to be more individual in character, each identifying with the functions of their immediate surrounding buildings. They offer a series of articulated outdoor spaces for quiet seating and small study gatherings. The footpath network will offer a circulation that remains unrestricted yet intimate and sheltered. And a palette of hard and soft materials will be selected to keep these simple and distinctive whilst embracing the lush and sensory characteristic of tropical planting.

Andrew Grant, Director, Grant Associates said: "We are excited to be working with Machado and Silvetti Associates and Arup on the integrated design for this important Campus. The ideas are based around the creation of landscape spaces and connections with strong identity and which offer multiple benefits for learning, improved environmental quality and outdoor recreation."

The Interlace wins the inaugural CTBUH Urban Habitat Award

Chicago, USA – The Interlace, a residential tall building project in Singapore, has won the inaugural Urban Habitat award from the Council on Tall Buildings and Urban Habitat (CTBUH).

The Interlace is a 1,040-unit apartment complex consisting of 31 apartment blocks, each six storeys tall and 70 metres long, stacked in hexagonal arrangements around eight large-scale, permeable courtyards. The stacking of the volumes creates a topographical phenomenon more reminiscent of a landscape than of a typical building. An extensive network of communal gardens and spaces is interwoven with amenities, providing multiple opportunities for social interaction, leisure and recreation – both on the roofs of, and in between, these stacked horizontal blocks.

"The Interlace creatively realises the potential a tropical environment provides for inverting the 'towers in the park' typology in favour of the tower as park," said Awards Jury chair Jeanne Gang, founding principal of Studio Gang Architects. "By integrating horizontal and vertical living frameworks, it becomes much more than the sum of its parts."

The CTBUH Urban Habitat Award is newly established this year to recognise that the impact of tall buildings extends far beyond the buildings themselves. The award recognises significant contributions to the urban realm, in connection with tall buildings. In particular, it highlights projects that demonstrate a positive contribution to the surrounding environment, add to the social sustainability of both their immediate and wider settings, and represent design influenced by context, both environmentally and culturally.

"The Interlace is far beyond being just a worthy winner of the inaugural Urban Habitat award," said CTBUH Executive Director and 2014 awards juror Antony Wood. "It demonstrates dramatically the real opportunity tall buildings have for creating quality urban space at height, if we can only break down our preconception of designing skyscrapers as stand-alone, unconnected icons. It is no surprise that it is Singapore that has fostered a building such as this, given its recent history in connecting tall buildings with sky gardens at height. In The Interlace, we finally we see the intentions of the Japanese Metabolists come to fantastic effect."

The Awards Jury also recognised the considerable urban qualities of NEO Bankside, London, UK, in awarding it Finalist status in this inaugural year of the urban habitat award. Set in a rejuvenating area on the south bank of the Thames, this 217-unit residential project takes its cues from the surrounding context of Southwark, channeling its contemporary energy and past industrial heritage. Ground-level retail and landscaped groves guide the public through the site from the riverside into the neighbourhood.

All award winners will be recognised at the CTBUH 13th Annual Awards Symposium, which will take place at the Illinois Institute of Technology, Chicago, on 6 November 2014.



The Interlace in Singapore. Photo: © Iwan Baan

DORMA receives iF and Universal Design Awards

Ennepetal, Germany

– Following on from last year when DORMA received a number of major design honours, such as the Iconic Award or the German Design Award, further chapters are being added to the company's success story on this front as it moves through 2014. In fact, innovative DORMA products have garnered four international design awards within days of one another. The announcement of the iF design Awards and the Universal Design Awards has brought the company two successes from each awarding body.

In the conferral of the renowned iF product design awards, the ITS 96 FL integrated door closer received the coveted iF label. And the electronic door fitting XS Quattro was recognised with the highly prestigious iF gold award. From 3,249 product submissions, only 50 really special specimens were selected for honours. "This door fitting with its integral access control function has a particularly shallow, unobtrusive profile, despite offering all the features that, for example, might be expected in the hotel segment. Its size and the use of signal colors have been much reduced. The overall effect is therefore one of a product offering an impressively understated, high-precision design," was the judgment of the international jury of experts following scrutiny of the XS Quattro and its contenders on the basis of criteria such as innovative content, material selection and functionality.

"Design & Aesthetics are among our core brand values, so we are, of course, particularly delighted to receive such a renowned design award," commented Rainer Blank, Director Product & Design. And Mario Dreismann, Vice President Group Marketing & Sales, added: "For us good design is not regarded as an end in itself, however, but rather an element seen in association with technical innovation and, needless to say, high product quality. It is precisely this holistic approach that is recognised by the iF awards. So the accolade represents a particularly significant success in our view – one that inspires us going forward, confirming as it does our ability to successfully pursue and sensibly interweave our values."



The iF awards have been honouring design excellence since 1953 and represent one of the biggest and most important international design competitions. Hence the iF label. Granted by the International Design Forum, is a seal of quality recognised around the world.

DORMA was also successful in the universal design awards. Here again, the jury of experts singled out the ITS 96 FL. The consumer panel was also impressed by the integrated door closer, leading to DORMA also receiving the Universal Award in the Consumer Favorite category. Instituted to honour outstanding product design, services, architecture, systems and processes, the internationally aligned Universal Design Awards were first conferred in 2008. With the advent of barrier-free access as a megatrend, the 2014 Universal Design Awards highlighted for the first time the value of integrated systems offering a cogent combination of design and application aptitude, engineering excellence and aftermarket services, thus incorporating criteria far beyond the mere design credentials of the products and architectures submitted. The entrants were assigned scores for wide-ranging and flexible applicability, simple and intuitive operability, safety, security and error tolerance, interculturality and cost efficiency.

"The fact that it was actually the users who decided on where the consumer award should go is, of course, a real feather in our cap," said Dreismann. "We regularly survey our clients – that is to say B2B customers such as specifiers, planners and architects – but to get direct feedback like this from the people who actually use our solutions in the buildings is also very important – it makes the award all the more treasured in our eyes."

Awarded DORMA products

For both products, these latest awards are not the first honours to go their way. Both the XS Quattro fitting and the ITS 96 FL door closer have garnered the Iconic Award of the German Design Council, and the German Design Award.

The ITS 96 FL integrated door closer offers operational convenience combined with simple styling. Thanks to its EASY OPEN technology, the opening resistance is kept low enough to allow effortless



The ITS 96 FL



The XS Quattro

operation across the full age range of potential users. Rather than being automatically closed, the door remains freely operable, facilitating traffic flows, especially in heavily frequented areas. A self-powered lintel-mounted smoke detector reliably initiates safe closure in the event of symptoms of fire. And even after this, the door can continue to be opened to enable escape. As an integrated free-swing door closer, the ITS 96 FL is particularly suitable for barrier-free building and passive fire protection.

The XS Quattro product family encompasses a broad range of door fittings and locking cylinders, making the line exceptionally versatile. The XS Quattro design exhibits clearly defined, slender lines, with wireless installation ensuring a discrete appearance. As the shallowest product of its kind, the XS Quattro fitting is especially suited to prestigious builds. Despite its flat profile, this electronic door fitting with integral access control and card reader unites various functional attributes while also allowing space for all essential components. Now in an advanced state of development, the XS Quattro series is expected to be available on the market in the near future. In September it will be displayed for the first time at the Security trade show in Essen / Germany.

LSP 500 PRO from Sennheiser welcomes home World Cup champions

Wedemark, Germany – On 15 July 2014, the football world champions landed at Berlin's Tegel airport. They were given a rapturous welcome by the waiting fans and journalists.

At 10:08 precisely, the specially chartered Lufthansa Boeing 747 from Rio de Janeiro with the 23 German world champions on board touched down in Berlin. The triumphant national squad was given a rapturous reception by Tegel Airport staff, airline employees, journalists and hundreds of jubilant onlookers.

Eight Sennheiser LSP 500 PRO supplied by Bärلين Team operating on behalf of Berlin Airports ensured that the welcome address for the players could be clearly heard by all those present. Four LSP 500 PRO were located on the apron area and a further four were set up on



LSP 500 PRO from Sennheiser provided excellent sound at the welcome reception for the World Cup champions. Photo: © Dan Wittke

the visitors' terrace about 150 metres away. The signals were transmitted wirelessly via an integrated Sennheiser SR 300 IEM G3 transmitter to EM 300 G3 receivers in the LSP 500 PRO. Dan Wittke, Managing Partner of Bärلين Team Eventdesign GmbH, summed up: "Thanks to Sennheiser audio technology, the event was a huge success for all those involved."



LSP 500 PRO. Photo: © Sennheiser

Major order for A + W Software GmbH from Algeria

Cevital Group orders integrated system for glass and window manufacturing.

Pohlheim, Germany – Cevital has announced its decision to purchase a comprehensive A+W CANTOR ERP solution, including the A+W CANTOR dealer software. The high-tech glass production of the Oxoxo-plant will be equipped with a premium A+W Production system including the automatic optimizing and sorting system DynOpt. The contract has a total volume of one million Euros.

The Cevital group, founded in 2008, is a conglomerate with 12,000 employees in 18 branches. The glass division MFG is one of the largest flat glass corporations in Africa. Oxoxo is one of the leading window and glass manufacturers in France.

A + W CEO Dr. Uwe Schmid said: "We are glad that Cevital has opted for A + W software! A + W does not only offer holistic high-end solutions for the glass and window production, 'all of a piece'; as the global market leader, we have the experience and potential to professionally implement complex international projects of this magnitude."

The Oxoxo project is just the beginning of a long-term cooperation between Cevital and A+W: In the second step of the project, more Cevital / MFG production plants in France and Algeria will be equipped with A+W software in 2015.



From left to right: Khaled BOUALI, Directeur Général Oxoxo; Peter Dixen, A+W Vice President Sales and Marketing

Singapore Institute of Architects celebrates 53rd annual dinner

Singapore – The Singapore Institute of Architects (SIA) celebrated its 53rd annual dinner on 23 May 2014 with a prize presentation and announcement of its first Patron.

Held at the Sentosa Resort World Convention Centre, the annual dinner was attended by some 1,300 guests comprising of architects, building industry professionals, government officials, industry partners, guests and students. Mr Lee Yi Shyan, Senior Minister of State for Trade and Industry and National Development, was the Guest of Honour.

In his keynote speech, SIA President 2014/2015 Mr Theodore Chan shared key challenges facing the architectural fraternity in Singapore and outlined some solutions to overcome them. According to Mr Chan, the challenges included:

- Manpower
- Self-help productivity
- Diminishing fees vs increasing professional responsibility and service expectations
- Productivity and streamlining of the procurement and approval protocol
- Lowering business cost/B1 spaces/illegal practices

He also introduced the SIA Council 2014/2015 during the dinner.

First Patron of SIA

At the annual dinner, SIA conferred a Patron position on Dr Albert Hong. Dr Albert Hong is SIA's first patron because of his significant contributions to the profession in both Singapore and the region. He is currently the Chairman of RSP Architects Planners & Engineers. His career spans more than five decades. He has been at the forefront of shaping Singapore's built environment, creating many of Singapore's iconic buildings and landmarks. His bold vision, passion and perseverance has brought Singapore's brand of architecture abroad and left many imprints around the world.



Dr Albert Hong receiving the Patron position honour from Mr Theodore Chan.
Photo: © Singapore Institute of Architects

At home, Dr Hong has been instrumental in building up SIA in its earlier days. As SIA's Chairman of Board of Trustees since 1975 and as its President for three terms (1973-1976), his belief in SIA was so strong that he personally contributed to the development of the SIA Building Centre and was responsible for securing a loan to purchase SIA's premises at Neil Road. He even paid for the salaries of SIA's staff on many occasions. His experience as a university student in London working in factories and the post office has made him personally passionate about helping needy students pursue their education. His no-strings-attached donations and support of architectural education has nurtured many young architects today.

As the first Patron of SIA, Dr Hong will continue to support SIA and the profession's growth.

On the conferment, Dr Hong said: "I am privileged to accept this honour. The Singapore Institute of Architects has grown over the years to become a well-respected and highly regarded institution. Through its efforts, the Institute has significantly raised

the bar in promoting architectural excellence and inspired a deeper appreciation for good designs. I would like to encourage and inspire our architects to dream bigger, aim higher; to continue to create meaningful and outstanding designs that will enrich our lives and to give back to society."

Mr Theodore Chan added: "As our urban landscape evolves and we continue to enjoy our buildings and public spaces, we must not forget those who have worked behind the scenes to create lovely, beautiful designs that connect us to spaces and places. As we cross our 50th mark as an Institute, it is timely for us to honour and recognise our pioneer architects. It is apt that Dr Hong is our first Patron. He has inspired us as an architect, a businessman and an entrepreneur. He went beyond his profession to care for many around him and never gave up on building up the profession to what it is today."

SIA-Getz Architecture Prize

At the annual dinner, SIA also presented the SIA-Getz Architecture Prize to Co-Laureates, Sonali and Mani Rastogi from the architectural firm, Morphogenesis, India. Sonali and Mani Rastogi become the 5th recipients of the prestigious Award.



Mr Theodore Chan giving his keynote speech.
Photo: © Singapore Institute of Architects



The 2014 SIA-Getz Architecture Prize for Emergent Architecture in Asia was awarded to Co-Laureates, Sonali and Mani Rastogi from the architectural firm, Morphogenesis, India. Photo: © Singapore Institute of Architects



ArchXpo 2014

An International Exhibition of
Architecture & The Built Environment

A Part Of



29 September - 1 October 2014
Marina Bay Sands, Singapore
www.archxpo.com.sg

Join us in **ArchXpo 2014**, the newest addition to the celebrated Archifest series. Co-organised by the Singapore Institute of Architects and Conference & Exhibition Management Services Pte Ltd, this International Exhibition of Architecture & The Built Environment presents a professional industry component, in synergy with the Pavilion, Conference, Architours, Awards and various Fringe activities in Archifest.

ArchXpo 2014 will be the key showcase of technologies, products and services in the architectural and built environment industries.

EXHIBIT @ ArchXpo 2014 TODAY to:

- ✓ **Expand** your business network and explore new opportunities!
- ✓ Stay **updated** on industry trends and developments!
- ✓ **Maximise** your marketing and publicity efforts - stretch your advertising dollar with ArchXpo 2014's extensive advertising campaign!

2014 Event Projections

8,000sqm
gross exhibition area

270
Exhibitors

7,000
trade professionals & visitors

To exhibit, contact:



Conference & Exhibition
Management Services Pte. Ltd.

Email: AES@cms.com.sg

Tel: +65 6278 8666

Fax: +65 6278 4077

Co-Organisers



Strategic Partner



A Part Of



Concurrent Events



STAS Member Associations



Air-Conditioning and Refrigeration
Association of Singapore



Micro Builders
Association, Singapore



Security Systems
Association of Singapore



Singapore Building Materials
Suppliers Association



Singapore Electrical Contractors and
Licensed Electrical Workers Association



Singapore Electrical
Trade Association



Singapore Furniture
Industries Council



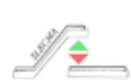
Singapore Glass Association



Singapore Plumbing
Society



Singapore Sanitary Ware
Importers & Exporters Association



The Singapore Lift & Escalator
Contractors & Manufacturers Association

BCA Awards Ceremony 2014 launches rebranding roadmap for the built environment in Singapore



Signing of MoU between BCA and CIJC. Photo: © BCA

Singapore – The Building and Construction Authority (BCA) held its annual BCA Award Ceremony on 22 May 2014 at Resorts World Sentosa. Mr Lee Yi Shyan, Senior Minister of State for National Development, and Trade & Industry, was the Guest of Honour at the award ceremony.

In his speech, Mr Lee launched a 5-year “B.E The Sector of Choice” rebranding roadmap for the built environment sector, which is aimed at attracting and retaining more local talent in the built environment sector.

“Singapore’s built environment sector is well regarded internationally. To sustain the high standard into the future, against our own achievements and improving

international benchmarks, we must have a highly skilled and motivated workforce to take on larger challenges. To be successful, we also need to adopt best-in-class HR practices. For the built environment sector, our current pipeline of projects is strong but the best years are still ahead of us,” said Mr Lee.

Also present at the ceremony was BCA Chairman Mr Quek See Tiat. In his welcome address, Mr Quek called for practical solutions to manage safety risks, as well as identify opportunities for using new construction methods and improving productivity. He announced the introduction of a new award category, the Green Facilities Manager of the

Year, to recognise facility management professionals who have shown strong commitment and contribution towards greening and optimizing the operation of existing buildings.

Rebranding roadmap

The roadmap was formulated by the Ministry of National Development (MND) and the Building and Construction Authority (BCA), in consultation with industry associations and institutes of higher learning (IHLs) in Singapore.

To transform the built environment sector, the roadmap looks at improving the work environment and enhancing human resource practices in firms. In addition,



Guest of Honour Mr Lee Yi Shyan. Photo: © BCA



Mr Quek See Tiat. Photo: © BCA

targeted outreach to females, teachers and students are aimed at generating greater awareness of built environment careers and attraction to the sector.

These new initiatives are on top of BCA's existing efforts to attract local talent, which include student competitions and career fairs, scholarship, sponsorship and apprenticeship programmes for students and job seekers.

At the BCA Awards ceremony, the BCA and the Construction Industry Joint Committee (CIJC) comprising key industry representatives had signed a Memorandum of Understanding to show the industry's commitment towards transforming the built environment sector into a workplace of choice.

Under a voluntary pledge signing initiative, built environment firms including developers, architecture and engineering consultancies and builders who sign the pledge, will commit to adopting good human resource practices. These include the adoption of proper performance management and training programmes as well as enhanced staff benefits, performance-based remuneration and a formal awards programme to recognise individual or group efforts at work.

The BCA will also develop a good practice guide to assist built environment firms in improving their human resource practices. The guide will feature best practices adopted by industry stakeholders as well as available assistance schemes for firms to tap on for the development of their human resource competencies.

Creating a conducive work environment, especially in the area of pro-family arrangements, also plays a key role in attracting and retaining females in the sector. Currently, females make up about 25 percent of the local workforce in the built environment sector.

The BCA will also implement a Teachers' Attachment Programme (TAP) to help teachers keep abreast with the latest developments in the built environment sector, to provide better career guidance to students. Teachers will be exposed through attachments to built environment firms, site visits and networking opportunities with industry stakeholders. The TAP will also be customised to the teachers' areas of discipline.

The pilot phase of the TAP will be conducted for Institutes of Technical Education (ITE) lecturers teaching built environment courses starting this year. It will be rolled out gradually, for teachers at polytechnics and Junior Colleges.

Lastly, to enhance students' learning and help students gain a better understanding of built environment careers, structured internships will be introduced for polytechnic and university students in built environment courses. The BCA will be developing guidelines for firms to enhance the learning value of internships for students, in consultation with industry stakeholders and tertiary institutions. Such guidelines will help firms focus on delivering the desired learning outcomes, as well as establish a recommended internship allowance and incorporate value-adding training as part of the students' internship.

12 individuals receive BCA-SGBC Green Building Individual Awards

Twelve outstanding individuals in the built environment sector received the prestigious BCA-SGBC Green Building Individual Awards at the BCA Awards 2014. The BCA-SGBC Green Building Individual Award accords recognition to individuals from across the building and construction value chain for their consistent contribution and outstanding achievements in driving sustainability in the built environment.

In line with the national push towards effective and efficient management of green buildings, a new category – Green Facilities Manager of the Year – was introduced this year to recognise facility management professionals who have shown strong commitment and contribution towards greening and optimising the operation of existing buildings. The two winners of this new category are:

Green Facilities Manager of the Year

1. Mr Anthony Goh, Senior Vice President of Property and Facilities Management, City Developments Limited (CDL)



Anthony Goh. Photo: © BCA



Lim Tow Fok. Photo: © BCA

2. Mr Lim Tow Fok, General Manager, Keppel Land International Limited

The other winners of the BCA-SGBC Green Building Individual Awards are:

Green Advocate of the Year

3. Mr Vincent Low, Vice-President, G-Energy Global Pte Ltd

Green Architect of the Year

4. Mr Alan Tan, Senior Principal Architect, Housing and Development Board



Vincent Low. Photo: © BCA



Alan Tan. Photo: © BCA

Green Architect of the Year

5. Mr Tan Shao Yen, Managing Director, CPG Consultants



Green Engineer of the Year

6. Er. Patrick Foong, Managing Director, e2green Pte Ltd



Green Innovator of the Year

7. Dr Sujit Ghosh, Chief Executive Officer, Holcim Limited



Young Green Advocate of the Year

8. Mr Jason Pomeroy, Principal, Pomeroy Studio

Green Building Individual Commendation Award

9. Dr Ng Khee Yang, Managing Director, Eco-Applications

10. Er. Lee Boon Woei, Director (Environmentally Sustainable Design), DP Architects



11. Er. Richard Phua, Associate Director, Squire Mech Pte Ltd

12. Mr Martin Gui, Managing Director, Facility Link Pte Ltd

“Congratulating the winners, Dr John Keung, BCA’s Chief Executive Officer said: “The awards will raise the profile of capable professionals and practitioners in the built environment sector. This year, we have a record of 12 award recipients who impressed us with their passion and contribution in creating a sustainable built environment for Singapore. As outstanding industry practitioners, they will serve as role models for our younger generation and hopefully inspire them to join this sector and do their part in greening the built environment.”

“On green facilities and asset management, Dr Keung said: “Facilities and asset management functions are increasingly positioned at the forefront of business strategy today in many large and international corporations. Based on our study, Green Mark buildings can be at least 25 percent more energy efficient than non-Green-Mark buildings. Good facilities management will be critical to ensure that buildings continue to be energy efficient during their entire life span so that the building owner can derive savings from it and users can live and work in healthier buildings. The demand for competent green facilities managers will be further fuelled by an increase in urban population and green buildings as we move towards green growth.”

Emirates Green Building Council is now a Participant of the United Nations Global Compact

Dubai, UAE – Emirates Green Building Council (EmiratesGBC), an independent forum aimed at conserving the environment by strengthening and promoting green building practices, has been formally accepted as a participant of the United Nations Global Compact, a strategic policy initiative that aligns the operations of members with ten universally accepted principles including environmental sustainability.



Saeed Al Abbar, Chairman of EmiratesGBC

EmiratesGBC is currently one of only two Business Association participants of the UN Global Compact from the UAE. The UN Global Compact participants include UN agencies, labour organisations, civil society, academic, public sector and cities. The UAE has over 50 participants including the city of Dubai.

With nearly 12,000 business and non-business participants in 140 countries, the UN Global Compact is the largest voluntary corporate responsibility initiative in the world. It sets a practical framework for the development, implementation and disclosure of sustainability policies and practices, and offers the participants a wide spectrum of workstreams, management tools and resources — all designed to help advance sustainable business models and markets.

Saeed Al Abbar, Chairman of EmiratesGBC, said the addition of the Council as a participant of the UN Global Compact is a strong testament to the role it plays in promoting environmental sustainability. “Through our participation, we can support our stakeholders in the building industry supply chain to further adapt global best practices to conserve our natural resources and promote environmental sustainability.”

He added: “The induction of EmiratesGBC to the UN Global Compact will further lend momentum to our activities to promote green building practices, as it opens doors to an array of resources including the UN’s knowledge and experience with sustainability, in addition to providing opportunities for information exchange with global experts. It will also enable us to set up an established and globally recognised policy framework for the development, implementation, and disclosure of environmental, social, and governance policies and practices.”

The UN Global Compact works toward a sustainable and inclusive global economy, which delivers lasting benefits to people, communities, and markets, while promoting the spirit of volunteerism. As a Participant, EmiratesGBC will adhere to the principles laid down by the UN Global Compact as well as

submit an annual posting of the ‘Communication on Progress’ document, a public disclosure to stakeholders on progress made in implementing the ten principles of the UN Global Compact, and in supporting broader UN development goals.

The 10 principles laid out by the UN Global Compact are derived from the Universal Declaration of Human Rights, the International Labour Organisation’s Declaration on Fundamental Principles and Rights at Work, the Rio Declaration on Environment and Development and the United Nations Convention Against Corruption. They cover four key areas including human rights, labour, environment and anti-corruption. The environmental principles are that businesses should support a precautionary approach to environmental challenges, undertake initiatives to promote greater environmental responsibility and encourage the development and diffusion of environmentally friendly technologies.

EmiratesGBC regularly hosts and participates in multinational events, conferences and forums, and has developed a suite of activities, inclusive of networking events, technical workshops, focus days and facilitated training based around specific issues related to the built-environment that meet the needs of its members, of the UAE community, and the wider Middle East.

Do you have Green Building Council news for us?

Good!

Email us at seab@tradelinkmedia.com.sg



1-3 Sept 2014

International Green Building Conference 2014

Marina Bay Sands, Singapore
Tel: +65 6780 4658
Email: igbc@reedexpo.com.sg
Website: www.sgbw.com.sg

3-5 Sept 2014

IFSEC Southeast Asia 2014

Kuala Lumpur Convention Centre
Kuala Lumpur, Malaysia
Tel: +60 3 2176 8788
Fax: +60 3 2164 8786
Email: Rina.Fadzil@ubm.com
Website: www.ifsecsea.com

10-12 Sept 2014

CAMBUILD'14

Diamond Island Convention & Exhibition Centre
Phnom Penh, Cambodia
Tel: +855 23 210 806
Fax: +855 23 217 290
Email: richard@ambexpo.com / veasna@ambexpo.com
Website: www.exposcambodia.com

29 Sept – 1 Oct 2014

ArchXpo 2014

Marina Bay Sands, Singapore
Tel: +65 6278 8666
Fax: +65 6278 4077
Email: aes@cems.com.sg
Website: www.archxpo.com.sg

29 Sept – 1 Oct 2014

iFAME 2014

Marina Bay Sands, Singapore
Tel: +65 6278 8666
Fax: +65 6278 4077
Email: chloe@cems.com.sg
Website: www.ifame.com.sg

15-17 Oct 2014

Concrete Show South East Asia 2014

Jakarta International Expo
Jakarta, Indonesia
Tel: +62 21 729 2662
Fax: +62 21 729 3539
Email: niekke.budiman@ubm.com
Website: www.concreteshowseasia.com

28-30 Oct 2014

HVACR Indonesia 2014

Jakarta International Expo
Jakarta, Indonesia
Tel: +65 6411 7777
Fax: +65 6411 7778
Email: hvacrpsindonesia@informa.com
Website: http://hvacrseries.com/indonesia

5-8 Nov 2014

PhilConstruct 2014

SMX Convention Center & World Trade Center
Manila, Philippines
Tel: +63 2 750 8588
Fax: +63 2 750 8585
Email: info@globalinkmp.com

12-14 Nov 2014

EcoLightTech Asia 2014

Plenary Hall, Queen Sirikit National Convention Center
Bangkok, Thailand
Tel: +66 2 203 4260-62
Fax: +66 2 203 4250-1
Email: ecolight@Qsncc.com
Website: www.ecolight-tech.com

26-28 Nov 2014

10th International Hotel Expo 2014

Cotai Strip R Cotai Expo™
(The Venetian Macao)
Macao
Tel: (+852) 2827 6766
Fax: (+852) 2827 6870
Email: general@coastal.com.hk
Website: www.hotel-exhibition.com

9-11 Dec 2014

MYANBUILD 2014

Tatmadaw Hall, Yangon
Myanmar
Tel: +60 3 4041 9889
Fax: +60 3 2770 5301
Email: nadia@ambexpo.com
Website: www.myanbuild.net

3-6 Feb 2015

World of Concrete 2015

Las Vegas Convention Center
Las Vegas, USA
Tel: +1 972 536 6379
Email: jjames@hanleywood.com

10-12 Feb 2015

Integrated Systems Europe 2015

Amsterdam RAI
Amsterdam, Netherlands
Tel: +31 20 240 2424
Fax: +31 20 240 2425
Email: office@iseurope.org
Website: www.iseurope.org

11-15 Mar 2015

WORLDBEX 2015

World Trade Center Metro Manila (WTCMM), the WTCMM East Wing and the Philippine Trade Training Center (PTTC)
Manila, Philippines
Tel: +63 2 531 6350 / 531 6374
Fax: +63 2 533 2026
Email: info@worldbex.com
Website: www.worldbex.com

27-29 March 2015

CONSTECH 2015

Hall 7-8 IMPACT Exhibition & Convention Center
Bangkok, Thailand
Tel: +66 2 833 5208
Fax: +66 2 833 5127-9
Email: pasinc@impact.co.th
Website: www.Thailandconstech.com

9-12 Jun 2015

Guangzhou International Lighting Exhibition 2015

China Import and Export Fair Complex
Guangzhou, China
Tel: +852 2238 9969
Fax: +852 2598 8771
Email: light@china.messefrankfurt.com
Website: www.light.messefrankfurt.com.cn



MYANBUILD'14

MYANMAR INTERNATIONAL BUILDING & CONSTRUCTION INDUSTRY SHOW

4-6 DECEMBER 2014 • MYANMAR EVENT PARK, YANGON

MYANMAR'S BIGGEST INT'L BUILDING AND CONSTRUCTION INDUSTRY EXHIBITION & CONFERENCE

4-6 DECEMBER 2014
MYANMAR EVENT PARK, YANGON

**NEW
DATES & VENUE**

**4-6 DEC 2014
MYANMAR EVENT
PARK, YANGON**

A good platform for Nippon Paint to promote branding and expand our business in Myanmar.

Henry Ang
Nippon Paint (Singapore) Pte Ltd

The organizer managed to put up a good show as it attracted a lot of valuable trade visitors related to the industry.

Marco Ramahu
Peri Asia Pte Ltd

The exhibition exudes professional atmosphere with good quality of visitors. Great combination of companies from construction, energy and water industries

Christian Jacobi
Ammann Schweizag

www.myanbuild.net

To Book Your Booth at the Expo, contact:
Ms. Suraya at suraya@ambexpo.com
Mr. Darren at darren@ambexpo.com

To visit the Expo,
Pre-register online at: www.myanbuild.net

Organised by:



AMB EVENTS SDN. BHD.
Suite 1701 (17th Floor) Plaza Permata,
No. 6 Jalan Kampar, Off Jalan Tun Razak,
50400 Kuala Lumpur.
Tel: 603 4041 9889 Fax: 603 2770 5301

AGC supplies all glass for Arena Corinthians

New stadium featuring glass façade, balustrade, lounges hosted the opening match of 2014 FIFA World Cup Brazil™.



Photo: © Amadeu de Carvalho

AGC, a world-leading supplier of glass, chemicals, ceramics and other high-tech materials and components, was the sole-source supplier of all glass components for the construction of Arena Corinthians. Located in Sao Paulo, Brazil, the football stadium features a design heavily accented by glass, extra-clear glass selected for its aesthetic qualities and deployed in the façades, balustrades and VIP lounges. The glass-studded stadium hosted the opening match of the 2014 FIFA World Cup Brazil™.

AGC was selected as an official supplier of the stadium upon favourable evaluation of Planibel Clearvision, a specialty float glass that provides exceptional clarity through minimal impurities. Low iron content allows objects to be viewed naturally in their original colour and to

maintain an optimal colour rendering when painted.

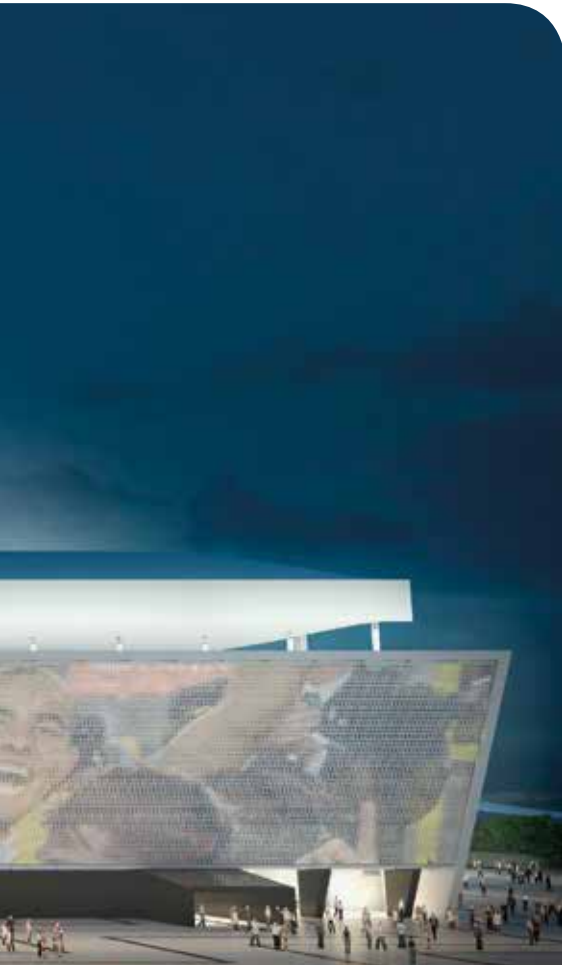
"We selected AGC's Planibel Clearvision for its excellent transparency, quality and colour stability, in addition to its reliable supply," said Anibal Coutinho, chief architect of Arena Corinthians. "As the home stadium of the Sport Club Corinthians Paulista, Arena Corinthians needs to incorporate the team's colours, which are black and white. Following several tests, we determined that Planibel Clearvision was the ideal glass material for this historic architectural project for its rendering of purely white colours."

"Planibel Clearvision is the perfect choice for glass fittings at Arena Corinthians," said Davide Cappellino, President of AGC Glass Brazil. "Planibel Clearvision's wider architectural applications include interior

partitions, building façades, shop fronts and museum displays, while industrial applications include lighting and solar cell covers, furniture and shower screens."

Arena Corinthians is the 11th largest stadium in Brazil, with a seating capacity of 48,234. Newly constructed by Odebrecht and featuring an original, modern look, the stadium is scheduled to host six 2014 FIFA World Cup Brazil™ matches, including the opening game. The stadium's East façade, incorporating AGC's Planibel Clearvision glass, is the world's largest video screen, measuring 170 metres in length and 20 metres in height. A total of 72,000 square metres of glass weighing 1,500 tons is used for the façades, balustrades and VIP lounges.

For more information, visit www.agc-group.com.



Section	Technical specifications
Façades	AGC's Planibel Clearvision is incorporated in the East and West façades. The West façade (6,900 square metres) is made of 1,080 pieces of various types of glass, including tempered, laminated, silkscreen-printed and double-curved glass. The façade's curvature evokes the image of a ball hitting the back of the net. The East façade is covered by 1,300 1.2-metres-long glass plates, and is the world's largest video screen with a total surface area of 3,400 square metres.
VIP Lounges	The VIP lounges are covered in approximately 17,000 square metres of Planibel Clearvision glass with a thickness of 6-12mm. Tempered, laminated and silkscreen-printed Planibel Clearvision glass offers enhanced comfort to the occupants by allowing through an optimal amount of sunlight.
Balustrades	Approximately 22,000 square metres of Planibel Clearvision glass is utilised for the balustrades.



Photo: © Amadeu de Carvalho

Singapore Safety Glass helps package a solution for Greenhub



Singapore Safety Glass Pte Ltd (SSG) has remodelled glass innovation with their newest offering, a dual-action eco-active glass dubbed Self-Cleaning VariShield. The product was recently used at the Greenhub factory in Singapore.

Self-Cleaning VariShield is an eco-active glass that self-tints and self-cleans through daylight and rainwater. An original idea combining thermochromic, photocatalytic and hydrophilic properties, it is an intuitive and self-sufficient design that is completely weather-activated without bothersome operable systems. The glass darkens its tint according to sunlight intensity, actively ensuring optimal lighting conditions and minimal heat transfer at different times of the day. We can then rely less on continuous artificial lighting for indoor illumination, and load less on our air-conditioning system for a comfortable indoor temperature. The ultraviolet light present in sunlight is also used to photocatalyse organic dirt on the glass, so that the dirt can be washed away by rainwater in neat sheets, leaving no dirty spots or streaks after the water evaporates.

Making its appearance for the first time in Malaysia, SSG took ARCHIDEX as a platform to launch the eco-active glass officially, alongside its entry into ARCHIDEX New Product Award 2014. SSG expects Self-Cleaning VariShield to perform the role of a holistic daylighting tool and an integral building material for eco buildings, saving cleaning agents, water, energy and resources for maintenance.

Self-Cleaning VariShield was specified in Greenhub factory in Singapore. Greenhub is owned by Greenpac, a company providing effective and environmentally friendly packaging solutions in Singapore.

Product Features of Self-Cleaning VariShield

Energy conservation

This thermal efficient glass let light in, but not excessive glare or heat. Hence, high light transmission coupled with solar heat gain control helps us to conserve energy by reducing electricity consumption.



Maintenance savings

While cleaning is still required, it is minimal. The glass stays clean longer and allows easier cleaning when needed. It results in less use of cleaning agents and water while allowing continuous clear view of exterior scenery, without dirty spots or streaks.

Intuitive & self-sufficient design

Completely weather-activated design without bothersome mechanical or electrical operable systems. Works hands-free and indefinitely using free and unlimited supply of sunlight and rainwater. No re-treating needed as properties are inherent of the glass.

Environmentally friendly product

Self-Cleaning VariShield is a revolutionary eco-friendly solution that glass can offer. The dual-action of self-tint and self-clean allows you to leave it to the intelligence of the glass to save cleaning agents, water, energy and resources in maintenance. This put building owners and occupants in the best position for maximum cost savings and showcase of a greener corporate outlook.

Application and usage

Self-Cleaning VariShield is free of wiring, allowing you to install as per normal glass. It is best used for east-west facing residential windows, commercial façades, and as skylights for foyers and bridges.

For further information, visit www.ssg.com.sg.



THE 20TH PHILIPPINE WORLD
BUILDING & CONSTRUCTION EXPOSITION



WORLD**BEX**



MARCH 11-15

Building

Visions

in the Realm of ASEAN Integration

2015

**World Trade Center Metro Manila | WTCMM East Wing A & B
Philippine Trade Training Center**

SHOW HOURS : 10:00AM - 8:00PM

ORGANIZED BY

WORLD BEX SERVICES INTERNATIONAL

#WORLD BEX20

+632 656 9239 info.worldbex@gmail.com www.worldbex.com

INTERIOR

Retail



In the showroom of MAX&Co. boutique in Milan new wooden floors were laid and finished with Mapei products such as ULTRABOND ECO S945 1K, SILWOOD, ULTRACOAT HIGH TRAFFIC and ULTRACOAT PREMIUM BASE.



MAX&Co. Showroom

A new look for the brand's showroom in the centre of Milan.

An all-Italian, international brand recognized as the forerunner in pret-à-porter, the Max Mara Group is Italy's leading clothing company, founded in 1951 with the intention of offering top-of-the-range ladies' clothing made using unrivalled industrial manufacturing processes.

A leading position that the Group has consolidated over the years thanks to its rigorous style, obtaining public recognition that is clearly demonstrated through its 2,300 boutiques located in various countries.

The first boutique to carry the Max Mara name was opened in Reggio Emilia (Central Italy) in 1964, the first of a network of boutiques that can now be found in the most important cities in Italy and around the world.

One of the brand's outlets has been lately completely renovated, and included the laying of wooden flooring using products from the Mapei range. The boutique is in Milan in Corso Vittorio Emanuele II, just a few steps from the Duomo square and the Vittorio Emanuele Arcade (see Realtà Mapei International n. 41 for a detailed report of the renovation works in this arcade).

A Rapid, High-quality Laying Wooden Floors

The client and the designer wanted to lay industrial oak flooring in a herringbone pattern on all three floors of the boutique, for a total surface area of 500 square metres.

Another firm request of the client was to lay and finish off the flooring as quickly as possible so that they could open the

boutique during the winter. To meet the requirements of the client, the company contracted to laying the flooring contacted Mapei Technical Services Department, who recommended the most appropriate adhesives and finishing products. The first step was to clean, sand and then dust off the substrate.

The solid wood flooring was then bonded in place (14 mm thick industrial wooden flooring), and the choice of the client in this case was oak. To lay the flooring, Mapei recommended using ULTRABONDECO S945 1K one-component, isocyanate and solvent-free, sililated polymer-based adhesive for bonding pre-finished, multi-layered wooden floors, with very low emission level of VOC, Volatile Organic Compounds (EMICODE EC1-R Plus Certified).



Three days after laying the wooden floor was sanded, after which it was then possible to apply ULTRACOAT PREMIUM BASE two-component water-based, NMP-free, undercoat with high insulating capacity, very low emission level of VOC.

The next step was to varnish the floor with ULTRACOAT HIGH TRAFFIC, two-component, NMP-free, 100 percent polyurethane water-based varnish with high resistance to wear and abrasion and very low emission level of VOC for wooden floors. It is suitable for floors subject to extremely high pedestrian use. SILWOOD acrylic sealant in its oak shade was used to seal perimeter joints.

Article source: *Realtà Mapei International* no. 44/2013

For further information, e-mail mapei@mapei.com.sg.

Mapei Products

Laying Wooden Floors:

Ultrabond ECO S945 1K

Finishing Wooden Floors:

Silwood, Ultracoat High Traffic, Ultracoat Premium Base.



ULTRABOND ECO S945 1K

PROJECT DATA

Project: MAX&Co. Showroom, Milan (Italy)

Period of Construction: 2009-2010

Year of Intervention: 2012

Intervention by Mapei: supplying products to laying and finish wooden floorings

Client: Maxima

Works Direction: Giuseppe Randazzo

Building Site Direction: Kibea Parquet, Sassuolo (MO)

Laying Company: Matteo Magri, Kibea Parquet

Laid Materials: oak wooden floors

Mapei Distributor: Munarini Srl

Mapei Co-ordinators: Alessandro Bonacini, Carlo Rossi and Carlo Alberto Rossi, Mapei SpA (Italy)

SOUTHEAST ASIA'S LONGEST-RUNNING CONSTRUCTION SHOW

PHILCONSTRUCT 2014

25th Philippine International Construction Equipment, Building Materials, Interior and Exterior Products Exhibition and Technology Forum

NOVEMBER 5-8

**SMX Convention Center
& World Trade Center
Manila, Philippines**

Incorporating:

HVAC/R
PHILIPPINES 2014

MINING
ASIA 2014

MAKE YOUR BUSINESS STAND OUT



**19 countries
represented**



**1,100+ participating
companies**



**64,000+ trade
visitors**



**USD 102.5M worth
of on-site sales**

Organized by:



Philconstruct Events,
Exhibitions & Conferences
Corporation

Co-Organized by:



Association of
Carriers & Equipment
Lessors, Inc.



Philippine
Constructors
Association, Inc.



Philippine Society of
Ventilating,
Air-conditioning, and
Refrigerating
Engineers, Inc.

Event Managed by:



Global-Link Exhibitions
Specialist Inc.

For more information, please contact:

GLOBAL-LINK EXHIBITIONS SPECIALIST INC.



(632) 750-8588



(632) 750-8585



info@globalinkmp.com / hvacr@globalinkmp.com

Interested visitors may pre-register at: www.globalinkmp.com

Fluidity and Crystal complete spectacular water feature at Egypt's Cairo Festival City.



Crystal – A Clear Choice for Cairo Festival City

A striking modern water feature has been completed in the heart of Egypt's Cairo Festival City, the new mixed use urban community, owned and developed by Al-Futtaim Real Estate Group which spans over 3 million square metres and is located at the gateway to New Cairo City, the newly built satellite city, east of Cairo.

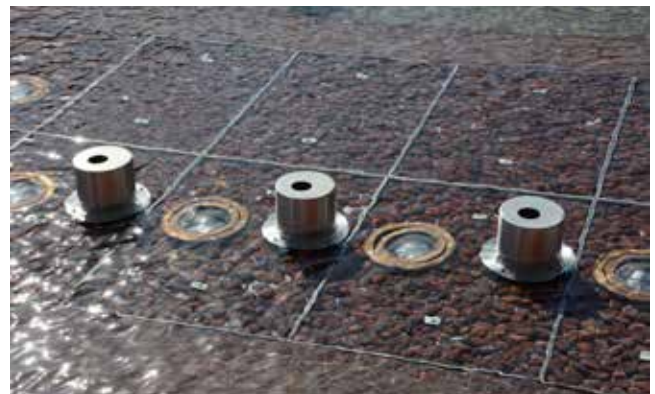
The fountain was conceived by renowned water feature design studio Fluidity, with equipment being provided by Crystal, the world leader in water feature technology. Crystal has been responsible for various projects, including the Taipei 101 in Taipei. The animated fountain at Cairo Festival City puts on stunning theatrical shows of water and light, which can be programmed with music to entertain the public.

Located in the centre of Cairo Festival City, the fountain is the city's main focal point. It is surrounded by a horseshoe shape of two-storey retail pavilions that have coffee shops, cafes and restaurants on ground floor level, with outside, landscaped seating areas where visitors can enjoy watching the fountain.

Directly opposite the retail pavilions is an open air theatre, with the water feature being the main stage. Amphitheatre seating looks down onto the fountain, providing a perfect place for the public to relax and become immersed in the fountain's inspiring shows. A key objective was for the water feature to differentiate Cairo Festival City's retail offer from other competing schemes, as well as providing an exciting "heart" for the overall mixed use project.

Crystal provided hundreds of LED Lights and 27 Custom Plume jets. The fountain also features 42 of Crystal's custom-developed Titan Jets, which shoot water 25 metres into the air for memorable effects, as well as creating arches that change their shape and height. The LED Lights also ensure there are spectacular shows at night that work in conjunction with music.

Jim Garland, president of Fluidity commented: "In a country that is famous for its ancient construction wonders, we wanted to deliver something truly special. The water feature is circled by seating areas, meaning it can be viewed from a 360 degree angle. It therefore had to look spectacular from all angles - a simple front and back view was not an option. This saw us use various 3D models





All photos courtesy of Crystal

and structures during the design process to understand how the fountain would be seen from all viewpoints. Usually so called 'dancing' fountains simply connect with the beat of the music. However, this water feature is different in that it really visualises the music's melody and has much more rhythm in how the water and lighting effects engage with the music," continued Garland.

Zeyad El Beshry, general development manager at Al-Futtaim Real Estate Group said: "We wanted an exciting water feature that would essentially brand Cairo Festival City as a memorable destination, and generally increase footfall in the retail area. The fountain has succeeded in doing this, and adds another dimension to the overall development - its popularity is demonstrated by the crowds it draws."

"Every fortnight, promotional events such as fashion shows are held in the external theatre, with the water feature providing the perfect dramatic backdrop. We are already programming the fountain to create 25 new musical water and light shows. The reason the fountain has turned out to be so impressive is due to the excellent collaboration between all members of the project team when designing and constructing the fountain," continued El Beshry.

Paul L'Heureux CEO of Crystal said: "The water feature was a significant part of Al-Futtaim Group's master plan. We are pleased to have played an important part in delivering the project, and to

have installed some of our most innovative new equipment such as the Titan jets. Crystal also facilitated the project's construction process, which was enabled by our significant working experience in the Middle East."

"It was a pleasure working with Fluidity and Al-Futtaim Group, and we look forward to doing so again in the future. Aquacare, the specialist MEP contractor, was also instrumental in delivering the project. They played an important role as the installation contractor, assisting in the overall construction management of the water feature," continued L'Heureux.

Cairo Festival City sets new standards as Egypt's premier indoor-outdoor shopping, dining and entertainment destination, providing spectacular residential villas and luxurious apartments, as well as prime office spaces, together with internationally renowned hotels, education and automotive showrooms all set within a beautifully landscaped and tranquil environment. Combining lifestyle and landscape, the many parks, gardens, walkways and plazas bring together the districts to enhance and create gatherings for family and friends as an addition to Cairo Festival City amenities. It is a truly distinctive lifestyle experience where meticulous attention to detail is clear and all elements of the project are seamlessly interconnected.

For more information on Crystal, visit www.crystalfountains.com.

Sika scores Singapore Sports Hub project

Located close to the centre of the city and connected up to the public transport network, the new Singapore Sports Hub will become Singapore's principal sports and leisure facility. Singapore Sports Hub will not only host world-class sporting events, it will also be a dynamic lifestyle destination with facilities for use throughout the year. It will be open to the public and will house world-class events, including sports competitions, concerts, exhibitions, conventions, etc.

The new Sports Hub will include the following facilities:

- A new 55,000-capacity National Stadium with a retractable roof and comfort cooling for spectators;
- A 3,000-capacity indoor OCBC Aquatic Centre complete with leisure facilities, expandable to 6,000-capacity for specific events that meets world tournament standards;
- A 3,000-capacity OCBC Arena, a multi-purpose indoor sports hall which will be scalable, modular and flexible in layout;
- A Water Sports Centre to enhance sports offerings in the Kallang Basin
- 41,000 square metres of commercial space for leisure, shopping and dining activities
- A sports information and resource centre, comprising the Sports Hub Library, Singapore Sports Museum and Visitor Centre
- Sports Promenade and Community Facilities
- The existing 12,000-capacity Singapore Indoor Stadium featuring an exciting line-up of vibrant entertainment

Project Requirements

As part of the development of the Singapore Sports Hub facility at Kallang, the applicator Craft Facade Private Limited, was awarded the fixed roof cladding package. In the package, the company specified and installed Sika® Sarnafil® G476-10 for the following two facilities – the OCBC Arena and the OCBC Aquatic Centre.

- The OCBC Arena (North and South building) is a 3,000 seat scalable multi-purpose indoor arena with standing seam aluminium roof and integrated smoke vents. Completely modular, it will be suitable for gymnastics as well as for racket, shooting and combat sports.
- The OCBC Aquatic Centre is a 3,000 seat indoor Aquatic Centre complete with leisure facilities, expandable to 6,000 for specific events that meets world tournament standards. The OCBC Aquatic Centre has been designed not only for swimming tournaments and training but also as a recreational swimming facility available to the general public.

Sika® Sarnafil® G476-10 was successful to be introduced as the primary waterproofing layer below both the aluminium standing seam roof and feature recessed aluminium cladding panels. Sika was able to ensure watertightness to the above roof areas as well as provide solution to the scupper area including the termination requirements.

Project Solutions

Due to the complexity of the roof for Multi-Purpose Indoor Arena (North and South building) and Aquatic Centre, Craft Facade utilised a unitised roof system so that the majority of the works can be completed at ground level with all roof units assembled and lifted into position once complete. The waterproofing membrane was loosely laid over insulation and then mechanically fastened with ST Clips over it. Finally, it was covered with the 1mm thick Kalzip Aluminium Standing seam.

For more information, contact Felix Tan at tel (+65) 67772811, email tan.felix@sg.sika.com or visit www.sika.com.sg.





New Singapore Sports Hub. Photo: © DP Architects



Photos showing application of the Sika® Sarnafil® G476-10. Photos: © SIKA

For once on the ceiling

In the new Gurmels gym, the Webnet by Jakob AG covers the ceiling



The Webnet, a flexible net structure made of stainless steel rope and metal sleeves, is one of the best-known and most successful products developed by Jakob AG. The venerable company is based in the Swiss town of Trubschachen and known around the world as a leading manufacturer of wire ropes. Time and again in the past years, Jakob has succeeded in expanding the range of applications for nets – not least in cooperation with architects. The latest example is a gym in Gurmels. *Text by Mathias Remmele, Basel, Switzerland*

The Webnet is one of those products that appear so simple and straightforward that it seems to have existed forever: high-quality stainless steel ropes permanently interconnected by simple metal sleeves that make it possible to design wide- or fine-meshed net structures depending on the requirements of the specific application. But the fact is: the net pioneered by Jakob AG was launched only four years ago. The remarkable success of the Webnet on the market originates from many different factors. A special advantage in this context is its flexibility and the broad range of applications that is continuously being expanded because the user's imagination is the only limiting factor. The Webnet is suitable for protective and securing functions – for example on bridges and in sports facilities. It serves as a fence – for example on the roofs of buildings or as balustrades in staircases. But it can also be used for attachment and perimeter design purposes, and as a training structure for climber plants.

While the excellent weather resistance of the Webnet makes it an optimal solution for outdoor applications, its functional benefits and its unobtrusive yet very upscale appearance makes it an ideal choice for indoor purposes as well. Another factor determines the Webnet's broad range of application: the net can be stretched not only over surfaces but also assumes three-dimensional forms. The Webnet can be

implemented in the form of simple geometrical shapes such as funnels, cylinders, and spheres, but complex, irregular three-dimensional shapes are also possible. An interesting application of the net that nicely illustrates this quality was implemented at "Knie's Children's Zoo" in Rapperswil. Here, like at many other places around the globe, the Webnet provides a convincing solution thanks to its functionality, durability, easy assembly, and not least its attractive yet unobtrusive filigreed appearance.

The recently finished gym in Gurmels in the Swiss canton of Fribourg, designed by the architectural team Jean-Luc Grobéty, André Bächler & Alain Fidanza, Jürg Winkelmann, delivers further impressive proof of the Webnet's versatility. In this gym, which can be subdivided into three units and is used as a venue for school and club sports as well as cultural events, the Webnet is used as an important functional and aesthetic element of interior design. Secured to the gym ceiling





and to the upper portion of a longitudinal wall, it serves as a protective barrier to prevent damage to the lighting integrated into the wooden ceiling structure and to the sports equipment suspended from the ceiling. At the same time, it provides an unobtrusive but clearly visible aesthetic element that visually separates the gym's interior from the overhead structure.

The incentive to use the Webnet in Gurmels originated with the architects who were seeking a functional and attractive alternative to the conventional dropped ceiling solutions. In close cooperation with the engineers and technicians at Jakob AG, they developed a customised solution for the gym. Planning revolved around two key factors: on the one hand, the choice of mesh aperture and mesh angle which were important for the interior appearance of the net, and on the other hand, the development of an aesthetically and functionally optimized system for attaching the net within the given architectural constellation of the building.

For aesthetic reasons, the architects in Gurmels opted for a relatively small mesh angle of 35° to emphasise the visual effect of the filigreed structure. For attaching the net, they chose a surround rope that is in turn connected to the structure of the building via retainers, the so-called primary construction. This consists of a number of standard elements as well as single parts individually adapted to the given structural situation. Despite their considerable own weight, it was possible to tension

the approximately 500 square metres large net segments very tightly, resulting in a minimal, virtually imperceptible sag of 10-15 cm.

The factory-assembled nets were installed by Jakob AG specialists using only a few auxiliary ropes and two mobile scissor platforms. Because installation is quick and requires no expensive scaffolding, the builder benefits from the Webnet's considerable cost advantages compared to conventional ceiling installations. Hence, Webnet applications as the one completed in Gurmels will certainly attract a following in the near future.

For more information, visit www.jakob.com.



PROJECT DATA

Project: Gurmels Gym

Owner: Gemeindeverband der OS Region Gurmels

Architect: André Bächler / Alain Fidanza

Stainless steel nets: Jakob AG

Photographs: Photography, Brigitte Batt & Klemens Huber, Fräschels / Switzerland



A vertical garden at the Tree House condominium in Singapore has entered the Guinness World Records as the largest vertical garden in the world. Developed by City Developments Limited, one of Singapore's leading green developers, the stunning vertical garden is 24 storeys high and covers an area of 2,289 square metres. In every sense, the Tree House is a sight to behold with its eye-catching façade.

Photos: © City Developments Limited

Tree House

Home to the world's largest vertical garden

Nestled within the Upper Bukit Timah and Chestnut Avenue private residential estate, the Tree House condominium has become one of the most prominent buildings in the estate since its completion in 2013. It comprises of four 24-storey towers with 429 units.

Designed with environmental sustainability in mind, Tree House's vertical garden is more than just a unique architectural structure. A natural insulation, the vertical garden reduces the estate's carbon footprint by filtering pollutants and carbon dioxide out of the air. It reduces heat absorption and lowers the energy needed to cool indoor spaces. This is expected to achieve air-conditioning energy savings of between 15 percent and 30 percent, or a total of approximately between S\$12,000 and S\$24,000 annually for the 48 west-facing master bedrooms that are insulated by the vertical wall.

Commenting on the project, Mr Tang Kok Thye, Associate Partner, ADDP Architects LLP said: "Tree House is a well-positioned, eco-inspired condominium in a tranquil estate close to nature. The vertical garden was conceptualised to create a green icon for the Chestnut residential area. Beyond its stunning architecture, the vertical garden would bring benefits including filtering pollutants and carbon dioxide out of the air, reducing heat absorption and





lowering energy needed to cool indoor spaces. This is expected to achieve air-conditioning energy savings of between 15 percent and 30 percent for the west-facing units insulated by the vertical garden. Inspired by the condominium's surrounding greenery, the vertical garden was fabricated using a vertical galvanised mild steel frame, and planted with *Thunbergia Grandiflora* as well as *Bauhinia Kockiana*. We worked with COEN Design International Pte Ltd (landscape consultant) and Scenic Landscape Pte Ltd (landscape sub-contractor) to create this green icon. The vertical garden was designed for ease of maintenance, and received the 'Special Award - Best Design for Maintenance' at the National Parks Board's Skyrise Greenery Awards in 2013."

Other green features at Tree House include the use of heat-reducing laminated green tinted windows, lifts with Variable Voltage and Variable Frequency motor drive and sleep mode programming and motion sensors at staircases that will activate lights automatically. Tree House's various green features are expected to result in energy

savings of over 2,400,000 kWh per year and water savings of 30,000 cubic metres per year, or approximately over S\$500,000 annually.

CDL invests 2 percent to 5 percent of a new development's construction cost in eco-friendly features and sustainable construction technologies. The first and only developer to be conferred the pinnacle BCA Green Mark Platinum Champion since the award was introduced in 2011 and the first to receive the BCA Built Environment Leadership Platinum Award in 2009, CDL has continued to drive green innovations and methods that enhance construction excellence, productivity, and environmental sustainability.

In addition to having entered Guinness World Records, Tree House received top honours in the 'Best Innovative Green Building' category at the MIPIM Asia Awards 2013, which honours outstanding real estate projects in Asia Pacific. Tree House was also conferred the Green Mark Platinum award by the Building and Construction Authority in 2010 and 'Special Award - Best Design for Maintenance' at the National Parks Board's Skyrise Greenery Awards in 2013.

Tree House

GREEN FEATURES

BENEFITS

Designed for Energy Efficiency

- Installation of energy efficient inverter air-conditioning (with 4 Green Ticks Energy Label) and gas heaters for all apartments
- Use of heat-reducing laminated green tinted windows
- Provision of lifts with Variable Voltage and Variable Frequency motor drive and sleep mode programming
- Provision of motion sensors at staircases that will activate lights automatically
- Use of T5 and LED lighting for common areas, lobbies and car parks

- Enjoy energy savings from the energy efficient air-conditioners
- Helps to reduce external heat gain

Designed for Water Efficiency

- Installation of water efficient sanitary fixtures and fittings (with Water Efficiency Labelling Scheme) such as tap fittings, shower mixers and water closets
- Use of water sub-meters to monitor water usage for key common areas
- Rainwater harvesting system for irrigation of landscape

- Achieve water savings
- Monitors water usage to detect to help reduce water wastage

Designed for Good Indoor Environmental Quality and Environmental Protection

- Construction of green walls (that are extended to the west facades) that will act as bio-shading devices
- Use of low formaldehyde adhesive for woodworks such as wardrobes, doors and kitchen cabinets
- Use of low VOC paints for all internal walls and ceilings

- Serves to cool the environment and reduces the estate's carbon footprints by filtering pollutants and CO₂ from the air
- Improves air quality

Design Innovation and Other Green Features

- Dual-chute pneumatic waste collection system (for the segregation of domestic and recyclable waste)
- Takes advantage of the natural sloped terrain of the site by introducing "bio-swales" that aids in the collection of rainwater for landscape irrigation purposes to filter and collect rain water for recycling
- Construction of green sky gardens at 7th, 13th and 19th-storeys of each block to create a fresh and healthy living space

- Encourages recycling to protect the environment
- Treats surface runoff water through cleansing and filtration of pollutants before being used for other purposes

