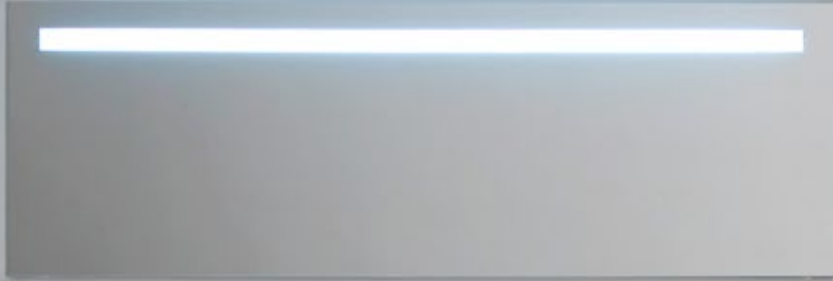


Oct - Dec 2014

bathroom + kitchen **today**



UNDER THE HOOD

Technology in the Bathroom




KITCHEN SPACES

Top Kitchen Trends of 2014

EXCLUSIVE INTERVIEWS

*Cosentino
Delta Faucet
Laufen*



Scan this code &
'Like' us on 

www.kaldewei.com

KALDEWEI

Europe's No.1 for baths

MEISTERSTÜCK

Fully enamelled, exquisite and seamless.



interior
innovation
award
2014

Best of Best



German
Design Award

SPECIAL
MENTION 2013

Freestanding design with a touch of elegance.

Created by Master Touch in high-quality KALDEWEI 3.5mm steel enamel backed
with 30 year warranty

MEISTERSTÜCK CENTRO DUO OVAL

KALDEWEI South East Asia Pte Ltd - Tel: +65 6899 2487 - Email: info@kaldewei.sg
Flagship store: KHK Asia Pte Ltd - 120 Delta Road #01-08 - Cendex Centre - Singapore 169208 - Tel: +65 377 3285

Select your Shower Pleasure.

Raindance® Select.

Rinse out shampoo with a strong Rain spray, relax under soft RainAir drops, or a massage with the concentrated whirl spray. All you have to do is choose your favourite spray on the Raindance Select E 120 hand shower by clicking the "Select" button.

www.hansgrohe.com.sg/select



Hansgrohe Pte Ltd · 69 Mohamed Sultan Road · Singapore 239015
Tel: 65 6884 5060 · Fax: 65 6884 5071 · Website: www.hansgrohe.com.sg
Email: info@hansgrohe.com.sg

Regional Contacts:

Hong Kong · Tel: 852 3752 1898 · **Indonesia** · Tel: 6221 2965 9930
Malaysia · Tel: 603 2096 9581/9582 · **Philippines** · Tel: 632 689-7158
South Korea · Tel: 82 2 2061 1900 · **Taiwan** · Tel: 886 2 2570 1820
Thailand · Tel: 66 2 610 3102 · **Vietnam** · Tel: 84 8 3520 7635



Also available with EcoSmart
technology: saving water
and energy.

Press releases, proposals for stories, and product development literature should be submitted by email to the editor at:

bathroom@tradelinkmedia.com.sg
kitchen@tradelinkmedia.com.sg



Cover designed by Siti Nur Aishah

On the cover: **ILBAGNOALESSI One** by Roca Singapore
www.laufen.com

Disclaimer

All advertisers and contributors must ensure all promotional materials and editorial information submitted for all our publications, must be **free from any infringement on patent rights and copyrights laws in every jurisdiction**. Failure of which, they must be fully liable and accountable for all legal consequences (if any) that may rise.

The editor reserves all rights to exclude or refuse submissions at any time without prior written or verbal notice if contributing parties do not provide complete text and supporting images at a minimum of 300 dpi in .tif format.

The editor reserves all rights to omit and amend press releases submitted for publication. Both publisher and editor are unable to accept any liability for errors or omissions that may occur in this process, although every effort has been taken to ensure that all information is correct at the time of going to press. Edited press releases, articles or stories are returned to contributors for check on facts at the sole discretion of the editor. No portion of this publication may be reproduced in whole or part without written permission of the publisher.

PUBLISHER
Steven Ooi
steven.ooi@tradelinkmedia.com.sg

EDITOR
Francesca Carrillo
bathroom@tradelinkmedia.com.sg

GROUP MARKETING MANAGER
Eric Ooi
eric.ooi@tradelinkmedia.com.sg

MARKETING MANAGER
Felix Ooi
felix.ooi@tradelinkmedia.com.sg

MARKETING EXECUTIVE
Theng Wong
theng@tradelinkmedia.com.sg

HEAD OF GRAPHIC DEPT/ADVERTISEMENT COORDINATOR
Fawzeeah Yamin

GRAPHIC DESIGNER
Siti Nur Aishah

CIRCULATIONS
Yvonne Ooi

bathroom + kitchen today is published **four** times a year by:
Trade Link Media Pte Ltd
(RCB Regis. No. 199204277k),
101 Lorong 23, Geylang
#06-04 Prosper House,
Singapore 388399

T: 65-6842-2580, F: 65-6842-2581/65-6745-9517
E: bathroom@tradelinkmedia.com.sg
E: kitchen@tradelinkmedia.com.sg
W: www.tradelinkmedia.com.sg

INTERNATIONAL SALES OFFICES

[FRANCE]

A.P. Watt International Publisher's Representative
6, Rue Des Acacias,
91810 Vert-Le-Grand, France
T: 33-1-6456-0015; F: 33-1-6456-0863

[ITALY/SWITZERLAND]

Arch. Aldo Cacchioli Publistein di Galli Cacchioli & Co.
Via Ciseri 5, 6600 Locarno, Switzerland
T: 41-91-751-6910; F: 41-91-751-7109

[JAPAN]

T. Asoshina/Shizuka Kondo ECHO Japan Corporation Grande Maison,
Rm 303, 2-2, Kudan-Kita,
1-Chome, Chiyoda-ku, Tokyo 102, Japan
T: 81-3-3263-5065; F: 81-3-3234-2064

[KOREA]

MCI
Rm. 103-1011, Brown Stone, 1330,
Baeseok-dong, Goyang-si, Gyunggi-do,
Korea 410-907
T: +82 2 730 1234 F: +82 2 732 8899

This publication is available at no charge to subscribers from industries related to the bathroom who meet the publication's terms of control. For subscribers who do not qualify for free subscription, copies will be made available, subject to acceptance by the publisher, for a subscription fee which varies according to the country of residence in the following manner:

Annual Subscriptions
Europe / America - S\$100,
Japan, Australia, New Zealand, Middle East - \$100
Asia Pacific - S\$65,
Malaysia / Brunei - S\$50,
Surface mail: Singapore - S\$22 (Incl 7% GST Reg No.: M2-0108708-2)

Please fax your enquiries to
+65 6842 2581 or +65 6745 9517 or call +65 68422580

Printed in Singapore by:
KHL Printing Co Pte Ltd MICA (P) No: 042/02/2014
ISSN 2345-7120 (Print) and ISSN 2345-7139 (E-periodical)

The following titles are also published by us:
Southeast Asia Building • Southeast Asia Construction • Security Solutions Today • Lighting Today

AOSmith.

No. 1 Water Heater in USA



HEAT PUMP WATER HEATERS

USE FREE ENERGY FROM THE AIR!

65 + 35 = 100

AIR HEAT ELECTRICITY HOT WATER



Contents

EDITOR'S NOTE	006
GLOBAL NEWS	008
GREEN NEWS	032
PRODUCT SPECIAL <i>Living the Edge</i>	035
PROJECT FOCUS <i>DC Towers</i> <i>Stockholm Grand Hôtel</i> <i>Changi Airport</i>	038
SURFACES <i>Tiles in Fashion</i> <i>Collections</i>	047
INSIGHT WITH COSENTINO	064
BATHROOM SPACES <i>Under the Hood</i> <i>Collections</i> <i>For the Bathroom</i>	067
INSIGHT WITH LAUFEN	096
INSIGHT WITH DELTA FAUCET	100
KITCHEN SPACES <i>Contemporary Leaps past Transitional</i> <i>State Blend and Trend</i> <i>Collections</i> <i>For the Kitchen</i>	103
CALENDAR OF EVENTS	128



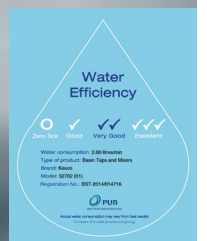
COVER STORIES

068 Under the Hood
104 Contemporary Leaps Past
Transitional

COLLECTION MOLL

Gently rounded corners and lines combined with linear forms shape the face of the fittings and accessories of KEUCO's COLLECTION MOLL.

The formal and the organic merge into one. The unobtrusive, sleek design gives the collection a lightless and timeless beauty that bears the signature of Reiner Moll of .molldesign Germany.



Model: 52702 Wels 2 TICK, 2.6 L/min. BST-2014/014716



Dear Readers

According to the National Kitchen & Bath Association (NKBA), contemporary still reigns supreme when it comes to popular bathroom and kitchen styles in 2014. Clean, simple lines, having less clutter and minimalist ornamentation seems to be the predominant trend among users.

Curious to see what else is trending? Go ahead and flip to our kitchen stories to see the ins and outs of the kitchen industry. In "Contemporary Leaps Past Transitional", we explore NKBA's 2014 Design Trends Survey, and GE explains why slate is the new black in "Slate Finish Appliances Blend and Trend".

Good and clean lines don't necessarily equate to Spartan simplicity. Under the hood of aesthetics, modern technology is always constantly at work. Flip to our bathroom story "Under the Hood" to keep up with the latest product showcases by notable bathroom manufacturers. Not just constricted to the bathroom, kitchen appliances and components are also angling for technology integration under sleek hoods and profiles.

Hungry for more? Turn to our "Living the Edge" special product section to see what else is new.

Our surface story "Tiles in Fashion" meanwhile, shines a spotlight on a restoration projection of a Latin Pop Icon's California-Style Spanish Colonial home. Complementing this, we also have a slew of iconic project showcases which will pique your interest.

We also have the pleasure of interviewing notable industry heavyweights such as Cosentino, Delta Faucet and Laufen to keep us up to date with the latest concepts and innovations.

With that, I leave you to kick back and enjoy this issue. Happy reading!

A handwritten signature in black ink that reads "Francesca Carrillo". The signature is fluid and cursive.

Francesca Carrillo
Editor



Do not miss our Duravit + Geberit & Hansgrohe Package!



hansgrohe

AXOR
hansgrohe

GEBERIT

BRAVAT
BY BRUNNEN



Kale

inspirione

ART CERAM



ECONFLO SYSTEMS PTE LTD

263/265 Beach Road Singapore 199544
Tel: +65 6396 3738 Fax: +65 6396 3736
Email: sales@econflo.com Website: www.econflo.com

A. O. SMITH INTRODUCES NEW WATER HEATER RANGE



In its biggest product launch of the year, leading water heater manufacturer A. O. Smith is introducing their digital energy saving water heater range.

The new digital design is the latest advancement for storage water heaters in Singapore. A. O. Smith's new digital panels allow users to control their water heater's thermostat for the first time among other functions, increasing energy efficiency and dramatically lowering operating costs.

When the company first introduced the horizontal storage water heater to the market in 1994, it was a game changer. Horizontal water heaters set the standard for residential water heating today.

Innovation continues to lead A. O. Smith's efforts twenty years

later with the introduction of a new energy saving range of water heating and renewable energy systems. Digital water heating is an achievement in product design that delivers energy efficient solutions and provides customers with invaluable savings to their wallets.

A. O. Smith Corporation, which is celebrating its 140th anniversary this year, is a leading global manufacturer and marketer of residential and commercial water heaters. A. O. Smith offers its customers an additional competitive advantage in that the company designs, builds, distributes and field supports the world's broadest and deepest line of residential and commercial water heaters and boilers.

For more information, visit www.hotwater.com.

SILESTONE, REVOLUTIONISES ARCHITECTURE AND DESIGN INDUSTRY WITH WIDE RANGE OF APPLICATIONS

Cosentino Group, global leader in the production and distribution of innovative surfaces for the world of architecture and design, is proud to present Silestone, an innovative quartz surface made with cutting-edge technology to complement contemporary designs in every space.

Silestone is produced with advanced technology, through an industrial process that uses more than 90 per cent quartz, as well as crystal, glass and polyester resin. The manufacturing process is extremely environmentally-friendly, as zero particles are emitted into the atmosphere during the manufacturing system and 98 per cent of the water is reused in the process.



Silestone® Authentic Life

Kitchen & Bathroom Surfaces

Each element that surrounds us contributes to build our reality.
That's the authentic existence, the existence that defines who you are.

Silestone® lets you express character and emotion through your kitchen and bathroom. The only quartz worktop with bacteriostatic protection, and available in over 80 varied stunning colours and three exclusive textures.

Live the authentic life, live your life with Silestone®.



*"I love architecture and fashion,
but the authentic things are in the houses we live,
in the clothes real people wear.
That's what I tell people on my blog.
That is Authentic life."*

Macarena Gea
(Blogger and Architect)



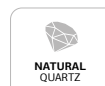
New Silestone®
NEBULA CODE
Silestone's most
Natural Appearance

Worktop & Integrity Sink PULSAR NEBULA CODE SERIES

www.silestone.com



Reject all Imitations.
Choose Silestone.
The Original Quartz



NEW COSENTINO CITY SHOWROOM IN SINGAPORE: C 34/35 Duxton Road / 089499 Singapore / csea@cosentino.com / Tel: +65 6713 9543 / Fax: +65 6222 6432

Silestone at Home

From classical concepts to modern kitchens, there are over 60 colours and three different Silestone finishes to choose from, namely polished, suede (matt) and volcano (rustic). The unique physical-mechanical and hygienic characteristics of Silestone such as its resistance to stains, scratching and strong knocks, as well as its bacteriostatic properties makes it ideal for work areas such as the kitchen worktop.

Other applications at home include Integrity by Cosentino, which is a line of Silestone one-piece kitchen sinks. These sinks have all the traditional features and benefits of Silestone such as its durability, high resistance to scratching, stains and acidic wear-and-tear in the house.

The Silestone Bath Collection reinvents the bathroom space thanks to the custom-made large-format concept. Silestone® can create an entire bathroom in a single material, giving the space more integration and smoother continuity of its elements. The large size of the pieces means that minimal number of joints is required, providing more visual continuity and increased hygiene standards. The collection also includes a range of wash basins and shower trays that provide a refined aesthetic on top of its functional benefits.

Silestone Around the World

Silestone is featured in notable projects including the El Prat Airport

(Barcelona, Spain), Brussels Airport (Belgium), Ben Gurion Airport (Tel Aviv, Israel), Olympic City Apartments (Vancouver, Canada), AVE Madrid-Valencia (Spain) and Hotel Burj Al Arab (Dubai).

Other projects include Hotel Casa Camper (Berlin, Germany), Hotel Lloyd (Amsterdam, the Netherlands), Bauhaus Museum (Dessau, Germany), Namibia Parliament (Windhoek, Namibia), Telefónica Showroom (Madrid, Spain), Agbar Tower (Barcelona, Spain), Wembley Stadium (London, UK) and Olympia Stadium (Berlin, Germany).

Silestone and the New Cuisine Era

Silestone has made significant contributions as well to the culinary industry. Silestone was chosen to be used in the "Basque Culinary Centre" at the Gastronomic Sciences University, an initiative that became an international benchmark in the world of haute cuisine.

Silestone has also been chosen by top chefs such as Karlos Arguiñano, where he works with a Silestone worktop and an Integrity sink on a television programme on Antena 3 TV. In Italy, Simone Rugiati, a young and ambitious chef, cooks on a Silestone worktop on the programme "Io, me e Simone" on Gambero Rosso TV. In the United Kingdom, chef Mike Robinson uses Silestone worktops on ITV's Countrywise Kitchen.

For more information, visit www.cosentinogroup.net and www.silestone.com.

INTERNATIONAL RED DOT JURY HONOURS THE AXOR SHOWERPIPE WITH THE "BEST OF THE BEST"

Hansgrohe SE, the bathroom and sanitation specialist from the Black Forest, Axor, the designer brand of Hansgrohe SE, and the Swedish design trio Front have won the internationally coveted "red dot" Award with a "Best of the Best" distinction.

"A 'Best of the Best' distinction", says Philippe Grohe, "is still something very special for Axor as a designer brand. It is an important and internationally renowned recognition of our efforts in the field of product design and in the design of the bathroom as a living space. It also affirms our strategy of focusing on functionality in addition to the formal and emotional quality of bathroom mixers."

In addition to the "Best of the Best" distinction for the Axor ShowerPipe, the jury of international design experts awarded the Axor ShowerProducts by Front with the "red dot" 2014. The same distinction for high design quality and ground-breaking design was given to the Axor LampShower by Nendo, the Hansgrohe Shower Select concealed thermostats, the Hansgrohe Raindance Select S 240 overhead shower, the Hansgrohe Metris kitchen mixer with a pull-out handspray, and the Hansgrohe Logis series of washbasin mixers.

In addition to design, the 40 members of the jury assessed innovation, functionality, ergonomics and ecological compatibility of the submitted products in Essen, Germany.

Top-Design from Sweden and Comfort for the Shower

The new Axor ShowerPipe designed by Front allows users to experience water pathways in their most original form.

"With our design we wanted to draw attention to the hidden aesthetics of technology in a particularly elegant way, turning pipes, joints, valves and funnels into a charming design object," explains Charlotte von der Lancken from Front.

Not only was the design embraced by the jury, but also the comfortable handling and intuitive usage

"By referring to traditional technical forms, the Axor ShowerPipe by Front creates something new, which is fascinating. The clear lines of the shower underline the way that water naturally flows and thereby demonstrates a 'back to basics' feeling. The comfortable handling of the well-engineered applications offers the user an intensive showering experience. The precise attention to detail makes the Axor ShowerPipe by Front very convincing", said the jury.

International design from the Black Forest

A total of 4,815 products from 1,816 manufacturers in 53 countries were submitted, but only 72 had the honor of receiving the highest distinction – "Best of the Best". Top marks for design is a Hansgrohe tradition: for many years, design awards have been finding their



HEART MADE. HAND FINISHED.

Created with Swiss precision and high quality demands.
Combined with the love for detail, exceptional bathroom concepts come to life:
LAUFEN Palomba Collection 2012, design by L+R Palomba

LAUFEN

Bathroom Culture since 1892  www.laufen.com

Roca Bathroom Products Singapore Pte Ltd (1995038422)
8 Burn Road #12-07 Trivex, Singapore 369977
Tel: +65 6333 4080 Fax: +65 6636 7476 www.sg.roca.com



Photo Credits: red dot design awards

way into the Black Forest – the home of this successful global player in the sanitation industry. The company has already won more than 400 awards thanks to the extensive collaboration with many well-known designers and architects.

About Hansgrohe

The Hansgrohe company is based in Schiltach in Germany's Black Forest. In its 113-year history, it has acquired a reputation as a leading innovator in technology, design and sustainability in the sanitation sector. The mixers, showerheads and shower systems created by Hansgrohe SE are original products that make bathrooms more functional, more comfortable and more aesthetically pleasing.

These quality products can be found in such prestigious venues as the luxury ocean liner Queen Mary II, London Heathrow Airport Terminal 5, the Burj Khalifa in Dubai (the world's tallest building), the German Chancellery in Berlin, New York's Yoo luxury residences and



the Masdar City Institute of Science and Technology in Abu Dhabi.

The company and its products have been honoured with numerous awards, most recently the Red Dot "Best of the Best" Award for product design, the Architects' Darling Award 2013 in the Sanitary Fittings category and the 2013 Successful Design Awards China. In 2013, the company's brands Axor, Hansgrohe, Pharo and Pontos generated more than EUR 841 million in sales (compared to EUR 805 million in 2012).

Today the Hansgrohe Group employs more than 3,500 people worldwide, about one-third of whom work outside Germany. The company, which has a zero tolerance policy on counterfeit products and design infringements, manufactures its products in six German plants, as well as in France, the Netherlands, the USA and China.

For more information, visit www.hansgrohe.com.sg.

SIEGER LAUNCHES NEW WEBSITE AND ONLINE SHOP

Products and collections by Sieger can be discovered in all its detail on a new website. Whether it's individual fashion, small leather goods, rugs or the finest porcelain, visitors can find out more about the manifold collections and the way the products are manufactured.

As part of the relaunch, the German premium brand has also introduced an integrated fashion online shop.

As a growing premium brand, taking an active step into the e-commerce business seems to be a logical consequence for Sieger. Customers can find a comprehensive selection of high-quality ties, pockettes, belts, socks and even cufflinks in the new online shop. Current seasonal highlights are integrated alongside all-year-round collections. Elements of the current 2014/15 autumn/winter collection, "Excalibur", will be available online as of August.

By entering e-commerce, Sieger is making use of an additional channel in order to reach even more customer groups and further increase brand recognition. The new distribution channel complements the existing business model, in which the brand relies on close partnership with domestic and international retailers.



"To experience Sieger in person, we still recommend visiting our committed specialist retail partners on their premises," explains Christian Sieger, CEO and Marketing Director. "There, customers receive expert advice and can experience our products up close."

For more information, visit www.sieger-germany.com.



Living in Luxury Comfort

The art of perfection

*In life's ever changing demands, a place of serenity can never be compromised.
JohnsonSuisse manufactures and design quality bathroom products that are superior
in functionality and classic in aesthetic appeal.*

JohnsonSuisse
Bathroom Solutions

Roca Bathroom Products Singapore Pte Ltd (formerly known as Johnson Suisse (S) Pte Ltd)
8 Burn Road #12-07 Trivex, Singapore 369977. Tel: +65 6333 4080 Fax: +65 6636 7476

Channel Partners

Carera Bathroom Pte Ltd 26 Tai Seng Street #01-02/03, Singapore 534057. Tel: +65 6533 0455
Hong Soon Hardware Pte Ltd 301 Jalan Besar #01-01, Singapore 208962. Tel: +65 6296 7100

SwissWerkz(S) Pte Ltd 33 Ubi Avenue 3 #01-33 Vertex, Singapore 408868. Tel: +65 6659 2533
Sin Yew Lian Hardware Pte Ltd Blk 1048 Eunos Avenue 6 #01-149, Singapore 409627. Tel: +65 6844 1920



TEAM 7 UNVEILS NEW FLAGSHIP STORE IN BEIJING

Team 7's first store in China officially opened its doors in July. The Austrian furniture manufacturer is now able to showcase the company's classic designs and bestsellers from its kitchen, dining room, living room and bedroom ranges across the 300 m² showroom in Beijing.

Team 7's Managing Director Dr Georg Emprechtinger, flagship store proprietor Liu Dong and the Austrian envoy to Beijing Ms Regina Figl were in attendance at the grand opening to welcome the press. Notable guests from the industry and political field were also in attendance.

"The guests were wowed by our furniture and the in-store presentation," said Emprechtinger. "It just goes to show that entering the Chinese market was a viable financial step, and that here too, there is a growing interest in healthy living ideals and premium quality products."

For some years now, Team 7's push towards internationalisation has been met with success.

"Tapping into new markets and inspiring lots of people around the world with natural wood furniture is not just a financial goal for the company. It also reflects our business ideals," added Emprechtinger.



As one of the notable experts in the field of designer furniture made from natural wood, Team 7 has chosen an exclusive retail complex in Chaoyang as the location for its flagship store. Chaoyang is a popular area with the second highest population in the city. The complex is exclusively home to premium kitchenware and furniture manufacturers from Europe.

By showcasing its inspirational living environments in this location, Team 7 is looking to bring a touch of healthy living to the city. Team 7 once again demonstrates that it is possible to create a well-designed and sophisticated living space. A space that features first-class designer furniture made from natural wood, a material which is in complete harmony with nature.

For more information, visit www.team7.at.

GE INTRODUCES NEW MICRO-KITCHEN CONCEPTS

Simplifying, downsizing or the less-is-more movement has millions of users seeking smaller living quarters. According to the U.S. Census Bureau, the urban population in the U.S. grew 12 per cent from 2000 to 2010, totaling 81 per cent of the population.

As cities grapple with housing shortages, the trend toward smaller living spaces is already a reality. Shrinking living spaces necessitate products and services that simplify, optimize and economize. GE (NYSE:GE) Appliances' new micro-kitchen concepts keep consumers living large in a drastically smaller footprint.

"As we watch what's happening in the U.S., there's a clear trend toward smaller, more efficient living spaces," said Lou Lenzi, director of industrial design for GE Appliances.

"There will always be a need for larger appliances for existing homes; however, we can't ignore the growing need in urban environments. GE Appliances is excited to tackle the design challenge of creating micro-kitchen concepts that help people maintain or enhance their lifestyle in substantially less square footage."

One of GE's micro kitchen concepts, which is dubbed the monoblock, is an integrated unit with cooking, dishwashing and refrigeration in a single standalone enclosure that would become a seamless part of the cabinetry.

Why Smaller?

Many factors are playing a role in the trend toward smaller dwellings. As the cost per square foot of real estate in metro markets increases, some people are choosing smaller dwellings out of necessity. In the U.S., there are 32 million one-person households as of 2012 and that number is expected to grow.

Also contributing are demographic shifts, such as the aging of the U.S. population; downsizing Baby Boomers; the changing employment picture for Gen Y; younger people delaying home purchases preferring to rent; and trends toward simplification and a more environmentally friendly lifestyle.

"Boomers will have a huge impact on smaller living and it's GE's bet that they won't want to lose any of the luxury or convenience they've had in their lives," said Lenzi. "Whether they need a micro

BRAVAT

BY DIETSCHER  1873



Bravat Marketing Pte Ltd [Exclusive Distributor]

1 Commonwealth Lane #01-10/17 One Commonwealth Singapore 149544 | Tel : +65 6659 1868 | Fax : +65 6659 1968 | Email : gallery@bravat.biz



kitchen for their downsized dwelling, vacation home, refurbished man cave or boat. Boomers have always wanted the best.”

From Concept to Reality

GE’s unique position in the appliance industry, as it is the first manufacturer to have its own microfactory production facility located in Louisville, Ky., called FirstBuild, will enable the company to quickly prototype, make and sell small batches of the micro kitchens in late 2014.

“Through FirstBuild and its global online community, GE Appliances is able to create, design, build and sell new innovations for your home faster than ever before,” says Venkat Venkatakrishnan, director of R&D for GE Appliances and mentor for FirstBuild.

“We launched a micro-kitchen challenge in May, and everyone from enthusiasts to experts can join FirstBuild.com to contribute their ideas to make the concepts a reality.”

While the FirstBuild co-creation community will be collectively creating the first designs, Lenzi’s industrial designers have also been imagining concepts delivering the power of full-sized appliances in a pint-sized package.

One concept, dubbed the monoblock, is an integrated unit with cooking, cleaning and refrigeration in a single standalone enclosure that would become a seamless part of the cabinetry. As designed, the consumer or builder could preconfigure their choices and have the custom-fabricated unit delivered to the home or job site.

The second concept is based on a counter-top-high, 24-inch-wide modular platform. The drawer-based system allows the consumer to choose the modules they want to have in their living space. All traditional kitchen appliances, including a microwave oven, conventional oven, convertible refrigerator and freezer, and dishwasher are drawer-based.



An induction or radiant glass cooktop, downdraft ventilation system, and kitchen sink with disposal complete the full kitchen experience. The micro-kitchen drawers feature panelized construction providing a nearly unlimited choice of cabinet materials and finishes, so the décor possibilities are endless.

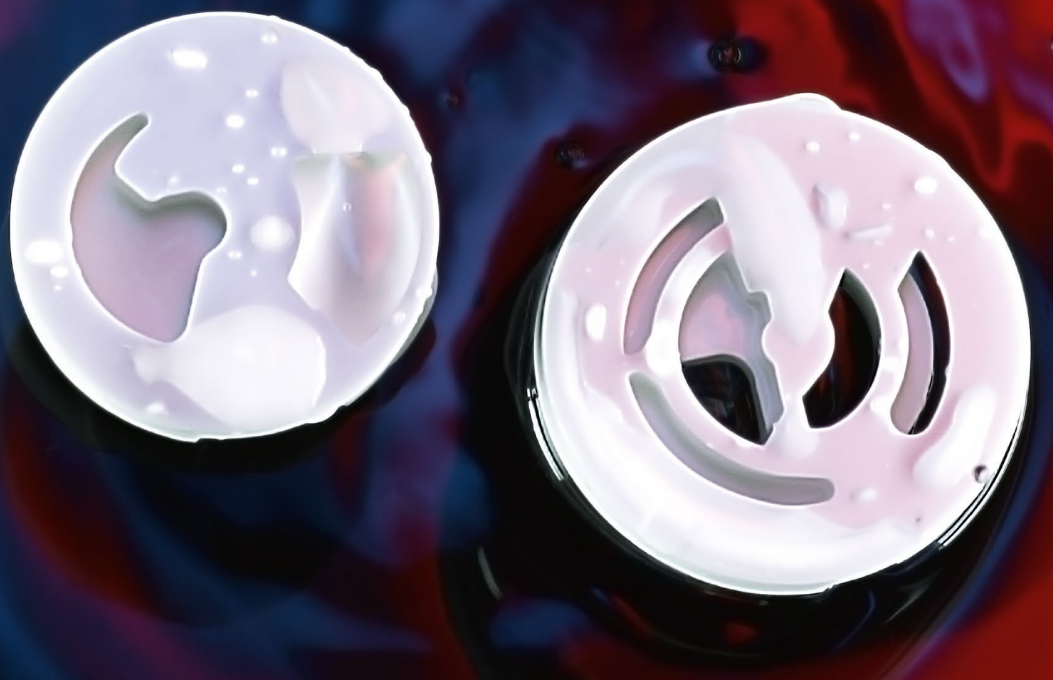
GE Appliances

GE Appliances is at the forefront of building innovative, energy-efficient appliances that improve people’s lives. GE Appliances’ products include refrigerators, freezers, cooking products, dishwashers, washers, dryers, air conditioners, water filtration systems and water heaters. General Electric (NYSE: GE) works on things that matter to build a world that works better.

For more information, visit www.ge.com/appliances.

triduon[®] thermo

*The cartridge
with a heart of Ceramdisc[®] ceramic seal discs*



THE MIXING CARTRIDGE WITH CERAMIC DISCS AND THERMOSTATIC SCALDING PROTECTION

Quality Made in Germany



www.triduon.com

AN ELEGANT STATEMENT IN 18-CARAT GOLD: THE ROSE-GOLD "CYPRUM" MAKES IT'S PREMIERE IN THE KITCHEN

Dornbracht is transferring the increasing significance of the copper colour trend to the kitchen environment. "Cyprum" is a high-gloss finish produced using 18-carat gold and copper and is now available for the first time for kitchen fixtures.

The dominance of cool white and metallic tones is passé in kitchens and interiors and individual style is increasingly characterised by warm tones and earthy, natural materials. Copper in particular is defining quality aesthetics as a contemporary fine metal.

Dornbracht is adding a new rose-gold sheen to its fitting icons Tara and Tara Classic, as well as its single-lever 360 degree range-of-motion mixer Pivot, which it introduced in 2013. The colour of the galvanized finish is synonymous with elegance and opulence characteristics which provide kitchens and interiors with emotion and individuality. "Cyprum" is made of 18-carat gold and copper and has a very superior finish. The name was derived from the Latin word "Cuprum" for copper.

The pure and well-defined style of the Tara series, and the intuitive functionality of Pivot subtly interact with the warm elegance of "Cyprum". With their high-gloss finish, the rose-gold fittings make stylish statements in contemporary kitchen architecture.

By introducing "Cyprum" to the kitchen, Dornbracht is successfully extending its modular sampling concept, which includes a combination of outlets, controls and surfaces across designs and series.



Since Spring 2014, "Cyprum" will be available for the Tara, Tara Classic and Pivot fittings series.

About Dornbracht

Aloys F. Dornbracht GmbH & Co. KG, with headquarters in Iserlohn, is a globally active family-run manufacturer of high-quality fittings and accessories for bathrooms and kitchens.

Highly-qualified employees and the most modern production technologies guarantee the highest manufacturing quality. With "Culturing Life" as its brand claim, the Company broadens its foundations of competence in the areas of design and water: technological progress in terms of connectivity and convenience, and prevention in terms of health and well-being, increasingly characterise the brand orientation and product developments of the future.

This is how Dornbracht is forever designing cultivates life anew The long-running cultural commitment through its Culture Projects provides Dornbracht with an ongoing source of fresh inspirations while advancing innovation and technology leadership in the bathroom and kitchen habitats. Dornbracht is part of the Dornbracht Group that, together with Alape, brings together two premium providers for the bathroom and the kitchen.

For more information, visit www.dornbracht.com.

STAINLESS STEEL SINK PUSH/PUSH WASTE



Contemporary urban designs, User friendly functionality, environmentally friendly and easy to install. "Do kitchen wastes get any better than this?"

We at BS&BK do not think so, and with you now reading this I feel sure that you too will soon agree.

At BS&BK we are driven to provide our customers with patented "cutting edge" technology at the point where you most need it, in the kitchens "MOST USED" area, the kitchen sink.



ADD: JIANGSHAN, YINZHOU, NINGBO, CHINA 315191
TEL: 0574-87641687 FAX: 0574-87641686
INFO@BOSHENGPLUMBING.COM
WWW.BOSHENGPLUMBING.COM



BS&BK

DURAVIT ADDS TWO NEW DESIGNS TO ITS VERO KITCHEN SINK RANGE

Ceramic kitchen sinks introduce an interesting touch to the kitchen and offer numerous advantages, from personalised colours to hygienic aspects. The new console and flush-fit versions complete Duravit's timeless rectangular Vero range.

The flush-fit Vero sink goes well with practically all worktop materials offering plenty of scope for individuality. Several positions are available for the tap fittings and pop up waste control.

The clean-lined and practical console version stands only 12 mm above the work surface, distinctive yet unobtrusive. The smooth surrounds soften the rectangular lines and emphasise the timeless design of the sink.

A cutting board made of epicurean provides additional work space. Liquids or cuttings can be simply wiped into the sink. The anti-bacterial epicurean surface is like wood – ideal for cutting, but more hygienic to clean.



All Vero kitchen sinks are 445 mm deep, large enough for cleaning pots and pans of all sizes. In addition to the classic colours such as White, Velvet White and Crema Matt, the sinks are also available in the darker Anthracite Matt and Black.

For more information, visit www.duravit.com.

ROCA INTRODUCES THE PRISMA COLLECTION



Wide Range, Combined Solutions

Prisma is an innovative and versatile collection. Thanks to its variety of options and sizes, Prisma is re-affirmed as the ideal solution for both private and public bathroom spaces.

The Prisma collection is composed of several elements including: seven basins which come with double bowl versions and in an asymmetric version with an integrated shelf, ten base furnitures which come in all sizes and in one or two-drawer versions, five stainless steel metallic structures with integrated shelf and towel rail, towel rails both for furniture and basins, and two LED mirror versions in different sizes.

Moreover, Prisma can have towel rails that are perfectly integrated both in furniture bases and basins, thus optimising the available space.

Minimalist and Pure Design

Prisma has a pure and minimalist design, and it adapts to any space. Versatility defines Prisma basins, its installation can be wall-hung, vanity and with metallic structure, widening the options to build the bathroom space. Its pure and rational lines design allow an adjustment to the environment and timelessness. The functionality of Prisma basins is evident in the asymmetric versions



DuraStyle. For Project and Home.

Design by Matteo Thun & Partners



DuraStyle. The new standard for your bathroom. Excellent design. Smart technology. Best price-quality ratio. Unlimited possibilities. Quality that lasts. A Duravit original. To find out more: **Duravit Asia Limited (Singapore Branch)**, 63 Tras street Singapore 079002, Phone + 65 6238 6353, Fax + 65 6238 6359, info@sg.duravit.com; **Econflo Systems Pte Ltd**, 263/265 Beach Road, Singapore 199544, Phone + 65 6396 3738, Fax + 65 6396 3736, sale@econflo.com, www.econflo.com; **Ferrara Asiapac Pte Ltd**, 33 Ubi Avenue 3, #01-27, Vertex, Singapore 408868, Phone +65 6235 0020, Fax +65 6484 1087, infor@ferrara.com.sg, www.ferrara.com.sg, **Sansei Singapura Pte Ltd**, 462 Tagore Industrial Avenue, Singapore 737831, Phone + 65 6292 8321, Fax + 65 6292 4520, sales@sansei.com.sg, www.sanseionline.com; **Wan Tai & Co (Pte) Ltd**, 25 Changi South Avenue 2, Singapore 486594, Phone + 65 6546 5900, Fax + 65 6546 6388, info@wantai.com, www.wantai.com, www.duravit.com.hk



(900 and 1100 mm) with integrated shelf that use and optimise the available space to the fullest.

Prisma collection has at its disposal, two different furniture versions, with one or two drawers, allowing users to store all their needed things. Moreover, both one and two-drawer versions have a hidden internal drawer for small objects. All Prisma furniture have complete extraction drawers and without cut-out, that allow an increased comfort and storage capacity.

Prisma offers two mirror versions, namely the Basic and Comfort

versions. Both include low consumption LED integrated lighting and the Comfort version has also a demister device system and lower ambient light, activated by touchless sensors.

Prisma furniture is available in four elegant finishes: glossy white, glossy anthracite grey and textured ash wood. It is also comes in a combination of white fronts with textured ash wood laterals. The furniture interiors also have a textile finish, which is pleasant to the touch and sight.

For more information, visit www.roca.sg.

HOTEL EXPO CELEBRATES TEN YEAR MARK

Macau's longest-running exhibition integrating the hotel, catering, hospitality as well as design and architecture sectors is celebrating its ten year landmark this year, bringing with it even more products and innovative development.

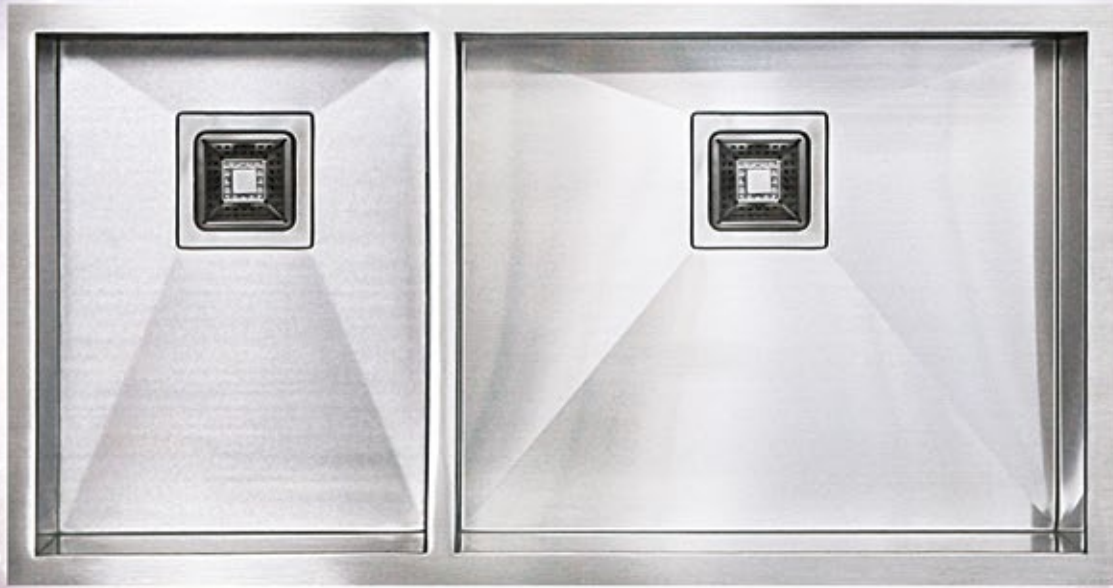
The 10th International Hotel Expo (Hotel Expo 2014), a premium event exclusively supported by Asia Hotel Industry League (AHIL), will be staged at the Venetian Macao from November 26 to 28, 2014.

The exhibition this year is backed with a favourable market situation with a number of large-scale luxury hotels and resorts in Macau opening in 2015, and many projects being launched in China and Asia. Along with a special feature "Soft Architecture", this year's Hotel Expo would be able to provide the suppliers of decorative installation, art paintings, decorative lighting, indoor and outdoor plant sculpture, curtain fabric among others, with an ideal trade platform to explore the enormous market.



SUPREME WALTZ

KITCHEN SINK



Dance to the new Square

Handcrafted to perfect elegance.

Its unique square strainer design adds an aesthetic look to your décor.

Make a difference with Waltz. Let's Dance.

RubineTM
Indulge in the Aqua Lifestyle

Rubine s.r.l. Via Ponchielli 26, 10024 Moncalieri, Torino/Italy Email: enquiries@rubine.it Website: www.rubine.it Facebook.com/rubineitaly

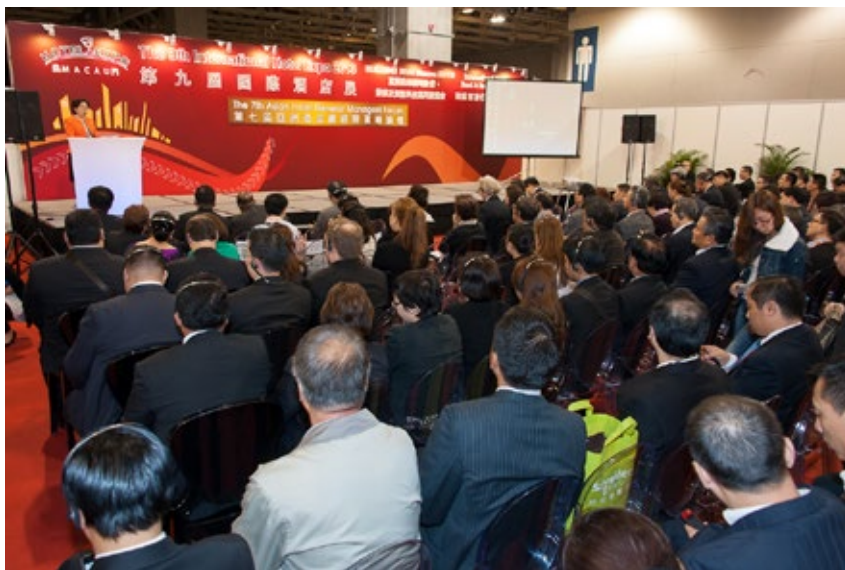
Marketed by: Casa (S) Pte Ltd, 15 Kian Teck Crescent, Singapore 628884 Tel: 6268 0066/ 6586 0512 Fax: 6266 8069

Owners and key decision-makers of the hotels, casinos, resorts, clubhouses, entertainment complexes among others from Macau and Hong Kong, as well as delegations led by the hotel associations from China, Korea, Thailand, Malaysia, the Philippines among others will also be attending the noteworthy event, thereby enhancing co-operation and development for the Asian hotel industry.

Hotel Expo is not merely an exhibition but an annual gathering and a carnival of the Asian hospitality industry.

A number of fascinating activities will be held during the three-day exhibition, creating an ideal trade exchange platform and adding more attractions.

Some of the exhibition highlights include The 8th Asian Hotel General Managers Forum, China Food Association presents high-end ingredients for hotel catering, Seminar on Co-operation between Hotels and SMEs, Coffee Culture Workshop and Spa and Wellness Forum.



Other highlights include the Asian Star-Graded Hotel Award, Asian Best Hotel Suppliers Award, Asia Culinary Contest, Asia Green Award, Best Hotel Furniture Suppliers Award and the Macau International Lotus Cup Hotel Furniture Design Competition

The three-day event promises active participation from worldwide industry operators.

For more information, visit www.hotel-exhibition.com.

MCE PLANS TO LAUNCH MCE SAUDI AND MCE ASIA IN 2015

MCE (Mostra Convegno Expocomfort), the world's leading biennial exhibition dedicated to residential and industrial installations, air-conditioning and renewable energy will launch two new events in 2015: MCE Saudi, which will take place from 4 to 6 May in Riyadh and MCE Asia, which will take place from 2 to 4 September in Singapore.

In the 2014 edition of the MCE exhibition, there were more than 2,000 exhibitors and 156,000 trade visitors from 147 countries who visited the show. A host of exhibitors have already started signing up for the two new international shows scheduled for 2015.

An important challenge taken on by Reed Exhibitions Group, the organiser of MCE, is the improvement of plant-engineering technology. The Group aims to highlight energy efficiency at MCE and its impact on countries that have great potential for its development. According to the latest figures elaborated by CRESME, investment spending in the construction industry will stimulate an increase in domestic productivity growth in 2014, 2015 and 2016.

Moreover, there are another geographical areas where the market has an increase in demand for systems and technologies in the residential and industrial installations industry.

"Because of this, we plan to launch MCE Asia and MCE Saudi," said Massimiliano Pierini, Business Unit Director of Reed Exhibitions Italia.

"We aim to offer exhibitors at MCE, in anticipation of the next MCE 2016 in Milan, a valuable opportunity to market themselves locally. The demand for a high level of technical skills and knowledge is growing fast in the field of renewable energy, ventilation, air-conditioning and sanitary hot water."

Pierini adds, "We aim to offer our exhibitors at MCE a privileged platform to increase their customer portfolio, expand their trade relations, and help them understand local requirements."

For more information, visit www.mceexpocomfort.it.



The 10th International Hotel Expo
第十屆國際酒店展

Soft Architecture
酒店軟裝

A Premium Event Exclusively Supported by Asia Hotel Industry League
《亞洲酒店業聯盟》唯一支持的活動

2014. 11. 26 – 28 Cotai Strip® Cotai Expo™ (The Venetian Macao)
路氹金光大道® 金光會展™ (澳門威尼斯人會展中心)



**Don't miss the valuable opportunity to explore the huge potential hospitality market.
Contact us now for registration and details!**

把握良機，參加『第十屆國際酒店展』，開拓龐大的酒店軟裝市場。

Enquiry 查詢：

Coastal International Exhibition Co., Ltd.
海岸國際展覽有限公司

Room B, 16/F Times Tower, 391 - 407 Jaffe Road, Wanchai, Hong Kong
香港灣仔謝斐道391 - 407號新時代中心16樓B室

Tel 電話: (852) 2827 6766 / (853) 6299 8804 / (86-20) 8364 2986

Fax 傳真: (852) 2827 6870 / (86-20) 8364 2686

Email 電郵: general@coastal.com.hk



INTERIOR LIFESTYLE TOKYO WELCOMES A RECORD-BREAKING 27,827 VISITORS TO ITS 2014 EDITION

Interior Lifestyle Tokyo, held from 4 to 6 June at Tokyo Big Sight closed its doors with outstanding success.

In its 24th edition, the show was attended by a record-breaking 27,827 visitors and 819 exhibitors (Japan: 607, Overseas: 212) from 27 countries. Exhibitors presented items that balanced originality and quality, while the fairground was vibrant with buyers searching for new design items and trends. Many exhibitors left helpful comments after meeting quality buyers from around the world.

This year's highlight was 'Welcome to my home!' which took place at the Atrium. A number of giant balloons popped up onto the ceiling, while a variety of exhibitor's products offered new ways of getting together that stimulated people's senses and enhanced communication. The area was packed with people throughout the three days.

A renowned interior stylist and a collaborative director of the Atrium, Chinatsu Kambayashi from Jamo Associates commented, "Our concept was to make the Atrium one big home, so we designed this area as if we were hosts. We focused on the functionality of the space and I think we successfully blended design into the atmosphere."

A special exhibition area appeared at the centre of the Atrium this year where exhibitors displayed their various products and explained them to visitors.

Japan Style, was another highlight at the show for showcasing Japanese products that fused traditional high-level skills and techniques into modern lifestyle. Two exhibitors won the Interior Lifestyle Awards from this zone.

Aya Taniguchi, Marketing Division Chief from Taniguchi Aoya Washi Co Ltd, who won the Best Buy Award said, "We don't have stores, so we exhibited at this fair to get direct feedback from visitors."

The show was a successful business platform for international exhibitors as well. This year, Italian companies gathered



as a huge pavilion at the show.

Interior Lifestyle Tokyo is also a place for young talents to flourish. The Next and Talents zones were full of visitors searching for new designs and ideas. Two exhibitors, Jun Murakoshi Design and meguminto Design were selected as the winners of the 'Young Designer Award' at Talents.

The next Interior Lifestyle Tokyo will be held from 10 to 12 June 2015 at Tokyo Big Sight, West Hall.

For more information, visit www.interior-lifestyle.com.

KON reproduction vintage-style charm

This section presents the perfect product KON retro style, aesthetics and functionality into one, never fade exudes charisma and unique charming temperament, Remembrance classic, KON will introduce modern refined elegance, won the majority of consumers.



Mixer . by KON international

www.kon.com.cn

Asia-pacific: Frank.lee@kon.com.cn

China: Jane.jia@kon.com.cn

Worldwide: Freeman.fang@kon.com.cn

RED DOT AWARD: COMMUNICATION DESIGN HONOURS THIS YEAR'S BEST



The winners of the Red Dot Award: Communication Design 2014 have been chosen, with the respected Red Dot jury selecting the year's best entries from a total of 7,096 projects entered. Designers, agencies, freelancers and young professionals were able to enter their works in sixteen categories. Out of these, the international panel gave awards to the newest marketing approaches, creative trends and advertising campaigns. The jury awarded a total of 569 Red Dots.

"By constantly adjusting our categories to the changing requirements of the market, our competition is always at the cutting edge. In more than 20 years, Red Dot has succeeded in creating a global platform where communication designers from all over the world can measure themselves against each other," said Prof. Dr. Peter Zec, founder and CEO of Red Dot.

Thebe Ikalafeng from South Africa joined the jury for the first time this year. For the branding expert, excellent design solutions are already reflected in the details.

"It's not always about great identity and packaging design, but sometimes it's in the message or the structure. That's what I look for in design— simplicity, clarity, insight and effectiveness."

From Corporate Design to Game Design or Publishing and Print Media, the participants were allowed to let their creativity run free. But only a few met the demands of the jury, with only 101



Red Dot: Best of the Best titles awarded this year. This award for top design quality was thus granted to just 1.4 per cent of all entries.

The Red Dot: Best of the Best laureates will find out which of them will be awarded the Red Dot: Grand Prix, the highest individual award in the competition, on 24 October at the Red Dot Gala.

After the glamorous Red Dot Gala, the top names on the international design scene will congregate in the E-Werk in Berlin for Designers' Night. This will also mark the opening of the "Design on Stage" winners' exhibition, which shows all award-winning works in the Red Dot Award: Communication Design 2014.

For more information, visit www.red-dot.org.

Aqualem
Italian Design

Aqualem Bathroom Tech Limited

Stylish bathroom accessories make your bathroom an organized and beautiful place. Bathroom is a great place where you probably spend most of time daily in front of the mirror.

Texture collection

AQUALEM BATHROOM TECH LIMITED

www.aqualem.com
Katherine@aqualem.com
0086 750 272 1133

SINGAPLURAL'S INAUGURAL DESIGN MISSION TO JAPAN, A SUCCESS



The Singapore Furniture Industries Council (SFIC), together with SPRING Singapore, led a group of nineteen delegates to Japan for a span of twelve days in May, for SingaPlural's inaugural design mission. The delegates comprised of independent designers, entrepreneurs and design institutions.

The SingaPlural's design mission is a rethink and revamp of the preceding design study missions that SFIC organises on an annual basis. These missions to Germany, Spain, Italy, Denmark and Sweden emphasised on design personalities, designer furniture companies and retailers.

Dissimilar to that, SFIC and SPRING Singapore focuses on SingaPlural's trip to Japan as a beneficial conduit to provide Singapore-based designers with an in-depth understanding at craftsmanship and manufacturing facilities. This underpins a solid foundation for successful collaborations between designers and manufacturers.

The design mission kicked off in Tokyo. It was an insightful overview of the design industry and design-led retailers in Japan where the mission delegates visited prolific furniture showrooms and design enclaves. Furniture-producing towns like Asahikawa in Hokkaido, as well as Morodomi and Okawa in Kyushu were noteworthy educational stopovers for the designers.



Photo Credits: Singapore Furniture Industries Council

Other than manufacturers of wooden toys, tatami mats and glassware, the delegates also had the opportunity of meeting a shōji screen master-craftsman who introduced them to the almost-lost art of intricate wooden screen-making, as well as studying and understanding the production processes in these towns. A highlight of the trip was the trip to the world-famous ceramics town, Arita, eminent for its fine porcelains.

During the mission, the delegates had boundless opportunities to network and connect with notable leaders from different expanse and scope including furniture industry cooperatives, young craftsmen and entrepreneurs of the furniture and ceramics industries, thereby establishing collaborations and strengthening closer relationships.

For more information, visit www.SingaPlural.com.



The 7th International Exhibition and Conference on Building Maintenance & Facilities Management Held in Thailand for the Asia market.

18/19/20 September 2014, Hall 5, IMPACT Exhibition Center, Bangkok, Thailand

- Exhibition ○
- Thailand Facility Management Conference ○
- Facility Security Summit ○
- Industry Seminars, Certification Courses ○
- and Product Presentations
- Thailand Facilities Tour ○
- Business Meetings & Networking Function ○
- New Products & Innovations Showcase ○
- Country Pavilions ○
- Job Center ○
- Media Pavilions ○



Part of :



Organizer :



Supported by



For sales & sponsorship enquiries: ☎ +66 (0) 2833 5210 ✉ ajinveatv@impact.co.th

The Power of Exhibitions - Your face-to-face marketing platform to generate sales leads

RECYCLED RAINWATER AND DAILY CAMPUS RATION OF AIRCON USE SAVES MDIS SGD\$28,000 ANNUALLY

Recycling rainwater and daily rationing of aircon use on campus are some of the eco-friendly features at its Stirling Road campus (Singapore) that helped MDIS win the Best Eco Practices (Merit) Award at Eco Action Awards 2014.

These features have resulted in MDIS saving 100,000kwh of energy annually, which is equivalent to powering over 27 three-room HDB flats a year. All these translate to a total cost saving of SGD\$28,000 annually for MDIS.

MDIS not only “harvests” rainwater to irrigate the campus’ landscape but also uses only green-label certified materials for its building and construction projects. Fans and lights in the communal toilets on campus are controlled by motion sensors, and air conditioning is available to hostel residents only between 7pm and 7am daily, on weekdays.

On top of these, the energy gathered by the rooftop solar panels/tube solar collectors at its fifteen-storey students’ hostel is used to light transitional areas and heat up water for showers. MDIS has installed some 130 square metres of vacuum tube solar collectors form a rooftop trellis, gathering energy to heat up to 64,000 litres of water that is supplied to 182 showers every day.

Eco Action Awards 2014 is held as part of Eco Action Day 2014, Singapore’s largest business-led annual environmental campaign organised by Ricoh Asia Pacific in conjunction with World Environment Day in June.

The latest award is the third garnered by MDIS. In 2010 and 2013, MDIS won the Building and Construction Authority (BCA) Green Mark Gold Plus Award respectively for the students’ hostel and the revamped six-storey administrative Block A.

Block A features a roof garden serving as a heat insulator to reduce the air-conditioning in the offices below. The front curved glass façade and the actual building wall of Block A creates a large air space serving as an effective insulator of indirect solar heat during the day.



MDIS won the Building and Construction Authority (BCA) Green Mark Gold Plus Award for its 15-storey students’ hostel in 2010 and the revamped six-storey administrative Block A in 2013.



Mr Chua Chen How, Assistant Secretary-General and Chairman of the Property Sub-Committee for MDIS receiving the Best Eco Practices (Merit) Award from Mr Nobuaki Majima, Managing Director for Ricoh Asia Pacific at the Eco Action Day Post Event & Awards Ceremony at Hotel ParkRoyal (Singapore)

Mr Chua Chen How, Assistant Secretary-General and Chairman of the Property Sub-Committee for MDIS received the Best Eco Practices (Merit) Award in July.

Mr Chua said, “Not only has MDIS developed its buildings with all the eco-friendly hardware, we have also taken pro-active steps to reduce usage of energy and water on campus. We have put into practice our Green MDIS philosophy on a daily basis and we have reaped tremendous financial and social benefits from our sustainability efforts.”

“This year, we decided to push our efforts a notch higher. We will be implementing ‘Lights and Computer Off Hour’ at our Stirling Road campus. This will happen from 1pm to 2pm every Friday starting from July. With input from our students and staff, MDIS will continue to put in place innovative ideas to make our campus more resource-efficient as well as a better place to study, work, play and for some, to stay in.”

For more information, visit www.mdiss.edu.sg.

THIRSTY ENERGY SECURES ENERGY IN A WATER-CONSTRAINED WORLD

Significant amounts of water are needed in almost all energy generation processes, from generating hydropower, to cooling and other purposes in thermal power plants, to extracting and processing fuels. Conversely, the water sector needs energy to extract, treat and transport water.

Both energy and water are used in the production of crops, including those used to generate energy through biofuels. Population growth and rapidly expanding economies place additional demands on water and energy, while several regions around the world are already experiencing significant water and energy shortages.

Today, more than 780 million people lack access to potable water, and over 1.3 billion people lack access to electricity. At the same time, estimates show that by 2035, global energy consumption will increase by 35 per cent, while water consumption by the energy sector will increase by 85 per cent. Climate change will further challenge water and energy management by causing more water variability and intensified weather events, such as severe floods and droughts.

These interdependencies complicate possible solutions and make a compelling case to expeditiously improve integrated water and energy planning in order to avoid unwanted future scenarios.

Will water constrain our energy future?

While a global water crisis could take place in the future, the energy challenge is present. Water constraints have already adversely impacted the energy sector in many parts of the world. In the U.S., several power plants have been affected by low water flows or high water temperatures.

In India, a thermal power plant recently had to shut down due to a severe water shortage. France has been forced to reduce or halt energy production in nuclear power plants due to high water temperatures threatening cooling processes during heat waves. Recurring and prolonged droughts are threatening hydropower capacity in many countries, such as Sri Lanka, China and Brazil.

Despite these concerns, current energy planning and production is often made without taking into account existing and future water constraints. Planners and decision-makers in both sectors often remain ill informed about the drivers of these challenges, how to address them, and the merits of different technical, political, management, and governance options. The absence of integrated planning between these two sectors is socio-economically unsustainable.

What is Thirsty Energy?

To support countries' efforts to address challenges in energy and water management proactively, the World Bank has embarked on a global initiative: thirsty energy. Thirsty Energy aims to

WWW.LIVINGKITCHEN-COLOGNE.COM



imm

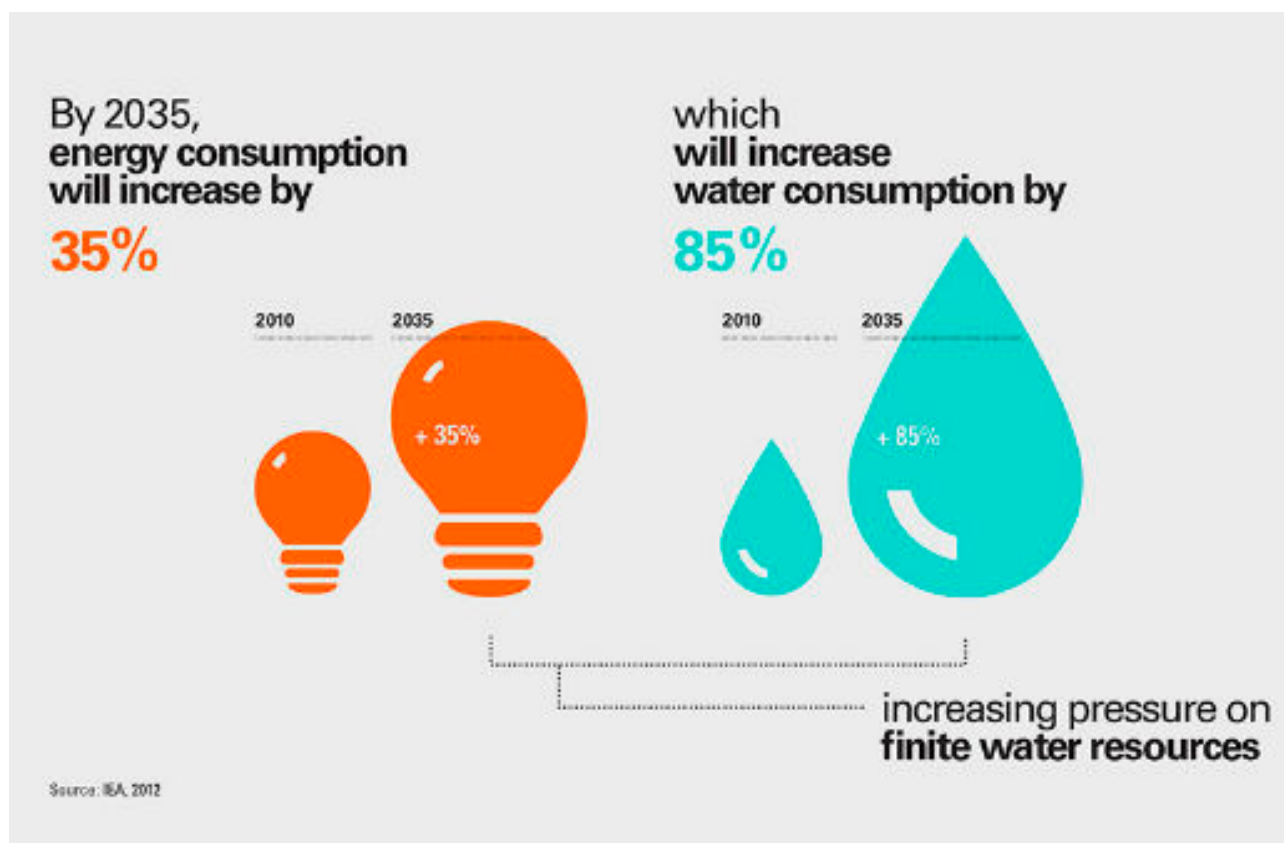
imm cologne presents:

Living Kitchen **COOK. ENJOY. LIVE.**
THE INTERNATIONAL KITCHEN SHOW AT IMM COLOGNE
19–25 JANUARY 2015

Do you want to attend the best kitchen event of all time?
We're turning up the heat! At LivingKitchen, the industry's leading brands will present everything you need to bring your kitchen to life. In 2015, the central trade fair for kitchens, electronic devices and accessories will be even more international and inspiring than ever before. LivingKitchen and imm cologne unite to present the world's range of kitchens, furniture, home accessories and interior design. Discover the future of your business at the LivingKitchen and imm cologne trade fair duo in the European metropolis of Cologne.

 **koelnmesse**

Koelnmesse GmbH, Messeplatz 1, 50679 Köln, Germany
Tel. +49 1806 938 810, Fax +49 221 821 99 1351
livingkitchen@visitor.koelnmesse.de



help governments prepare for an uncertain future, and break disciplinary silos that prevent cross-sectoral planning. With the energy sector as an entry point, thirsty energy quantifies tradeoffs and identifies synergies between water and energy resource management.

Thirsty energy demonstrates the importance of combined energy and water management approaches through demand-based work in several countries, thus providing examples of how evidence-based operational tools in resource management can enhance sustainable development. This created knowledge will be shared more broadly with other countries facing similar challenges.

Thirsty Energy tailors approaches depending on the available resources, modelling experience, and institutional and political realities of a country. In order to ensure client ownership and successful integrated planning, thirsty energy focuses on building the capacity of relevant stakeholders and leveraging existing efforts and knowledge.

The energy-water challenge is too large for any organisation to tackle alone. Due to the pivotal role of the private sector in the energy and water sectors, a Private Sector Reference Group (PSRG) has been established to share experience, to provide technical and policy advice, and to scale-up outreach efforts.

What is Thirsty Energy doing?

Increasing awareness regarding the water requirements of energy projects among political decision makers, the private sector and other stakeholders in order to reduce energy projects' vulnerability to water constraints.

Enhancing stakeholder capacity to plan and manage energy and water resources comprehensively, by improving the tools and technical solutions available to assess the economic, environmental and social implications of water constraints in energy and power expansion plans.

Fostering interdisciplinary collaboration between the energy and water sectors and promoting knowledge exchange to help develop an integrated management framework and ensure its practical application.

Developing innovative technical tools and approaches and policy-oriented material and guidance to help countries develop and manage their energy and water resources in a sustainable way.

About

Thirsty Energy, the first publication of the Energy-Water initiative, introduces the energy-water nexus, examines the water requirements of power generation and outlines some potential technical and institutional solutions for improving the management of the nexus.

For more information, visit www.worldbank.org.

LIVING THE EDGE



SUPREME WALTZ

marketed by **CASA (S) PTE LTD**

www.rubine.it

The contemporary and durable SUPREME WALTZ kitchen sink from the RUBINE collection is defined by its innovative thickness and stylishly modern square strainer waste. The sink's 1.2mm thickness makes it less susceptible to denting, bowing and noise transmission made from pots and pans hitting the metal surface. The Supreme Waltz's zero radius and stylish strainer waste not only give the sink a professional appearance, it also offers plenty of space for food preparation and cleanup. Available in under-mount and top-mount variants, the sink's flat-bottom models also allow users to stack dishes with less risk of them tipping.

ARMANI/ ROCA COLLECTION

marketed by **ROCA SINGAPORE**

www.armaniroca.com and www.roca.sg

The ARMANI / ROCA Collection is the result of the collaboration between two companies, both leaders in their respective sectors. The partnership combines the values and prestige of both brands. The collection features a completely innovative concept, where harmony and sensuality are perfectly combined with comfort and elegance. This balance is made possible thanks to the selection of materials, the choice of textures and surprising combinations. The collection encompasses all manner of products for the bathroom. This includes wall and flooring coverings to accessories and new fixtures, which allow users to create sophisticated and functional contemporary spaces.





ARA

marketed by **DELTA FAUCET**
worldwide.deltafaucet.com

The award-winning, contemporary line of faucets, showers and bath accessories in the ARA Bath Collection are influenced by the angular silhouettes seen in modern residential homes. The new suite of cutting edge products boasts crisp rectangular shapes with slim profiles that will satisfy home and commercial building owners looking for sophisticated designs to complement their modern interiors.

E522B

marketed by **FISHER & PAYKEL APPLIANCES**
www.fisherpaykel.com

The new E522B ActiveSmart fridge features a seamless stainless steel styling, and a new design which completely conceals the hinge from the side and front of the fridge. The fridge also features a faster icemaker, quicker water delivery and generous storage capacity. Additionally, users are able to adjust the fridge's airflow to achieve a stable and even temperature.





PEI

marketed by **AQUALEM BATHROOM TECH LIMITED**
www.aqualem.com

The Louvre Pyramid was the inspiration behind the design concept of Aqualem's creative PEI faucet. Just as most of the Modernist Architects who continually place emphasis on form, space, materials and technological research in their diverse works, the Pei faucet has a modern design with classic elements. Contemporary and elegant, the Pei faucet is thus characterised by geometric shapes. Merging aesthetics and function, the faucet is a perfect addition to a classic or modern bathroom environment.

MONOLITE

marketed by **BRANDONI**
www.brandoni.com

MONOLITE is an innovative heating concept designed by Fabrizio Brandoni. Elegant and functional, the heater is integrated into the shower, therefore allowing maximum space optimisation in the bathroom. Seamlessly fusing technology and aesthetics, the eco friendly heater is also made up of renewable materials such as wood, glass and recycled steel.



AN ARCHITECT'S PERSPECTIVE: DC TOWERS

by **Dominique Perrault**

Text by **Dominique Perrault**
Photos by **Michael Nagl**

When an architect delivers a building it is always an extremely emotional moment, marked by the end of a long process of mediation, from absolute potentiality of early sketches to fine tuning in situ of final details. An actor, for a time, in the endless development of territories, the architect exits the scene. He hands over the controls to those he has been working for.

This is the moment when architecture transitions from the intellectual, conceptual state to the fundamentally physical and real.

In Vienna, these feelings are magnified by the iconic character and extreme visibility of the DC Tower 1, but also by the history that binds me to the project. One beginning twelve years ago, in 2002, when WED held an international competition for the development of the last remaining section of Donau City, and a history which continues to be written.

From the start the project offered a site with incredible potential: an open terrain, facing Imperial

Vienna, embedded in the geography of the Danube, lying on a plateau on the river's eastern bank, like a bridgehead to two Viennas. But the site was not virgin territory as several previous projects had been conceived for it. So there was a conceptual "already there", a thoroughly fascinating virtuality.

Very early on, what kindled my interest most in this site was the bridgehead with the rest of the Donau City district, with the riverbanks but also the conditions for breathing life into a public space on an esplanade. We took advantage of this commission to design a genuine entry gate to Donau City.

Reversing objectives for earlier development projects envisaged here, WED specifications called for a decidedly mixed-use program, an indispensable condition for germinating the contemporary urban vibration we were proposing to create in and around the towers.

The towers function as two pieces of a gigantic monolith that seems to have split into two unequal



THE 20TH PHILIPPINE WORLD
BUILDING & CONSTRUCTION EXPOSITION



WORLD**BEX**



MARCH 11-15

Building

Visions

in the Realm of ASEAN Integration

2015

**World Trade Center Metro Manila | WTCMM East Wing A & B
Philippine Trade Training Center**

SHOW HOURS : 10:00AM - 8:00PM

ORGANIZED BY

WORLD BEX SERVICES INTERNATIONAL

#WORLD BEX20

+632 656 9239 info.worldbex@gmail.com www.worldbex.com



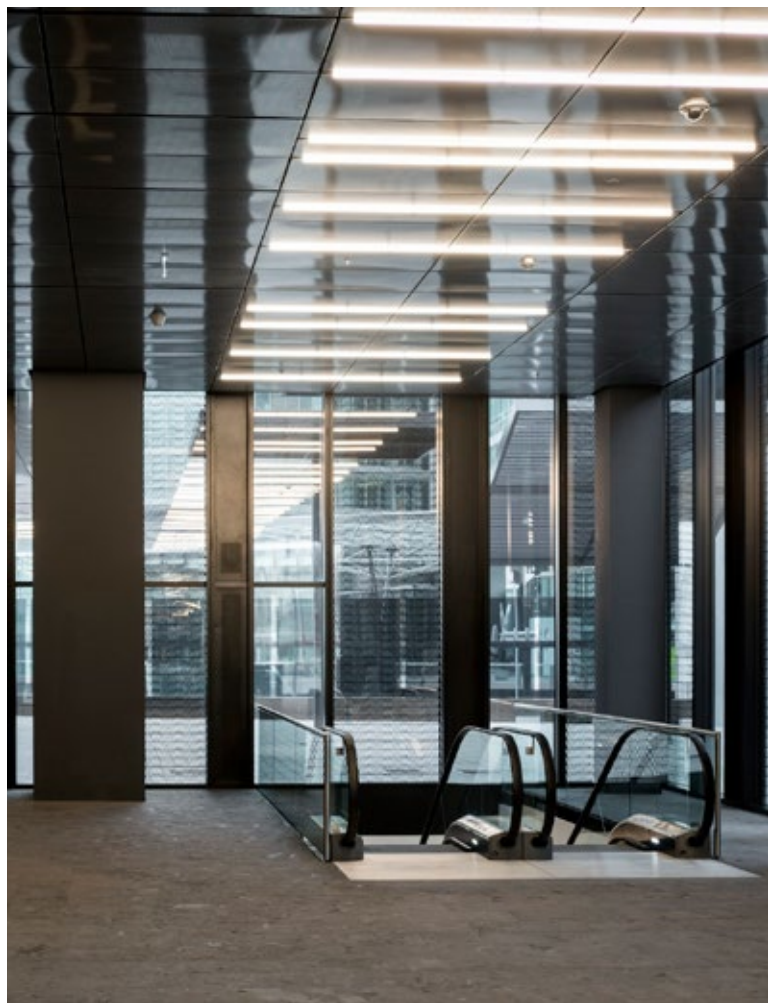
halves, which then open to create an arch with undulating and shimmering façades that bring the newly created public space to life in the void created there. Dancing on their platform, the towers are slightly oriented toward the river to open a dialogue with the rest of the city, turning their backs on no one, neither the historic nor the new Vienna.

Today, the first of the two towers is up and the result is quite amazing, thanks notably to the invaluable collaboration of the Hoffmann-Janz architecture office. The visual qualities of the folded façade create a new way to read the skyline of Donau City, its undulations signaling the entry point of this new polarity. The folds contrast with the no-nonsense rigor of the other three façades, creating a tension that electrifies the public space at the tower's base.

The façade's folds give the tower a liquid, immaterial character, a malleability constantly adapting to the light, a reflection or an event. For interior spaces, on the other hand, with Gaëlle Lauriot-Prévoist, the associate designer, we have tried to make the building very physical and present.

The structure is not hidden, does not evade the eye. The exposed concrete framework is touchable. Stone and metal used in lobbies and circulations contribute to the tower's generous and reassuring physicality.

We have tried to avoid a tendency in contemporary architectural production to hide the architect's real work, of sewing, suturing the project and contextualizing and anchoring it in the environment. Design emerges in a later phase. Towers floating above the ground are too severe, like architectural objects, objects in themselves.



They must land, take root in the soil of cities, in places where their urban substance is found. The aim is to get the basic horizontality of the city and the public space to coincide with vertical trajectories. The work on the base and foundation of the DC Tower 1 was highly stimulating.



Architectural arrangements determine the tower's relationship to the ground. On the back façade, the public space rises from the level of the esplanade in a series of staggered steps to reach the ground reference plane. This structuring of topography launches the tower and creates a spatial interface accessible to all, making the occurrence of such a physical object both possible and acceptable.

On the other three façades, metallic umbrellas gradually rise from the ground on the approach, softening the violence of the eruption and blending city and movement into the tower's future. Important work on neighborhood fringes remains to be done to reveal the geographic features of this urban landscape and take better advantage of the river bank.

With this first tower the city of Vienna has demonstrated that the punctual and controlled emergence of high-rises can participate in creating the city and produce contemporary, economical, high-energy performance mixed-use buildings adapted to metropolitan business requirements and lifestyles.





About Dominique Perrault

Born in 1953, Dominique Perrault is an architect and town planner. A committed figure in the contemporary architecture scene, teacher at the Ecole Polytechnique Fédérale of Lausanne, lecturer in France and abroad, he has been a member of the Scientific Council of the Greater Paris International Workshop since 2012.

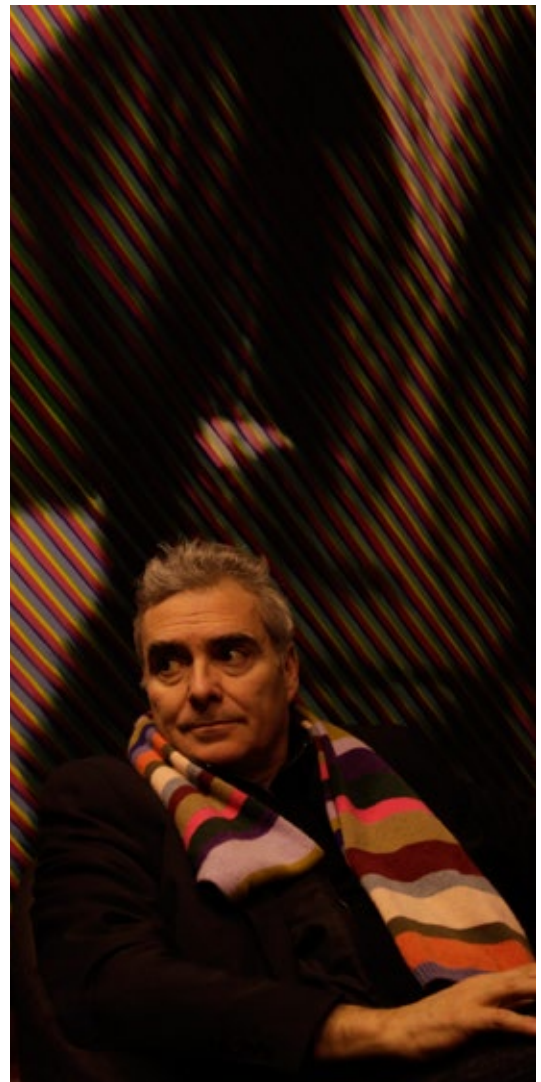
Architect of the French National Library after winning a competition in 1989, he has designed, among other works, the Velodrome and Olympic Swimming Pool in Berlin, the expansion of the Court of Justice of the European Communities in Luxembourg, the Olympic Tennis Centre in Madrid, Ewha Womans University campus in Seoul, and Fukuoka Tower in Osaka.

As his approach is to transform the landscape and territories, Dominique Perrault's work as an architect is strictly related to his role as an urban planner. His urban studies in France and abroad help describe the continuity and consistency of his method. Some of these projects include: the development of the Garonne river banks in Bordeaux and in Ile de Nantes, the business district in Pudong in Shanghai, China (1992), the UNIMETAL site in Caen (1994), the Donau City center, the Danube river bank in Vienna, Austria (2002) and the construction of the new European district and business center of Sofia in Bulgaria, and the new Quartier de l'Etang in Geneva (2011).

Curator of the French Pavilion at the 12th Architecture Biennale of Venice on the topic of metropolis, Dominique Perrault also joined the Conseil Scientifique de l'Atelier International du Grand Paris (AIGP) in 2012.

He also oversees major operations of heritage restoration such as the restoration of the prestigious Hippodrome de Longchamp in Paris and the Dufour pavilion at the Château de Versailles. Winner of the French Academy of Architecture's "Grand Gold Medal for Architecture", the Mies van der Rohe Prize for the French National Library, the French Grand National Prize for Architecture and the Silver T-Square Prize for the Berlier Industrial Centre, and the Seoul Metropolitan Architecture Award for Ewha Womans University.

For more information, visit www.perraultarchitecte.com.



STOCKHOLM GRAND HÔTEL

by Margraf

Text and photos by Margraf

Project Details

Hotel name: Grand Hôtel

Job Specification: Refurbishment of the "Veranda Restaurant" at the Grand Hôtel in Stockholm, Sweden

Architect: Richmond International

Materials used:

- Marble: Bianco Statuario, Dark Emperador, Crema Marfil and Grafite
- Composite quartz: Bianco Alaska
- Granite: Brown Antique

Supply scope:

- The Grand Buffet floor is supplied with Bianco Statuario polished floor slabs with Dark Emperador and Grafite inlays
- The Dining room floor features a 30 square metre central medallion supplied with a mosaic done up in Bianco Statuario and Grafite. Meanwhile, the floor is furnished with polished Crema Marfil tiles
- The Grand Buffet counter is supplied with the composite quartz, Bianco Alaska
- The Top is finished with Brown Antique granite



A Brief History

Facing the waterfront with an eye-catching view of the Swedish Royal Palace and the Gamla Stan or the old Stockholm area, the Grand Hôtel is known as one of the most exclusive Swedish hotels in the area.

Designed by French master Régis Cadier in 1874, the hotel has since become a prominent landmark due to its elegant interiors and the quality service provided by its staff. Over the years, the hotel has been home to many internationally renowned celebrities, artists, politicians, and music artists.

The Grand Hôtel is also internationally renowned for its Michelin star Veranda Restaurant, which is managed by chef Mathias Dahlgren. In addition, the hotel is also known for the interior of its bar lounge, saunas and pools of the Nordic Spa and Fitness club.

Marbled Perfection

Margraf, a notable manufacturer of Italian tiles, recently partnered with British architect Richmond International to refurbish the prestigious Grand Hôtel in Stockholm, Sweden.



The company supplied over 300 square metres of floor marble for the refurbishment of the hotel's restaurant areas. Traditional Swedish embroidery and antique fabrics inspired the elegant marble décors of the hotel's Veranda Restaurant. Statuary veined marble, or Bianco Statuario and the prominent "lacework" pattern of Grafite and Dark Emperador marble were used as a central trim.

Complimenting this, the restaurant's buffet table was furnished with Bianco Alaska, a surface made of durable composite quartz and arranged on marble rosone to accent its centrality.

The dining room of the restaurant meanwhile, is characterised by a classically defined geometric allure. This is made possible by the use of a 30 square metre floor medallion with a mosaic done up in complimenting shades of Grafite and Bianco Statuario marble. Polished Crema Marfil slabs with tiny geometric Grafite inlays add a special finish to the work.

About Margraf

Margraf, formally known as Industria Marmi Vicentini, started in Chiampo, Vicenza in 1906. Since its conception, the company has devoted years to research and the development of new

technologies. Additionally, it has also collaborated with renown international architects over the years.

More than a century later, Margraf is known as a reputable leader in the field. Margraf is known for its skilful extraction of marble. The company is also known for their ability to transform marble into finished, polished slabs or tiny tiles. They are also known for being able to provide a huge array of materials and products for building construction and architecture.

Margraf also ensures extensive environmental compliance, and continually invests its efforts in minimising environmental impact. This includes the use of cutting-edge technologies, the implementation of landscape recovery, energy saving practices, as well as the exploitation of renewable resources.

For more information, visit www.margraf.it.

CHANGI INTERNATIONAL AIRPORT, SINGAPORE

by Roca Singapore

Text and photos by Roca Singapore

Project Details

Architects: Skidmore, Owings & Merrill LLP (Terminal 3)

Interior Designers: Woodhead (Terminal 1 and Terminal 3)

Location: Singapore

Laufen products: *tamaro urinals*

Changi Airport is a key transportation hub in Southeast Asia and regarded as one of the world's most popular airports.

The latest building development was the upgrade of Terminal 1. The purpose of the project was to revitalize the Grand Dame of Changi Airport, giving the terminal a fresh and rejuvenated look. Works were carried out to refurbish the terminal's interior design and finishes, as well as improve passenger flow at key areas.

Developed on the thematic concept of a "tropical city", the upgraded T1 reflects Singapore's reputation as a garden city. Landscape, technology and movement are key elements of this idea and are realized in the elevated green walkways to the kinetic rain sculptures used throughout the terminal.

Changi Airport Terminal 1 redevelopment has been shortlisted amongst the best projects of the world at the World Architecture Festival.





Built to accommodate a surge in traffic, Terminal 3 is the latest expansion of Changi Airport. The interior design is calming and spacious and adopts an intuitive layout concept promoting ease of orientation.

The Design Process

The design process was characterized by four guiding design principles. First of which is clarity, due to easy orientation via textures, materials, and subtle architectural cues. Furthermore, minimal signage is required and the passenger journey through Terminal 3 is simple and natural.

The second principle is natural light, as the skylight roof structure maximises the application of natural light. The third principle is external views, as passengers must have extensive visual access to the external landscape. The last principle is maintainability, as Terminal 3 is designed for ease of maintenance, from materials finishes to furniture selection.

One characteristic feature is a unique five-storey vertical garden, the "green wall".

Together with the rest of the terminal the detailed interior design provides a rich tactile experience that sees passenger flow integrated with retailing, airport facilities and themed landscaping.

Lavatories in Terminals 1 and 3 are equipped with Laufen's tamaro urinals.

For more information, visit www.laufen.com and www.roca.sg.



SURFACES



TILES IN FASHION

A restoration projection of a Latin Pop Icon's California-Style Spanish Colonial home.

Text and photo credits: *Jimmy Reed and Rock Solid Tile, Inc.*

The Story

Jimmy Reed, an expert and leading custom designer and installer of glass mosaic tiles, recently completed the remodeling of the master bath, powder room and guest bath in Hollywood Hills for the California-style, Spanish Colonial Mansion of multiple Grammy and Latin Grammy award-winning pop star Draco Rosa.

After growing up in Puerto Rico, Rosa left to chase his musical ambitions and landed in Hollywood when he was sixteen. Back in San Juan and while growing up in Southern California, Rosa was exposed to the traditional Spanish-style mansions. When the timing was right, Rosa bought a classic, white-stucco, Spanish Colonial luxury home originally built in 1926.

Rosa, who won his first American Grammy in 2014 for "Best Latin Pop Album," had vivid memories of the vintage, handmade Malibu custom tiles and colourful murals that were featured prominently in traditional California Spanish Colonials.

Looking to restore the colourful and vintage look of the Malibu-style custom tile design inside his new 3,800 square-foot mansion, Rosa started to ask around about the top tile installers in the affluent neighborhoods of West Los Angeles.

It wasn't long before he was connected with Jimmy Reed. The two artists together planned out the tile designs for the Rosa's spacious Spanish Colonial just below the infamous Chateau Marmont in Hollywood Hills.

The Master Bath and Powder Room

In the master bath, Reed surfaced the walls with various different sizes of square and rectangular tiles, including the bold, linear “Blood Red Cross” deco stripe that runs along the top of the field tile design. For the shower in the master bath, Reed’s skill and expertise played a critical role in the ability to recreate the arch-shaped tiled shower entry and round tiled portholes that help achieve a timeless, yet modern appeal.

The master bath suite, like the powder room, was designed to restore the look and feel of the vintage Spanish Colonial-style mansions that represent a classic era in California architecture and design. Thus, Reed’s artistic custom design and installation included beautiful handmade, hand-painted Malibu tiles.

The smart and handsome tile design for the powder room or vanity suite reflected the classic and vintage appeal of the master bath. Handmade custom tiles from Malibu Ceramic Works were also similarly installed in the space.

While the powder room showcases a similar design to the design of the master bath, a different color scheme and softer finish was selected. The tiles used were customised 5” octagon-shaped red clay body floor tiles, which were glazed in a soft cream-like shade of green. The field tile design was done in a vintage Spanish Colonial style pattern that was coloured in by working closely with the tile artisans at Malibu Ceramic Works.



Concept Behind the Guest Bathroom

The guest bathroom meanwhile, features the most intricate tile design and installation among the three spaces. The concept behind the intricate and colorful design of the bath was inspired by a particular round table design Draco Rosa came across.

Further conversations contributed and steered Reed to the right direction in the project's intricate design. The design thus features four pieces of inverted custom tiles to create a repeating circular pattern.

"The concept for field tile in the guest bath was Draco's idea," said Reed, President of Rock Solid Tile, Inc.

"Like the table he described, we inverted four separate pieces of tile to create the individual round designs that form a continuous pattern. In keeping with the classic California-style Spanish decor we used octagon-shaped red clay tiles for the flooring. Had we stopped right there, the guest bath would have easily been considered a highly decorative installation."

The rest of the guest bathroom was further expanded with several extra pieces and lines based on the preferences of the clients. The tiles located at the visible patterned line above the half-wall of the bath were reversed in order to create a contrast and active two-piece series. The idea behind the concept was to create an elegant and sophisticated design that gave the room a more personal feel.

"We love it," said Draco Rosa, referring to his wife, Angela Alvarado Rosa, an actress and Latin Grammy Award winning music video producer (2004).

"We're big fans of the look and historical appeal of the classic Spanish homes here in Southern California. We wanted to upgrade the entire master bath suite, powder room and guest bath, but it was important to us that it was done in a way that honored the heritage of the home. We had the good fortune of being introduced to Jimmy Reed through a mutual friend. He truly understands design and how different colors and patterns flow together, and he's an incredible installer. The work Jimmy did here is just gorgeous."

About Jimmy Reed

Jimmy Reed is a top expert and installer of glass mosaic tile in the United States. His mastery of this medium has been accumulated over his 35 years of experience installing the pools and spas of the stars in California, speaks volumes about his consistent results and talent.

For more information, visit rocksolidtile.com.

