

• S O U T H E A S T • A S I A •
CONSTRUCTION

NOVEMBER - DECEMBER 2014

20th
ANNIVERSARY • 1994 - 2014



Cikampek-Palimanan Toll Road construction in Indonesia

Genie SX-180 boom lift arrives in Southeast Asia

Jammu to Udhampur Highway in progress

Kuwait invests in road expansion project

Major drainage system underway in Qatar



Previews

KOBELCO

MORE WORK.

The longer you use the Acera Geospec, the more money you save.

ACERA
GEOSPEC

Super X

ACERA Geospec Super X and Line-up

Work Volume



Increase

Fuel Consumption



Decrease



SK200
SK210_{LC}

KOBELCO CONSTRUCTION MACHINERY CO., LTD.

17-1, Higashigotanda 2-chome, Shinagawa-ku, Tokyo 141-8626 JAPAN

Tel: +81 (0) 3-5789-2127 Fax: +81 (0) 3-5789-2136

www.kobelco-kenki.co.jp

LESS FUEL.

**SK130
SK140_{LC}**



**SK460
SK480_{LC}**



**SK250
SK260_{LC}**



SK850_{LC}



**SK330
SK350_{LC}**



Photos may contain optional equipment.

KOBELCO INTERNATIONAL (S) CO., PTE. LTD.

60 Pandan Rd., Jurong, Shigapore 609294

Tel: +65-6268-8200 Fax: +65-6261-3719

www.kobelconet.com/shsg/

ONLY THE BEST FOR THE BEST



Our ambition to succeed is based on helping you succeed

Construction is a tough business; tough on people and tough on machinery. As the industry recognized leader in enhancing customer profitability we know that supplying the best in equipment is not enough. Advanced equipment has to be backed up by first class customer care. We are proud to possess the knowledge and expertise to help our customers, and proud of an organization that is truly focused in serving them.



Mr. Rao Kolli Sangameshwara,
Project Manager,
Lum Chang Building Contractors:
“We are very satisfied about
the choice of systems used
for our project. PERI offers us
an excellent formwork solution
for our project needs.”



PERI UP Rosett Flex in use.



PERI UP Rosett Flex in combination with
ST 100 Stacking Towers and the VARIO GT 24
Wall Formwork system.



Aerial view of the Bukit Panjang MRT Station.

High Productivity – High Flexibility – High Safety PERI solution for Singapore metro



PERI Asia Pte Ltd
Formwork Scaffolding Engineering
No.1 Sims Lane # 06-10
Singapore 387355
Phone +65 67 44 29 89
Fax +65 67 44 36 93
pha@periasia.com
www.periasia.com



FilterPress



*Techniwell
Pump TW 700*



Casing Rotator



Vibroflot

*Comacchio MC-15
Hydraulic Drill Rig*



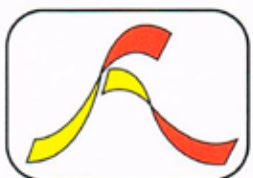
*FAR 250MR
Hydraulic Bore Pile Rig*



*FAV 30-400
Hydraulic Vibro Hammer*



*FAD-250
Desander*



FOUNDATION ASSOCIATES ENGINEERING PTE LTD

5, Tuas Avenue 1, Singapore 639490 Tel: (65) 6863 1633 Fax: (65) 6863 1455

Email: fnapl@singnet.com.sg Website: www.fnapl.com





HL GROUP

WORKING TOGETHER



The HL Groups of Companies first started out with Hup Leck Crane & Transport Service, and is incorporated since 1980 as a partnership.

Our HL Group of Companies has been incorporated progressively into a Total Logistics services, and with the rest of the companies forming up to provide services such as marine services, tug & barge rental, shipping agency, transportation, stevedoring, servicing centre, tyres services, manufacturing and warehousing.

HL Group (S) Pte Ltd is established on 18 July 1995 as Sales Agency, and to provide warehousing facility under the HL Groups of Companies. To date, we have progressively act as sole distributor for various strong and established Chinese made heavy machineries such as mobile cranes, crawler cranes, forklifts, aerial platform, excavators, and full range of trucks etc. HL Group has penetrated the range of Chinese heavy machineries into the local market arena with increasingly popularity, industry acceptance, and reliability. HL Group believes in fulfilling and meeting our various customer needs with reliable and strong after sales service, and providing assurance to our customers.

HL Group is the Sole Distributor for various brands in Singapore and regional areas

Sunward • Zoomlion • Runshare •
Sinoboom • Heli • Holdings • Shacman

Our achievements



Cert No. 98-2-0921
SS ISO 9001:2000



Scan for more info



HL GROUP (S) PTE LTD HOTLINE | 9792 6006 | T 6776 6006 | F 6262 6006 | 194 Pandan Loop, #04-08 Singapore 128383 | www.hlgrou.com.sg



LINDEN COMANSA

TOWER AND LUFFING-JIB CRANES



**LINDEN
COMANSA**

Construcciones Metálicas COMANSA S.A.

Tel. +34 948 335 020 | Fax. +34 948 330 810
export@comansa.com | www.comansa.com
Pol. Urbizkain, Crta. Aoiz Nº 1
31620 - Huarte (Navarra), SPAIN



**LINDEN
COMANSA
AMERICA**

Linden Comansa AMERICA LLC

Tel. +1 704 588 7729 | Fax. +1 704 588 3986
sales@lcacranes.com
www.lcacranes.com
11608 Downs Rd. Pineville NC 28134, USA



COMANSA JIE

Hangzhou Comansa JIE Construction Machinery Co. Ltd

Tel. +86 571 8299 5555 | Fax. +86 571 8299 6555
export@comansajie.com.cn
www.comansajie.com.cn
Jingjiang, Xiaoshan, Hangzhou P.C. 311223, CHINA

XCMG ranks 1st in China and 5th in the world in construction machinery industry. With up to 280 dealers, XCMG's business covers 169 countries and regions. XCMG is looking for professional distributors to act as authorized dealers for XCMG brand machineries, including concrete machinery, tower crane, heavy duty truck and special truck, in following areas:



1. Concrete machinery: Thailand, Vietnam, Burma, Mongolia, The United Arab Emirates, Saudi Arabia, Nigeria, Kenya, Russia, Kazakhstan, Uzbekistan, Tajikistan, Turkmenistan.

Contact : Mr. Denny Duan, XCMG Imp& Exp co., Ltd.
 TEL : +86 516 87892033 87892301
 FAX : +86 516 87892035
 EMAIL : concretemachinery@xcmg.com
 duanew@xcmg.com



2. Heavy duty truck and mining truck: Vietnam, Burma, Laos, Cambodia, Thailand, Philippines, Indonesia, Saudi Arabia, Mongolia, Kazakhstan, Algeria, Nigeria, Sudan, Kenya, Tanzania, Ethiopia, Peru, Argentina, Columbia, Ecuador, Mexico

Contact : Mr. Jack Gao, XCMG Imp& Exp co., Ltd.
 TEL : +86 25 52359925
 EMAIL : dutytruck@xcmg.com
 Haowei.gao@xcmg.com



3. Tower crane: Indonesia, Malaysia, Thailand, Philippine, Burma, South Korea, Mongolia, The United Arab Emirates, Kuwait, Saudi Arabia, Algeria, Russia, Kazakhstan.

Contact : Mr. Frank Liu, XCMG Imp& Exp co., Ltd.
 TEL : +86 516 87767266
 FAX : +86 516 87763896
 EMAIL : towercrane@xcmg.com
 liulin@xcmg.com



4. Truck-mounted crane, aerial working platform, tow truck, sanitation truck and bridge inspection platform: Saudi Arabia, Algeria, Angola, Mexico, Kazakhstan, Philippines, Indonesia, Russia, Columbia, Mozambique

Contact : Mr. Henry Shen, XCMG Imp& Exp co., Ltd.
 TEL : +86 516 87892887 87892802
 FAX : +86 516 87892802
 EMAIL : specialtruck@xcmg.com
 shenyu@xcmg.com

SOUTHEAST ASIA'S LONGEST-RUNNING CONSTRUCTION SHOW

PHILCONSTRUCT 2014

25th Philippine International Construction Equipment, Building Materials, Interior and Exterior Products Exhibition and Technology Forum

NOVEMBER 5-8

SMX Convention Center
& World Trade Center
Manila, Philippines

Incorporating:

HVAC/R
PHILIPPINES 2014

MINING
ASIA 2014

MAKE YOUR BUSINESS STAND OUT



19 countries
represented



1,100+ participating
companies



64,000+ trade
visitors



USD 102.5M worth
of on-site sales

Organized by:



Philconstruct Events,
Exhibitions & Conferences
Corporation

Co-Organized by:



Association of
Carriers & Equipment
Lessors, Inc.



Philippine
Constructors
Association, Inc.



Philippine Society of
Ventilating,
Air-conditioning, and
Refrigerating
Engineers, Inc.

Event Managed by:



Global-Link Exhibitions
Specialist Inc.

For more information, please contact:

GLOBAL-LINK EXHIBITIONS SPECIALIST INC.



(632) 750-8588



(632) 750-8585



info@globallinkmp.com / HVACR@globallinkmp.com

Interested visitors may pre-register at: www.globallinkmp.com

GO WHERE NO BOOM
HAS GONE BEFORE

WITH CONFIDENCE AT 185FT

INTRODUCING THE WORLD'S TALLEST SELF-PROPELLED BOOM LIFT. The new 1850SJ has more reach, better stability and a larger work envelope than any lift in its class. Get up to 19 stories of working height and an innovative chassis that can be extended front and back. Featuring 1,000 lb/500 lb platform capacity, the 1850SJ is the most powerful boom in the industry. Transport with ease in a regular size trailer — no oversized load permit needed. Learn more at www.jlg.com/1850SJ

www.jlg.com

South East Asia Office
Oshkosh-JLG (S) Technology Equipment Pte Ltd
29 Tuas Avenue 4, Singapore 639379
Phone: +65 6591 9030
Fax: +65 6591 9031

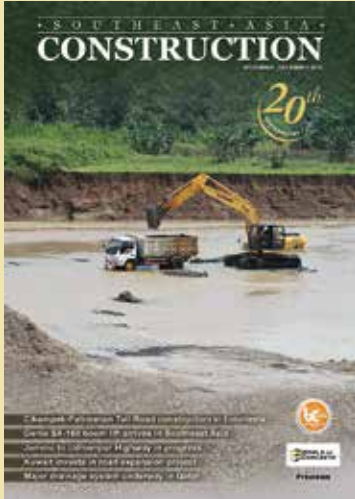
India Office
Oshkosh India Private Limited
Unit 1&3, Grand Plaza, The Grand
Nelson Mandela Road, Vasant Kunj
New Delhi - 110 070
India
Tel: +91 11 4289 0407
Cell: +91 9911110762

JLG
reachingout™

Contents

• S O U T H E A S T • A S I A •
CONSTRUCTION

nov/dec 2014



On the cover:
Construction of the Cikampek-Palimanan Toll Road in Indonesia.
(page 80)

Cover designed by Fawzeeah Yamin

Publisher
Steven Ooi
steven.ooi@tradelinkmedia.com.sg

Editor
Fabia Sugandy
seac@tradelinkmedia.com.sg

Group Marketing Manager
Eric Ooi
eric.ooi@tradelinkmedia.com.sg

Marketing Manager
Felix Ooi
felix.ooi@tradelinkmedia.com.sg

Assistant Marketing Manager
Jasmine Gan
jasmine.gan@tradelinkmedia.com.sg

**Head of Graphics Department/
Advertisement Coordinator**
Fawzeeah Yamin
fawzeeah@tradelinkmedia.com.sg

Graphic Designer
Siti Nur Aishah
siti@tradelinkmedia.com.sg

Circulation
Yvonne Ooi
yvonne.ooi@tradelinkmedia.com.sg

Any other matters : info@tradelinkmedia.com.sg

NEWS

News in Southeast Asia	12
News in Southeast Asia, Australia & New Zealand	18
News in East Asia	20
News in East Asia, South Asia & the Middle East	22
News in the Middle East & Europe	24
News in North America	26
IPAF Highlights	32

EVENTS

Calendar of Events	28
Industry Events	30

PRODUCTS

New In Industry	34
Mixed Category	38



My Ammann – Any job, any time.



Mixing engineer Dogan Keklik with his EasyBatch.

The EasyBatch was consistently designed with maximum mobility in mind. It is available with 90 t/h and 140 t/h capacity. This complete, stand-alone asphalt mixing plant fits onto just two trailers, and can be set up with no need for lifting gear. This makes the EasyBatch ideal for multiple relocations during the year, and it is ready to produce again within two days of a move. The plant was specifically designed to produce asphalt reliably and independently in regions with little developed infrastructure.

For more information on compaction machines, mixing plants and pavers go to www.ammann-group.com

AMMANN

Contents

PROJECTS & SPECIAL FEATURES

Applications On Site	44
Product Feature	62
Focus on India	66
Focus on the Middle East	70
Underground Construction	78
Road Project	80
Preview of bC India 2014	86
Preview of World of Concrete 2015	92



SOUTHEAST ASIA CONSTRUCTION is published six times a year by:

Trade Link Media Pte Ltd. RCB Registration no: 199204277K
 Address: 101 Lorong 23, #06-04 Prosper House, Singapore 388399
 Tel: +65 6842 2580, Fax: +65 6842 2581 / +65 6745 9517
 Website: www.tradelinkmedia.com.sg
 Email: info@tradelinkmedia.com.sg
 The company is a member of Association of Equipment Manufacturers (AEM)

The magazine is available free-of-charge to applicants in the building and construction industries who meet the publication's terms of control. For those applicants who do not qualify for free subscription, copies will be made available, subject to the acceptance by the publisher, of a subscription fee which varies according to the country of residence of the potential subscriber. Airmail (per year): Europe/USA - S\$150; Japan, Australia and New Zealand - S\$150; Malaysia and Brunei - S\$80; Singapore - S\$40; Rest of Asia - S\$120 (Incl. 7% GST Reg.: M2-0108708-2).

Printed in Singapore by Kim Hup Lee Printing Co Pte Ltd.
 MCI (P) 089/06/2013 • ISSN 2345-7082 (Print) and ISSN 2345-7090 (E-periodical) • KDN No: 1560 (1271)-(6)

Clause: The Editor reserves the right to omit, amend or alter any press release submitted for publication. The publisher and the editor are unable to accept any liability for errors or omissions that may occur, although every effort has been taken to ensure that all information is correct at the time of going to press. No portion of this publication may be reproduced in whole or part without the written permission of the publisher.

Disclaimer: All advertisers and contributors must ensure all promotional material and editorial information submitted for all our publications, must be free from any infringement on patent rights and copyright laws in every jurisdiction. Failure of which, they must be fully liable and accountable for all legal consequences (if any) that may arise.

INTERNATIONAL SALES OFFICE:

T. Asoshina/Shizuka Kondo, ECHO Japan Corporation
 Grande Maison Rm 303, 2-2, Kudan-Kita 1-Chome, Chiyoda-ku, Tokyo 102, Japan
 Tel: +813 3263 5065, Fax: +813 3234 2064
 Email: aso@echo-japan.co.jp



Simply Reliable

Electric Scissor Lifts



Skyjack's DC Electric Scissor range offers an easy to service low maintenance design in a compact and versatile package. Electrically powered and quiet with zero emissions, all models are capable of maneuvering in the smallest spaces. These are the world's top selling aerial work platforms.

***Key highlights include:**

- Low gross weight produces low floor loading allowing use in more areas
- Clevis design on scissor provides increased rigidity and lower stress and fatigue on joints
- Wide scissor stance increases stability and provides a more secure feeling with the operator
- Unmatched maneuverability and compact footprint
- Working heights between 21' (6.4 m) and 38' (11.6 m)

*Some features model dependent

SKYJACK
simply reliable

Vertical Mast Lifts • **Electric Scissor Lifts** • Rough Terrain Scissors • Articulating Booms • Telescopic Booms • Telehandlers

For information call 1-800-265-2738 or visit us online at www.skyjack.com

Singapore ‘most attractive market for infrastructure investment’

Singapore is the most attractive market in the world for investment in infrastructure, according to the global natural and built asset design and consultancy firm Arcadis. The findings come from the second Arcadis Global Infrastructure Investment Index, which ranks 41 countries by their attractiveness to investors in infrastructure. In order to gauge their appeal, the study looked at various factors including the ease of doing business in each market, tax rates, GDP per capita, government policy, the quality of the existing infrastructure and the availability of debt finance. Combining all of these factors provided a comprehensive overview of the risk profile for each market and how attractive each one is likely to be to potential investors.

Apart from Singapore, other countries in Asia Pacific that have made it to the list include Malaysia, Australia, Japan, China, Thailand, South Korea, Indonesia, India and the Philippines.

“Infrastructure is the backbone of a country and a catalyst for its long-term economic development. With Singapore’s population predicted to grow from 5.5 million to 7 million people by 2030, investment in new infrastructure will be imperative. However, unlike many cash-strapped markets in Asia, Singapore is self-sufficient in financing and managing its infrastructure projects so the opportunities for funds may lie in managing existing assets to ensure they are as productive as possible,” explained Richard Warburton, head of Infrastructure for Asia at Arcadis.

Singapore’s integrated strategic plan linking infrastructure planning with business and social requirements helped retain its

top position in Arcadis’ index as the most attractive global market for infrastructure investment. However, the government is capable of self-financing most major projects so investment opportunities, such as the recently opened Singapore Sports Hub, are limited. Investors are continuing to focus on more commercial real estate investment to capitalise on Singapore’s ongoing growth.

Emerging markets in Southeast Asia such as Malaysia, Thailand, Indonesia and the Philippines are trying to improve their business environment for foreign investment through infrastructure development. Due to the lack of funding, they offer more opportunities for investors in infrastructure. The governments are actively encouraging the private sector to take a delivery role in infrastructure projects.

“A key differential that we have seen in Asian markets like Singapore is that they have clear integrated strategies that tie the infrastructure development plans to business and economic objectives. This gives long-term clarity to investors and is something that European markets, in particular, would do well to emulate if they are to succeed in attracting more private finance into infrastructure,” said Mr Warburton.

The report also explored the factors that governments, infrastructure owners and operators need to consider in order to attract private finance.

“Countries that have created the right political environment for sustained long-term economic growth and have attractively structured infrastructure schemes will stay ahead of the competition to attract international investors,” concluded Mr Warburton. ■

Volvo appoints East Timor dealer

East Timor (known as Timor-Leste) is located on the eastern half of the island of Timor in Southeast Asia. The country’s government has announced a 20-year strategic development plan to improve education, healthcare and infrastructure. This has led to increased demand for construction equipment and to help meet this growing demand, Volvo Construction Equipment (Volvo CE) has appointed its first representative for the country, Tjing Fa Ho. The company will offer the local market a range of Volvo tracked and wheeled excavators, articulated haulers, wheel loaders, compactors and asphalt pavers.

Tjing Fa Ho was appointed to represent Volvo CE in May 2014, and soon after that the company made its first sale to Star King Construction, a road construction and maintenance specialist. The Volvo EW145B wheeled excavator is expected to be used across a number of road widening projects around East Timor’s capital of Dili and surrounding districts. Star King Construction was founded in 2012 and has projected revenues of US\$20 million over the next 12 months.

“The Volvo brand is recognised for its quality and machine uptime, two key features that our customers are looking for here in Timor-Leste,” said Jackson Lay, managing director at Tjing Fa Ho. “We are delighted to partner with such an established brand of construction machinery and our service technicians and sales staff have undergone rigorous training through Volvo’s global training programme to give us the product knowledge we need to best serve our customers.”

“There are a number of opportunities in the infrastructure segment, especially relating to road rehabilitation and construction.



Tjing Fa Ho now offers the East Timorese market a range of Volvo tracked and wheeled excavators, articulated haulers, wheel loaders, compactors and asphalt pavers.

Volvo offers one of the largest ranges of road building equipment in the world, and we are certain that with Tjing Fa Ho’s extensive knowledge of heavy equipment and the local market, the team will do an excellent job of supporting our product sales and offering customers effective service support in the field,” commented Christopher Lee, Volvo CE’s business director for the Timor-Leste market. ■

TOUGH WORK MADE EASY

Mining sites and mega construction projects are some of the toughest work locations for Man and machine. At TRXBUILD, we relish the challenge of getting the job done on time, every time. Engineering productivity is the essence that powers every TRXBUILD machine around the world that we operate in. Tough work made easy –

that's the TRXBUILD promise!



Megaworld develops luxury estates in Philippines

Megaworld, a leading residential condominium and office developer-landlord in the Philippines, plans to develop McKinley West – an ultra-high-end township on a 34.5-ha former JUSMAG (Joint US Military Assistance Group) property in Fort Bonifacio, adjacent to Forbes Park and Manila Polo Club in Manila, the Philippines.

The company is spending US\$1 billion over the next 10 years to build the township. As well as featuring a residential village, McKinley West will host a series of luxury residential estates – designed by Broadway Malyan.

Some of the properties will have swimming pools, state-of-the-art security features and first-of-their-kind luxury amenities. Two- to four-bedroom suites will cover up to 350 sq m, with penthouse suites featuring two-level floor-to-ceiling windows and private infinity swimming pools. McKinley West will also include a business park with modern office towers, as well as commercial and retail buildings. ■



Megaworld is developing an ultra-high-end township in Fort Bonifacio, the Philippines. The project will feature a residential village and a series of luxury residential estates – designed by Broadway Malyan.

SDLG enhances aftermarket support in Southeast Asia

Shandong Lingong Machinery Co Ltd has opened a new SDLG parts warehouse in Singapore to serve the Southeast Asian markets. The company currently sells a range of SDLG wheel loaders and motor graders in the region – with other road and construction equipment products set to launch this year.

“We are proud to be one of the first Chinese manufacturers to open a parts depot in Southeast Asia,” said Anthony Neo, director of SDLG sales support in the region. “By having all of the common consumable parts for our expanding product range on our customers’ doorstep, we are improving SDLG parts availability and service response time to improve machine uptime for our customers.”

Mr Neo added, “The most important factor for our customers when purchasing a new piece of equipment is machine uptime. Having reliable and trustworthy technicians to attend to any service or maintenance issues on site is extremely important – as is easy access to spare parts. With Southeast Asian markets being a key focus for SDLG, we are doing all we can to improve product support for our customers.” ■



Shandong Lingong Machinery has opened a new SDLG parts warehouse in Singapore to improve parts availability and service response time in the Southeast Asia region.

ADB supports public-private hydropower project in Laos

The Asian Development Bank (ADB) is supporting a 290 MW hydropower project in Laos under a public-private partnership arrangement. The Bank has signed financing agreements for an assistance package consisting of a US\$50 million direct loan, a Bt3.04 billion (equivalent of around US\$95 million) baht-denominated loan, and a B loan of US\$72 million for the Nam Ngiep 1 hydropower project.

The B loan is funded by the Bank of Tokyo-Mitsubishi UFJ, Sumitomo Mitsui Banking Corporation and Mizuho Bank, with ADB acting as lender of record. The project will also be financed by Japan Bank for International Cooperation and four Thai banks.

Laos has a hydropower potential of 20,000 MW from its river networks, and is strategically located to become the ‘battery’ of the Greater Mekong Subregion, explained ADB. The bulk of the hydropower generated by Nam Ngiep 1 will be delivered to neighbouring Thailand, which relies heavily on its dwindling natural gas reserves. With the use of hydropower, it is expected that around 500,000 t of carbon dioxide emissions can be avoided in Thailand every year, said the Bank.

Aside from the exported power, the project – expected to start operations in 2019 - will likewise supply power domestically and raise the Laos’ household electrification rate. The project will be constructed by the Nam Ngiep 1 Power Company (NNP1PC), jointly owned by Kansai Electric Power of Japan, EGAT International of Thailand and the government of Laos.

The project will be constructed on the Nam Ngiep River in the provinces of Xaysomboun and Bolikhamxay in Laos. It consists of a main power station, a reservoir of 67 sq km, a re-regulation power station and a 125 km transmission line to connect the main power station to the Nabong substation near the capital Vientiane.

According to ADB, NNP1PC had engaged with communities affected by the project in the preparation of environmental and social safeguard plans. Based on these consultations, the plans were drafted to responsibly resettle the project affected people with livelihood restoration and social development support and to conserve biodiversity. The Bank said the project has incorporated best international safeguard practices in mitigating impacts on the people and environment. ■

MTU非公路用发动机
上海宝马展 (Bauma China) 2014, 上海
2014年11月25日至28日
展位N5.148

重大项目、胸有成竹： MTU非公路用发动机。 无论环境、强劲如一。

基于梅赛德斯的技术且由MTU按照非道路应用优化的1000-1500系列发动机，任何时候都值得您的信赖。出色的可靠性、燃油效率并获得欧盟IV阶段及美国环保署第4阶段最终排放标准证书的柴油机，任何时间、任何地点只要客户需求，都将获得专家的售后及现场服务支持。

www.tougher-whatever-the-conditions.com



1300 系列



Power. Passion. Partnership.

Hydro International establishes Singapore office



Hydro International, a leading global provider of solutions for the control and treatment of stormwater and wastewater, has opened an office in Singapore as a centre for its growing business across the Asia Pacific region. The company has appointed Andy Tang (left) as APAC regional business manager to run the Singapore office and develop sales distributorships across the region.

Mr Tang has more than 18 years of experience in senior sales management posts in the pumps and hydraulics industry in Singapore, notably with Boerger Pumps, Fuglesangs and Viking Pumps. In his new role, Mr Tang's brief is to establish a platform for the introduction and support of Hydro's innovative and brand-leading vortex control and separation technologies. He will be responsible for developing Hydro's business in Malaysia, Singapore, Indonesia, Philippines, Thailand, Vietnam, Myanmar, Australia and New Zealand.

"I have been very impressed by Hydro's vortex-based control and separation technologies and their no-power, no-moving parts design.

Many countries in the region are prone to periods of intense, sudden rainfall leading to flooding and river pollution. Hydro's products are well-placed to address the growing desire to improve surface water control and treatment," said Mr Tang.

"I also expect to see growing interest for Hydro's wastewater grit removal systems, which promise operators new approaches to improving equipment performance and plant maintenance by eliminating harmful grit from downstream works," he added.

Hydro's proven record in the region includes orders for more than 100 Downstream Defender vortex separators to improve surface water quality as part of the River of Life project in Kuala Lumpur, Malaysia. Hydro has also seen significant interest in its wastewater grit removal solutions, and for its brand-leading Hydro-Brake vortex flow controls and Vortex Drop shaft technologies.

"After significant sales growth in recent years, Hydro is now keen to consolidate its successes and grow its business potential in APAC," said Clive Evans, Hydro's international business director. "Hydro is moving closer to the international markets it serves, providing a higher-profile and responsive service to customers in the region." ■

BESIN-UEN Consortium to build second NEWater Plant at Changi

PUB, Singapore's national water agency, has selected BESIN-UEN Consortium as the preferred bidder for the second NEWater Plant at Changi. As the preferred bidder, BESIN-UEN Consortium, led by BEWG International Pte Ltd and UE NEWater Pte Ltd will form a concession company to enter into a NEWater Agreement (NWA) with PUB by October 2014. The NWA will take full effect once all agreements have been finalised and executed, and the concession company achieves financial close.

The plant is expected to commence operations in 2016 and will add another 50 million gallons (mgd) of NEWater per day to the nation's water supply. Similar to the first NEWater Plant at Changi, the second plant will be constructed under a Design, Build, Own and Operate (DBOO) arrangement and utilise the same NEWater

technology and process pioneered by PUB.

The second NEWater Plant at Changi is PUB's fifth DBOO project between PUB and the private sector, the first four being the 30 mgd SingSpring desalination plant, the 32 mgd Keppel-Seghers Ulu Pandan NEWater Plant, the 50 mgd SembCorp Changi NEWater Plant and more recently, the 70 mgd Tuaspring Desalination Plant.

NEWater is one of PUB's Four National Taps, a long-term water supply strategy to ensure a robust and sustainable supply of water for Singapore. The other three sources are water from local catchments, imported water from Johor and desalinated water. According to PUB, NEWater currently meets 30 percent of Singapore's water demand, and this is set to increase up to 55 percent in the longer term. ■

LiuGong wins BEI Asia Award

LiuGong has received the Distinguished Award of the Year 2014 at this year's BEI Asia Awards in Singapore. The BEI Asia Awards recognise, reward and honour the achievements of leading enterprises across Singapore's Built Environment Industry (BEI). The awards acknowledge both local and locally-based companies who have demonstrated excellence in establishing successful businesses while engaging in best business practices such as corporate social responsibility through sustainable efforts.

"This recognition will spur us on to continue our pursuit of excellence in the manufacturing of construction equipment placing technology, quality and environmental performance in the forefront of our global pursuits," said Joseph Wong, vice president of LiuGong. ■



Joseph Wong (right), VP of LiuGong, receives the Distinguished Award from Vivian Balakrishnan, Singapore's Minister for Environment and Water Resources.



NOVEMBER 25-28, 2014

OUTDOOR BOOTH: H09

SHANGHAI NEW INTERNATIONAL EXPO CENTRE



www.cndingli.com



ZHEJIANG DINGLI MACHINERY CO.,LTD.

Tel: +86-572-8681688 Fax: +86-572-8681690 market@cndingli.com export@cndingli.com
Add: No.1255 Baiyun South Road, Leidian Town, Deqing Zhejiang China
<http://www.cndingli.com>



Skyjack receives major order

Skyjack has received an order for 40 vertical mast lifts from Force Australia, and they will be put to work immediately on a major infrastructure project in South Australia.

The new lifts will be delivered to Adelaide, one of 16 locations in the Force national network. Their first job will be on the construction of the new Royal Adelaide Hospital (RAH). The healthcare facility is being built for the South Australian state government. It will be run by the SA Health Partnership Consortium and is believed to be the single largest infrastructure project undertaken in South Australia.

John Glover, national service manager at Force Access, said the simplicity and reliability of the Skyjack units made them a popular choice for the company's fleet. "The equipment is reliable, easy to use and has great customer acceptance," he said. "Our customers look to us to provide them with equipment as and when they need it, and more than that they want solid, proven machines that deliver consistently, so we're continuing to grow our fleet with exactly that kind of equipment."

With their compact footprint and excellent manoeuvrability, the machines will be well-suited to the busy RAH project, giving subcontractors and other workers access to difficult to reach workspaces. The SJ 12 has a work height of 5.48 m, while the SJ 16 has a 6.58 m work height, and both have a traversing platform of 0.41 m for greater access at height and the ability to work above or over in-situ obstacles. Both fold down to 0.45 m tall x 0.76 m wide x 1.79 m height, with weights of 782 kg and 966 kg respectively. ■



Skyjack has received an order for 40 vertical mast lifts from Force Australia.

Kato launches Thailand subsidiary

Japanese manufacturer Kato Works has established a wholly owned subsidiary in Thailand, under the slogan 'progress to the next stage'. The company aims to expand its business in the global market by focusing on the manufacture of construction equipment in Thailand, as well as set up an overseas base of operations in order to strengthen its international sales networks and reduce costs.

According to Kato, several production lines in its Japan factory will be transferred to this new facility. The products manufactured in Thailand are intended for the worldwide market, especially in Southeast Asia.

The Thailand subsidiary is Kato's second overseas foothold. In 2006 the company established a factory in China, which manufactures hydraulic excavators. ■

Atlas Copco acquires compressor business in NZ

Atlas Copco has acquired the compressor distribution and service business from the Lancaster Group in New Zealand. The acquired businesses are those of Ash Air (NZ) Ltd, Fox Air NZ Ltd, MBAR 2011 Ltd and Ash Air Oil & Gas Ltd.

The businesses, located throughout New Zealand, had combined revenues in fiscal year 2013 of approximately NZ\$30 million and around 120 employees. The businesses provide high-quality sales and service of industrial compressors and related equipment to a broad range of customers in the region.

"By acquiring this group of high-quality distributors we will further expand and strengthen our presence in New Zealand," said Nico Delvaux, president of Atlas Copco's Compressor Technique business area. "These businesses will complement our existing organisation well and will serve as a strong base for further growth."

The businesses will be part of Atlas Copco's Compressor Technique business area. ■

Terratech Engineering inaugurates new office

Geotechnical specialist contractor Terratech Engineering Pte Ltd has established an office at Woodlands Industrial Park, Singapore. Currently under the stewardship of Eric Low, the company is able to take on small to large projects, carrying out works such as jet grouting, grout mix piling, permeation grouting and micropiling, among others. ■

Vietnam's Song Bung 4 hydropower project reaches important milestone

A major milestone has been achieved on Vietnam's Song Bung 4 hydropower project with the closure of the river diversion and start of reservoir impoundment. Mott MacDonald has acted as owner's engineer and technical advisor on the US\$250 million project since 2009.

The first major hydropower project in Vietnam to be funded by the Asian Development Bank, the 156 MW scheme involves construction of a 110 m high roller compacted concrete dam, a 3.2 km long headrace tunnel of 7.2 m diameter and a 16 m diameter surge shaft, as well as an intake structure and powerhouse. Mott MacDonald has provided construction supervision, contract management and specialist technical support to Electricity Vietnam, through its management unit Song Bung 4 Hydropower Management Board.

"Over the last 12 months it has been a race against time to complete the dam before this year's rainy season so there is a great sense of achievement to reach this project milestone. The challenges we've faced have been met by the development of good, open working relationships between the client, contractors, designer and our site supervision team and a proactive approach to problem solving," said Andrew Kirby, Mott MacDonald's project manager.

"Vietnam is experiencing rising electricity demand of over 15 percent per year and this project will help to meet increasing power demands, whilst reducing reliance on fossil fuels," added Mr Kirby.

The Song Bung 4 plant is expected to be operational by the end of 2014. ■

TOUGH WORLD. TOUGH EQUIPMENT.



LIUGONG AUTHORISED DEALERS:

South East Asia Region

Cambodia - Tom Engineering Machinery
00855.23998231

East Timor - Global Equipment Trading
00670.331.0440

Indonesia - PT. Panca Traktor Indonesia
0062.21.29025810

Indonesia - PT. Tekacia Machinery Jaya
0062.511.470.5955

Laos - VK Trading
0085.6.021265058

Malaysia - CIH (Malaysia) Sdn. Bhd.
00603.8068.4888

Myanmar - Aung Gyi Trading Ltd
00951.613629

Philippines - Qishu Heavy Equipment
0063.2.7491215

Singapore - Ten League
0065.68620769

Taiwan - Feng Yue Li Enterprise Co. Ltd
00886.4.737.6868

Thailand - Yontrakarn Machinery
0066.35.361495

Vietnam - Seabird Trading Company
0084.4.35372815

Oceania Region
Australia - Niche Equipment
0061.8.945751600

French Polynesia and New Caledonia
- Royal Automobile 00689.504.106

New Zealand - Lincom NZ Pty Ltd.
0064.9.2362008

Papua New Guinea - Karridale Limited
00675.323.7004



LiuGong offers a full line of best in class, extreme duty, intuitive machines. You can be sure if you purchase a LiuGong machine, you're getting maximum control and simplicity. They are easy to operate and maintain, even in the world's toughest environments.

LIUGONG MACHINERY ASIA PACIFIC PTE. LTD
7 Tuas Loop, Tuas Connection
Singapore 637339
+65 6686 3566



facebook.com/LiugongMachineryAsiaPacificPteLtd

 **LIUGONG**

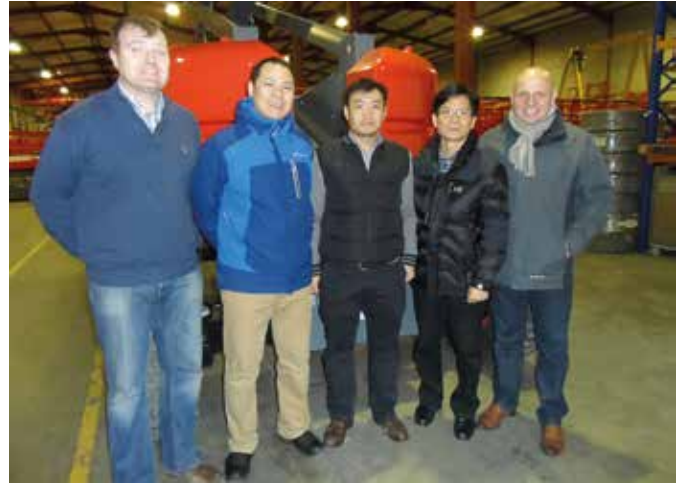
www.liugong.com

Skyjack expands in Asia with new appointments

Skyjack has expanded its global sales and service network with the addition of new staff covering the Asia Pacific region. Among the biggest regional users of Skyjack platforms is South Korea and in this market, the company has appointed two executives. Steve Paik is the new sales manager for South Korea, while Unseob Kim has been appointed product support manager. Mr Paik was previously at South Korea's Caterpillar dealership where he spent 19 years in a variety of roles, including regional management and product and parts sales. Mr Kim, meanwhile, joins Skyjack from one of South Korea's largest AWP rental companies. Although based in Seoul, Mr Kim will also be supporting other Skyjack customers in Vietnam, Japan and Thailand.

In China, Jack Dai is Skyjack's new sales manager for the country and Frank Zhang has been named as product support engineer. With 10 years' experience in sales and marketing, including four years working as a sales manager for an AWP company in China, Mr Dai will be responsible for growing Skyjack sales in the country and further developing the company's growth strategy for China. Mr Zhang, meanwhile, brings with him 10 years of experience in construction equipment maintenance from the Chinese operations of crane manufacturer Terex-Demag. Although based in Shanghai, Mr Zhang will also cover Singapore, Taiwan, Malaysia, Indonesia and the Philippines.

Leading the team will be Simon Cracknell, Skyjack's business development director – Asia. "The brand is still quite new to a lot of customers in this region but we're already seeing strong interest in our range of simple and reliable work platforms," he said.



Some of the new Asian team members from Skyjack during their IPAF training session.

All new members of the Skyjack team travelled to the company's UK facility for intensive training on products, design, manufacturing and support; and all were given full insight into the culture of the global organisation. Included in this visit was an operator training course, conducted to IPAF standards which all the new team members passed. This gives them a complete understanding of operating Skyjack platforms and helps emphasise the importance of safety in the industry. ■

'Window of Guangzhou'

Atkins has been appointed by China Communications Construction Company (CCCC) to provide architecture services from concept through to extended preliminary design stage for the new 'Window of Guangzhou' development (right). Due to be completed in 2018, the project consists of three stand-alone buildings that will house high-end office space. Two of the buildings resemble 'floating' windows and the other tower stands at 208 m tall.



From a distance, the development reads as '001', which symbolises Guangzhou as the first Chinese city open for international trading as a port for the ancient Silk Road several dynasties ago and again revitalised in the late 1970s. Atkins said it has also incorporated green architecture design principles such as solar shading and air flow through the buildings to provide shelter from sun and rain typical in this hot and humid part of southern China. ■

Broadway Malyan to design Chengdu Creative Centre

Broadway Malyan has won an international competition to design the Chengdu Creative Centre – the first phase of a new urban district in Chengdu, the capital of Sichuan province and a major city in Western China. The new high-tech business park and mixed use centre will form the high-profile gateway to the new district, which will be named Tianfu New Town.

According to Broadway Malyan, drawing inspiration from the local surroundings, the masterplan will create an integrated web of office, retail and green public spaces focussed around a statement 110 m central

tower. The development will set the tone for the future growth of Tianfu New Town and create a new benchmark for sustainable development in the region by halving current energy consumption standards.

Broadway Malyan worked in partnership with Shanghai-based designers the East China Architectural Design & Research Institute (ECADI) and environmental engineers Cundall to beat five international teams in the competition, which was commissioned by the Chengdu Tiantou Real Estate Development Company Limited. ■



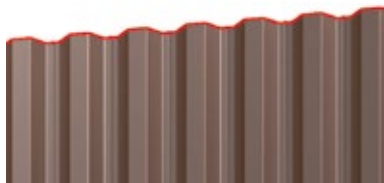
Broadway Malyan has won a competition to design the Chengdu Creative Centre.

GIKEN IMPLANT FOUNDATIONS

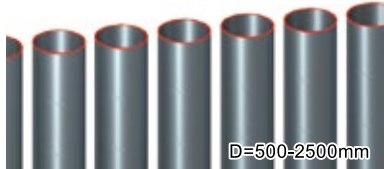
Embedded piled retaining walls and foundations installed by the Press-in Method

Giken Tubular Pile Wall: Cofferdam for water retention of 10m

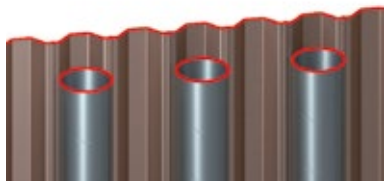
Giken Walls



Giken Sheet Pile Wall

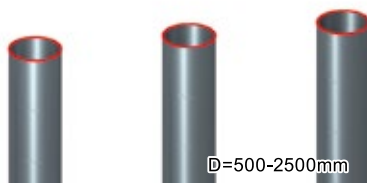


Giken Tubular Pile Wall

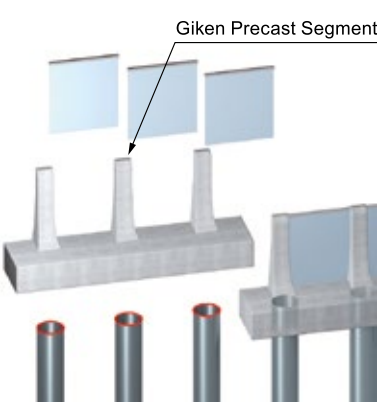


Giken Combi-Gyro Wall

Giken Foundations



Tubular King Pile Foundation

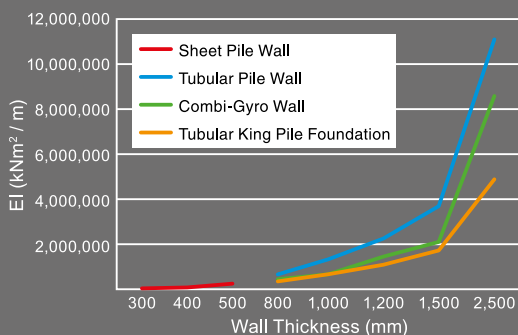


Giken Barrier

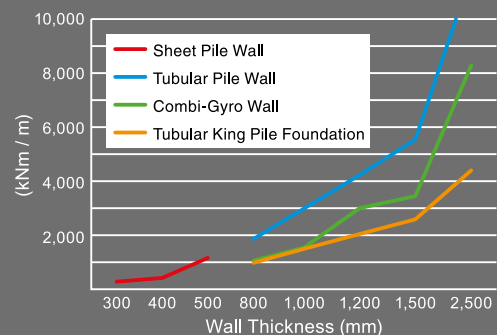


Giken Hydraulic Press-in Method

Typical Bending Stiffness



Typical Bending Moment Capacity



Mott MacDonald to work on major projects in Japan and China

Mott MacDonald will supervise construction of Japan's new solar photovoltaic (PV) plant, the approximately US\$1.1 billion Kuni-Umi facility in the city of Setouchi. It is believed to be the largest solar PV plant in the country.

Mott MacDonald acted as owner's engineer during the development phase of the project, which has successfully reached financial close. Construction will be undertaken by Toyo Engineering Corporation and Shimizu Corporation.

The 230 MW Kuni-Umi plant fits in with Japan's broader strategy to diversify its power generation capabilities. It will sell electricity for a 20-year period to the Chugoku Electric Power Company and will include a new 110 kV, 16 km underground transmission line that will travel through a residential area and cross several major rivers.

Mott MacDonald assessed plant performance and drafted plant test procedures, supported contract negotiations and advised on procurement during the development phase of the project. The company will now supervise civil, electrical, structural and instrumentation system implementation work and review detailed plant designs against local codes and international practice for solar PV projects. The plant is due to become operational in 2019.

In addition, Mott MacDonald has been appointed by the Shanghai

Water Authority to provide technical support for the third phase of the Shanghai Urban Environment Project in China. The project aims to improve the water supply quality and levels across the network. Funded by the World Bank, it also seeks to grow China's economy in an environmentally and institutionally sustainable manner.

Shanghai's main source of water is from the Huangpu River, which runs through a number of administrative provinces before reaching the city. The Shanghai Water Authority measures water quality and identifies contamination in the river before it enters the water system via a city-wide monitoring network and control centre.

Mott MacDonald will provide technical expertise to develop a thorough study of the Shanghai water sector. This will involve assessing and developing the authority's water demand management regulations, promoting a public education and awareness programme, studying water lost before it reaches the customer, demanding profile management and enhancing a water reclamation programme to make productive use of wastewater.

Mott MacDonald will also carry out a water supply risk assessment to improve water provision security. This will include a water resources strategic planning study, a vulnerability assessment for water utility companies and emergency planning training for water utility staff. ■

ADB helps Sri Lanka to tackle poor rural roads

The Asian Development Bank (ADB) has approved an US\$800 million loan facility to fund rural and national road upgrades in six provinces in Sri Lanka that will significantly improve access of remote communities to markets, services and jobs.

The Integrated Road Investment Program, or so-called 'iRoad' in Sri Lanka, will upgrade about 2,200 km of rural access roads, and rehabilitate and maintain about 400 km of national roads under five projects in the Southern Province, Sabaragamuwa Province and the Kalutara District of Western Province, Central Province, North Central Province and the North Western province.

It will also provide training and support to help national, provincial and local agencies manage the road network more effectively. The project is expected to be finished by mid 2024.

According to ADB, the project will ensure that women are closely involved in the design, improvement and maintenance of the rural access roads. About 30 percent of local employees hired for road maintenance will be women who are paid equal wages for equal work. The roads will also include safety features that take into account the needs of the elderly, women, children and disabled in the community.

The Sri Lanka government's national strategy for 2010-2020 said poor quality infrastructure is a key constraint to its goal of rapid economic growth and lower poverty, and has estimated the cost of upgrading rural access routes at US\$1.8 billion. As well as ADB, the government has also asked the Japan International Cooperation Agency to finance road projects in other areas. ■

UNStudio wins Qatar railway project

Qatar Rail has appointed Dutch architectural firm UNStudio as principal architect for the Qatar Integrated Railway Project (QIRP). The goal of the QIRP is to create a service that will promote the use of public transportation as a valid alternative to private transportation for the population of Doha.

The Metro Network forms the key component of the QIRP, with phase 1 planned to include around 35 stations and phase 2, around 60 stations, and will serve as the backbone of the public transport system in the Greater Doha Area (GDA). The full network is planned to comprise four lines connecting the GDA as well as the Al Khor and Al Wakrah-Mesaieed communities, located north and south of Doha, respectively. ■



UNStudio designs over 30 stations in Phase One of the Doha Metro Network.

VERMEER HELPS MEET

YOUR TOUGHEST PIPELINE CHALLENGES.



THIS IS WHERE THE NAME ON THE MACHINE MATTERS MOST. Whether you're facing crosscountry installations or long crossing, Vermeer and our global dealer network will be right beside you. We know the conditions you face are demanding – that's why we make sure our equipment is up to the task. From heavy-duty trenchers to maxi-sized horizontal directional drills, whenever the jobsite, we'll be ready. So when it's tough going out there, look to Vermeer – the trusted name for proven equipment and reliable support.

Vermeer Asia Pacific
Tel: 65-6516 9560
Fax: 65-6515 9218
Email: vapinfo@vermeer.com
VERMEER.COM

Vermeer

**EQUIPPED TO
DO MORE.**

Sandvik appoints Turkey distributor and new vice president

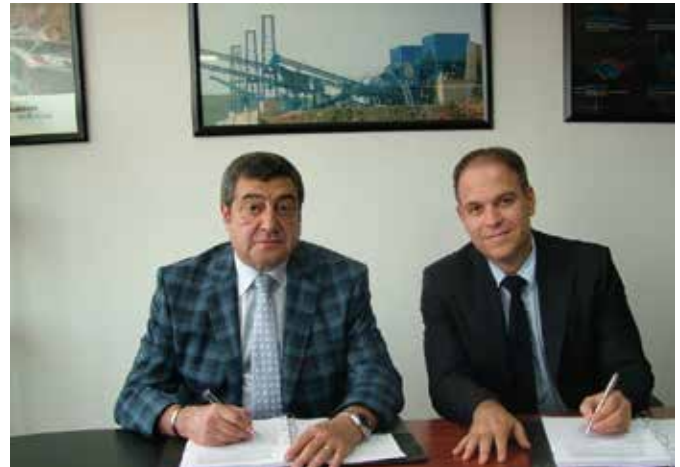
Sandvik Construction has appointed Kaletek Makina Diş Ticaret Ve Sanayi Limited Şirketi as the new distributor for Sandvik range of rock tools in Turkey. Apart from supplying the comprehensive range, Kaletek will also be providing product support through full aftermarket care, spare parts and dedicated customer service.

Kaletek is an established name in the ground foundation and water drilling industry in Turkey, with offices, workshops and service engineers located throughout the country. This makes the company an excellent partner to supply Sandvik's rock drilling tools and consumable products. And when the situation requires it, Kaletek will be able to call on round the clock support from Sandvik Construction's Turkey office.

Central Europe appointment

In another development, Sandvik Construction has appointed Martin Friedl as its new vice president for Central Europe sales area. Mr Friedl is succeeding Hans Schuller who left Sandvik in June for new challenges outside the company. Mr Friedl will take on this new role in addition to his current one as sales area manager for Russia.

According to Sandvik Construction, Central Europe represents a large opportunity for Sandvik due in no small part to the upturn of the German market, and the potential of the Eastern European markets. Mr Friedl brings to his new role a wealth of experience from within both the construction industry and many years with Sandvik. He is thus seen as the ideal person to capitalise on the opportunities presented by such buoyant market conditions. ■



Above: Kaletek is now the distributor for Sandvik range of rock tools in Turkey.

Left: Martin Friedl has been appointed as Sandvik Construction's vice president for Central Europe sales area.

Vinci plays major role in key road and tunnel projects

A new section of the A9 motorway between Berlin and Munich in Germany is now open to the public. A public-private partnership (PPP) project, it covers a 46.5 km stretch between Triptis and Schleiz in Thuringia.

Carried out by Via Gateway Thüringen, a company jointly owned by Vinci Concessions and BAM PPP, the new section is said to be the first German motorway project involving remuneration based on availability for traffic. This approach, known as a V-Modell contract, is becoming the rule for motorway projects under development in Germany; whereas the A-Modell contract used to include remuneration based on actual traffic using the infrastructure.

The contract, worth a total of €220 million, came into force in October 2011. It covers financing, design, widening of 19 km to three-lane dual carriageway and renovation of 27.5 km, followed by operation and maintenance of the entire section for 20 years. The project was supervised by the Thuringian Land authority and DEGES, the state-owned institution in charge of major transport infrastructure projects, on behalf of the German government.

The works, which took three years to complete, were awarded to a construction consortium comprising Vinci subsidiary Eurovia (leader) and Wayss & Freytag Ingenieurbau, a Royal BAM subsidiary.

In addition, Vinci Construction Grands Projets, working in a 50-50 joint venture with Costain, will build the Shieldhall tunnel in Glasgow for Scottish Water, the publicly owned water company in Scotland.

The structure, believed to be the largest wastewater storage tunnel in Scotland, is designed to improve water quality and help cope with the risk of flooding in the city and pollution of the River Clyde.

The contract, with a value of €105 million, covers the construction of two shafts with a diameter of 15 m each and a depth of 20 m, a 300 m long cut-and-cover trench and a 5 km tunnel with an internal diameter of 4.70 m. The technique used will be that of a mud pressure type tunnel boring machine, one of the company's areas of expertise.

Work is expected to start in October 2014 and completion is anticipated in early 2018. ■

Parsons wins additional work related to Dubai Water Canal Project

Parsons has been selected by the Roads and Transport Authority (RTA) to perform infrastructure design services for the Dubai Water Canal Project. Planned to be a major tourist destination, the Dubai Water Canal will include a new shopping centre, hotels and restaurants, in addition to luxury housing and cycling paths. It is expected to provide new areas for public places and facilities,

as well as private marinas for boats and a new trade centre at the canal's entrance.

A Parsons joint venture was selected by RTA to perform construction supervision services for the Dubai Water Canal Project earlier this year. Once completed, the project will add 6 km to the Dubai waterfront and will attract many visitors. ■

Made in Japan. Work for All.



NK-300VR

 **30ton**



SR-300L

 **30ton**



SR-700L

 **70ton**



NK-550VR

Right hand and Left hand steering can be chosen.

 **55ton**

KATO
KATO WORKS CO.,LTD.

9-37, Higashi-ohi 1-chome, Shinagawa-ku, Tokyo, 140-0011, Japan
Telephone : +81(0)3 3458-1115 Email : marketing@kato-works.com

www.kato-works.co.jp

Mexico City to build new international airport

Foster + Partners, FR-EE (Fernando Romero Enterprise) and NACO (Netherlands Airport Consultants) have jointly won the international competition to design Mexico City's new international airport. At 555,000 sq m, it is set to be one of the world's largest airports.

With spans in excess of 100 m, three times the span of a conventional airport, it has a monumental scale inspired by Mexican architecture and symbolism. The maximum span internally is 170 m. The lightweight glass and steel structure and soaring vaulted roof are designed for Mexico City's challenging soil conditions. Its unique pre-fabricated system can be constructed rapidly, without the need for scaffolding – the airport will be a showcase for Mexican innovation, built by Mexican contractors and engineers.

The entire building is serviced from beneath, freeing the roof of ducts and pipes and revealing the environmental skin. This hardworking structure harnesses the power of the sun, collects rainwater, provides shading, directs daylight and enables views – all while achieving a high performance envelope that meets high thermal and acoustic standards. The LEED Platinum design works with Mexico City's temperate, dry climate to fill the terminal spaces with fresh air using displacement ventilation principles. For a large part of the year, comfortable temperatures will be maintained by almost 100 percent outside air, with little or no additional heating or cooling required.

Designed to be the world's most sustainable airport, the compact single terminal uses less materials and energy than a cluster of



At 555,000 sq m, Mexico City's new international airport is set to be one of the world's largest airports. It is also designed to be the world's most sustainable airport.

buildings. The design ensures short walking distances and few level changes, it is easy to navigate, and passengers will not have to use internal trains or underground tunnels. Flexible in operation, its design anticipates the predicted increase in passenger numbers to 2028 and beyond, and its development will be the catalyst for the regeneration of the surrounding area. ■

US construction machinery exports decline 17.3 percent

US construction machinery exports dropped 17.3 percent during the first half of 2014 compared with midyear 2013: US\$8.93 billion in exports were shipped to global markets compared to US\$10.8 billion for first-half 2013, according to the Association of Equipment Manufacturers (AEM), citing US Department of Commerce data.

Africa was the only world area in the plus column, with a 4.3 percent increase. Australia/Oceania recorded the steepest decline, at 38.6 percent, followed by South America with a 33.1-percent drop.

At midyear 2014, exports of construction machinery to Europe declined 25.4 percent compared to first-half 2013, for a total US\$1.02 billion, and exports to Canada dropped 4.6 percent to total US\$3.51 billion. Exports to Asia declined 13.9 percent to US\$1.04 billion for the first half of 2014.

Mid-year exports to Central America decreased 23.7 percent to US\$949.3 million, and exports to South America declined 33.1

percent to US\$1.28 billion.

Australia/Oceania's construction equipment export purchases decreased 38.6 percent for a total US\$460.7 million, while Africa took delivery of US\$682.1 million worth of construction equipment, a gain of 4.3 percent.

The top countries buying the most US-made construction machinery during the first half of 2014 were Canada (US\$3.51 billion), down 4.6 percent; Mexico (US\$770.4 million), down 24.6 percent; Australia (US\$424.7 million), down 40.6 percent; South Africa (US\$400.5 million), down 26.7 percent; Brazil (US\$358.3 million), down 30.1 percent; Chile (US\$299.8 million), down 37 percent; Peru (US\$279.4 million), down 15.1 percent; Belgium (US\$210.4 million), down 36.3 percent; Saudi Arabia (US\$206.2 million), down 43.1 percent; China (US\$189.8 million), down 21.8 percent; and Russia (US\$172.1 million), down 36 percent. ■

Fort Lauderdale-Hollywood International Airport opens new runway

Fort Lauderdale-Hollywood International Airport (FLL) in Florida, the US, opened its new runway in September. The Runway 10R-28L, part of FLL's airport expansion programme for which AECOM is programme manager, is a new, 8,000 ft long commercial air carrier runway that replaces the previous general aviation Runway 9R-27L. AECOM served as the comprehensive programme management team leader for the runway, providing services that included programming, validation, scheduling,

budgeting and cost control, design definition, design management and construction oversight.

The US\$1.3 billion airport expansion programme, which began in January 2009, is an extensive capital development plan aimed at improving FLL's runway and international arrivals terminal's capacity in order to enhance conditions in the crowded South Florida airspace. The full airport expansion programme is scheduled to be completed in 2018. ■

SUSTAINABLE SOLUTIONS!



Close to
our customers



POWER

The **WR 240/WR 240i** from Wirtgen performs convincingly when it comes to soil stabilization and cold recycling. In addition to perfect ergonomics and operation, clever automatic functions and outstanding off-road mobility, the efficient engine and powerful milling and mixing performance ensure optimum results. Take advantage of solutions from the technology leader.

www.wirtgen.com/recycling



product
design award

2013 GOLD



ROAD AND MINERAL TECHNOLOGIES

WIRTGEN SINGAPORE PTE LTD.
No.5, Tuas Avenue 18A · Singapore 638854
E-Mail: wirtgen@wirtgen.com.sg

Date	Events in Asia	Organiser & Contact
5 to 8 Nov 2014	Philconstruct 2014 SMX Convention Centre & World Trade Centre Manila The Philippines	Global-Link Exhibition Specialist Tel: +632 750 8588, Fax: +632 750 8585 Email: info@globalinkmp.com Website: www.globalinkmp.com
25 to 28 Nov 2014	bauma China 2014 Shanghai New International Expo Centre Shanghai China	Messe München International Tel: +49 89 949 20251, Fax: +49 89 949 20259 Email: info@bauma-china.com Website: www.bauma-china.com
4 to 6 Dec 2014	Myanbuild 2014 Myanmar Event Park Yangon Myanmar	AMB Events Sdn Bhd Tel: +603 4041 9889, Fax: +603 2770 5301 Email: suraya@ambexpo.com Website: www.myanbuild.net
15 to 18 Dec 2014	bC India 2014 India Expo Centre Greater Noida, Delhi India	Messe München International Tel: +49 89 949 20255, Fax: +49 89 949 20259 Website: www.bcindia.com
11 to 15 Mar 2015	Worldbex 2015 World Trade Centre Metro Manila Manila The Philippines	Worldbex Services International Tel: +632 656 9239 Email: info.worldbex@gmail.com Website: www.worldbex.com
27 to 29 Mar 2015	Constech 2015 Impact Exhibition & Convention Centre Bangkok Thailand	Impact Exhibition Management Co Ltd Tel: +66 2 833 5208, Fax: +66 2833 5127-9 Email: pasinc@impact.co.th Website: www.thailandconstech.com
23 to 26 Apr 2015	OneBuild@JB 2015 Danga City Mall, Johor Bahru Johor Malaysia	One International Exhibition Sdn Bhd Tel: +603 8943 7488, Fax: +603 8943 7599 Email: info@oneinternational.com.my Website: www.oneinternational.com.my
Date	Events outside Asia	Organiser & Contact
17 to 20 Nov 2014	PMV Live at The Big 5 2014 Dubai World Trade Centre Dubai UAE	DMG Events Tel: +9714 438 0355, Fax: +9714 438 0356 Email: pmvlive@dmgeventsme.com Website: www.pmvlive.com
11 to 14 Dec 2014	MS Africa & Middle East 2014 Cairo International Convention Centre Cairo Egypt	Veronafiere – Art Line – ExpoLink Tel: +39 045 8298800/8428, Fax: +39 045 8297800 Email: vfi@veronafiere.it Website: www.msafrika.net
3 to 6 Feb 2015	World of Concrete 2015 Las Vegas Convention Centre Las Vegas, Nevada USA	Hanley Wood Exhibitions Tel: +1 972 536 6300, Fax: +1 972 536 6301 Email: contactus@worldofconcrete.com Website: www.worldofconcrete.com
20 to 25 Apr 2015	Intermat 2015 Paris-Nord Villepinte Paris France	Intermat Construction Email: contact@intermatconstruction.com Website: www.intermatconstruction.com
21 to 24 Oct 2015	ConExpo Latin America 2015 Espacio Riesco Convention Centre Santiago Chile	Association of Equipment Manufacturers Tel: +1 414 298 4138 Email: sales@aem.org Website: www.conexpolatinamerica.com
11 to 17 Apr 2016	Bauma 2016 Munich Trade Fair Centre Munich Germany	Messe München GmbH Tel: +49 89 949 11348, Fax: +49 89 949 11349 Email: info@bauma.de Website: www.bauma.de

We Are Original



CONTRACTOR / MINING PUMPS

SINGAPORE

TSURUMI (SINGAPORE) PTE LTD
48 TOH GUAN ROAD EAST
#01-138 ENTERPRISE HUB
SINGAPORE 608586

TEL: 67608338 FAX: 67601268
EMAIL: sales@tsurumipump.com.sg

MALAYSIA

TSURUMI PUMP (M) SDN. BHD.
NO.11, JALAN PJU 3/49, SUNWAY DAMANSARA
TECHNOLOGY PARK, 47810 PETALING JAYA,
SELANGOR DARUL EHSAN, MALAYSIA

TEL: 60-3-7803-3373 FAX: 60-3-7806-3748
EMAIL: info@tsurumipump.com.my

INDONESIA

PT. TSURUMI POMPA INDONESIA
MEGA KEMAYORAN LANTAI UG BLOK A5 NO.1-2
JL. ANGKASA KAV. B-6, KOTA BARU BANDAR
KEMAYORAN JAKARTA PUSAT, INDONESIA

TEL: 62-21-2907-0426 FAX: 62-21-2937-1198
EMAIL: sales@tsurumipump.co.id



TSURUMI PUMP

www.tsurumipump.com.sg

+65 6760 8338

Singapore Crane Carnival takes industry to next level

The Crane Carnival 2014 once again brought together key influencers in the Singapore crane industry, with the aim of taking the industry to the next level. The event was held on 28 September at the ITE College Central, attracting approximately 1,500 visitors – this is a significant increase from last year, which drew around 800 visitors. “The turnout was incredibly positive, showing that people are becoming more aware of the tremendous opportunity available in the crane industry,” said Alan Chan, chairman of Singapore Cranes Association (SCA), one of the event’s organisers.

The Carnival was targetted at two groups of audience: the existing crane industry workforce and their family members, and potential employees and job seekers. The event’s objective was to highlight the workplace safety and health aspect of the industry, raise awareness on the developments in the crane industry and showcase the professionalism of the crane workforce.

There were many activities held during the Carnival including cranes display, indoor exhibition, lifting skills competition, recruitment fair and talk for potential crane operators and young job seekers, skills stations and practical skills workshops.

Several CEOs from the crane industry were also invited to ‘pull’ a crane as a symbolic gesture to bring to the industry to the next level. In addition, the CEOs signed a safety pledge signifying their commitment to raise Singapore’s crane safety standards.

“We require collaboration and commitment from all stakeholders to ensure that we work in a safe and healthy working environment. This needs to start from the top management as they exert the greatest influence on their organisations,” said Mohamed Abdul Akbar Bin Mohamed Abdul Kader, chairman of Workplace Safety and Health Council (National Crane Safety) Taskforce, who was guest-of-honour at the event.



Several CEOs from the crane industry ‘pulled’ a crane as a symbolic gesture to bring to the industry to the next level.



The CEOs also signed a safety pledge signifying their commitment to raise Singapore’s crane safety standards.



Left: Event-goers could try their hands at being a crane operator at the virtual crane simulator station.

Below: Cranes display.



‘Crane operators continue to be in demand’

Cranes are an integral part of construction activities and the strong construction demand in Singapore, forecast to be between S\$31 and S\$38 billion this year, is expected to increase the usage of cranes, explained Dr Ho Nyok Yong, president of Singapore Contractors Association.

As the usage of cranes is likely to increase, so is demand for crane operators. This role requires highly specialised skills and thus crane operators are reportedly able to earn up to S\$7,000 per month. Crane operators also have the opportunity to be posted to overseas projects since their certification is internationally recognised. The role is suitable for anyone - female or male - who is willing to be trained in precision lifting skills and has no fear of heights.

To boost the professionalism and safety of crane operators, Building and Construction Authority (BCA) has initiated the crane operators’ apprenticeship programme in 2013 with sponsored courses and cash incentives for upgrading. “The BCA certification is recognised internationally and our operators are much sought after in other countries. Some have been outstationed for projects as far away as Peru and Russia,” said Mr Chan.

The Singapore Crane Carnival is an annual event co-organised by the Singapore Cranes Association (SCA) and Singapore Contractors Association Ltd (SCAL), with the support of the Building and Construction Authority (BCA), Ministry of Manpower (MOM) and Workplace Safety and Health (WSH) Council. The first Crane Carnival took place in November 2013.

This year’s Crane Carnival kicked off the three-day inaugural Singapore Crane Fair. The Crane Safety Symposium was held on 29 September, and the International Cranes & Transport Asia Pacific Conference took place on 30 September. ■

Website: www.sgcranesassoc.org.sg/cranecarnival

BICES 2015 to be held in September at new venue

The next edition of BICES will take place from 22 to 25 September 2015 at the New Beijing International Exhibition Centre, Beijing, China - moving away from its old venue at the Beijing JiuHua International Exhibition Centre. The new venue is located at the Beijing airport industrial and business park, and consists of eight indoor halls covering a total of 106,000 sq m area plus two outdoor areas of 50,000 sq m each.

BICES 2015 is expected to attract approximately 1,000 exhibitors and occupy a 200,000 sq m area. Various seminars and conferences will also take place during the show. In addition, the third China International Commercial Vehicle Exhibition (IVEX 2015) and China International Emergency Rescue Equipment Exhibition will be held in conjunction with BICES 2015.

BICES is organised by China Construction Machinery Association (CCMA), China Construction Machinery Co Ltd (CNCMC) and China Council for the Promotion of International Trade - Machinery Sub-Council (CCPIT-MSC). ■

Website: www.e-bices.org



BICES prepares for its 2015 edition.

World of Asphalt 2015

The co-located World of Asphalt Show & Conference and AGG1 Aggregates Academy & Expo will return from 17 to 19 March 2015 at the Baltimore Convention Centre in Baltimore, Maryland, USA.

Education is a cornerstone of the AGG1 and World of Asphalt show experience, and programme planning is well underway with strong industry input. The People, Plants and Paving Training Programme and AGG1 Academy will both offer additional sessions; and the National Asphalt Pavement Association (NAPA) and National Stone, Sand and Gravel Association (NSSGA) are coordinating a joint track. Also adding sessions is the Beyond Compliance conference focussed on environment, health and safety at asphalt plants and paving sites.

Visitors can also take advantage of the returning Safety in the Work Zone seminar organised by the American Road and Transportation Builders Association (ARTBA).

Co-locating events at the shows to date are the Maryland Asphalt Association with its annual conference and the North East Asphalt User/Producer Group with executive board and steering committee meetings. ■

Website: www.worldofasphalt.com



New hoist!

Alimak Hek is introducing two new construction hoist models: ALIMAK SC 65/32 and SC 45/30.

Available in single or dual car configuration, both new hoist models offers payloads of 2,000 kg per car, and car sizes 1.5 x 3.2 m and 1.4 x 3.0 m. The hoists are available with either DOL (Direct-on-line) or FC (Frequency Control) drive via a highly efficient helical gearbox system.

With the quality and safety that have always been a hallmark of Alimak Hek products, and a competitive price tag, the new hoists will suit all known project demands for vertical access.

Visit us at Bauma China, Stand No. A.14



www.alimakhek.sg

IPAF opens China office

Strengthening its commitment to the Asian market, IPAF has established a new office in China. The Federation has also launched operator training materials in Chinese.

To mark both occasions, IPAF will hold a networking reception on 26 November 2014 during bauma China in Shanghai, in which the Federation is also participating. The networking reception is open to IPAF members and anyone who manufactures, rents, distributes, operates, uses or works with mobile elevating work platforms (MEWPs), also known as aerial work platforms (AWPs). Attendees will learn about IPAF's new office and planned activities in China, and get insights on how IPAF operator training can increase safety and productivity in their businesses.

This launch cum networking reception offers an opportunity to meet representatives working in the Chinese MEWP industry – equipment manufacturers, rental companies, contractors, end-users, health and safety authorities, and associations – right at the heart of one of the fastest growing MEWP markets. Representing IPAF are Bai Ri, IPAF's new representative for China; Raymond Wat, regional general manager, IPAF South East Asia; and Tim Whiteman, IPAF CEO.

IPAF will be exhibiting at stand no. E2.450 at bauma China, which will take place from 25 to 28 November. The Federation will promote its activities for the industry, raise awareness of how MEWPs



IPAF operator training being conducted in Tianjin, China.

provide a safe and effective way to perform temporary work at height, and offer solutions to keep the industry safe through operator training and technical and safety resources. ■

Half-year accident data released

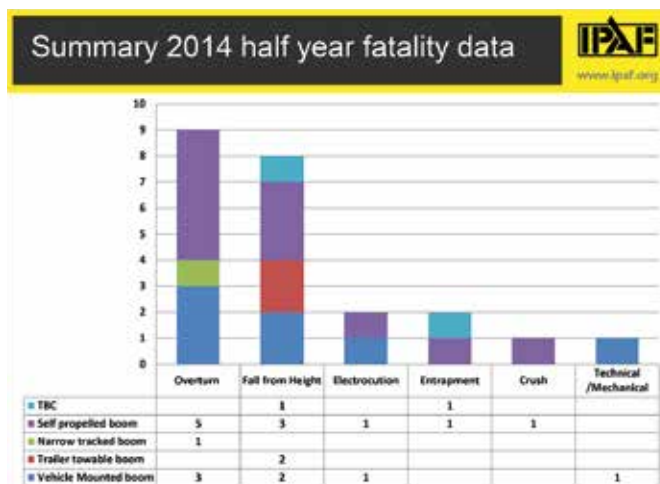
There were 23 fatalities worldwide involving MEWPs in the first half of 2014, according to findings from IPAF's accident database. The main causes of these fatalities were: overturn (9), fall from height (8), entrapment (3), electrocution (2), and technical/mechanical (1). One of the entrapment fatalities involved a person on the ground being crushed between the base of the MEWP and another structure. Eleven of the fatalities involved mobile booms (3b) and 10 involved static booms (1b). In two cases, the machine type is as yet unconfirmed.

Of these fatalities, 13 occurred in the US, two in Germany, and one each in Australia, Austria, Colombia, Malaysia, Singapore, South Africa, Spain and the UK.

"More companies are participating in the accident reporting project, which is generating more data in its third year, but it is too early to draw comparisons," said Chris Wraith, IPAF technical and safety executive. "This is a unique ground-breaking programme by the powered access industry to undertake ongoing analysis to learn lessons and improve safety worldwide. Preliminary findings from the accident reporting project have provided a rich source for improving IPAF's training programmes and safety initiatives, for example, with regards to the safe loading and unloading of machines, and managing electrocution risks when working near power lines."

IPAF's accident data is based on information collected in a number of ways: directly reported to the IPAF accident database at www.ipaf.org/accident, information obtained by IPAF staff worldwide, and information collated from press releases and news reports. The comprehensiveness of the data cannot be guaranteed, but where appropriate, action is taken to verify the facts. The data is updated should relevant information become available.

"Accidents do occur, but we should keep in perspective that with over one million rental units worldwide, MEWPs are one of the



The main causes of MEWP fatalities in the first half of 2014.

safest ways to do temporary work at height," said IPAF CEO Tim Whiteman. "And IPAF's accident reporting project is designed to make a safe industry even safer."

All manufacturers, rental companies, contractors and users are encouraged to report any known fatal and serious accidents involving mobile elevating work platforms (MEWPs) and mast climbing work platforms (MCWPs) worldwide at the IPAF accident database. The project is open to IPAF members and non-members, and includes an option for anonymous reporting. To register and to report an accident involving a MEWP or an MCWP, go to www.ipaf.org/accident. ■



GENIE'S TALLEST

SELF-PROPELLED BOOM LIFT

THE NEW GENIE® SX™-180

Productive, efficient and easy to transport boom

Reach New Heights:

- 57 m (186 ft) working height and 24.4 m (80 ft) horizontal reach with 3.05 m (10 ft) rotating jib

Precise Positioning:

- Standard 2.44 m (8 ft) self-leveling platform with 340 kg (750 lb) capacity
- 160° hydraulic platform rotation

Stable and Transportable:

- Newly designed XChassis system extends and retracts to provide stability on the job and narrow profile for transport
- Drive at full height for jobsite efficiency



To find out more about Genie products, visit our Website:

www.genielift.com

sx180.genielift.com

Terex Singapore Pte Ltd

+65-6692 7777

©2014 Terex Corporation. Genie and Taking You Higher are trademarks of Terex Corporation or its subsidiaries.

Genie
A TEREX BRAND

TAKING
YOU **HIGHER**™

Trio's new portable crushing and screening solution

Trio's new portable WIS4054-WH6202 plants are designed to be cost effective, boosting efficiency, maximising set-up flexibility and giving easier access to material resources. The innovative design of this high capacity closed circuit plant makes moving and set-up simple. All of the electrical controls are mounted onboard and require only a power supply cord to each plant. The overall dimensions and weight allows these plants to travel in most regions with minimal permits.

The 46 in x 16 ft TF4616 vibrating grizzly feeder provides ample target area for wheel loader feeding. Deep ridged side frames and a thick feeder pan are fabricated and stress relieved with honey comb style reinforcement, replaceable and sectionalised side and pan liners make maintenance simple. Grizzly bars have adjustable spacing with tapered openings in both dimensions to prevent clogging. The VFD control ensures an even consistent material flow.

The APS4054 horizontal impactor has a large unobstructed feed opening capable of handling the large slabs and irregular shapes found in recycling projects. The impact curtains and main frame are lined with thick, interchangeable, bolt on, AR liners. Trio



The new portable Trio WIS4054-WH6202 plants are designed to be cost effective, boosting efficiency, maximising set-up flexibility and giving easier access to material resources.

incorporates hydraulic assisted adjustment for the impact curtains and opening and closing the crusher. The massive rotor can be equipped with two, three or four rows of blow bars with a wide selection of metallurgies available to maximise parts wear life. The WI4054 plant is fitted with an armoured EF4806 pan feeder below the impactor eliminating excess conveyor belt wear.

The high 'G' triple shaft horizontal 6 ft x 20 ft TTH6202 double deck screen provides performance screening even with

difficult materials and is ideally matched to the high capacity APS4054 impactor. Trio's TTH-series screens feature side frames made from hot rolled steel, plasma cut with CNC punched holes. The company uses all bolted construction to eliminate stress fatigue in the screen body ensuring a long service life. The vibrating unit utilises spherical roller bearings running in oil bath lubrication, with adjustable stroke, speed and operating angle. ■

Enquiry: productinfo@trioproducts.com

New model for Pile Integrity Tester

A few years ago, Pile Dynamics released the PIT-X, a very compact Pile Integrity Tester that weighs only 500 grams and has a wireless configuration option (no cables connecting accelerometers or instrumented hammers to the main unit).

Pile Dynamics has now redesigned the traditional Pile Integrity Tester giving it a large and bright colour screen, a lighter enclosure and a USB port for data transfer. This model is available with one (PIT-V) or two (PIT-FV) channels of data acquisition, both traditional (wired). The PIT-FV is most often supplied with one accelerometer (provides velocity data through integration) and one instrumented hammer (force data, hence the name PIT-FV), but may also be used with two accelerometers (some special technical applications require two acceleration inputs).

The Pile Integrity Tester (PIT) has been the go-to instrument for low strain integrity testing of deep foundations. In its simplest configuration, PIT performs pulse echo tests and consists of a main unit, one accelerometer and one handheld hammer. The hammer is used to impact the top of the foundation, producing a wave that propagates down the shaft and reflects back up. The reflected waves are received by an accelerometer, which is attached (typically with wax) to the pile top. The main unit provides the testing professional with a velocity as a function of time log that may reveal a compromised foundation element. Some PIT models enable tests where two accelerometers are used, or where the



Pile Dynamics has redesigned the traditional Pile Integrity Tester giving it a large and bright colour screen, a lighter enclosure and a USB port for data transfer.

handheld hammer is instrumented with an accelerometer, for an alternate method of integrity analysis (transient response/frequency domain analysis). ■

Enquiry: info@pile.com



Husqvarna®

Free Gift Campaign

Send your personal info & contact to us at sales.asia@husqvarna.cn and you will receive a gift from us!



Husqvarna FR-3 Rescue Blade

Husqvarna FR-3 rescue blade is widely used all over the world, and it is suitable for rescue applications, rail cutting etc. A layer of vacuum brazed diamonds give the blade an outstanding cutting performance, and is suitable for cutting most materials likely to be encountered in an emergency situation (concrete, cast iron, masonry, stone, steel, brick, rubber, wood, metal, fiber board, PVC-pipe, rebar, iron, plexi-glass). It also has superior cutting speed and is safer than abrasive discs.

CONTACT LOCAL DEALER

- | | | | | | |
|----------------------|-----------------------------------|------------------|-------------------|----------------------------------|--------------------|
| • Hong Kong | OWP (Hong Kong) Co. | (852) 2877 3131 | • India | Prime Technologies | (91) 11 9811730146 |
| • Indonesia | PT. Bina Berkat Sentosa | (62) 21 56944199 | • Korea | Kyung Jin International Ltd | (82) 2 2238 2187 |
| • Singapore | AMB Supply and Services Pte Ltd | (65) 6444 4615 | • Taiwan | Husqvarna Far East Co. Ltd | (86) 592 6518 940 |
| • Thailand | Power Cut Co.,Ltd | (66) 2275-1212 | • Vietnam | Husqvarna Far East Co. Ltd | (86) 592 6518 940 |
| • Philippines | Cut & Break Diamond Products, Inc | (632) 664 5883 | • Malaysia | Defix Concrete Products Sdn Bhd. | (603) 91348600 |

HUSQVARNA CONSTRUCTION PRODUCTS

38, XIN JIA ROAD, COLLIMAN IND. PARK, HAICANG XIN YANG INDUSTRIAL DISTRICT, 361022 XIAMEN, FUJIAN PROVINCE, CHINA

sales.asia@husqvarnagroup.com

www.husqvarnacp.com

Copyright©2014 Husqvarna AB (publ). All rights reserved

New Pantera DPi 6.0 drill rig and Sandvik UH450E crusher

The new Pantera DPi 6.0 surface top hammer drill rig from Sandvik Construction has a redesigned control system with an updated user interface and touch screen. Featuring Sandvik's latest user interface style, support for new drill rig options and enhanced trouble shooting functions, the new control system provides easier and even more accurate operations. Furthermore, the new control system comes with improved hardware components that further add to the reliability and productivity.

To optimise its drilling performance, the Pantera DPi 6.0 is available with a high frequency RD1635F rock drill with Circulating Shank Lubrication System (CSL) that guarantees fast and efficient penetration. In CSL oil is circulated through filters and reused, rather than just collected. According to Sandvik Construction, the new CSL system reduces shank lubrication oil consumption by up to 70 percent compared to the old system, and increases significantly the lifetime of coupling sleeves.

Further improvements found on the Pantera DPi 6.0 include modifications to the exterior design, which enhances accessibility thereby enabling far easier maintenance. In addition, the drill rig comes with the latest high-tech options, such as the Driller's Notes. The latter is a completely new feature that allows the operator to add hole information, such as voids and cavities, to hole quality reports during drilling.

As with the earlier versions, Pantera DPi 6.0 surface top hammer drill rigs are intelligent, self-propelled, self-contained, crawler based surface drill rigs designed to be used in quarrying, production drilling as well as wall control and development works.

The Pantera DPi 6.0 drill rig family consists of two models, namely Pantera DP1100i for hole sizes of 89 – 140 mm and Pantera DP1500i for hole sizes of 102 – 152 mm. Both are available with low fuel-consumption and low-emission Tier 3 and Tier 4 Final engines.

In addition, the new Sandvik UH450E track-mounted crusher combines the reliability of the Sandvik cone crusher with a recirculating conveyor and aggressive screening system. It is ideal for aggregates contractors looking to achieve high quality end products, at maximum production capacity, combined with low operating costs.

The Sandvik UH450E has the ability to operate via electrical mains or an onboard diesel generator, offering a cost-effective and environment-friendly mobile solution.



Left: The DP1500i is one of the two models in the new Pantera DPi 6.0 drill rig family. It is designed for hole sizes of 102 – 152 mm.

Below: The new Sandvik UH450E track-mounted crusher combines the reliability of the Sandvik cone crusher with a recirculating conveyor and aggressive screening system.



The machine is versatile and can work either as a secondary or tertiary unit. Both the cone and screen come with a choice of crushing chambers and screening media respectively, and with a wide range of options available, it is adaptable to suit many different applications worldwide.

The UH450E has been designed with a pre-screen to optimise production and product quality, with the pre-screen also offering the operator flexibility in directing the flow of material. A pre-determined portion of the flow can be extracted on a side conveyor, be fed to the crusher or by-pass the crusher. The coarse material is fed directly into the Sandvik CH440 cone. It is then fed into the newly developed Sandvik product screen via the recirculating conveyor. This unique design operates via a tension-friction belt and enables excellent feed to the screen.

The aggressive double-deck banana-styled screen features a steeper angle at the feed end to accelerate the removal of fines and gentler lower section increases screening accuracy.

The complete process is fully automated, well-balanced and with a high level of 'intelligence' on board to maximise production, quality of material and minimise downtime. This includes a level sensor over the crusher chamber to keep the crusher choke fed, and Sandvik's ASRi - Automatic Setting Regulation - as standard. This is integrated with the intelligent on-board canbus system, ensuring the process is continuously monitored and adjusted, providing optimal and automatically controlled operation. The status of operations is continuously updated and communicated to the operator. ■

Enquiry: satu.ramo@sandvik.com






A choice that speeds up the future

Kobelco cranes offer a new dimension in work efficiency.

Photo: 7250S in Singapore
Foundation works to make a bridge pier in pedestrian walkway.

CKE1350G in UK
Using a green engine crane to build a renewable power plant.

Crawler Crane Series

	<p>Multi-purpose lattice boom crawler cranes</p> <p>lifting capacity</p> <p>CKE-G series (European model) 60~250t</p> <p>CK-G series (American model) 85~275uston</p> <p>CKS series (Standard model) 60~250t</p> <p>7000S series (Standard model) 120~250t</p>		<p>Large-sized crawler cranes</p> <p>lifting capacity</p> <p>SL-G series (European and American model) ... 300~550t</p> <p>SL-S series (Standard model) 300~550t</p>
	<p>Duty cycle lattice boom crawler cranes</p> <p>lifting capacity</p> <p>BME-G series (European model) 80t</p> <p>BMS series (Standard model) 80~100t</p> <p>BMS1200HD (Standard model) 120t</p>		<p>Telescopic boom crawler cranes</p> <p>lifting capacity</p> <p>TK series 55~75t</p>

KOBELCO CRANES CO., LTD. (JAPAN)
Tel: +81-3-5789-2130 <http://www.kobelco-cranes.com>

KOBELCO CRANES NORTH AMERICA INC. (U.S.A.)
Tel: +1-713-856-5755 <http://www.kobelcocranesnorthamerica.com>

KOBELCO CRANES EUROPE LTD. (U.K.)
Tel: +44-1342-301122 <http://www.kobelco-cranes.com/europe/>

KOBELCO CRANES EUROPE LTD. (The Netherlands branch office)
Tel: +31-36-549-5510 <http://www.kobelco-cranes.com/europe/>

KOBELCO CRANES MIDDLE EAST FZE. (U.A.E.)
Tel: +971-6-557-8114 <http://www.kobelco-cranes.com/middle-east/>

KOBELCO CRANES SOUTH EAST ASIA PTE. LTD. (SINGAPORE)
Tel: +65-6268-1308 <http://www.kobelco-cranes.com/southeast-asia/>

KOBELCO CRANES (SHANGHAI) CO., LTD. (CHINA)
Tel: +86-21-5382-0120 <http://www.kobelco-cranes.com/shanghai/>

KOBELCO CRANES INDIA PVT. LTD. (INDIA)
Tel: +91-11-40151900 <http://www.kobelco-cranes.com/india/>

CHENGDU KOBELCO CRANES CO., LTD. (CHINA)
Tel: +86-28-6508-5564 <http://www.kobelco-cranes.com/chengdu/>

KOBELCO CRANES TRADING CO., LTD. Eastern Used Equipment Center Tel: +81-45-834-9994 Western Used Equipment Center Tel: +81-78-303-1220 <http://www.kobelco-cranes.com/used/en/>

KOBELCO CRANES CO., LTD.
<http://www.kobelco-cranes.com>

Tsurumi LSC and LSP residue dewatering pumps

The Tsurumi LSC1.4S and LSP1.4S residue dewatering pumps are single phase pumps that can drain water down to a minimum level of 1 mm at construction sites to prevent breeding of mosquitoes. They are portable and lightweight, which can be carried around easily and require self-priming before operation.

Both models have a top discharge, flow through design that provides maximum motor cooling efficiency, allowing continuous operation at low water levels and extended dry-run capability.

The LSC1.4S features a specially designed bottom plate that enables the pump to drain down to 1 mm water level. It has a swing check valve to prevent reverse flow of the sucked water when the pump stops its operation. Although the pump is a single phase unit, it has the durability equivalent to three phase drainage pumps, since the wear parts are made of abrasion resistant materials, explained Tsurumi. The discharge direction is selectable between vertical and inclined, which prevents folding or bending of the discharge hose.

The LSP1.4S uses a suction attachment, supplied as standard to drain water down to floor level. The suction attachment can be placed freely without the need to move the pump. This unit is equipped with a siphon breaker mechanism that prevents reverse flow when the pump stops its operation. As it incorporates a submersible pump, there will be no problem even if it is submerged in water, said Tsurumi. ■

Enquiry: sales@tsurumipump.com.sg



Above: The Tsurumi LSP1.4S pump in operation.



Left: The LSP1.4S features a motor output of 0.48 kW, maximum capacity of 0.06 cu m/min, maximum head of 8 m and a suction x discharge bore of 25 mm by 25 mm.



Left: The LSC1.4S pump in operation.

Above: The LSC1.4S has a motor output of 0.48 kW, maximum head of 11 m, maximum capacity of 0.17 cu m/min and a discharge bore of 25 mm.