

Security Solutions Today

May / June 2016

SCHOOL & CAMPUSES SECURITY

Cover Focus Campus Security Upgrade - Valdosta State University

Inside Look Zombie Byte Symptoms, Reanimation & Cure & More!

Security Feature by Barracuda, Sensurity & Siemens

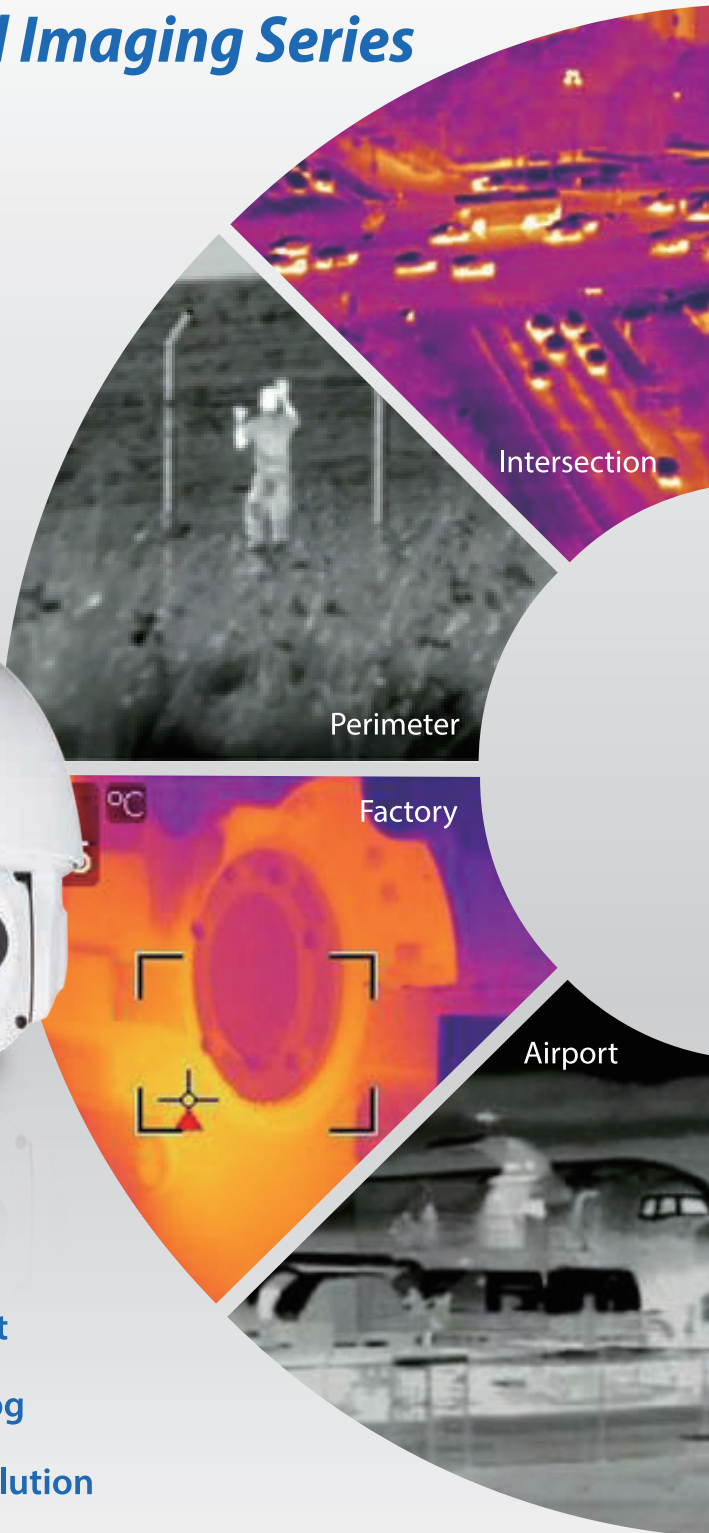
Radio Communication Technology Featuring Unique Secure



Scan this code to visit our website

Detection in Total Darkness

— Thermal Imaging Series



• Intelligent Video Analysis



• Temperature Measurement Support



• Tri-mode Output: IP / HDCVI / Analog



• Complete Thermal Monitoring & Solution







GUARANTEED PERFORMANCE

TODAY - AND TOMORROW

When *network dependability is critical*, the *transmission products you choose today* affect how *your network performs tomorrow*.

ComNet - Communication Solutions for the Long Term

- Only ComNet Offers a Complete Fiber Optic, Copper, and Wireless Communication Solution
- ComNet Products are MADE IN THE USA 
- Exclusive **LIFETIME WARRANTY** 
- Experienced ComNet Customer Care Specialists Who Understand Your Application are Here to Support Your Every Need

www.comnet.net

comnet
Communication Networks
sales-europe@comnet.net
+44 (0)113 307 6400

See what ComNet can do for you.

Security Australia | Stand G43 | 20 - 22 July

IFSEC SE Asia | Stand K515 | 7 - 9 September



CONTENTS

May-June 2016



CALENDAR OF EVENTS	6
EDITOR'S NOTE	8

IN THE NEWS

Around The World	10
Eye On Asia	20

COVER FOCUS

Campus Security Upgrade – Valdosta State University	26
---	----

REGIONAL REPORT

Breakdown and forecast of Thailand in the security sector	30
---	----

CASE STUDIES

Schools and Campuses	32
General	48

SECURITY FEATURE

Reducing False Alarms In Perimeter Intrusion Detection Systems	60
Facing The Corporate Security Challenge	64
Ensuring Network and Data Safety with Barracuda Networks	68

RADIO COMMUNICATION TECHNOLOGY

Introduction to Radio Communication Technology	72
Automatic Intelligent Alarm Dispatch for Safety, Security and Critical Alarm Notification	73
Unique Secure Feature	76

INSIDE LOOK

Transactions Through Mobile Devices	80
Zombie Byte	82

PRODUCT SPOTLIGHT	86
--------------------------	----

PRODUCT SHOWCASE	92
-------------------------	----

Security.

At the Center of Your Business.

Genetec Security Center is the leading enterprise-class security platform deployed by some of the world's most demanding organizations, governments and cities.

From video surveillance and license plate recognition to access control and intrusion detection, Security Center unifies the security systems that are critical to your operations, so you can see the big picture and make better security decisions – both today, and tomorrow.

Start Here. At Your Security Center.

Learn more at
genetec.com/mysecuritycenter



Video Surveillance | Access Control | Automatic License Plate Recognition

©2015 Genetec. All rights reserved. Genetec, and the Genetec logo are either registered trademarks or trademarks of Genetec. All other trademarks contained herein are the property of their respective owners.

genetec.com

Genetec
Innovative Solutions

Publisher

Steven Ooi (steven.ooi@tradelinkmedia.com.sg)

Editor

Brendan Seow (sst@tradelinkmedia.com.sg)

**Radio Communication Consultant
Martin Gillmon**

Group Marketing Manager

Eric Ooi (eric.ooi@tradelinkmedia.com.sg)

Marketing Manager

Felix Ooi (felix.ooi@tradelinkmedia.com.sg)

Marketing Executive

Belle Choong (belle.choong@tradelinkmedia.com.sg)

**Head Of Graphic Dept/
Advertisement Co-ordinator**
Fawzeeah Yamin (fawzeeah@tradelinkmedia.com.sg)

Graphic Designer

Siti Nur Aishah (siti@tradelinkmedia.com.sg)

Circulation

Yvonne Ooi (yvonne.ooi@tradelinkmedia.com.sg)



Photo Credit: StockSnap / pixabay.com
Designed by Fawzeeah Yamin

Printed in Singapore by KHL Printing Co Pte Ltd.

Security Solutions Today

is published bi-monthly by
Trade Link Media Pte Ltd
(RCB Registration No: 199204277K)
101 Lorong 23, Geylang,
#06-04, Prosper House, Singapore 388399.
Tel: 65-68422580 Fax: 65-68422581
ISSN 2345-7104 (Print)

The magazine is available free-of-charge to applicants in the security industry who meet the publication's terms of control. For applicants who do not qualify for free subscription, copies will be made available, subject to the acceptance by the publisher, of a subscription fee which varies according to the country of residence of the potential subscriber in the manner shown on the right.

The editor reserves the right to omit, amend or alter any press release submitted for publication. The publisher and the editor are unable to accept any liability for errors or omissions that may occur, although every effort had been taken to ensure that the contents are correct at the time of going to press.

The editorial contents contributed by consultant editor, editor, interviewee and other contributors for this publication, do not, in any way, represent the views of or endorsed by the Publisher or the Management of Trade Link Media Pte Ltd. Thus, the Publisher or Management of Trade Link Media will not be accountable for any legal implications to any party or organisation.

Views and opinions expressed or implied in this magazine are contributors' and do not necessarily reflect those of Security Solutions Today and its staff. No portion of this publication may be reproduced in whole or in part without the written permission of the publisher.

ANNUAL SUBSCRIPTION:

Surface Mail:

Singapore - S\$45 (Reg No: M2-0108708-2
Incl. 7% GST)

Airmail:

Malaysia/Brunei - S\$90
Asia - S\$140
Japan, Australia,
New Zealand - S\$170
America/Europe - S\$170
Middle East - S\$170

ADVERTISING SALES OFFICES

Head Office: Trade Link Media Pte Ltd.
(RCB Reg. No: 199204277K)
101 Lorong 23, Geylang, #06-04, Prosper House, Singapore 388399.
Tel: +65 6842 2580; Fax: +65 6842 1523, 6846 8843, 6842 2581.
Email (Mktg): info@tradelinkmedia.com.sg

India:

Mr. Avneet Singh
Mark Excellence Business
Management
C317 / 8 Inlaks Nagar, C.H.S.
15 Yari Road
Versova, Andheri (West)
Mumbai
India
Tel: +91-22 325 81 747
Fax: +91-22 263 96 204
avneet@markexcellence.com

Japan:

T Asoshina/Shizuka Kondo
Echo Japan Corporation
Grande Maison, Rm 303,
2-2, Kudan-Kita, 1-chome,
Chiyoda-ku, Tokyo 102,
Japan
Tel: +81-3-32635065
Fax: +81-3-32342064

Italy/Switzerland:

Arch. Aldo Cacchioli
Publistein di
Galli-Cacchioli & Co.,
Via Borghese 11
CH-6600 Locarno
Switzerland
Tel: +41-91-7516910
Fax: +41-91-7517109
info@publistein.com

Korea:

MCI
Room B615,
Hanwha Obelisk 2,
481, World Cup buk-ro,
Mapo-gu, Seoul,
Korea 03902
Tel: +82 2 730 1234
Fax: +82 2 732 8899

Merchandise Availability Solutions

SOURCE TO SHOPPER SOLUTIONS

MANUFACTURING/DISTRIBUTION

STOCK ROOM

RETAIL STORE



APPAREL

SUPERMARKET

PHARMACY

BEAUTY

DISCOUNTER

...

- Increase Your Sales
- Maximize On-Shelf Availability

- Reduce On-Hand Inventory
- Reduce Out-of-Stocks

Contact Checkpoint to learn more about RFID-based solutions.



Email: Apac.Marketing@checkpt.com

Find out more at:

CheckpointSystems.com

Checkpoint



CALENDER OF EVENTS



Asian Securitex 2016

Date: 4th to 6th May 2016
 Venue: Hong Kong Convention & Exhibition Centre
 Organiser: Hong Kong Exhibition Services Ltd
 Contact: Karina Yu
 Tel: +852 2804 1500
 Email: exhibit@hkesallworld.com
 Website: www.hkesallworld.com

CommunicAsia 2016

Date: 31st May to 3rd June 2016
 Venue: Marina Bay Sands
 Organiser: Singapore Exhibition Services
 Contact: Pinpin Tan
 Tel: +65 6233 6638 Fax: +65 6233 6633
 Email: pinpin.tan@sesallworld.com
 Website: www.CommunicAsia.com

InfoComm 2016

Date: 8th to 10th June 2016
 Venue: Las Vegas Convention Center
 Tel: +1 703 273 7200
 Toll Free: +1 800 659.SHOW
 Fax: +1 703 273 5924
 Website: www.infocommshow.org

IFSEC International 2016

Date: 21st to 23rd June 2016
 Venue: ExCel London One Western Gateway, Royal Victoria Dock
 Organiser: UBM EMEA
 Contact: Gerry Dunphy
 Tel: +44 (0) 207 921 8063
 Email: gerry.dunphy@ubm.com
 Website: www.excel-london.co.uk

IFSEC Southeast Asia 2016

Date: 7th to 9th Sep 2016
 Venue: Kuala Lumpur Convention Center (KLCC)
 Organiser: UBM
 Contact: Rina Fadzil
 Tel: +6-03-2176 8788 Fax: +6-03-2164 8786
 Email: Rina.Fadzil@ubm.com
 Website: www.ifsecsea.com

Secutech Vietnam 2016

Date: 18th to 20th August 2016
 Venue: Saigon Exhibition & Convention Centre (SECC)
 Organiser: Messe Frankfurt New Era Business Media Ltd
 Contact: Eva Tsai & Echo Lin
 Tel: (886) 2 2659 9080
 Email: stvn@newera.messefrankfurt.com
 Website: www.secutechvietnam.com

Safety & Security Asia 2016

Date: 28th to 30th Sep 2016
 Venue: Halls B & C, Marina Bay Sands
 Organiser: Conference & Exhibition Management Services Pte Ltd
 Tel: +65 6278 8666 Fax: +65 6278 4077
 Email: info@cems.com.sg
 Website: www.safetysecurityasia.com.sg

Security China 2016

Date: 25th to 28th Oct 2016
 Venue: 2016 China International Exhibition Center (New Center)
 Organiser: China Security and Protection Industry Association
 Tel: 8610-68731710 Fax: 8610-68730788
 Email: secu_chinashow@yahoo.com.cn
 Website: www.securitychina.com.cn

Intersec 2017

Date: 22nd to 24th Jan 2017
 Venue: Dubai International Convention and Exhibition Centre
 Organiser: Messe Frankfurt Middle East GmbH
 Tel: +971 4 389 4500 Fax: +971 4 358 55 33
 Email: intersec@uae.messefrankfurt.com
 Website: www.intersecexpo.com

The Trusted Brand in Security Solutions

Plato DesFire Reader



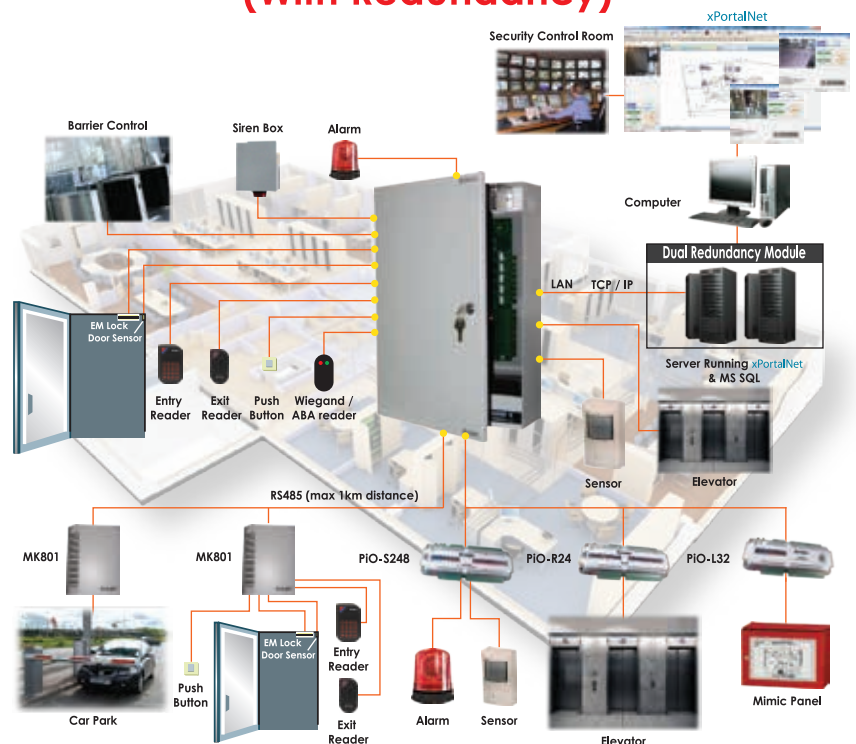
- ▶ 64 Bit Programmable Card ID
- ▶ Encrypted with 3DES
- ▶ Card ID Not by Serial Number

P1000i PoE Controller



- ▶ PoE with Battery Charger
- ▶ AES128 Encrypted IP
- ▶ Support 1 Door/2 Readers

Integrated Security System (With Redundancy)



Projects



Commercial /
Complex



Factory



Condominium



Plato Reader - Slim Card Reader



600+ readers ward access & security system on SQL Server for hospital and many more ...



Our Office





Editor's Note

Hello dearest readers of Security Solutions Today!

First off, my name is Brendan Seow the current editor on-board for SST, this is the first issue of a magazine I've ever published and would like to humbly thank all the contributors for their support this past month!

In this issue we will be covering campus security and it's various different angles, for our 'Cover Focus' we will be covering Valdosta State University's success story as they upgrade their on campus security systems to enhance their on campus security.

The 'Regional Report' segment will cover Thailand's security industry with CEO of Maxwell Integration CO, LTD. Mr Ratch Talabhat providing both insights and foresights to the current and future market for security in Thailand.

In our 'Security Feature' segment, Sensurity's Technical Director, Mr George Redpath, shares the various ways of Reducing False Alarms for Perimeter Intrusion Detection Systems. Siemens' Head of Corporate Security Portfolio, Mr Michael Bouche then shares with us, how he tackles the corporate security challenge. And lastly, Barracuda shares with us how their success with persistent malicious attacks on Universiti Malaysia Perlis.

We also have a new Radio Communication technology segment, with a short introduction to our Radio Communication consultant, Mr Martin Gillmon and the segment as a whole.

It has been a great experience doing up this issue and I truly hope everyone finds this issue to be insightful and enjoyable to read!

Cheers,

Brendan Seow



SINGAPORE SPORTS HUB*
Delta DSC2000 Barricades



UK EMBASSY, BUDAPEST
Delta DSC1100 Barricade



BERTH LIMA-SAN DIEGO
Delta TT280 Linear Crash Gate



NAVY YOKASUKA, JAPAN
TT207S Barriers



PORT, JAPAN
DSC501 Barricade



**U.S. FEDERAL COURTHOUSE-
LOS ANGELES**
Delta Fixed Bollards



SINGAPORE PARLIAMENT
Delta DSC720 Bollards



U.S. DEPARTMENT OF STATE
Delta TT210 Bollards



**SOCIAL SECURITY
BUILDING, DC**
Delta IP500 Portable Barrier



LOS ANGELES INTL. AIRPORT
Delta SC3000 Sliding Gate



U.S. EMBASSY, YEMEN
Delta DSC501 Barricade



UNIVERSAL STUDIOS
Delta Booth



**G20 SUMMIT-
PITTSBURGH, PA**
Delta MP5000 Mobile System



BUCKINGHAM PALACE
Delta DSC720 Bollards

40 Years Protecting the World's Most Important Facilities

*17,000 Systems Deployed
Around the World!*

From stopping a bomb-laden car and SUV from penetrating the entrances to the U.S. consulate in Herat, Afghanistan in September of 2013 to protecting dams, border crossings, courthouses, embassies, presidential libraries and many other important facilities, Delta's bollards, barricades, beams, barriers, gates and guard booths have helped keep people and property safe in over 130 countries throughout the world since 1974.



Go to www.deltascientific.com for full details & specifications.
40355 Delta Lane, Palmdale, CA 93551 ▲ 1-661-575-1100 ▲ info@deltascientific.com

*Photo courtesy of VSL Infrastructure Protection, Installer



Pelco by Schneider Electric™ Announces Integration of VideoXpert with iView™ Systems

Pelco by Schneider Electric announced that its VideoXpert video management system is now integrated with iTrak, the latest incident management solution from iView Systems.

“The iTrak plugin continues our effort to work with other leaders in the industry to provide Pelco customers seamless access to the ready-made solutions to better understand and protect their organizations” said Jonathan Lewit, Director of Business Application at Pelco by Schneider Electric.

Ideal for multi-site, multi-departmental solutions, iTrak provides users with a centralized platform for incident and risk management. Its intuitive design makes it easy to access comprehensive reporting, profiling, interview management, risk analysis and subject profiling information. With the integration to VideoXpert, users will not only be able to see

all related incident data via a single report, they can now link these incidents with supporting video.

The Incident File feature captures critical incident data including location, sub-location, date and time as well as a short description of the incident. The added ability to include supporting attachments in the form of a Narrative or Media file to the Incident, allow for quick information retrieval. Narrative files provide flexibility to include free-form text, critical in instances when collecting witness accounts or documenting incident notes, while the media attachments enable the user to include pictures or PDF files for more thorough event investigations.

“Ease-of-use and integration of video with critical business data are cornerstones of the VideoXpert platform. The integration with iView is a prime example of our commitment to providing users with extensible functionality through

partner integration.” added Lewit.

“The seamless integration of iView Systems iTrak® with the Pelco VideoXpert Ops center provides an instant and efficient method of converging Incident related information with its associated Video data”, stated Martin Drew, President / CEO, iView Systems. “Users will also be able to leverage the tagging capability to identify video from cameras associated with iTrak’s incident location classifications. The overall integration will provide significant improvements in overall operational efficiency and accuracy of reporting.” says Drew.

Pelco customers can access additional iView integration details on the Partner First website. Pelco’s Partner First program marks a new level of openness and commitment to identify and bring to market additional features, capabilities and solutions through development of strategic partnerships. **SST**

BT And Intel Security Collaborate To Develop Next Generation Security Services

BT and Intel Security announced a strategic agreement to create new solutions to help organisations improve security and prevent cyber-attacks. The companies will also work together in a joint cyber partnership to further develop their common vision of creating next generation security services.

These new solutions will bring together key elements of both companies’ technology platforms and address current shortcomings of traditional point security products by avoiding the operational silos that widen the gap between detection and response. They are designed to simplify management and support, close many of the expertise gaps in the market and improve speed of response.

In the face of an ever-evolving cyber threat landscape, organisations need continuous innovation to help them protect their critical data and applications wherever they choose to host them; on their premises, in the cloud or a hybrid of both.



continue on page 12

LESS is



Less Degradation

digital transmission preserves HD video quality

Less Storage Space

advanced H.265 compression saves storage space

Less Trouble

simple setup allows "plug and display"

When **CCHDTV** meets **H.265**

3~8 megapixel digital surveillance systems available since March, 2016

Worldwide customers have selected DTV solution to secure their property. Visit <http://www.cchdtv.org/tw/solution/> for more successful cases.



Campus



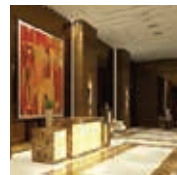
Factory



Commercial Buildings



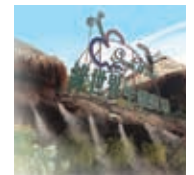
Shopping Malls



Residential Areas



Public Facilities



Theme Parks

Features of DTV Products

- One x Multiple: multiple UHD video over one coax, simultaneously.
- OFDM: advanced COFDM technology to deliver digital video.
- Long distance: no amplification required over 1km.
- Flexible installation: upgrade without cable change. Flexible topologies.
- Easy integration: easy integration to network (IP) and power (POC) system.

Asia Suppliers (Global Makers Please Visit <http://cchdtv.org/en/adopter/>)

Sole-Vision Technologies Pte Ltd
 18 Howard Road #07-11 & 01,
 Novelty BizCentre, Singapore 369585
 TEL: +65 6702 3530
 FAX: +65 6702 3532
 Email: sales.sg@solevision.com.sg
 Web: www.sole-vision.com.sg

SUNNIC TECHNOLOGY & MERCHANDISE (S) PTE. LTD.
 Blk 28 Kallang Place #04-17 Singapore 339158
 TEL: +65 6291 2858 EXT 3350
 FAX: +65 6291 2956
 HP: +65 9070 5543
 Contact: ETHAN CHANG
 Email: ethan_chang@sunnict.com.sg



ITE Tech, Inc. Taipei Branch
 7F, No. 233-1, Baociao Rd., Xindian Dist.
 New Taipei City, 23145, Taiwan
 T/+886-2-29126889 x2654
 F/+886-2-29102551
 itesupport@ite.com.tw
<http://www.ite.com.tw>



BT and Intel Security are focused on integrated, open security systems with cloud-first technology designed to empower organizations to resolve threats faster and with fewer resources.

Together, BT and Intel Security will work to address these threats with a single ecosystem that can handle multiple security controls. This means that the controls within both companies' platforms will talk and interact with each other. This may provide considerable cost benefits for customers as the same controls can be delivered often with less hardware, less configuration and less management overhead.

Mark Hughes, CEO of BT Security, said: "At BT, we are determined to stay ahead of the security game. We are collaborating with Intel to bring together BT's security intelligence with Intel's advanced security tools in real time. We believe that our combined proposition will be an industry first in terms of the scope and ambition. Intel's cutting edge security technology and our knowhow in service design and delivery can help make our customers safer."

Raj Samani, EMEA chief technology officer, Intel Security, said: "Our goal is to enable businesses around the globe to more aggressively and effectively defend against data security incidents and targeted attacks. Together with BT, we plan to close the gaps between detection and remediation by creating and managing a security ecosystem designed to enable real-time communication, intelligence exchange and response across security tools." **SST**

Pelco and PlateSmart Partner to Deliver License Plate Recognition

Integration provides intelligent analytics functionality, data accuracy for end users

Pelco by Schneider Electric announced that its VideoXpert™ video management platform is now integrated with PlateSmart's ARES license plate recognition (LPR) system. The integration provides joint customers with an advanced, accurate and efficient suite of intelligent video analytics tools that compliment the rich video management functions delivered by Pelco VideoXpert.

Integration with third-party technologies, such as PlateSmart, is part of the Pelco's commitment to developing customized solutions for end customers. As users capture growing amounts of video data, it is critical to deploy intelligent tools that enable video surveillance data to be immediately digestible to ensure safety and security, and optimizing business efficiency.

The combination of Pelco's scalable and customizable VideoXpert VMS and the automated number plate recognition (ANPR) of PlateSmart's ARES solution delivers end users with the ability to recognize key data points for identification and investigations accuracy.

"To be the best, you have to work with the best, and Pelco is absolutely at the top of its game in the video surveillance marketplace," said John Chigos, CEO, PlateSmart. "With all of the changes currently underway in the VMS market, we knew the time was right to closely partner with Pelco. ARES delivers a robust LPR-based video analytics to

VideoXpert users, along with data integrity protection that enables users to ensure the availability of captured data." More specifically, the Pelco and PlateSmart interface correlates data from license plate information and video surveillance systems and displays critical information and live video through a single, easy-to-deploy user interface. The integration enables three plug-in capabilities, including:

LPR Overlay, which facilitates accurate and real-time monitoring of license plates by overlaying a camera-view window with a dynamic list of license plates captured by the system. This allows users to quickly and easily view critical license plate information – such as number and state.

Plate Viewer displays essential metadata, such as time capture with timestamp details, the name of the camera, where the license plate was read, and source and images of the license plate.

Alert Viewer, which enables expanded alert details and metadata, including identification of the standard operating procedure (SOP) that triggered the alert as well as the alert type, code, category and priority previously defined by the alert SOP.

For more information, please visit:
partnerfirst.pelco.com **SST**



New high-speed PTZ cameras DDZ4220HD and DDZ4230HD

With the DDZ4220HD and DDZ4230HD Dallmeier launches new PTZ cameras with a resolution of up to two megapixels.

The cameras of the series DDZ42xxHD are high-speed HD PTZ dome network cameras. They are equipped with a high-performance Pan-Tilt-Zoom mechanism and provide real-time high-definition video with up to 30fps at a resolution of 2MP. The most advanced sensor and encoder technology and the sophisticated image processing provide recordings with excellent contrast, brilliant clarity as well as highest detail resolution and colour fidelity.

The DDZ4220HD features 20x optical zoom and the DDZ4230HD 30x optical zoom with auto-focus. The high zoom factor allows for the easy and discreet surveillance even of faraway objects. Functions like "Digital WDR (Wide Dynamic Range)" and "3D DNR (3D digital noise reduction)" guarantee good image quality. The very good light sensitivity of the sensor and the sophisticated image processing ensure crisp colour images even in low lighting.

In night mode, the cameras also provide outstanding results due to the very good infrared sensitivity. The PTZ cameras are equipped with a removable IR cut filter, and can automatically switch between day and night mode. In addition, different day and night presets for the exposure settings can be defined and adjusted.

Up to 128 preset positions and 32 tours can be programmed. Particularly useful in that regard are the

adjustable alarm actions with contact closure: If a certain contact is closed i.e. triggered, for example by opening an entrance door, the camera automatically moves to the programmed preset position of the relevant scene.

The DDZ4220HD and DDZ4230HD are equipped with a RAM memory that is used by the EdgeStorage function for storing the video stream in case of a network failure. When the network is restored, the SmartBackfill function ensures a fast transmission to the SMAVIA recording system. This stores the video stream with high speed and then continues the recording of the live stream seamlessly.

The PTZ dome cameras are available in an in-ceiling, surface or weatherproof housing. The in-ceiling variant of the camera is tested according to the stringent requirements of the UL 2043 relating to flame retardancy and low smoke emission. Thus, it is approved for installation in air-conducting space, for example in air shafts or false ceilings dissipating the air to a central air conditioning.

The PTZ cameras can be conventionally supplied with 24 V AC or conveniently with Power over Ethernet (PoE+).

Good to know:

In addition to the DDZ42xxHD series there is also a new PTZ camera series DDZ41xxHD available with up to 1.3 megapixels.

For more information please visit:

www.dallmeier.com or www.panomera.com **EST**

Genetec Inc. Introduces Genetec™ Lifecycle Management: Expanded Software, Support and Services Framework

Updated Support Offering Provides General Assistance to All Customers with Available Premium Paid-for Service

Genetec™, a leading provider of open-platform, unified IP security solutions announced Genetec™ Lifecycle Management (GLM), a new software, support and services offering. Lifecycle Management is available in two options: Genetec™ Assurance, which is free of charge for all new and existing customers, and Genetec™ Advantage, an optional premium paid-for option.

Genetec™ Advantage includes premium collaborative support with advanced troubleshooting, dedicated support resources that includes up to 40 hours of consulting per year, access to all software releases, and proactive system health

continue on page 14



tools that help streamline maintenance, saving customers time and money. With Genetec™ Advantage, customers also have access to complimentary cloud services such as the addition of up to 100 Stratocast™ camera connections, and up to 100 terabytes of Cloud Archives storage to expand their system into the cloud, risk-free.

“Our new support framework ensures that when customers invest in Genetec™ Security Center, they can count on a dedicated team of technical engineers to deliver quality support when they need it most. With Genetec™ Lifecycle Management, our customers will gain access to tools and resources to fully capitalize on their security investments. With Genetec™ Advantage, they will be able to unlock even greater services and benefits, to keep their organization at the forefront of our innovation and expertise,” said Michel Desgagne, Vice President of Operations at Genetec™.

For more information, please visit: www.genetec.com/support/lifecycle-management/ **SSR**

Axis is strengthening its VMS offering with the introduction of AXIS Camera Station 5



A free mobile app for Android and iOS allow the user to easily access the system remotely.

AXIS Camera Station 5 is a full-featured VMS for mid-size installations comprising from 4 to 50 IP cameras. Together with the AXIS S10 Series of network video recorders and Axis' IP products it offers a complete video surveillance monitoring and recording solution.

Axis Communications, the market leader in network video, introduces AXIS Camera Station 5, the latest version of its VMS offering for mid-size installations. The new version introduces hardware decoding, integration of third-party IP cameras and Axis Optimized Rendering for high-definition identification and smooth videos with up to three 4K video streams. A new mobile viewing app allows for easy remote monitoring.

The user interface of AXIS Camera Station has been designed for ease of use. The 'Operator Mode' provides a dedicated interface for efficient operation that meets the requirements of the occasional user as well as the more active user in installations such as larger retail stores, schools and manufacturing facilities.

AXIS Camera Station 5 introduces support for hardware decoding and Axis Optimized Rendering. The new 'Scrubbing' function allows users to quickly search through video footage from multiple cameras at the same time.

continue on page 15



A free mobile viewing app available for Android- and iOS-based mobile devices allows users to view live video from cameras as well as recorded video footage.

AXIS Camera Station 5 allows users to take full advantage of Axis' wide range of video surveillance cameras and technologies. It supports 360° overview recording, H.264 compression, multi-view streaming, Axis' Corridor Format, Axis' Zipstream technology and advanced camera-based video motion detection. Additional functionality can easily be added with ACAP applications.

Other security and video surveillance solutions from Axis such as door stations for easy identification and remote entry control or horn speakers for remote speaking in video surveillance applications can be used with AXIS Camera Station 5 as well. To meet specific needs, the new version also supports integration of third party IP cameras.

"System reliability is fundamental in any video surveillance installation" says Peter Friberg, Director Solution Management, Axis Communications. "AXIS Camera Station 5 together with our market leading portfolio of IP security products offer a proven and easy to use security solution for installations such as schools, manufacturing sites and more."

Existing AXIS Camera Station customers with up to 32 devices and all AXIS S10 Recorder customers regardless of system size will benefit from a free upgrade to AXIS Camera Station 5.

AXIS Camera Station 5 offers a 30-day free trial period and can be downloaded from www.axis.com/products/axis-camera-station.

For more information, please visit: www.axis.com SST



FUJIFILM
Value from Innovation

CCTV LENSES
For Security & Surveillance

FUJINON
CCTV LENS
for Security & Surveillance

BINOCULARS
For the Specialists



FUJIFILM Asia Pacific Pte Ltd
 10 New Industrial Road
 Fujifilm Building Singapore 536201
www.fujifilm.com.sg
 Tel: (65) 6383 9933 Fax: (65) 6383 5666



OT Systems And AFI Formed Strategic Partnership For Americas

OT Systems of America (OTSA) and American Fibertek (AFI) recently partnered to bring OTSA sales, marketing and operations under the AFI management, making AFI the exclusive partner of OT Systems in the Americas.

Jeff Smith, former OTSA operation manager, joined the AFI sales team and will continue to support the OTS brand of products. All other OT Systems global sales will continue to function from OT Systems headquarters in Hong Kong and other regional operations.



"This strategic partnership offers benefits to both companies, merging OTSA sales, marketing and general operations with AFI management and affording both brands increased participation in industry events and sales/marketing efforts," explains Domenic Isola, Business Development Director for OT Systems. "Further, an expanded product portfolio will offer AFI the ability to deliver to this shared customer base the seamless customer service functions of ordering, delivery and technical support."

OT Systems and AFI have a long history of developing and delivering high-quality, reliable, cost-effective products to the security industry. "This is a win-win for both companies and more importantly the security industry," said Isola. "AFI is a well-positioned and trusted company in the American market and we believe the strategic partnership will offer customers a seamless source, a one-stop-shop if you will, for security transmission projects large and small."

For more information, please visit: www.ot-systems.com 

Securex 2016 Seminar Programme Has Something For Everyone

Securex is Africa's leading security and fire exhibition for a number of reasons. Along with being the largest platform for industry's leading technologies and services and a host of visitor attractions, the exhibition presents a thought provoking educational seminar programme from 24 to 26 May at Gallagher Convention Centre in Midrand, Johannesburg.

"We believe that Securex affords industry professionals the unique opportunity to interact not only with best of breed exhibitors, but also with knowledgeable industry speakers who have tailored their seminar presentations to address pertinent and pressing needs within the market," says Joshua Low, Securex Event Director at Specialised Exhibitions.

Day 1 of the Securex Seminar Theatre programme will present a full-day lineup of trending topics such as ISO standards for the security industry; the importance of a long-term strategy for the survival of SMEs; bridging the

divide between security risk managers and procurement; African security trends for 2016 and beyond; cyber TSCM (technical surveillance countermeasures); five fundamentals to a safer city; and transporting and warehousing security.

"A particularly significant talk on 24 May, which we believe will attract a great deal of interest, is Gareth Newham's presentation on Understanding and tackling violent crime in South Africa. As the divisional head (governance) of the Crime & Justice Institute of Security Studies in Pretoria, he is amply qualified to discuss what factors have driven the notable increases in murder and armed robbery over the past three years. He will then offer some solutions on implementing a programme that will provide a sustainable way of reducing violent crime in the country," says Low.

Days 2 and 3 include an interactive SAIDSA workshop session from 10:15 to 12:30. On 25 May delegates can also look forward to presentations on information

continue on page 17



and cyber security; a panel discussion chaired by PSiRA, SIA and other industry experts on the issues facing the security industry; adopting effective risk assessment and management principles; and winning government tenders. Dawid Jacobs, CEO of Independent Identity Verification, will discuss the sensitive issue of identifying and addressing internal fraud, and managing people risk.

The schedule on 26 May includes the challenges facing the domestic and commercial security industry; determining whether your organisation is eavesdropping resistant; gearing up for doing business cross border; taking an honest look at the threat of terror in South Africa; the ongoing debate between technology and guarding as security solutions; and funding for security SMEs in terms of DTI incentives.

Visitor attractions include a New Products Display, the Ideco Networking Lounge and the Business Matchmaking Service sponsored by Ideco, which allows visitors to be pre-matched with relevant exhibitors. This initiative provides the opportunity for meetings to be arranged in advance of the exhibition, thereby maximising the visitor's

time at Securex 2016. The InFiRES seminar, hosted by FPASA will be run once again. Debuting this year is the SAIDSA Tech Man Competition. The event involves 20 of the top certified technicians in South Africa competing to wire up an intruder alarm system within a specified time, according to strict criteria. They will be judged on neatness, correct standards and installation techniques.

Securex is aligned with a number of industry bodies that include ASIS, ESDA, FFETA, FPASA, ISS, PSiRA, SAIS, SAIDSA, SASA and SIA.

Securex will again be co-located with A-OSH EXPO, Africa's leading source for occupational health and safety (OHS) products and services. The exhibition, now in its sixth year, covers all aspects of OHS risk analysis and alleviation.

Visitors can pre-register online at www.securex.co.za to avoid the queues at the exhibition.

For more information, please visit:
www.securex.co.za **SST**

In-vehicle and Video Surveillance Fanless Systems

Achieve High Efficiency, Lower TCO

Graphic Power
(Up to 1080p/720p @120fps)

IP Camera
(4 Ports 10/100 PoE, IEEE802.3af)

In-vehicle Power
(9-36Vdc, ISO-7637-2)

In-vehicle Extension
(GPS/G-sensor/Wi-Fi/3G/CANBus)

In-vehicle Certifications
(E-Mark, IEC-60721-3-5 5M3)

ADVANTECH
Enabling an Intelligent Planet

Strategic Partner

Hotline : 6442-1000
Inquiry: marketing.asg@advantech.com



Axis introduces high performance mini dome cameras for discreet indoor video surveillance

The compact palm-sized design of the new cameras in the AXIS M30 Series allows them to be discreetly installed in indoor locations. They can easily be repainted in any desired color to blend in with their environment and are ideally suited for video surveillance applications in hotels, restaurants, retail shops, offices and schools.

Axis Communications, the market leader in network video, introduces three new mini dome network cameras to the AXIS M30 Series. The new models offer HDTV image quality to capture all details, Wide Dynamic Range (WDR) technology to adapt to variable lighting conditions and Axis' Zipstream technology to reduce storage and bandwidth requirements without sacrificing important image details. The factory-focused cameras can be mounted on walls or ceilings and easily be leveled and directed in any direction using a 3-axis camera angle adjustment.

"Our new AXIS M30 cameras offer superb video quality in indoor environments at a very attractive price point. This makes them ideally suited for small and medium-sized business installations where many cameras are needed to cover the whole area without blind spots," says Erik Frännlid, Director of Product Management, Axis Communications. "The cameras are easy to install and come factory-focused. With their compact dimensions they can be mounted very discreetly. Customers get a high quality product that has undergone rigorous testing and offers great reliability. We underline this with three years warranty."

AXIS M3044-V provides HDTV 720p video at up to 30 fps. AXIS M3045-V provides HDTV 1080p video at 30 fps and offers HDMI support that enables live streaming to an HDTV monitor for public viewing. AXIS M3046-V provides 4MP resolution at up to 30 fps and offers HDMI support as well. AXIS M3046-V can also be used as an alternative to a camera with varifocal lens – its 4MP resolution and digital PTZ capability enable sharp, cropped out views in HDTV 1080p, for example, with a horizontal field of view between 95° and 125°.

The new cameras in the AXIS M30 Series provide multiple, individually configurable H.264 and Motion JPEG video streams. They offer video motion detection and active tampering alarm as well as support for third party video analytics applications such as people counting. Axis' Corridor Format makes full use of the sensor when



The new high performance mini dome network cameras are ideally suited for indoor video surveillance applications in hotels, restaurants, retail shops, offices and schools.

monitoring narrow areas such as staircases, hallways or aisles by providing vertically oriented video streams. The cameras have an Ethernet connector for network connectivity as well as power (PoE) and an integrated MicroSD/microSDHC memory card slot for edge storage applications.

AXIS M3044-V, AXIS M3045-V and AXIS M3046-V come with a three-year warranty. This will be the new standard for all Axis M-line products and a significant increase to the previous one-year warranty.

AXIS M30 cameras are supported by the industry's largest base of video management software through the Axis Application Development Partner (ADP) Program, and AXIS Camera Station. The cameras also include support for AXIS Camera Application Platform and ONVIF for easy system integration.

The new cameras in the AXIS M30 Series are planned to be available in April, 2016 through Axis distribution channels at suggested retail prices starting from USD 199.

For more information, please visit:
www.axis.com 



Our focus is providing you
with a 360-degree overview
in a single image

Never miss a thing with a 360-degree overview in a single image. Blind spots can seriously undermine the reliability of your video surveillance solution. With the FLEXIDOME IP panoramic 7000 cameras you can capture objects of interest with superb clarity, eliminate blind spots and always see the bigger picture even in situations where highest performance needs to meet aesthetics, like museums. The latest in-ceiling models add to this a nearly 'invisible' installation thanks to their paintable covers. So visitors can focus on art. **Learn more at www.boschsecurity.com/hdsecurity**



BOSCH
Invented for life



Hikvision Announces Integration with Paxton Net2 Access Control

Hikvision, the world’s leading supplier of video surveillance products and solutions, has announced the integration of its full range of network cameras and Network Video Recorders with Net2 access control system from Paxton, the UK market leader of electronic IP access control and door entry solutions. The integration will provide a user-friendly interface to manage building security more easily.



This seamless integration allows for the easy configuration of Hikvision Network Video Recorder (NVR) and camera detection with Net2 access control system. Hikvision cameras can be associated to individual doors, enabling users to monitor video linked with access events. This provides a more comprehensive service for users, enabling them to take necessary actions both in real-time and post-events.

Keen Yao, International Marketing Director at Hikvision, said: “The integration provides a value-added solution to Hikvision and Paxton customers. It will help identify and address suspicious activities, making security system management simple and more time-efficient.”

Gareth O’Hara, Paxton’s Sales and Marketing Director, said: “At Paxton, we encourage original thought. We develop innovative solutions that represent the company’s ethos of simplicity and quality, whilst answering the needs of the security market. It’s a pleasure to be working with Hikvision, a company who place as much importance on product innovation and diversification. We hope the solution will be an attractive proposition for a wide range of installers.”

For more information, please visit: www.hikvision.com **SST**

Leading cyber security services provider e-Cop relaunches as Quann

New company poised to grow four times in the next four years, establishing itself as Asia-Pacific’s leading cyber security player

e-Cop, a homegrown Managed Security Services Provider and a business unit of Singapore’s leading security organization Certis CISCO, has announced that it has relaunched as Quann. The initiative comes with the expansion of its security offerings and next-generation Security Operations Centers (SOCs), as well as investments in manpower development. This will enable Quann to expand its current regional footprint across Asia-Pacific and beyond.

The relaunch also introduces a new

logo and tagline, which represent Quann’s business focus and objectives. The logo symbolizes the continuous circle of protection afforded to customers. The new tagline – The art and science of being cyber secure – underlines Quann’s focus on applying the art of its experience and foresight with the science of breakthrough technology in designing customized solutions. “Following the relaunch, our new brand identity, renewed business focus and increased investments will bolster Quann’s capabilities to address the region’s growing need for

cyber security services. This positions us well to achieve our ambition of four-fold growth by 2020 and become Asia-Pacific’s leading cyber security player,” said Mr. Foo Siang-tse, Managing Director, Quann.

Incorporated in 2000, Quann is the most established cyber security services provider in Singapore. It is also one of the largest in Asia, with more than ten ISO/IEC 27001 certified, in-country SOC^s**. The SOC^s operate on Quann’s proprietary patented technologies that provide real-time, advanced big

continue on page 21



data analytics to swiftly alert clients of potential threats. From 2011 to 2015, the company recorded an annual revenue growth of more than 30 per cent per year, surpassing the industry's growth rate of 13.7 per cent*.

Mr. Foo explains: "Security is in our DNA and we provide a unique value proposition to our clients. By combining cutting-edge technologies with the skills, insights and experience of our cyber security professionals, we are able to provide organizations with comprehensive and customized security solutions, which are underpinned by robust processes and resilient infrastructure."

Growing beyond Asia

To realize its vision of becoming a global cyber security player, Quann intends to expand its infrastructure and operational footprint within and outside of Asia-Pacific. Following the relaunch, Quann will boost the capability of its SOCs through the integration of physical security monitoring; creating unified intelligent operating centres that provide clients with visibility over their physical and digital assets.

"This relaunch marks a significant milestone as Certis CISCO will now be the only comprehensive and integrated security services provider in Asia. It enables both Quann and Certis CISCO to grow, expand our reach and strengthen our

capabilities. At the same time, we are able to provide comprehensive, end-to-end solutions in both physical security and cyber security," said Mr. Paul Chong, President and CEO, Certis CISCO Security Pte Ltd.

Quann's relaunch comes at a time of growth for the Asia-Pacific cyber security market, which is expected to further expand from USD 17.19 billion in 2015 to USD 30.39 billion by 2020, according to a 2015 report from Micro Market Monitor. This is driven by an exponential increase in the number of cyber-attacks, brought about by the increasing dependence of governments, public utilities and enterprises on the Internet, wireless technologies and cloud-based services.

Harnessing Asia's leading security specialists

Quann recently launched the Quann Cyber Range Centre, which provides enterprises and professionals with a platform to enhance their skills in improving enterprise infrastructure resiliency and responding to cyber threats.

The company has also today signed Memoranda of Understanding (MOU) with the National University of Singapore and the Singapore Management University, to jointly develop enterprise cyber security training modules for students and security professionals from the industry.

"The shortage of skilled cyber security specialists and experienced managers with cyber security depth is a national problem. Many organizations fall short in their cyber security efforts despite their large investments in technology because they don't have the right expertise and the necessary management awareness of what to do. Our partnership with Quann is an important step in the strategic direction of building stronger skills and capabilities in cyber security," explains Steven Miller, Dean, School of Information Systems, Singapore Management University.

Forging new strategic alliances and expanding the Quann Partner Network

In addition, Quann has established strategic alliances with Palo Alto Networks and Team8 Industrial. They join the Quann Partner Network that comprises of leading best-of-breed cyber security companies.

"We are constantly in search of new technologies from around the world. In evaluating numerous technology vendors, we curate and test them carefully so that we offer our clients only the best end-to-end cyber security solutions from network, data, and applications, to cloud and critical infrastructure," added Mr. Foo.

For more information, please visit: www.quannsecurity.com 

Do you have news for us?
Good! Email us at sst@tradelinkmedia.com.sg





Sony introduces industry's highest sensitivity 4K network camera, SNC-VB770

New SNC-VB770 combines sensitivity, color and resolution for range of commercial applications compatible with a variety of E-mount interchangeable lens

Sony's latest 4K network camera SNC-VB770, offers the highest sensitivity in its class - under 0.004lx, ISO 409600 L. The new model combines ultra-high sensitivity with 4K resolution and advanced networking capabilities to give video professionals more flexibility to capture details even in extreme low-light conditions.

The new SNC-VB770 camera achieves high resolution and sensitivity in addition to low noise due to its image processing and full-frame 35mm Exmor sensor – all developed by Sony.

The sensor captures significantly more light with low noise than conventional camera sensors to realize drastic improvements in sensitivity. The result is low light performance in nearly pitch-black environments beyond the capabilities of human eyes.

The SNC-VB770's E-mount lens series accommodates a variety of lens options from wide angle to telephoto, allowing easy integration into a range of video capture applications including surveillance such as city, transportation, ports or critical infrastructure; web attraction, nature studies or scientific applications.

"The SNC-VB770 builds on Sony's image sensor strengths and applies this expertise to new applications in the commercial video capture realm," said Mr. Riki Nishimura, General Manager of Visual Security Solutions Division, Professional Solutions Company (PSAP) at Sony Electronics Asia Pacific. "Low-light conditions don't only occur at night. They exist 24/7 in museums, zoos, and municipal and commercial areas. This new camera and our expanding line of 4K network models give users more options to meet their demanding capture requirements."

With the exceptional detail provided by 4K technology (4 times the detail of full HD), security professionals, for example, can expand their wide area surveillance and capture, magnify and examine the smallest parts of a scene such as the appearance of an individual or a car license plate number – all with Sony's SNC-VB770.

The new camera uses area-specific noise reduction to selectively divide images into areas based on patterns (such as edges, textures and evenly colored areas like




blue skies) to efficiently reduce noise. Image quality is further enhanced with the camera's detail reproduction technology.

E-mount lenses are optimized to maximize the performance of the 35 mm full-frame sensor, keeping resolution high across the entire image area from the center to the lens periphery.

The camera's Intelligent Cropping feature allows users to capture a full view while cropping images in its native 4K resolution from multiple images at the same time, with either 3 or 5 simultaneous video streams. The Intelligent Cropping has two modes, static and dynamic.

Users can select "static" to see multiple specific areas in one scene. They can capture an overview image and the details of the cropped areas at the same time. "Dynamic" mode uses the intelligent motion to detect, crop and track moving objects automatically.

Intelligent Scene Capture automatically adjusts and adapts picture quality (brightness and color) depending on time, weather and lighting conditions. The camera also allows users to customize picture parameter presets for the best settings. Multiple picture configurations can be saved and switched either manually (using the Picture Profile mode) or according to schedule (Picture Profile Scheduler) to ensure the best picture quality day or night. Sony's SNC-VB770 will be available in Asia Pacific from August 2016 onwards.

For more information, please visit:
<http://pro.sony-asia.com> 



EtherWAN Systems releases new 8-port unmanaged Ethernet switches

EtherWAN Systems just added EX32008 and EX42008 series to their 8-port unmanaged Ethernet switch family. With slim form factor, the EX32008 and EX42008 offer compact and economic Ethernet connectivity solutions.

One 100BASE-FX port with SC, ST and WDM options are available from EtherWAN's new EX32008 and EX42008 series. They feature IEEE802.3az Energy Efficient Ethernet (EEE) standard, and IEEE802.1p Quality of Service (QoS) technology, supporting 2 priority markings carried in Virtual Area Network (VLAN) tags. On the top and bottom sides of EX32008 and EX42008 series is a 3-pin relay with normal open/close support, and a DIP-switch for turning on /off alarms for each port. Therefore, a port failure can be detected and reported immediately on site. The compact sizes of these switches allow easy installations and replacements of existing devices on the shelf.

EtherWAN's unmanaged switches are plug-n-play and ready to use, without configuration hassles.



When more fiber optic ports are required, EtherWAN's EX43026 and EX94026 are equipped with 2 fiber ports to fulfil the mission; the EX94000 series are sustainable with high ESD and hazardous locations with ISA12.12.01/ATEX compliance. Furthermore, EtherWAN's EX47000 series allows even more sophisticated connectivity up to 6 fiber optic ports with IEC61850-3 and EN50121-4 compliance for high EMI or railway applications.

For more information, please visit:
www.etherwan.com SST

Leading the evolution of key control.

From a single cabinet to a networked solution fully integrated with the Internet of Things, we have what you need to protect, control and track every key in your enterprise. We invented key management, and we just keep making it better for you.

Visit morsewatchmans.com to learn more


**MORSE
WATCHMANS**
think inside the box.



Product door not shown in image.
Fingerprint reader optional.



Siemens supports the development of energy-efficient buildings in tropical cities

- **Water-based cooling instead of air reduces space requirements**
- **3for2 concept allows developers to fit three floors into the space of two**
- **Building management system as a central control and data hub for energy management**

Pilot space in an office building in Singapore is home to an extraordinary energy efficiency project ETH Zurich has launched in cooperation with the Siemens Building Technologies Division. ETH Zurich researchers are using the Desigo CC building management system from Siemens to reduce the energy consumption of office buildings in tropical cities. Initially occupying 550 m², the pilot offices at United World College South East Asia will serve as a “living lab” for the researchers from ETH and Siemens. In the next two years, they will analyze which impact technology has on power consumption.



The 3for2 concept developed by ETH Zurich allows three floors to fit into the space normally required for two without reducing the usable room height. Some background information: In conventional buildings, up to a third of the enclosed volume is occupied by air conditioning equipment and ductwork for transporting dehumidified cold air. In contrast, the 3for2 concept uses low-profile, ceiling-mounted chilled beams for space-saving, low-noise water cooling, as well as distributed chillers behind the façade and LED lighting panels. This lowers both energy needs and construction costs. The Desigo CC building management system controls ventilation, air conditioning and the entire room automation, including lighting, and transmits all relevant data to the Siemens Navigator energy management platform.

The offices officially opened in mid-January 2016, and the results from the first few weeks of operation have been very promising. The energy consumption in the 3for2 space is among the lowest in all of Singapore. This is significant because the booming city-state in Southeast Asia has set ambitious environmental goals for itself: Singapore wants to reduce its energy needs by 35 percent by the year 2030. Currently, about 60 percent of the electricity used in buildings goes toward air conditioning.

Singapore's hot and humid tropical climate is a worst-case scenario when it comes to creating a comfortable indoor environment. Helmut Macht, CTO of Building Technologies, says: “Singapore is the perfect place to research and test energy-efficient innovative technologies. What works here will also be suitable for other densely populated urban areas in tropical regions all over the world.”

For more information, please visit: www.siemens.com/buildingtechnologies **ESST**



Hikvision's Third-Generation Turbo HD brings 4K Video to Analog Systems

Now with higher video performance, increased compression efficiency, longer transmission distances and Power over Coax technology while retaining seamless compatibility with existing analog and network IP cameras from most manufacturers

Analog CCTV users can now enjoy 5MP HDTV and 4K video resolution while safeguarding their investment with existing cabling infrastructure. Hikvision is launching its third-generation analog HD solution. Turbo HD 3.0 not only ensures higher video performance with up to 5MP HDTV input and 4K video output but also supports latency-free 1080p HD video up to 800m and HD720p transmission up to 1200m over coaxial cable.

1080p HD, 5MP HDTV and 4K video performance

Turbo HD 3.0 retains the ease-of-use of an analog system while offering up to 5MP video and makes high-definition surveillance systems possible without replacing existing cabling or switching to IP cameras. Turbo HD 3.0 uses HDTV technology, eliminating compatibility issues whenever you have to mix old technology with new products, and making installation simple and cost-effective.

H.264+ compression technology

Hikvision's high-calibre H.264+ compression technology improves

encoding efficiency by up to 50% compared to standard H.264, dramatically reducing bitrates while maintaining high transmission quality without losing forensic details. With data costs a high priority for most users, Hikvision's H.264+ reduces memory demands in existing DVRs/NVRs and markedly reduces data storage costs.

Up to 1200m HD transmission via coaxial cable

Hikvision Turbo HD 3.0 technology guarantees up to 1200 meters of high-quality HD720p transmission and up to 800 meters of HD1080p video via coaxial cable, distances unattainable by HD-SDI or conventional analog solutions. The increased transmission distances mean that larger projects can be tackled while existing systems can be extended quickly and easily.

Easier installation with Power-over-Coax (PoC)

Hikvision's Power-over-Coax (PoC) feature radically simplifies installation, as one coaxial cable carries both the video signal and the power supply. This translates to reduced installation time, which also translates to a reduction in both installation and material costs! In addition, the Turbo HD 3.0 analog

solution supports UTC for remote set-up and configuration and enables control of the OSD menu and PTZ control via coaxial cable, enabling faster camera installation and easier management.

Extensive compatibility with the majority of products from other manufacturers

Hikvision offers a comprehensive range of 1080p and 720p cameras including bullet, turret, and dome types – including PTZ – for indoor and outdoor use. Of note is Hikvision's full range EXIR series with 2MP and 3MP resolution, which excels in superior image clarity in ultra-low light environment. Most feature advanced technologies such as digital noise reduction, ultra-low-light illumination, Smart infrared (IR), motorized varifocal lenses, IP66 rating, and vandal-proof housings. A 5MP fisheye model will be available in the coming Q2.

The Turbo HD 3.0 DVR products are available in 1/1.5/2U sizes, supporting camera input with up to 5MP resolution. The units could fit in different applications from small to large scale with ONVIF-compliant IP cameras supported for necessary system expansion.

Hikvision's advanced, industry-leading manufacturing technologies also ensure that the flexible Turbo HD 3.0 solution offers seamless compatibility with the majority of products from other manufacturers.

For more information, please visit: www.hikvision.com 





Valdosta State University Deploys Benefits of IP VMS



Upgrade to Pelco Endura system provides needed reliability, flexibility, and video analytics

Valdosta State University, a large, open, university campus in southern Georgia, with more than 11,500 students spread across nearly 50 buildings, wanted to upgrade and expand their existing analogue video surveillance system. Campus management needed to cover new building additions to their facility, as well as begin the migration toward a substantial IP-based, integrated camera system. Located equal distance from Atlanta and Orlando, the Valdosta State University campus boasts beautiful Spanish Mission architecture nestled among pines and palms. Its campus lies at the heart of metropolitan Valdosta, a city with true southern charm.

A long time proponent of video security, Valdosta State University began their deployment in 2005 with 76 Pelco analog cameras and several DX Series





digital video recorders (DVRs), with the purpose of increasing the safety and security of the university's students, employees and visitors. A few years later, the university's video system became the responsibility of VSU's Information Security Department, where the system has grown almost 700%. In late 2008, VSU began using Digital Sentry DVR systems to cover the university's two parking decks with more than 125 cameras.

Last year, VSU began the transition to a Pelco Endura IP VMS platform in order to allow for greater flexibility, ease of camera deployment across geographical and network locations, and mission-critical reliability and stability. Additionally, university management wanted to take advantage of the Endura system's advanced video analytics for future facility planning.

According to William C. Moore, former Chief Information Security Officer for Valdosta State University, the 2013 deployment of the Endura system replaced 67% of the DVR and Digital Sentry-based video surveillance systems, and increased the overall number of cameras by 70%. The number of cameras and the scope of video coverage have grown at an outstanding pace since the transition to the Endura platform and its ease of deployment.

"A few of our initiatives include using video analytics to provide strategic data such as pedestrian traffic flow patterns, which will allow administrators to make better decisions in meeting campus needs," said Moore. "The same traffic flow data can also be used by University Police to better ensure the safety of our students, employees and visitors. Looking forward, we plan to use Pelco video analytics to identify anomalies, and help us become even more proactive in providing for the safety and security of people and property."

"Also, a critical issue we needed to overcome was finding cameras to cover driveway/parking entrances to the campus which have ever-changing lighting conditions," added Moore. "Sarix WDR cameras were specifically purchased and configured to decrease the headlight bloom and windshield glare so that the video could capture both the license plate information and be able to see the driver of the vehicle through the glare."

Beyond live and recorded video surveillance, VSU management has implemented a system that documents and alerts staff of entry into restricted areas where confidential data and resources are stored. The new alert system captures and emails short video clips of the person entering the area to responsible parties. The university anticipates using similar and more robust access alerting in their future video and traffic planning.

This year, the Information Security Department began researching the ability to separate video storage based on purpose and data classification such as safety/security and classroom instruction. After verifying that the Endura system could



store video on separate NSMs based on separate data classifications, officials began deploying Pelco cameras along with other recording equipment within the mock nursing clinical areas of VSU's 140,000-square-foot Health Sciences and Business Administration building.

"These recordings will be used to better critique and assess nursing students and possibly allow the students to provide future employers a video portfolio of their clinical procedures in a mock environment," said Moore. "This innovative use of existing technology is a project that while still underway has great promise at a fraction of the cost of the originally proposed system."

The Integration and Installation Team "Our integrator for the Endura system was Jason O'Brien and Jammie Stalvey with Ace Technologies. They have been a great partner in the overall transition and have been a key element for our pilot Nursing clinical cameras for instructional use," added Moore. "David Kolodkin with our Pelco distributor, SpecPoint, has been great to work with as we transitioned from analog to IP cameras."

VSU has sent a technician to Pelco Endura training and will be sending a second employee this year. Haugabrook explained that the Endura training provided an excellent cornerstone for many of their designs and management processes for the Endura system, which has saved the university a good deal of time and money.

IP VMS for Mission Critical Surveillance

Endura is the ideal video management system (VMS) for mission-critical surveillance operations requiring around-the-clock monitoring and unwavering reliability. It provides the tools security and IT professionals need to effectively safeguard people and property. With the ability to scale thousands of cameras, Endura is designed to fit a wide range of applications - including prisons, airports, casinos, and city surveillance - where unmatched fault tolerance and system integrity are mandatory. Customizable permission settings and unlimited user profiles enable access for multiple stakeholders, driving greater return on security investment across your enterprise.

Sarix with SureVision Technology

Traditionally, when a scene contains both brightly lit and shaded areas as well as intense light sources, image quality has been known to suffer. But SureVision technology, exclusive to Sarix cameras, combines Wide Dynamic Range along with Low Light and Anti-Bloom capabilities into one highly intelligent technology. Sarix cameras with SureVision automatically deliver the best possible image.

For more information, please visit: www.pelco.com **ESST**





21 22 23
SEPTEMBER 2016

Hall 5, IMPACT Exhibition & Convention Center, Bangkok, Thailand

www.maintenance-asia.com
www.greenbuilding-asia.com

facebook.com/BMAMExpo
facebook.com/GBRExpo

linkedin.com/in/bmamexpoasia
linkedin.com/in/gbrexpoasia

Youtube: BMAM & GBR Expo Asia

Opening the Doors towards Innovations in Building Maintenance, Facilities Management and Green Building

Expected trade visitors
10,000
Exhibit area
6,750 sqm.

International presence
36 countries
Expected delegates
1,500



Contact us now to BOOK YOUR SPACE!

Mr. Chanon Ekarattanakul (Thailand)
Tel: +66 (0) 2833 5208
Email: chanone@impact.co.th

Organizers



A part of Asian Construction Week





Security trends in Thailand 2016



Ratch Talabhat, CEO,
Maxwell Integration CO, LTD

Introduction – How has the security industry fluctuated or changed in the past 10 years?

IndoChina is a developing region in Asia that has been steadily rising in the world market over the past years. CEO of Maxwell Integration, Mr Ratch Talabhat stated that over the past decade, the security market in Thailand has been growing by more than 400%.

The current trends that are developing in IndoChina in 2016

This is due to the fact that security products are not only sought after by the rich or for commercial purposes. The general consumer has become more educated and informed about security products and thus, manufacturers are shifting their attention to make security products more user friendly and feature more built-in functions that simultaneously cover multiple aspects of security.



For instance, a combination of a burglar alarm system, surveillance camera and smart home system in a single product, serves as an example that there has been a rise in demand for products related to home security amongst the general consumer market.

Systems will be fully integrated to fulfil the completeness of usage as much as possible. Moreover, due to advancements in technology and the option for cloud-based control via a smart phone, users can get alerts, and be more proactive in monitoring and controlling their surveillance systems. This is one of the most attractive features that serve to integrate a system with its user flawlessly.

Thailand on embracing security trends and technologies

Mr Talabhat also mentioned that the integration of smart home and IoT (Internet of Things) security products would initially create impact and attractiveness to the market. However, he stated that the combination of security products would impact end and home users more than it would with commercial and industrial consumers.

Incorporating new technology would however take several years, as consumers' would not easily adapt to fitting such technologies into everyday life and that conventional security solutions will still remain as the fundamental necessity for all organizations in the majority of the coming years.

In what ways would the latest security trends in Thailand have an impact on both the regional and global scale?

In the near future, latest security technology will revolve around consumers' behaviour; consumers' generally spend more time on their smartphones and with the IoT helping to integrate people with systems both regionally and globally the development of IoT platforms will undoubtedly increase the consumption of security products. This may cause people to buy the products not only because of security reasons but could also be due to a lifestyle trend.

Global security trends impacting industry growth in Thailand

The recent trend in the industry has shifted towards end users and home users as the market is a lot bigger and more lucrative, catering to these audiences usually revolve around price competition and even DIY products to curb pricing issues.

The problem is that some manufacturers emphasize on costs to increase their competitiveness in the market thus forsaking the quality of their products.

Ironically, inferior products may lead to minor errors that could then affect properties or lives that the product was built to protect. **SST**



Arizona State University - Mobile Access Pilot

Pilot of Near Field Communications (NFC) mobile access technology showcases the improved security and convenience of using smartphones carrying digital keys to open doors at universities and other campus environments.

Arizona State University (ASU) is committed to the on-going use and management of advanced technology, including solutions that optimize security and convenience for students, faculty and staff. In August 2011, the university launched a ground-breaking project to evaluate the benefits of moving its student housing keys onto NFC smartphones. Pilot participants accessed a campus residence hall and selected resident rooms using HID Global's iCLASS® Secure Identity Object (SIO™) Enabled (iCLASS SE) credentials that were embedded into a variety of popular smartphones connected to all major networks.

HID Global's iCLASS SE platform is based on a new, standards-based, technology-independent and flexible data structure that significantly improves security, portability and performance. It also extends physical access control beyond traditional physical cards and readers to enable the deployment of digital keys and secure identity credentials on smartphones and other devices. Initial feedback from the ASU pilot project has been very positive. Participants report that, while they have often left their rooms without their keys and Sun Card campus IDs, they never forget their phones. Carrying their Sun Card credentials inside their NFC smartphones gives them confidence that they can always get back into their residence hall or room.

Challenges

A leading innovator and long-time user of iCLASS access control credentials, ASU organizes on-campus housing for approximately 13,000 students living in residence halls across four campuses. The university first adopted iCLASS technology for its Sun Cards in 2004 as part of a major safety and security initiative that was initially focused on ASU's labs and other sensitive spaces. The initiative was extended over the years to include residential areas with a focus on student safety and security. Today, students, faculty and staff carry a Sun Card for secure access to a variety of facilities.



The university also was familiar with NFC technology and could envision providing services similar to its Sun Cards in smartphones. "When I first saw this technology used in other applications, I recognized the benefits it could bring to a university campus," says Laura Ploughe, director of business applications and fiscal control, University Business Services, at Arizona State University.

As with any campus housing program, assigning rooms and distributing keys is traditionally a significant endeavor that takes many days and involves a large number of campus staff members and volunteers. Throughout the school year, residential life and facility management also must handle room re-assignments and the tasks of retrieving old keys and issuing new ones. There also is the matter of lost keys and associated costs. Although Sun Cards make the administrative tasks of key management



easier, Sun Card management, too, is onerous. Moving access credentials to the phone seemed easier.

ASU was also keenly aware of the role cell phones play in students' lives. "Mobile phones are at the heart of campus life and play a major role in facilitating the students' social connections," Ploughe says. "We are always looking for ways to help students succeed, and to engage with and deliver services to them in the same manner they engage with each other using their phones and social networks." ASU felt the cell phone was an ideal platform for carrying digital residence hall and room keys alongside the device's other voice, data, memo, music, navigation, camera and game functionality. The university wanted to gain student feedback about the convenience and perceived security of using their smartphones for physical access control. It also wanted to determine the viability of transferring identity to



a ubiquitous device that provides secure identity and can also be used for all functions associated with student life around campus.

Solution

HID Global deployed iCLASS SE readers and HES® electric strikes from ASSA ABLOY on secured doors to ASU's Palo Verde Main hall. The readers communicate with a Lenel OnGuard® system installed by Kratos® | HBE. HID technology-enabled Sargent Profile Series electromechanical locks from ASSA ABLOY were deployed on selected resident room doors in the hall. The 27 students and five staff members participating in the pilot were given NFC smartphones carrying next-generation iCLASS SE technology.

To open door locks, pilot participants presented the phones to a door reader just like they do with their existing iCLASS-based Sun Cards. The embedded NFC short-range wireless communications technology in each of the phones enabled them to exchange access control data between the phones and door locks. All participants used their phones for residence hall access, and some also used them with a unique additional digital key and PIN to open individual room doors. The technology also supports over-the-air provisioning and management of digital keys, which simplifies access control administration.

The underlying technology that makes this all possible is HID Global's next-generation iCLASS SE access control platform and its SIO data structure. SIOs on the credential side and SIO interpreters on the reader side perform similar functions to traditional cards and readers, with significantly improved security, portability and performance. SIO technology operates within HID Global's Trusted Identity Platform® (TIP™) framework, which is designed to support a secure and trusted boundary for cryptographic key delivery. The TIP framework ensures that SIO digital credentials can be securely provisioned on a variety of credential platforms, including smartphones and other mobile devices, no matter where users are located or how they are connected.

Benefits

According to Ploughe, the pilot project has proven that a ubiquitous device can converge secure identity credentials and physical access control, and has endorsed the promise that NFC technology holds within the campus environment. The results from a participant survey included the following highlights:



- Almost 79% of respondents reported that using a smartphone to unlock a door is at least as convenient as or more convenient than using their existing Sun Card.
- 55% reported that the mobile access transactions were at least as fast as using traditional Sun Cards.
- Almost 90% of respondents said they would want to use a smartphone to open all doors on the ASU campus.
- 85% of respondents said they were approached by others who saw them using their smartphones to unlock doors and had questions or comments about the technology. The majority of questions were how and where to get a similar smartphone for themselves, and the majority of comments were about the “coolness” of the technology.
- Nearly all respondents expressed an interest to use their smartphone for other applications including meal, ticket and merchandise purchases, student recreation center access, transit, and other typical Sun Card applications.



Mobile access control delivers benefits to both administrators and the cell phone owner. Lost phones carrying digital keys are more likely to be noticed and reported than physical keys or ID cards. The mobile access control model also streamlines credential distribution and retrieval by enabling remote credential management throughout its lifecycle. It is also easier to modify applications and security parameters via software downloads and firmware updates, which eliminates the risk of key and/or card copying and simplifies the task of temporarily issuing new keys and cancelling them when lost or stolen.



“We were very impressed with the convenience of putting Sun Card credentials on NFC smartphones, as well as the enhanced security that is delivered by this next-generation of advanced access control system,” Plouge says.

For more information, please visit: www.hidglobal.com SST



Security Solutions Today

Security Solutions Today (SST) is a leading publication on the latest security information, trends and technology, and products that include Access Control, CCTV/IP Surveillance, Intrusion Detection and Integrated Security Systems.

SST is packed with the latest developments in security technologies and trends, events, previews and reviews of major global trade shows, product launches and security installations worldwide.



Scan to visit our website

TRADE LINK MEDIA PTE LTD

101 Lorong 23 Geylang #06-04 Prosper House Singapore 388399 T: (65) 6842 2580 F: (65) 6745 9517 W: www.tradelinkmedia.com.sg E: info@tradelinkmedia.com.sg



Auburn Upgrades To Alvarado Optical Turnstiles

Thousands of Auburn University students and staff use the university's new \$72 million, 240,000 square-foot Recreation & Wellness Center regularly. The recreation center, which opened in 2013, has several notable features featuring one of the largest indoor tracks in the country. To manage access into the facility, Auburn incorporated barrier optical turnstiles. After a bad experience with another turnstile manufacturer, Auburn replaced the originally installed equipment with Alvarado's Supervisor 5000 (SU5000) optical turnstiles and an SW 1000 tandem motorized gate. The facility now has reliable equipment that controls access into and out of the facility. Users present ID cards at designated entry only turnstiles to access the facility. To exit, users pass through designated exit turnstiles which open automatically as users exit.

Three SU5000 optical turnstiles are used for entry. Two SU5000 optical turnstiles are used for exit. The tandem motorized gate has a wide 72" passage width that allows large equipment to be moved in and out of the facility and supports the mass entry of large tour groups.

Background

Auburn's path to the installation of dependable Alvarado equipment was less than smooth. Initially, Auburn installed another manufacturer's product. Shortly after the Recreation & Wellness Centre's grand opening, however, the original barrier optical turnstiles started malfunctioning. The manufacturer tried several fixes but could never get the equipment to operate reliably. Ultimately the

manufacturer quit returning calls, leaving the university in the undesirable position of either trying to operate with the original poor performing products or replacing them outright.

Alvarado Turnstile solution

Auburn sought advice from HOK sports, the well-known sports facilities architectural firm. HOK sports recommended the best course would be to replace the poor performing equipment with reliable Alvarado products.

Auburn, understandably, was very cautious after its bad experience. In addition to seeking advice from HOK, Auburn officials sought references from other universities using optical turnstiles at their recreation center facilities.

The answer that Auburn heard again and again: go with Alvarado – an American company with US based manufacturing, service and support that have been in business since 1956. Numerous universities use Alvarado optical products, including the University of Georgia, University of Nebraska, University of Colorado, University of Iowa, Rice University and Florida State University, among many others.

"Our goal is provide our clients with products and solutions that best meet their requirements. We also stress the benefits of working with an established U.S. owned turnstile manufacturer with a fully staffed technical and support department," said Nick Simon, National Sales Manager for Alvarado.

After a formal bidding process,



Nick Simon, National Security Sales Manager at Alvarado Manufacturing

Auburn chose Alvarado's SU5000 optical turnstiles and motorized gate. Alvarado assisted during the installation by providing personnel on site to provide oversight and assist with initial configuration. "We offer on site commissioning as a service to our customers and after Auburn's prior bad experience we wanted to assist them in every way we could to ensure the success of the project," said Simon.

Alvarado's SU5000 optical turnstiles and motorized gates are state of the art solutions that provide the very latest in optical detection and operational technology. Alvarado products integrate with any access control system and any card or biometric reader technology. The SU5000 is an architecturally inspired turnstile that is the thinnest motorized optical on the market. The SU5000 blends and accentuates any recreation center or corporate lobby environment.

Alvarado has hundreds of optical turnstile installations in the US and worldwide.

For more information, please visit:
www.alvaradomfg.com **SST**



International Student Identity Card (ISIC) France Implements Rapid and Robust Secure Card Issuance for Student ID Cards

The ISIC Association, established in 1953 is a non-profit organization that has created the International Student Identity Card (ISIC), which is issued in over 130 countries. The ISIC card is the only internationally recognized student ID card. Cardholders receive preferential access to over 42,000 products and services, including travel, restaurants, museums and sports clubs. ISIC Global is headquartered in Amsterdam, the Netherlands, with offices worldwide.



Challenges

ISIC France was seeking to launch a rapid, cost-effective and robust online secure card issuance portal solution, to provide high-quality, multifunctional student ID cards to the grandes écoles universities.

Key selection criteria included:

- Capable of securely printing high quality and durable personalized electronic student cards that would last for their entire time at the university.
- Print, laminate and encode smart cards in a single process with encryption support.
- Provide next-generation card personalization software to design ISIC France's online portal for issuing and managing student ID cards.
- Ease of deployment and administration.
- A scalable and upgradeable solution with the ability to issue large volumes of ID cards quickly.

HID Global was selected based on this stringent criteria and its long-standing relationship with ISIC France.

Solutions

ISIC France launched its secure online portal using HID Global's AsureID® 7

Card Personalization Software Development Kit (SDK), which enabled them to efficiently print and manage secure student ID cards, as well as provide updates to grandes écoles universities, such as card issuance dates and printing status of cards in process. HID Global's FARGO® HDP5000 and FARGO DTC4500 printer/encoders produce durable and highly functional student ID cards, based on the university's requirements and budget. On average, 15 printers are used to produce a maximum 15,000 cards a day.

By utilizing HID Global's customizable, high-definition and direct-to-card printing capabilities, ISIC France now has the most advanced, easily upgradable and scalable solution on the market, ensuring it can provide



universities with the latest, most secure technology available.

HID Global partnered very closely with regional secure card issuance experts, SELP and ISLOG to meet ISIC France’s requirements.

“HID Global is a globally trusted brand and continues to be at the forefront of the card personalization industry with solutions that successfully meet our needs for securely issuing high volumes of student ID cards,” said Lilian Leclercq Director with ISIC France.

Results

ISIC France now provides a hassle-free, on-site badging service to the grandes écoles universities. It offers seamless customer service to over 126 French universities, issuing approximately 150,000 student ID cards every year via its online portal that is flexible, reliable and scalable.

The improved, faster customer service made possible using FARGO printers/encoders is particularly advantageous during peak periods, such as the start of a student year, when high volumes of ID cards need to be printed. Multifunctional,

durable ID cards give students a single card solution for a wide range of applications, including access to doors, data, library resources, car parking as well as cashless payments and vending machine purchases. This offers students a convenient and secure campus experience.


HID Global’s printing solutions also provide ISIC France with significant cost savings, without compromising quality. The retransfer technology allows for a wide variety of card materials; a dye-sublimation image can be imprinted onto an intermediate transfer film that is then retransferred to the card surface. This is a key aspect of HID Global’s high-definition, secure printing solutions and higher throughput speeds greatly increased card yield. With the customizable printing options, ISIC France is able to offer made-to-order imaging, for its co-branded programs, and shorter cycle times.

“HID Global’s latest FARGO printer/encoders solutions andASUREID card personalization software helped us provide a fast, secure and high quality printing solution to the grandes



écoles universities for issuing student ID cards in short time periods. This is thanks to the ease of integration, high throughput speeds, retransfer print technology, secure encoding and lamination,” said Lilian Leclercq Director with ISIC France. In addition, student ID cards are being used for time and attendance purposes.

ISIC France and HID Global are now planning to implement a mobile ID access solution, so students can use their smartphones to supplement or even replace their current access control cards.

For more information, please visit: www.hidglobal.com 



SOUTHEAST ASIA **building**
SUSTAINABLE ARCHITECTURE • INTERIOR DESIGN • LANDSCAPING

A leading architectural magazine in Asia featuring current trends in building design, interior design, landscape architecture and facility management, plus news, projects, product reviews and reports on international trade fairs since 1974.



Scan to visit our website

TRADE LINK MEDIA PTE LTD

101 Lorong 23 Geylang #06-04 Prosper House Singapore 388399 T: (65) 6842 2580 F: (65) 6745 9517 W: www.tradelinkmedia.com.sg E: info@tradelinkmedia.com.sg



Univeristy Of San Francisco



Universities and schools around the world strive to provide safe and secure environments for their students and staff without hampering their overall experience or compromising their privacy.

These campuses may be very crowded at times. Technology can help to achieve these goals cost effectively despite the very difficult University environment.

One University that stands out in its effective use of the available technology is the University of San Francisco (USF). The university is over 150 years old and situated in

the middle of San Francisco. It is a very open plan campus with over 10000 students enrolled and about 3500 students live on the campus.

The Challenge

USF provides on-campus housing through its various Halls of Residence. These residential halls are frequently visited by large number of residents and non-residents. The security challenge is to ensure that these halls welcome those who are entitled to be there while ensuring unwanted people are not let in. Initially they had tried to address this using a card based access system. However the security challenge lay

in coping with the normal human behavior of some students which may create an unsafe environment for others. For example, students would often “lend” their access cards to outsiders who were not normally permitted to enter the premises without registering. Students would prop open doors which happened all of the time in these residential halls. They also had a phenomenon called ‘door surfing’ where one person would open the door and a group would walk in without showing an ID. The university’s card based access control system had not proved effective in these scenarios.

“Safety and Security for all



universities, is usually the number 1 priority. And, that is because you have responsibility not only to the students but to your staff and anybody who really comes to the campus” said Peter Novak, Vice Provost, Student Life, USF.

The University had been using Cisco technology for many years. Everything from core infrastructure to switches was Cisco based. The university had leveraged this investment into the security space and had installed a Cisco based general CCTV surveillance system for recording and display. The system could be manually searched for relevant information after the event but it did not enable them to preemptively address their issue.

They needed a technology that could cope with the very crowded environments that they often had without causing massive delays at entry points.

The system had to be open enough to integrate seamlessly with their existing CISCO infrastructure and it was important that it did not hamper the easy going and friendly lifestyle that one expects at a University. Maintaining the friendly experience for residents and visitors was an important design criteria that had to live alongside the need to create a safe environment. It had to be easy to implement and easy to use by the student volunteers who manned the reception desks at the Halls of Residence.

The biggest challenge was the uncontrolled and crowded nature of the residence halls. It was not possible for a receptionist/student worker to check the ID of every visitor with 100% accuracy. In fact the receptionist usually could not differentiate a resident from a visitor. Hence, the technology sought had to work efficiently in crowded situations and it had to detect and recognize multiple faces simultaneously in a totally uncontrolled environment with good accuracy.

The Solution

Jason Rossi, Director of Campus Security Systems, USF said “We sought to use technology to help address this challenge. We decided to partner with iOmniscient to help enhance our safety and campus experience.”

After extensive trials, the University of San Francisco decided to use iOmniscient’s Face Recognition in a

Crowd system for its Halls of Residence. The system recognises and keeps track of residents as they enter and highlights non-residents for the receptionist who can then check their ID cards. This system was selected because it had the unique internationally patented ability to handle crowded environments.

Mr Rossi added, “Residence Halls are very high traffic environments which make it difficult for traditional access control technologies to verify every person who is entering. By using iOmniscient’s facial recognition system we now know who has entered the building, and have improved our ability to identify visitors who need to check in with the attendant.”

iOmniscient’s Facial Recognition system can track a person’s face in an uncontrolled environment and also across non overlapping cameras. This ‘Facial Recognition in a crowd’ system is able to check against a database in real-time to identify those who are not authorized to enter.

“As soon as somebody walks out the front door, we know if they belong there or not and we are able to stop them because in a giant group of people, we can actually point out the people who have set the system off” said Kelsey Sexton, Community Office Manager & Student, USF.

Once the system detects an unauthorised entry into the residence hall, it sends an alarm/notification to the existing security system. The alarm is also received on the smartphone of the nearest authorized responder in the area. This drastically reduces the response time. The responder can view the video related to the alarm and get more details for taking an informed decision.

The Technology

iOmniscient’s Facial Recognition in a crowd system has multiple international patents enabling it to recognize individuals in uncontrolled situations even with very low resolution cameras. It excels even in environments with variable lighting and continuous movement despite low resolutions and variable facial angles. It is in fact the only system available worldwide which can operate effectively in uncontrolled crowds. Hence it has been used in airports, railways and stadiums around the world and is a key component of iOmniscient’s offering for Smart Cities.



Some of the key capabilities are:

- It can operate with low resolution cameras at a far distance. Requiring only 22 pixels between the eyes a standard two megapixel camera can recognize people at 20m.
- It does not suffer from catastrophic failures and can continue to recognize people (albeit with slightly lower accuracy) right down to 12 pixels between the eyes.
- It excels in uncontrolled environments with non-cooperative individuals and will recognize them if it can see their face including both eyes.
- It can cope with hats, spectacles, facial hair and odd facial expressions.
- It can detect multiple faces in a crowd and simultaneously recognize them by comparing them with one or more specified databases. On a 1 megapixel camera it can recognize up to 75 faces in a scene simultaneously.
- It recognizes faces from variable facial angles
- It has the patented ability to find the nearest first responder and send them information of an illegal entry

The individual does not have to stand still in front of the camera in a well lit environment to get his face recognized by the system - which would be quite impractical in the free-flowing campus situation.

Mr Rossi concluded that this system truly enhanced the safety as well as the overall campus experience of his students. As a result, the University of San Francisco has been able to successfully make its residence halls comfortable and secure to live in. The incidents

of illegal entry have been drastically reduced and the overall experience has improved. Moreover, by integrating iOmniscient's Face recognition system with their legacy systems they were able to leverage their prior investment in video surveillance infrastructure.

Apart from Face Recognition, iOmniscient's Multimedia Analytics offers variety of solutions for schools and universities such as:

- Detecting and tracking black-listed people entering the campus using Facial Recognition in a crowd system.
- Theft prevention system to protect valuable property (e.g. in computer rooms, library, convocation halls).
- Graffiti and Vandalism detection
- Detection of man-down or fighting behaviour accompanied with both video and voice recognition system.
- Detection of other abnormal behaviour (e.g. running, loitering etc.) particularly after hours.
- Perimeter protection and to prevent unauthorised access after-hours.
- Surveillance system health-check to prevent camera tampering or sabotage.
- Crowd management and control during special events.
- Prevent vehicle speeding within school zones.
- Using video analytics for Smoke and Fire detection where conventional smoke detection cannot be effective such as areas with high ceilings.

For more information, please visit:
www.iomniscient.com



TAFE Qld Gold Coast Opens Door To Smart Access Control

Introduction

TAFE Qld Gold Coast, a vocational education and training (VET) organization in Queensland, Australia, has installed 167 smart locks from SALTO Systems to handle their electronic security and access control requirements.

The College recently completed a \$7 million refurbishment programme at its Southport campus (one of the College's four campuses the others being at Ashmore, Coolangatta and Coomera) part of which has seen improvements to its infrastructure within the academic and administrative areas. Of these, one of the prime requirements was the need to eliminate problems with key control caused by using an old mechanical keying system.

Challenge

Hayden Flett, SALTO Systems Business Development Manager, says "One of the main problems with building management when doors are secured by conventional mechanical locks is key control.

Solution

The SALTO Virtual Network (SVN) revolutionises the problems associated with key control as it



eliminates the need to replace locks if key security is breached due to the loss or theft of keys. It allows keys and locks to be updated, restricted or deleted remotely and is widely used in educational establishments worldwide.

As the TAFE Qld Gold Coast campus at Coomera had SALTO installed from new during its construction four years ago, when the Southport campus came to being refurbished it was again SALTO that was selected."

Flett continues "The local dealer FRANKsecure carried out the installation, fitting offline escutcheons and panic bars to a mix

of classrooms, offices, entry doors and boom gates and these, together with lift call functions, are now all controlled by SALTO smart access.

Conclusion

The customer loves the fact that no hard cabling was needed and that each standalone door provides feedback for proactive maintenance purposes. Besides access control they also use their new smart keys for library services, photocopying as well as student ID and one key can be used at multiple campuses."

For more information, please visit: www.saltosystems.com SST



Schools, Universities, College Campuses Look To Panoramic Video For Unique Surveillance Solutions



Pelco understands that the challenge for security professionals and educational administrators is how to effectively deal with a very wide range of issues on a daily basis, while maintaining a safe, secure and fear-free learning environment — without developing a fortress mentality.

Video surveillance established its credentials long ago as a powerful tool for schools, colleges and universities to combat all forms of criminal activity and anti-social behavior. Now, Optera multi-sensor panoramic cameras eliminate the gaps in coverage and put you in the middle of the scene with its seamless panomersive experience.

Pelco's Optera 180°, 270°, and 360° multi-sensor panomersive cameras and Evolution fisheye cameras deliver Total Situational Awareness which offers so much more than just cameras. It enriches the operator's experience and



empowers them to capitalize on their expertise by providing the video and data needed to instantly gain a real-time understanding of the complete chain of events while an incident or emergency is occurring.

As part of a comprehensive integrated security solution which combines the power of Optera's SureVision 2.0 WDR and low light performance with advanced panomersive technology Pelco provides educational facilities with the ability to monitor and control access to all areas and observe absolutely everything that has occurred or is occurring on their site with no loss of detail in bright lights or shadows.

Security personnel, facilities managers, and school, college and university administrators are able to make fast and informed decisions on how to effectively respond to any incident which may include involving the police or other emergency services.

About Optera Multi-Sensor Panomersive Cameras

- Constant, seamless situational awareness
- Multiple immersive PTZ views at VMS
- Up to 12 Megapixel resolution for better detail at distance
- SureVision™ 2.0 for simultaneous WDR and Low Light performance
- Indoor and outdoor 180°, 270°, and 360° models available

About Evolution Fisheye Cameras

- Constant 360-degree surveillance, no blind spots
- Patented client-side 3D dewarping technology
- Compatible with many popular VMS platforms
- High resolution for superior detail, 12MP Exmor R sensor
- Indoor, indoor concealed, and outdoor models available

For more information, please visit: www.pelco.com 



Sussex Consolidates Campus Security Into One Rfid Solution

The University of Sussex has consolidated all of its disparate campus security systems into one RFID solution controlling door access across its entire campus.

Increased security awareness, ageing infrastructure and pressure to cut operating costs are just some of the many reasons why educational facilities choose to find new ways to enhance campus security. Add to this the fact that when it comes to crime, University students are consistently one of the most regularly targeted at-risk groups for theft, and this makes it a priority that campus security is up to the job when it comes to providing protection for both them and members of staff.

In Sussex's case the main driver behind the upgrade is the fact that the campus had a number of legacy systems consisting of mechanical keys, an out-dated magstripe system, tags and a hard-wired system with an expensive licence per door operation that was making security on campus both inefficient and uneconomic.

Time to upgrade technology

The University of Sussex is a leading higher education and research institution located in rolling parkland on the edge of Brighton, in the south of England. It was one of the first of the new wave of modern UK universities founded in the 1960s, receiving its Royal Charter in 1961, and is currently home to over 154,000 students of which over around a third are postgraduates.

Of these, just over 5,000 live within one of the eight on-campus residences or off-campus in University managed accommodation, so they can take advantage of the lively social and cultural activities available and has easy access to their residence at the end of the night.

Added to this will be a further new student accommodation building (being built by Balfour Beatty), which will provide the University with 2100 further bedrooms. Construction is expected to start in early 2017 with the first phase ready for the 2018/19 academic year.



With so much accommodation containing high-value electronic items such as laptops, mobile phones, TVs and stereos, not to mention classrooms and offices in the main campus buildings, it's important that the University not only provides modern, high security locking but also educates both students and staff to make them aware of how to keep themselves and their expensive possessions safe.

Challenges

Martin Chalker, Director of Estate Services at the University of Sussex, says "We have something in the order of 15-20,000 doors across campus here at Sussex and historically these have been secured and protected by a mix of mechanical and electronic systems of varying ages and sophistication. The biggest drawback to this has been that, being disparate systems, they use different technologies and have been unable to communicate with one another locally, let alone centrally. For example different departments across campus have been running different systems – with no central reporting or control –



and in this day and age it is neither efficient nor desirable to operate in this manner.

We needed to change this by stripping out all the different systems and moving to one solution with departmental operation – with security/estate services having full control of the entire campus – with delegated local control being granted to individual departments or buildings as needed or required. To achieve this we knew we had to upgrade our technology, but we still wanted something that was easy to set-up, control and manage.”

Choosing a system

Besides the usual facilities found at any University, at Sussex there are also a number of high security areas on campus protected by real time wireless access control including medical labs, nano technology departments etc.

Chalker continues “We wanted the same degree of protection campus wide as we had on these doors, so following a wide ranging review of options and looking at all the available technologies on the market we decided, as we were already using a number of SALTO XS4 handle sets, GEO cylinders and GEO Padlocks on site, to standardise on this solution across campus as SALTO are world leaders in educational access control and could provide us with all the functionality and technology options we wanted.”

“An effective and robust access control system is a key requirement of any site with multiple buildings to protect,” says Steve Rossiter, Key Accounts Manager SALTO

Systems. “Its objectives should be to control and restrict access to authorized personnel and areas, prevent and prohibit all likely security threats from occurring and aim to reduce the degree of vulnerability of critical assets to theft.

In an educational environment security, access control and campus management are key with other desirable features being simplicity of operation and the reduction of time needed to manage it, without the loss of any functionality, flexibility or control. The management of students, staff and visitors in all departments across campus was crucial for Sussex so this was the key application that SALTO had to deliver as well as providing a proven, future proof access control security solution that would provide 24/7 critical security protection. “

Installation benefits

Martin Chalker summarizes, “We are now well on track to complete our security consolidation programme and should shortly have a campus wide portfolio of ‘keyless’ buildings and a security system perfectly tailored to our specific needs.

A ‘buy once’ philosophy was a crucial part of our selection process to maximise the economic benefits moving forward as we had to be sure whatever technology we chose could grow with us to meet our future needs.

The SALTO solutions are a first class product that gives us a very strong platform and a reliable and highly secure access management solution. We have found it good value for money, with good technical support and someone is always available to speak to when we’ve needed help or advice.

Upgrading a multitude of different keys, tags and cards over to one streamlined system on such a large site is never going to be a simple process. But finding the right technology and making sure it can do all you need of it both now and in the future is really important. Get this right and everything else will follow.

The main thing to remember, however, is that the reason for doing so is not to upgrade technology for technology’s sake, but always to achieve a specific goal. In our case this has been to provide the degree of controllability that has been absent up until now and a safe and secure environment for both our students and staff.”

For more information, please visit:

www.saltosystems.com **SST**





Hillcrest Christian College Upgrades To SALTO

One of the greatest challenges for any education establishment is balancing the need to provide an open learning environment whilst ensuring the campus is safe and secure for both pupils and staff at all times.

Good security plays a vital part in this so to ensure theirs was up to the task Hillcrest Christian College an independent Christian school located in Reedy Creek, on Australia's Gold Coast, has replaced and upgraded their mechanical locking system with the latest electronic access control technology from SALTO Systems.

The school has approximately 1150 students enrolled each semester, both Australian and International, from Prep to Year 12. It is also a member of the CSA (Christian Schools Organization), which defines the school as a locally governed and not-for-profit organization.



Bret O'Neill from local SALTO dealer FRANKsecure says "We've been looking after security at the school for more than 25 years. When they mentioned upgrading from their old mechanical keying system we recommended SALTO as our experience with it over a number of years is that it is very reliable.

It provides the school with a standalone battery operated access control solution without having to hard wire. It also enables them to set up or restrict access at will and they can cancel fobs instantly due to loss or theft without having to re-key doors as with their old style locks.

We've now upgraded 40 doors on-site including administration entry doors, staff rooms, classrooms, gymnasium, theatre and the science lab with online and offline electronic escutcheons. We've also fitted specialist electronic panic bars to emergency exit doors at the school."

Ken Middleton, from the Hillcrest Christian College Maintenance Department, comments "What we've found useful with SALTO is that it enables us to integrate the time table program for teachers with room access to ensure only the room allocated can be accessed.

It was easy to install, not requiring expensive cabling to each door, which is much more cost effective. We like the fact that we can set a level of security as to who has access to the facilities and that it provides us with feedback on the status of each door for proactive maintenance purposes."

For more information, please visit: www.saltosystems.com **SST**



7th International exhibition of homeland security

Incorporating
GLOBAL SECURITY ASIA



Solutions, Technologies and
Innovations for Homeland Security
In Asia-Pacific



04 > 06
APRIL 2017
SANDS EXPO
SINGAPORE   

an event by
comexposium
Singapore

www.milipolasiapacific.com



Nanded Police Deter Crime With Smart Video Solutions From Axis



Solution enables remote monitoring and aids manual intelligence while improving operational efficiency

Mission

Nanded houses the second largest Gurudwara house of worship in India and attracts hundreds of pilgrims and tourists every day. Growing security concerns were quickly recognized by Nanded Waghala City Municipal Corporation (NWCMC) and the Nanded Police. They were looking for intelligent video surveillance solutions for the city to address a variety of concerns such as, early warnings to prevent disasters, efficient

monitoring for better governance, traffic management, crime prevention and control.

NWCMC appointed MIPL, a leading security consultancy organization from India, to assist in the designing and with supervising the project implementation.

Solution

The first phase of the project was focused on monitoring all critical areas of the city. This included the major entry and exit points, busy junctions and tourists' attraction spots. The idea was to convert the city surveillance project into a safe city

project to help the local authorities improve the overall operational efficiency and reduce manual intervention. With a coverage area of nearly 65 square kilometers, 45 kilometers of optical fiber network was setup to allow easy scalability. A total of 104 high resolution, night vision, fixed and PTZ Axis cameras were installed at all strategic locations spread across the city.

Result

The surveillance solution provided by Axis was deployed across the city of Nanded. It has helped authorities assist with on-field crime tracking directly from The Superintendent



of Police headquarters' this has enabled better governance and civic administration. The solution aids in the monitoring strategic places like the Sachkhand Gurudwara, and other religious landmarks which could pose as potential criminal/terrorist targets. The entire schema designed by MIPL ensured that the Axis cameras were used to route the connectivity for the PA systems as well as panic switches – leading to huge savings in cost.

“The Nanded Safe City project is one of the benchmark projects in urban security in India. It is a great example of discrete governance agencies collaborating effectively for common good. The technology used, including the video surveillance cameras is of very good quality. Nanded is proud to be one of the first cities in India to deploy a true safe city project.” – Sushil Khodwekar, IAS, Commissioner, Nanded Waghala City Municipal Corporation.

The solution included:

- Implementation of a fully integrated C4i software (from Nice, Israel) in the C-Cube (Command, Control & Communication) center, located at the Nanded Police headquarters, to monitor the entire city on 24x7 basis
- Public Address Systems
- Panic switches at CCTV covered chowks for emergency/distress intimations to the control room
- GPS based Vehicle Tracking System (VTS) on emergency vehicles including police vans, ambulances and fire tenders
- Ability to integrate with Flood level sensors, Dial 100, Police Beat System and e-Challans

The installed cameras included AXIS P1354 as well as AXIS Q6035-E Network Cameras. AXIS P1354 is a fixed day and night camera with superb image and excellent video

quality, and AXIS Q6035-E is a robust outdoor camera with HDTV 1080p, 20x optical zoom and high speed pan/tilt performance for coverage of wide areas and great detail when zooming in. Connected to a central video management system through the optical fiber network, each camera is loaded with intelligent video analytics to provide rule-based alerts to the control room.

Smart monitoring

With religious tourists visiting Nanded several times a year, the need for building a consolidated security establishment is reinforced. Due to the district witnessing a spike in criminal activities such as chain snatching and theft, manually managing and controlling traffic on arterial roads, during religious processions and ad-hoc calls for halla-bol posed a serious challenge to policemen and concerned authorities, in the past.

The Nanded Safe City project uses high-resolution night vision fixed and PTZ cameras to constantly monitor traffic flow. The cameras are connected to a central video management system located in the Nanded Police headquarters; operators monitor the system around the clock closely observing for suspicious objects and people triggering alarms to local authorities whenever required.

Deterrence of Crime

The solution has not only had impacted in helping resolve traffic cases. It has also helped to combat and resolve cases of violence in the city. Based on real time information, on-field police are given leads from the control room in identifying cases of chain and purse snatching. There was also a case of pranksters and miscreants on bikes being detained during the festival of Holi.



Better governance

Axis cameras across the city have become a dependable partner in the Nanded's safe city surveillance project by helping keep crowds and the city's historical landmarks safe. Traffic and parking patterns have improved with the control room's ability to make announcements through the central PA (Panic alarm) system, heavy vehicle's movement across the city can be watched to assess fines and illegal transport/transporters it has even made police move vigilant on their patrols knowing their movements and actions are being watched.

Overall, Nanded Waghala City Municipal Corporation (NWCMC) and Nanded Police have not only succeeded in securing the residents, but, also, in improving the city's civic situation and administration.

“The implementation has added immense value to the work of Police, both, in investigation and in traffic monitoring. The cameras are not only reliable, but also provide high-definition image quality making the surveillance easier. We're already proposing to expand the system.” – Paramjit Singh Dahiya, IPS, Superintendent of Police, Nanded.

For more information, please visit:
www.axis.com/sg/en/SST



Advantech – Successful Application

Introduction

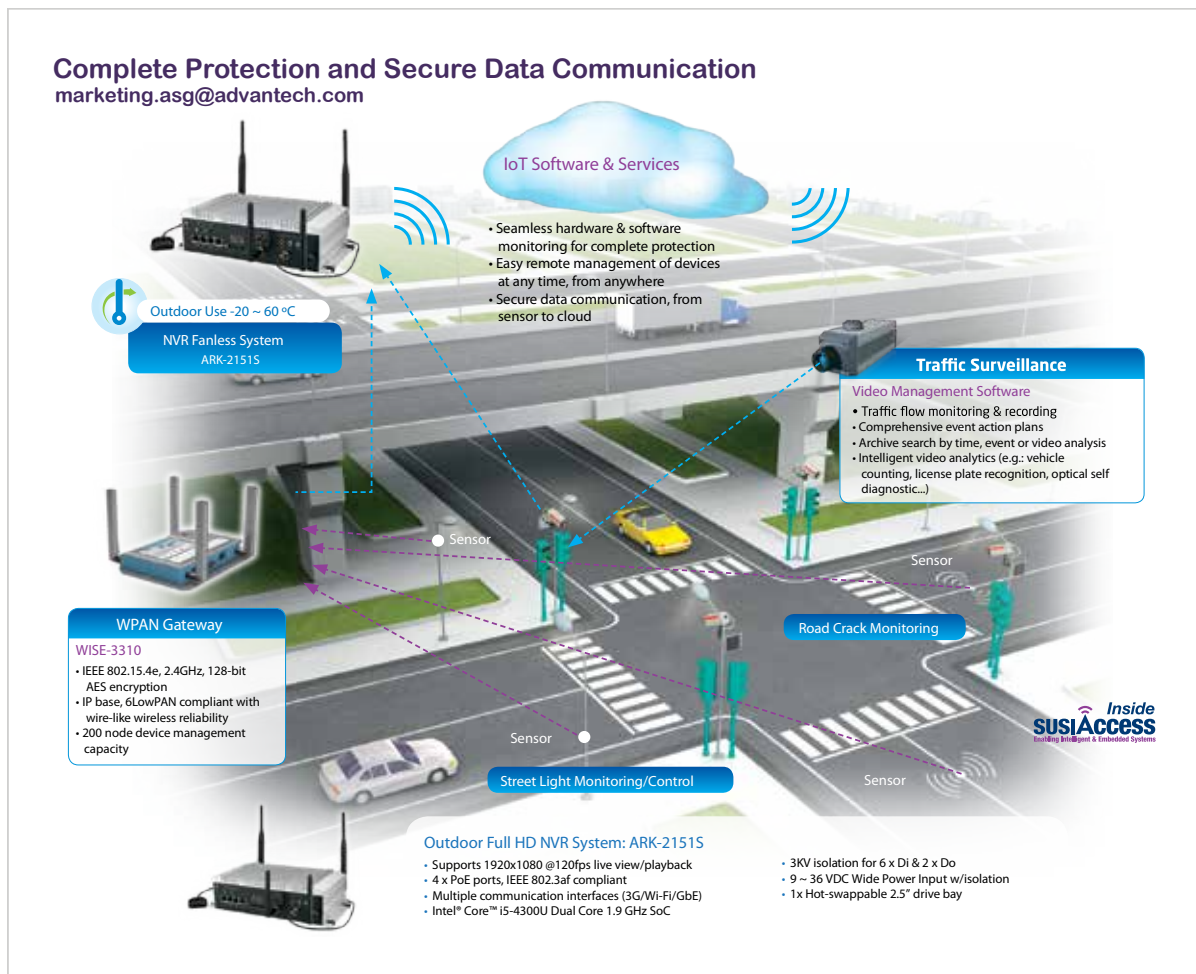
Public Bike Systems (or PBS, also called Bike Sharing, and Community Bike Programs) provide convenient rental bicycles intended for short urban trips. Offering fast, easy access, the bicycles may be rented at one station and returned to another. The Public Bike System provides convenient mobility, healthy exercise, and a reduction in popularity. The European company in charge of this particular PBS project was looking for an integrated



Public Bicycle Rental System

Complete Protection and Secure Data Communication

marketing.asg@advantech.com





solution with well-controlled management and maintenance costs.

Application Requirement

A public bike system typically includes a fleet of bicycles and parking stations, plus control kiosks with multiple interfaces, including control system, touch screen and security card reader for fast and easy access. IP cameras are also connected for surveillance. Data back up and management are handled through the control box. Naturally a high MTBF and rugged, wide-temperature design are requirements for these outdoor, 24-hour rental systems. Most important of all, a rental system scattered across broad areas of large cities required effective management.

Systems Solutions

For each station kiosk, Advantech provided a fanless, ARK-2121S system that offers an integrated solution for public rentals. ARK-2121S supports up to 1280 x 720 @ 60fps live/playback for real-time video capture, isolated COM/Digital IO ports to control bicycle locking systems, and USB3.0 high speed interface for local data backup. The system connects with an interactive monitor through HDMI & USB interface, and an identification recognition system with proximity card reader. Advantech's vital SUSIAccess software comes built-in in the ARK-2121S, and is used as a centralized management tool to manage remote site systems, with a distributed structure for separate

management. This saves much time and resources when it comes to managing and maintaining devices.

Benefits:

- Supports ultra-wide temperature range: -30 ~ 60 °C for outdoor environments
- Easy video backup through a hot-swappable drive bay
- Free SDK/API for camera health management and device control
- Rich I/O for system connectivity: COM / Digital IO / USB / HDMI / LAN ports
- 4 PoE ports provide for simplified camera installation and reduced downtime

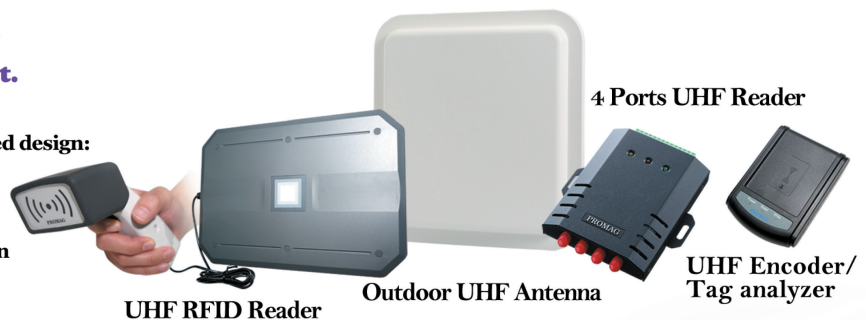
For more information, please visit: www.advantech.com **SST**



UHF New Series from 840 - 960 MHz

We help to simplify your UHF application in all environment.

- ✓ 0.5W/1W UHF read/write modules
- ✓ UHF antenna OEM/ODM customized design:
 - Patch Antenna
 - Array Antenna
 - Ceramics Antenna
 - Chip Antenna
 - Paper Antenna
- ✓ UHF project consultation and design
- ✓ SDK/API available



GIGA-TMS INC.
Quality, Delivery & Service
Tel: 886-2-26954214

8F No. 31 Lane 169, Kang Ning Street,
Hsi Chih Dist, New Taipei City Taiwan
http://www.gigatms.com.tw/
Email: promag@gigatms.com.tw
GIGA-TMS INC. © 2015 All Rights Reserved.



Milestone Video Software Gives Italian City Visual Advantages In Attracting Tourists



Challenge

San Lucido in Italy is dependent on tourism, and needed a way to keep the city safe and attractive for citizens and tourists. The first step was to use technology to heighten the security level in the city to deal with incidents, improve city cleanliness and avoid graffiti in public areas. San Lucido also wanted to become more environmentally friendly by finding a way to keep the city clean and tidy for the benefit of the tourists and for the convenience of the citizens.

They needed a solution that could grow with the city and help them utilize technology to become a Smart City – a city using a digital infrastructure to perform better services.

Solution

Milestone Partner GSA di Guido Luigi based in Polistena RC, installed Milestone XProtect Express to manage 36 Axis

cameras located in public areas in the city such as streets, parks and public buildings. The local police and security managers of public institutions can get an overview of all cameras with XProtect Smart Client, an easy-to-manage timeline that enables the police to examine incidents quickly and make informed decisions. The Milestone Mobile client for smartphones enables rapid response by the local police force as they can have full situational awareness even when patrolling.

Advantage

San Lucido has successfully entered the first phase of becoming a Smart City. Because of the high image quality, surveillance video can be used to identify perpetrators or graffiti painters. Abandoned waste can easily be detected to ensure the city stays an attractive tourist destination. Because of Milestone's open platform technology San Lucido can integrate with third-party software to become



even smarter in the future. The city is also able to expand the solution easily to cover more parts of the city.

Milestone helps San Lucido to be an attractive city to tourists and citizens

San Lucido is heavily dependent on tourism as a source of income for the local businesses. A high level of safety is a very important factor for being an attractive city to tourists and local citizens.

Another factor is the cleanliness of the city. Waste in the streets is a burden to the environment if it is not detected and disposed correctly and rapidly. The city also has to cover the cost of cleaning up and disposing the garbage left in the streets. With the Milestone video security system they are able to give the wrongdoers a fine in case of illegal dumping and make sure to remove the waste to ensure a clean city for the benefit of inhabitants and tourists.

The city's plan to become a Smart City is a part of a larger project initiated by the European Union with the goal of improving the quality of life and making cities more sustainable. The Smart City concept overall includes making better use of resources and ensure less pollution. It means smarter urban

transport, upgraded water supply and waste disposal, and more efficient ways to light and heat buildings. It also encompasses a more interactive and responsive city

administration and safer public spaces.

San Lucido has entered the first phase of their Smart City initiative. In this phase they want to heighten the security level at all public areas to ensure a safe city for inhabitants and tourists. The focus is primarily on avoiding misdoings, graffiti and other destruction of public property. The city also wanted to become more environmentally friendly by finding a way to deal with garbage dumping in the streets.

Milestone Mobile improves service quality

Milestone Partner GSA di Guido Luigi based in Polistena RC, installed Milestone XProtect Express to manage a mix of motorized speed dome cameras and fixed cameras from Axis. The 36 cameras are located in public areas in the city such as streets, parks and public buildings. The city police and security managers of the different public institutions have access to the video security system, to ensure that the relevant authorities have situational awareness of the city. San Lucido also uses Milestone Mobile allowing police and security managers to remotely monitor the public areas. That enables them to check up on different locations even when they are not near a computer. A police officer out patrolling in one area of the city will be able to check up on other parts through a smartphone enabling the local police to always be on top of the situation. Officers will be alerted if an alarm goes off by the alarm manager in XProtect Smart Client or by getting a push notification in the Milestone Mobile app. The images received by the officers





will be real time, giving them the possibility for rapid and more efficient response.

San Lucido city has recognized the value in investing in the future city and is already talking about rolling out next phase of the project:

“We have taken the first steps to become a city of the future with the help of Milestone’s video software. We are also considering integrating Milestone’s software with other technologies such as license plate recognition and video analytics to become a true Smart City,” says Fabio Frangella, Security Councilor, San Lucido City.

Easy to expand the solution

Because Milestone XProtect is built on an open platform technology, San Lucido can easily add other technologies to reach their goal of becoming a Smart City. Besides LPR

software and video analytics the city is also thinking about integrating Milestone XProtect with traffic classification software to clear traffic jams. They are also considering doing an integration that connects an audio IP speakers system with the tourist information panels located at the different sights to improve the experience of visiting the city for tourists. Because of the open platform technology everything is made possible.

A smart city uses digital technologies or information and communication technologies (ICT) to enhance quality and performance of urban services, to reduce costs and resource consumption, and to engage more effectively and actively with its citizens. The flexibility and future proof design of Milestone’s video software enables cities to reach these goals and become metropolitans of the future.

For more information, please visit:
www.milestonesys.com **SST**



IFSEC Southeast Asia

SECURITY • FIRE • SAFETY

PROVIDING GLOBAL INNOVATION AND EXPERTISE TO THE SOUTHEAST ASIAN SECURITY, FIRE AND SAFETY MARKETS

Ensure security excellence for your company at the leading exhibition for technology, solutions and knowledge

The global stage for security innovation and expertise

- ▶ Free education sessions provided for you to learn from the industry's best and brightest
- ▶ Find the right security solution provider for your business amongst the 350 exhibitors
- ▶ Get hands on experience with the latest gadgets in security technology
- ▶ You can save time by pre-booking meetings with your preferred suppliers

@IFSECSEA #IFSECSEA2016

IFSECSEA2016

07-09 Sept 2016

Kuala Lumpur
Convention Centre
Malaysia (KLCC)

07 - 08 Sep 16 | 10.00am - 05.30pm
09 Sep 2016 | 10.00am - 04.00pm

SECURE YOUR PLACE AND REGISTER NOW AT www.ifsecsea.com



Supported by:



Ministry of Home Affairs
Malaysia



Ministry of Urban Wellbeing,
Housing and
Local Government



CyberSecurity
MALAYSIA



Endorsed by:

REDUCING FALSE ALARMS IN PERIMETER INTRUSION DETECTION SYSTEMS



By George Redpath,
Sensurity Technical Director



Executive Summary

All Perimeter Intrusion Detection Systems are susceptible to false alarms and it is critical that all PID manufacturers continuously strive to lower these false alarm rates. Microwave PID Systems have a low false alarm rate in comparison to other systems, however to make microwave a suitable PID system for a wide range of sites (over water, very close to fences, areas of dense foliage etc.) it is imperative to continuously strive to reduce false alarm rates.

Microwave PIDS work by analysing changes in the received signal between a transmitter and a receiver. From a historical point of view they have suffered from an inability to discriminate between a human target and false alarm events from animals, weather and the movement of trees and foliage. False perimeter alarms create considerable additional effort and headache for operators to manage. Even a very low Nuisance Alarm Rate (NAR) has a severe effect on Perimeter security system performance.

This report provides an analysis of how to reduce false alarm rates in Microwave PID systems. The three attributes of a PID system (below) are investigated to analyse their potential to decrease the false alarm rates caused by the three sources mentioned above.

- Operating Frequency
- Antenna
- and Digital Signal Processing (DSP) of the data.

This report finds that by combining adjustments in the operating frequency, antenna design and DSP methods, a significant effect can be made on the false alarm rates currently facing microwave PIDS; making it an attractive choice for perimeter security application.

Problem Statement

Microwave PIDS are susceptible to reduction in performance and increased system costs due to false alarm rates. False alarms rates in any alarm system reduces the effectiveness of that system and creates additional costs for operators. Therefore reducing false alarm rates of a system whilst not compromising system performance, is a key factor for PIDS manufacturers. False alarms in microwave PIDS are generally caused by three different categories:

- Weather
- Foliage
- Animals

The way these three categories affect the system varies considerably and therefore the three categories must be dealt with separately in order to ensure a false alarm free system. Microwave systems operate on detection of motion.



An electronic field is generated between a transmitter and receiver unit as depicted in Figure 1. The electronic field is “disturbed” by motion within the field. If the disturbance is great enough an alarm is generated. The amount of disturbance an object generates in the field is dependant on a number of system attributes such as operating frequency, antenna design and the Digital Signal Processing (DSP) techniques used.



Figure 1: Microwave Electronic Field

Background & Solution

Three attributes of a microwave system affect how an object is “viewed” by the system;

- Operating frequency
- Design of the antenna
- Algorithms used to analyse the signal.

These three attributes are outlined in detail.

1. Operating Frequency

In bistatic radar systems the transmitter and receiver are at different locations. More particularly, in the case of the angle between transmitter and receiver being equal to 180°, the system may be described as a forward scatter radar.

The strength of the reflected signal from an object is dependent on the scattering properties of the object at the radar operating frequency, for example, its Radar Cross Section (RCS), which thereby determines how easily the radar system can ‘see’ an object. The transmitted signal is forward scattered away from the transmitter and towards the receiver for analysis.

Figure 2 below is a plot of how the normalized back scattered and forward scattered RCS of a metal sphere varies with the electrical size of the sphere (where the electrical size is the circumference of the sphere divided by the Radar wavelength). When the object size is smaller than the radar wavelength, Rayleigh scattering occurs and the object’s RCS is proportional to the system’s operating frequency to the power of 4.

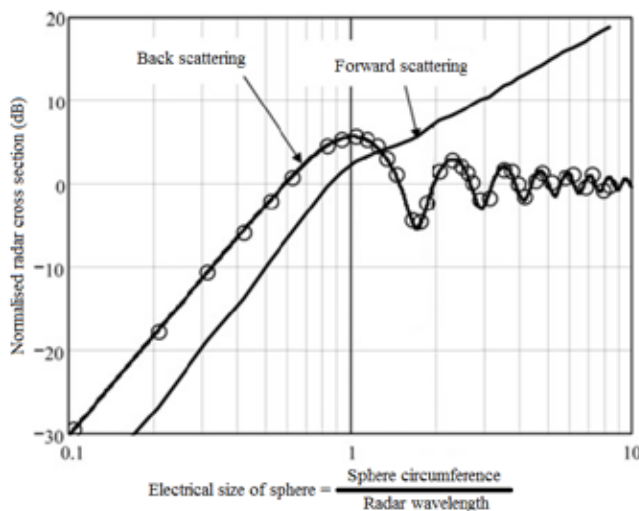


Figure 2: Variation in normalised radar cross section of a sphere relative to its electrical size [1]. For a fixed size object (ie fixed sphere circumference) as Radar Wavelength decreases (ie as frequency increases), the object’s radar cross section increases.

When the object size is larger than the radar wavelength, optical scattering occurs and the forward scattered RCS is proportional to the frequency squared.

Therefore in both cases (small object like a raindrop or large object like a rabbit), a higher operating frequency results in a higher RCS and therefore each object has more effect on the signal and is more difficult to ignore.

In forward scatter radar perimeter intrusion detection systems (PIDS) the traditional radar operating frequency used is 10.5 GHz or 24 GHz, i.e. a radar wavelength of 2.9 cm or 1.2 cm. These systems typically have high false alarm rates, especially during periods of heavy rainfall or due to the movement of foliage within, or small animals through the detection zone of the system. A sterile zone is typically implemented when using these systems to ensure that no foliage is present, and that no small animals enter the detection zone of the system.

For example a typical raindrop has a radius of approximately 0.05cm [2]. Therefore the signals forward scattered by rain will be Rayleigh scattered (as the raindrop is less than the wavelength of the system). The electrical size of each raindrop will be 0.25 at 24GHz and only 0.06 at 5.8 GHz. Therefore the RCS of a raindrop will be a staggering 25dB greater to a 24GHz system than a system which operates at 5.8GHz ($10 \cdot \log((24/5.8)^4)$).

Below follows a table that shows the extent to which an object is more visible to a radar system operating at 24 GHz than it is to a Sensurity system.

Object	Approx. Dimensions	Extent to which object is more visible at 24GHz than 5.8 GHz (dB)	Extent to which object is more visible at 24GHz than 5.8 GHz (absolute)
Grain of sand	Radius = 0.2mm	25dB	293 times
Raindrop	Radius = 0.5cm	25dB	293 times
Leaf	6 x 2 cm	12dB	17.12 times
Rabbit	50X20X20cm	12dB	17.12 times

Figure 3: Object RCS

Operating frequency conclusion

Operating at a frequency of 5.8 GHz greatly reduces the effect of weather, foliage and small animals on a microwave field due to their “visibility” being greatly reduced by the lower frequency.

2. Antenna Design

Microwave PID systems typically use a parabolic antenna which creates a narrow beam width of 3.5° in the horizontal and vertical planes, (as parabolic antennas are only capable of producing a symmetrical beam.) Using a Planar Antenna Array, in place of the traditional parabolic antenna allows different beam angles to be applied to the vertical and horizontal axis. An increase in the horizontal plane of an antenna allows an object to be viewed for a longer period of time and thus allows a more informed decision to be made (following the application of powerful DSP techniques) regarding whether the object is a person, vehicle or animal.

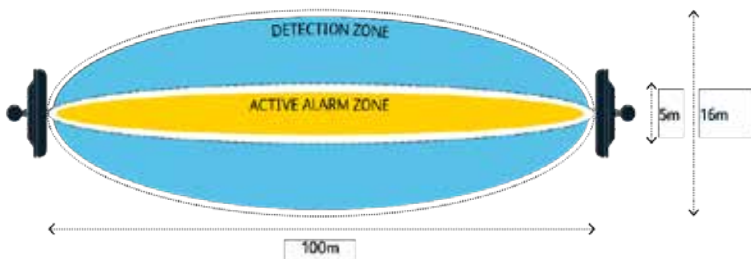


Figure 4: Detection Zone vs Active Alarm Zone

At 24 GHz the Fresnel zones of the bistatic radar link will be twice as tightly spaced, as at 5.8 GHz, since the Fresnel zone radius is inversely proportional to the square root of the radar operating frequency. This means that a given object size (for instance a person) will occupy more Fresnel zones simultaneously in a 24 GHz bistatic radar system and hence



less signature frequency information will be available for analysis as less changes in the signal will be observable as the object moves through Fresnel zones (Figure 5).

Antenna design conclusion

Thus antenna design combined with reducing the operating frequency, allows the system to make more informed intelligent decisions on what type of object created the disturbance in the electronic field of the system.

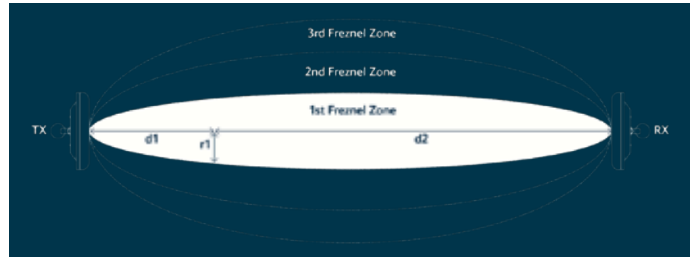


Figure 5: Microwave Fresnel Zones

3. Digital Signal Processing

As an intruder moves through the microwave link they forward scatter the microwave energy towards the receiver in slightly different ways depending upon various factors including their position. At some positions the reflected signal from the intruder will actually reinforce the direct signal, which propagates from the transmitter to the receiver, resulting in a signal increase at the receiver. At other points the reflected signal from the intruder will cancel the direct signal, resulting in a signal decrease at the receiver. At other points still, the intruder will actually block some portion of the direct signal from reaching the receiver and therefore cause a shadowing effect; again resulting in a signal decrease at the receiver.

The amplitude and frequency components of the signals change based on various factors which include the intruding object’s size (electrical size), position, speed, crossing point along the link and angle of movement (relative to the baseline of the microwave link).

Establishing what patterns (patterns of amplitudes and frequencies) are caused by which events (walking intrusion, crawling intrusion, foliage movement, small animals, parallel motion) is made more trivial due to the lower frequency (5.8GHz) and with the improved antenna design.

Below is a table summarising some of the main frequency components caused by various Perimeter Security events:

Event Type	Main Frequency Component(s)
Walking Intruder.	0-6 Hz
Crawling Intruder.	0-1 Hz
Running Intruder.	2-8 Hz
Person walking parallel nearby (1 m from baseline).	0.5 – 2 Hz
Foliage moving in the wind.	0-2 Hz
Dogs running perpendicular to the baseline.	1-3 Hz

Figure 6: Event Frequencies

Digital Signal Processing conclusion

Sensurity has carefully analysed these signals in the time-frequency domain and has uniquely developed intelligent algorithms which alarm on some events but not others; hereby drastically reducing the false alarm rates often associated with Microwave PID systems.

Conclusion

In this report we have identified the three categories which are responsible for the majority of false alarms detected in traditional microwave PID systems. This report has discussed alterations to three system attributes that when combined, greatly improve system performance and significantly decrease false alarms.

The outcome of this report is that a Microwave PID system operating at a frequency of 5.8GHz with a planar antenna and using advanced DSP techniques, provides a very attractive solution to reducing false alarm rates in perimeter security applications. For this reason microwave PIDS have the potential to be deployed in many more sites than previously thought suitable in the past; including port applications.

For more information, please visit: www.sensurity.com SST



FACING THE CORPORATE SECURITY



Security concepts have been around for as long as businesses have existed. In the past, security measures were relatively straightforward, using security guards or physical barriers such as fences. The main goal has always been the same: effective protection of people and assets to avoid specific risks and threat scenarios. Today, however, Corporate Security Officers (CSOs) face new and especially pressing challenges.

Globalization

As enterprises become multinational, their locations, divisions and branches span the globe, each with their own specific needs, including local security requirements or government regulations. At the same time, employees are increasingly mobile and often no longer tied to a fixed company location. This necessitates security standards that are aligned across an enterprise in order to meet local requirements as well as corporate governance policies that may need to be managed remotely.

Cybercrime and IT security

Data is one of the most valuable assets of a company – and in many cases, the most vulnerable. With a shift from physical to information-based assets and a growing trend toward online data storage, IT security is becoming increasingly complex. This has a clear impact on traditional enterprise security as many security violations pertaining to data, networks and IT infrastructure originate internally. Even the most powerful firewall cannot protect an enterprise from this type of insider threat or espionage. Security solutions need to precisely coordinate and correlate physical access with IT processes to bring together physical and electronic security.

Competitive pressure, image and compliance In today's competitive environment, companies rely more than ever on maintaining business continuity and managing their reputation with key stakeholders. Every security incident must be handled carefully to avoid damage to the corporate brand. Relevant incidents demand a quick response to maintain an adequate level of security. Prolonged downtime is unacceptable, and all unauthorized access to customer data or information must be avoided. In addition, all triggered events and measures need to be documented for reporting



▼
By Michael Bouché,
Head of Corporate
Security Portfolio,
**Siemens Building
Technologies**

and must be traceable for auditing purposes to comply with government, industry or local regulatory requirements.

The human factor

Since people still remain one of the major weak points that lead to potential risk, it is important to know the stakeholders and align processes and policies as part of risk management strategies. Only when employees at every level of the company see themselves as part of the security concept will it be possible to close security gaps that cannot be addressed solely with technology.

Technology must be suitable for day-to-day operations

For these reasons, security solutions are an essential part of a security culture, but they must be aligned with business processes and requirements. Technology must help employees comply with security standards in their day-to-day operations. Access management is one practical example of this. If the solutions deployed are not simple to use in everyday life, employees will find ways to circumvent the current standards and regulations. In addition, problems can arise when a variety of access solutions are deployed in various buildings or locations. Access cards or keys can easily get lost or stolen; if this goes



unnoticed for a long period of time, it opens up the enterprise to new risks. However, if the right technology in place is intuitive, modular and easy to operate, employees will automatically use it correctly as part of their normal routine.

Today's CSO needs to accommodate shifts in technology and ensure that investments are future-proof. A crucial factor is the right technology - it has to provide flexibility as the enterprise evolves and offer automation capabilities to support uses. Another aspect is the acceptance of the security controls that are in place. In other words, what matters isn't so much the technology itself, but how the users will utilize it.

Corporate security as a concept

In many companies, security solutions or disciplines are managed individually or siloed, which causes an increase in resources and costs. Siemens responds to these heterogeneous landscapes with a holistic approach to corporate security. One example of a holistic approach is the One Card concept for enterprise-wide access control: A single multifunctional employee ID card supports the needs of visitors, employees and contractors. The card serves as an electronic key to all entrances, doors and gates, and it can also be used for self-service options such as cashless payment in the cafeteria, or access to sensitive software applications or files. Employees readily accept technology when it gives them added value and allows them to be more independent within an enterprise. Such was the case at Vodafone in Germany.

Case study: corporate security at Vodafone

German mobile phone provider Vodafone, a subsidiary of the international Vodafone Group, implemented a comprehensive, integrated corporate security solution at its new headquarters in Düsseldorf. The challenge was to create a sustainable and highly integrated security infrastructure



there and in other European locations. Siemens met this challenge by deploying a security concept that combines both active and passive security systems.

One focus for this facility was a multi-site access management solution for more than ten thousand employees across Europe. Companies with a large workforce like Vodafone need to be able to efficiently manage access credentials, keys or access cards – a complex task especially when credentials are lost, exposing the company to security risks and expenses. For its new campus, Vodafone decided to deploy and operate an access control and lock system that uses a single end point with Near Field Communication (NFC) technology, with access authorizations stored on specially equipped mobile phones.

All functions run in real time, with a real-time server can handle 100,000 events per second compared to a conventional door control unit, which processes only 100 events per second. Above all, a real-time system provides up-to-date and reliable data at all times, allowing for quick intervention when necessary.

Focus on large companies

For the most part, the solutions described here are targeted toward large international companies with widely dispersed locations, as well as customers in a competitive market space who place a high strategic value on security issues. Siemens offers customized, integrated security solutions and services that support the complete framework from risk analysis, consulting and planning to implementation, maintenance and future upgrades. Companies profit from universal security standards that can be deployed throughout an enterprise, worldwide.

For more information, please visit: www.siemens.com **SST**



Fast-growing University Protected from Persistent, Malicious Attacks

Ensuring Network and Data Safety with Barracuda Networks



Summary

Universiti Malaysia Perlis Location: Perlis, Malaysia Enrollment: approx. 8,900

Challenges

- Protect against sophisticated attacks
- Ensure uninterrupted online access
- Support a multi-application environment
- Prevent loss of personal/sensitive data
- Scale easily
- Easy to install and manage

Solutions

- Barracuda Web Application Firewall
- Energize Updates

Results

- Protection from constant SQL injection and other malware attacks
- Network is always up and running
- Confidential data is safe
- Easy to manage and monitor web applications across the network



The Universiti of Malaysia Perlis is one of the country's fastest growing higher education institutions, increasing enrollment by about 7,500 percent in the past decade. This leading engineering university has multiple application servers, web services, and informational websites used by students and staff on more than 30 different campuses, as well as the general public.

According to Nasrudin Abd Shukor, Director of UniMAP's Information and Communication Technology Center (ICT), the university required a solution to "ensure network performance, scalability, uninterrupted, ubiquitous online access, and foremost, to protect the multi-application environment from any loss of confidential data." The university is subject to SQL injection attacks five to 10 times per hour.

The primary challenges he needed to address were:

- Blocking constant attacks, even the newest, most sophisticated threats
- Ensuring security of inbound, outbound, and peer-to-peer communications
- Preventing data loss
- Scaling to meet the needs of a growing university
- Finding a complete, affordable solution

UniMAP installed the Barracuda Spam & Virus Firewall in 2008, and Abd Shukor was impressed with how easy it was to install and manage, and how well it performed. In addition, he had found Barracuda Networks to be easy to work with, and highly committed to its customers. It was only natural, therefore, that he turned first to Barracuda in his search for a web application security solution.

“Barracuda Networks took the time to understand our needs, recommend technology that was perfectly suited to our requirements, and provide expert, helpful, and friendly support when required.”

- Nasrudin Abd Shukor, Director of UniMAP ICT Centre

About Barracuda Web Application Firewall

The Barracuda Web Application Firewall blocks an ever-expanding list of sophisticated web-based intrusions and attacks that target the applications hosted on web servers and the sensitive or confidential data to which they have access. Placed between the Internet and web servers, the Barracuda Web Application Firewall scans all inbound web traffic to block attacks and scans outbound traffic, providing highly effective data loss prevention.

Barracuda Web Application Firewall Fast Facts

- State-of-the-art security utilizing full reverse-proxy architecture
- Malware protection for collaborative web applications
- Built-in Data Loss Prevention (DLP)
- No per-user or per-server fees
- Also available as a virtual appliance





Enter the Barracuda Web Application Firewall 660

The ICT Center evaluation team determined the Barracuda Web Application Firewall would meet the demanding, long-term infrastructure requirements of the University. According to Abd Shukor, "Barracuda Networks took the time to understand our needs, recommend technology that was perfectly suited to our requirements, and provide expert, helpful, and friendly support when required." "We cannot afford to lose the constant battle against today's sophisticated application layer attacks on our data centers. The Barracuda Web Application Firewall was the obvious choice: Its reverse-proxy architecture offers a high level of security. More important, it is a single point of protection for all our inbound and outbound Internet traffic as well as peer-to-peer. It includes all the best practices for application security right out of the box," said Abd Shukor.

“The Barracuda Web Application Firewall was the obvious choice...It includes all the best practices for application security right out of the box.”

- Nasrudin Abd Shukor, Director of UniMAP ICT Centre

All web traffic passing through the firewalls uses HTTP and HTTPS protocols, providing secure, encrypted communication between university students and lecturers on one end, and web applications on the other. A dashboard provides instant visibility into attack statistics, system performance, traffic, resource usage, and other information helpful for troubleshooting and management.

"The Barracuda Web Application Firewall's intuitive, real-time interface enables our team to manage and monitor web applications across our network. It is easy to use, and the installation process is smooth and quick, with the Barracuda Web Application Firewall simply plugging in between data centers," said Abd Shukor. The experts at Barracuda Central work 24x7 to monitor and block the latest Internet threats. Data from more than 150,000 collection points is analyzed to create and deliver protection against previously unknown threats within minutes of their discovery via Energize Updates. As new types of threats emerge, the Barracuda Web Application Firewall will acquire new capabilities to block them.

Conclusion

IT administrators at Universiti of Malaysia found that Barracuda Networks was the right security and application delivery partner to protect it from sophisticated attacks, optimize its network, and keep IT resource needs low with its ease of installation and use. Barracuda Networks provided a complete, affordable, scalable solution that filled the application delivery and network security needs of this fast-growing university.

"Barracuda Networks took the time to understand our needs, recommend technology that was perfectly suited to our requirements, and provide expert, helpful, and friendly support when required," said Abd Shukor.

For more information, please visit: www.barracuda.com/products **SST**



Image by TBIT / pixabay.com



2016 Security China

The 13th Edition China International Exhibition on Public Safety and Security 2016

The Largest and Longest Running Trade Fair in China Public Security Industry, Set a New Standard

Date: October 25-28, 2016

Venue: New China International Exhibition Center, Beijing, China

Address: No.88, Yuxiang Road, Tianzhu Area, Shunyi District, Beijing, P.R. China

Featured Exhibitors in Security China Expo





Introduction to Radio Communication Technology

Wide area communications for protection of life and property for educational institutes in Singapore

The safety and protection of the staff and students remains a top priority amongst the educational institutes here in the Republic of Singapore.

Engineering design and installation process

The latest digital two-way radio communications products and the installation of these systems to compliment the assisting CCTV systems partners to provide and ensure the complete security solutions at each and every campus facility. All projects are managed by a group of trained communications and project engineers for the complete "we see you and talk to you" system. The best system design, software and hardware are offered to ensure compliance to the manufacturers specification.

Wide area security communications – Security Control

The emergency communications response teams are dedicated to provide safety and security to staff, students and property 24/7 by monitoring all critical locations at these educational facilities.

Quick communications are maintained with the Singapore

Police Force and Singapore Civil Defence Headquarters to serve and protect each and every location.

If you value piece of mind, this two-way radio communications and management system could be the most valuable product to be installed in the campus facility.

IDA approved equipment type for use in Singapore companies

These communication systems are being procured by a select number of reliable companies who are totally uninvolved in the two-way radio communication systems. These management teams represent more than 30 years experience in design, systems planning and total communications assistance. Custom-designed layouts to fit the requirements the company will provide engineering and installation services which will aid in the development of the best system to match their requirements. The systems are designed for personnel to provide the secure knowledge that only the people authorized to have access to the facilities can activate the emergency and evacuation response team at each and every location

The main objective of any two-way radio communication system is the rapid and accurate response to the abnormal events. Perimeter intrusion fire, major explosions, and on-site construction projects will make this communication system ideal for the total security solution.

Introduction of Martin Gillmon

Martin Gillmon is a dedicated communications consultant here in Singapore. Major communication management programs have been his primary activity, which ensures the rapid deployment of the security and safety personnel to any emergency situation throughout the secured property.

He offers a successful project management team to manage these projects to ensure the key factors constraints and limitation of materials, and financing.

He has helped to identify and evaluate hazards and risks related to any accident scenarios leading to fire explosion and intrusions and recommends measures to be incorporated into the design and operation of these critical communication systems within the Republic of Singapore for the past 26 years.

For more information, please email: gillmon@singnet.com.sg SST





Automatic Intelligent Alarm Dispatch for Safety, Security and Critical Alarm Notification

ZONITH Alarm Control System dispatches alarms from many different alarm sources to your digital radio, mobile phone, pager and/or email account.



You can control who handles the alarms through the watch schedule functionality - where on-call employees with competencies matching the needs of the alarm will be called. This makes for a safe and efficient workplace, because the right person gets the right notification at the right time.

Alarm Management

Zonith's Alarm Control System (ACS) ensures that alarm management and notification is automatic, efficient and reliable. It automatically dispatches safety and business critical alarms to DMR/TETRA radios, Android WiFi and DECT handsets, mobile phones, email and pagers, or a combination of these. The ACS dispatches notifications to the right person based on the time of day, criticality of alarm and matching competencies necessary to respond to the alarm. When an alarm is raised, ACS immediately identifies the available employee responsible and escalates the alarm until it is acknowledged, resolved and closed. With ACS, response times to alarms are reduced, the need to physically run to a notification panel is resolved and human error is reduced.





Centralised Lone Worker

The Centralised Lone Worker (CLW) application acts as a safeguard for lone workers' well-being. The application automatically sends periodic messages and monitors responses from digital radio and mobile phone users if they are working alone. If an employee fails to respond to an 'Alive Check' request within the allocated time frame an emergency alarm is automatically raised to the appropriate personnel. Response teams receive the CLW alarm directly on their mobile device/radio and can respond immediately.



Bluetooth Indoor Positioning

Zonith's Indoor Positioning System (IPS) allows organisations to locate and track employees and assets using any 'always discoverable' Bluetooth device, including DMR/TETRA radios, and radios equipped with a Bluetooth adapter. IPS provides real-time location data of radio and mobile phone users using strategically placed Bluetooth beacons. It can be used in conjunction with the ACS to trigger an alarm notification if a worker or asset enters or leaves certain predefined zones, or with CLW to provide location data of a worker in distress.

Man-Down Notification

The Man-Down Notifier (MDN) monitors workers to identify if they have suffered a fall or accident. It does so by monitoring the radio's accelerometer (motion sensor) for a lack of movement, a horizontal tilt, or both. False alarms are significantly reduced with its rich functionality, including recalibration, pre-alarm and configurable parameters. When triggered, MDN automatically dispatches a notification to the appropriate response group or individual.

Interactive Alarm Display

The ZONITH Interactive Alarm Display shows alarms and alarm status on large monitors and/or touch screens. The module connects to the Alarm Control System (ACS) via LAN, enabling screens to be mounted at multiple points around a facility for easy and visual representation of alarms.



Not only is the alarm type and status shown, but staff can interact with the touch screens allowing alarms to be accepted, closed and cancelled. The acknowledgement process can be setup according to customer needs, and all fonts and colors are configurable. It is possible to limit the selection of alarms combining several different filters which operate on the following properties: competencies, raise time, priority and alarm state. The alarm display screen was developed with ease-of-use in mind, resulting in very limited training required to operate the touch-screen display.

Typical Usage

- ▶ Production Plants
- ▶ Lone Worker Protection
- ▶ Office Panic Button Systems
- ▶ Emergency Services
- ▶ Building Management

Other Zonith Products

- ▶ **ZONITH Indoor Positioning Module**
Bluetooth based - locates people and assets
- ▶ **Remote Telemetry and Control Unit**
Remote control and monitoring of technical installations through your digital radio.

For more information, please visit: www.zonith.com

secutech

VIETNAM

Vietnam's Largest and Most Professional Exhibition
and Conference for Security, Fire & Safety

Vietnam No. 1 Your Profitable Choice and Flagship Show

21 – 24 September 2016

Friendship Cultural Palace, Hanoi, Vietnam

www.secutechvietnam.com

Global contact

Messe Frankfurt New Era Business Media Ltd. (Taiwan Branch)
Ms Echo Lin, Manager
Tel: +886-2-8729-1010
Fax: +886-2-2747-6617
Email: stvt@newera.messefrankfurt.com



messe frankfurt



Unique Secure





“Staff positions can be monitored both inside shops and outside on the streets, so security can quickly assist any staff member in distress situations.”

- Kasper Jarlkov, Managing Director of Unique Secure



The Organisation

Unique Secure is a security firm in Copenhagen, Denmark, servicing customers within the premium brand industry. Apart from security and theft control in premium shops, Unique Secure also offers logistics control, facility and building services and administrative services.

The Problem

Security staff found it difficult to communicate and handle daily tasks, whilst maintaining a high level of service and security to their premium customers. Furthermore, management wanted to ensure their personal safety if they faced a threatening or emergency situation.

The Solution

Unique Secure chose Hytera XIP radios combined with Zonith's alarm handling and task allocation software to handle work orders and dispatch alarms immediately to their radios if an alarm is raised. Each handheld radio can be located in an emergency via GPS when outdoors and via Bluetooth when indoors.

Key Benefits

To Unique Secure the key benefits implementing the solution was:

- Panic alarms are immediately dispatched to security radios,
- Guards can be located both indoors and outdoors,
- Guards can communicate easily via the small XIP radio,
- Task allocation and acceptance achievable through integration with Hytera radios Work Order interface.

Improve Communication and Staff Safety

To further enhance their service offerings to their customers, Unique Secure have recently taken the latest radio and software technologies into use, transitioning from delivering traditional security services to become a full service company.



“We selected the Hytera DMR radios as they meet our criteria for having a small but high power radio, which is needed as we work throughout the entire city of Copenhagen. Apart from the voice communication, the radios also support text messaging, Bluetooth and GPS, which makes it perfect for combining with Zonith’s alarm and task handling solution.”

- Kasper Jarlkov, Managing Director of Unique Secure





Alarm Handling & Task Allocation

Due to tough competition in the market, Unique Secure chose to new technology to set themselves apart from the others. Zonith's Alarm Control System can:

- Dispatch personal panic alarms from and to handheld radios,
- Dispatch lone worker alarms if an 'alive check' message is not answered,
- Handle alarms from building management systems and CCTV,

- Integrate with Hytera's work orders, allowing tasks to be raised and forgotten about, as they can be accepted from the guard radios, and escalated to the next employee if rejected.

Indoor/Outdoor Positioning

Apart from having instant access to alarms and work orders, Unique Secure now have a much better system to protect the staff themselves. The radios are tracked using Zonith's Real Time Location System called RTLS, which will use the radios Bluetooth when the guards are inside the shops, and GPS when the guards are outdoors. To monitor the location of Bluetooth units inside the shop the RTLS uses small Bluetooth beacons. If an alarm is raised, all other staff members will receive instant information about the alarm and also the exact location of the staff in distress.

Pocketsize Handheld Radio

Unique Secure had to decide which radio to choose to handle voice, alarming and positioning, but also fit into a suit pocket. Traditional radios were too bulky for this, but they found the solution in the small but powerful Hytera X1P digital radio, which can do it all.



For more information, please visit:
www.uniquesecure.com SST



By Stefan Widing,
**HID Global President
and CEO**

HID Global's broad industry perspective has positioned the company to pinpoint five key developments that it believes will have the greatest impact during this year on identity and access management, citizen identification and the IoT.

"We're watching several developing trends in the New Year, including growing demand for a more mobile-centric and satisfying user experience that HID Global believes will be the primary driver for security technology innovation in 2016," said Stefan Widing, HID Global President and CEO. "Customers will increasingly aspire to a comprehensive secure identity experience for their users that can provide the foundation for more flexible, adaptable solutions in a new era of interconnected digital identities and

News Highlights:

- Mobility and a growing focus on the user experience will be a strong focus for organizations in 2016.
- Trusted digital identities will proliferate across increasingly connected environments for greater convenience, fueling opportunities to enhance productivity and drive compliance to security policies.
- Privacy protection will continue to grow in importance, forcing organizations to improve best practices for preventing breaches and safeguarding identities, even after they're stolen.

the Internet of Things."

HID Global's 2016 trends point to a more mobile and connected experience, ongoing advancements in privacy protection and broader adoption of best practices for solution deployment. The trends include:

Trend #1: "Mobilizing" security will make it more pervasive and personalized: A new, more secure identity lifestyle will be built around the convenience of ever-present mobile devices. Computer and network logon, driver licenses and other applications will more seamlessly join physical security functions on phones, tablets and laptops. Wearables will be the next step, and phones will also work with RFID tags to add security and trust to the IoT for proof-of-presence applications.

Trend #2: Security will move to a much greater focus on the user experience: This will help close the gap between planning and compliance, while ensuring that security adapts to rather than defines end-user habits and lifestyles. Old ways of authenticating will be replaced by more satisfying alternatives.

Trend #3: Secure, connected identities will fuel safety and innovation in how we work, shop and play: The industry will enter its next new chapter of connected identities, employing multi-layered

security strategies that also include biometrics in order to bind these identities to their legitimate owners.

Trend #4: There will be more attention on privacy in an increasingly connected and mobile-first world: Identity will expand beyond people and their personal identity to the identity of objects and their authenticity, accentuating the need to protect personal information across increasingly interconnected devices, services and applications.

Trend #5: Security policies and best practices will become as important as technology advances: The industry will sharpen its focus on not only what to deploy, but how – from the first U.S. digital driver licenses to unified credential management systems that enable organizations to more holistically address both facility and information security. Rather than focus exclusively on preventing breaches, the industry will also adopt best practices for controlling what happens afterwards, so stolen identities are useless to thieves.

HID Global's Seos[®] technology provides the foundation for advancing these trends, making it possible for organizations to confidently incorporate mobile solutions and empower their users with more application than ever before.

For more information, visit www.hidglobal.com **SSR**



INSIDE LOOK | ZOMBIE BYTE SYMPTOMS, REANIMATION & CURE

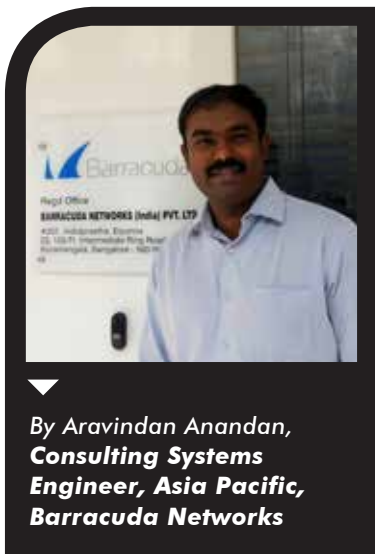
ZOMBIE BYTE

SYMPTOMS, REANIMATION & CURE





Enterprises must protect against invisible threats that patiently wait to attack. Once infected, this forgotten data can ‘eat’ efficiency and create vulnerabilities.



By Aravindan Anandan,
**Consulting Systems
Engineer, Asia Pacific,
Barracuda Networks**

In 2013, a horde of five million zombie computers launched a cyber-attack in 80 countries globally.¹ Over 18 months, the botnet nicknamed ‘Citadel’ invaded home computers, recorded keystrokes, captured login passwords and stole financial information. None was spared from the onslaught of this digital invasion, and as a result, more than half a billion US dollars was stolen from banks – American Express, Bank of America, PayPal, HSBC, Royal Bank of Canada and Wells Fargo.

So how did these computers become zombies, allowing hackers to remotely access and steal information?

During the investigation, it was found that the computers contained zombie data, making the system vulnerable to malware attacks from outside. Much like the Greek Trojan Horse, zombie data is a subterfuge providing undetected entry points for malware that compromise systems from within, turning computers into zombie computers. The accumulation of these infected computers triggered a botnet or DDoS attack where multiple compromised private computers targeted a single system, resulting in a Denial of Service (DoS) attack.

Symptoms and causes of a Zombie Byte Usually via an office computer connected to a server, the user is unaware that their own system retains zombie data, which act as entry points for a hack or virus. These viruses ‘zombify’ the computer system, allowing the hacker to steal passwords and take screen shots of information under isolated direction.

In today’s Unix operating system, zombie data are commonly made up of ‘child’ programs. Started and abandoned by ‘parent’ programs, these zombie data armies or ‘botnets’ can wipe out an overwhelming amount of data (a corporate website for example) off the internet in a single stroke. However, like all viruses, there needs to be an enormous collection of data that lack purpose and are left unchecked in order for these attacks to work. In a business setting, this vulnerability exists as PST files – data of former employees that are retained, backed-up and maintained on corporate networks in routine IT back-ups over long periods of time and then forgotten, even though there is no data value in maintaining the files.



28 Days Later: Deadly Zombie Computers

The Hacker News (It) reported in September 2015 that over 90 per cent of a network of compromised LINUX servers can wipe massive amounts of data and knock large websites off the Internet So how does zombie data reanimate and multiply?

Distributed denial-of-service network or XOR DDoS Botnets are in Asia. There is a growing trend where these attacks are primarily infecting LINUX systems, which is the system that the UNIX's DNA is based off.

In a corporate setting, employees use PST files as a convenient filing system in Outlook during their tenure, and back PST files on hard drives daily. When the employee leaves, the IT Department, during the handover process, duplicates both the daily back up and the latest packaged version when the employee leaves. For continuity, new employees may be given replicas of former employee's

emails – thereby creating at least four copies of each PST file.

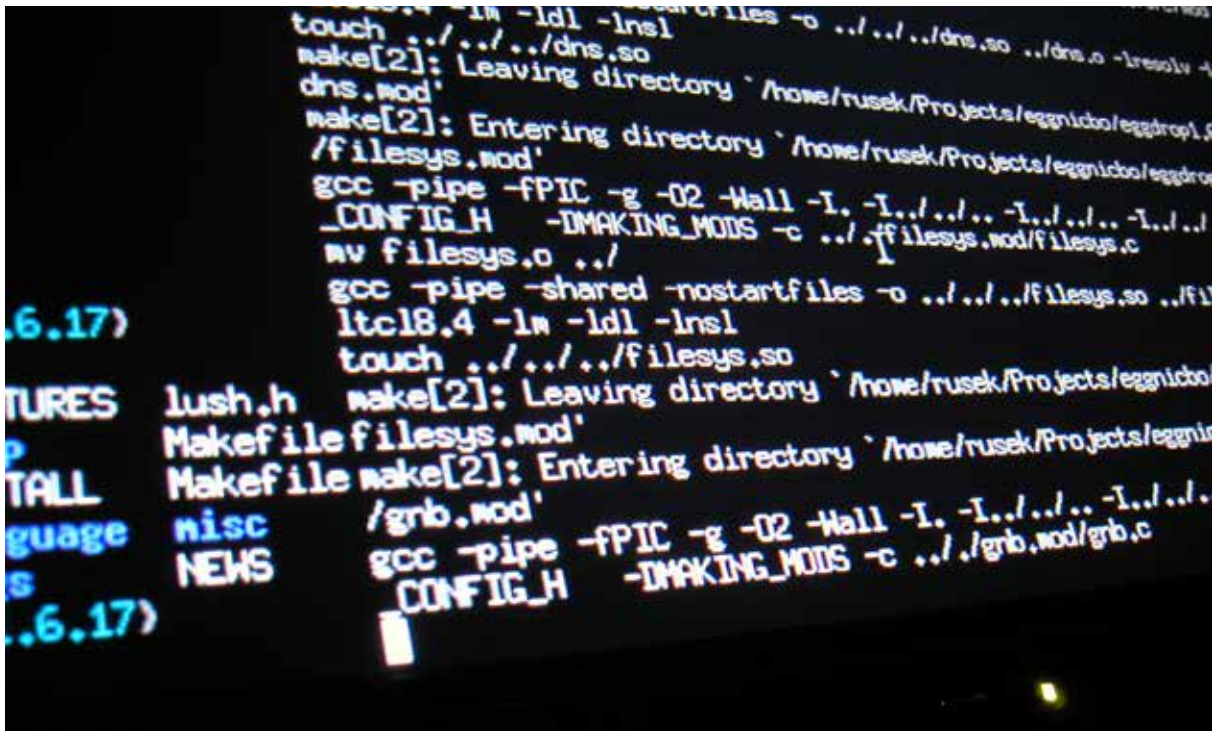
Infested with irrelevant data, the new zombie computer continues to store PST files on the corporate networks. Prone to corruption, the zombie computers and PST files can be used by hackers to breach security and carry out malicious attacks. In a corporate world where data is the lifeblood, this can constitute a fatal threat.

Economic Impacts of A 'Zombie Attack' A 2014 study conducted by the Ponemon Institute found that the average cost of a data breach in 2014 exceeded US\$5.85 million.² That same year, Gartner analysts predicted a worldwide spending on information security reaching US\$71.1 billion with the data loss prevention segment recording the fastest growth at 18.9 percent and security spending growing a further 8.2 percent in 2015 to US\$76.9 billion.³ The increasing frequency and complexity of cyber-attacks makes security the

highest ranking IT concern for Chief Information Officers; with more than half (51%) of CIOs surveyed voting security planning as the last item to receive budget cuts in 2015.⁴

The study also showed that as many as 90 percent of malware-infected computers in Singapore are located in the Central Business District (CBD), making the city a target for hackers interested in getting hold of valuable financial information.⁵ Additionally, studies have shown that an advanced hacker phishes out data for an average 229 days before being detected.⁶

While these statistics do not singularly identify the direct impacts of a zombie attack, they paint a grim picture should zombie data be allowed to breed in one's IT infrastructure. Undeniably, the extent of a botnet threat is severe as they are constantly evolving to outwit security defenses; representing a fundamental threat to the operational capabilities and economic stability of an organization.





A Simple Cure

The solution luckily is rather straightforward and it starts with the organization acknowledging the existence of such data in their network and deploying the required tools to intuitively find and eliminate it. Tackling the first issue of storage, PST files can be reduced to redundancy with a modern cloud-based archiving solution. A cloud-based solution is also easily managed, allowing tracking commands to be customized and activated upon request. Effective cloud-based solutions tackle these zombie files by deploying sequences to accurately classify the owners of orphaned or zombie PST files and allow the IT team to migrate, manage and eliminate them. Often, the data becomes too tedious and too large to comb through but with management solutions such as PST Enterprise, the files are probed on

a broad, automated basis and provide the mandatory details, allowing for retention decisions to be made.

On the second issue of zero awareness of zombie data in the system, PST Enterprise solutions review servers and file shares for PST files in real time. This way, abandoned PST files can automatically be surfaced and suitable action can be taken, putting control back in the hands of IT managers.

Like in any good horror film, a full on zombie invasion can be devastating and crippling. Thankfully in real life, effective solutions like PST Enterprise that intuitively screen and eliminate botnets integrated deep into IT treatment programs, make it possible keep these life-sucking computers at bay. **SST**

¹ <http://www.bbc.com/news/technology-22795074>

² <http://www.ponemon.org/blog/ponemon-institute-releases-2014-cost-of-data-breach-global-analysis>

³ <http://www.securityweek.com/global-cybersecurity-spending-reach-769-billion-2015-gartner>

⁴ <http://www.prnewswire.com/news-releases/top-three-it-workplace-issues-prevent-cios-from-sleeping-easy-in-2015-300026276.html>

⁵ <http://www.channelnewsasia.com/news/singapore/up-to-90-of-malware/1781510.html>

⁶ <http://digital.asiaone.com/digital/news/asia-pacific-countries-most-vulnerable-advanced-cyber-attacks>



Dahua Introduces Smart Thermal Network Camera Series

Dahua Technology, a world-leading manufacturer of video surveillance products headquartered in Hangzhou, China, introduces the smart thermal camera series to provide superior image quality and advanced features for perimeter, electric industry, manufacture security applications. The camera series is designed to find heat sources, able to offer highly detailed images and an extensive feature set.

Dahua new smart thermal network camera family includes thermal hybrid PTZ camera, hybrid speed dome camera, thermal bullet camera and thermal dome camera, all equipped with a variety of smart functions. The smart thermal cameras adopted top-notch sensor that is capable of detecting tiny differences in temperature. Those camera series can achieve higher detection accuracy and it is able to function in complete darkness and adverse weather conditions. Furthermore, the cameras combined intelligence, efficiency and high performance such as smart detection, smart analyze, smart perception, smart tracking and smart control.

The smart thermal network cameras can precisely determine the object temperature and the temperature distribution even on small and fast moving objects. Those cameras are excellent for detecting water leak behind a wall, a person hidden in the bushes at night, or identify passengers with a fever passing through a checkpoint.

Dahua thermal hybrid network PTZ camera is a professional combination of a visual camera with integrated max 40x optical zoom lens and a thermal camera, perfectly synchronized in pan and tilt movements. The network camera can capture images in full scale without the need to step back or frame the shot. The thermal camera is for whether night-vision missions or precise thermographic surveys.



Network camera & thermal camera side by side



40x optical zoom lens



IVS and auto-tracking



Hot resource detects & alarm



The special lens focuses the infrared light emitted by all of the objects in view. It can deliver several independent H.264 streams for different quality needs and bandwidth constraints simultaneously.

Dahua also provides software and accessories include smart PSS, NVR and DMSS to work together to meet the individual requirements of transportation industry, energy industry, border and coastal surveillance, etc and other special applications.

Dahua smart thermal network camera family

Thermal Hybrid PTZ Camera PT8320/8620

- Thermal resolution:640*512 or 336*256
- Lens optional:35/60/100mm
- Visible camera support 40X optical zoom
- Support IVS
- IP66-rated

Thermal Hybrid Dome Camera SD8320/8620

- Thermal resolution:640*512 or 336*256
- Lens optional:25/35/50mm
- Visible camera support 30X optical zoom
- Support IVS
- IP66-rated

Thermal Bullet Camera BF5300/5600

- Thermal resolution:640*512 or 336*256
- Lens optional:7/13/19/35mm
- Tri-mode output:IP/HDCVI/Analog
- Support IVS
- IP67-rated

Thermal Dome Camera SD5300/SD5600

- Thermal resolution:640*512 or 336*256
- Lens optional:13/19mm
- Tri-mode output:IP/HDCVI/Analog
- Support IVS
- IP66-rated

More recommend smart thermal network camera modes and solutions will be displayed at Intersec 2016. Welcome to visit Dahua booth SA-E26.

For more information, please visit:
www.dahuasecurity.com SST



Thermal Hybrid PTZ Camera PT8320/8620



Thermal Hybrid Dome Camera SD8320/8620



Thermal Bullet Camera BF5300/5600



Thermal Dome Camera SD5300/SD5600



2&3 Alarm Cablelok



Checkpoint 2&3 Alarm CableLok is specifically designed to help lose less and sell more. CableLoks protect a wide range of high-theft hard and soft goods merchandise. CableLoks are reusable and completely portable, permitting open merchandising and free movement in the store which, in turn, minimizes sales assistance.

Key Features:

- 7x7 strand aircraft grade coaxial cable
- 95 dBA alarm
- Flashing LED light
- Isolated sound chamber
- Easy to apply and remove
- Tough, secure and reusable
- Battery powered RFID chip provides a stronger transmission and helps prevent body shadowing

For more information, please visit: www.CheckpointSystems.com or email: apac.marketing@checkpt.com 



MicroEngine[®]
Integrated Security Systems

MicroEngine's Encrypted IP Desfire Controller – XP-GLS300

GLS 300 is a multifunctional single door controller that supports the latest Mifare contactless technologies – Mifare DesFire EV1. Through the implementation of Mifare DesFire, GLS300 offers the highest security measure in access control system such as the data communication from start to finish is encrypted using the very secure algorithms of Triple Des (3DES), 3KDES & AES.

GLS300 provides the highest security control in access control system as it supports the RFID chips with UID up to 64 bits or 20 digits card number length. Hence, it can countermeasure the security risk relating to duplicate card ID. Also, it is equipped with LAN connectivity at 10/100 Base-T using TCP/IP protocol. The messaging between the GLS300 and software is encrypted with dynamic key using AES128 industrial strength algorithm.

GLS300 has built for high-end integrated security applications by using the 32 bit RISC processor at 80 MHz for industrial application. It enables the system to process complex applications such as modern security encryption features in real time manner.

Furthermore, it supports door access control, car park access control and lift access control. Users can configure the capacity of the system by adding extension boards.

Our GLS300 Desfire controller supports our in-house PLATO Desfire readers on RS485 connection which offer user the option of multiple mode of reader only, reader + keypad + color LCD operations. Thus, the door can be configured to operate on different entry access mode at any time. It has 4 supervised inputs, 1 for exit button, 1 for door sensor. The other 2 are for general purpose Inputs which can be used as Alarm sensor input. It also has built in DEDICATED Tamper Switch Input and Fire Alarm Input for higher standard requirement. GLS300 can store up to 100,000 card user database and 50,000 transaction records.

For more information, please visit: www.microengine.net **SST**





Advantech's Smart Traffic Monitor – ARK-1251S

Intelligent Highways

In the past, it was complicated to manage all the devices which were set up for real-time transportation monitoring; most devices came from different vendors and each has its own specific protocol. Once a problem occurred, the system integrator had to take a lot of time to identify where problems were coming from, and then solve them step by step. Advantech Intelligent highway management solutions are integrated total solutions that simplify application implementation.

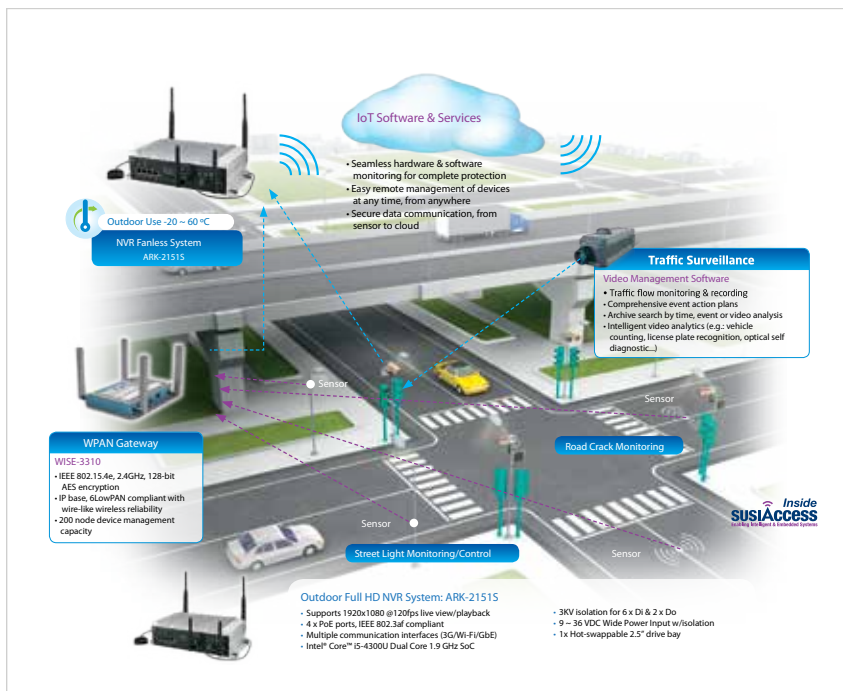
Real-time Traffic Flow Monitoring

ARK-2151S intelligent traffic management system can connect with mainstream Full-HD IP cameras to provide video analysis technologies. ARK-2151S can monitor and calculate traffic flow in real-time and pass the information to the traffic control center through its multi-communication capability (wire or wireless). With integrated, intelligent video analytics software, the system can relieve traffic jams by traffic flow leveling. And the video record can be searched using data-time/event terms.

Complete Protection and Secure Data Communication

ARK-2151S can be connected with several sensors, such as surface crack sensors, light sensors, etc. With a surface crack sensor connected, the ARK-2151S can gather road surface health monitoring data 24/7, allowing the traffic control center to plan prevention in advance. With a connected light sensor, ARK-2151S can efficiently control road lighting depending on ambient luminance, providing safer driving and more efficient energy use. ARK-2151S has built-in IoT software services: SUSIAccess provides seamless hardware & software monitoring for complete protection and secure data communication, preserving a reliable record, yet reducing bandwidth.

For more information, please email: marketing.asg@advantech.com. SST





Fiber Optics for Security: Don't be afraid to add fiber to your diet...

If you think fiber optic cable and its installation are too expensive, you may be missing out.

While fiber offers a myriad of benefits over copper in Ethernet applications, many integration companies haven't invested in the technology and manpower to deliver the installations.

Prices have come down significantly for both single and multi-mode fiber. Cable termination has become very simple thanks to automated termination, eliminating the need to precisely cut and polish the ends.



Here are a few good reasons to look at fiber for your next IP application:

- Transmit Gigabit Ethernet longer distances than copper
- Direct hit lightning strike damage is limited to edge devices
- Not susceptible to EMI or ground loops
- Future proof your network! Think 5 years down the line, you may be needing 10Gig, and copper will be very limited with how far you can go

Common misconceptions about utilizing fiber optic cable:

- Multi-Mode (MM) fiber and the products that connect to them are less expensive than Single-Mode (SM). This was very true for analog products, but in today's SFP based world, (want to learn about SFPs [click here](#)) that is simply not true. A SM SFP is the same cost as a MM SFP for most applications.
- The fiber that is already run is MM, so I need to stay with MM if I am laying new fiber. This is false. SFPs allow seamless use of mixed cable types. It is perfectly acceptable to have both SM and MM and Copper all coming and going from the same switch.

Why should you consider Single-Mode fiber if you are installing new cable?

- virtually same cost as MM cable
- longer distances for Gig and 10Gig applications. Gig over MM can be as short as 220m!

Don't be afraid to make the transition. The applications and market for fiber will continue to grow as IP devices steadily replace analog. Distances from edge devices will frequently be longer than the 90 meter limitation of copper without using special adapters. Learning about and embracing fiber will benefit you and your customers in the long run.

ComNet designs, builds and delivers communication solutions for Infrastructure, security and data networks designed to withstand the rigors of harsh and difficult industrial applications. For project and design assistance please get in touch.

For more information, please email: sales-asia@comnet.net *SSP*



Model: Next Generation Sarix Professional

By: Pelco by Schneider Electric

① www.pelco.com

- Up to 5 MP resolution
- Actionable colour video in low light
- Detailed adaptive IR
- ONVIF Profile S and Profile G conformant
- Wide selection of form factors and mounts
- Local storage capability with SD card slot
- Industrial design with -40 to 75 degree celsius operating temperature



Model: Thermal Hybrid PTZ Camera PT8320/8620

By: Dahua Technology Co., Ltd.

① www.dahuasecurity.com

- Thermal resolution: 640*512 or 336*256
- Lens optional: 35/60/100mm
- Visible camera support 40X optical zoom
- Support IVS
- IP66-rated





Model: Thermal Dome Camera SD5300/SD5600

By: Dahua Technology Co., Ltd.

① www.dahuasecurity.com

- Thermal resolution: 640*512 or 336*256
- Lens optional: 13/19mm
- Tri-mode output: IP/HDCVI/Analog
- Support IVS
- IP66-rated



Model: Thermal Hybrid Dome Camera SD8320/8620

By: Dahua Technology Co., Ltd.

① www.dahuasecurity.com

- Thermal resolution: 640*512 or 336*256
- Lens optional: 25/35/50mm
- Visible camera support 30X optical zoom
- Support IVS
- IP66-rated



Model: FLEXIDOME IP Panoramic 7000 IC

By: Bosch Security Systems

① www.boschsecuritysystems.asia

- 12MP / 30 fps sensor to provide a full panoramic overview with fine details
- Edge or client-side dewarping for easy integration
- Intelligent Video Analysis (IVA) at the edge for reliable detection, track and minimize false alarm.
- Regions of interest and E-PTZ for easy video management
- Discreet and aesthetic, in-ceiling design
- Easily painted cover plate for unobtrusive installation
- Available in a 360-degree model, as well as a 180-degree model





Model: HID Global Mobile Access

By: HID Global

www.hidglobal.com



- **Dynamic:** HID Mobile Access is powered by Seos, which also supports use of any smart device (including wearables (watches, wristbands, etc) and bank cards, in addition to smartphones, tablets, and traditional smart cards and keyfobs) in a unified access control system; it can support future applications beyond access control (PC login, biometrics and more); and it enables security to be dynamically updated in the future so customers can employ the right mix of form factors, use cases, and security as their needs continue to evolve. It also makes true convergence of applications possible with its ability to support multiple identity credentials on a single smartphone or other device (for unified credential management).
- **Convenient:** Readers can be configured to activate with a close proximity “tap” of a smartphone, and the support of Bluetooth Smart coupled with HID Global’s patented “Twist and Go” gesture-based technology enables the use of smartphones with readers from a distance (up to 10 meters) for on range access to doors, parking gates, and other applications -- all while providing an additional authentication layer. For added convenience, the HID Mobile Access App also can run in the background, eliminating the need to activate the App before each use.
- **Easy-to-use, industry-leading portal:** The solution manages the seamless and secure over-the-air provisioning, issuing and revoking encrypted digital credentials on smartphones. The HID Secure Identity Services portal for the HID Mobile Access solution makes it possible for administrators to simply send end-users invitations to download the app directly from the portal to prepare the phone. Once the invitation is accepted and activated, provisioning or revocation of digital credentials can be managed over the air.
- **Increased security and privacy: Seos secures all identity provisioning and authentication transactions**
Independent frequency of the communications layer between reader (or other access point) and smartphone to protect against sniffing and replay. Additionally, the encrypted credential can only be decrypted by the reader or other access point so each transaction is unique to ensure privacy.





Model: XP-GLS300

By: MicroEngine Technology Pte Ltd

① www.microengine.net

- DesFire Encryption Support.
- Support Card ID in 64-bit or 20 digits card number length.
- GLS300 can store up to 100,000 card user database and 50,000 transaction records.
- The card ID is created using advanced and encryption algorithm built in to the Mifare DesFire card.
- Encrypted messaging between controller and the computer with dynamic keys using the AES128 industrial strength algorithm.
- It has been built in high-end integrated security application by using 32-bit RISC processor at 80 MHz.
- It can supports door, car park and lift access control.
- Support live remove firmware update for the application software via the IP interface.



Model: BQT BioX and BioXK

By: BQT Solutions (SEA) Pte Ltd

① www.bqtsolutions.com

Distributed IP Access Control:

- User Management
- Access Control
- Door Management

Advanced Access Control:

- Zone Management
- Device Management
- Template Management

Time and Attendance Features

- Monitor Attendance
- Hours Worked Calculation
- Holiday, Leave & Shift





Model: R3

By: Timetec Computing Sdn Bhd

① www.fingertec.com

- **Multiple Verification Methods** - From fingerprint to card and password verification, R3 provides the possibilities. Optimize your security threshold, with fingerprint verification as your primary enrolment form. Support Card ID in 64-bit or 20 digits card number length.
- **Comprehensive Access Solution** - Complement your R3 access control terminal with a R2c slave exit reader for a complete door-in and door out experience.
- **Data Management Simplified** - R3 is equipped with TCP/IP connectivity and when that is not available, a USB flash drive is available to transfer transaction logs into your computer.
- **Built In Alarm** - R3 allows installation of external alarm to your access system to alert you during emergencies and break-ins. Secure your premise with GroupTimeZone and Group Verify functions.
- **Precise Recognition with Biometrics** - R3 utilizes minutiae matching technology that ensures only enrolled users are granted access, eradicating buddy punching scenarios.
- **High Definition Color Display and Touch Panel** - Combining vibrance and function in a single stroke, our 2.4" color LCD and touch panel is bound to please in terms of aesthetics and function.
- **TimeZone Enable** - Secure your premise with timezone features by R3, providing you total control in your access needs. R3 has TimeZone, GroupTimeZone and Group Verify features at your disposal.
- **Free Firmware and Software Updates** - Functions and features are constantly evolving through technological research and industrial needs, hence our software and firmware updates for our devices come complimentary.



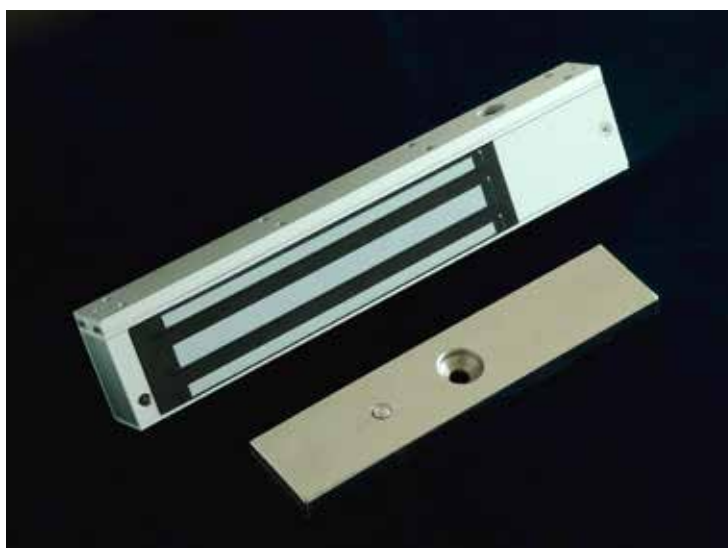


Model: Electromagnetic Lock With Time Delay - UL275T-SL

By: UWC Electric (M) Sdn. Bhd.

① www.uwcelectric.com

- Time Delay Function – Enable setting of door re-lock time via Time Adjustor.
- Built-in time delay function eliminates the need for costly add-on exit delay timers.
- Integrated Lock Status Monitoring feature (LSMF) with built-in bond sensor & LED Indication.
- Fail Safe
- Zero Residual Magnetism
- Dual Voltage operation - 12Vdc / 24Vdc selectable.
- Ease of installation with low maintenance & low energy consumption made it become a cost saving product.



Security Solutions Today is now on issuu!
issuu.com/securitysolutionstoday





Model: Pacom 8002 & 8003 Controller

By: Pacom Systems Pty Ltd

www.pacom.com

Pacom 8002 Controller

- Onboard Dual Ethernet ports
- Onboard Dual-flash memory allows firmware upgrades with no downtime
- Onboard support for multiple communication modes
- Onboard slots for cost effective expansion
- Integrated access control and intrusion alarm detection
- Auto-discovery of peripheral devices
- Small, medium and large variants for complete flexibility



Pacom 8003 Controller

- On-board Ethernet
- Onboard Dual-flash memory allows firmware upgrades with no downtime
- Onboard support for up to 2 doors, each with an IN and OUT readers
- Onboard slots for cost effective expansion
- Integrated access control and intrusion alarm detection
- Embedded web server for easy programming
- Standard 3U rack mount size





Model: ARK-2121 (IoT Gateway Starter Kit)

By: **Advantech Singapore Co. Pte Ltd**

① <http://select.advantech.com/iotgateway-2/>

- Pre-configured system featuring an Intel® Celeron® J1900 SoC and WES7E with 4GB Memory and 500GB HDD
- Built-in WISE-PaaS/RMM IoT software services for data management, device monitoring/control and security
- WISE-PaaS/RIM ready on Microsoft Azure Marketplace to enable big data analytics and prediction services
- Comprehensive developer tools and documents for unifying protocols and connecting various things
- Provides 3 hours of online consulting services with your exclusive account to submit, manage, and track service status
- IoT Developer Forum available to receive latest technologies, download software resources, and video training courses



Model: OSDP Networked Controller (AC-825IP)

By: **Rosslare Enterprises Ltd**

① www.rosslaresecurity.com

- Rosslare Enterprises Ltd. AC-825IP OSDP Networked Controller is now UL294 certified
- 4-door (In/Out) networked access controller
- Backbone of medium- to high-scale security system
- One onboard expansion slot – further 12-board expansion via OSDP
- Driven by AxTraxNG™ – powerful, flexible, and easy-to-use software
- Modular/expandable solution up to 58 doors per panel
- Perfect for commercial and enterprise applications
- AES 128-bit encrypted TCP/IP communication to AxTraxNG™ server
- Metal enclosure includes a Pull-Safe™ lockable mechanism to prevent accidental disconnection and tampering





Model: RPM-2804G

By: Connection Technology Systems Co., Ltd.

① www.icconnectron.com

- 24-port IEEE 802.3af/at PoE+ with 4 x Gigabit SFP Ports
- Total 480W or 240W PoE budget with 30W max. for each PSE/PoE+ port
- Full Layer 2+ Management Features
- 2K VLAN, 8 queues QoS, Advanced VLANs
- STP, RSTP, LACP, LLDP, 802.1X, RADIUS, TACAS+, ACL
- IPv4/v6 dual protocol
- Built-in Lightning Surge Protection
- API Ready for CMS Integration



Model: N-8000 & SX-2000

By: TOA Electronics Pte Ltd

① www.toa.com.sg

N-8000 Product Features

- System configuration by LAN with intuitive software
- Master-to-Master and Master-to-Sub station communication
- Choice of four wiring configurations: CAT5, 2-core shielded cables, 2 wires or 4 wires
- Integration with access control, voice alarm, CCTV and other such systems
- Time correction & System diagnosis
- Operation and stream logs
- Handset or hands-free conversation
- Three-party conferencing with Recall, Redial, Camp on busy, Mic-Off functions

SX-2000 Network PA Product Features

- Convenient system component distribution to different locations through a network
- Full digital signal processing for improved performance.
- Failure detection & emergency broadcasting
- Easy expansion simply by adding more units.
- Power consumption reduced and increased efficiency in power supply



N-8000



SX-2000

TRADE CONNECTION

Home page announcements for added business opportunities.

Register now, contact:

Tel: (65) 6842 2580 Fax: (65) 6842 2581 / 6745 9517

E-mail : info@tradelinkmedia.com.sg



- RFID Electronic Key Management System
- Guard Tour System
- Vehicle Access Control System
- Contactless Smartcard System
- Biometrics Verification System
- Multi - Technology Card Reader



WE THINK SECURITY

Blk 28 Kallang Place #06-12/14
Singapore 339158
Tel: (65) 6741 5200
Fax: (65) 6741 6200
RCB No: 19880111W
Email: info@coselec.com.sg
www.coselec.com.sg

This space could be yours for

US\$		Color		
1x	3x	6x	9x	12x
500	440	380	320	260

S\$		Color		
1x	3x	6x	9x	12x
775	682	589	496	403



• S O U T H E A S T • A S I A • CONSTRUCTION

Features civil and structural projects in the region and all over the world, the latest in construction equipment, materials, technology and industry news.



Showing products in categories that include access control, CCTV/surveillance systems, integrated security systems, detection and alarm systems, fire extinguishing systems and passive fire protection.



With a solid network of designers, installers, specifiers and rental specialists in the lighting, audio, and visual solutions industries, LAVA has what it takes to place your brand in the spotlight.

SOUTHEAST ASIA **building**

Asia-Pacific's leading source of information for professionals interested in the technique and technology of quality architectural, interior and landscaping design.



A regional trade magazine designed to reach a progressive, diverse and dynamic audience of the bathroom, kitchen and ceramic industries.



A publication that aims to promote lighting's purpose as an integral part of realising a quality built environment, emphasising the importance of the role of professional lighting designers in the total design process.



Scan to visit our website

TRADE LINK MEDIA PTE LTD

101 Lorong 23 Geylang #06-04 Prosper House Singapore 388399 T: (65) 6842 2580 F: (65) 6745 9517

W: www.tradelinkmedia.com.sg E: info@tradelinkmedia.com.sg



Model: A8in (ac) - Super WiFi Base Station

By: Altai Technologies Limited

www.altaitechologies.com

As an integral part of Altai Super Wifi network infrastructure, key benefits of the Altai A8-Ein (ac) include:

- Base station and antenna array in one integrated unit, eliminating RF cabling work. Simple installation at the rooftop, wall, tower and lamppost
- High 802.11 ac throughput capacity up to 1,167 Mbps data rate
- Extended coverage in a Non-Line-of-Sight (NLOS) environment which matched the foot print of most 3G deployments in dense urban environments
- Multi-beam 8x8:2 MIMO Smart Antenna Technology to provide superior signal strength and link budget in dense urban environment deployments
- 2.4 and 5 GHz dual band dual concurrent access
- Backhaul redundancy and access link safe mode
- Adaptive interference control mitigates the influence from surrounding interfering sources
- Standard 802.11b/g/n access and 802.11a/n/ac access / backhaul
- Giga Ethernet or integrated 802.11a/n/ac wireless backhaul
- Remote configuration through the Altai Wireless Management System (AWMS) or AltaiCare network management solution



Model: Checkpoint Classic N10 Antenna

By: Checkpoint Systems, Inc.

www.CheckpointSystems.com

- Low Cost
- Small Profile
- Great detection for size
- Ideal for smaller retail outlets
- Can be used in-lane if small antenna is required – in lane, staff entrances..
- Can be used as Single Side Band with larger full size antenna





Subscription Form

Fax your order today
+65 6842 2581

(Please tick in the boxes)

Southeast Asia Building

1 year (6 issues)

Singapore	S\$45.00
Malaysia / Brunei	S\$90.00
Asia	S\$140.00
America, Europe	S\$170.00
Japan, Australia, New Zealand	S\$170.00
Middle East	S\$170.00

SINCE 1974

Bathroom + Kitchen Today

1 year (4 issues)

Singapore	S\$32.00
Malaysia / Brunei	S\$65.00
Asia	S\$80.00
America, Europe	S\$130.00
Japan, Australia, New Zealand	S\$130.00
Middle East	S\$130.00

SINCE 2007

Southeast Asia Construction

1 year (6 issues)

Singapore	S\$45.00
Malaysia / Brunei	S\$90.00
Asia	S\$140.00
America, Europe	S\$170.00
Japan, Australia, New Zealand	S\$170.00
Middle East	S\$170.00

SINCE 1994

Lighting Today

1 year (4 issues)

Singapore	S\$32.00
Malaysia / Brunei	S\$65.00
Asia	S\$80.00
America, Europe	S\$130.00
Japan, Australia, New Zealand	S\$130.00
Middle East	S\$130.00

SINCE 2002

Security Solutions Today

1 year (6 issues)

Singapore	S\$45.00
Malaysia / Brunei	S\$90.00
Asia	S\$140.00
America, Europe	S\$170.00
Japan, Australia, New Zealand	S\$170.00
Middle East	S\$170.00

SINCE 1992

Lighting Audio Visual Asia

1 year (4 issues)

Singapore	S\$32.00
Malaysia / Brunei	S\$65.00
Asia	S\$80.00
America, Europe	S\$130.00
Japan, Australia, New Zealand	S\$130.00
Middle East	S\$130.00

SINCE 2013

IMPORTANT

Please commence my subscription in _____ (month/year)

Personal Particulars

NAME: _____
 POSITION: _____
 COMPANY: _____
 ADDRESS: _____

 TEL: _____ FAX: _____
 E-MAIL: _____

Professionals (choose one):

- Architect
 Landscape Architect
 Interior Designer
 Developer/Owner
 Property Manager
 Manufacturer/Supplier
 Engineer
 Others

I am sending a cheque/bank draft payable to:

Trade Link Media Pte Ltd, 101 Lorong 23, Geylang, #06-04, Prosper House, Singapore 388399

RCB Registration no: 199204277K * GST inclusive (GST Reg. No: M2-0108708-2)

Please charge my credit card (circle one): Amex / Diner's Club

Card Number: _____ Expiry Date: _____

Name of Card Holder: _____ Signature: _____



Model: Kirisun TP620 UHF (400-470 MHz) DMR Professional Digital Two-way Radio

By: GRID Communications Pte Ltd

① www.grid.net.sg

- Rugged design with IP67 certified and intrinsically safe proof.
- Long life, durable battery which can last for 14 working hours (in analogue mode) and 16 hours (in digital mode).
- Improves audio quality with its digital error-correction technology. Ensures louder and crisp voice communication with its AMBE + 2TM vocoder, 1.6W audio output and 40mm diameter powerful speaker.
- Achieves higher channel capacity without relicensing or rebanding, by working with a single repeater.
- Operates in analogue and digital modes by channel switcher and mixed mode scanning. Easy migration and flexibility to switch according to your budget.
- Promotes efficient communication and management of users through its services like individual call, group call, emergency call, radio enable and disable, remote monitor, radio check, call alert.
- Offers alternative communication through text message when it is inconvenient to use voice communication. A choice of 50 preset messages for quick transmission or you can choose to write message by keypad.
- Ensures secure communication with its 32 bit and 64 bit digital encryption technology.



ADVERTISERS' INDEX

ADVANTECH	17	ITE TECH	11
BMAM/GBR EXPO ASIA 2016	29	MICROENGINE	7
BOSCH	19	MILIPOL ASIA-PACIFIC 2017	47
COMNET	1	MORSE WATCHMANS	23
DELTA SCIENTIFIC	9	SAFETY & SECURITY ASIA 2016	IBC
FUJIFILM	15	SECURITY CHINA 2016	71
GENETEC	3	SECUTECH VIETNAM 2016	75
GIGA-TMS	51	SIDEP ELECTRONICS	5
IFSEC SOUTHEAST ASIA 2016	59	TRADE CONNECTION	101
IFSEC UK 2016	OBC	ZHEJIANG DAHUA	IFC



SAFETY & SECURITY ASIA 2016 SINGAPORE

IN CONJUNCTION WITH



THE 15TH INTERNATIONAL SAFETY & SECURITY TECHNOLOGY & EQUIPMENT EXHIBITION

HALLS B & C MARINA BAY SANDS SINGAPORE 28 - 30 SEPTEMBER 2016

WWW.SAFETYSECURITYASIA.COM.SG

ENHANCING PRODUCTIVITY THROUGH SMART SECURITY SOLUTIONS

A Part of Architecture & Building Services 2016



Design



Support



Light



Secure



Protect

Join Safety & Security Asia 2016 today to expand your business network with leading industry experts and players!

Safety & Security Asia 2016 brings together top experts and professionals in the field to showcase an extensive array of new technologies, solutions, products and services catering to the safety and physical security arenas. Don't miss out on this opportunity to connect with key players in the industry through this exciting conference-driven exhibition in conjunction with the Security Industry Conference 2016.

At SSA 2016, you can be sure to meet your key buyers: **Architects, Builders, Contractors, Developers, Engineers, Facility Managers, Government Agencies and Security Consultants & Managers!**

SSA 2016 will also be held in conjunction with ArchXpo, International Facility Management Expo, LED+Light Asia, Fire & Disaster Asia and Work Safe Asia 2016, creating a comprehensive and integrated platform for all building needs under one roof as part of **Architecture & Building Services 2016**.

Organised By



Conference & Exhibition Management Services Pte. Ltd.

Host



Security Systems Association of Singapore

Supporting Organisation



ASIS International Singapore Chapter

Event Highlight



Merlion Awards 2016

For sales enquiries, contact:

E: ssa@cems.com.sg

T: +65 6278 8666

F: +65 6278 4077

W: safetysecurityasia.com.sg

Concurrent Events





IFSEC International

SECURING PEOPLE, PROPERTY & ASSETS

Get the best products in the industry at the leading security exhibition and be secure

The global stage for security innovation and expertise

- ▶ Pre-book 1-2-1 meetings with the suppliers you really want to do business with the "Meetings Service"
- ▶ Learn from experienced security professionals and develop your knowledge by attending free seminars
- ▶ Grow your network through connecting with over 27,000 of other leading security professionals
- ▶ See the evolution of security systems in the Smart Zone, looking at Home Automation & Smart Buildings
- ▶ Addressing the demand in physical and perimeter security, visit the dedicated zone to find the right product for your business

 @IFSEC #IFSEC

21-23
June 2016
ExCeL London

REGISTER TO GET YOUR BADGE TODAY AT IFSEC.CO.UK/SOLUTIONS

Your badge also gives you entry to:



Supported by



Organised by



Part of

