

Security Solutions Today

September / October 2016



AVIATION PERIMETER SECURITY

Cover Focus Perimeter Security: Optimising the First Line of Defence

Security Feature How Brexit Affects the Security Industry & More...

Inside Look Alleviating Human Error with Management Access Control Systems

Regional Reports India is set to drive the Access Control Market across Asia & More...



Scan this code to
visit our website

Re-empower the coax with Dahua revolutionary **HDCVI 3.0**

- **Full Compatibility / Convergence**

Penta-brid: HDCVI/TVI/AHD/CVBS/IP

- **Ultra HD**

4 megapixel/4K, night vision, WDR

- **Intelligent(optional)**

Face recognition, smart tracking etc



intersec

SAVE THE DATE

22 – 24 January, 2017

Dubai, UAE

**The world's leading trade fair for
Security, Safety & Fire Protection**

7 Show Sections

Commercial Security
Information Security
Fire & Rescue
Safety & Health
Homeland Security & Policing
Smart Home
Perimeter & Physical Security

www.intersecexpo.com



messe frankfurt

CONTENTS

September-October 2016



6 CALENDAR OF EVENTS

8 EDITOR'S NOTE

IN THE NEWS

10 Around the World

21 Eye on Asia

COVER FOCUS

29 Perimeter Security: Optimising the first line of Defence

AVIATION APPLICATION STORIES

32 Deploying PIDS at Airports

34 Infinity 2020 Fence Mounted Intrusion Detection

36 Overcoming the limitations of Traditional Perimeter Surveillance

38 Reliable, Covert, Real-Time Protection with DAS Fiber Optic Monitoring

CASE STUDIES

40 Aviation Perimeter Security

70 General

REGIONAL REPORTS

44 India is set to drive the Access Control Market Across Asia

46 Ujjain City Surveillance

48 Kolhapur City Surveillance

SECURITY FEATURES

50 How Brexit Affects the Security Industry

52 The Biometric Citizen

54 What to Know about Contactless Cards and Readers for Electronic Access Control Systems

60 Access Control: Why open systems are the future

62 How security guard callouts can be reduced by adding network audio to video surveillance

INSIDE LOOK

66 Alleviating Human Error with Management Access Control Systems

RADIO COMMUNICATION TECHNOLOGY

82 Small but extremely Powerful

PRODUCT SPOTLIGHT

86 **PRODUCT SHOWCASE**



Our focus is to make
darkness totally visible



starlight. The inventors take it to the next level. Bosch cameras with new starlight technology are the gold standard in low light video performance. We've upgraded the original with better light sensitivity, a choice of resolutions, dynamic ranges up to 120 dB and up to 60 frames per second. Plus video analytics at the edge as standard, with no additional investment of license fees, to make high quality images more relevant. **Learn more at www.boschsecurity.com/hdsecurity**



BOSCH
Invented for life

Publisher

Steven Ooi (steven.ooi@tradelinkmedia.com.sg)

Editor

Sharanya M (sst@tradelinkmedia.com.sg)

Radio Technology Consultant

Martin Gillmon (martin.gillmon@tradelinkmedia.sg)

Group Marketing Manager

Eric Ooi (eric.ooi@tradelinkmedia.com.sg)

Marketing Manager

Felix Ooi (felix.ooi@tradelinkmedia.com.sg)

Marketing Executive

Mastasha Ajang (mastasha@tradelinkmedia.com.sg)

**Head Of Graphic Dept/
Advertisement Co-ordinator**

Fawzeeah Yamin (fawzeeah@tradelinkmedia.com.sg)

Graphic Designer

Siti Nur Aishah (siti@tradelinkmedia.com.sg)

Circulation

Yvonne Ooi (yvonne.ooi@tradelinkmedia.com.sg)



Photo Credit: Photographer - Wayne Williams
Port Hill Productions.
Designed by Fawzeeah Yamin

Printed in Singapore by KHL Printing Co Pte Ltd.

Security Solutions Today

is published bi-monthly by
Trade Link Media Pte Ltd
(Co. Reg. No.: 199204277K)
101 Lorong 23, Geylang,
#06-04, Prosper House, Singapore 388399.
Tel: 65-68422580 Fax: 65-68422581
ISSN 2345-7104 (Print)

The magazine is available free-of-charge to applicants in the security industry who meet the publication's terms of control. For applicants who do not qualify for free subscription, copies will be made available, subject to the acceptance by the publisher, of a subscription fee which varies according to the country of residence of the potential subscriber in the manner shown on the right.

The editor reserves the right to omit, amend or alter any press release submitted for publication. The publisher and the editor are unable to accept any liability for errors or omissions that may occur, although every effort had been taken to ensure that the contents are correct at the time of going to press.

The editorial contents contributed by consultant editor, editor, interviewee and other contributors for this publication, do not, in any way, represent the views of or endorsed by the Publisher or the Management of Trade Link Media Pte Ltd. Thus, the Publisher or Management of Trade Link Media will not be accountable for any legal implications to any party or organisation.

Views and opinions expressed or implied in this magazine are contributors' and do not necessarily reflect those of Security Solutions Today and its staff. No portion of this publication may be reproduced in whole or in part without the written permission of the publisher.

ANNUAL SUBSCRIPTION:

Surface Mail:

Singapore - S\$45 (Reg No: M2-0108708-2
Incl. 7% GST)

Airmail:

Malaysia/Brunei - S\$90
Asia - S\$140
Japan, Australia,
New Zealand - S\$170
America/Europe - S\$170
Middle East - S\$170

ADVERTISING SALES OFFICES

Head Office: Trade Link Media Pte Ltd.
(Co. Reg. No: 199204277K)
101 Lorong 23, Geylang, #06-04, Prosper House, Singapore 388399.
Tel: +65 6842 2580; Fax: +65 6842 1523, 6846 8843, 6842 2581.
Email (Mktg): info@tradelinkmedia.com.sg

China & Hong Kong

Iris Yuen
Room 1107G, Block A,
Galaxy Century Building
#3069 Cai Tian Road,
Futian District
Shenzhen
China
Tel : +86-138 0270 1367
sstchina86@gmail.com

Japan:

T Asoshina/Shizuka Kondo
Echo Japan Corporation
Grande Maison, Rm 303,
2-2, Kudan-Kita, 1-chome,
Chiyoda-ku, Tokyo 102,
Japan
Tel: +81-3-32635065
Fax: +81-3-32342064

NEW EVOLIS' PRIMACY LAMINATION

ADD A NEW LAYER



OF SECURITY

Card Lamination Module

Primacy Printer



Take your security to a higher level

Primacy Lamination encodes, prints, and laminates all your cards in one single pass. The system applies a clear or holographic film onto your ID cards, thus securing the cards and increasing their durability.

www.evolis.com

evolis



CALENDER OF EVENTS



IFSEC SEA 2016

Date: 7 – 9 September 2016
 Venue: Kuala Lumpur Convention Centre, Malaysia
 Contact: Zakwan Ramlan
 Organiser: UBM
 Tel: +6-03-2176 8788
 Email: zakwan.ramlan@ubm.com
 Website: <http://www.ifsec-global.com/sea/>

Safety & Security Asia 2016

Date: 28 – 30 September 2016
 Venue: Halls B & C, Marina Bay Sands, Singapore
 Contact: CEMS
 Organiser: Conference & Exhibition Management Services Pte Ltd (CEMS)
 Tel: +65 6278 8666
 Email: info@cems.com.sg
 Website: www.safetysecurityasia.com.sg

Security China 2016

Date: 25 – 28 October 2016
 Venue: China International Exhibition Centre (New Centre), Beijing
 Contact: CSPIA Office
 Organiser: China Security and Protection Industry Association
 Tel: +86-10-68731701
 Email: secu_chinashow@aliyun.com
 Website: www.securitychina.com.cn/english/

Big 5 Construct Indonesia

Date: 9 – 11 November 2016
 Venue: Jakarta Convention Centre, Indonesia
 Contact: Patrick Gedeon
 Organiser: DMG Events
 Tel: +971-4-44380355
 Email: patrickgedeon@dmgeventsme.com
 Website: www.thebig5constructindonesia.com

ISC East 2016

Date: 16 – 17 November 2016
 Venue: Javits Center North, New York City
 Contact: Sherida Sessa
 Organiser: The International Security Conference & Exposition
 Tel: (203) 840-5831
 Email: ssesa@reedexpo.com
 Website: www.isceast.com

IFSEC India 2016

Date: 8 – 10 December 2016
 Venue: Pragati Maidan, New Delhi
 Contact: Pankaj Jain
 Organiser: UBM India
 Tel: +91 (0) 11 66517606
 Email: pankaj.jain@ubm.com
 Website: www.ifsec-global.com/india/

Intersec 2017

Date: 22 – 24 January 2017
 Venue: Dubai International Convention and Exhibition Centre
 Organiser: Messe Frankfurt Middle East GmbH
 Tel: +971 4 389 4500 Fax: +971 4 358 55 33
 Email: intersec@uae.messefrankfurt.com
 Website: www.intersecexpo.com

Milipol Asia Pacific/ GSA 2017

Date: 4 – 6 April 2017
 Venue: Sands Expo and Convention Centre, Singapore
 Contact: Andrew Marriott
 Organiser: The GIE Milipol, Comexposium and GSA Exhibitions Pte Ltd
 Tel: +65 6392 5328
 Email: andrew.marriott@comexposium-sg.com
 Website: www.milipolasiapacific.com/

IFSEC UK 2017

Date: 20 – 22 June 2017
 Venue: ExCel London, United Kingdom
 Contact: Gerry Dunphy
 Organiser: UBM EMEA
 Tel: +44(0) 20 7921 8063
 Email: gerry.dunphy@ubm.com
 Website: <http://www.ifsec.co.uk>

MicroEngine®

Integrated Security Systems

The Trusted Brand in Security Solutions

Plato DesFire Reader



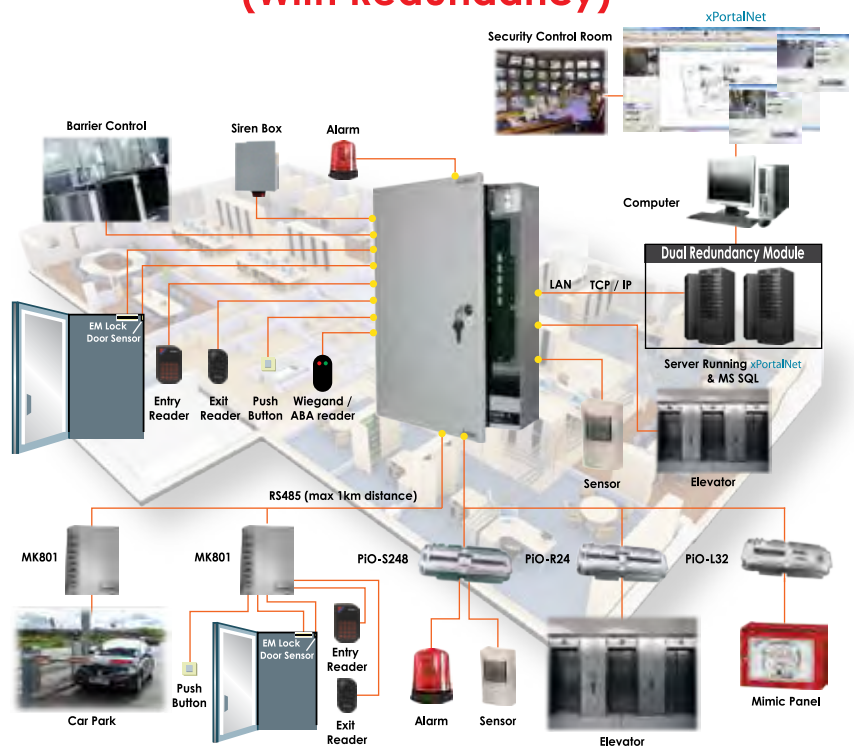
- ▶ 64 Bit Programmable Card ID
- ▶ Encrypted with 3DES
- ▶ Card ID Not by Serial Number

P1000i PoE Controller



- ▶ PoE with Battery Charger
- ▶ AES128 Encrypted IP
- ▶ Support 1 Door/2 Readers

Integrated Security System (With Redundancy)



Projects



Commercial /
Complex



Factory



Condominium



Plato Reader - Slim Card Reader



600+ readers ward access & security system on SQL Server for hospital and many more ...

enquiry@microengine.net
www.microengine.net



Our Office





Editor's Note



Dear esteemed readers,

Greetings from SST!

How time flies. As we step into the latter half of yet another exciting year, I hope you are looking forward to this latest edition of Security Solutions Today.

This Sept/Oct Issue propels you into the dialog surrounding the global situation of Aviation Perimeter Security. This issue promises to make accessible, new age technological solutions to security concerns in the Aviation Industry. In the Cover focus, Siemens Building Technologies gives us valuable insight into the security challenges faced by Airports. Following which, a variety of application stories present you with security solutions that compete to be the most illustrious in addressing the needs of modern day Airport infiltrations and surveillance.

In the thematic case studies, we will survey 2 Airports and their perimeter defence in detail. What is also exciting about this issue is its resonance with current events such as Brexit that will impact the security industry. In a series of Security Features, this magazine gives readers more knowledge about Biometrics, Access Control etc. in new light and from new perspective.

Via the regional reports, this issue will transport you to India! In 3 interesting reads, India's city surveillance and the market analyst report give you a summary of what's new and progressive in the Indian security market.

In the Radio and Communication Technology section, Airbus shares with us the role radios play in aiding Firemen with their job.

I hope you enjoy reading this issue as much as I enjoyed assembling it!

I wish you all an eye-opening read.

Sharanya M

Editor



HD300 High Security Electronically-Controlled Barrier



DSC720 High Security Bollard



DSC1200 High Strength Surface Mounted Barricade



DSC2000 High Security Barricade



DSC501 High Security Barricade



DSC288 High Security Sliding Gate



DSC207 High Security Shallow Foundation Barricade



DSC7000 High Security Beam Barrier



DSC600 High Security Shallow Foundation Fixed Bollard



DSC1100 High Strength Portable Barrier



TT207SFM High Security Surface-Mounted Barricade



DSC7500 High Security Swing Beam Barrier



TT212 High Strength Beam Barricade



TT280 High Security Linear Crash Gate

Delta Keeps Them Stopped!

18,000+ Systems Deployed Around the World!

Stopping a bomb-laden car and SUV from penetrating the entrance to a consulate to guarding against vehicle assaults at dams, border crossings, court houses, embassies, capitol buildings, palaces, hotels, headquarters buildings and many other types of important facilities, Delta's bollards, barricades, beams, barriers, gates and guard booths keep vehicles stopped, keeping people and property safe in over 130 countries throughout the world since 1974.





Hikvision Darkfighter PTZ wins 'CCTV Product of the Year' in PSI Premier Awards 2016

Ultra-low-light PTZ camera range wins reader vote in UK security magazine's annual product awards

Hikvision, the world's leading supplier of innovative video surveillance products and solutions, is proud to be the winner of the CCTV Product of the Year 2016 category in the PSI Premier Awards for its range of Darkfighter PTZ cameras. The industry-leading ultra-low-light cameras provide crystal-clear color images down to as low as 0.002 lux, in black & white to 0.0002 lux, and to 0 lux with IR - conditions that would defeat conventional low-light models.



Best of the Industry

UK security industry magazine PSI bestows its Premier Awards annually, with a reader vote honoring the products and distributors deemed the best the industry has to offer. According to PSI editor Andy Clutton, over 1000 nominations were received across the Awards' eight categories in 2016. Features, benefits, ease of installation and service were all factors taken into consideration in the nomination process.

Hikvision International Marketing Director, Keen Yao, says the company is delighted to win the PSI Premier Award. "We're thrilled to receive this award from the readers of such a well-respected publication," he says. "We believe our Darkfighter PTZ cameras offer outstanding performance, features and value, and we're honored to see that the readers of PSI magazine agree."

Superior Performance

The Darkfighter PTZ range features up to 36x optical zoom large 1/1.9" progressive scan CMOS chip with 2MP full HD resolution. The cameras integrate up to 200m IR for true darkness vision with EIS (Electronic Image Stabilization), 120dB WDR, 3D DNR, and IP66 environmental protection. The range also boasts a host of Smart detection technologies and Smart Tracking function to further improve image quality and operational convenience, and streams full HD 1920 x 1080 video at full frame rate.

Real World Results

The Darkfighter PTZ is producing a raft of positive results for the City of Salford, in England's northwest. The Council's CCTV operatives had struggled when using previous cameras to provide an effective 24-hour monitoring service because they were unable to obtain high-quality, low-light images in the late evening. That changed when they installed Hikvision Darkfighter PTZs in Eccles Town Centre, and were immediately able to view and record high-resolution colour images even after 11pm at night - when the majority of incidents occur.

Salford Deputy City Mayor Councilor David Lancaster said: "We were astonished at the clarity produced by the new 'Darkfighter' cameras. They really do turn night into day and give us pin sharp images which help immensely."

For more information, please visit: www.hikvision.com. **SS7**



cchdtv.org

cCHDTV

enables

true digital upgrades without cable change

DTV cameras, based on cCHDTV technology, provide high-quality surveillance videos and work on existing coaxial cables. cCHDTV is the answer to a facile surveillance system upgrade

Features of DTV Products

- One x Multiple: multiple UHD video over one coax, simultaneously.
- COFDM: advanced COFDM technology to deliver digital video.
- Long distance: no amplification required over 1km.
- Flexible installation: upgrade without cable change. Flexible topologies.
- Easy integration: easy integration to network (IP) and power (POC) system.

Global Makers



ITE 聯陽半導體
ITE Tech. Inc.

ITE Tech, Inc. Taipei Branch
7F, No. 233-1, Baociao Rd., Xindian Dist.
New Taipei City, 23145, Taiwan
T/+886-2-29126889 x2654
F/+886-2-29102551
itesupport@ite.com.tw
<http://www.ite.com.tw>



Edesix Appoints David Carrick to Board of Directors

Edesix Ltd., a market leader in the provision of body worn camera (BWC) solutions, has announced the appointment of technology veteran David Carrick to its Board of Directors.

Carrick currently leads SAS R&D Scotland as its Managing Director, and boasts a technology background of over 30 years. Beginning his career with Ferranti and Polaroid, Carrick held the position of CEO at Memex before leading the company's buy-out in 2001; subsequently growing the organisation over ten years to become a recognised global leader in Law Enforcement solutions.

Since the company's acquisition by market leader SAAS in 2010, Carrick, in his position as MD for Scotland, has dedicated his time to creating the next generation of solutions for global law enforcement and intelligence communities.

Richie McBride, Managing Director and Founder of Edesix commented: "Having someone with David's experience is invaluable to a company like Edesix. As we continue to grow globally, and expand our offering to the market, David's guidance & knowledge of international business, alongside his law enforcement solutions background, will be highly valued."

Carrick commented of his appointment: "Edesix is at an exciting time in its business, and has a sound and proven offering for a market which is demanding sophisticated body worn solutions. My appointment to the board is a firm indication of Edesix's intention to strengthen its offering within the global market place."

Headquartered in Edinburgh, and established in 2002, Edesix is a global market leader in the production and



provision of body worn cameras. BWC's are proven to help improve the safety for those in public facing roles, while producing compelling legal evidence when needed. Edesix currently supplies key markets across the globe, through direct sales and international partners, to geographies including the UK, Europe, USA, Canada, the Middle East and Australasia.

For more information, please visit: www.edesix.com. SST





Delta Portable Anti-Terrorist Barriers to Protect GOP Convention

Stop 7.5 Ton (6400 Kg) Vehicles Traveling 40 mph (64 kph)

Delta Scientific, the leading manufacturer of counter-terrorist vehicle control systems used in the United States and internationally, today announced that 21 Delta MP5000 mobile deployable vehicle crash barriers will be used by the Secret Service at the upcoming Republican Convention running July 18-21 in Cleveland. The certified crash vehicles will protect attendees from terrorist vehicle attacks and errant driver mistakes. Provided through Global Access Control Systems (Pittsburgh), these mobile deployable vehicle crash barriers carry a K8 rating (M40 ASTM rating), stopping 7.5 ton (6400 Kg) vehicles traveling 40 mph (64 kph).

"This is just the latest in a series of highly publicized events that leverage our mobile barriers," emphasized Greg Hamm, Delta Scientific vice president of sales and marketing. "They were at both political conventions in 2012 in Tampa and Charlotte as well as at the following Inauguration. They've also protected international dignitaries at recent G20, Nuclear and NATO Summits. Last September, they protected the Pope on his visit to the United States."



In Cleveland, the totally self-contained MP5000's will be towed into position to control vehicle access within 15 minutes. No excavation or sub-surface preparation is required. Once positioned, the mobile barricades will unpack themselves by using hydraulics to raise and lower the barriers off their wheels. DC-powered pumps will then raise or lower the barriers.

Delta always keeps an inventory of the MP5000s for purchase and quick delivery at their manufacturing facility in Palmdale, Calif. In many cases, they are needed for events that come up quickly, such as politician or celebrity visits and other unexpected incidents.

For more information, please visit: www.deltascientific.com. **SST**

Genetec Inc. Announces New Version of its Unified IP Security Platform, Security Center

Security Center Version 5.5 Introduces New Disaster Recovery Mode, Expansion of Access Control Ecosystem and Enhanced Cybersecurity Features

Montréal - Genetec Inc. ("Genetec"), a leading provider of open-architecture, unified IP security solutions today announced version 5.5 of Security Center, the company's open architecture, unified IP security platform that combines access control, video surveillance, ALPR, and communications. Security Center 5.5 offers a new disaster recovery mode, enhanced levels of authentication and encryption,

augmented video archiving and export management capabilities, and new choices of supported access control hardware. With innovative capabilities designed to help organizations better secure their sites, version 5.5 gives administrators greater control and protection of their security infrastructure. Security Center 5.5 is available now via the Genetec worldwide channel partner distribution network.

continue on page 14



Unified Platform Enhancements

With a new disaster recovery mode that allows the configuration of multiple failover directory servers at remote sites, Security Center 5.5 allows customers to implement more elaborate disaster recovery plans for their security platform. In the event of a disaster, failover servers at geographically disparate location can immediately take control and ensure organizations continue to have access to their security platform and protect their people and assets.

Offering a powerful yet efficient user experience remains a paramount driver for Security Center development. In this latest release, map-centric monitoring offers enhanced, fluid map scaling for zooming effortlessly in and out of maps—from floorplans to satellite imagery—along with the option to geo-reference dynamic objects on a map with actual geographic coordinates for greater awareness, and add new map layers. With map layering, operators can add or remove details from a map in real-time to narrow or broaden visualization of a site. To further simplify alarm management,

Security Center 5.5 features alarm grouping and filtering so that operators can group alarms visually by type, state, or priority, as well as handle entire collections of alarms, such as acknowledging or forwarding an entire group.

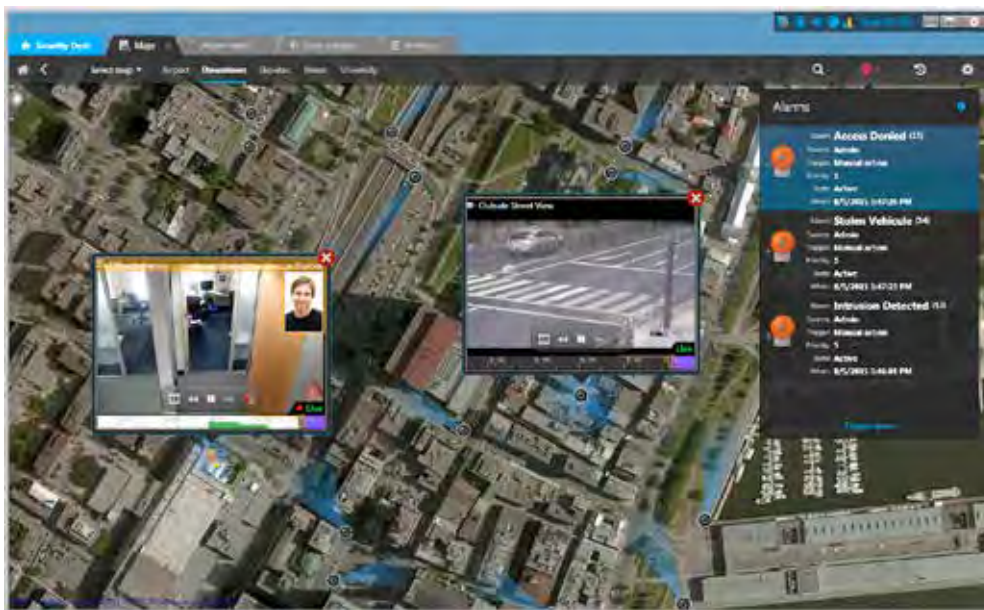
As part of a continuous effort to grow its ecosystem of technology partners and facilitate integration to Security Center, Genetec offers two flavors of its Software Development Kit (SDK). The Basic SDK is a freely-available package used to connect to Security Center and access configuration information, events and alarms in real-time, as well as make changes or add new tasks to the monitoring client app. A simplified online enrollment and acceptance process, that is largely automated, gives users quick access. An advanced SDK package offers all the elements of the Basic SDK with access to additional tools required by more complex integrations, and is available through Genetec certified channel partners.

Omnicast™ Video Management Enhancements

Building on the advanced cybersecurity measures introduced in Security Center 5.4, and the

company's ongoing commitment to 'Security of Security', version 5.5 offers a 'hardened' protocol that protects against potential hacking and non-authorized internal access. When users request to access video feeds, new authentication and authorization steps are in place to protect video data and privacy. By default, only secured media stream requests are accepted, ensuring the app or person making the request is authenticated to avoid any unauthorized requests. Token-based authentication is applied for authorizing and authenticating RTSP video requests, TLS encryption for securely transmitting these user authentication tokens, and RTSP over TLS for another level of video stream encryption while in transit.

Security Center 5.5 also offers users the ability to finely manage exported or saved content, such as video clips and snapshots, which facilitates modifications prior to sharing inside or outside an organization. Examples include the blurring and masking of snapshots to protect privacy, editing saved video clips to remove either sensitive or less valuable content and then re-exporting the final clips, adding new bookmarks to better qualify



continue on page 15



a recorded scene, and more. Sharing is made simpler by exporting video to the widely used MP4 format so as to leverage common off-the-shelf video players and eliminate the need for proprietary video players.

Synergis™ Access Control Enhancements

Security Center 5.5 also features new access control capabilities to improve organizational security, protect sensitive information, and increase customers' choice of access control hardware.

Through the support of the latest firmware running on the Synergis™ Cloud Link appliance alongside Mercury Security controllers, organizations are able to extend the reach of their security platform with Allegion Schlage AD-300 Hardwired and AD-400 Wireless electronic locks. Organizations can also unify controller-based and electronic lock-based security systems in the process for a more inclusive approach to access control. Security Center 5.5 introduces Peer-to-Peer (P2P) communications between Synergis Cloud Link appliances enabling global IO linking and

global antipassback.

Even when connectivity to the server is unavailable, Synergis Cloud Link appliances have the intelligence to share information across the network, like inputs triggering outputs across appliances and by extending the functionality of antipassback to areas managed by multiple appliances. This added flexibility enables users to move away from relying on constant connection to the server that improves overall security.

For greater protection of confidential and sensitive data, additional means of encrypting communications have been implemented between the Synergis Cloud Link appliance and the server along with numerous industry-leading Genetec access control hardware partners, including Mercury Security (EP controllers) and Assa Abloy (IP locks). The primary goal is to ensure secure communications throughout a customer's entire access control infrastructure.

For more information, please visit: www.genetec.com. *SST*



UHF New Series from 840 - 960 MHz

We help to simplify your UHF application in all environment.

- ✔ 0.5W/1W UHF read/write modules
- ✔ UHF antenna OEM/ODM customized design:
 - Patch Antenna
 - Array Antenna
 - Ceramics Antenna
 - Chip Antenna
 - Paper Antenna
- ✔ UHF project consultation and design
- ✔ SDK/API available



GIGA-TMS INC.
Quality, Delivery & Service
Tel: 886-2-26954214

8F No. 31 Lane 169, Kang Ning Street, Hsi Chih Dist, New Taipei City, Taiwan
<http://www.gigatms.com.tw/>
 Email: promag@gigatms.com.tw
 GIGA-TMS INC. © 2015 All Rights Reserved.



Milestone VMS and Oncam Cameras Lead to “Remarkable” ROI

UK’s Leading Logistics Company upgrades to Milestone XProtect VMS and Oncam 360° cameras to protect people and premises

COPENHAGEN - Milestone Systems, the open platform company in IP video management software (VMS), has collaborated with Oncam and AsPro Security to deliver a cost effective security solution to one of the UK’s leading logistics company. The solution combines Milestone XProtect Professional software and BCDVideo storage with Oncam 360° cameras that provide comprehensive coverage of the site, resulting in full situational awareness.



The previous video management system at the international logistics and supply-chain company could no longer provide all the coverage and information needed for their UK site. Specializing in surface transportation, freight brokerage, warehousing and distribution, ample coverage and image clarity were vital for verifying compensation claims and for reinforcing health and safety policies.



Independent security consultant AsPro Security redesigned the site’s video monitoring system, incorporating Milestone XProtect Professional software with Oncam’s 360° camera technology. The unique pairing has improved adherence to safety policies and guidelines and saved approximately \$65,000 in the first three months of the installation.

“The ROI of the upgraded video monitoring system has been remarkable,” says AsPro’s Technical Manager, Nick Sergeant. “Within the first three months, the site saved approximately \$65,000 in false and erroneous claims, which paid for the upgraded system almost twice over.”

Video monitoring has not only helped the company with saving money but also prevented incidents and injuries to maintain an excellent safety culture. Extremely detailed footage retrieved from Oncam 360° cameras has been incorporated into safety training at the site to help communicate health and safety policies, as well procedural guidelines, more effectively. As a result, staff have gained a better understanding of how they make the working environment safer for everyone.

“The use of 360° cameras as a business tool is growing fast,” says Scott Brothers, VP of Business Development at Oncam. “They’ve already proved themselves in retail and education, and these excellent outcomes show how they can play a critical part in improving health and safety and operational efficiency in the logistics industry.”

For more information, please visit: www.milestonesys.com. **ESST**



Siemens once again European Building Technologies Company of the Year



Siemens Building Technologies is Frost & Sullivan's "2015 European Building Technologies Company of the Year": Peter Hallberg, head of BT Region Europe North (on the left), accepts the award from Aroop Zutshi, Global President and Managing Partner at Frost & Sullivan, on behalf of BT.

Consulting firm Frost & Sullivan has honored the Siemens Building Technologies Division with its 2015 European Building Technologies Company of the Year Award, recognizing its outstanding services and solutions. Peter Hallberg, Head of BT Region Europe North, accepted the award in London from Aroop Zutshi, Global President and Managing Partner at Frost & Sullivan.

Explaining their decision, the experts at Frost & Sullivan emphasized Siemens' leading role in driving developments for the entire industry: "In the building technologies industry, Siemens has demonstrated exemplary performance focused, above all, on customer-oriented innovation," said Zutshi.



Copyright: Frost & Sullivan

The Siemens Building Technologies Division's claim as an innovative market leader for safe, energy-efficient and environmentally friendly buildings and infrastructures is underpinned by a comprehensive solutions and service portfolio. A current example is the cloud-based Navigator energy management platform. The visualization software displays data streams in condensed and, typically, graphical form. The result is an enterprise-wide view of the energy and operating performance, both at a high level and in detail. Navigator is a customizable, scalable and easy to use portal that efficiently supports the monitoring of building system performance, energy demand and energy supply.

For more information about the Building Technologies Division, please visit: www.siemens.com/buildingtechnologies or about the award, please visit: www.siemens.com/press/fs-award-2015. **ESST**



Milestone Systems Celebrates Partner Community Focus at IFSEC 2016

Busy Milestone booth at IFSEC confirms position as market leader. Positive response to community messaging, strategic partnerships and world class performance poured in

COPENHAGEN –Milestone Systems, the open platform company in IP video management software (VMS), showcased the award-winning XProtect portfolio and vertical partner solutions at a crowded IFSEC 2016 stand held in London last month.

A range of camera partners and solution partners presented at the Milestone booth illustrating the continuing power of open platform technology and the ever-expanding partner community. This was the most successful IFSEC event ever for Milestone and its partners.

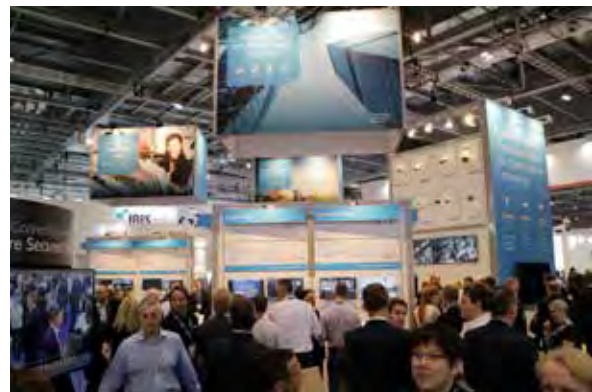
The focus at the Milestone booth was safe cities and smart buildings illustrated through partner community solutions and high performance systems. Proof-of-performance demonstrations with Dell and Milestone Husky M500A NVR with 600Mb/s performance were presented. Both demonstrations proved extremely popular indicating strong market demand for high-performing solutions based on true open platform technology.

Two new strategic partnerships announced

Milestone announced two new strategic partnerships at the tradeshow. This direct result of the Milestone commitment to the partner and customer communities serves to enhance the solution power for the communities.

The first partnership is with Dell OEM Solutions. This partnership brings high-performance server solutions to the EMEA market and partner communities of Dell and Milestone.

“We have been working closely with Milestone for a number of years and are delighted to have taken our collaboration further by leveraging the Dell Customer Solution Centres. By opening our IP Video Platform Design and Calibration lab located at the Customer Solution Centre in Limerick, it enables specialist partners like Milestone to provide their customers and integrators with validated and benchmarked solutions,” says Dermot O’Connell, Executive director and general manager, OEM Solutions, Dell EMEA. “Dell has more than 20 years’ experience working with customers



and partners to deliver industry solutions, and this collaboration is a great example of Dell’s end-to-end capabilities and CCTV vertical expertise.”

The second strategic partnership is with Nedap. It illustrates a commitment to deep integration between the Milestone XProtect VMS and Nedap’s AEOS Access Control. This partnership also brings close cooperation between their mutual target markets.

“The best of video management and access control will be combined into a solid, seamlessly integrated security solution,” says Sieger Volkers, Managing Director Security Management at Nedap. “We’re committed to developing a deep integration between our Access Control platform AEOS and XProtect, reducing delivery risks and complexity for our mutual partners.” The enabling factor behind the easy and flexible integration between AEOS Access Control and Milestone video management software is the extended integration capabilities of Nedap’s AEOS and Milestone Integration Platform Software Development Kit (MIP SDK) 2016.

continue on page 19



Both XProtect Smart Client and AEOS provide a consolidated interface with functions to effectively monitor access events, manually assist passages and conduct investigations of specific access points or cardholders. Milestone and Nedap are committed to providing the market with a deep, seamless integration that allows users quickly to respond, react and adapt to suspicious situations.”

“Our partner community is an essential part of our

success now and in the future. The response from the visitors at IFSEC has been clear encouragement for us to accelerate our community approach even further,” says Thomas Lausten, VP EMEA Milestone Systems. “We are also thrilled about the new strategic partnerships with Dell and Nedap and the extra opportunities these high-profile partnerships bring to our partner community.”

For more information, please visit:
www.milestone.com. *SST*

GJD Laser-Watch® (GJD515)

GJD, one of the world’s most innovative leaders in British manufacturing and design of professional external detector equipment, recently launched the Laser-Watch®, a long range IP connected laser surveillance sensor

System design

At the core of the Laser-Watch’s design is functionality and ease of use. With this approach, the customer will find many advantages including quick and easy installation, effective outdoor surveillance for a variety of sectors and adjustable settings such as programmable detection range and twenty fully adaptable alarm zones.

One of the major benefits is that it can be used as a standalone unit or as part of a security system with multiple IP surveillance sensors and IP cameras connected to a server. Another benefit is the twenty fully adjustable alarm zones each with their own sensitivity settings and alarm actions.

Additionally, the Laser-Watch® has an intuitive web based user interface for fine tuning sensor settings and configuring network alarms for integration with all network based surveillance software. GJD is offering free practical hands-on Laser-Watch® training to give users a real-life experience of this unique detector.

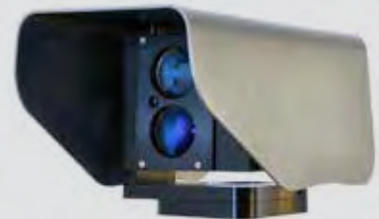
High performance

Designed from the ground up with high accuracy detection in mind, the Laser-Watch® delivers unrivalled levels of performance as it not only detects an intrusion, but it also knows the exact position of an object or human. Its reliability and accuracy ensures that false alarms are kept to near zero and only genuine detection threats are captured.

Another key benefit is pinpoint precision. For example, the sensor can be set to react only to cars in a specific lane, to alarm only if an object has stopped or if a door opens, whilst all other activities are ignored.

Wide range of applications

Typical applications include perimeter control as the sensor can detect all objects crossing a virtual fence, which is especially useful when a physical fence is not desirable.



The Laser-Watch® is a powerful sensor for detecting objects and humans with great accuracy up to 500 metres away and without the need for lights, reflectors or separate transmitters/receivers as used by other systems.

The Laser-Watch® is also perfect for spot surveillance in an exact area, for example an entrance to a house or along a wall. The innovative sensor can be used to detect if an object moves, as it can be located anywhere with a clear line of sight to the object.

It is also the perfect solution for police stakeout operations and other temporary perimeter security systems including harbours, airports, large industrial areas and large freight terminals.

For more information about the Laser-Watch® or to book product training, please email: info@gjd.co.uk or visit www.gjd.co.uk. *SST*



GJD is exhibiting at Security Essen

GJD, a leading British manufacturer of professional security equipment, will be showcasing its world class range of outdoor security products at Security Essen, Hall 3.0, Booth 3B60 on the 27th September to 30th September 2016. Several products from the GJD Range will be presented including new D-TECT IP motion detectors, Clarius PLUS Infra-Red and White-Light LED illuminators and state-of-the-art LASER sensors.

Now in its 40th year, Security Essen is one of the world's largest and most important security exhibitions. GJD is once again looking forward to exhibiting at this reputable security event. Ana Maria Sagra-Smith, GJD's Sales and Marketing Director commented: "This year, we are showcasing our cutting-edge product range and will demonstrate the wide range of applications for our products. We are really looking forward to meeting with our existing and prospective customers to show how GJD can help with their security projects."

Visitors to GJD's booth will see live product demonstrations of the D-TECT IP motion detectors. A major benefit of the D-TECT IP is that it provides real-time remote access, to enable monitoring and programming from anywhere in the world and at any time.

The D-TECT IP works in conjunction with a bespoke web based interface affording intuitive and quick online access, giving users the ability to change detector settings remotely via the interface. Some of the adjustable settings include LUX level sensitivity and detection range.

Key features of GJD's products include the ability to withstand harsh weather conditions, low maintenance and eye pleasing aesthetics.

GJD's product experts will also demonstrate the innovative D-TECT Laser, which offers ultimate



performance and precision designed for perimeter protection and intruder detection. Features include two detection areas, which can be programmed to within 10cm, IP65 housing for internal or external applications and a virtual tamper.

The D-TECT Laser is well suited for a wide range of applications including a virtual wall or fence, open sites and automatic gates and industrial doors, to name a few. Visitors to GJD's booth will also see the Clarius Plus range of Infra-Red and White-Light LED illuminators. One of the major advantages of the Clarius Plus is its interchangeable lens diffuser system, which provides a quick and user-friendly method to easily alter the angle of illumination to deliver angles of 10, 30, 60, 80 and 120 degrees.

If you would like to pre book an appointment with a GJD representative, please email info@gjd.co.uk.

For more information, please visit:
www.security-essen.de/for-visitors/ticketshop/ **EST**

Do you have news for us?

Good! Email us at [sst@tradelinkmedia.com.sg](mailto:ss@tradelinkmedia.com.sg)





INTERPOL World 2017 - Shaping security through innovations and partnerships

Singapore – The world's largest international police organization, INTERPOL, has announced that the second edition of INTERPOL World will take place from 5 to 7 July 2017.

Providing a strategic platform to shape future security, this trade exhibition and congress encourages dialogue amongst key stakeholders and the sharing of best practices, allowing solution providers to present innovative and more accurate responses to security threats.

With many nations gearing up to launch smart cities projects, the security landscape is evolving with technological advancements in the digital age, which criminals also seek to exploit. Ease of international travel also makes border management even more important.

The public safety and security market value is estimated to grow from some USD 220 billion in 2015 to approximately USD 370 billion by 2020.

Through its Global Complex for Innovation (IGCI) in Singapore, INTERPOL provides proactive research into new areas and latest training techniques, equipping law enforcement agencies with the global policing capabilities and knowledge to confront sophisticated challenges.

In this respect, INTERPOL World, provides a platform for law enforcement, government bodies, academia, international security professionals as well as solution



providers and manufacturers to share insights and learn from one another.

Through a high-level, strategic thought-leadership approach, the INTERPOL World 2017 Congress will address the future landscape of security and protection against emerging crimes.

The Congress will engage some 500 international delegates in stimulating dialogues on safe cities solutions, biometrics, cybersecurity, Internet of Things (IoT), big data analytics, unmanned systems, drones, robotics and artificial intelligence, and genetics and synthetic biology.

Alongside the Congress, a three-day trade exhibition will provide a sourcing ground for government agencies and private sectors to stay abreast of the latest solutions for public security.

“The strong showing at INTERPOL World 2015 reaffirmed the interest of all stakeholders to keep up with the evolving security landscape and its complex challenges. The 2017 event will provide a timely response to their needs and to the security challenges of tomorrow,” said Mr Noboru Nakatani, Executive Director of the INTERPOL Global Complex for Innovation.

The INTERPOL World exhibition in 2017 is expected to gather 300 international manufacturers and solutions providers, in addition to 10,000 visitors from law enforcement agencies, government departments and the commercial sector.

For more information, please visit:
www.interpol-world.com. SST





Bosch Security Systems showcase the latest security and safety solutions at The Factory, Ho Chi Minh

Bosch Security Systems, a leading global supplier of security, safety, communications products and systems held a Security Solutions Seminar on June 9 at The Factory in Ho Chi Minh. The event attracted almost 200 professionals from the industrial and transportation sectors, commercial building and even final-year students from universities.

The seminar comprised of interesting discussions on the common concerns of protecting people and assets with Bosch's connected solutions based on the Digital Public Address and Voice Evacuation System (PAVIRO and Praesideo) with video-based fire detection AVIOTEC and BVMS 6.5. The event created a platform for participants from various industries to meet, learn and experience a wide range of security solutions, safety & communications technology and products from Bosch Security - through a sound presentation and live demonstration conducted by Bosch product specialists. Both Bosch's latest video-based fire detection solution AVIOTEC and the Bosch Video Management System 6.5 (BVMS 6.5) offer extended functionality with facial recognition and license plate capture technology. They were the central focus of the event due to their ability to offer precise and quick risk prevention, which prevents loss.

"As entrepreneurs seek ways to expand their business, the security and safety status is considered their top priority in order to improve surveillance, detection



and response capability- which in turn, protects their assets and prevents human loss," said Mr. Terence Ng, General Manager, Bosch Security Systems (Vietnam, Cambodia and Myanmar). "Through this event, we strive to help participants, regardless of whether they come from SMEs or MNCs, to be equipped with the knowledge of how Bosch's extensive security domains can be seamlessly integrated into one single platform to create a safe and easy-to-manage environment where risks are minimized."

Additionally, in the interactive seminars with Bosch's specialists and detailed live demonstration, final-year students of related majors were given the opportunity to learn about Bosch's cutting-edge security, safety technology and about security solutions' application in different market segments. Pham Ho Le Nguyen, final-year student of IT major, University of Information Technology, shared: "I am thrilled to be able to join this event as I have learnt that what I am taught can be practically applied in various aspects of the economy, which inspires us even more to learn and research ways to turn theories into reality to help secure the world."

Furthermore, Bosch Security Certified Partner (BSCP) Applied Informatics and Commerce Co., Ltd. (AIC HCM), An Phat Technology Development and Trading Co., Ltd. (An Phat), and Sinh Minh Trading Electronics Co., Ltd. (Sinh Minh) offered a one-on-one consultancy session to address the participants' project requirements. "We would like to give our best regards to Bosch Security Systems in Vietnam, an important and trusted partner to us, for their continuous support and we look forward to further strengthening our partnership for many years to come".

For more information, please visit: www.boschsecurity.asia. **SS**



Surveon Secure Taipei City Hospital with Upgrading Surveillance System



New Taipei City, Taiwan -Surveon is pleased to announce Taipei City Hospital has adopted Surveon's network cameras and NVR as their partner for surveillance application. With Surveon's end-to-end product lineup, including high-resolution cameras and enterprise hardware RAID megapixel recorders, Taipei City Hospital can effectively track every corner at any time to ensure the security of this medical environment.

Combined with 10 municipal hospitals in Taipei, Taipei City Hospital is the largest medical organization in Northern Taiwan aiming to rebuild the public health system and provide full services for people with healthcare needs. As incidents like patient fights or disputes among the staff, patients and their families often take place in the emergency room; the surveillance videos have become important to provide crucial evidence to unveil the truth during investigation. However, the traditional CCTV system deployed by Taipei City Hospital failed to provide images in high resolution as well as perform long-time recording due to the lack of storage capacity. In order to protect the reputation and staff of the hospital, the hospital needed to seek a better surveillance system to clear the issues when conflicts happen. To meet the demands from the customer, Surveon provided an upgraded surveillance system.

Surveon's much-coveted products include the compact dome camera CAM1320S2 that comes with 2-axis support, providing wider coverage while not being too obtrusive for the patients. Similarly, the indoor dome CAM4311S2 with audio in/out with phone jacks supports recording in the hospital vicinity and effectively manages the conflicts or disputes occurred in the emergency room. Both models provide 2D/3D noise reduction and ensure clear images under different lighting conditions. However, it was the Surveon NVR3308, supporting up to 64-channel 5-megapixel recording with Linux RAID that was eventually chosen for its overall system reliability and stability. The large capacity with storage expansion to iSCSI was an ideal option to meet the hospital's demand on 180-day non-stopping recording stints and longer video retention period.

"Surveon's solutions' performance and image quality have enhanced our efficiency in surveillance management. The running applications are reliable and we are satisfied with the outcome from Surveon." said the Managing Director for the surveillance deployment in Taipei City Hospital.

Surveon is dedicated to offering a variety of end-to-end video surveillance solutions catering to different vertical applications, giving partners reliable options for their projects.

For more information, please visit: www.surveon.com. SST



Surveon Announced Upgraded VMS to Enhance Surveillance Applications

New Taipei City, Taiwan- Surveon Technology, the end-to-end IP surveillance solution provider, today announced the latest version of NVR EC 3.3 and EC 4.0, along with its central management software Surveon Control Center (SCC) 2.7. SurveOne Phase 1.2 will be released by the end of this month. Some advanced features like live view object tracking, fisheye auto tracking and failover solution are expected to not only enhance the efficiency of monitoring but also provide a more cost-efficient solution for most advanced applications.

Being the enterprise-level VMS, the newest NVR EC 3.3 adds advanced tracking functionalities during live view, helping users to easily trace the moving object's route and keep an eye out for any suspicious movement. The auto-tracking feature in the fisheye camera allows it to work as a PTZ camera, making the panoramic surveillance more effective for tracking suspicious objects in time. Moreover, with its Windows Active Directory (LDAP), users can log in with Windows' Account Domain without creating a new account on NVR and enjoy the efficiency of managing a large-scale security system.

Meanwhile, in response to the increasing demand for zero data loss in recording constantly, Surveon further introduced the failover solution in EC 4.0 version, allowing failover NVR to be able to work normally and only use failover licenses to take over recording from the failed NVR when needed, making it perfectly suitable for mission-critical applications like banking surveillance.

The Surveon Control Center (SCC), a powerful add-on suite for advanced security projects, provides more user-friendly functions in the version 2.7, including supporting windows 10 operation system, 64-bit computing, pre-loaded SurveOne, and display UPS status, helping to facilitate the running of the central management system. Last but not least, Surveon's web-based easy system management tool SurveOne will start to support batch upgrades for multiple Surveon cameras through USB.

Users can download the firmware to USB and select the upgrade types based on their own preferences. SurveOne phase1.2 also allows users to revise all the settings and IP of the cameras, allowing system integrators to manage the system in a time and cost-efficient manner.

As a NVR expert in surveillance system, Surveon has been making great efforts to design the best video management software to improve flexibility, scalability, and interoperability, enabling integrators to manage megapixel projects easier- operation and maintenance wise.

For more information about Surveon VMS update, please visit www.surveon.com. SST





Bosch Security Systems at the “Green materials for Green construction” Seminar

Conducted by the Vietnam Association for Building Materials at Vietbuild Construction International Exhibition

Bosch Security Systems, a leading global supplier of security, safety, and communications products and systems, recently participated in the “Green Materials for Green Construction” seminar organized by the Vietnam Association for Building Materials in the Vietbuild Construction International Exhibition. The seminar which took place at the Saigon Exhibition and Convention Center (SECC) in Ho Chi Minh City, attracted nearly a 100 professionals and investors from Public Authorities (Ministry of Construction, Department of Construction in Ho Chi Minh City) and private enterprises, as well as end-users.

Bosch Security Systems’ representatives included Mr. Terence Ng, General Manager, Bosch Security Systems (Vietnam, Cambodia and Myanmar) and Mr. Nguyen Huu Thinh, Senior Sales Engineer (Fire Alarm Systems).

During the the energy conservation with building security and safety session, Thinh introduced the latest state-of-the-art IP solution which interfaces Fire Alarm and Public Address (Praesideo) systems. The introduced system can be interfaced easily as only one cable connection is required without having to install complex cabling. Conversely, the conventional system with multi-cable connections is not so easily interfaced. The new system increases time and cost savings during installation and wiring. The system is also designed to be future-proof.

The new Bosch Fire Monitoring System that supports up to 5,000 detection points makes operations and management easy. In case of emergencies, an automatic or manual zoom into sub-maps of interest is possible. The system monitors the actual situation and facilitates fast warning as well as phased evacuation in large building complexes.

Mr. Terence Ng shared: “Inventing modern technology and products help us to work better and improve our life. At Bosch Security Systems, we always strive to create solutions that are energy-efficient and cost effective. This seminar will enable attendees to understand more about how Bosch can enhance the quality of life with security, safety and communications solutions that are both innovative and beneficial to people and the environment.”

Hosted by the Vietnam Association for Building Materials, the “Green Materials for Green Construction” seminar aims to provide participants with information on effective, sustainable and environmentally friendly solutions in constructing and managing facilities.

For more information, please visit: www.boschsecurity.asia. **EST**





Dahua Full Range of Smart Thermal Network Camera Integrates with Milestone XProtect VMS

Dahua Technology, a world-leading video surveillance solution provider headquartered in Hangzhou, China announced that all range of new smart thermal network cameras are integrated with the Milestone XProtect Video Management Software.

All Dahua smart thermal network camera series have adopted top-notch sensors that make them capable of detecting tiny differences in temperature. This enables them to achieve higher detection accuracy and operate in complete darkness even in adverse weather conditions.

Furthermore, the cameras combine intelligence, efficiency and high performance in smart detection, smart analysis, smart perception, smart tracking and smart control.

The thermal network cameras that are able to integrate with Milestone XProtect Video Management Software include thermal hybrid PTZ camera, hybrid speed dome camera, thermal bullet camera and thermal dome camera.

Presently, Milestone is already compatible with Dahua's full range of products -IPC, PTZ and HCVR as well as part of NVR. Looking forward, Dahua plans to devote itself to being compatible with Milestone XProtect Video Management Software for its increasing variety of products and deeper integration.

For more information, please visit: www.dahuasecurity.com. **SST**



Grand Comeback of Secutech Vietnam in Hanoi

Secutech Vietnam will come back this year from 21st to 24th September at Friendship Cultural Palace, Hanoi, Vietnam. Organized by Messe Frankfurt New Era Business Media, the annual show is widely recognized as Vietnam's leading trade fair for the security, smart home, and fire & safety industry.

In response to visitor requests, the trade shows this year will be prolonged to four days and is expected to attract more than 10,000 trade buyers worldwide on an increased scale of 50% up from the year before.

Striding into the 9th edition, Secutech Vietnam gathers over 150 exhibitors to feature four themed areas: Security, Fire & Safety, Smart Home and Electric and Automation. It will distinctively present Korean, Taiwan, and UL's Pavilion occupying 6,500sqm of the exhibition area. Registered brands include Dahua Technology, Hikvision Digital Technology, HI SHARP Electronics, HOCHIKI, KTN, Merit LILIN, Phuc Binh, Rapidrop, Silver Sea, Takumi Safety, Techpro, Vantech and Western Digital to name but a few.

Global Digital Security & Solutions Forum (GDSF) Vietnam Reveals Trend-setting Solutions

To cope with the escalating demand for integrated solutions from the industry, Global Digital Security & Solutions Forum (GDSF) Vietnam will be held on 22nd September- which is the second day of the show-at Hall B in the show venue. The GDSF Vietnam this year has set the topics on "Trend-setting Solutions in the Upcoming Security World", focusing on surveillance storage solutions, redefining CCTV into intelligent systems with video analysis, smart video for smart cities, and integrated HD surveillance for industrial zones.

Exclusively Present Fire & Safety Seminar

Additionally, to celebrate the 55th anniversary of the General Department of Fire Prevention & Rescue and the 15th anniversary of Fire Prevention Day, Secutech Vietnam exclusively presents a Fire & Safety Seminar co-organized by the Ministry of Public Security as well as the

continue on page 28



7th International exhibition of homeland security

Incorporating
GLOBAL SECURITY ASIA



Solutions, Technologies and
Innovations for Homeland Security
In Asia-Pacific



04 > 06
APRIL 2017
SANDS EXPO
SINGAPORE   



Vietnam Fire and Rescue Police Department. It features global security trends, solutions, and applications for industrial factories and high-rise buildings.

Ms Regina Tsai, Deputy General Manager of Messe Frankfurt New Era Business Media, commented on the trade fair this year saying, “It has been a great honour to work with the Ministry of Public Security at the 9th edition of Secutech Vietnam and jointly celebrate the 55th anniversary of the General Department of Fire Prevention & Rescue.”

“With around 150 exhibitors from 10 countries such as Australia, Japan, Korea, Singapore, Thailand and so on, we expect to welcome more than 10,000 visitors in

Hanoi this year”, Ms Tsai added.

Fire & Safety Topics include:

- Safety in industrial factory zones
- New trends of high-rise buildings
- Current situation of the fire & safety industry in Vietnam
- Development of fire & safety equipment and technology in Taiwan
- The new application/trend for global fire & safety
- Latest fire & safety certification by law
- Fire & safety application and expectation in different projects

For more information, please visit:
www.messefrankfurt.com. *SSF*

Honeywell Announces the Second Edition of the Honeywell Smart Building Awards

Honeywell has announced the second edition of the Honeywell Smart Building Awards in India, calling for entries from across the country. It has partnered with the Network 18 Group (media partner) and KPMG (process validators and evaluators) to launch the Network 18 & Honeywell Smart Building Awards 2016.

Participation in the competition is open to all building owners and facility managers across India who agree to be evaluated under the parameters of the Honeywell Smart Building Score™, a global building assessment framework. Participants will take a self-assessment of 15 technology asset groups that make a building green, safe, and productive, based on their building systems’ overall capability, coverage of the facility and uptime. The scores will be validated by KPMG and affirmed by an eminent jury composed of India’s leading authorities on energy efficiency, safety, security, and productivity in buildings.

Honeywell successfully launched the Honeywell Smart Building Score™ in India in June 2015, a first-of-its-kind global tool to measure a building’s smartness. The tool was subsequently launched in six countries across the United States, China and the Middle East. Among the tool’s measures:

- **Green asset group**
Measures the environmentally sustainable components of a building. It includes a building’s use of energy sources, utility sources, temperature control, energy control, and utility control, all of which impact carbon emissions, a facility’s environmental footprint, and utility costs for the building occupant or user.
- **Safe asset group**
Measures the safeguards for the building, its occupants, users and owners. It includes people, vehicle and material security, fire safety, gas safety, worker safety, and disaster response systems.
- **Productive asset group**
Measures enhanced comfort and productivity for users and owners. It includes technologies that help boost productivity include indoor air and water quality sensors, people, vehicle and material circulation, personalization, connectivity, and energy quality.

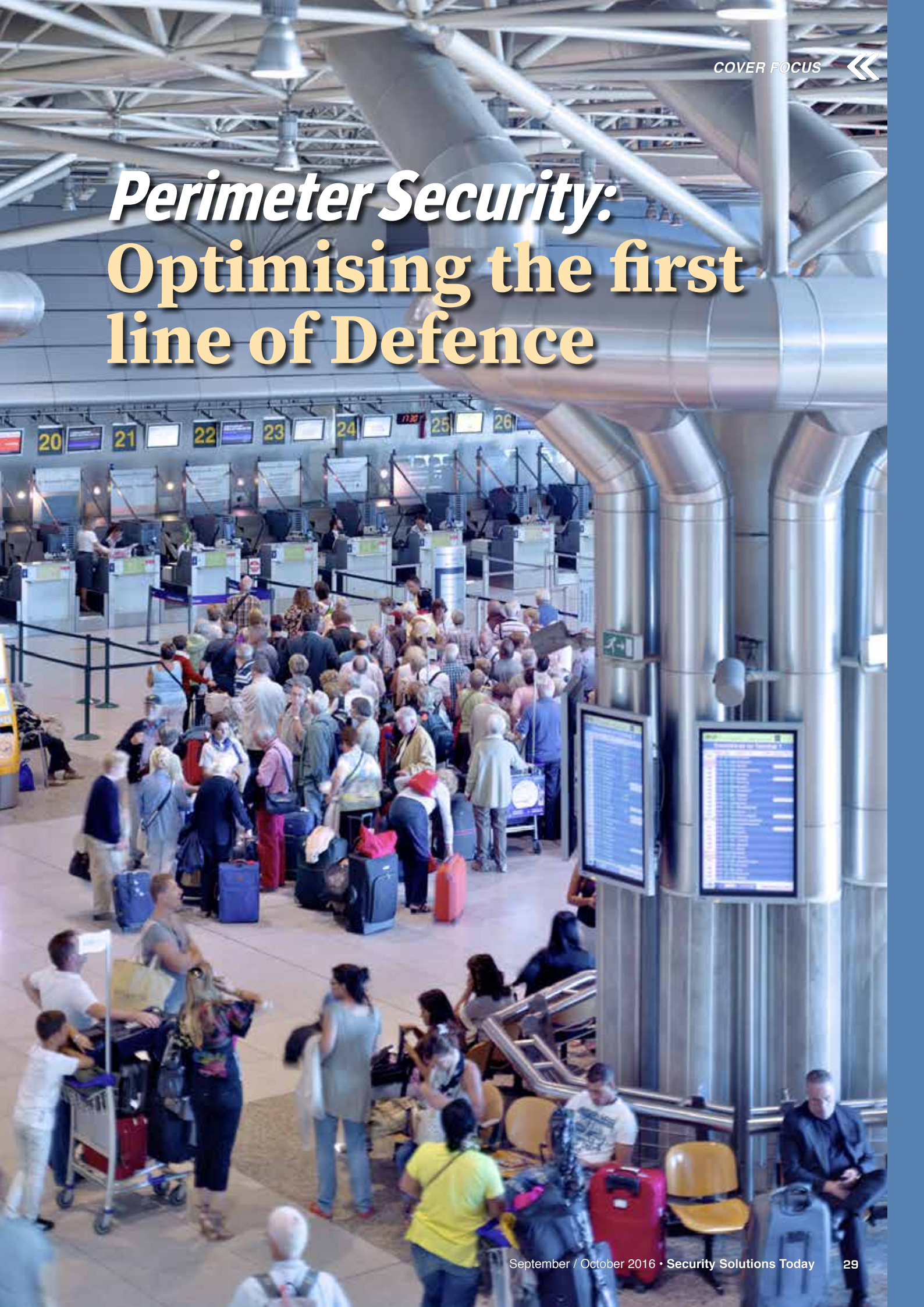


Honeywell is uniquely positioned with the broadest technology solutions portfolio that serve buildings to support India’s 100 Smart Cities vision, and is already working on several significant projects, including Bhubaneshwar in Odisha, Aurangabad in Maharashtra, Ujjain in Madhya Pradesh, and an 11-city project in a large central state.

For more information on Honeywell India, please visit <https://honeywell.com/country/in/>. *SSF*



Perimeter Security: Optimising the first line of Defence





With global passenger and cargo volumes on an upward trend, today's airport operators are increasingly faced with challenges in ensuring the safety and security of the airport environment. Particularly, perimeter security has been in the spotlight given recent high profile breaches that have been widely reported by the world's media.

Photos credit: Siemens



By Thomas Riffel, Head Europe Vertical Markets, Siemens Building Technologies

The implementation of any comprehensive security policy usually involves a multi-layered approach with the first line of defense being the surrounding airport perimeter. Perimeter security breaches not only pose an immediate threat to operations as well as passenger and airport asset security and safety, but also have the potential to damage an airport's reputation in today's competitive market. These breaches compromise the trust and confidence that their business partners and customers have.

The current sophisticated solutions for effective perimeter security detection include, amongst others, long-range, thermal-imaging surveillance cameras, false alarm resilient presence and motion-detection sensors, as well as ground-radar detection and tracking. Once deployed, these external detection systems can be operated through intelligent management platforms to automatically qualify and identify unauthorized attempted access well beyond the airport boundary and contain a potential risk before it poses a threat to operations and assets.

The benefits associated with the live tracking of qualified objects, vehicles and people via video analytics have also assisted airport operators to effectively manage all ground activity in a typically busy and dynamic environment. All movement and activity is automatically mapped against planned and authorized routes with real time integration

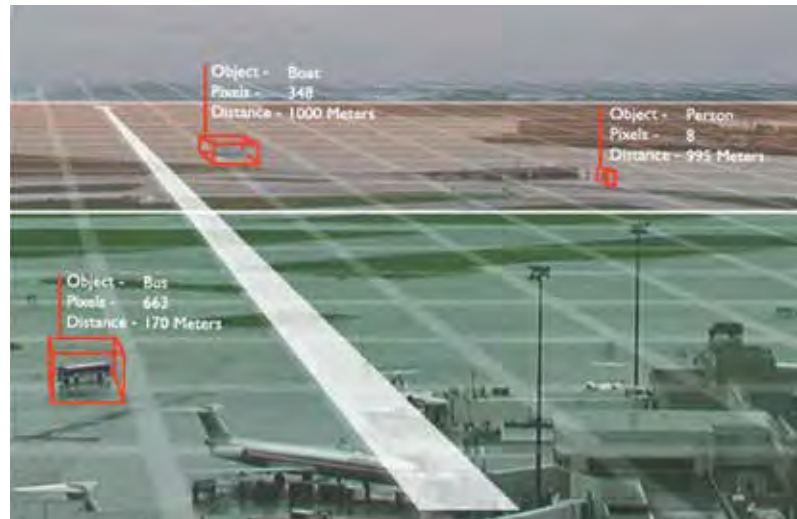


of other airport databases. This facilitates the alerting of airport security operators and enables them to react to abnormal events and suspicious behavior aided by pre-defined and approved workflows. Today's large-scale surveillance solutions filter critical events from camera and other sensor input, graphically displaying results via a comprehensive digital map on a single screen. Integrated three-dimensional analytics determine particular object attributes, supporting operators in pre-qualified classification of all activity and incidents. Using intelligent policy zones and virtual barriers, these systems detect, track, and classify activity, enabling operators to see what is happening throughout the whole area in real time.

Protection of the apron

The airport apron, where aircraft are parked, loaded, unloaded and refueled, is an extremely high-risk and sensitive area. To counter the threat of unauthorised access, state-of-the-art video systems with intelligent algorithms are being implemented to track objects and persons, and to interpret and define routine aircraft servicing operations while parked within the apron area. These solutions facilitate the immediate detection of extraordinary activities and maintain a constant state of vigilance, ensuring the security of aircraft and associated assets.

Current solutions available to airport operators make use of surveillance cameras to create virtual barriers or zones, around fences, buildings or areas within the apron, that trigger automatic alerts when unauthorised activity occurs. Images from cameras covering the area are automatically displayed to the operator, tracking and classifying activity in real time.



Operators simply view one graphical display of the entire apron area showing all the necessary information. When an incident occurs, the exact location is pinpointed and the fast and efficient deployment of security personnel or suitable resources facilitated.

Meeting the challenge with the right partner

The majority of international airports have evolved over a lengthy period of time and generally comprise a host of different operational systems and processes, with safety and security a fundamental part of the equation. There is also baggage and cargo, airfield lighting, building technology and energy management systems to name but a few. Throughout its lifecycle, the management of this often disparate and ageing infrastructure requires a host of different and isolated resources.

Only a limited number of security solution providers can offer a bespoke airport portfolio, the necessary knowledge, global reach and project experience required to meet the demands of today's airports. Fewer yet are fully able to deliver integrated airport projects, supporting clients through technical design and specification, project management, training and long-term service and support.

Such organizations need to understand airports in order to provide viable, long-term solutions. Through specially designed concepts and innovative solutions, increased security and convenience for passengers and airport personnel can be provided along with optimized passenger and freight processes. Experienced and skilled project teams can help to specify, design, install and maintain new systems and upgrade existing installations.

Modern airport security is a complex and dynamic subject, but, with the support of the right security solution provider, an effective solution is more accessible than ever.

For more information, please visit:
www.siemens.com/buildingtechnologies. SST



Deploying Perimeter Intrusion Detection Systems (PIDS) at Airports

The operational environment at airfields and airports for outdoor perimeter security systems is very extreme. Aside from very extreme weather conditions (wind, snow, ice etc.), at many airports there are Electro Magnetic Interference (EMI), Radio Frequency Interference (RFI) and vibrations caused by airplane engines, trucks, vehicles and other equipment. There are not many outdoor perimeter security sensors that can operate 24/7 in this challenging environment while simultaneously providing a very high Probability of Detection (POD) and operating at very low Nuisance and False Alarm Rates (NAR / FAR). In many cases no single perimeter security system / technology is optimal for the entire perimeter of an airport. The perimeter security systems deployed along the perimeter of an airport need to be tailored to specific sections of the airports perimeter (runways, adjacent to the terminals, shore line etc.).

The Sensor Coil Perimeter Intrusion Detection System, the VTW Electronic Taut Wire Fence System (ETWFS) and the WaveGuard Radio Frequency (RF) Buried PIDS are optimal PIDS for the perimeter of airfields and airports. These PIDS can operate in extreme environments, at very high POD rates in conjunction with very low Nuisance and False alarm rates. They can be easily integrated with the airports CCTV system, Thermal camera system, Command and Control System etc.





The Sensor Coil PIDS and the VTW ETWFS provide the basic elements required of a PIDS-Deterrence, Detection and Delay.

The Sensor Coil PIDS is particularly optimal for areas where the visual aesthetics of the PIDS is not a crucial factor and a major deterrence factor is desired such as in fuel farms and in remote areas of the perimeter. The Sensor Coil PIDS can be easily installed on perimeter fences and walls.

The VTW ETWFS can be installed on existing fences, as a topper on fences or as a “stand alone” PIDS. The VTW ETWFS is optimal for long perimeters where very low Nuisance Alarm Rates are crucial due to the compounding factor of a long perimeter. The detection technology (strain gage sensors in a Whetstone bridge) is essentially immune to vibrations caused by airplanes, vehicles etc.



The WaveGuard RF buried PIDS is optimal for areas where the appearance factor is very important. This PIDS is thus, typically buried in the ground and is commonly used at runways where high fences are not permitted. The WaveGuard RF buried PIDS provides highly reliable covert detection.



For more information, please visit: www.detekion.com. *EST*



Infinity 2020 Fence Mounted Intrusion Detection

Major airports do not lightly select the technologies to implement when securing their perimeters. A thorough evaluation process is usually conducted, whereby test beds are installed for competing vendors to prove their products' suitability.

Integrated Security Corporation's (ISC) Infinity 2020 fence mounted intrusion detection has been through these tests for several major metropolitan area transportation authorities and won every time. Infinity 2020 is now in operation at many major airports including four of the busiest in the United States.



Certain critical considerations that play a pivotal role in ISC's selection over competing systems are probability of detection, low occurrence of nuisance/false alarms, reliability under adverse weather conditions, integration with other systems, and of course affordability.

ISC's experience supports at least 98% of the probability of detection. This percentage is the highest in the industry for comparable systems, and meets the exacting requirements of the aviation security industry.

Furthermore, Infinity 2020's nuisance/false alarm rate (NAR/FAR) is unsurpassed. Customers have vouched for it and said that unless they test the fence, they are not sure it is still operating because they never have to respond to NAR/FARs.

A major source of NAR/FARs for perimeter systems is wind-induced fence movement. Infinity 2020 incorporates a weather station that reports wind conditions to a controller in real time. The controller in turn constantly adjusts system parameters to compensate. Infinity's track record of eliminating wind-induced NAR/FARs is well known. Regardless of location, Infinity systems are up to the task.



Many perimeter systems fail in adverse weather conditions as weather extremities worsen most systems' performance. However, Infinity 2020 systems are rated down to -40 Celsius. Despite harsh rains and heat, Infinity systems have been operating well for years in the rainy Caribbean and in the American southwest desert.

Client sites in Canada and the northernmost American state Alaska also boast of Infinity perimeter security systems' weather durability.

Infinity 2020 also fits well into larger systems with multiple



technologies working together. Its electronics are Internet Protocol (IP) addressable. Fiber or Ethernet transceivers are built in to enable easy connection to networks. An integrated web server whose programming is based on Microsoft .NET technology allows parameter setting via Web browser and allows checks on the overall health of the system.

Form C relay contacts forward alarms to any device, typically an alarm panel, which will accept them. The software running on a network connected computer records alarm events and provides a record of activity at the perimeter.

Pricing is an important factor when choosing perimeter security systems. Most potential users of a security system focus first on the upfront cost of the system. The hardware and software cost is only one of three important considerations. The second is the cost of installation itself. Infinity 2020 systems enjoy a major advantage over most competitors because they do not require power for their sensors. At an airport, a set of electronics is placed every 4,000 - 5,000 feet and those systems require only a power source. Solar power will work if A/C power is not readily available. Infinity 2020 also works on both swing and slide gates, which is an added savings compared to typically used microwave or active infrared sensors across gate openings.

Finally, there is annual cost of maintaining the perimeter system, and Infinity really excels at adding value in this regard. The system never needs to be recalibrated after storm activity because the sensors contain no electronics. Systems that were installed over twenty years ago are still in use. When one factors in the truly remarkable longevity of Infinity systems, their lifetime cost of ownership is very low compared to competitors.

For more information, please visit: www.integratedsecuritycorp.com. SST

Delivering peace of mind around the world.

More and more customers everywhere let us know every day how much they appreciate the work we do to help them protect, control and track their keys. We invented key management, and we just keep making it better for you.

Visit morsewatchmans.com to learn more



Product door not shown in image. Fingerprint reader optional.



Overcoming the limitations of traditional perimeter surveillance

With security risks surrounding air travel at the forefront of many people's minds, a recent incursion at Heathrow airport in March of this year highlights the issues surrounding traditional perimeter security solutions on the market. An intruder managed not only to break through perimeter security at one of the world's largest international hubs, but was then able to move around the airfield undetected and climb aboard a parked plane. It was not until the intruder was inside the plane that security became aware of the incursion, by which point the man was able to lock himself into the anti-terrorist cockpit. This incident highlighted the difficulties in securing airfields, and the need to track intruders throughout the airfield once a breach has taken place.

Commercial airports are typically vast sites, expensive to run and difficult to secure. Each area of an airfield poses a unique risk and has varying levels of security needs, which can often be costly and complex to manage. Navtech Radar's AdvanceGuard™ wide area security system seeks to overcome many of the challenges involved in protecting such sites by providing a comprehensive, intelligent security system that



delivers total situational awareness throughout the whole airfield. The system consists of a number of high resolution radar sensors positioned around the airfield to provide complete coverage of all sensitive areas. All activities across the airfield are tracked and processed by Navtech's sophisticated Witness™ software. Each sensor continuously scans the area every second, and if an intruder is detected within any designated no-access zones, an alert will be sounded and the closest camera automatically guided

to the perpetrator, to provide security personnel with a visual confirmation. Detection zones can be both inside and outside of the perimeter, and each zone can be programmed so that the system responds to different types of activities.

In doing so, AdvanceGuard is able to overcome many of the limitations of traditional perimeter security technology such as fence mounted sensors or buried cable perimeter detection systems. As

<http://www.telegraph.co.uk/news/uknews/12185284/Major-alert-at-Heathrow-after-man-locks-self-in-jet-cockpit.html>



illustrated by the Heathrow incident, the perpetrator was able to breach the perimeter undetected, and was then able to roam freely across the site, totally undetected. Navtech's AdvanceGuard™ system is a solution that addresses such lapses in security. The system can be configured to provide an early warning alarm as the intruder approaches the perimeter; a more severe alarm once the intruder has broken through the perimeter, and then will continue to track the intruder until he has been captured, all the time aiding the security services by providing real-time location and activity information .

Navtech's sophisticated Witness software keeps a database of all alarms that are generated. Intruder location and accompanying video information can also be stored and reviewed after the incident , allowing detailed post-mortem analysis of all incidents. For example, an intruder may enter the site, deposit a package in a hidden location and then leave the site again. In this case the AdvanceGuard system would issue an alarm, and log exact location information and video throughout the incident. This can be reviewed immediately after the incident to determine where the package is located. The software enables complete Situational Awareness displaying all information on an easy to use Graphical User Interface (GUI).

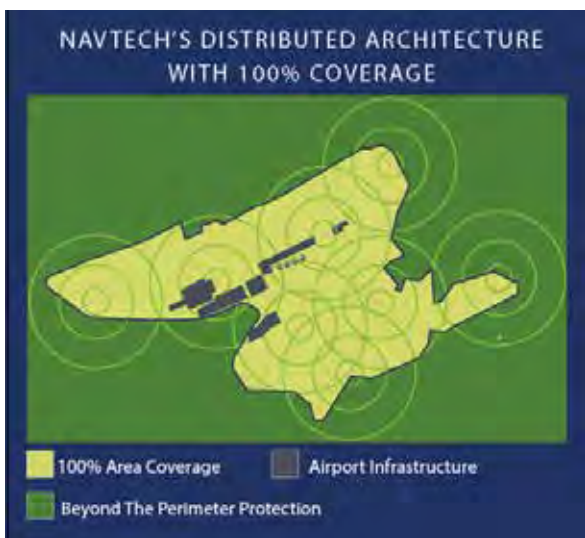


Over the span of the last 16 years, Navtech Radar's high definition radars have been installed in more than 40 countries, including 20 airports worldwide, to detect and track objects in critical locations. The patented and innovative technology is designed and manufactured in our ISO 9001 certified facilities to ensure the highest standards of quality and service.

The most recent addition to the AdvanceGuard system is the option of Friend or Foe differentiation. Authorised personnel across the site can be fitted with trackers, which synchronise with the Witness software and eliminates alarms generated by authorised personnel or vehicles, ensuring that any alarms raised are for genuine intruders only. This can significantly reduce the workload of operators in environments where authorised personnel regularly go into alarm zones. The balance between technology and manned security guarding can be rebalanced, through removing the need of security staff having to continuously monitor video screens.

With virtually no limit to the complexity of the rules that can be applied to the software, a level of pseudo-intelligent monitoring can be introduced which closely mimics a human observer. While video analytics may appear to be able to do many of the same things, in practice it has limited coverage, does not have accurate speed, direction and location information, and is affected by changes in weather lighting, or environmental conditions. The nature of radar sets it apart from optical solutions since rain, fog, smoke and dust have very little effect on the sensor's ability to perform, allowing for reliable detection 24/7.

For more information, please visit:
www.navtechradar.com. SST





Reliable, Covert, Real-Time Protection with DAS Fiber Optic Monitoring

Perimeter Security is your first line of defense. The OptaSense Perimeter Intrusion Detection and Security (PIDS) system safeguards your infrastructure and assets using advanced distributed acoustic sensing (DAS) technology capable of identifying and locating multiple threats in real time, with point-locating capabilities to 10m.

As part of a security program, OptaSense DAS technology detects, classifies and precisely locates a number of activities, including people, vehicle movement, low flying aircrafts, manual and mechanical digging, gunfire and many others.

Unlike conventional buried sensors, the PIDS system significantly reduces nuisance alarms using reliable algorithms that decipher and classify the type of intrusion. Users can be notified of alarms via text or email, and by leveraging GPS coordinates, the system can pinpoint the exact location of a security breach within seconds. With this insight, asset owners can increase the effectiveness of response mechanisms, such as patrols and helicopter reconnaissance, by ensuring that manual inspection is focused on areas of real activity.

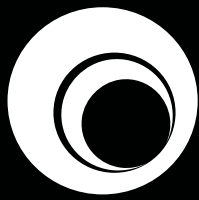
In addition to providing continuous coverage, the PIDS system can be customised to meet the demands of the perimeter it is protecting. It offers three types of installation: fence, buried or hybrid. A hybrid installation provides additional design flexibility and added security on fence, buried and hybrid systems, as well as some water applications utilizing the same processor. The system can also be run in stealth mode for high security areas.

Installation is a simple process. After having the fiber buried or attached to a fence using a third-party, our experts are at your service to install the required hardware and calibrate the system to its environment. No certification is required for installation, and no hardware or power is required in the field. All electronics are indoors in a controlled environment—protecting equipment from EMI, RFI and other hazardous environmental conditions. The system is software based, allowing easy alterations to perimeter adjustments and/or changes to the number of zones being monitored. The system is also easily integrated into other systems and sensors, such as CCTV and C2, for a more robust security management solution.

OptaSense DAS technology is protecting some of the world's most valuable assets. In critical infrastructure and security sectors, it is providing real-time monitoring of long assets, such as pipelines and borders. In fact, we are currently monitoring more than 15,000 km of critical infrastructure by providing leak detection and third party intrusion detection for pipeline and transport networks. The PIDS system has also proven valuable protecting critical assets in other market sectors, including utilities, industrial, transportation, commercial and residential sectors.

For more information, please visit: www.optasense.com. SST





IFSEC India

SECURING PEOPLE, PROPERTY & ASSETS
A UBM Event

8-10 December 2016
Pragati Maidan, New Delhi



If it's a security trend.

We make it your business opportunity.



SMARTER STORAGE
ACCESS CONTROL
BIOMETRICS

SAFE CITIES SMARTER STORAGE HOME AUTOMATION
HD CCTV RESIDENTIAL IOT APPLICATION HOMELAND SECURITY
SMARTER STORAGE 4K DISPLAY PERIMETER SECURITY

- ♥ Video surveillance is switching off from SD and switching over to HD CCTV and network equipment
- ♥ Aggressive pricing is adding more teeth to every competitors bite
- ♥ Supply bases are seeing the biggest consolidation trends in recent times
- ♥ IHS is forecasting that the world market for Video Surveillance equipment will grow 7% in 2016

2016 is likely to see the continuation of several long-term trends in the video surveillance market.

It's time you get a platform to convert these market trends into the biggest growth opportunities for your security business.

Get ready be a part of the 10th edition of South Asia's Largest Security, Civil Protection & Fire Safety Event.

CONTACT:

Agnius Kazlauskas | M: +44 (0) 79662 22505 | E: agnius.kazlauskas@ubm.com
Prashant Bahl | M: +91 98331 10372 | E: prashant.bahl@ubm.com

Bookings Open



Supporting Association





Panomera® from Dallmeier ensures enhanced security at Naples Airport

The international airport at Naples, Napoli Capodichino Airport, is used by 6 million travellers every year. With the introduction of the Panomera® multifocal sensor system from Dallmeier, security in both the apron and the airport forecourt areas is enhanced further still by the very latest in camera technology.

Napoli Capodichino offers direct connections to 50 domestic and international destinations. It is managed by GESAC SPA, a member of the F2I Airports Group, an airport management company known for the excellent quality of its services and for its culture of continuous improvement. GESAC works constantly to find efficient solutions to satisfy the requirements of its passengers and field operators, particularly with regard to personal safety and environmental protection.

Innovative multifocal sensor technology

GESAC's security engineers saw the Panomera® multifocal sensor system from Dallmeier for the first time at the "Sicurezza" trade fair in Milan in 2010, and were very impressed by the performance capabilities of the groundbreaking video technology. Unlike conventional cameras, which have a single focal lens, multifocal sensor technology is based on a multi-sensor platform with several lenses, each with different focal lengths, creating the unrivalled Panomera® effect. This innovative system provides surveillance of



large areas with extremely high resolution, all from a single installation site.

The contact at the trade fair was followed by an intensive planning and design phase, during which the staff at Dallmeier Italy worked closely with the "Infrastructure Development & Flight Operations" department of GESAC, under the direction of Alessandro Fidato. Representatives of Dallmeier Italy visited the site several times so that they could adapt the new video system precisely to the requirements of the airport management company.



Safety for apron, runways and forecourt

For GESAC, two major zones of the airport site were of paramount importance: the area in front of the airport buildings (“Panomera® Forecourt” project), and the apron and runways (“Panomera® Airfield” project).

In the airport forecourt and concourse, Panomera® monitors traffic and pedestrian flows between the multi-storey car park, Terminal 1 and the network of feeder roads and paths by which people arrive at and leave the airport, either in motor vehicles or on foot.

The customer also wanted to obtain complete coverage of the movements of all vehicles and aircraft anywhere on the entire airfield, including the ramps and aprons, taxiways, and takeoff and landing runways, so that incidents could be reconstructed if necessary, wherever they occurred on the site.

The cameras of the Panomera® system for this airfield project were installed at a considerable height, close to the roof of the APRON tower at about 13 metres; three Panomera® systems installed in a semicircle provide a panoramic view through 228°. The Panomera® Viewer workstation was located inside the APRON Tower to provide security staff with a unique and full panoramic view of the entire airfield.

“With Panomera® technology, distant objects can be captured with the same quality as those in the foreground. The extremely high resolution over the entire area of interest and intuitive operation of the system led us to choose Dallmeier”, says Giuseppe Musto, Head of Innovation & Automation Development for GESAC.



Another important difference between Panomera® and conventional PTZ cameras is that the whole area to be monitored with Panomera®, is recorded continuously, so the high resolution images enable important, single details to be examined even after the event. With PTZ cameras, the general overview image is lost while the camera is recording a detailed area.

Reliable recording

Recording is based on the Dallmeier DIS-2/M NSU blade technology – this ensures maximum availability and reliability of the recording. Each blade unit is equipped with a redundant hard disk. The units are powered via a rack for 19” slide-in modules with redundant power supply units. The rack system can accommodate up to 10 single modules, so that even relatively large systems can be installed in compact and cost-efficient manner. The modular structure of the system guarantees high availability of the overall solution.

Complete success

Alessandro Fidato, Director of the Infrastructure Development & Flight Operations department, describes the video system as a resounding success: “With these two projects, GESAC confirms its orientation towards innovative solutions that ensure high standards of security and simplify management arrangements. We are very satisfied with this cooperation.”

Pierpaolo Piracci of Dallmeier Italy responds: “I am very proud to have been personally involved in these highly innovative projects, and I would like to thank Alessandro Fidato and Giuseppe Musto of GESAC SPA for the confidence they have shown in our technology and professionalism.”

For more information, please visit:
www.dallmeier.com or
www.panomera.com. **SST**



Christchurch International Airport

Christchurch International Airport is situated on the east coast of New Zealand and receives around six million passengers and 70,000 commercial flights per year. The airport is the main gateway for New Zealand's South Island and is a busy hub for passenger and freight movement. In a legislation-driven airport environment, the airport is regulated by a number of Civil Aviation mandates and rules, which include the requirement to control and monitor all access to restricted landside and airside areas.

In selecting Gallagher for the airport's security solution, the airport company, Christchurch International Airport Limited (CIAL), found a vastly flexible system capable of withstanding extreme conditions when put to the



test in a real-life emergency.

The Gallagher System was effectively put to the test during the 2010 and 2011 Christchurch earthquakes

which caused widespread damage across the city.

Originally opened in 1959, the airport terminal has undergone a number of expansions and upgrades over time. With passenger numbers continuing to grow, a new \$237 million terminal was designed and construction began in 2009. As part of the new terminal design, CIAL took the opportunity to review its security systems and look for new and innovative solutions that afforded greater system flexibility. The airport's previous security system was both analogue and digital and presented limitations on what a non-technical staff member could do within the system.

"To make changes, for example add a door to the access control system, we had to get specialists in" said Ford Robertston, the airport's Manager of Quality and Security. "Ultimately, our wish list included a system our





own staff could configure, hardware that overcame the reliability issues we faced with cards not reading, as well as an open platform with a high degree of flexibility and reporting capabilities.”

Perimeter security

On the exterior, Gallagher’s perimeter security system provides monitored electric fencing for a small section of Christchurch Airport’s 16km fence line – which protects more than 300 hectares of land. The site’s perimeter security incorporates five vehicle auto-gates that allow authorised vehicles access to the airfield. When drivers badge their access card at an auto gate, a photo of the cardholder appears on the operator’s screen, along with competency information.

If the driver’s Civil Aviation ID, airside driving permit or another competency is due to expire, the operator is notified on screen and can advise the driver. The main auto-gate is manned 24 hours a day, seven days a week. If someone requests access at an unmanned auto-gate, their photo and competencies are channeled to the operator at the main auto-gate, reducing after hours staff and running costs.

Key industry challenges

- Complying with Civil Aviation safety and security requirements
- Operating domestic and international flights from a single terminal
- Restricting unauthorised personnel and vehicle access to airside areas

Access Control

Christchurch Airport is a multi-tenant site where several core organisations operate. A number



of these organisations - including the national carrier, Air New Zealand - operate independent Gallagher security-management platforms. Cardholder information can be enrolled between these platforms, enabling employees from each organisation to access multiple areas of the airport using a single access card. The multi-tenant functionality creates a flexible system that reduces the costs associated with issuing and managing multiple cards.

Airbridge customization

As a domestic and international airport, CIAL, Gallagher and security partner ECL Group, together developed a customisation that would enable CIAL staff to manage airbridge configuration via the security-management platform. This customisation provided the ability to move seamlessly between domestic and international airport operations.

Using 14 fully-automated and motorised airbridges and access controlled doors, airport staff use workstations to configure the system and easily transition the airport from domestic to international operations - ensuring passengers are directed to secure zones including customs and immigration when appropriate. All

doors are operated with an access card and once an area of the airport has been “sealed” for security (for example, an international departure lounge), access to these areas is automatically denied and they become accessible only via a security clearance entry way.

During the second major earthquake, the airport lost network power and the site was functioning on generator supply. The Gallagher security solution continued operating faultlessly, with controllers running on automatic battery back-up until mains communication was restored.

“The system continued doing what it was supposed to under some pretty challenging circumstances” said Ford Robertson. “It was a clear indicator to us of the fully-tested, uncompromised quality and standard of the Gallagher product”.

Acknowledgements

Gallagher wishes to acknowledge our security partner, ECL Group, whose ongoing support and involvement in the implementation of Gallagher products contributes to our successful relationship with Christchurch International Airport Limited.

For more information, please visit: security.gallagher.com. **ESST**

Regional Report:

India is set to drive the Access Control Market across Asia

By Alexander Derricott,
Market Analyst,
IHS Technology

Although the Indian market for electronic access control failed to meet prior growth expectations for 2015, the country outperformed Malaysia, Australia and other countries in the region. Economic growth in India last year was slower than predicted, due to the failure of the reformist Modi government to pass the nationwide Goods and Services Tax (GST), a depreciating yuan boosting China's competitiveness with Indian manufacturers, and general market jitters about investing in developing economies.

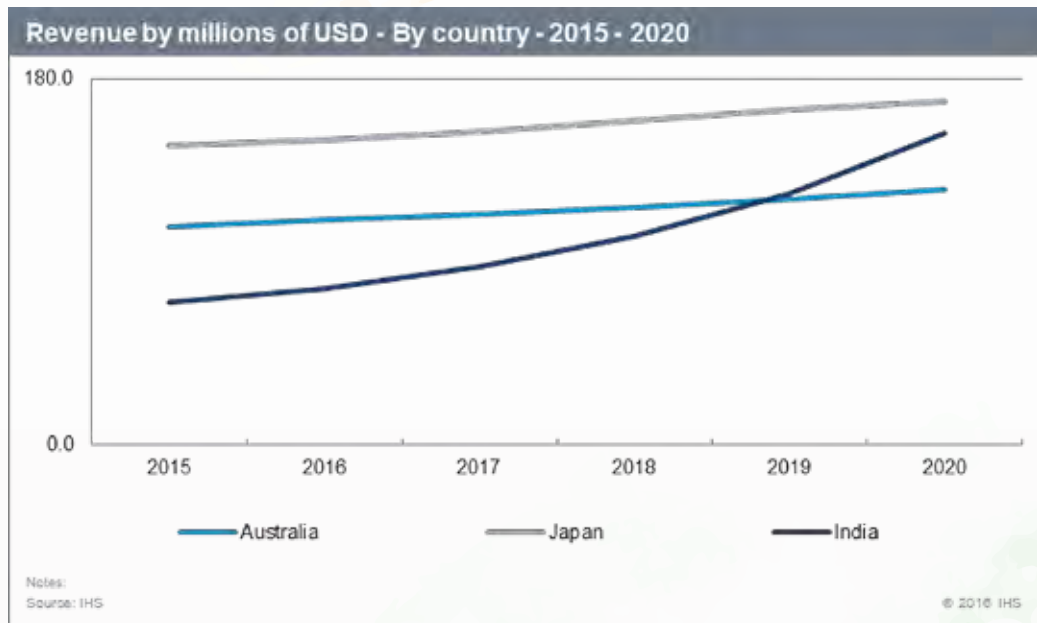
The Indian market for access control was worth \$76 million in 2015 and IHS forecasts the market to be worth \$153.8 million dollars in 2020. The market will overtake Australia to be the third-largest in the region by 2020, just behind China and Japan.

One of the core challenges for suppliers working in India are myriad of state taxes that can vary significantly from state to state. The lack of centralised tax structure has made the Indian market difficult to operate in, as it is more like a collection of 29 countries, rather a single country, which has been a big barrier to entry. According to IHS Economic Country Risk, the Indian economy is gaining momentum; however, due to the country's various structural issues, it has not been operating at full capacity. The current government has aimed to alleviate some of the issues surrounding tax and land acquisition, while also promoting Indian as a manufacturing hub.

The flagship proposal by the government is the GST, which aims to introduce a nationwide value-added tax (VAT) but with a few exemptions. The introduction of this tax will remove the difficulties and risk associated with operating across various Indian states, and it will also dramatically simplify India's Byzantine tax system. The professional taxes, state sales taxes, and local taxes – including octroi, the tax levied when goods enter a state -- will all be bundled into the GST. When the GST comes into force, companies will be able to see their tax liability on a country-wide level rather than by individual states.

The direct impact of the GST on the access control market will be twofold: Companies will find it simpler to enter the market and manage their tax exposure; and by standardising taxes, both local and foreign investment should

Designed by Freepik



become more readily available, as investors gain confidence in the Indian economy. The boost in investment is aimed to help translate the building momentum in the Indian economy into increased gross domestic product growth.

Other government policies should boost demand for access control products. The aim to develop “made-in-India” manufacturing hubs, the continued push of the IT sector, and the building of infrastructure in small and mid-sized cities across the country should all support considerable growth in the access control market. The IT customer services (ITCS) and banking sectors have long been major customers for access control products, and they now require large-scale upgrades and expansions, after being some of the first adopters in the mid-2000s.

The market is not only benefiting from the upgrade requirements, but also expansion into newer facilities. ITCS companies are still expanding their headcounts, with figures suggested to be around 15 percent to 20 percent per year. India is also starting to develop its own IT industry, rather than just focusing on customer services, so the number of data centres hosted in the country should rise rapidly from 2015 to 2020.

The Indian market is bright for the access control industry, as India is less exposed to the Chinese downturn and has actually benefited from the decline in commodity prices. Raw materials and energy costs have decreased, leading to lower cost of inputs, which could spur an expansion of its industrial base. The buoyant industrial sector will see new sites being developed and therefore greater demand for access control products. If the GST remains unchallenged in parliament, then the access control market is set to benefit from the boost in the business environment in India.

For more information, please visit:

<https://technology.ihs.com/Categories/450443/access-control-fire>. SST



Regional Report:

Honeywell Completes City Surveillance And Emergency Response Technology Project In Ujjain

Project Delivers Real-Time Safe City Monitoring for the Madhya Pradesh Police Department

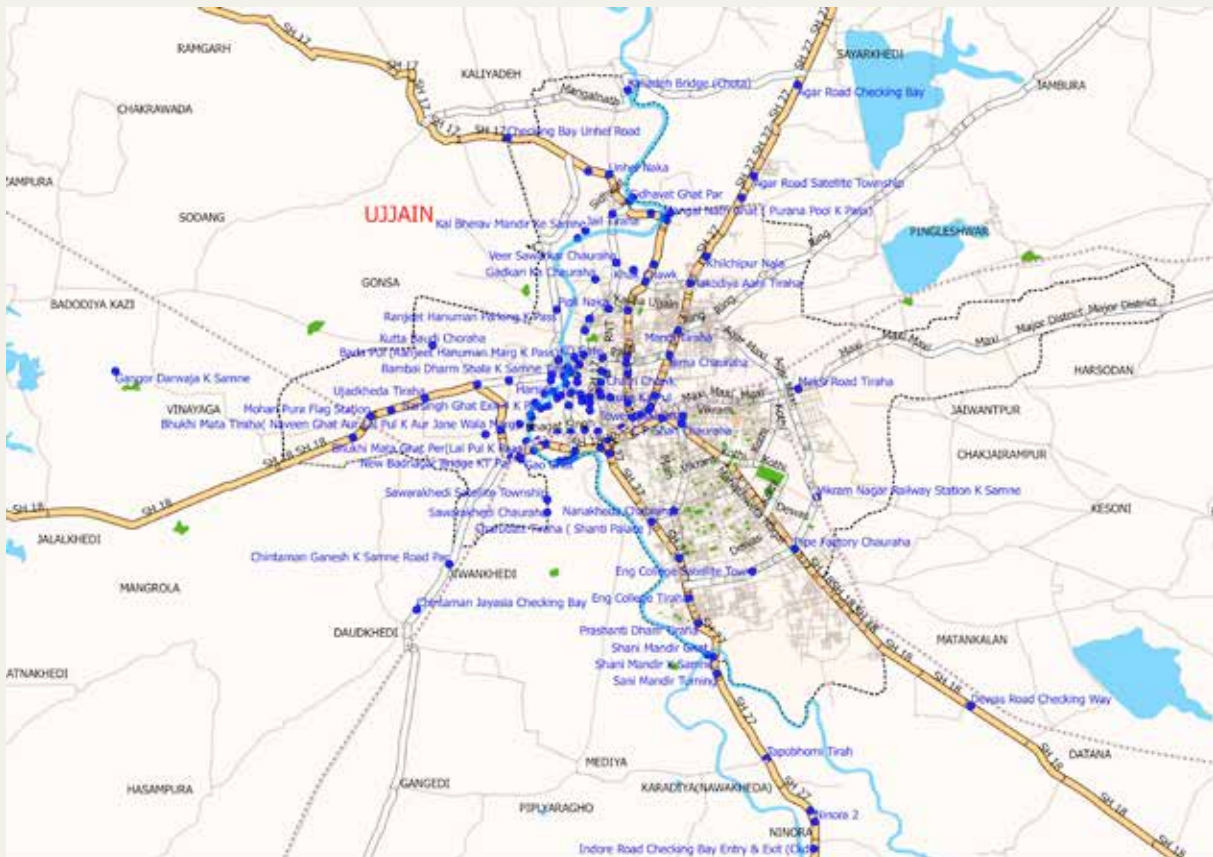
Honeywell successfully completed a city-wide installation of surveillance and emergency response technology in Ujjain to support the Madhya Pradesh Police Department's work in crime prevention, and traffic and crowd management during the Simhashta Kumbh. The Simhashta Kumbh is among the world's largest holy gatherings that attracted approximately 70 million devotees this year, challenging the city's resources to effectively maintain safety and security.

Ujjain's city-wide surveillance project covered all major checking bays connected to the city with integrated closed-circuit televisions (CCTVs) and automatic number plate reading cameras (ANPR) using a command and control center, which integrates the emergency

response and traffic management systems for the Madhya Pradesh Police Department. The cameras supporting ANPR technology recognized the number plates of suspicious vehicles against the police department's pre-loaded data in the system, and helped in counting vehicles from various checking bays. Facial recognition cameras facilitated identification of people on the police department's alert list against their pre-loaded images in the system.

As part of the project, 667 video cameras were installed for the Simhashta Kumbh event at the Mahakaal Temple, and at 134 locations around the city. The project covered traffic and crowd management at checking bays, ghats, temples, and





ashrams. During the event, the system gathered real-time data to help authorities react to any incident and monitor areas for disturbances. Cisco, the networking partner for Madhya Pradesh city surveillance project, helped Honeywell manage and process huge volumes of video data on its platform.

The Madhya Pradesh police department has formally acknowledged Honeywell's contribution in the city-wide installation of surveillance and emergency response technology helping with crime prevention and traffic and crowd management. Senior members of the police department appreciated Honeywell's range of solutions, proven track record, and global leadership in safety and security, making it the ideal partner for the project.

"This project is an example of our long-standing commitment to making cities smarter, safer, and more secure, in-line with India's 100 Smart Cities vision. We have already carried out successful city surveillance projects including Bhubaneswar in Odisha, Aurangabad in Maharashtra and a 11-city project in a large central state, and will continue to focus on this area," said Priyanshu Singh, general manager of Honeywell Building Solutions in India.

The command and control center at Ujjain's Superintendent of Police office was visited by prominent dignitaries attending the Simhastha Kumbh including the Chief Minister of Madhya Pradesh, the National President of the Bharatiya Janata Party, the political leader of the Indian National Congress, and the Lieutenant Governor of Puducherry.

For more information, please visit: <http://buildingsolutions.honeywell.com> or follow @HoneywellBuild on Twitter. *SST*



Regional Report:

Axis Video Surveillance helps Kolhapur become a Safer City

Smart, connected solution enables real-time tracking of crimes, better governance and civic administration.

Mission

Kolhapur, known as a city of palaces and gardens, is a historic Maratha city. Located close to Mumbai, it is rapidly becoming a major tourist attraction. The need to address various concerns of crime management, traffic control and planning, better governance and efficient disaster management was recognized early by the Kolhapur Municipal Corporation. An efficient and integrated security surveillance system was the need of the hour as this would enable the Kolhapur Police and the civic authorities to reduce the probability of a security threat and ensure better safety across the city.

Solution

A smart solution that could observe all entry/exit points, traffic junctions and important tourist attractions around the clock was provided by Axis. The plan was to transform Kolhapur into a safe city project and ensure quicker response times and faster access to evidence in case of law violations in Kolhapur (area of 66.82 km). An installation at 65 locations was made with 165 network cameras-inclusive of 116 fixed cameras, 17 PTZ cameras and 32 panoramic cameras.

Implementation

The Kolhapur Municipal Corporation (KMC) project was executed under the able guidance of advisory consultant Mr. D. Sivanandhan, IPS rtd (former CP, Mumbai and DGP, Maharashtra), the current SP Mr. Pradeep Deshpande, KMC commissioner and Mr. P.



Siva Shankar. Their combined leadership facilitated the implementation of the project. In addition, the continuous monitoring by city engineer Mr. Netradeep Sarnobat, helped the project to be executed without a hitch. DCP Zone-1 Mumbai police, Dr. Manoj Kumar Sharma, made initial conceptualization.



Result

The solution has been successful in ensuring the safety and security of Kolhapur, transforming it into a smart, connected city. It has helped law enforcement authorities to better manage traffic, for real-time tracking of crimes and has enabled better governance and civic administration.

The Axis surveillance solution has also been able to help the police monitor festivals and man VIP movement in the city as well as build a security net for its citizens. Petty incidents like traffic violations and theft will not pose a serious challenge to the authorities as they can always refer to video footage.

“I found that the quality and speed of implementation of the CCTV project excellent. The integrated surveillance system has helped to increase the Police efficiency and ensure better safety and security for our citizens.” K. P. Bakshi,

IAS, Additional Chief Secretary (Homes), Maharashtra Mantralaya, Mumbai.

Smart monitoring and future vision

Overall, Kolhapur Municipal Corporation and the Kolhapur Police have not only succeeded in securing the residents, but also in improving the city’s civic situation and administration via use of the solution. It has assisted the local bodies to monitor law and order during processions, VIP movements and festivals and also helped in the improvement of the overall operational efficiency and in the reduction of manual intervention. The cameras are viewed at the Command and Control Room on 12 (42 inch) LED Monitors. All of the camera feeds are viewed on LED displays and are stored in the server storage. An additional two client workstations have been provided to control all the cameras at the control room.

The solution also includes:

- Efficient backbone design by using, 24/12/6 core OFC Ring Topology that provides (85% - 90%) Path Redundancy- thereby, providing high uptime even after a cable breaks due to natural calamity or accidents.
- Industrial Grade Switches which have been used at the field sites (up to 75 degrees Celsius)- thus, giving workability in very rough conditions such as high temperatures and dusty environments.
- Network Management Software for monitoring. Critical routes rope wire will be used for less anticipated breakages and maintenance at junctions where KMC ducks are used, resulting in massive savings.

The next phase

There are plans to implement the next phase of the project which will include E-Challan/M-Challan, Dial 100, Intelligent Traffic Management System, Flood Sensors and Seismic Sensors, Face recognition, license plate recognition, Police m-Beat System, and integration of all the above with C-Cube (Command, Control and Communication Center).

Deterrence of crime

The Kolhapur Smart City project uses enhanced and high definition cameras that monitor the city around the clock. Manually managing and controlling traffic has posed serious challenges to local policemen in the past and this has been duly corrected with alarms. The SOP’s are available in Marathi, which has also helped the operators to adapt quickly and integrate with the system.

For more information, please visit: www.axis.com. **ESST**



Research Note:

How Brexit Affects the Security Industry



By Jim Dearing, **Analyst for Security and Building Technologies, IHS Technology**

Should the United Kingdom follow through with its plans to leave the European Union (EU), there could be a number of consequences that filter through to security industry stakeholders.

In theory the short-term the market outlook for 2016 and 2017 should be relatively unaffected, the U.K. has yet to activate Article 50, which instigates the formal procedure to leave the EU. Only the U.K. Prime Minister can invoke Article 50 to begin the negotiation process, which is expected to take around two years to complete. To further add to the uncertainty, there is also still a small chance that the new Prime

Minister, Theresa May, will choose not to invoke article 50 because the referendum is not legally binding.

However, it has been just under a month since the vote and some warning signs for the security market have already begun to appear. The British banking and finance sector, a heavy user of video surveillance and access control equipment, has taken a thrashing in the financial markets, largely over fears that it may lose access to lucrative European markets if London fails to keep its passporting rights. Some financial institutions are already taking steps to limit damage to profits by curbing expenditure; this has resulted in



some facilities switching to a “fix-before-replace” approach to security equipment maintenance. Although the slowing replacement rate is bad news for equipment vendors in the short-term, maintenance service revenue for installers and monitoring companies should enjoy a small boost.

Uncertainty over Britain’s future also wreaked havoc in the currency markets, the British Pound lost around 9 percent of its value against the Euro and the U.S. Dollar within 24 hours of the vote. If this downward trend were to continue, U.K.-based manufacturers could see their cost of sales increasing, as they find importing raw materials and components more expensive. However, they should also benefit from a small boost in demand, as their prices become more favourable to those outside the U.K.

In fact, the video surveillance equipment market should be one of the most resilient to this type of market volatility. The majority of equipment is manufactured in Asia, plus a larger portion of vendors are international companies, which are typically more experienced in dealing with changing terms of trade. IHS Markit estimates of market share indicate that less than 5 percent of the European market is supplied by U.K.-headquartered video-surveillance vendors.

Intruder alarm remote-monitoring revenues are also projected to react slowly to the shakeup. Their long-

term contracts lock in revenues and generally protect service providers from short-term swings in demand.

In the longer-term, if formal proceedings to leave the EU are started by the U.K., it would become more certain that the security equipment market will suffer. This would begin in 2018 with minimal effects from slowing investment and the lack of new construction projects. Access control, intruder and fire alarm markets typically track construction rates closely and are forecast to be affected most by this trend. However, a large cut to infrastructure spending would be just as damaging for the video surveillance market.

These negative influences are likely to accelerate in 2019 and 2020, if the UK fails to negotiate a “soft exit”. If a deal cannot be struck within the two-year time-frame set out by Article 50, the U.K. would have to revert to World Trade Organization (WTO) trade rules. This means that tariffs have to be imposed on trade between the U.K. and the EU, which would be a disaster for commerce in both regions -- but especially for the UK. Strenuous efforts are expected to be made to avoid it.

Once the separation is completed, other long-term effects and key points of interest for the security industry include the following:

- The EU funds many development and renovation

projects across the European continent. These projects often come with the stipulation that a certain portion of the funds are to be spent with EU suppliers. U.K. security suppliers are likely to lose this business to competitors, once the Brexit process has been completed.

- The British Standards Institution (BSI) currently follows European standards fairly closely. Without EU membership it remains unclear whether the BSI would feel the need to continue to follow EU standards.
- There are five British-based access-control and intruder-alarm vendors supplying the European market in significant quantity – each with revenue exceeding \$10 million. IHS Markit estimates that these companies combined account for less than 10 percent of total European, Middle-Eastern and African (EMEA) market revenues for both industries.

Information in this Research Note is based on data from IHS Markit Video Surveillance, Access Control and Intruder Alarm Intelligence Services, which each provide comprehensive, regularly updated market data and insights on the global security market.

For more information, please visit: <https://technology.ih.com>. SST



THE BIOMETRIC CITIZEN



By **Sujan Parthasaradhi**,
**Director of Biometric
Applications, HID Global,
APAC**

Biometrics is becoming more familiar in the commercial marketplace, but it has a relatively long history of use by governments worldwide - not only to lower security risks and mitigate fraud, but also to improve the delivery of goods and services to citizens. The focus on strong personal identification is the best means of achieving these objectives. Whether the application is border control or benefit disbursement, knowing the identity of whomever is gaining access to a country, service or privilege is at the heart of any viable government authentication solution, and biometrics is the key.

Biometric National

Governments have a vested interest in knowing who is being issued an identity credential, such as a driver's license or passport, and are increasingly turning to biometrics for the answer. A biometrics identity management system (BIMS), launched by the United Nations High Commissioner for Refugees (UNHCR), has helped to identify and update the records of nearly 110,000 registered and unregistered refugees in Thailand's nine border

camp within five months. As a result, there is now a comprehensive statistical overview of the Myanmar refugee population in Thailand.¹

The sheer scale of public sector programs presents unique challenges for a chosen authentication solution. For example, the national ID program in India (UID) seeks to assign unique biometric credentials to over one billion people. Citizen identity authentication solutions must be especially accurate and secure because they are used by large and diverse populations. Additionally, the credentials must be unique, difficult to copy, and yet easy to use to facilitate convenient transactions while protecting citizens from identity fraud.²

The scale of government projects magnifies even a small error rate into significant numbers which makes the reliability of the biometric technology a critical factor, especially in unattended environments. As one of the largest urban refugee hosts in Asia, Malaysia has been constantly fighting against identity fraud and use of counterfeit documentation.

¹ *Find Biometrics. UN's Biometric Refugee ID Rollout Starts in Thailand. 2015.*

² *International Business Times. One Billion Indians to Have UID Numbers By Year-End As India Seeks To Boost Social Security. 2016.*

³ *World Bulletin. UNHCR introduces new refugee ID cards in Malaysia. 2016.*



To combat these problems, UNHCR has issued new biometric ID cards with enhanced security features for refugees in Malaysia, including retina, fingerprints and faces scans. The new card allows law enforcement authorities to verify its authentication easily by scanning the QR code on a mobile app.³

Multispectral imaging technology was specifically developed to overcome fingerprint capture problems that have plagued conventional fingerprint sensors, such as replicated fake identity cards. Based on the use of multiple spectrums of light and advanced polarization techniques, the HID Global Lumidigm® technology reads unique fingerprint characteristics from both the surface and subsurface of the skin. The collection of subsurface data is important because the fingerprint ridges seen on the surface of the finger have their foundation beneath the surface of the skin, in the capillary beds and other subdermal structures. Unlike surface fingerprint characteristics, which can be obscured during imaging by moisture, dirt or wear, the “inner fingerprint” lies undisturbed and unaltered beneath the surface.

When surface fingerprint information is combined with subsurface fingerprint information and reassembled in an intelligent and integrated manner, the results are more consistent, inclusive and tamper-resistant.

Benefit Disbursement with Biometric Verification

Governments around the world

provide direct benefits to citizens, such as education, healthcare, pension schemes, employment, food rations and financial inclusion. How can program administrators be certain that these goods and services are reaching the intended recipients? What percentage of goods is being diverted to enrich corrupt officials? Are pension benefits being paid out after the death of the intended recipient? Administrators must be able to know who is receiving the goods and services — and only biometrics can verify the identity of recipients with certainty.

In India, some of the largest social welfare programs suffered because of ineligible beneficiaries receiving payments and corrupt officials taking a cut of or delaying payments meant for the needy. Combining the country’s biometric identification system, which currently covers 19 million villagers, with the \$5.5 billion National Rural Employment Guarantee Scheme, corruption and inaccuracies are greatly reduced and the funds can then reach the intended recipients sooner.⁴

Managing Borders with Biometrics

The case for using biometrics at international borders is well-established. Some border crossings are so busy, however, that it might seem that moving people through quickly is a competing priority. Hong Kong Immigration solved that problem by deploying multispectral fingerprint biometrics. The technology reliably authenticates 250,000-400,000 visitors every day

while alleviating long processing delays and preventing spoof attacks. It’s an extraordinary achievement that’s becoming commonplace in other sectors.

In Thailand, police is implementing facial recognition at all border checkpoints. The instalment will not only speed up the immigration screening process, but also prevent transnational crimes.

The operational conditions and heavy-duty cycles required by many e-border applications demand a sensor that is robust, durable, and tamper-resistant. The devices and software selected must be capable of successfully collecting a usable image under a wide variety of environmental and human conditions.

Focusing on Identity

Identity is a perennial social and political issue. By binding rights and privileges to specific individuals, biometrics enables a renewed focus on the protection of identity, rights, privileges and privacy. We all have only one true identity, and this identity must be protected in a sensible, balanced and efficient way. With biometrics, governments can be assured who is claiming rights and privileges.

For more information, please visit: www.hidglobal.com. SST

⁴ World Bank. *Another Boost to Global Action against Corruption*. 2016.



What to Know about **Contactless Cards and Readers** for Electronic Access Control Systems



By Scott Lindley, **President, Farpointe Data**

An increasing number of companies that formerly used only keys are now enquiring about keyless or electronic access control (EAC). Badges, tokens or cards, all perform the same function of limiting access to a facility to only those who are authorized to possess one of these credentials. Countless companies take this a step further by making specialized access cards.

For example, office workers may access their work areas but not areas such as food service while the opposite holds true for food service staff. Often, the security system is programmed to limit access only during specific time intervals, such as a few hours before and after a scheduled event. This is especially important for venues that provide access credentials to vendors and/or delivery personnel.

A wide range of contactless cards and readers are available





Mullion style proximity reader with keypad



However, when we start exploring this world of keyless access, a whole new series of terms pop up - passive cards, active cards, proximity, smart cards, long range readers, Wiegand etc. Let's demystify them.

The most popular passive cards are powered by radio frequency (RF) signals from the reader. They do not have batteries of their own and proximity matters. Typically, they would have a limited range of about four inches and have to be held close to the reader. However, they may have a read range of up to 20 inches. Usually, the larger the reader, the longer it will read. The characteristic of the readers is that those that are mounted on walls are commonly rectangular or square whiled will fit on a mullion-a vertical element that forms a division between units of a window, door or screen.

The passive card and reader communicate with each other via a RF process called resonant energy coupling. Passive cards typically have three internal components - an antenna, a capacitor and an integrated circuit that holds the user's ID number or other data. The reader also has an antenna that constantly generates a short range RF field in a spherical orbit. When the card is placed within the range of the reader, the card's antenna and capacitor absorb and store energy from the field and resonate. This powers the integrated circuit, which sends the ID number to the card's antenna and is then transmitted via RF signals, back to the reader.

An internal lithium battery powers active cards. As a result, they can produce a much longer read range measured in feet and yards, from 4 inches to 15 feet. Their integrated circuit contains a receiver and transmitter that use the battery's power to amplify the signal so that the active card can be detected

from farther away. The longer read ranges and the spherical orbit creates problem for active cards as several readers and cards could end up conversing with each other simultaneously, creating communication mayhem.

The most important message to take away from this is that we should pick the card that works best for the application and make sure that we are using the right type of reader for the card.

What to Know about 125 KHz Proximity Cards and Readers

The 125 KHz proximity card and Wiegand standards currently constitute the majority of the card-based keyless access.

There are three main reasons why proximity cards and readers are still today's most widely used access control technology. First of all, there is no contact between cards and the reader. This eliminates the wear-and-tear factor. Secondly, proximity readers can be made very durable or even hidden into

the wall to make them relatively vandal-resistant. Some are even bullet resistant. Thirdly, for almost 20 years, they have provided the most cost efficient front-end for an access control system. Thus, there is a massive installed base.

Proximity card readers communicate to the rest of the access control systems in various protocols, such as the Wiegand protocol which is a de facto wiring standard that owes its legacy to the popularity of Wiegand effect card readers during the 1980s. Another popular protocol is the ABA Track II interface, a holdover from magnetic stripe card technology. Again, it is not necessary to know what these protocols do or how they work in technical accuracy. The user simply needs to use the interface that the rest of the system uses.

When selecting a proximity card and reader for customers, there are several things to check. First of all, make sure they comply with one or both of the afore-mentioned two main interface protocols so that the cards and readers will interface with a wide range of electronic access control systems. Also, order readers that support several proximity card and tag technologies/brands. Check to see if the reader electronics are secured with tamper- and weather-resistant epoxy potting. This is important as, often; the readers are outdoors or in wet or dusty environments not suitable for electronics. Look for a lifetime warranty for good measure.

Some customers will want what is called multi-factor verification. That means that they want a system that adds value in more ways than just providing a card to activate the door lock. The most popular solution is the card/keypad reader. This makes anyone requesting entrance show the system what they have,



PSM-25 - ISO standard size/multi-tech proximity card



Wall mounted proximity reader

a card, and what they know, a PIN (personal identification number).

What to Know about 13.56 MHz Smart Cards and Readers

As proximity quickly became the predominant credential technology over the last few decades, contactless smart cards are set to augment proximity over the span of the next three to five years. At a cost comparable to proximity card systems, smart card systems may be more secure and can be used for



Smart card reader

applications beyond access control. They can be used for tool checkouts, company cafeterias etc.

All the leading smart card providers conform to ISO standards. ISO 14443 cards operate from zero to four inches while ISO 15693 cards may provide longer ranges, something comfortable for the user and assuring a positive read. However, it is important to be cautious, as there are proprietary, non-standard-based smart card technologies that could bind you to a state of single-supplier dependency and potentially restrictive pricing and delivery structures. It is thus important to be circumspect.

The next term to be on the alert for, is "MIFARE DESFire EV1." It has become the contactless digital RFID technology benchmark for smart cards. MIFARE is the gateway to a series of security levels. The manufacturer asks to be asked for a quick run-through so that one may pick the right level of security for customers.

As with proximity cards, we will need assurance that the readers comply with the Wiegand communication standard. Essentially, the same list applies for review-potted, different sizes, card plus keypad, etc.

What to Know about OSPD

The Open Supervised Device Protocol (OSDP) is a communication standard adopted by the Security Industry Association (SIA) that lets security equipment such as card and biometric readers from one company interface easily with control panels and equipment from another manufacturer. In other words, OSPD fosters interoperability amongst security devices. It also adds sophistication and security benefits through features such as bi-directional

communication and read/write capabilities. A two-way channel paves the way for forward-looking security applications such as the handling of advanced smartcard technology, PKI, and mobile device access. Not only does it provide a concise set of commonly used commands and responses, it also eliminates guesswork because encryption and authentication is predefined.

In other words, OSDP helps ensure that numerous manufacturers' products will work with each other without additional problems. Interoperability can be achieved regardless of system architecture. For instance, the specification can handle smartcards by constantly monitoring wiring to protect against attack threats and serves as a solution for high-end encryption such as required in federal applications. The specification for handling LEDs, text, buzzers and other feedback mechanisms provides a rich, user-centric access control environment.

What to Know about 433 MHz Transmitters and Receivers

Note that the terms "transmitters and receivers" are used in place of "cards and readers." The receivers support both 2-button and 4-button transmitters ranging up to 200 feet. Each button outputs transmitter data, the user's ID number or other data, over separate Wiegand outputs but the receiver installs just like a standard proximity reader for easy integration with popular access control systems.

They are a terrific solution for long-range access control applications such as gates and vehicle barriers, moving aircrafts in and out of secure hangars, arming and disarming alarm systems as well as situations calling for emergency response.



SECURITY FEATURE I WHAT TO KNOW ABOUT CONTACTLESS CARDS AND READERS FOR ELECTRONIC ACCESS CONTROL SYSTEMS



Long Range receivers and transmitters

Instead of using a generic card, which could activate more than one device or door at a time, the transmitter holder selects exactly the mechanism to be immediately triggered.

Available in both a two- or four-button configuration and equipped in a standard manner -with a potted proximity or contactless smart card module- the transmitter can also be used as a traditional, presentation-style access credential. For example, a button may be pressed to activate a long-range application, such as a gated parking barrier, and then be presented to a proximity reader to allow entry through a door and into the building.

What to Know about Contactless Cards and Fobs

The different technologies use somewhat different cards but they all tend to work in a similar manner.

Most proximity manufacturers provide one of three types of cards: standard light, image technology and multi-tech card. The standard light proximity card is a clamshell design, meaning that there are two connected sides sealed together to hold the electronics. An image technology card is a slightly thicker card appropriate for dye sublimation printing. Lastly, the multi-tech card is a proximity card, which is approximately the same

size as a credit card that may or may not have a magnetic stripe on it. It is commonly referred to as an ISO standard size.

There are two main types of smart cards. The clamshell contactless smartcard is an ISO14443-compliant card with a 1K-byte memory. More memory may be added on. The ISO contactless smartcard is an ISO14443-compliant card with a 1K-byte memory. It, too, can be ordered with more memory space. Manufactured from glossy PVC, it is appropriate for dye sublimation imaging.

Keyfobs are also available in both proximity and smartcard technologies. They are often used in place of cards, as they are designed to be carried on a key ring. The most durable are often the brass-reinforcing eyelet.

What to Know about Preventing Hacking and Duping of Your Card System

Criminals have figured out how to capture and use card-based



Keyfob



information to fool the system and let the unauthorized in by using skimming, eavesdropping or relay attacks.

Skimming occurs when the attacker uses his reader to access information on the victim's RFID token without consent. An eavesdropping attack occurs when an attacker can recover the data sent during a transaction between a legitimate reader and a token. A successful relay attack lets an attacker temporarily possess a 'clone' of a token, thereby allowing him to gain the associated benefits. Using any of these relatively inexpensive methods will let an unauthorized person in.

Adding to the problem is that Wiegand, the industry standard over-the-air protocol commonly used to communicate credential data from a card to an electronic access reader, is no longer inherently secure due to its original obscure and non-standard nature. Today, no one would accept usernames and passwords being sent in the clear. This is understandably so as such credential data is rendered vulnerable. ID harvesting has become one of the most lucrative hacking activities. In these attacks, a credential's identifier is cloned, or captured, and is then retransmitted via a small electronic device.

Leading card and card reader manufacturers offer security solutions. The first is to provide a higher-security handshake, or unique code, between the card or tag and reader to help ensure that readers will only accept information from specially coded credentials. The integrator does not provide another organization with the same code. As a result, no other organization will have this reader/card combination. Only that single company's readers will be able to read their cards or tags and their

readers, likewise, will read no other organization's cards or tags.

The second major solution is Valid ID, an anti-tamper feature available with contactless smartcard readers, cards and tags. It adds an additional layer of authentication assurance to NXP's MIFARE DESFire EV1 smartcard platform, operating independently, in addition to, and above the significant standard level of security of DESFire EV1. Valid ID lets a smartcard reader help verify that the sensitive access control data programmed to the card or tag is not counterfeit.

During manufacture, readers, cards and tags are programmed with a fraudulent data detection solution. The Valid ID algorithm cryptographically assists in ensuring the integrity of the sensitive access control data stored on the card or tag. With Valid ID, readers scan through the credential's access control data searching for data discrepancies, which may occur during the counterfeiting, tampering or hacking of the credential. If tampering is detected, the reader reports it promptly to the access controller, identifying the credential in question.

What to Know about Vandal-Proofing the Card Reader

Vandal-resistant and bullet-resistant contactless card readers are ideal for installations where more durability is required than what is available from a standard reader. These are currently becoming big hits at schools, universities, correctional institutions, housing authorities, factories, hospitals and other locales where RFID proximity and smart card readers can take a beating.

Using both types of hazard-resistant readers is beneficial as protection is greatly enhanced because the electronics are sealed

in weather- and tamper-resistant epoxy potting for both indoor and outdoor operations. This provides an IP67 rating which assures the electronics are protected from water, steam, detergents, dust, sand, tools and other elements that could be used to impede data collection. In addition, the vandal-resistant readers are manufactured from thick polycarbonate material and feature tamperproof screws. An anti-tamper mode is also available, providing supervision of both the reader and its cabling.

Bullet-resistant proximity card readers can provide the highest level of vandal resistance by featuring a virtually indestructible exterior. These readers are milled from a solid block of stainless steel and reinforced with a bullet-resistant insert that is compliant with UL752 performance level standards of ballistic protection.

What to Know about Lowering Energy Costs

Some vendors provide eco-friendly readers with a technology that cuts energy costs as an alternative option. It is an easy addition to any company's green initiative. In emergency power situations, proximity readers using the low energy option can reduce average current draw by as much as 50 percent, providing significantly longer up-times with their back-up batteries. They can also expect long-term energy savings.

The Bottom Line

Whatever you may need at the front end of your access control system, you should be able to find a solution that meets your needs without difficulty.

For more information, please visit: www.farpointedata.com. SST



Access control: Why open systems are the future



By Pia Hantoft, **Product Manager Physical Access Control, Axis Communications**

New technology is starting to change and expand the access control market. IHS estimates that the physical access control market will be worth 4.2 billion US dollars by 2017, with a predicted annual growth of 7 percent.

Currently, over half of access control systems used by enterprises are integrated with video surveillance, with the average installation covering ten doors and 128 users.

However, the problem with many of the available solutions today, whether IP, analog or hybrid, is that they are proprietary systems that offer very limited flexibility as their interfaces do not allow integration with third party products. This means customers are locked in to buying any extensions to these systems from the same vendor. Updates or upgrades to include video or additional features are often complex, costly and time-consuming, as cables have to be laid and connected to a central unit or a central server.

Much is being said about the Internet of Things - and this development will also affect access control systems. In a world where everything is increasingly connected, the time has come for an easy to use, flexible and open alternative: open IP solutions.



With open IP solutions, the access control units can use existing network infrastructures. Power locks, readers and other door equipment are now available with Power over Ethernet, which means one single cable provides both the data connection and electrical power and cabling is hugely simplified. With an open application programming interface (API) and configurable I/O ports, these systems use standard Internet and connection protocols and can be easily integrated with other IP-based devices – from surveillance cameras to intrusion detection sensors to heating, ventilation and air conditioning (HVAC) systems.

Unlimited flexibility

With an IP-based system, every access control unit represents a smart, independent device that is installed by each door. The units include integrated software for basic access management, as well as more sophisticated software that integrates and communicates with other systems in the network. Such a solution is not only flexible in terms of integrating it with other connected devices: it is also freely scalable. Access control systems built on these units can be extended to any size, from small installations to advanced installations that meet the needs of large enterprises.

With every unit in the installation being a smart, connected device in itself, unlike analog or hybrid systems, there is no need for a central server. As all communication to and from the devices runs via the IP network, administration can be done from virtually anywhere, using web-based software.

Whether it's managing cardholders, permissions and user groups, locking doors remotely or tracking events and sending out automated SMS notifications in case of an irregularity – all of these requirements can be easily programmed into the administration software, and controlled from any authorized computer or handheld device that's connected to the network wirelessly.

The shared information such as system data, user credentials and configuration settings are all

automatically synched between all smart units in the system. This also makes adding new devices and extending the installation extremely simple, as existing cardholders and system data can be imported onto the new controllers.

The backbone of a smart building

As an open platform for integration, IP-based access control units with an open API can run several types of software in parallel. Access control software with flexible functionality is the obvious example. Video management software allows the additional, easy integration of the door unit with network video cameras for enhanced usability and security. With video management software, access control events can automatically trigger the recording of video, for example when access to a door has been denied, an invalid card is being used, or an individual tries to force a door open.

Over and above this, a platform for physical security integration management would enable the management of a whole range of different security systems such as video, access, intrusion and motion detection, all through one common user interface.

Other scenarios are possible where integration with facility management triggers the lights and air conditioning in a room to be switched on as employees access the building, or the door units control sensors that monitor temperature, moisture and room climate. In theory, any type of sensor can be added and the door units – as the modules facilitating communication between all those devices – would then form the intelligent backbone of a smart building system.

Innovation in the access control market has historically been slow. In video installations, the industry has seen a great amount of innovation since the shift from analog to network cameras. Now it is time for the access control market to catch up.

For more information, please visit:
www.axis.com. **SSR**



HOW SECURITY GUARD CALLOUTS CAN BE REDUCED BY ADDING NETWORK AUDIO TO VIDEO SURVEILLANCE



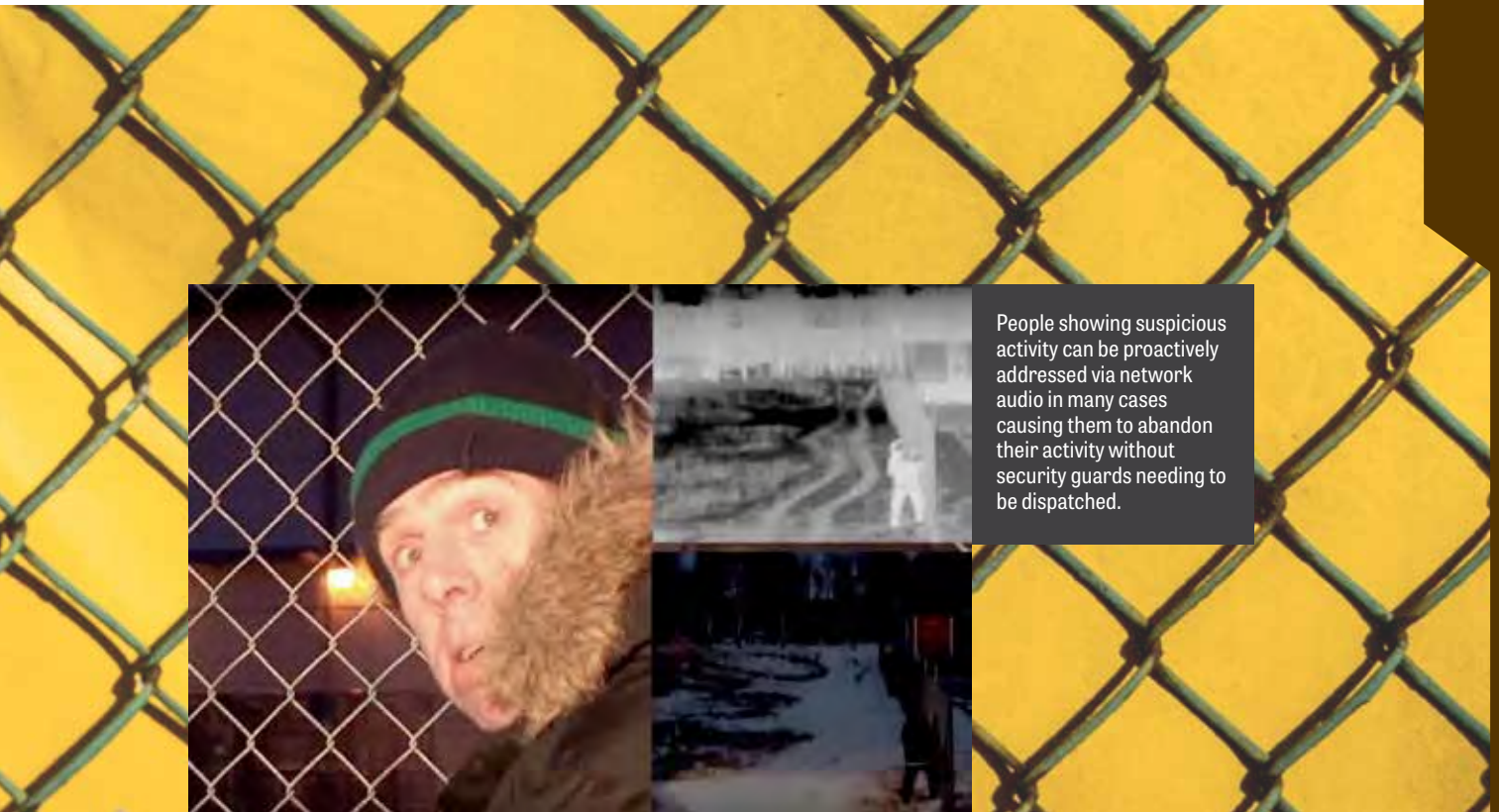
By Håkan Hansson,
Product Manager,
Axis Communications

Remote video surveillance monitoring with audio talk-down capabilities is proving to be a very effective and powerful combination. As alarm monitoring services and security guard companies increasingly substitute manned guards with video surveillance and centralized control centers monitoring the feeds, there is a growing need to be able to address and respond to incidents immediately from a remote location.

Network audio enables an effective way to intervene directly at the scene of an incident. When video surveillance cameras or perimeter detection devices identify a breach of the perimeter or people loitering, an alarm message is displayed in the control center. This can either automatically trigger a pre-recorded audio message to be played back at the scene of the incident or the operator can quickly assess the situation from video footage and live feed before responding by speaking through a microphone. The operator can talk directly with the people at the scene of the incident potentially de-escalating the situation before deciding to dispatch a security guard.

Network audio enables proactive video surveillance

If operators are able to speak directly to those that triggered an alarm or show suspicious behavior, this makes a great difference compared to only being able to record their actions on video. Network audio can be used to communicate warnings, orders or requests from a remote control center location directly to people trespassing, loitering or otherwise needing to be addressed. For instance, if a person in a video surveillance camera's field of view demonstrates suspicious behavior or is seen to be entering a restricted area, an operator in the remotely located control center can send a verbal warning to the person. In a situation where a person has been injured, being able to remotely communicate with and notify the victim that help is on the way can greatly help with managing the incident.



People showing suspicious activity can be proactively addressed via network audio in many cases causing them to abandon their activity without security guards needing to be dispatched.

Security services company Securitas is using network audio to make its video surveillance services more effective. The company is offering cloud-based remote video surveillance (security as a service). This approach reduces the cost compared to security guards patrolling customer premises. By adding network audio to video surveillance cameras, Securitas can offer its customers real-time security services at competitive price points as security guards are only sent out if and when needed. Besides the cost savings, network audio also enables Securitas to more effectively address incidents being able to immediately communicate in a de-escalating and deterring manner.

Easier to install than analog speakers

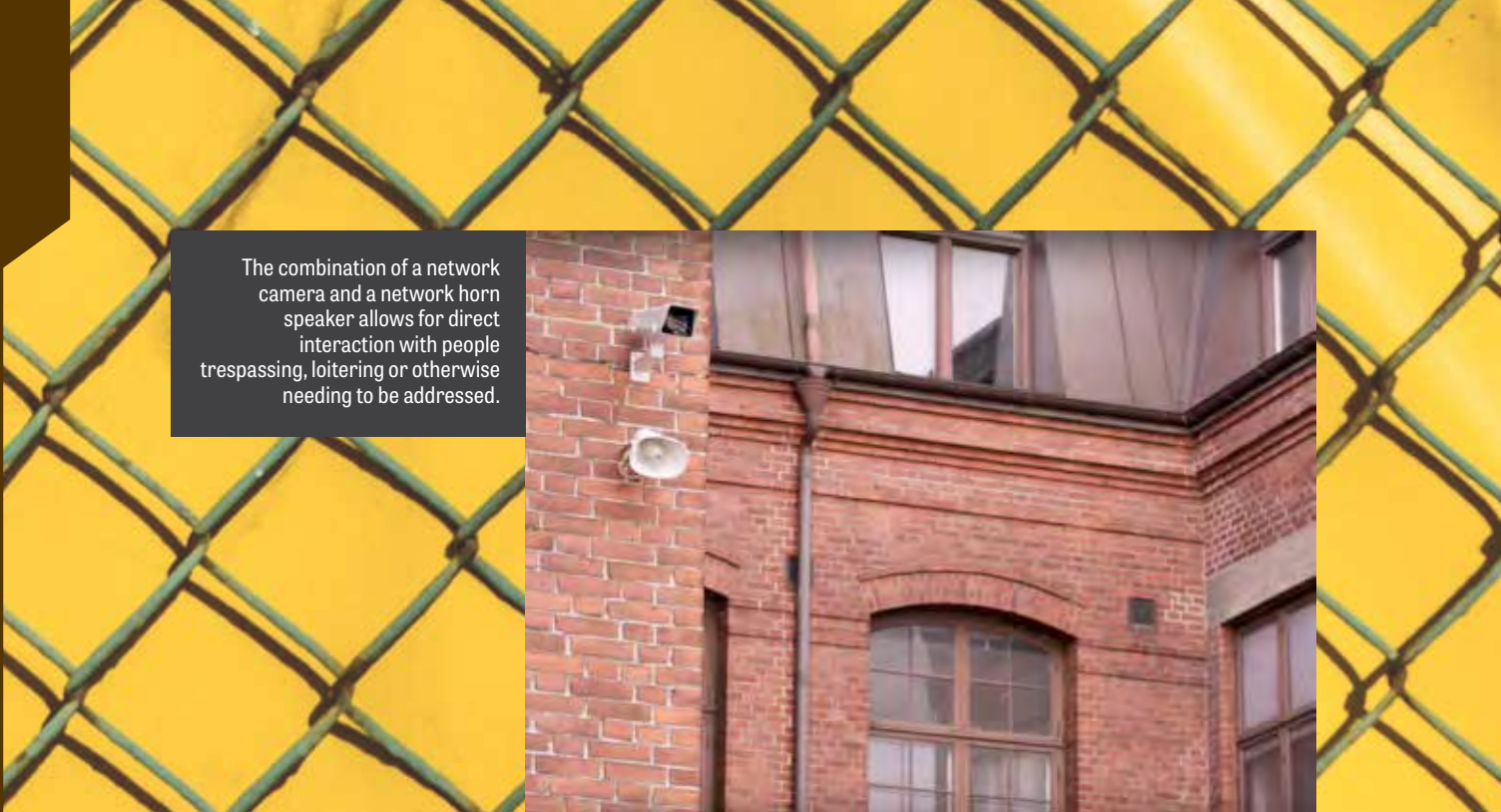
Audio talk-down is a function that is supported by most video management software (VMS), either by allowing the operator to speak directly by pressing a button in the video view or by automatically playing back pre-recorded audio messages on different previously defined triggers. This native VMS integration makes it easy to add audio talk-down to a video surveillance system. Many network cameras come equipped with onboard audio capability. If there is external power available, an amplifier and analog speaker can be connected to the audio output of the camera.

Adding network audio functionality to video surveillance systems is even easier as network horn speakers can be added. Network horn speakers

“Horn speakers allow our operators to immediately intervene when video analytics alerts us of trespassing at customer sites,” says Lars Kämpe, Business Development Manager at Securitas, which equips virtually all of its outdoor perimeter protection installations with loudspeakers. “Normally, a trespasser will flee the scene when notified of his detection. This saves cost for our customers due to reduced damages and also no unnecessary callouts.”



SECURITY FEATURE I HOW SECURITY GUARD CALLOUTS CAN BE REDUCED BY ADDING NETWORK AUDIO TO VIDEO SURVEILLANCE



The combination of a network camera and a network horn speaker allows for direct interaction with people trespassing, loitering or otherwise needing to be addressed.

provide a simple-to-install and complete paging solution in a single unit. With Power over Ethernet (PoE) the unit gets power and connection over a single network cable, just like a network camera does. This means you do not need an external power supply or any additional equipment.

In a network audio system every horn speaker is individually addressable providing great flexibility and scalability. Integration with other systems becomes piece of cake with IP-based technology. Network horn speakers can be integrated directly into the VMS or into a standard Voice over IP (VoIP) phone system using SIP.

“Securitas has worked with analog loudspeakers until now,” says Kämpe. “With analog loudspeakers, there is always an uncertainty since there is no way to remotely detect if they are actually working correctly. Network horn speakers allow us to remotely monitor the heartbeat of the speaker and check the sound quality. The speakers also support PoE, which makes them easier to install and lowers installation costs. It also gives us the possibility to use pre-recorded messages.”

Smart functionality with network audio

Network horn speakers allow operators to monitor the connection and status of each unit at all times. This is not possible with analog speakers. Operators would not be sure an analog speaker is operational at a given time or that its volume or sound quality are sufficient. Network horn speakers feature a built-in microphone and onboard analytics allowing for automatic self-checks to ensure the sound quality is always optimal. The microphone can also be used to listen in to the scene or for automatic intelligent detection of aggression, gun shots, explosions or vandalism.

Network horn speakers are a simple yet extremely effective addition to video surveillance systems. They allow remote operators to directly address people and deter unwanted activity. Security guard callouts can be reduced and incidents better managed being able to communicate with those present at the scene.

For more information, please visit: www.axis.com. **SST**



2016 Security China

The 13th Edition China International Exhibition on Public Safety and Security 2016

The Largest and Longest Running Trade Fair in China Public Security Industry, Set a New Standard

Date: October 25-28, 2016

Venue: New China International Exhibition Center, Beijing, China

Address: No.88, Yuxiang Road, Tianzhu Area, Shunyi District, Beijing, P.R. China

Featured Exhibitors in Security China Expo



Alleviating Human Error with Management Access Control Systems



As the old saying goes, “To err is human.” Everyone makes mistakes, but some have more far-reaching and even potentially dangerous ramifications than others. In the case of security and its critical mission of protecting people, places and assets, mistakes can lead to losses and potentially cost lives.

Without question, physical keys still play a vital role in the security process. However, key management is one of the most overlooked areas within security where human error can make a big difference. And when it comes to tracking and controlling access to keys, human error is perhaps the main factor an organization should consider when selecting and utilizing a key management system.

The unfortunate reality is that traditional key management is often human-based, consisting of an individual or department in charge of maintaining a lockbox. The keys it contains, which include masters and duplicates, are usually signed out to someone using written records, which may require consulting a list of who is authorized to use certain keys. Key returns may be even less controlled, and there is no way to ensure that keys find their way back to the appropriate place within the cabinet, which has a direct effect on the effectiveness and accuracy of the sign-out process.

With these types of manual key management processes, the risk potential is much greater. Transposed or incorrect numbers and illegible handwriting are not uncommon and only increase the chances of error. Another common issue is forgetting to lock the cabinet after removing or returning keys, which makes it possible for anyone to open the cabinet and remove or return keys without that activity being logged.

Compounding the problem is the fact that manual practices can’t address the issue of individuals who either don’t know about, don’t understand or simply choose not to follow policies and procedures related to keys. There is



SAFETY & SECURITY ASIA 2016 SINGAPORE

THE 15TH INTERNATIONAL SAFETY & SECURITY TECHNOLOGY & EQUIPMENT EXHIBITION

IN CONJUNCTION WITH



HALLS B & C MARINA BAY SANDS SINGAPORE 28 - 30 SEPTEMBER 2016

WWW.SAFETYSECURITYASIA.COM.SG

ENHANCING PRODUCTIVITY THROUGH SMART SECURITY SOLUTIONS

A Part of Architecture & Building Services 2016



Design



Support



Light



Secure



Protect

Join Safety & Security Asia 2016 today to expand your business network with leading industry experts and players!

Safety & Security Asia 2016 brings together top experts and professionals in the field to showcase an extensive array of new technologies, solutions, products and services catering to the safety and physical security arenas. Don't miss out on this opportunity to connect with key players in the industry through this exciting conference-driven exhibition in conjunction with the Security Industry Conference 2016.

At SSA 2016, you can be sure to meet your key buyers: **Architects, Builders, Contractors, Developers, Engineers, Facility Managers, Government Agencies and Security Consultants & Managers!**

SSA 2016 will also be held in conjunction with ArchXpo, International Facility Management Expo, LED+Light Asia, Fire & Disaster Asia and Work Safe Asia 2016, creating a comprehensive and integrated platform for all building needs under one roof as part of **Architecture & Building Services 2016**.

Organised By



Conference & Exhibition Management Services Pte Ltd

Host



Security Systems Association of Singapore

Supporting Organisation



ASIS International Singapore Chapter

Event Highlight



Merlion Awards 2016

For sales enquiries, contact:

E: ssa@cems.com.sg

T: +65 6278 8666

F: +65 6278 4077

W: safetysecurityasia.com.sg

Concurrent Events



also no strong control over how long someone is authorized to have a key, when it is returned – if at all – and whether it goes missing.

With manual management systems, a missing key may go unnoticed for days or even weeks, especially if it is used infrequently. Once the missing key is noticed, determining who had it last requires an inefficient, time-consuming manual process of searching through physical records to identify who signed it out. Even then, that individual must be located to find out if he or she simply forgot to return the key to the cabinet or if it may have been lost or stolen. In the meantime, there may be a key floating around out there that could potentially be used by unauthorized individuals for unauthorized purposes.

The good news is that technological advances in key management solutions are reducing and even eliminating the potential for human error. Automated key management solutions bring high-tech to the world of physical keys.

Automated key management access control systems with fail-safe features eliminate the chance of not knowing who has removed a key or not maintaining a good record of keys being taken out or returned. To control who can access which keys and at what time of day they may be used, these automated solutions can only be accessed using a PIN, biometrics or other proven ID method. For an extra measure of security, organizations may require dual verification before granting access to the cabinet.



Another process that is difficult, if not virtually impossible with physical records is auditing and compiling records manually. For organizations that are required by law to demonstrate compliance with specific regulations, auditing is a part of life.

Today's networked key management systems automatically collect data to create an audit trail of key usage and any incidents such as missing keys. These reports can be emailed to appropriate individuals at predetermined times. For incidents, such as a key that has not been returned on time, the system generates an alarm, allowing security and management to immediately follow up to determine what happened.

An added benefit of these systems is time efficiency. For example, if there is often a line of people waiting to get the keys they need, the delays this causes lead to lost productivity. In this situation, it would also be natural for the person responsible for key management to rush the process, raising the potential for error. An automated key management system increases the speed, efficiency and accuracy of verifying that an individual is authorized to have certain keys and providing them with only the keys designated for their use. This also applies to returning keys.

Humans make mistakes. In security, the potential risk from manual, human-based processes can create dangerous situations. Automated key management solutions with fail-safe features provide capabilities that allow organizations to maintain strict control over who can access and use certain keys and for how long, and immediately alert security and/or management if a key is missing.

Using a combination of advanced technologies, these solutions significantly lower and in many cases even eliminate the possibility of human error present in manual key management processes.

Automated key management systems boost organisations' efficiency, productivity and – most importantly – make them safer and more secure.

For more information, please visit: www.morsewatchmans.com. **EST**

**ACCESS THE FAST GROWING >>>>>
INDONESIAN CONSTRUCTION MARKET
TO GROW YOUR BUSINESS IN 2016**



**5TH LARGEST
ECONOMY**
IN THE WORLD BY 2030

**BOOK YOUR
STAND TODAY**
[info@thebig5construct
indonesia.com](mailto:info@thebig5constructindonesia.com)
+971 4 438 0355

\$153 BILLION
STATE CONSTRUCTION
**BUDGET
FOR 2016**

Collocated with



City of Ipswich

Metropolitan center keeps promise to safeguard citizens by undertaking major video surveillance upgrade with Genetec™ Security Center



Business Challenge

Just 40 kilometers west of Brisbane, Australia, is an urban center called Ipswich. With a population of just under 200,000 residents, the City of Ipswich is home to one of the oldest and best known public surveillance systems in Australia. Installed in 1994 in response to rising street crime, the Safe City solution is owned and managed by Ipswich City Council whose objective is always to keep citizens safe.

While the Safe City solution represented the best video surveillance technology of the day, around three years ago, it was decided that the system should incorporate IP camera technology, and that the Council's adjacent surveillance system should be brought into the Safe City control room. For this, a new video management system was needed.

After a two-year testing period, the City chose to install Genetec™ Security Center, a unified security platform



which includes an advanced video management system (VMS), Omnicast™. The hardware-agnostic platform also merges access control and license plate recognition systems within the same solution, offering an intuitive user experience and other advanced features such as mobile capabilities, a map-based interface and more.

Open Architecture Ensures System Longevity

At the end of this ongoing migration, the Omnicast™ IP video surveillance system will be used to manage just over 500 cameras from the Safe City control room. The upgrade from the former video management solution to Genetec™ Security Center is designed to provide the City with hardware freedom - not just in terms of video surveillance cameras, but concerning any other devices the City may choose to incorporate into its solution in the future.

With the new VMS, changes to the perimeter of the system - new cameras or any other devices in the future - have no impact on the functionality of Genetec™ Security Center in the control room. As well as installing the latest IP cameras, the City can also continue to leverage its existing analogue



cameras, and deploy medium-term solutions such as HD-SDI technology, that use existing coaxial infrastructure.

According to Larry Waite, Safe City Security Coordinator at Ipswich City Council, "Something Genetec™ Security Center does that's extremely important to us is scale. There is no limit in terms of growth and that's excellent from our perspective. Every time we add more cameras we can just add more hard drives and expand the system."



Monitoring Hotspots through Ease-to-Use Interface

As part of Safe City's policy of actively engaging with cameras, Waite says operators are always using VMS functionality to actively search for incidents. "What we do is target hotspots based on our experience," explains Waite. "At a given time of a certain day we will move cameras and park them to view particular locations where events have occurred in the past."

Video can be sent through to the shift supervisor at the police station about 1km away, as well as to the police communication room about 5km away. "We can also communicate over police radio and inform police of an event on screen and assist them in real time. Certainly police appreciate the system and the courts love it because when faced with clear video evidence most perpetrators plead guilty, so cases are not dragged through the courts," explains Waite.

Streamlining Response with Security Center Mobile

With the upgrade to Security Center comes the capability to work more effectively with police officers when they are on patrol. "We now have tablets that we can give to police so they have mobile footage of events in real time," says Waite. "For instance, police can see all the cameras in the mall in a 9-screen split on a tablet. This allows police to see what's going on in the next street over during the process of an operation.

"Using police radio, police officers can tell us who they are looking for and we can say - 'they are on such and such street'. Police can then zoom in using the tablets to identify individuals and then take appropriate action to apprehend offenders. This new mobile component of the Genetec™ system is very flexible. We've only used it in the CBD with police so far, but it can be used in parks by our rangers, too."

Security Center Upgrade Makes a Difference in the Community

The process of upgrading to Security Center has been about preparing for the future. Council's goal is to



continue the process of going digital, while trialing new technologies such as the AutoVu™ automatic license plate recognition system which has been added recently as a pilot project.

According to Waite, "This system has absolutely had an impact. The Safe City system has led to what is touted as a 78 per cent reduction in crime compared to the year before the system was installed, despite a much larger population. Crimes we used to get in Ipswich like bag snatches, car thefts, armed robbery and thefts at ATM machines - we simply don't see those types of offenses anymore."

Infrastructure at a Glance

Omnicast™, the IP video surveillance system of Security Center, manages 510 cameras from various manufacturers including Panasonic, Pelco, Samsung, Bosch, Axis and Elbex. A BriefCam VS Forensics solution is also being used to synthesise events from real time video streams. Safe City's VMS upgrade is built around Council's unprecedented fibre intranet, which stretches for tens of kilometres across the council area. The Safe City cameras have its own dedicated fibre, which ensures no issues with bandwidth. All video is recording at 25ips per channel in high-definition with a 14-day retention time.

For more information please visit: www.genetec.com. **SST**



HID Global and MyTAG.io team to help CityPoint reach new heights in security and efficiency

Trusted NFC tags streamline security and management systems for iconic office building

CityPoint is one of London's most iconic structures. The arched roof with cantilevered buttresses reaches 417 feet (127 meters) skyward, flanked by low-rise extensions creating two 12-story galleria and a ground floor winter garden with sloping, glazed roofs. CityPoint's 35 stories of structural steel, glass and aluminum includes over 706,000 sq. feet (65,600 sq. m) of office space, ground-level shops and restaurants, a fitness center, multi-level underground parking and basement level storage.

The tallest in London when it was first built in 1967, the CityPoint building has since evolved along with the historic city, adapting to new demands by implementing advanced technology to keep pace with changing times.

"Technology and tenant needs have changed dramatically since this building first opened 50 years ago," said Lee Murray, CityPoint building manager. "CityPoint thrives today by adapting quickly to change, and striving to operate our facilities at the forefront of technology."

"MyTAG showed us how their solutions integrated with NFC technology from HID Global could enhance the accuracy and efficiency of all three areas with a common platform."

(Lee Murray, Building Manager, CityPoint)

Challenges

Operated by CityPoint's Estate Management Team, CityPoint's mission is to ensure an optimal environment for businesses to conduct enterprise activities, while maintaining high security standards that protect tenants, their guests, their assets, as well as CityPoint staff and contractors.

Thousands of people pour into and out of the building with each day, while CityPoint staff and contractors



maintain 24-hour watches over the operations. Amongst their daily functions, three potential areas of improvement was identified for the facility:

Automated key management:

Over 220 physical keys unlock distinct areas within the facility. CityPoint staff are assigned varying levels of authorization, designating which keys they are allowed to use to access secure areas as needed. A manual, paper-based system for tracking the distribution and collection of keys has proven time consuming, ineffective and inaccurate- resulting in lost and stolen keys on a regular basis.

Improved security patrol:

Security officers and contractors patrol 280 designated points within the building and an additional 15 points on the surrounding grounds every day. In the beginning, a handheld wand was used to collect a digital timestamp at each numbered checkpoint, with the data downloaded to computers only after the completion of each individual patrol. Incident reports were handwritten, meaning they were largely un-actionable until each patrol was finished.



Even then, the written reports had to be cross-referenced with the numerical checkpoint data for verification.

Better contractor management:

Daily, dozens of mechanical and security contractors on site helped keep CityPoint running smoothly. Despite that being a significant operational expense, CityPoint lacked a means for accurately auditing billable time for contracted services.

Solutions

MyTAG.io and HID Global partnered to create a system for CityPoint that integrates data key management, security patrol and contractor services into a single interface to deliver more accurate information in real time. Near field communication (NFC) technology enabled seamless deployment of the solution throughout the facility, with minimal investment in infrastructure.

Cloud-based solutions, including MyTAG’s security management software and HID Trusted Tag® Services, allowed CityPoint to deploy this comprehensive solution using their existing computer infrastructure, standard NFC-enabled smartphones and tablets, and NFC readers that connected to computers via USB.

The cloud-based system further enabled CityPoint’s estate management team to customize the interface with their commercial property information, employee information, contractor details and other data to provide complete control and visibility into facility operations.

“The CityPoint solution required placement of unique identifiers at hundreds of points within the building and the surrounding grounds outside, in addition to equipping the staff and contractors,” said Mark Robinton, Director of Business Development and Strategic Innovation with HID Global.

Several hundred HID Global NFC tags were deployed to identify assets, checkpoints and people throughout the facility.

- HID Epoxy Tag Keyfob transponders, designed to provide unique identities to keys, were ideal for CityPoint’s key management application.
- HID Inlays & Labels were used to designate numerous patrol checkpoints throughout the building. NFC Stickers custom-printed with a CityPoint illustration fit seamlessly with the building’s interior design standards, while clearly marking each point for guards to tap on their daily tours.



- To designate outdoor checkpoints, HID Poly Tag transponders were chosen for their ability to withstand exposure to seasonal elements.
- Familiar ISO Card badges enable contractors to check in and out easily at NFC terminals.

A simple tap is all the training most personnel needed to ensure effective system deployment, while HID Trusted Tag® Services – in contrast to traditional NFC tags – ensured each tap with an NFC device is secure, unique and impossible to clone.

Key management:

To use a physical key, a user can now just tap a tablet computer with the keyfob and enter an authorized identity. The user is then notified of when the key is due to be returned. When returned, the user taps the tablet again to check the key back in. MyTAG.io generates a main dashboard screen showing all keys that are checked out, who has them, and when they are due back.

Security patrol:

On patrol, security guards can now simply tap each checkpoint on his/her designated tour with their NFC-enabled smartphone. MyTAG.io identifies each checkpoint by name, and automatically uploads timestamp information and updates databases in real time.

The MyTAG.io system records a guard’s progress automatically and can trigger an alert should too much time pass between checkpoints. If a guard encounters an incident, they can use their smartphone to generate a detailed report – including photo or video evidence if necessary – and immediately escalates activity as needed according to preset protocols.

Contractor management: Contractors are now issued pre-printed NFC ISO cards upon arrival at CityPoint. They tap a tablet computer to check in and confirm their identities. Another tap records the completion of their assignment, and the card is returned to facility management for re-use.



Benefits

“HID Trusted Tag Services enables proof of presence, with frictionless authentication - which is the ideal match for commercial and private real estate properties,” said Mike George, managing director of MyTAG. “With full integration into MyTAG.io, the opportunities are limitless to deploy secure proof of presence and other trusted NFC capabilities throughout CityPoint as their business needs continue to evolve.”

CityPoint has significantly reduced staff time previously spent manually logging and tracking keys, not to mention time and resources spent replacing lost or stolen keys. Not only can the team account for each key instantaneously, they now also have access to historical issuance and return activities to better understand which keys are in greatest demand and by whom.

The improved security patrols deliver greater peace of mind for tenants and staff, through more timely, accurate and detailed reporting. Even when an individual security guard is on patrol, the guard is constantly connected to facilities management, creating proven interactions at every checkpoint.

MyTAG.io can track the time lapse between checkpoints, and in the event that a guard does not reach a consecutive

point in the prescribed amount of time, the system can trigger an appropriate alarm – from a reminder message to the guard, to an alert for facilities staff to investigate further. This provides added assurance to guards that they have constant communication with facility staff, even when walking tours alone.

Results

CityPoint reports that the NFC and cloud-based solution has reduced the time it takes for individual security patrols, due to the increased efficiency of digital tracking versus the previously cumbersome manual recording of checkpoints and incidents. Eliminating the paperwork also enables each guard to more effectively observe surroundings.

CityPoint has also recognized improvement in the management of their contract employee partners. More accurate, auditable time and attendance ensures CityPoint is paying only for services rendered, and contractors are ensured fair compensation for work completed. Reports detail site visits and activities, providing management insight and substantiation for contractor invoices.

For more information, please visit: www.hidglobal.com. *SST*



Security Solutions Today

Security Solutions Today (SST) is a leading publication on the latest security information, trends and technology, and products that include Access Control, CCTV/IP Surveillance, Intrusion Detection and Integrated Security Systems.

SST is packed with the latest developments in security technologies and trends, events, previews and reviews of major global trade shows, product launches and security installations worldwide.



Scan to visit our website

WE ALSO PUBLISH



TRADE LINK MEDIA PTE LTD

101 Lorong 23 Geylang #06-04 Prosper House Singapore 388399 T: (65) 6842 2580 F: (65) 6745 9517 W: www.tradelinkmedia.com.sg E: info@tradelinkmedia.com.sg



Milestone IP video surveillance technology protects Northern Europe's largest casino

Money is always changing hands with the thousands of guests who visit the largest casino in Northern Europe, Casino Copenhagen. And when money is in focus, so is security. Both security and service are taken very seriously at this casino, so they have installed an advanced IP video surveillance platform to ensure the safety of both guests and employees.

There is plenty to keep track of at Casino Copenhagen, Northern Europe's biggest - and Denmark's first - international casino, built as an extension to the Hotel Radisson BLU Scandinavia. The casino opened on New Year's Eve in 1990. It has 200 employees and thousands of guests who try their luck with poker chips, cards and slot machines - all of which demand that management have a good overview for top service and security.

"First and foremost just like all other casinos, we must conform to special laws and regulations that make strict demands for security and internal procedures. Furthermore, we want to provide the best possible service to our many customers, which includes, among other things, a strong focus on security. For that reason, we have chosen to work with the most advanced technology available on the market," says Surveillance Manager Jesper Frederiksen, Casino Copenhagen.

This technology is based on Milestone Systems' top-of-the-line



IP video open platform solution, XProtect® Corporate. With just a few clicks, an operator controls hundreds of cameras at the same time, viewing live or archived images from different servers simultaneously. In addition, the video material is easily exported

when the police want to use it as evidence.

"Previously we worked with analog videotapes, but they were very time consuming, especially if you wanted historical overviews of the recordings. With the IP video



solution from Milestone we can find precise sequences from many different angles, scroll back and forth quickly, synchronize time and zoom in for close-ups,” says Frederiksen and continues: “The issues often have to do with who has put a chip on the table at a certain time and for a particular amount. For example, we can scroll back through the images from two cameras and angles at the same time to see video details of a hand at a table with the person that hand belongs to.”

Human insight is an important parameter

If a dealer wants to resolve a disagreement between two players, he requests the pit boss to check the surveillance on a monitor that is near the playing area. These video images are shown simultaneously in the main control room, where security operators control the surveillance centrally and via radio contact, click to show the exact table or players to conclude the matter in question.

Several operators have the daily responsibility for surveillance of

the entire casino. In 2009, Casino Copenhagen also took over full control of security monitoring for the Hotel Radisson BLU Scandinavia. The video surveillance of the hotel, which was already based on the Milestone software, runs on a separate server, while the cameras are connected to the casino’s internal system via a Local Area Network (LAN) cable. The operators also keep an eye on the hotel’s video on a separate display from those for the casino activities. The surveillance incorporates indoor areas, the parking lots and entrances.

“I have worked in this branch for many years, so I know that technology in itself is not enough. The operators must also be savvy about human behavior, to know exactly what kind of conduct to look for. We are very attentive to educating our operators, not just in the art of surveillance, but we also train them in all the games we offer – they have to know them at least as well as our dealers,” explains Jesper Frederiksen.

It is not just disagreements and

complaints about cheating that the video surveillance helps to resolve: the images are also used to ensure that all internal procedures are upheld. Recordings are used by the police as evidence material, as well. Such evidence has already helped the police a number of times, and this is just as much due to the camera coverage as it is to the training and experience of the casino’s operators, confirms Jesper Frederiksen.

Big demands on system capacity and quality

The Danish company Info-Connect, a certified Milestone Partner, develops and produces specialized software solutions, and has installed the IT networks and surveillance system at Casino Copenhagen. According to Info-Connect director Rasmus Teilmann, it was imperative that the servers and storage systems could handle the huge capacity requirements that is needed for such a comprehensive video installation to function optimally – and this applies not just to casinos, but to any business using so many cameras running at full frame rate and with top image quality.

More than 200 cameras are connected to five servers, each with a storage capacity of 10 TB. This capability is critical for the video evidence the casino archives since the recordings from the gambling tables – according to the law – must be saved for 31 days, while the images from the cash transactions must be kept for 62 days.

Info-Connect installed a 10 Gb Ethernet network based on fiber optic cables that transmit all the images to the five recording servers, over which all the camera outputs are shared. On each server there is a redundant storage array with 10 TB of storage, so the casino



can manage the legal requirements for archiving recordings.

The system runs at full frame rate for live viewing and for all recordings at the gambling tables and cash transactions, but the frame rates are reduced for the traditional areas of surveillance like the doorways. This means that the manned surveillance is seen live at full speed, while the system utilizes as little storage space as possible and top video quality is maintained.

Technically, this is set up in separate video data streams, where the live video is shown as MPEG4 or H.264. The archived video images are stored as MJPEG at a frame rate that is determined in the Milestone software for the individual cameras. Frame rates can also be set to speed up on certain cameras based on rules that trigger this automatically for certain events or occurrences like motion in a certain area or at a particular time.

The video is transmitted back to the monitoring stations via the fiber

network. All the video encoders record with sound, as well, and this has a special advantage: for example, should a customer ask to put his money on the color red and there is a dispute, the operators can scroll back to determine precisely what did occur. Showing the results quickly resolves any disagreements between the dealers and customers.

Info-Connect has designed the entire surveillance solution and had a close dialogue with Milestone regarding multiple integrations and tools for optimizing the performance.

Info-Connect furthermore advises about ongoing upgrades to the newest platforms and features every time Milestone releases new software versions or modules. In this way, the solution is future-proof for the best return on their investment over time.

“The existing analog cameras from the previous system are still running but now through encoders so they can work with Milestone’s digital

platform. Among other things, we have also installed the fiber network that transmits all the images to the servers, where Milestone archives them, and back to the monitoring stations in the casino, where they can be seen with the Milestone XProtect Smart Client interface. An important parameter was the full frame rate capability that is optimal image quality and speed in the recordings. The system runs completely without any frame loss, which is especially critical when it comes to video from the tables,” says Rasmus Teilmann.

RFID integration

The law requires that all casino guests are registered. When customers arrive at the casino, a receptionist takes a photo via the guest registration software that Info-Connect has developed with the camera system. The video image is shown in the Milestone XProtect Smart Client together with extra information on the customer along with their ticket information in Milestone’s XProtect Transact





software. This integration makes the surveillance system act as added confirmation with the information on the guests, and reacts with an alert if there is a need for it.

All customers receive an access chip with RFID (Radio Frequency Identification), so the system shows the guest's photo on the surveillance screen when they go through the entrance to the casino. Security personnel are able to compare the guest's photo on the screen with the existing customer information. The intention is to avoid photo ID fraud and ensure fast, effective surveillance. The RFID technology is built in to the guest registration software

designed by Info-Connect and is fully integrated with the video software via the Milestone Software Development Kit (SDK).

The casino is also using Axis HD cameras that are well-tailored to applications like casinos. Via automatic zoom the camera is able to focus closely and sharply on a chip at the gambling tables, for example, and on motion, the camera zooms out again to register who the guest is with that chip. This occurs in one video stream, thereby reducing the number of cameras required to record everything.

Overall, Jesper Frederiksen believes that digital – and intelligent –

surveillance systems like this one based on the Milestone platform, are invaluable when one considers the risks that are connected with running a casino: "There are professionals out there who have made a career out of cheating both their co-players and the dealers. Our people are trained to spot these cheaters, and when that occurs we are talking about very large amounts of money. That's why it really pays for us to invest in such comprehensive technological solutions - and that also benefits our customers in relation to security and service."

For more information, please visit: www.milestonesys.com. *SST*

ADVANTECH
Building an Intelligent Planet

sg@advantech.com

Local Fleet Management TREK-733L

Long Haul Fleet Management TREK-303DH TREK-570

Utility Fleet Management TREK-773

Warehouse Management DLT-V8310

Smart Bus System TREK-574 & TREK-306

Field Service PWS-870

Digital Logistics and Fleet Management
Competence in Mobile Computing



Alfamart Secured by Bosch Security Systems – Indonesia

- Intrusion solution provides 24/7 protection within and around the stores.
- Detailed notifications give users firsthand knowledge of the situation onsite.
- Bosch -the chosen brand for one of Indonesia’s leading retailers.

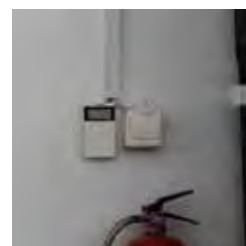
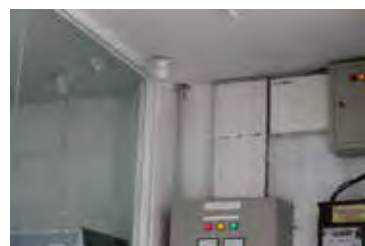
In 1999, Djoko Susanto and family established PT Sumber Alfaria Trijaya Tbk as a consumer goods trader and distributor. At the turn of the millennium in 2002, the company acquired 141 Alfa Minimart stores and rebranded them as Alfamart. They then entered the retail sector.

Alfamart is currently one of Indonesia’s leading retailers, serving more than 3.0 million customers daily, with approximately 10,300 stores across Indonesia. Some of those stores are located in remote regions with high crime rates. In order to counter robbery and nighttime trespassing, Alfamart turned to Bosch BSCP, Jakarta Alarm, for a cost-efficient 24/7-intrusion alarm system to monitor and deter crime within its compound.

Jakarta Alarm evaluated Alfamart’s sites and requirements and recommended a new system based on Bosch AMAX intrusion alarm system to monitor store activities. The system consisted of the AMAX 2000 Control Panel, AMAX Codepad, Blue Line Gen2 Tritech Motion Detectors that was easily installed and provided excellent catch performance, false alarm immunity and the GPRS/GSM Integrated Communicator.

The intrusion system was connected to Alfamart’s Branch office with the Bosch CMS D61000 receiver that allowed greater ease of access to the site’s information during different time intervals. Employees could check the alarm notifications quickly. It provided reliable and detailed intrusion information that indicated the situation in the store.

Alfamart expresses their satisfaction with the system. “Bosch offers great quality and reliable Intrusion alarms for us to monitor our branch security effectively,” said Frankie Poedjiharto – Alfamart Technical Support & Maintenance Manager.



For more information, please visit: www.bosch.com. **SST**



**MYANMAR
SECURITY EXPO**

www.MyanmarSecurityX.com



Myanmar Security Expo 2016

17-19 November 2016

Tatmadaw Exhibition Hall, Yangon, Myanmar

A dedicated trade exhibition for the security industry in Myanmar and the IndoChina region

SOURCE
LEARN
NETWORK

for latest solutions to safeguard your property, assets and resources

about the latest development in security and safety, challenges and case studies

with solution providers from over 17 countries/regions and build your business contacts

Visit www.MyanmarSecurityX.com for updates on the exhibition and seminars or contact huihiang.teo@mpinetwork.com for more information about visiting the event.

Organised by



Supported by



Badge Sponsor



Visitor Bag Sponsor





Small but extremely Powerful

Independent TB3p base stations from Airbus Defence and Space offer optimum functionality in buildings

For fire fighters, a fire that requires the evacuation of hundreds of people can quickly become a nightmare if communication between rescue and support staff does not function optimally. When fire fighters arrive at a burning shopping centre, they rely on the communication infrastructure of TETRA digital radio. Their terminals must operate perfectly in the building. The commander cannot be hampered by poor or repeatedly interrupted radio links and must always be able to understand his or her colleagues when they talk on the radio. Such a scenario is not only a challenge for the fire brigade, but also for the planners of the radio infrastructure in buildings.





The building owners frequently choose a technical solution with repeaters: these receive radio signals from TETRA open-field base stations and forward the signals indoors. Nevertheless, it is not always possible to ensure entirely interference-free communication. Interference and radio problems can occur as the radio activity in the building has repercussions on digital radio provision in the open. Conversely, high communication volume in neighbouring open-field radio cells can impair communication in the building concerned.



These possible disadvantages of the repeaters can be avoided owing to the efforts of base stations working independently in the building.

Base stations are compact and operate using their own independent frequencies. This technology is highly redundant and extends the network coverage, especially indoors. Interference is also precluded. A base station working in independent trunked mode (TMOa) is particularly suited to operators of shopping centres, banks and other smaller buildings accessible to the general public. Such a base station generally has the same performance features as TETRA base stations, which are attached to a network. But a base station in independent trunked mode functions independently of the network – and is cost-effective as well.

Airbus Defence and Space has developed the TB3p Base Station to provide additional services for in-building systems, including individual or multicast calls and also, when required, broadcast calls. Emergency calls can also be handled in the TMO group selected. Up to three simultaneous multicast calls are supported by the single carrier variant. The service scope of the base station also includes data services such as status and short data transfer (SDS).



The TMOa TB3p Base Station also has a built-in interface with the central fire alarm system. This enables it to be activated in just a few seconds. Thanks to various filter functions, only terminals from the security forces' digital radio network can log in to the independent TMOa cell. This can be done using the "Dynamic Air Interface Migration" and "ITSI attach" functions on radio sets from various vendors. Security filters ensure that terminals that do not support TEA2 air-interface encryption and end-to-end encryption are rejected. Self-tests of the base station help to check the TMOa TB3p regularly, and remote configuration and maintenance are also possible.

Under such conditions, the above scenario would lead to a happy ending: the fire brigade would be able to communicate without any problems, quickly and on a coordinated basis in order to evacuate the people from the building. Even in disastrous circumstances and when neighbouring open-field base stations fail completely, the TETRA TMOa TB3p Base Station continues to operate.

For more information, please visit: www.airbusdefenceandspace.com. **ESST**



Dahua Technology Launches HDCVI3.0, Next-Generation Analog- To-HD Solution

Now With Greater Compatibility and Intelligent Features

Dahua Technology, a world-leading manufacturer of video surveillance products, today announced the release of HDCVI 3.0, its next-generation analog-to-HD video surveillance solution.

HDCVI, also known as high definition composite video interface technology, was technology developed and introduced by Dahua in November 2012 to address an industry need. Since then, it has become a standard for HD-over-coaxial-cable video transmission that allows reliable, cost-effective long-distance HD transmission, offering powerful performance and functionality.

Dahua HDCVI3.0 technology includes full compatibility with a wide range of industry platforms and technologies, higher video resolutions such as ultra HD and 4K, as well as intelligent functions equal to those in IP systems.

“The worldwide adoption of Dahua HDCVI technology is testament to its ability to address an industry need,” said Liquan Fu, President of Zhejiang Dahua Technology Co., Ltd. “With nearly two hundred million analog security surveillance systems deployed globally, HDCVI 3.0 is expected to have a far-reaching impact on the security industry for years to come.”

Full Compatibility

Dahua HDCVI 3.0 effortlessly integrates itself with five popular industry platforms—HDCVI, AHD, TVI, IP and analog—and can accept input from IP systems. DVRs equipped with HDCVI3.0 technology are able to act as an access point to integrate with external passive infrared sensors, smoke detectors and other type of sensors to further provide comprehensive security services.

Ultra HD

Dahua HDCVI3.0 delivers a true end-to-end ultra HD experience to existing coaxial systems. It is the first technology that utilises 4-megapixel resolution over coaxial cabling. Simultaneously, it also offers Dahua Starlight night vision





technology that includes 2-megapixel resolution at 0.008 lux illumination and 120dB WDR. Additionally, it features H.265 compression standard that allows the system to save up to 50% bandwidth.

Intelligence

Dahua HDCVI 3.0 features rich intelligence including facial recognition, people counting, heat map, smart tracking, and smart scene adaption. Other basic smart features include intrusion, virtual tripwire, missing object, abandoned object and scene change. Defogging and a voltage overload alarm are also included.

Simplicity

HDCVI 3.0 systems offer the same simplicity and ease of installation as analog systems of the past as the cameras can be plugged into the DVRs using coaxial cables. HDCVI 3.0 systems are also low-cost and easy-to-build. Video travels long distances with no delays/latency and power can be directly supplied over coaxial cable.

Another advantage of HDCVI 3.0 is the transmission distance compared to other analog systems. When transmitting general media, the signal can be extended as far as 1,200 meters by using 75-5 cable, with a low signal distortion rate.

HDCVI 3.0 not only offers high definition across long distances, but also features no-latency capability for outstanding real-time performance, because there is no compression processing required to maintain its original effect, resulting in vivid image quality.

For more information, please visit: www.dahuasecurity.com. SST



Model: Eco-Savvy 3.0 Series Product Portfolio

By: Dahua Technology

① www.dahuasecurity.com

- Contains enhanced, performance-boosting chip which combines intelligence, efficiency, and ease-of-use with modern video surveillance.
- Eco-savvy 3.0 cameras are capable of delivering real-time 1080p video streams at 60 fps, 4Mp video streams at 30fps and 4K video streams at 15fps.
- The latest series has features that allow H.265 compression to cut bandwidth by half, lowering bandwidth further.
- Features an impressive range of smart detection features- including face detection, tripwire detection, and intrusion detection.
- Contain starlight technology, WDR image enhancement technology, triple video streams, and Intelligent Video Surveillance (IVS).
- Class-leading wide dynamic range (120dB) functions well despite bad lighting conditions.



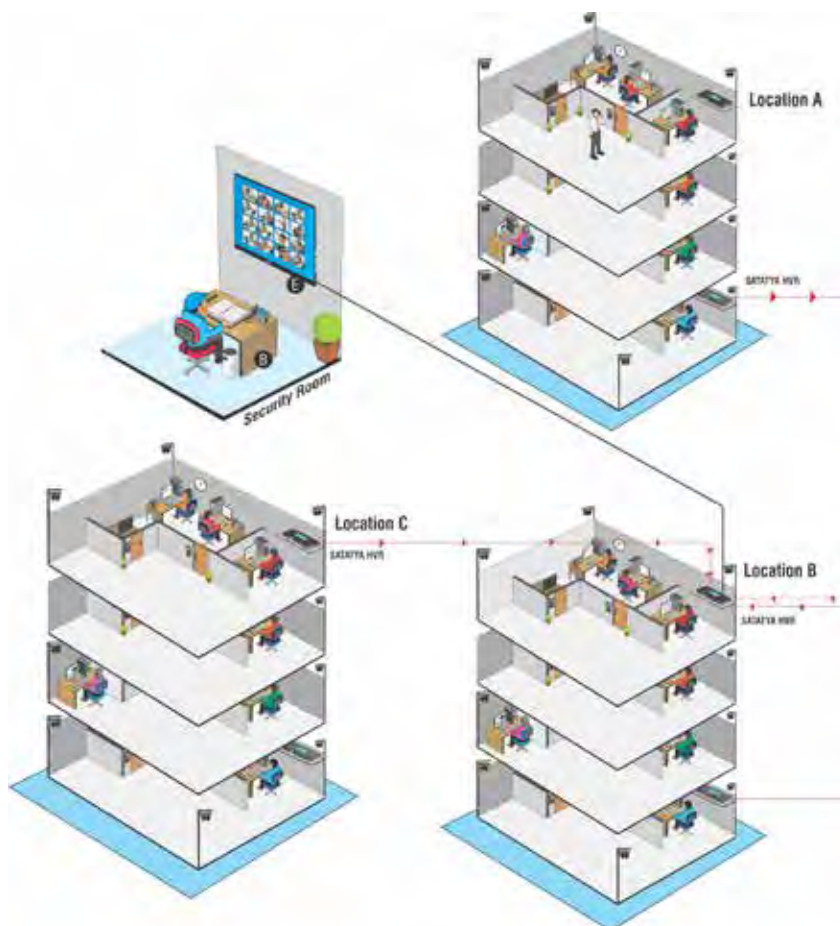
Model: Matrix SATATYA Video Surveillance Solution

By: Matrix

① www.MatrixSecuSol.com

CASCADING: Simplify Centralized Management of cameras. Reduce cost up to 30%.

- Managing cameras at different locations involves managing a server and multiple monitoring devices along with complicated cabling.
- To simplify this, Matrix SATATYA Video Surveillance solution allows managing multiple recording devices (NVR or HVR) through a single device without requiring a server to run the CMS application.
- This single device acts as the master device, allowing management, monitoring and playback of up to 19 other devices and a total of 500 cameras.
- This solution brings down the overall cost of a multi-location or a multi-floor application by reducing cabling cost, eliminating dedicated server and using a single monitoring device instead of multiple devices.





Model: Zenmuse Z3

By: DJI

www.dji.com

- DJI's first integrated aerial zoom camera optimized for still photography.
- Expanded possibility for industrial and professional use-inspection and surveying.
- Offers up to a 7x zoom. The camera incorporates DJI's leading gimbal technology, which has been upgraded to work optimally with its zoom capabilities.
- Negates need to be closer to object. Can maintain distance and still zoom in for sharp, detailed images.
- Zenmuse Z3 is compatible with the Inspire 1, Matrice 100 and Matrice 600 drones.
- Uses the company's dedicated HD video downlink, Lightbridge and Lightbridge 2, providing up to 3.1 miles (5.0 kilometers) of HD transmission range.
- Fully integrated into the DJI GO app and provides a seamless user experience- including a live feed from the camera and the ability to change camera settings- swipe to zoom in and out, capture photos or video and to activate intelligent flight modes.
- Drone's remote controller can activate camera controls, such as capturing photos and video and zoom.
- Weighs 262-gram and achieves up to a 7x zoom via a 3.5x optical zoom, combined with a 2x digital zoom.
- An effective zoom range of 22 millimeters to 77 millimeters.
- Maximum aperture of F2.8 and F5.2 at 22 millimeters and 77 millimeters, respectively.
- Small movements can be magnified as camera zooms in.
- Custom-designed reaction wheel works in tandem with the normal yaw motor to allow for more refined and controlled movement and greater stability.
- Features the same highly refined Sony 1/2.3-inch sensor that is found on the Inspire 1 and the Phantom 4, increasing image quality.
- Able to shoot still images at 12 megapixels with additional Adobe DNG Raw Support for maximum editing options in post-production. The camera also shoots videos at up to 30 FPS in 4k resolution.
- Flight time with the model is up to 19 minutes on the Inspire 1. Pilots can extend flight time up to 30 minutes with the dual-battery-equipped M100 and up to 39 minutes with the M600.

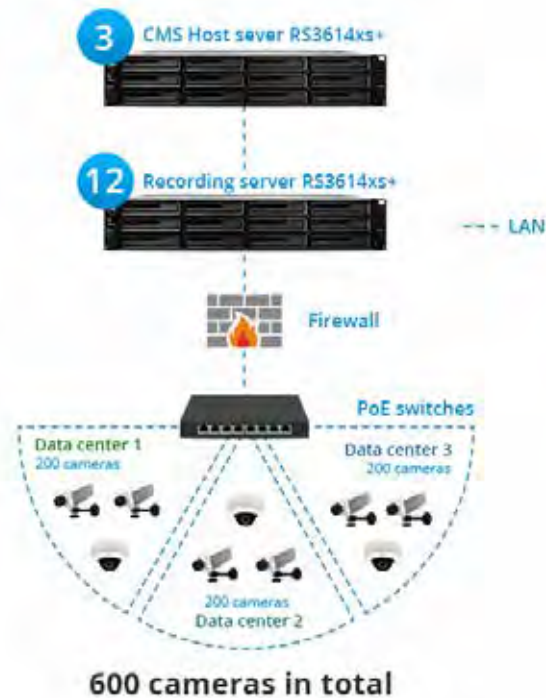


Model: Synology Warehouse & Data Center Surveillance Solution

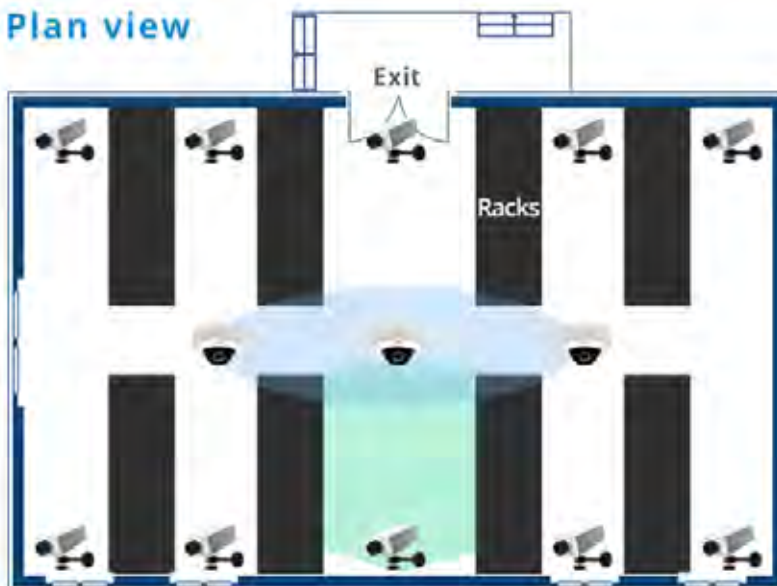
By: Synology Inc.

① www.synology.com

- Able to circumvent narrow aisles and blind spots for surveillance.
- Able to meet requirement for 24/7 surveillance operation without downtime. Synology Surveillance Station supports fisheye and corridor modes that optimises camera coverage.
- Manages all servers and cameras from a single pane of glass and enhances efficiency.
- RS3614xs+ delivers exceptional performance with comprehensive redundancy mechanism.
- Supporting failover, power redundancy and passive cooling, it ensures high system stability and uninterrupted service.



Plan view



Fisheye and corridor modes optimize camera coverage



Model: IRS1304 PTZ IP camera

By: Lilin

📍 www.LILIN.us

- Captures crisp, high-resolution surveillance video even when both IR illumination and PTZ (Pan-Tilt-Zoom) functionality is required.
- Reliable, secure and cost-effective.
- IRS1304 PTZ IP camera is able to capture 1080p HD video in near total darkness without the need for external IR illuminators.
- Adaptive IR illumination technology automatically increases light intensity when the camera is zoomed in, while decreasing it when it is zoomed out.
- IR LED system is fully integrated into camera operations and illuminates the PTZ field of view- regardless of whether panning right or left, or zooming in or out.
- LEDs adjust automatically up to a maximum of 150 meters to enable large areas to be monitored with little to no ambient light.
- 30x optical zoom.
- Weather-resistant IP66 rating.
- IRS1304 with IR illumination “on” will capture images down to 0.0 lux or the equivalent of near total darkness.
- Preset function allows up to 128 preset positions for scanning multiple areas to be viewed automatically at predetermined time intervals without the need for an operator to control the camera.
- LILIN’s user-friendly interface allows for easy pan, tilt and zoom control through the recorder, web browser, or the LILIN Viewer application for mobile devices.
- The camera’s IP66-rated housing is designed to withstand rain and dust for operation under a multitude of harsh weather conditions at temperatures ranging -40° F to 122° F.
- It is ONVIF compliant for simple, cost-effective integration with third-party equipment.



Suggested applications:

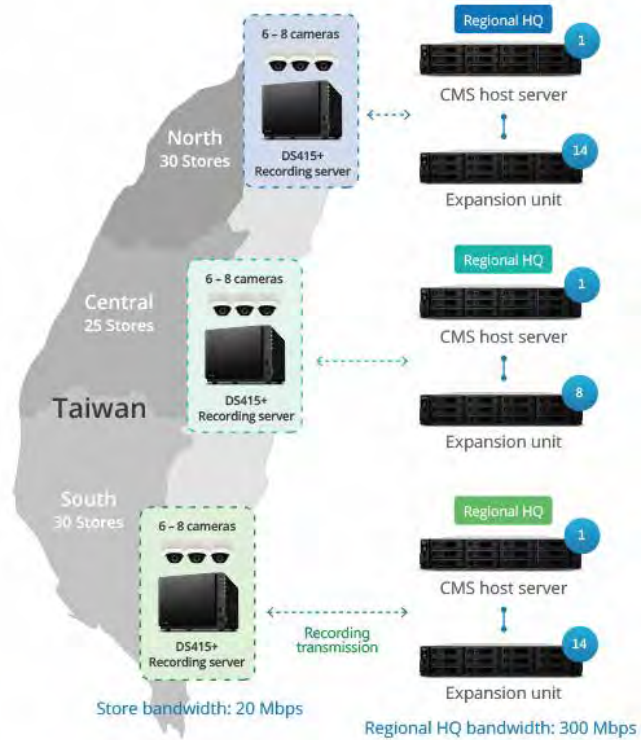
- Areas under trees.
- Along walkways at university campuses, colleges and schools.
- Shaded areas between buildings.
- Dark corners in backyards found on most larger residential properties.
- Challenging infrastructures such as mining sites, hydroelectric power plants, highways, railways, or chemical/hazardous environments and between automobiles in parking lots.

Model: Petabyte-Scale Surveillance Solution

By: **Synology Inc.**

① www.synology.com

- CMS-compatible system.
- High ease of playback of recordings.
- Expansion units can be added to Synology NVR gradually to provide up to 1 PB of storage capacity and lower the costs of initial deployment.
- Scheduled backup of recordings minimizes bandwidth consumption during business hours.
- Supports automatic recording backup rotation with configurable number of versions and backup schedule to save storage space.
- Synology CMS manages all servers and cameras from a single monitor to enhance efficiency.
- Recordings stored in regional headquarters can be searched through indexed information such as motion detection, missing objects, time and date, and then downloaded to local stores for playback.



Security Solutions Today is now on issue!
issuu.com/securitysolutionstoday





Model: Artesyn SharpStreamer™ Pro Add-on Acceleration Card

By: *Artesyn Embedded Technologies*

① www.artesyn.com

- Application-specific Evaluation through Remote Access Lab.
- Brings Skylake performance to video processing for OTT video streaming, mobile network optimization, CDNs, and broadcast distribution in standard servers and cloud networks.
- Based on the new Intel® Xeon® E3-1578Lv5, which uses the Skylake-H microarchitecture.
- Developers can evaluate the performance of their specific applications on the SharpStreamer Pro card, which offers a significant performance and functionality boost in a standard PCI Express form factor for compatibility with industry-standard servers.
- Targets 4K and HD HEVC encoding and transcoding requirements in demanding linear broadcast and high-density OTT multiscreen applications.
- Customers can access the remote customer trial lab using the 'Request a Demo' form on the product web page.
- The SharpStreamer Pro card is available in full- or half-length versions with one or two processors, each of which is capable of up to eight streams of 1080p30 H.265/HEVC transcodes, or four streams of 1080p60 H.265/HEVC transcodes.
- Each processor can support one 4KP60 HEVC, or up to two 4KP30 HECV transcodes.
- The SharpStreamer Pro card is equipped with a software development kit comprised of the Intel® Media Server Studio with Intel® HD Graphics' hardware acceleration, monitoring and processor subsystem operating system and management tools for easy integration with server host processing environments.
- Artesyn's SharpStreamer add-in card portfolio offers a range of GPU-accelerated devices in small, scalable PCI Express card footprints that are easily deployable in off-the-shelf platforms.
- The breadth of offerings enables content owners, broadcasters and service provider networks to lower the cost of handling OTT video and speed the deployment of high-density video transcoding and multiscreen delivery.
- Artesyn add-in cards can easily be deployed in popular, high volume servers such as Dell PowerEdge R230, R430 and R720, and HPE ProLiant DL360 and DL380 families in addition to numerous 1U standard servers.
- SharpStreamer add-in cards can also be used in Artesyn's MaxCore™ platforms, optimized for hosted cloud and high-density deployments and offering a significant reduction in OpEx through power consumption savings.

Portfolio also inclusive of:

- SharpStreamer card: Featuring four Intel® Core™ i7-5650U processors and Intel® HD Graphics 6000 in a three-quarter length PCI Express add-in card.
- SharpStreamer Mini card: Featuring one or two Intel Core i5-5350U processors and Intel HD Graphics 6000 in a half-length PCI Express add-in card.

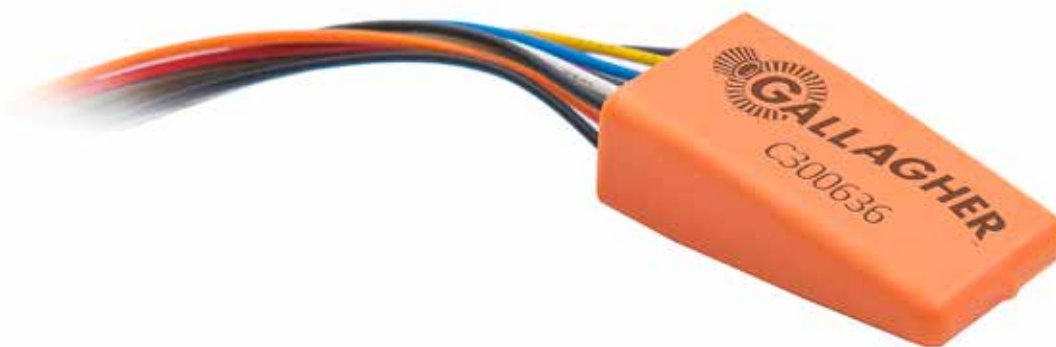


Model: New Class 5 End of Line Module (ELM)

By: **Gallagher**

① <https://security.gallagher.com/>

- The Class 5 ELM protects high value assets from sophisticated attacks.
- Uses the latest digital encryption security standards to protect against all known vulnerabilities, ensuring alarms are always reported should sensors come under attack.
- The Gallagher Class 5 ELM secures weak links in security systems from non-authenticated sensor inputs communicating unencrypted with controllers by extending full end-to-end authentication and encryption from highly secure Gallagher devices to any PIR or sensor in a system.
- The Gallagher Class 5 ELM has the ability to protect against all known vulnerabilities and sophisticated attacks, including sensor tampering, disablement or insider attack.
- Gallagher security systems can now be configured to comply with the highest security level of the AS/NZS 2201 Intruder Alarms Standard.
- Component of an AS/NZS 2201 intruder alarm system.
- The Gallagher Class 5 ELM provides physical input connections with the sensor, including alarm contact, tamper contact and anti-masking contact (available for sensor devices that have an anti-mask output that can be directly wired into the ELM).
- Features all the benefits of standard Gallagher device functionality, including field upgradeable code to improve device longevity; plug and play authentication for quick and secure installation; and multiple device support on the same wiring run.
- Simple to install.
- The Gallagher Class 5 ELM is a small potted PCB device designed to easily fit inside a tamper-proofed junction box or the housing of a high-grade alarm sensor device, such as a PIR or contact sensor.
- Its small size and leveraging of Gallagher system flexibility to allow re-use of existing site wiring means it eliminates the need to run additional wiring on install.





Model: MOTOTRBO™

By: **Motorola Solutions**

① www.motorolasolutions.com

- Next-generation MOTOTRBO™ radios feature longer battery life, indoor location-tracking and integrated Wi-Fi allowing all radios in a system to be reprogrammed simultaneously without taking them out of users' hands.
- Integrated Wi-Fi solution that helps reduce the update process to a matter of minutes by eliminating the need for employees in the field, classroom or warehouse floor to physically drop off equipment at the office to receive software upgrades.
- Up to 29 hours of battery life gives workers more time to focus on the task at hand.
- Better man-down alerts and indoor location tracking keep workers safe.
- Advanced features and functionality enhance productivity and efficiency.



Model: SLR 8000

By: **Motorola Solutions**

① www.motorolasolutions.com

- **Next-generation MOTOTRBO Repeater**

The SLR 8000 represents a huge leap forward in design and technology. Based on a wealth of field experience, customer feedback and technological innovation, the product delivers outstanding performance and reliability for your business two-way radio system. From an efficient modular design to flexible installation options, the SLR 8000 is truly the next generation in repeaters.



- **High Reliability**

The SLR 8000 offers round-the-clock reliable operation, even at its continuous full transmit power of 100W. The high-quality design has been validated through Motorola's Accelerated Life Testing (ALT) programme, and meets stringent quality criteria. The product has a next-generation receiver design, with high sensitivity and improved noise blocking, so you can be confident of clear voice quality, even in the worst conditions.

- **High Performance**

With its 100W transmitter output and high sensitivity receiver input, the SLR 8000 delivers radio coverage to an enormous area. The efficient modular design only requires 2U of rack space, and has very low power consumption, yielding very low cost of ownership. The SLR 8000 supports the full MOTOTRBO feature set and is compatible with all the MOTOTRBO system architectures. The IP interface allows you to build applications and consoles directly on your system.

- **Total Flexibility**

The SLR 8000 can be customized to suit your operation. There are options for an internal preselector amplifier and antenna relay module, offering you a true one-box installation. You can also opt for an internal wireline card if you need tone control capabilities, four-wire audio and additional external inputs.





Model: MOTOTRBO Capacity Max

By: Motorola Solutions

www.motorolasolutions.com

- **High-performance, Next Generation Digital Trunking**

- The MOTOTRBO Capacity Max trunked radio system is built on a distributed architecture for voice and data. Control is centralised, but traffic routing is optimised to minimise cost and maximise performance.

- Capacity Max goes beyond the core interoperability of the DMR standard to bring you enhanced functionality. Features and applications such as Digital Emergency, call queuing prioritisation and over-the-air programming give you the tools you need to make your business successful.

- **Central Management for Complete Control**

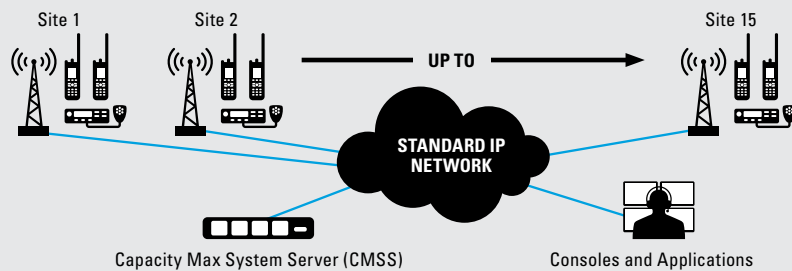
- Capacity Max gives you centralised control of everything you need to manage your system. System management software gives you command of infrastructure, devices and talk groups, all organised in a logical way to make you more efficient and effective. Updating and upgrading is easier too, with processes for pushing out software and firmware patches to the system server, infrastructure and radios.

- **High Security**

- Security is a core component of the Capacity Max trunked radio system. All voice, data and control traffic within the IP network is encrypted, and all radios are securely authenticated. You can even remotely disable and re-enable a device if it is misplaced or stolen.

- **Easy Migration**

- Capacity Max fits seamlessly into existing MOTOTRBO systems, allowing you to easily transition to Capacity Max via a simple, software update.



- **Increased Capacity, Smooth Scalability**

- MOTOTRBO Capacity Max makes it easy for you to grow your system as your needs evolve. A system can support up to 15 sites with up to 3,000 users per site.

- Up to six additional data repeaters per site can be dedicated to support intensive data use for texting, GPS location updates and other applications such as personnel management and alarm notifications. Compatible with our wide portfolio of MOTOTRBO radios, you have the flexibility to tailor the solution to your operations.

- **DMR Tier III Compliant**

- The system supports all the innovative features you'd expect from MOTOTRBO, from advanced location tracking to enhanced security and roaming. For customers who need a system that supports other vendors' radios, Capacity Max is DMR Tier III compliant and will support all the features defined for interoperability.

- **High Resiliency, High Availability**

- Capacity Max has been designed for high performance, high availability and high resiliency. Optional redundant system servers, IP switches and on-site control channel repeaters can be added to ensure that no single failure can bring your system down. You can also provision upto three alternate control channels per site for ultra-high system availability.

Model: Enterprise Buildings Integrator (EBI) R500

By: **Honeywell**

① www.ebi.honeywell.com

- Enables Greater Building Connectivity And Intelligence For Today's Smart, Connected Buildings.
- Delivers real-time facility data for bottom-line benefits.
- EBI R500 leverages the connectivity of today's buildings to help make them strategic assets to organizations.
- The new features help facility managers better streamline management and decision-making, promoting improved business efficiencies and providing greater control over operations.
- Arms organizations with tools to help turn complex data into real-time business outcomes that can mean reduced operating costs, better occupant experiences and improved occupant safety.
- Award-winning building management system that facilitates the integration of systems relating to security, comfort, life safety and energy control, among other functions.
- It gives users a single point of access and consistent view of information and resources through a seamless "Integration of Things" that enhances a user's ability to monitor, manage and protect a facility, campus or multi-site operation.
- EBI communicates with industry-leading open protocols like BACNet®, OPC® and LonWorks®, which helps customers integrate with third-party software and hardware and benefit from the scalability and flexibility that come with an interoperable architecture.
- Current customers can easily migrate to the latest release, providing them with the new functionality, as well as continued returns on their investment.
- EBI R500 improves facility managers' ability to turn building data into actionable insights to deliver real outcomes in real time. New features include:
 1. **Increased Data Point Capacity** – EBI performance improvements have increased point capacity by 200 percent, helping increase overall building connectivity while reducing IT costs with fewer EBI servers required. Facility managers can gain more granular levels of building data such as room temperatures, humidity levels, air quality, access control points and video surveillance feeds.
 2. **Enhanced IT Compliance** – EBI is now compatible with the latest Microsoft Windows® operating system and Windows 2012 Server, promoting up-to-date IT compliance and security.
 3. **Cloud and Mobile Connectivity** – EBI features a new mobile application that provides facility managers with greater situational awareness of building performance and operations. Facility managers can now receive push notifications to their smartphones and tablet devices on possible building system and equipment issues before system failures or disruptions to the organization's operation. The mobile app also allows for remote access to and management of building systems and data. Additionally, EBI is cloud enabled and can connect with a range of Honeywell cloud services, some of which analyze facility data and facilitate decisions on improving building performance and reducing energy costs.



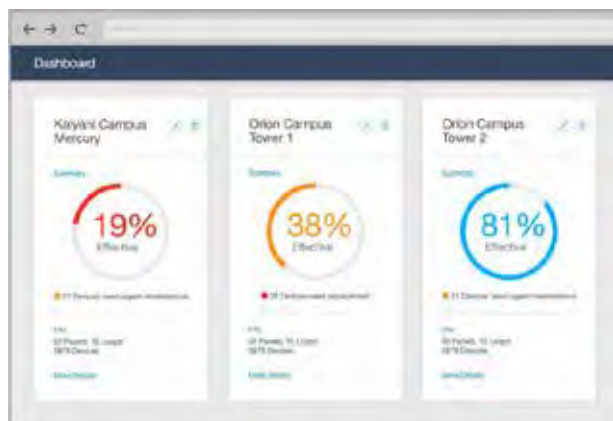
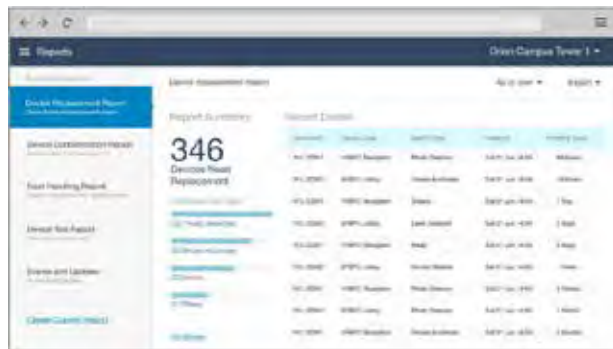
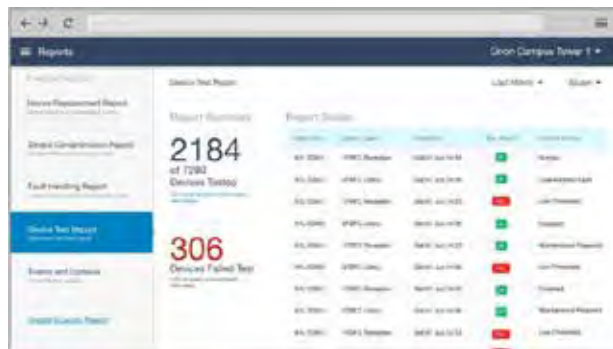


Model: Honeywell eVance™ Facility Manager

By: Honeywell Security and Fire

www.honeywell.com

- Changes the way facility managers manage the fire systems by transforming complex and disparate fire panel data into intuitive visualisations and actionable insights.
- Honeywell eVance™ Facility Manager is the first next-generation software-as-a-service (SaaS) offered by Honeywell Security and Fire.
- eVance Facility Manager is a game-changer that uses cloud-based SaaS technologies to give facility managers greater insight on the health of their fire system and enables better decision making.
- Ensures that the next dollar spent will deliver the most bottom-line impact.
- Seamlessly integrates with Honeywell Notifier™ fire panels and transforms complex and disparate fire panel data into intuitive visualizations and actionable insights.
- eVance Facility Manager changes the way facility managers manage the fire systems by presenting both a big picture and granular device-focused data in multiple graphic-driven, easy-to-understand formats.
- With access to a portfolio of automated digital reports, including fault handling, testing and replacement reports, or custom reports, it provides facility managers with the information to:
 - Track fire system effectiveness
 - Identify fire safety risks earlier
 - Perform predictive maintenance
 - Optimize device inventory
 - Analyze system performance allowing facility managers to be confident of using the fire system to its fullest potential
- eVance Facility Manager enables facility managers to cultivate greater returns from existing infrastructure investments and promote visibly better business outcomes by reducing risk, reducing maintenance costs and increasing operational efficiencies.



Intuitive actionable information:**1. Amplify your existing investment:**

- **Actionable Reports**
With instant access to a portfolio of automated digital reports, eVance Facility Manager empowers facility managers to manage the fire system, from the big picture to a granular device-focused approach. Standardized digital reports ensures time saving and easy compliance.
- **Intuitive Dashboards**
Collecting data is important, but transforming the data into meaningful actionable information is crucial to improving the business. eVance Facility Manager provides graphic-driven visualizations of real-time data encouraging proactive fire system management, ensuring that important issues remain top of mind.
- **Mobile Connectivity**
Facility managers are mostly on-the-go, managing conflicting priorities and operational challenges. With the eVance Facility Manager, they can use a smart phone or tablet device for 24/7 remote access promoting productivity and responsiveness.

2. Increase operational efficiencies and reduce operational costs:

- With actionable information at their fingertips, eVance Facility Manager empowers facility managers to automate processes, reduce human-error and increase operational efficiencies.

3. Be confident, reduce risk and promote compliance:

- With the powerful combination of eVance Facility Manager and the existing Honeywell Notifier fire systems, facility managers can be confident that their facility is well protected with a compliant and robust fire system, reducing risk, protecting people and promoting business continuity.





Model: Matrix Satatya NVR64P: 64 Channel Network IP Video Recorder

By: Matrix

① www.MatrixSecuSol.com

- IP video recorder suitable for enterprises.
- Provides high resolution security solution.
- Built on an i3 Core processor for smooth and reliable performance.
- Ensures organizations get preventive and effective security with rich features like adaptive recording for saving storage space, camera-wise recording & backup retention, calling from mobile app and email notification with Snapshot.
- E-map and Cascading Features ensure effective monitoring, never letting organizations miss unwanted events.

Key Features:

Cascading

- Connects multiple NVRs and HVRs from a single device without a server.
- Reduced cabling, server and individual monitoring device cost.

Adaptive Recording

- Automatically changes frame parameters during recording for a configured period of time.
- Saves storage and bandwidth, providing extra storage days.

Camera-wise Recording Retention

- Retains recordings based on priority of cameras.
- Utilizes available storage space as per requirement.

Scheduled and Manual Backup

- Scheduled and manual backups to FTP, NAS and USB.
- Safeguards data through centralized storage.



Calling from Mobile App

- Able to call a SIM number or an extension (Matrix EPABX) assigned to any camera directly from the mobile device.
- Calls the right person at the right time, ensuring preventive security.

Notifications

- SMS & Email notifications with Snapshot, TCP based notifications.
- Gets evidence and takes instant actions against any suspicious activity and ensures safety.

Auto Configuration of Cameras

- Adds cameras automatically to video recorders in the defined IP range.
- Quick configurations to help save time.

Integration

- Database level integration with Matrix Access Control.
- Complete security for users.

Interoperability

- All ONVIF, RTP or RTSP compliant cameras can be connected to Matrix devices.
- Flexibility of the video surveillance solution.

Video analytics (If Camera Supports)

- Quick decision making.
- Ensures preventive security.

TRADE CONNECTION

Home page announcements for added business opportunities.
Register now, contact:

Tel: (65) 6842 2580 Fax: (65) 6842 2581 / 6745 9517

E-mail : info@tradelinkmedia.com.sg



- RFID Electronic Key Management System
- Guard Tour System
- Vehicle Access Control System
- Contactless Smartcard System
- Biometrics Verification System
- Multi - Technology Card Reader



WE THINK SECURITY

Blk 28 Kallang Place #06-12/14
Singapore 339158
Tel: (65) 6741 5200
Fax: (65) 6741 6200
RCB No: 19880111W
Email: info@coselec.com.sg
www.coselec.com.sg

This space could be yours for

US\$				Color
1x	3x	6x	9x	12x
500	440	380	320	260

S\$				Color
1x	3x	6x	9x	12x
775	682	589	496	403



• S O U T H E A S T • A S I A • CONSTRUCTION

Features civil and structural projects in the region and all over the world, the latest in construction equipment, materials, technology and industry news.

Security Solutions Today

Showing products in categories that include access control, CCTV/surveillance systems, integrated security systems, detection and alarm systems, fire extinguishing systems and passive fire protection.



With a solid network of designers, installers, specifiers and rental specialists in the lighting, audio, and visual solutions industries, LAVA has what it takes to place your brand in the spotlight.

SOUTHEAST ASIA **building**

Asia-Pacific's leading source of information for professionals interested in the technique and technology of quality architectural, interior and landscaping design.

bathroom + kitchen today

A regional trade magazine designed to reach a progressive, diverse and dynamic audience of the bathroom, kitchen and ceramic industries.

lighting today

A publication that aims to promote lighting's purpose as an integral part of realising a quality built environment, emphasising the importance of the role of professional lighting designers in the total design process.



Scan to visit our website

TRADE LINK MEDIA PTE LTD

101 Lorong 23 Geylang #06-04 Prosper House Singapore 388399 T: (65) 6842 2580 F: (65) 6745 9517

W: www.tradelinkmedia.com.sg E: info@tradelinkmedia.com.sg



Model: Impulse Sit/Stand Consoles

By: *Winsted*

① www.winsted.com

- A great choice for an ergonomic and operator comfort upgrade.
- Two independently adjustable, ergonomically curved work surfaces.
- Sit/stand consoles also provide movement adjustability to meet the needs of each individual operator.
- Allows user to alternate between sitting and standing throughout the workday.
- Dual work surfaces adjust from 30" to 46" high at the touch of a button.
- Both work surfaces feature two electric-lift legs and can support 520 pounds.
- All standard Impulse consoles include Graphite Nebula laminated work surfaces with our proprietary Safeguard Edge.
- For added versatility, all Impulse consoles come complete with our innovative Versa-Trak monitor mounting system.
- Consoles can be used as stand-alone workstations, or combined to create a custom configuration.





Subscription Form

Fax your order today
+65 6842 2581

(Please tick in the boxes)

Southeast Asia Building



SINCE 1974

1 year (6 issues)

Singapore	S\$45.00
Malaysia / Brunei	S\$90.00
Asia	S\$140.00
America, Europe	S\$170.00
Japan, Australia, New Zealand	S\$170.00
Middle East	S\$170.00

Bathroom + Kitchen Today



SINCE 2001

1 year (4 issues)

Singapore	S\$32.00
Malaysia / Brunei	S\$65.00
Asia	S\$80.00
America, Europe	S\$130.00
Japan, Australia, New Zealand	S\$130.00
Middle East	S\$130.00

Southeast Asia Construction



SINCE 1994

1 year (6 issues)

Singapore	S\$45.00
Malaysia / Brunei	S\$90.00
Asia	S\$140.00
America, Europe	S\$170.00
Japan, Australia, New Zealand	S\$170.00
Middle East	S\$170.00

Lighting Today



SINCE 2002

1 year (4 issues)

Singapore	S\$32.00
Malaysia / Brunei	S\$65.00
Asia	S\$80.00
America, Europe	S\$130.00
Japan, Australia, New Zealand	S\$130.00
Middle East	S\$130.00

Security Solutions Today



SINCE 1992

1 year (6 issues)

Singapore	S\$45.00
Malaysia / Brunei	S\$90.00
Asia	S\$140.00
America, Europe	S\$170.00
Japan, Australia, New Zealand	S\$170.00
Middle East	S\$170.00

Lighting Audio Visual Asia



SINCE 2013

1 year (4 issues)

Singapore	S\$32.00
Malaysia / Brunei	S\$65.00
Asia	S\$80.00
America, Europe	S\$130.00
Japan, Australia, New Zealand	S\$130.00
Middle East	S\$130.00

IMPORTANT Please commence my subscription in _____ (month/year)

Personal Particulars

NAME: _____

POSITION: _____

COMPANY: _____

ADDRESS: _____

TEL: _____ FAX: _____

E-MAIL: _____

Professionals (choose one):

- Architect
 Landscape Architect
 Interior Designer
 Developer/Owner
 Property Manager
 Manufacturer/Supplier
 Engineer
 Others

I am sending a cheque/bank draft payable to:

Trade Link Media Pte Ltd, 101 Lorong 23, Geylang, #06-04, Prosper House, Singapore 388399
RCB Registration no: 199204277K * GST inclusive (GST Reg. No: M2-0108708-2)

Please charge my credit card (circle one): Amex / Diner's Club

Card Number: _____ Expiry Date: _____

Name of Card Holder: _____ Signature: _____



Model: LGA80D dc-dc module

By: Artesyn

www.artesyn.com



- One of the highest current density rated, non-isolated DC-DC Modules in the industry.
- Market-leading efficiency of 95.5% typical.
- Footprint of just 1 x 0.5 inches or 25.4 x 12.5mm.
- Two independent and configurable 40 amp.
- 100 watt outputs which can also be combined to a single configurable 80 amp, 200 watt output.
- Design engineers can also generate higher current rated rails by connecting up to 4 units in parallel so that up to 320 amps can be supplied as a single power rail.
- Both analog control and digital control functions are enabled on this unit.
- LGA80D can be controlled with resistors or controlled and monitored by using the industry-standard PMBus digital interface.
- Applications such as graphics, data or video processing, high power devices- server processors, FPGAs, supercomputers, network, storage and telecom equipment- benefit from the current density, efficiency and flexibility of control of Artesyn's LGA80D digital dc-dc converter.
- The input voltage and output voltage specifications remain the same in any configuration (input is defined as 7.5 V to 14 V and the output voltage adjustable within the range of 0.6 V to 5.2 V).
- Broad range of semiconductor devices and applications can be supported.
- Available for testing on demonstration board.

ADVERTISERS' INDEX

ADVANTECH	79	ITE TECH	11
BIG 5 CONSTRUCT INDONESIA	69	MICROENGINE TECHNOLOGY	7
BOSCH	3	MILIPOL ASIA PACIFIC / GSA 2017	27
DELTA SCIENTIFIC	9	MORSE WATCHMANS	35
EVOLIS ASIA	5	MYANMAR SECURITY EXPO 2016	81
GIGA-TMS	15	SAFETY & SECURITY ASIA 2016	67
IFSEC INDIA 2016	39	SECURITY CHINA 2016	65
IFSEC SEA 2016	IBC	TRADE CONNECTION	101
INTERSEC 2017	1	ZHEJIANG DAHUA	IFC
ISC EAST 2016	OBC		



IFSEC Southeast Asia

SECURITY • FIRE • SAFETY



Ensure security excellence for your company at the leading Southeast Asian exhibition for technology, solutions and knowledge

The leading security, fire & safety event for Southeast Asia

- ▶ Free education sessions provided for you to learn from the industry's best and brightest
- ▶ Find the right security solution provider for your business amongst the 350 exhibitors
- ▶ Get hands on experience with the latest gadgets in security technology
- ▶ Speak directly to the technical specialist from your preferred supplier

 @IFSECSEA #IFSECSEA2016

7 - 9 September 2016
KLCC Convention Centre
Kuala Lumpur Malaysia

SECURE YOUR PLACE AND REGISTER NOW AT IFSECSEA.COM

Supported by



Organised by





SIA WITH ISC SUPPORTING
THE SECURITY INDUSTRY



SAVE THE DATE ISC EAST 2016

**NOVEMBER 16-17, 2016
JAVITS CENTER, NEW YORK**

Trade Show Executive's
FASTEST 50

Honored as one of the 50 Fastest-Growing Shows of 2015

**ISC East Named to
Trade Show Executive's Fastest 50 List,
Honored for Extraordinary Growth
in Two Categories.**

ENDORSED BY:

CASIA
Computer Assisted Security Incident Analysis

NYSIA
New York State Information Security Association

PSN
Security Network



CORPORATE SPONSOR:



The Northeast's Largest Physical Security Trade Show

- **SOURCE** the latest products from over 200 industry leading brands, technical reps, manufacturers, and distributors.
- **LEARN** the most current trends, technologies, codes, and standards through FREE accredited education through SIA Education@ISC.
- **CONNECT** with your peers and colleagues through exclusive networking.

ISCEAST.COM