

Apr - Jun 2017

bathroom + kitchen today

KITCHEN SPACES

Getting Kinaesthetic In The Kitchen

SURFACE SPACES

Clash Of The Colours



COVER STORY

COMPACT & CONCISE



Scan to visit
our website



2017 New Collections

The Beauty of Art; The Quality of Caesarstone®
New Statuario Maximus
www.caesarstone.sg

 **caesarstone**®



hansgrohe

Three years of fussing. And suddenly she likes showering.

Sometimes the art of engineering is more convincing than the art of persuasion. Especially when it turns the everyday into an experience. **hansgrohe. Meet the beauty of water.**

hansgrohe.com.sg

Hansgrohe Pte Ltd

69 Mohamed Sultan Road, Singapore 239015 • Tel: 6884 5060 • Fax: 6884 5071 • Email: info@hansgrohe.com.sg

Authorised Dealers:

Aqualife Bathroom and Kitchenware Pte Ltd:

144 Upper Bukit Timah Road, #04-13, Beauty World Centre, Tel: 6469 9818

Bathroom Solutions by Econflo Systems Pte Ltd:

401 Commonwealth Drive, #01-01, Lobby B, Haw Par Technocentre, Tel: 6396 3738

Bretz & Co Pte Ltd: 1 Nassim Road, #01-02, 1 Nassim, Tel: 6336 9926

Carera Bathroom Pte Ltd: 26 Tai Seng Street, #01-02, Tel: 6533 0455

Homeplus 2000 Building Products: 312 Changi Road, Tel: 6846 8749

Homewerkz Pte Ltd: 28 Sin Ming Lane, #03-144/145, Midview City, Tel: 6659 5955

Home & Bathroom Bldg Products Pte Ltd: 566 Balestier Road, Tel: 6253 4655

J-Asia (Singapore) Ptd Ltd: 33 Ubi Avenue 3, #01-30, The Vertex, Tel: 6339 2338

VolumeFive Pte Ltd: 51 Anson Road, #01-53, Anson Centre, Tel: 6348 2508

Viva Nueva Pte Ltd: 496/498 Sims Avenue, Tel: 6744 6938

Press releases, proposals for stories, and product development literature should be submitted by email to the editor at:

bathroom@tradelinkmedia.com.sg
kitchen@tradelinkmedia.com.sg



On the cover: **K7 by Wharfside**
Photo Credits: www.wharfside.co.uk

Disclaimer

All advertisers and contributors must ensure all promotional materials and editorial information submitted for all our publications, must be **free from any infringement on patent rights and copyrights laws in every jurisdiction**. Failure of which, they must be fully liable and accountable for all legal consequences (if any) that may rise.

The editor reserves all rights to exclude or refuse submissions at any time without prior written or verbal notice if contributing parties do not provide complete text and supporting images at a minimum of 300 dpi in .tif format.

The editor reserves all rights to omit and amend press releases submitted for publication. Both publisher and editor are unable to accept any liability for errors or omissions that may occur in this process, although every effort has been taken to ensure that all information is correct at the time of going to press. Edited press releases, articles or stories are returned to contributors for check on facts at the sole discretion of the editor. No portion of this publication may be reproduced in whole or part without written permission of the publisher.

PUBLISHER
Steven Ooi
steven.ooi@tradelinkmedia.com.sg

EDITOR
Nicole Lee
bathroom@tradelinkmedia.com.sg

GROUP MARKETING MANAGER
Eric Ooi
eric.ooi@tradelinkmedia.com.sg

MARKETING MANAGER
Felix Ooi
felix.ooi@tradelinkmedia.com.sg

HEAD OF GRAPHIC DEPT/ADVERTISEMENT COORDINATOR
Fawzeeah Yamin

GRAPHIC DESIGNER
Siti Nur Aishah

CIRCULATIONS
Yvonne Ooi

bathroom + kitchen today is published **four** times a year by:
Trade Link Media Pte Ltd
(RCB Regis. No. 199204277k),
101 Lorong 23, Geylang
#06-04 Prosper House,
Singapore 388399

T: 65-6842-2580, F: 65-6842-2581/65-6745-9517
E: bathroom@tradelinkmedia.com.sg
E: kitchen@tradelinkmedia.com.sg
W: www.tradelinkmedia.com.sg

INTERNATIONAL SALES OFFICES

[FRANCE]

A.P. Watt International Publisher's Representative
6, Rue Des Acacias,
91810 Vert-Le-Grand, France
T: 33-1-6456-0015; F: 33-1-6456-0863

[ITALY/SWITZERLAND]

Arch. Aldo Cacchioli Publistein di Galli Cacchioli & Co.
Via Ciseri 5, 6600 Locarno, Switzerland
T: 41-91-751-6910; F: 41-91-751-7109

[JAPAN]

T. Asoshina/Shizuka Kondo ECHO Japan Corporation Grande Maison,
Rm 303, 2-2, Kudan-Kita,
1-Chome, Chiyoda-ku, Tokyo 102, Japan
T: 81-3-3263-5065; F: 81-3-3234-2064

[KOREA]

MCI
Room B615, Hanwha Obelisk 2,
481, World Cup buk-ro,
Mapo-gu, Seoul,
Korea 03902
T: +82 2 730 1234 F: +82 2 732 8899

This publication is available at no charge to subscribers from industries related to the bathroom who meet the publication's terms of control. For subscribers who do not qualify for free subscription, copies will be made available, subject to acceptance by the publisher, for a subscription fee which varies according to the country of residence in the following manner:

Annual Subscriptions

Europe / America - S\$130,
Japan, Australia, New Zealand, Middle East - \$130
Asia Pacific - S\$80,
Malaysia / Brunei - S\$65,
Surface mail: Singapore - S\$32 (Incl 7% GST Reg No.: M2-0108708-2)

Please fax your enquiries to
+65 6842 2581 or +65 6745 9517 or call +65 68422580

Printed in Singapore by:
KHL Printing Co Pte Ltd MCI (P) No: 049/02/2017
ISSN 2345-7120 (Print) and ISSN 2345-7139 (E-periodical)

The following titles are also published by us:
Southeast Asia Building • Southeast Asia Construction • Security Solutions Today • Lighting Today • Lighting Audio Visual Asia



KNIGHT OF THE BLACK NERO

A new era of rain shower

Rubine s.r.l, Via Ponchielli 26, 10024 Moncalieri, Torino / Italy

Marketed By. Casa (S) Pte Ltd, 15 Kian Teck Crescent, Singapore 628884. Tel: 6268 0066

www.rubine.it - rubine@casa.com.sg - [Facebook.com/rubineitaly](https://www.facebook.com/rubineitaly)

RubineTM
Indulge in the Aqua Lifestyle

Contents

EDITOR'S NOTE	006
GLOBAL NEWS <i>Events</i> <i>Corporate</i>	008
PRODUCT SPECIAL <i>Elevated Essentials</i>	028
PROJECT FOCUS <i>Syncing Shapes with Sinks</i> <i>Luxury meets Speed and Resilience</i> <i>Hangzhou Dragon Hotel</i> <i>Tauern Spa</i> <i>Fruitt Family Lodge</i>	036
SURFACES <i>Clash of the Colours</i> <i>Collections</i>	055
BATHROOM SPACES <i>Compact & Concise</i> <i>Bathroom Special - Roca</i> <i>Collections</i> <i>For The Bathroom</i>	065
KITCHEN SPACES <i>Getting Kinaesthetic in the Kitchen</i> <i>Collections</i> <i>For The Kitchen</i>	085
SHOW PREVIEW <i>Ecobuild 2017</i>	102
SHOW REVIEW <i>Big 5 Construct Indonesia 2016</i>	104
CALENDAR OF EVENTS	108



COVER STORY

066 Compact & Concise

What It Should Have Been

We wrongly printed a company's name in the surfaces feature for Bathroom + Kitchen Today Vol. 1. The correct name of the company should be Pixers, not Pixar. The editor apologises for the error.

ELKAY[®]

Trusted American Brand since 1920

A century of craftsmanship. A lifetime of quality.



Our signature cast brass vessel lavatory sink will give any bathroom a modern look with a classic appeal. This durable top-mount sink creates a compelling presence without overpowering the senses. This sink is available in both copper and cast brass. Our finish options include basket weave, bronze aged or antique hammered. Like all of our sinks, these vessel sinks are crafted with the upmost precision to provide an unforgettable appearance with unmatched functionality.

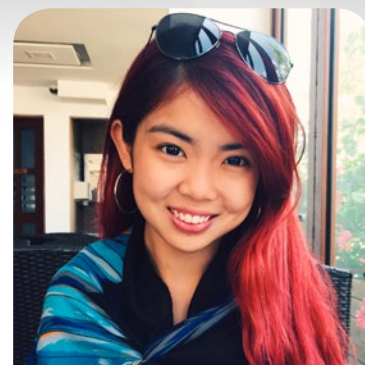
Dear Readers

As the dust settles in this brand new year, we continue to pick up the pace and strive towards new heights. 2017 is an exciting year for Bathroom + Kitchen today – we are one of the judges for the Golden Bath Awards at the prestigious Guangzhou International Sanitary Ware Fair 2017! Do like us on our Facebook page for updates closer to the event.

Our cover story features kitchens with aesthetics sharper than a butter knife. From new functions to complete reinterpretations, kitchens are one of the top reinvented rooms in any home. Forget boring handles and bland colours; nowadays, kitchens stun with their take on what used to be everyday elements. Marble-glazed islands, rustic lightbulbs and ultra-stylish touch cupboards? Check out how these come together for the perfect Instagram-able kitchen.

For our bathroom spaces feature, we explore compact and concise bathrooms. Bathrooms can be tricky to layout especially when space is limited. The key is to eliminate furniture you don't need – for instance, if your household do not take baths much, why not substitute the extra space for a vanity table or an extended storage cabinet? Walk-in showers are always the go-to for compact bathrooms. Every design element in a compact and concise bathroom should have a purpose and be functional in multiple ways. Hop on over to see the selection of selected bathrooms!

Have something bathroom or kitchen-related you think we would love? Send it in! We welcome submissions and would be happy to feature pieces from loyal readers as long as it fits snugly into our theme. To end off, we wish you a fantastic stride into the mid-year and that everything good continues to light your way.



Nicole Lee
Nicole Lee
Editor

AN INNOVATIVE APPROACH FOR A SMART HOME

Conti+ Sensor Faucets



Water Efficiency: ✓✓✓ Excellent
Water Consumption: 1.80 litres/min
Type of Product: Basin Taps and Mixers
Brand: Conti+
Model: GH10
Registration No.: BST-2015/016960



See ultra video on internet:



Water-saving

Low flow rates of 6 or even only 2 liters per minute thanks to a choice of aerators. Water flow delay time can be reduced, resulting in even lower water consumption.



Energy-efficient

Extended lifetime with conventional alkaline cells up to 4 years and full utilisation of the battery capacity through innovative power management. Reduced energy consumption for water heating as water consumption is reduced up to 70 %.



Turbine/Solar

Extension of the battery life to up to 8 years with the optional turbine module: A mini-power station generates electricity from the flowing water. The ideal solution for highly frequented areas.



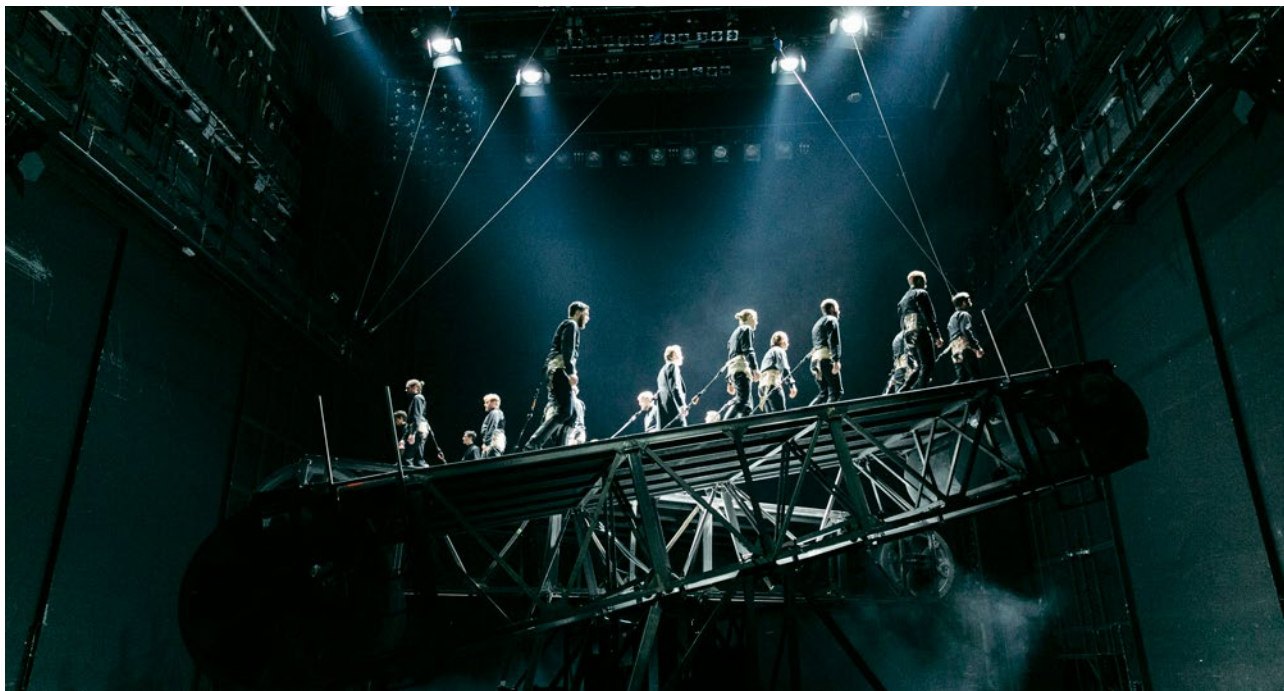
Hygienic Operation

- Hands-free and safe operation
- Reliable water activation by the IR sensor above the tip of the spout
- Pre-selectable temperature (removable temperature adjustment lever)

ECONFLO SYSTEMS PTE LTD

401 Commonwealth Drive, #01-01, Lobby B
Haw Par Technocentre, Singapore 149598
Tel: +65 6396 3738 Fax: +65 6396 3736
Email: sales@econflo.com Website: www.econflo.com

TWO PROJECTS HAVE BEEN CHOSEN FOR THIS YEAR'S OPUS – GERMAN STAGE AWARD. AN OPUS IN THE STAGE AND LIGHTING DESIGN CATEGORY HONOURS THE 'GET LOUD OPEN AIR TOUR 2016' BY REA GARVEY



Additionally, an award is to be given in the Technical Realisation category for Ulrich Rasche's production of Schiller's 'The Robbers' at the 'Residenztheater' in Munich. Opus is one of the foremost awards in the field of theatre and stage production and will be presented during Prolight + Sound, International Fair of Technologies and Services for Entertainment, Integrated Systems and Creation, in Frankfurt from 4 to 7 April 2017.

Rea Garvey – Get Loud Open Air Tour 2016

Lighting and stage designer Christian 'Rocketchris' Glatthor created a unique stage setting for Rea Gavey's Get Loud Open Air Tour, which is oriented less towards current trends in modern rock and pop tours and more towards the work of a classic theatre set designer.

On the basis of the artwork for Garvey's current album, 'Prisma', Glatthor designed a dynamic, three-dimensional stage setting with an abstract tree trunk rising above the drummer's platform in the middle. Thanks to the well-thought-out positioning and the choice of illuminants, the branches and the huge tree trunk can be erased from the stage by modifying the lighting and made to reappear as if by magic later. Thus, the stage is extremely dynamic and can adapt continuously to the changing content, dramaturgy and mood of the songs.

The concept, which makes clever use of hundreds of specially made rubber bands, is underscored by numerous unconventional ideas ranging from microphone stands illuminated by controllable LEDs, via specially made, organic-looking platforms

for the musicians, to an efficiently downsized 'dimmer city' that cuts truck space, weight, costs and even CO2 emissions.

The extraordinary stage design delighted fans and scene insiders at 25 venues with around 200,000 visitors during the last festival season. Given its great success, the 'Get Loud Open Air Tour' will be continued in 2017.

'The Robbers' at the 'Residenztheater' in Munich

The production of Schiller's drama by director and stage designer Ulrich Rasche places the protagonists in the wheelwork of a gigantic man-machine-music theatre, "to surprise the soul during its most secret operations", as Schiller wrote in his introduction to 'The Robbers'. The focal point of the set is an imposing conveyor-belt construction, the idea for which was realised by the technical departments of the 'Residenztheater' in just under a year. As an unceasingly marching mass of humanity, Schiller's figures become part of this overwhelming apparatus. Underscored by the music of composer Ari Benjamin Meyers, the result is a disturbing mood of foreboding that sets Rasche's production apart from other interpretations of the play.


'The Robbers' premièred in the 'Residenztheater' on 23 September 2016. The leading roles are played by Valery Tschepanowa and Franz Pätzold as unequal brothers, Franz and Karl Moor. Gerrit Jurda was responsible for the lighting. Director Ulrich Rasche made a name for himself in the German theatre world with, inter alia, productions at the 'Staatstheater Stuttgart', the 'Volksbühne Berlin', the 'Theater Bonn' and the 'Schauspiel Frankfurt' theatres.



A REVOLUTIONARY CERAMIC MATERIAL.

◆ SaphirKeramik, a high-tech material driving innovative design. With its precise, thin-walled forms and tight-edge radii, Laufen brings a new language to bathrooms. Collection INO, design by Toan Nguyen.

LAUFEN

Bathroom Culture since 1892  www.laufen.com

Roca Bathroom Products Singapore Pte. Ltd. (199503842Z)

8 Burn Road, #12-07, Trivex, Singapore 369977

Tel: +65 6333 4080, Fax: +65 6636 7476, www.sg.roca.com, enquiries.sg@sg.roca.com

Roca Malaysia Sdn. Bhd. (5554-M)

Level 3A, Quattro West (West Wing), No. 4, Lorong Persiaran Barat, 46200 Petaling Jaya, Selangor Darul Ehsan, Malaysia

Tel: +603 7952 2522, Fax: +603 7952 2696, www.my.roca.com, enquires@my.roca.net

Opus – German Stage Award

The Opus – German Stage Award – has been given for outstanding achievements in the fields of theatre and stage productions, live events and open-air events since 2002. A jury of experts from the industry, associations and trade publications, as well as representatives of Messe Frankfurt, honours new, exceptional approaches to the creative use of technology. Following the introduction of a new set of rules, the entire collective achievement behind the winning projects can now also be recognised – previously, Opus could only be awarded to individuals. The honorary award is sponsored by the Professional Lighting & Sound Association of Germany (Verband für Licht-, Ton- und Veranstaltungstechnik - VPLT), the European Association of Event Centres (Europäischer Verband der Veranstaltungs-Centren - EVVC) and Messe Frankfurt GmbH.



in Frankfurt am Main since its inception. The presentation ceremony for the Opus – German Stage Award – will be held together with the presentations of the Sinus – Systems Integrations Award, the Musikmesse International Press Award (MIPA) and the Prolight + Sound Press Award (PIPA) in 'Saal Europa', Hall 4.0, at 18.00 hrs on 6 April 2017. These presentation ceremonies are part of a gala evening at the fair, an important meeting place for the sector.

Opus – German Stage Award – has been presented during Prolight + Sound

For more information, visit www.prolight-sound.com.

GERMANY'S ARCHITECTS WON OVER BY HANSGROHE : ONE OF ARCHITECTS' AND PLANNERS' MOST FAVORED BRANDS: GOLD FOR HANSGROHE AT THE ARCHITECTS' DARLING AWARDS 2016



Representatives of the German construction industry, as well as scientists and architects, gathered on 10 November for an annual exchange of interests and information. The highlight of the industry event was the evening gala and the Architects' Darling Awards ceremony. As a result of the most extensive survey of architects conducted in Germany, the gold trophy in the "Sanitation Fittings and Accessories" category was awarded to Hansgrohe, the Schiltach-based bathroom and sanitation specialist.

Hansgrohe: Repeat Award Winner

"We are extremely pleased to take back to Schiltach for the fourth time this 'Oscar' of the German construction industry," said Frank Ecker, Head of Project Business at Hansgrohe Deutschland Vertriebs GmbH. "The award is not only proof that we are one of the most sought-after brands among architects and planners – the Architects' Darling also gives our team the incentive to continue delivering outstanding products and exceptional service to all of our partners." Hansgrohe previously won the Architects' Darling in the "Sanitary Fittings" and "Bathroom" categories in 2011, 2013 and 2015.

Nationwide Industry Poll

In 2016, a total of 1,600 architects and planners in Germany were surveyed regarding more than 200 manufacturers and brands in the construction industry. Readers of the Heinze architectural journal and other industry publications were invited to vote. Influential decision makers in the construction industry were also able to express their opinions on the specialist websites www.heinze.de and www.baunetz.de. A total of 32 manufacturers were selected for the 23 product categories and nine interdisciplinary Jury Awards.

For more information, visit www.hansgrohe.com.



Luxury against which all others are measured

The art of perfection

*Restroom spaces can now be filled with unlimited possibilities
of persuasive luxury and superb functionality.*

JohnsonSuisse showcases its uber designs and quality craftsmanship in this urban oasis.

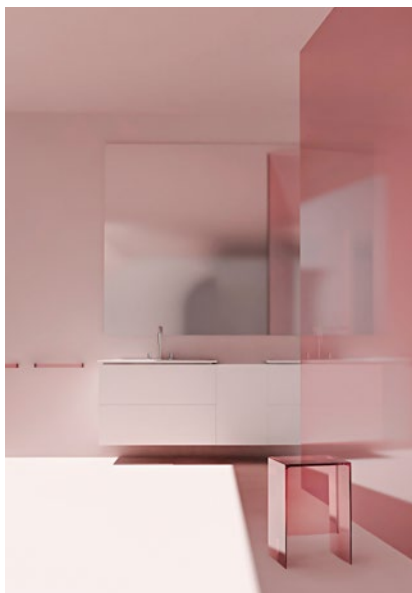


JohnsonSuisse
Bathroom Solutions

Roca Bathroom Products Singapore Pte Ltd (1995038422)
SHOWROOM: 8 Burn Road #12-07 Trivex, Singapore 369977. Tel: +66-6333 4080 Fax: +66-6636 7476

• www.johnsonsuisse.com.sg •

KARTELL BY LAUFEN TAKES PART AT ISH WITH A COLLECTION ENHANCED BY NEW PRODUCTS AND FURNITURE COMPLEMENTS, TO NARRATE AN EXCLUSIVE, ORIGINAL INTERPRETATION OF THE BATH ENVIRONMENT



At ISH, from 14 to 18 March 2017 in Frankfurt, Kartell by Laufen presents new ceramic pieces, furniture complements and special finishes that evolve the products into iconic and stimulating objects, capable of triggering emotions and embellishing the bath, which becomes a true retreat in the domestic setting.

Kartell by Laufen, designed by Ludovica and Roberto Palomba and launched in 2013, is a project based on the fusion of the best characteristics of two companies: Kartell for its originality and design of plastic objects, and Laufen Bathrooms for its quality and rigor in the field of ceramics. From the outset the collection has focused on maximum flexibility and versatility, meeting the requirements of many different tastes.

Today the range of offerings has expanded with new proposals and moods, with the introduction of a completely new series of slim washbasins and a range extension of the countertop washbasins together with new colours for the finishing of the furniture in order to address an even wider audience.

One constant of the Kartell by Laufen project is the very high quality of the plastics and ceramics, and in particular of SaphirKeramik, the innovative ceramic material developed by Laufen, which has revolutionized the world of the bath due to its capacity to combine lightness, strength and slimness, thanks to an innovative formula enriched with corundum.

Kartell by Laufen continues to grow in the market, consolidating its position on an international level in the retail and contract sectors: on one side with the constant growth of the number of points of sale around the world, at this point at a total of 1000, on the other side enhancing some important architectural projects.

In the light of these experiences, Kartell by Laufen now looks to the future with a growth strategy, but above all with a plan of development to position the brand in a new dimension, with a stronger focus on interior design.

For more information, visit www.kartellbylaufen.com.





DIAMOND series



INSTANTAQUA INTRODUCES THE MOST REVOLUTIONARY SHOWER TECHNOLOGY IN 30 YEARS

Mixer shower technology in existing electronic shower systems has not been improved in the past 30 years. The few improvements that have been made are limited to installing technology units behind shower walls and above ceilings or concealing them in bathtub casings. These adjustments require the relocation of water pipes behind walls and therefore retiling as well.

“All Revealing And Unconcealed”

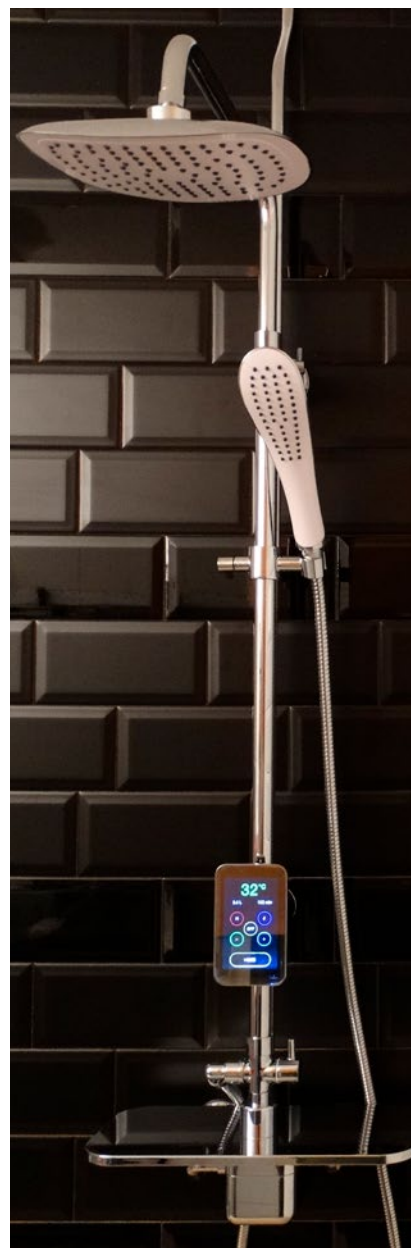
This is about to change, now that Dutch development company InstantAqua will be introducing the most revolutionary shower technology in 30 years, at the ISH 2017 in Frankfurt, Germany. This technology, named SmartShower Art, is based on the principles of ‘stand alone’ and ‘plug and play’, and on a new concept in bathroom aesthetics, in which the electronic shower systems is regarded as a work of art on the bathroom wall. Or, as InstantAqua’s managing director Jurgen Verwoert describes it: “All revealing and unconcealed.”

Easily Fitted

InstantAqua, which was founded in 2008, has been working on the development of an electronically controlled shower system for 5 years. The system features an entirely new digital mixer shower technology and a touch display that can be operated in the shower and still function perfectly. SmartShower Art’s technology is so small that the shower system can be fitted easily without damaging walls or ceilings – stand alone. “You simply replace the existing mixer shower with the SmartShower Art system, install the SmartShower Art app on your smartphone and enjoy your shower – plug and play. That’s all there is to it,” Verwoert explains.

Operate With The Tap Of A Finger

Operation of the SmartShower Art’s display is very much the same as that of a smartphone – with the tap of a finger – and yet, there is one small difference. The display does not require a central button to be activated, and will operate once your hand is within a radius of 30 centimetres. The display looks somewhat like a chrome mirror, on which the data collected by the



SmartShower Art is projected from behind. This, together with the new mixer shower technology, gives the SmartShower Art its modern and sleek looks.

Connected To The Internet

The SmartShower Art is connected to the Internet via WiFi, which enables it to exchange information with a desktop computer, tablet or smartphone, on for example: water use in litres or gallons, outlet temperature, shower duration. This makes it ideal for personalizing your shower experience at home, or for use in the hospitality and healthcare sectors. Would you like more information? Visit the website: www.instantaqua.eu or visit the SmartShower Art stand at the ISH 2017 in Frankfurt, Germany from 14th to 18th March for a hands-on demonstration.

For more information, visit www.instantaqua.eu.



Easy Clicker Waste: Making Life Easy

Set to revolutionise the bathroom, Bosheng's new range of clicker waste systems is an innovative combination of the clicker and plug.

Equipped with a waste body and clicker plug, the system's clicker plug can be easily pulled out with ease, making it simple to use and maintain.

Simple and functional, this clicker waster system is a practical addition to any bathroom, upgrading your bathroom experience effortlessly.



Ningbo Bosheng Plumbing Co., Ltd (BS&BK)

Jiangshan, Yinzhou, Ningbo, China 315191

Tel: 0574-8764 1687 Fax: 0574-8764 1686 Email: info@boshengplumbing.com

www.boshengplumbing.com

KON BRINGS PERSONALISATION TO THE BATHROOM SPACE IN STYLE; CUSTOMISATION IS NOW AVAILABLE WITH CAST STONE



Stone has traditionally been used to enhance character and style to prestigious properties, but today, architects are using cast stone instead to achieve the same, if not better, visual impact. Cast stone also sits lighter on the wallet, and has a much reduced project risk. Spotting this trend, KON started focusing on their research and development to apply the cast stone technology on their customizable sanitary products, such as the bathtubs and basins.

KON Cast Stone bathroom collection weaves contemporary functionality into everyday lives with their newest design. The new generation of the Cast Stone series of sanitary ware is environmentally friendly and, through innovative product technology breakthroughs, is available for personalization. As the cast stone is a new type of mineral filling, its high molecular composite material allows the product to be shaped into both elegant curves and straight-edged finishes. After a professional ratio and high temperature curing, it is able to keep the surface at ceramic finishes but while retaining a natural marble texture.

With its seamless processing and splicing, dreamy color textures and a constraint-free element, it allows creativity in customization and production. Users can work their creative requirements and watch KON spin their designs into life, the end product being create purpose-made products to your precise specification. Lest to say, KON's skilled craftsmen can fulfil your design requirements for bespoke items and turn them into reality.

For more information, visit www.kon.com.cn.



CASTSTONE TUB

THE BEAUTIFUL BATHROOM MOVEMENT.

The beautiful bathroom is symphony, not solo.
Graceful music from the heart and connect with the heart always



Caststone tub. by KON international

www.kon.com.cn

Asia-pacific: Frank.lee@kon.com.cn | China: Jane.jia@kon.com.cn | Worldwide: Freeman.fang@kon.com.cn

HÄFELE SINGAPORE REVAMPS SHOWROOM INTO A HUB SHOWCASING THE LATEST HOME SOLUTIONS, PRESENTS LATEST COLLECTIONS ENCAPSULATING ITS “IDEAS FOR LIVING” PHILOSOPHY

Häfele Singapore, a leading manufacturer of high quality fittings, smart hardware technologies and locking systems, has revamped its showroom to showcase its range of products and solutions for the home, turning it into a hub for designers, trade partners and homeowners.

The showroom was revamped late last year to showcase modern kitchen and wardrobe concepts, which have been identified as the top focus and trend for interior designers and homemakers. Products and solutions are presented in various settings aimed to inspire, as encapsulated by Häfele’s “Ideas for Living” philosophy to incorporate functionality, comfort and satisfaction in the ideal home.

Mr. Marcus Hoeller, General Manager of Häfele Singapore said, “With urbanisation and as living spaces get smaller, the kitchen has become a focal point and a central living space in the house. Another trend that we have seen is the move towards digitisation in the home, where one can control lighting and temperature or turn on an appliance, with just a touch of your phone through an app. Our revamped showroom has been carefully organised to cater to and showcase these evolving consumer tastes and trends.”

A wide range of Häfele’s products such as flap fittings, runner system, hinges, sliding doors, electronic locks, LED lighting systems, wardrobe systems, storage solutions, and kitchen appliances are showcased in the 4000-square feet showroom. The showroom centres around three key zones of Inspiration – demonstrating the best use of space and Häfele’s concept of “More Life Per Square Metre”; Innovation - integrating the latest technology and innovations with design; and Communication - where Häfele’s trained staff work with clients to make their dream home or work space a reality. In particular, the space showcases Häfele’s kitchen and wardrobe concepts such as:



Standard Kitchen: A galley kitchen with space-saving features aimed at firsttime home owners.

Compact Kitchen: A straight-line cabinet kitchen with essential functions, which can be hidden from sight with the slide of a door.

Superior Kitchen: A two-walled kitchen with a cosy bar/corner, for homeowners who like to cook and entertain.

Smart Kitchen: A modern kitchen showcasing Häfele’s intelligent systems and solutions.

The Soul Kitchen: A fully functional kitchen with useful real-life applications of Häfele’s solutions and products.

The Wardrobe: Walk-in wardrobe featuring latest products and solutions for easy viewing and storage of apparels.

Häfele has also updated its range of storage solutions, adding a touch of elegance with glass drawers as well as the Anthracite range of dark-hued materials, which is in line with consumers’ refreshed interest and demand for sombre tones in homes.

“With an emphasis on providing innovative living solutions, Häfele has also rolled out new products that can be used across different settings, be it the kitchen or wardrobe. We want our showroom to be an inspiring and stimulating space for everyone to work in,” Mr. Hoeller added.

For more information, visit www.hafele.com.sg.



The wide range of ROYAL REFLEX provides the right solution for every bathroom. This made-in-Germany washbasin and furniture collection stands out due to its modern linear shape. Glass surfaces, in the latest colors, in keeping with the trend of the times, and matching KEUCO mirrors, fittings and accessories giving the bathroom that special touch, radiating peace and comfort.

Available in: China, Hong Kong, India, Malaysia, New Zealand, Philippines, Singapore, Taiwan, Thailand

A LOOK BEHIND THE SCENES OF THE AXOR MANUFAKTUR IN THE BLACK FOREST: UNIQUE OBJECTS FOR THE HIGHEST DESIGN STANDARDS



exquisite surfaces. For example, the even finish on the brushed surfaces is produced meticulously by hand. The members of the team are particularly proud of the recently completed bathrooms for a Chinese luxury hotel compound, where they adorned the taps with Swarovski crystals.

However, the AXOR Manufaktur also successfully realizes smaller projects for private customers, such as producing exclusive surface finishes for master bathrooms of private villas and mansions. "One of our specialties is the lengthening of a tap," explains Lothar Schoch. "To begin with, someone with a trained eye needs to determine whether it is actually possible to increase the length of a tap, because the design and the underlying geometry may impose certain limitations. Provided it is technically feasible, the actual work steps in the process of increasing the length of a mixer require many hours of labor and the right tools for the precise fusion of two main bodies," adds Schoch.

At the AXOR Manufaktur, artisanry is complemented with state-of-the-art technology. In-house PVD chambers are used to apply coatings of custom metal finishes to the taps. PVD technology, which stands for "Physical Vapor Deposition Technology", involves the use of noble gases under laboratory conditions; they are "ignited" to produce a vapor which then coats the objects with a custom finish. The resulting surfaces are highly resistant against scratches, cleaning agents and harsh environments.

Handmade and high-tech: In an exclusive service area called the AXOR Manufaktur, employees have been individualizing taps, shower heads and accessories for private customers and global project since 2002. The possibilities range from special finishes to engravings and length adaptations.

Small Team, Top Performance

The eight-member team around Lothar Schoch, Head of the AXOR Manufaktur, is capable of meeting the most diverse range of customer requests – from engravings to custom finishes and adapting the dimensions of individual fittings.

"Our mission is to assist our customers in transforming their bathroom vision into reality," says the Head of the AXOR Manufaktur. Whether an order is intended for a global project or private customer, precision and a passion for detail are of the essence in the manufacturing of exclusive sanitary fittings. All eight employees have been specially trained to meet the strict qualitative standards of the AXOR Manufaktur. After all, each piece is beveled and polished by hand in cooperation with the specialty departments before being checked for flawless quality.

This requires a high skill level and experience in the handling of metal objects and their

Where individual customer requests include a custom finish such as goldoptic or black-chrome, changes to the underlying design have to be taken into account. "Cruise ships generally feature mirrored bathroom layouts, which means the holes for the connecting rod must be drilled on the left or the right-hand side of the tap," explains Lothar Schoch. "A fabulous resort in the Pacific recently asked for taps from the AXOR Starck collection with extended spouts and with different handles.



The Allure of Resilience.

100% Engineered Quartz

www.seasonstone.com.sg

 **seasonstone**

In addition, we applied a nickel-colored PVD coating to the surfaces – not just for aesthetic, but also for practical reasons: the salt in the sea air on the island would attack galvanized chrome surfaces over time,” Schoch adds. And at the trendy gourmet restaurant “The Jane” in Antwerp, AXOR kitchen mixers and AXOR Uno² electronic mixers in brushed black-chrome meet the specifications of renowned interior architect Piet Boon; the elegant, somber surfaces are a perfect match for the purist ambience of the converted chapel. The Spanish designer Patricia Urquiola, on the other hand, chose AXOR Urquiola in brushed gold-optic for the bathroom taps of the re-designed Spa at the famed Four Seasons in Milan.



The Gold-optic finish accounts for the bulk of the special surface finish requests. Bi-color finishes, where a touch of gold augments the tap’s chrome finish, are also very popular. The AXOR Manufaktur currently offers a standard range of fifteen different finishes; additional

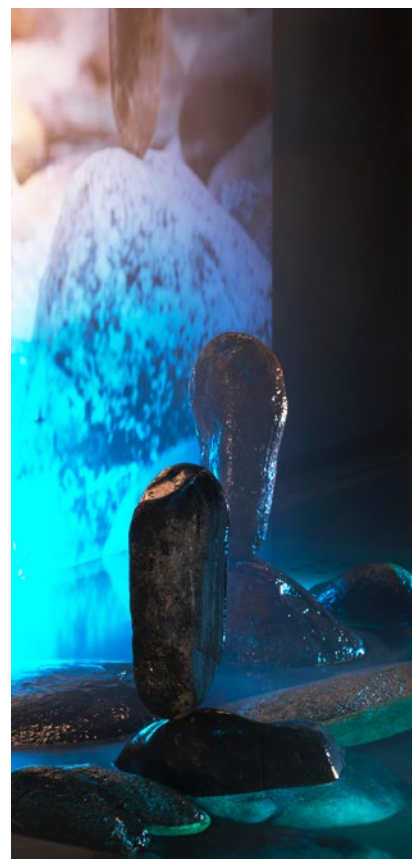
colors possible and are coordinated directly with customers. The application of special lettering, logos or coats of arms to taps, shower heads and accessories by means of laser technology, is also a part of everyday operations for the small team in Schiltach, Germany. Modifications of this kind enhance every bathroom, giving it a personal note with a high qualitative standard.

For more information, visit www.AXOR-design.com.

GESSE LAUNCHES EQUILIBRIO STONE AND WOOD TAPS

Multi award-winning bathroom products manufacturer, Gessi, has a Private Wellness department dedicated to one’s mental, spiritual and emotional well-being. The company always works closely with unique individuals, drawing inspiration from them for its corporate philosophy of creating a holistic wellness within oneself, one’s home and one’s environment. Some of the people Gessi works with include:

- Prof. Dipak Pant, an anthropologist from Nepal who specialises in sustainable economics and a sustainable way of life
- Prof. Donatella Caprioglio, a psychologist from the University of Paris specialising in children psychology and the psychological meanings of homes and home furnishings as well as the ability of transforming one’s environment to be welcoming and warm or cold and depressing or causing distress
- And most recently, Marsel Lesko, an artist-philosopher who shares his approach to life and the regaining of an inner and outer state of wellbeing through abandonment of self through spirituality and meditation.



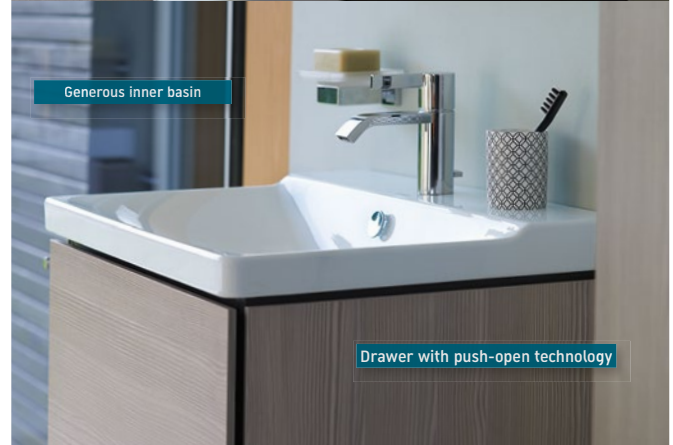


The list goes on, including sportsmen, teachers of positive and lateral thinking, etc. These individuals work together to bring elements of positivity, energy and wellness into the homes and lives of the people who use them.

Marsel is a fascinating character who works very closely with Gessi and together with Luigi who understands exactly how the market works and what people want, Gessi has created the Equilibrio. It is a new line of taps that weaves nature seamlessly into one's home by using natural materials such as marble, natural river stones, teak, rosewood, and more.

In a 2001, a study of the Robert Taylor Homes, Frances Kuo, a professor of natural resources and environmental science and psychology at the University of Illinois and her colleague, U. of I. landscape architecture professor William Sullivan, found that those who lived in housing units with no immediate view of or access to nature reported a greater number of aggressive – including violent – conflicts with partners or children than their peers who lived near trees and grass. According to the study, humans living in landscapes that lack trees or other natural features undergo patterns of social, psychological and physical breakdown that are strikingly similar to those observed in other animals that have been deprived of their natural habitat. Since living next to nature in space-starved Singapore has its challenges, bringing nature into the house could be the next best thing.

For more information, visit www.gessi.com.



P3 COMFORTS. COMFORT FOR ALL SENSES.

The P3 Comforts series from Duravit and Phoenix design provides the ultimate comfort – in its look, its feel and its function. The thin edges and delicate shapes of both, washbasin and bathtub, are as characteristic as they are comfortable. The generous width of the toilet provides 20 mm of additional seating comfort. A perfect match is the bathroom furniture range L-Cube. More on www.duravit.com

DURAVIT

ELKAY INTRODUCES A LINE OF SIGNATURE CUVERRO ANTIMICROBIAL COPPER LAVATORY SINKS



The sinks are designed to take advantage of the unique bacteria-killing characteristics of uncoated copper, which are considerably enhanced in the copper alloys utilized by CuVerro. Lab tests show that with regular cleaning, CuVerro copper touch surfaces eliminate 99.9% of bacteria within 2 hours. Safe and hygienic, these sinks are perfect for hospitals and healthcare installations.

It was a natural move for Elkay, a 90-year-old company that has been a leading supplier of stainless steel sinks to the healthcare field for decades. The sinks are seamlessly designed using 18 gauge CuVerro antimicrobial copper, with exposed surfaces hand-blended to a lustrous satin finish and fully-undercoated to dampen sound and prevent condensation. Moreover, they are made from 80 percent recycled content and are 100 percent recyclable. And perhaps most refreshingly, they are as easy on the eye as they are tough on germs.

Like all of their sinks, these models are crafted with the upmost precision to provide an unforgettable appearance with unmatched functionality.

For more information, visit www.elkay.com.

COSENTINO INTRODUCES CINDY CRAWFORD AS THE NEW FACE OF SILESTONE® AROUND THE WORLD

Silestone®, the world's leading brand in quartz surfaces, is honoured to announce that Cindy Crawford, one of the most famous supermodels, and an icon in international fashion, will be the image of the Spanish firm for the next two years (2017-2018).

Two leaders in their respective sectors, Silestone® and Cindy Crawford, have joined forces to represent the very best in beauty, fashion and design in an advertising campaign entitled "Tops On Top", which will be released from March onwards in the world's major lifestyle, trend, fashion, design, decoration and architecture magazines. The American supermodel will become a global ambassador for the brand, taking part in the different promotional events run by the company in North America.

This partnership will take the global positioning of the Silestone® brand one step further, building on its already established position as a leading edge decorative surface for design and architecture. It also reinforces the brand's connection with the lifestyle world, and follows the line started with previous collaborations such as those with Andrés



Velencoso, Goya Toledo or Paz Vega, among others, which have helped the brand to become synonymous with architecture and design.

The campaign "Tops On Top" will feature Cindy Crawford alongside one of the key new products to be launched by Silestone® in 2017, the "Eternal" colour collection, paying homage to natural stone and evoking the infinite, timeless and eternal beauty that can only be found in nature.

Silestone® Eternal is another manifestation of Cosentino's constant innovation in order to offer surfaces of premium aesthetic and mechanical qualities, with extraordinary shine and easier to clean and maintain than ever before. With a focus on expanding its sales growth in the Southeast Asian market, Cosentino had recently invested SGD\$22 million in a brand new facility in Singapore, scheduled to open in April 2017.

For more information, visit www.silestone.com.sg.

CAESARSTONE INTRODUCES ITS NEW 2017 COLOURS

Reflecting the most upcoming colour trends paired with timeless compositions, Caesarstone launches three new Supernatural designs.

Leading manufacturer of high-quality quartz surfaces Caesarstone has introduced three new Supernatural designs. Three of them belong to the steadily successful Supernatural collection, a range inspired by the colours and patterns found in nature.

The new 2017 additions to the Supernatural Series are the Statuario Maximus 5031, White Attica 5143 and Tuscan Dawn 5104. These three designs achieve the exquisite appearance of natural stone and include a variety of intricate veins amidst striking yet classic colours.

Supernatural Ultra Series

The *Statuario Maximus* is an ultra-premium design characterized by an entwining of broad and bold, as well as subtle and delicate veining. It comes in two shades of grey and is set on a soft white background.

Supernatural Series

White Attica is a trendy combination of vivid black and white with hints of mild greys. This powerful natural look design will upgrade any interior with its presence.

Tuscan Dawn responds to today's trend for taupe colours, presenting a nature-inspired design that includes light and creamy natural thick veins.

"Ranging from time-enduring colours like white to daring, boldly veined designs, the new 2017 colours are created with the view to the upcoming trends and our vision of consistently meeting and anticipating different interior design schemes and palates. They represent our steadily evolving journey as leaders in premium surfaces", says Eli Feiglin, VP of marketing at Caesarstone.

About Caesarstone

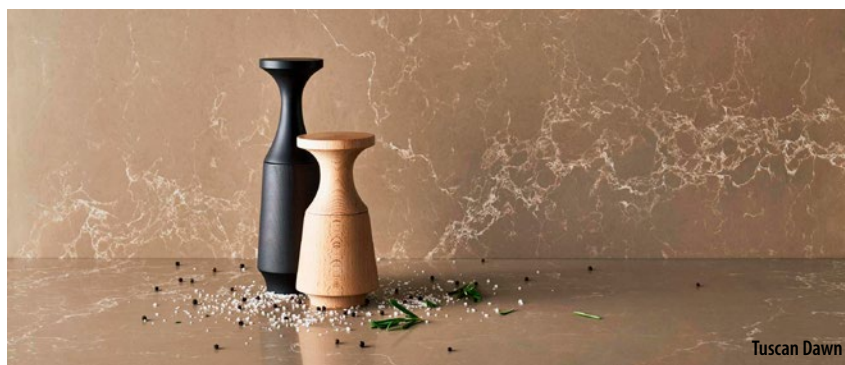
Caesarstone manufactures high quality engineered quartz surfaces, which are used in both residential and commercial buildings as countertops, vanities,



Statuario Maximus



White Attica



Tuscan Dawn

wall cladding, floors and other interior surfaces. The wide variety of colors, styles, designs and textures of Caesarstone® products, along with Caesarstone's inherent characteristics such as hardness, non-porous, scratch and stain resistance and durability, provide consumers with excellent surfaces for their internal spaces which are highly competitive to granite, manufactured solid surfaces and laminate, as well as to other engineered quartz surfaces. Caesarstone's three collections of products – Classico, Supernatural and Concetto – are available in over 50 countries around the world.

For more information, visit www.caesarstone.sg.

BRAVAT SHINES AT IF DESIGN AWARD NIGHT, TOOK FIVE TROPHIES HOME



The iF DESIGN AWARD 2016 winners were celebrated during a glamorous awards ceremony at the BMW Welt in Munich. The Managing Director of Roman Dietsche GmbH, Mr. Claus Eberling, was invited to this event and received the honor from the top design industry.

The iF Product Design Award was set up in 1953 and is annually conferred by the iF International Forum Design. Every year the iF attracts entries around the world, which are judged by renowned experts, with the best of them receiving an iF seal of outstanding design quality. The best of the best are awarded with an iF gold award, known as the "Design Oscar". It is not occasional for Bravat to win this high recognized seal. Design is the core strength of Bravat. The modern and professional creation ensures every single Bravat product to be aesthetical, ergonomic and fits fluid mechanics.

Now let's review Bravat winner products:



1) LIM Faucet:

With the design concept - "Less is more", LIM Faucet has been devoted with minimal design and maximum water enjoyment. The spout is ingeniously integrated with hand shower. User can switch between two functions by effortlessly rotating the spout. Less elements save more space for your bathroom and increase efficiency in production, also environment friendly with less material consumption. To optimized water consumption, flow rate will be changed in different modes according to different needs.



2) M+ Draw-off Tap

M+ draw-off tap's design is inspired by the organic structure from natural plant. One source of water, the "root", provides two outlets for different uses. You will no longer need a valve for your washing machine and another valve for the basin next to it, only one M+ draw-off tap is sufficient. The water is switching between two outlets by the handle. Connecting with hoses and spray heads, M+ tap can be used in garden, laundry, kitchen or other conditions. And "multi" application is the exact design intent. It requests less building construction, saves space for your laundry, and creates more flexibility with a natural harmonious appearance.

3) Equatre 4 in 1 TaP

Equatre, one minimalist styling electronic tap delivers hot, cold, boiling, filtered, 4 water types from 1 spout with world leading technology. The control of 4 waterways is separated in 2 handles. Crystal clear handle on the left switch filtered/boiling water. With single touch, it shows blue light to indicate filtered drinking water. When you touch and hold for 3 seconds, it turns red to indicate boiling water. For safety, boiling water will stop immediately if there is not contact. Cold-start 2 stages handle on the right side controls hot/cold water. For energy saving, stage 1 offers cold water only. Hot water will be turned on in stage 2.



4) Vogue Basin Mixer

Vogue emphasizes a reminiscent of nature, elegant and minimalist fashion styling, and application of user-friendly materials. The tree branch shape and round curves advocate the appearance of natural elements. It's made from patented brass alloy which contains extremely low level of lead and fulfills the drinking water material regulations in Germany and the U.S. Water flow angle is adjustable via aerator, flexible to fit in different basins. Water consumption is reduced via mixing air technology on the aerator, reaching world-class eco requirement. Its soft finish technology provides comfortable touch.



5) Fit Angle Valve

It is one-key operate angle valve. The function of regulating water flow is barely used, thus its one-key button can avoid needless operations. The hose connector can sway back and forth 10° to ensure enough room for the installation of hose. Black coupled with white and simple geometric modeling coupled with stainless steel which abandons needless design and seeks the best match.

For more information, visit www.bravat.com.sg.

ELEVATED

ESSENTIALS

AXOR LAMPSHOWER BY AXOR

Would you like your bathroom to be a homely place where you can relax, a place where rigid spatial boundaries are magically dissolved, but the spatial separation between living and bathroom area still somehow retained? One way of achieving this is to create a visual link via a window, harmoniously integrating the bathroom cube into the living area. Natural materials, warm colours and homely accessories are extremely inviting. A well-thought-out lighting concept enhances the cosy atmosphere and accentuates individual areas. The AXOR LampShower designed by Nendo connects seemingly conflicting elements and picks up this concept quite beautifully.

For more information, visit www.hansgrohe.com.sg/AXOR.



iSHOWER BLUETOOTH SHOWER SPEAKER BY YELLOW OCTOPUS

A Bluetooth-enabled, water resistant speaker that is compatible with Bluetooth-enabled smartphones and tablets including the iPhone, iPad, iPod touch and Android devices. Listen to and control your music and audio from up to 200 feet away. Plus, you can share it with up to five users! The iShower works with your favourite apps such as Pandora, Spotify, iHeartRadio, iTunes and podcasts.

For more information, visit www.yellowoctopus.com.au.

MINI-POWER STATION IN SENSOR-OPERATED WATER-SAVING FAUCET BY ECONFLO

The minimalist designed Conti+ SOLino sensor tap is equipped with leading valve technology. The touch-free function is convenient and hygienic, saving water up to 70% compared to conventional lavatory faucets. A mini-power station with photovoltaic cells converts light into electrical energy and ensures reliable operation of the faucet. The specially developed solar energy module converts both daylight and artificial light into usable operating power. The intelligent electronics system reduces its electrical consumption to an absolute minimum when darkness falls, hence extending its battery life increases to up to eight years.

Installation is made easy with clear settings on the faucet, as advanced functions like "pause" or "continuous on" can be easily made using the patented iqua-click key. In addition to energy efficiency and water savings, the durability of the faucet also helps protect valuable resources. The continuously self-calibrating sensors, a specially developed technology for a low-surge pressure magnetic valve, and the sturdy electronics guarantee functionality.

Hundreds of thousands of the touch-free faucets made by this Swiss manufacturer are already in use worldwide. 1500 Conti+ SOLino sensor faucets were delivered to the new World Trade Center Complex in New York in 2010. A target in the rebuilding of the center is for all of its buildings to receive a gold rating from the U.S. Green Building Council. As high resource efficiency is a requirement for this rating, the water-saving Conti+ SOLino faucets with solar power operation will be used in the lavatories of the highest building of the complex, One World Trade Center and Tower 4.

For more information, visit www.econflo.com.



LENOX WALL MIRROR BY BOCA DO LOBO

The Lenox wall mirror, handcrafted by the most experienced craftsmen of Boca do Lobo Studio, is a stylish original piece that adds class and elegance to luxury houses. The hexagonal frame of this round mirror is made from either oak or mahogany wood. The wood can be lacquered in four-color finishes (white, black, silver or gold). Contemporary, exquisite and unique, the Lenox mirror is the high end piece missing in your home.

For more information, visit www.bocadolobo.com.

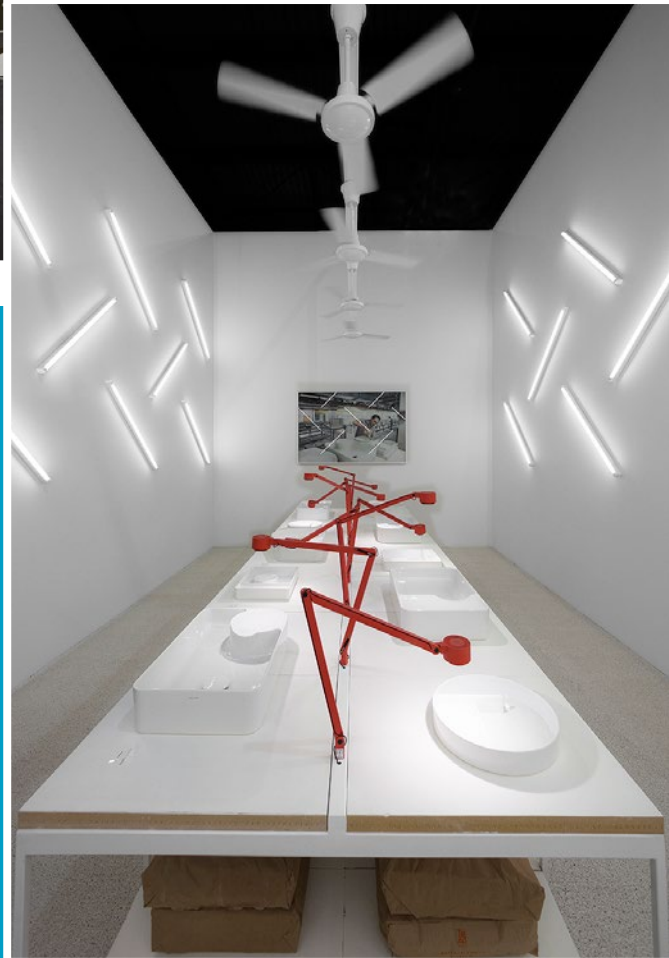


MARbled GLASS SOAP DISPENSER BY MIA FLEUR

Marbled glass soap dispenser & toothbrush cup to add a real luxury vibe to your bathroom. This set is made to look like green marble, which gives it a really expensive, plush feel, but without the price tag, as they are actually made from glass.

For more information, visit www.miafleur.com.





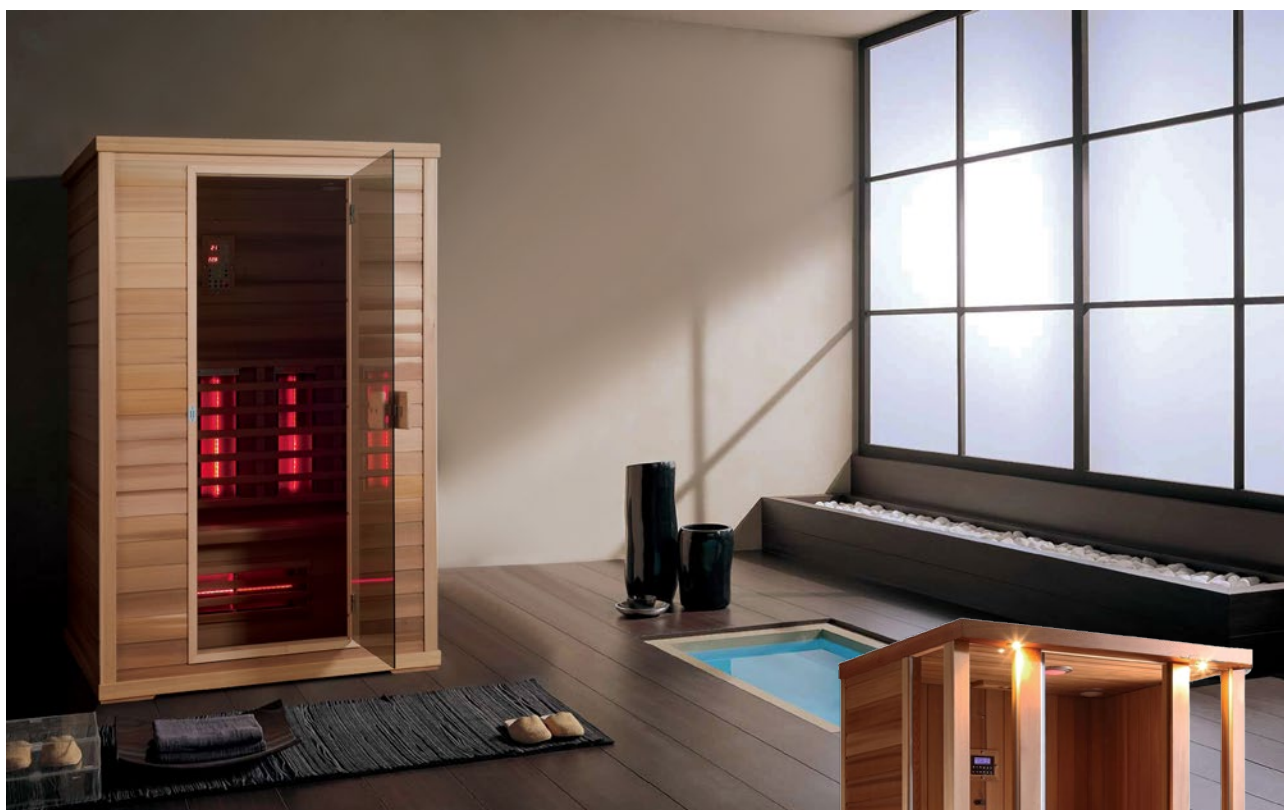
**ENTER
SAPHIRKERAMIK,
A NEW MATERIAL
INNOVATION FILED
FOR PATENT FROM
SWISS MANUFACTURER
LAUFEN THAT IS SET
TO CHANGE THE
BATHROOM LANDSCAPE**

The visionary work with ceramics requires knowledge of substance, an experimental approach to it and the ability to translate the ideas into industrial processes. LAUFEN processes the delicate material with highest attention and passion, pay a little more attention to the detail and achieve best Swiss quality.

SaphirKeramik - a unique, revolutionary ceramic material, which possesses all the hygienic advantages of traditional bathroom ceramics, but is thinner, more defined, and extremely robust. The special properties are due to the addition of corundum, a colourless component of sapphire, which has been prepared for the market through years of research and development work by Laufen.

The creation of SaphirKeramik has enabled leading designers, including Konstantin Grcic and Toan Nguyen, to unleash their imagination and design washbasins with thin borders, round or squared, in a variety of shapes and sizes, which are extremely hardwearing. Numbers of the recent collections such as INO, VAL and Kartell by Laufen have taken the SaphirKeramik innovation to an industrial scale, with projects in some of the most prestigious hotels in the world.

For more information, visit www.laufen.com.



INFRARED SAUNAS BY MODERN DEPOT

If you are looking to boost your health on a daily basis, an in-home sauna is a great investment as it provides a wide range of health benefits all at once. According to an article at Forbes.com, saunas help your body to naturally expel impurities through sweat. It also relaxes you and improves blood circulation. Many people have also reported better skin health and increased energy after sweating it out in a sauna cabin everyday. This said, it's important to get a quality sauna. Modern Depot advises users to take note of the heating element as well as the wood used for the cabin as these two things determine the quality of your sauna unit.



"Infrared technology is the best for saunas as it offers many powerful benefits," Modern Depot says. "Our saunas from the Barca and Spartacus ranges have been incorporated with heating element powered by HIKURANGI infrared which is a patented technology. This technology has been proven to provide the full spectrum of infrared which makes our products different from the others."

Advantages of HIKURANGI infrared technology:

- Time-saving: No time is wasted when preheating the sauna
- The infrared wavelength range features all combinations of infrared
- A life cycle of 5000 working hours – will last approximately 30 years
- Operating temperatures – between 85°F and 140°F
- Low energy consumption

For more information, visit www.moderndepotspas.com.





HAND HYGIENE SOLUTIONS BY INITIAL

Colours can have a positive psychological influence on mood and behavior, reflect brand personality, provoke emotions and stimulate the senses. When colour is introduced into the washroom, dependent on the colour of choice, businesses have the ability to influence a client or employee's mood and behavior, and for some, washrooms adhere to branding and corporate colour identity.

First impressions are formed on an average of 90 seconds, and 60 to 90 percent of decisions can be influenced by colours. As such, Initial's Signature Colour is available in seven elegant, vibrant and sleek matt finished colours:

- Black – Embodies sophistication and substance
- Champagne – Ultimate expression of opulence and refinement
- Blue – Fosters trust while stimulating clear thought and efficiency
- Green – Reassures abundance of refreshment and harmony
- Pink – Expression of nurture, care and consideration
- Red – Provokes lively reactions, with the potential to drive enthusiasm
- Turquoise – Sparks inspiration and fresh motivation

Coated with an anti-microbial polymer that inhibits the growth of the bacteria and reduces germ particles adhering to the surface, Signature Colour optimises hygiene standards as well as ensures health and safety of the end users with air, cubicle and hand hygiene solutions.

For more information, visit www.initial.com.sg.



TO CREATE A POSITIVE DIFFERENCE IN EVERY ENVIRONMENT WE BUILD, SEASONSTONE SINGAPORE BRINGS TO YOU SURFACES BUILT FOR THE FUTURE

Seasonstone takes pride in building a sustainable future with our engineered quartz surfaces. Accredited as a Singapore Green Building Product, Seasonstone recycles over 95% of the water utilized across our manufacturing process. This is done through a filtration system that makes use of natural gravity to filter the chalky water from manufacturing through 6 giant reservoirs each reservoir filtering the different sized particles.

Apart from recycling water, Seasonstone uniquely reduces manufacturing wastage to less than 2% by customizing their slab plates for their projects. This practice creates an environment where there is less waste produced, increasing the efficiency of the materials and lowering their carbon footprint.

Seasonstone is simultaneously inspired by the world's leading design consultants and interior architects while being built from a foundation of grit and fortitude – Seasonstone's engineered quartz surfaces are world-class, long-lasting surfaces created through leading vibro-compaction compression technology. This technology removes air pockets in the material making it extremely dense and hard, perfect for use in a diverse range of interior finishing such as floor/wall tiles and countertops.

Seasonstone is built consciously with our customers in mind. Their materials are sent for heavy metal leaching tests in Singapore to ensure that these quartz are free from harmful heavy metals and toxins, making it safe for even toddlers to play on. The tests are all handled by Singapore's more stringent testing agencies for their peace of mind.

Seasonstone Quartz is also industry certified in Singapore to ensure that their surfaces are resilient, hardy and scratch resistant. Achieving a MOHs scratch hardness of 8 and an average 0.01% water absorption rate on their test reports. As such, maintenance of Seasonstone Quartz is simple. Its non-porosity does not allow for harmful mold and mildew to grow on its surface and at the same time, does not allow for stains to seep into its surfaces; spilt coffee and wine will be the least of your worries.

Channeling both elegance and strength from nature, Seasonstone never sits still, constantly developing alongside the latest trends to keep up with the growing demands of today's architecture landscape.

For more information, visit www.seasonstone.com.sg.

BLUESMART ONE SUITCASE AWARDED “BEST OF THE BEST” PRODUCT DESIGN BY RED DOT, BUT WHAT MAKES IT SPECIAL?

Bluesmart, creators of the world’s first smart luggage, announced that they will be adding the “Best of the Best” Red Dot award for product design to its long list of accolades. Bluesmart’s re-imagining of luggage created the smart suitcase market where they are the leaders in the burgeoning market for both technology and design. The Bluesmart One is the company’s first product and enhances the travel experience with features built into the suitcase body, controlled by users via their smartphone.

The Bluesmart One, named “The iPhone of Luggage” by The BBC, is the first suitcase designed to eliminate the hassles of modern travel by enhancing traditional components with technology. It features global 3G + GPS location tracking to see the bag’s location anytime, anywhere, and recover it if lost. The built-in 10000mAh battery charges most devices up to six times, so you stay connected—without ever crowding around an airport outlet. The digital lock secures the bag remotely and if you’re ever separated from your Bluesmart, it automatically locks and sends a notification. The digital scale also tells the mobile app your bag’s weight so you can dodge checking your bag and overweight fees. The combination hard/soft case is durable, yet light - perfect for jetting.

A polycarbonate shell protects contents while the magnetic nylon face allows easy access to a lined laptop compartment. The trolley handle and hub-less wheels allow for smooth 360 degree mobility on the go.

“We are all passionate explorers who discovered that connectivity and convenience were constant pain-points for travelers. Once we realized these problems could be solved by reimagining luggage, your travel companion on every journey, the goal of the product became clear: to connect the physical and digital worlds in the most seamless way possible,” said Verlini.

For more information, visit www.bluesmart.com.



LUXURY MEETS SPEED AND RESILIENCE

Text & photos by Seasonstone Singapore



Autobahn Motors is located in Jalan Kilang, near one of the oldest estates in sunny Singapore. As their name suggests, Autobahn Motors is home to some of the world's fastest and most luxurious cars. These cars are uniquely parked indoors by a fully automated lift system.

Overcoming space constraints is a key to success in tiny island country Singapore. This prompted the specialists in luxury sports automobiles with the ingenious idea to stack their cars upwards, to be featured prominently on the side of their ABM Building. The resulting scenery is a building brimming with vigor, speed and opulence.

The inside of the building feels like an exquisite automotive art gallery, with powerful lighting illuminating the brilliance of their powerful cars. To support their fleet of cars indoors, Autobahn Motors needed to land their luxury cars on a solid hard surface that could withstand daily heavy impact, high traffic flow and yet exude the luxury compatible with their super cars. This is where Autobahn Motors meets Seasonstone Singapore; where luxury melds with resilience.







The sleek black quartz flooring by Seasonstone Singapore emanates subtle elegance, with millions of little constellations peppering the floor like a clear moonless night sky. To achieve the desired effect, Autobahn Motors worked closely with Seasonstone Singapore to customize the size of the glitter of their quartz flooring to best suit their overall design.

“Only these authentic, certified engineered quartz surface are able to handle the movements from a 750 horsepower V-12 engine like the Lamborghini Venono”

Engineered quartz surfaces are easy to maintain - spilt oil, grease or even battery alkaline does not cause the surface to be stained or tarnished. These properties ensure the workspace’s cleanliness and comfort and pulls away from the mundane look of typical concrete or tile floorings.

Despite its industrial location, the high ceiling and luxury flooring allows the showroom area to be easily converted into a lifestyle party venue, where esteemed guests and clients can gather for live events or boutique exhibitions. Autobahn Motors have truly transformed the customer experience when it comes to automobiles selection.



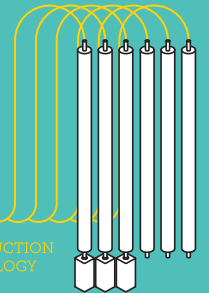
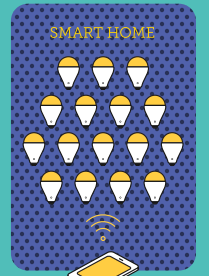
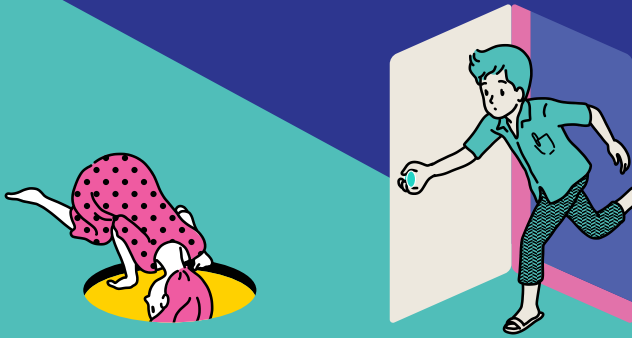
About Seasonstone Singapore

Seasonstone Singapore has become the top go-to for interior designers, architects, and design enthusiasts across the globe. Their quartz surface collections has been used for a variety of platforms including slabs, tiles, countertops, vanity tops, table tops, cut to size projects, with the results of their creativity beautifully on display. Their quartz products showcases the extreme durability in variable applications, where the non-porous surface production craftwork guarantees them a stable and trusted quality of products. Whether you’re looking for inspiration or a chance to take your interior décor to a whole new level, Seasonstone can help make it happen.

architect '17

2-7
MAY 2017
10AM-8PM
IMPACT

**BAAN
BAAN**
RECONSIDERING
DWELLING

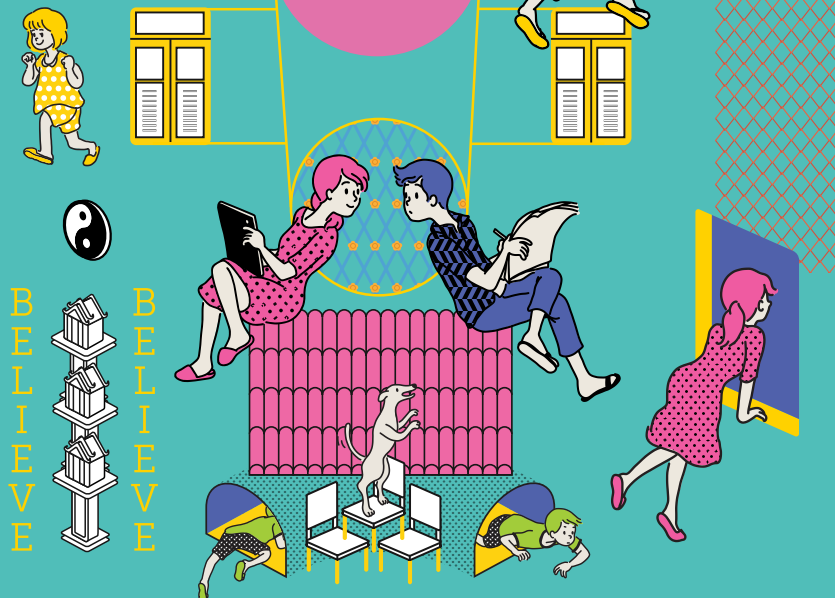
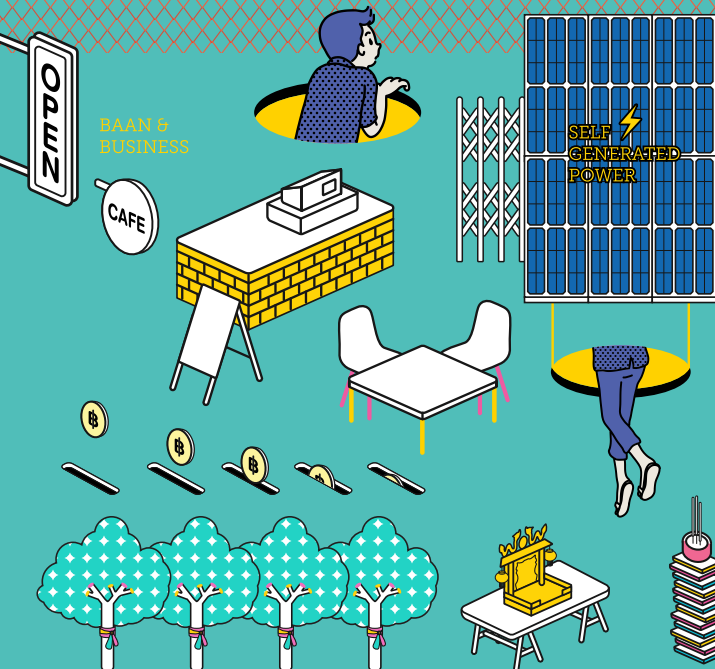


The 31th ASEAN's Largest Building Technology Exposition

Encounter the latest advancements and innovations from 850 exhibitions worldwide.

Witness in remarkable forum from Topmost International architects.

Don't miss special promotion exclusively in this show.



BELIEVE
BELIEVE

HANGZHOU DRAGON HOTEL

Text & photos by Roca

Project Details

Architects:

Cheng Taining, China

Interior Design:

LRF Designers Limited

Hangzhou Dragon Hotel is the first landscape garden hotel in Zhejiang Province to be completely managed by a foreign company. Standing where the beautiful West Lake meets the business and cultural centre in Hangzhou, it is surrounded by a green bamboo forest but is also just a few steps away from the bustling town centre. This is a place where you would rather stay than go home.

The landscape, courtyard, western lakeside and garden-style designs are fully integrated with the poetic scenery of southern China, allowing people to find a rare tranquility away from the hustle and bustle of city life. Stop and look at the

The lobby floor is paved with imported natural rock and the unique yellow pattern looks like yellow dragon in the sky as swift as a swan. The transparent glass ceiling not only achieves natural lighting, but is also more energy efficient and environmentally friendly.



A bright yellow artistic chandelier hanging in the centre of a watery setting and combining with the glittering water to add a little grandeur. A hand-blown glass ball of light: each shape is different. The chandelier's components are all imported from abroad—specially made materials full of character and luxury.



green trees and red stone when the lanterns are lit, creating a heavenly platform of water. The raised glass walls on the first floor beside the platform take the water views into the room. Even if people are inside you can still feel its natural charm.

The bathroom space is equipped with the one-piece Chicago design and red Khroma intelligent electronic toilet. The cast-iron bathtub is robust and long-lasting. Made of classic quality iron, the design has a long history and a good reputation.

For more information, visit www.sg.roca.com.



The red KHROMA intelligent electronic toilet is smooth and charming, sophisticated and inspiring. The innovation of integrated body-cleaning functions and user-friendly nozzle design can fully awaken all your sense.

The bathtub is part of the bathroom and is also integrated with the bedroom. A "One-key" atomized liquid crystal glass partition : just press the switch to get a "private space". If you tap the control panel, a "fog" effect is instantly caused in the transparent glass, providing you with a private bathroom space. The vapour barrier does not destroy the sense of intimacy with the bedroom, and the transparent effect provides a visual extension of the space.



International ICW
Construction Week 2017

10 - 14 APRIL 2017

Five-day Construction Conferences

ecobuild
southeast asia 2017

12 - 14 APRIL 2017

Three-day Exhibition

**KUALA LUMPUR
CONVENTION
CENTRE**

TOWARDS
ENHANCING
**QUALITY &
SAFETY** IN
CONSTRUCTION

EXHIBITION
CONFERENCES
CAREER FAIR
COMPETITIONS
SEMINARS
WORKSHOPS



FOR MORE
INFORMATION
CONTACT US:

+603 2176 8788

ecobuild-sea@ubm.com

www.ecobuildsea.com

www.icw.my

HOSTED BY:



ORGANISED BY:



CO-LOCATED EVENTS:



TAUERN SPA, ZELL AM SEE IN KAPRUN, AUSTRIA

Text & photos by Laufen

Project Details

Architects:

Skyline Architects

Interior Designers:

Zeytinoglu Architects

Location:

Zell am See-Kaprun, Austria

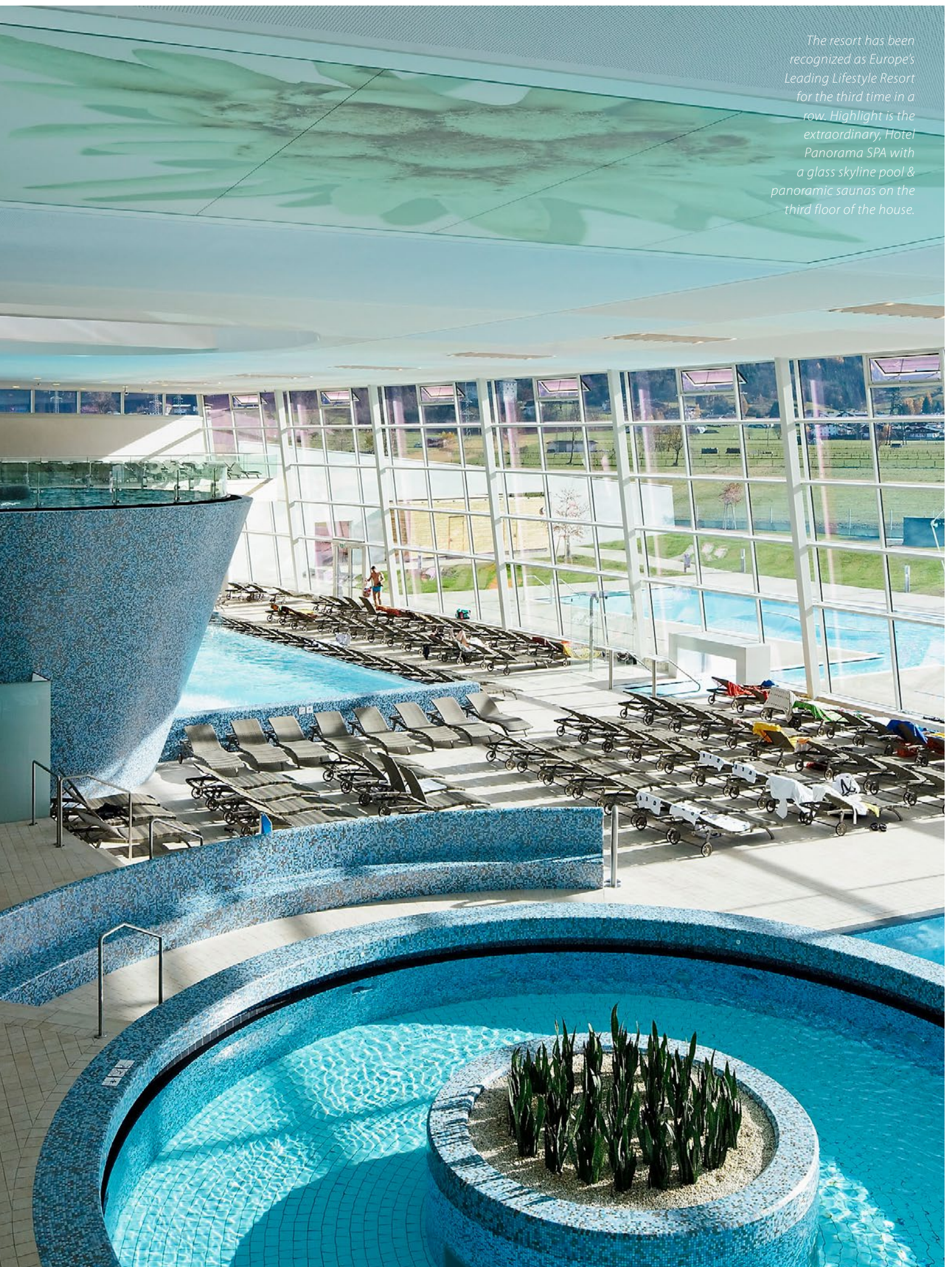
The Tauern Spa in Zell am See – Kaprun promises an exciting encounter with nature, architecture and wellness. Operated by Vamed Vitality World, it comprises a water and sauna world measuring 20,000 square meters. The retreat offers 17 spa treatment rooms, as well as a four-star superior resort.

The different buildings of the complex are grouped around a central structure. The spectacular architecture creates water landscapes, quiet zones and sauna areas that open up to, and take advantage of, the natural surroundings. Boundaries between interior and exterior spaces seem to disappear as glass facades give way to extraordinary vistas of glaciers, mountains and lake views.

LAUFEN's Living City series is aimed at people who live in modern surroundings and create a living environment with refined awareness and sensitivity to materials. The extremely flat washbasin, with its flat surfaces and defined edges, appears to float in front of the wall. This is how elegant sanitary ware can be.



The resort has been recognized as Europe's Leading Lifestyle Resort for the third time in a row. Highlight is the extraordinary, Hotel Panorama SPA with a glass skyline pool & panoramic saunas on the third floor of the house.





The spa has 11 active and relaxing pools offering a grotto, light muscle relaxation, massage jets for neck and back, and brine baths, among other things. Guests can relax in 10 saunas and steam baths, or get pampered with a massage or treatment in the spa. The glass skyline pool is a highlight of the spa, offering exceptional panoramic views of the Alps.

All facilities are designed in a barrier-free way. Washrooms and bathrooms are equipped with LAUFEN's Living City washbasins and Caprino plus urinals.

For more information, visit www.laufen.com.



ONLY PANORAMIC MOUNTAIN VIEWS ARE MORE BEAUTIFUL

Text & photos by **Hansgrohe Singapore**

Project Details

Architectural Design:

Philip Loskant Architekt Eth | Sia, Zürich, Switzerland

Project Management:

Architekturwerk AG, Sarnen, Switzerland

Interior Design:

Matthias Buser, Zürich, Switzerland

There are many good reasons to take a trip to the Alps: to get away from everyday life, breathe the clean mountain air and enjoy the view of the majestic rocky crests and the clear alpine lake. Now, in Melchsee-Frutt there is a new reason: the Frutt Family Lodge & Melchsee Apartments. The hotel complex opened in December 2015 with quality taps and showers by AXOR and hansgrohe in the Spa and in the bathrooms.

In the Heart of the Swiss Alps

The newly built resort hotel is in the village of Melchsee-Frutt, a ski resort located at 1,920 metres above sea level in the canton Obwalden. 'The Frutt', situated on a high and sunny plateau, has been a Spa since 1865, and to this day, the idyllic spot remains free of cars. The pioneer Alois Reinhard opened the area's first hotel in 1889. For nearly one hundred years, the Hotel Reinhard pampered holidaymakers, including distinguished and wealthy guests from all over Europe, in an elegant atmosphere. The Reinhard family also opened Switzerland's longest cable car at Melchsee and installed a power generator – at the time Europe's highest altitude power turbine.





New Buildings on Historical Grounds

In 1985, the era came to an end and the buildings fell into disrepair until the Frutt Resort AG decided to revive the tradition and build the 4-star Frutt Family Lodge & Melchsee Apartments on the original hotel property. The new hotel has 47 rooms, suites and family suites, as well as 43 holiday flats. It is an imposing ensemble: four grey stone buildings with textured roughcast façades stand out like monoliths on the shores of the Melchsee lake. The modern, alpine style of the pitched-roof buildings hints at traditional chalet architecture. The cubes that make up the upper parts of the construction can withstand the extreme alpine weather conditions and seem to float on the glass plate façades that form the base of the building. This design gives the massive new construction a lightness that recalls the reflection of the mountains on the surface of the Melchsee lake.





Soothing Views

Philip Loskant, the architect, and Architekturwerk, the company responsible for the realisation of the project, used large panorama windows to showcase the retreat's stunning natural surroundings. Guests can enjoy spectacular views of the mountains and lake from their rooms and suites, as well as from the Spa, which comprises a swimming pool, sauna, steam bath and relaxation room. Whether soaking in the pool or relaxing in a lounge chair: contemplating this panorama soothes the mind and body. Entertainment is available in the lower lobby level, featuring a cinema, gym and bowling alley. Parents can enjoy all of this, even without their children: the hotel lives up to its name by offering special family packages that include professional childcare services.

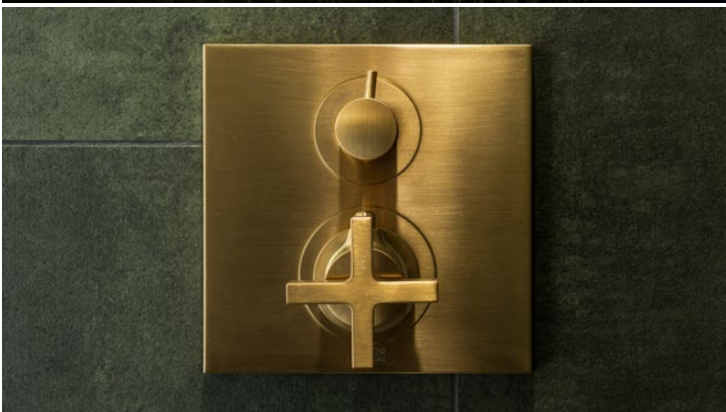
Modern Aesthetics in a Warm Colour Palette

Philip Loskant, the architect, and interior designer Matthias Buser opted for a classic lodge style for the family rooms and suites. Natural materials, warm colours, abundant oak elements and modern furnishings give the interior design an understated elegance with a cosy chalet-like feel. A sustainable energy design was conceived for the entire complex, and 90 percent of the electricity used is generated from renewable sources. hansgrohe bathroom taps are the perfect fit, both visually and technically: The washbasins in the rooms and suites are equipped with single-lever taps from the hansgrohe Metris line that use up to 60 percent less water than comparable products thanks to the Ecostat Comfort technology.



Golden Days at the Spa

Situated in the basement, the Spa is the high point of the building's expressionist design style. A succession of chambers simulates the experience of bathing in a cave system. The way the rooms are connected and the overhead lighting are reminiscent of an oriental hammam. The AXOR Starck V tap lightens up the Spa: through its transparent and open glass spout the natural power and vitality of a water vortex is omnipresent. The tap, designed by Philippe Starck, is made of crystal glass spout and chrome body with a special brushed gold optic finish by the AXOR Manufaktur. The same warm gold finish was used on the concealed shower valves from the AXOR Citterio collection with their characteristic cross handles. Accessories of the AXOR Citterio and AXOR Uno collections give the bathrooms a finishing touch. Another gold highlight in the spa: the AXOR LampShower designed by Nendo. The combination of overhead shower and ceiling lamp not only delivers a warm, extra wide rain spray, but it also bathes the user in a pleasant, warm light. There's no better way to cap off a day of skiing, hiking or pampering!



For more information, visit www.hansgrohe.com.sg/axor.

SYNCING SHAPES WITH SINKS

Text by **Hillary Pang**
Photos by **Ashton & Bentley**

One of the principles in design is balance and harmony. This concept is important in places that we reside in, with the bathroom being no exception. Often deemed as one of the sanctuaries at home, it is thus important for the bathroom to exude a consonant atmosphere.

The layout and fixtures of the bathroom are some of the key elements in establishing a harmonious space. This leads us to question how we should go about designing our bathroom. Specifically, one of the things we may ponder on is: What sink shape should we use?

Firstly, oval sinks are classic pieces and the most commonly fixed shape in traditional homes. With many bathtubs being similarly shaped, installing an oval sink together with one would be visibly harmonious. Moreover, those who like counter space will find that counters with oval sinks have more of that. Its naturally steep slope also provides good drainage.

In comparison, square sink silhouettes modernise the bathroom. Many contemporary bathrooms feature

rectangular sinks with oval bathtubs, going against the traditional design principle. Functionality-wise, some square sinks have shallow slopes, affecting the water's drainage flow.

Lastly, asymmetrical sinks are uncommon, but their unique shapes bring out the individuality of the homeowner. It will additionally be seen as the centrepiece of the bathroom, with the sink's lines contrasting the bathroom tiles. Aesthetic balance can be achieved if the rest of the fixtures are not as outstanding.

No matter which shape you choose, it is important to keep other factors into consideration. Things like size constraint and whether the sink is drop-in or under mounted will affect functionality and easiness to repair. Hence, be open to options from all styles open designing options that you may not have thought of! Taking enough time to decide will reward you with a bathroom sink that harmonises its space.

For more information on the featured bathtubs, visit www.ashtonandbentley.co.uk.







KITCHEN + BATHROOM

INDONESIA

www.kitchenbathroomindonesia.com

The Inspiring Platform for
Modern Kitchen & Bathroom Industry



**BOOK
YOUR SPACE
NOW!**



27-30
SEPTEMBER 2017

JIEXPO
Kemayoran
Indonesia

Contact Information:

PT Wahana Kemalaniaga Makmur

Komplek Perkantoran Graha Kencana Blok CH-CI

Jl. Raya Perjuangan No. 88, Kebon Jeruk, Jakarta 11530, Indonesia

Tel: (62) 21 5366 0804 • Fax: (62) 21 5325 890/887

E-mail: info@kitchenbathroomindonesia.com

In Conjunction with:



Organized by:





SURFACES





CLASH OF THE COLOURS

Text and photo credits:
To the individual manufacturers mentioned in this article.

Weary of your plain walls? Clash things up!

While solid colours are classic, interiors are indefinitely more interesting when whimsical patterns come to play. Mixing and matching patterns can be challenging; scaling patterns against the right complimentary colours take many tries! So for a start, why not follow these easy guidelines:

1. Fix a colour palette (pastels, warm hues, gradients)
2. Combine a white base with a coloured pattern
3. Use neutral colours as a base when using large prints?

Here are a selection of different surfaces, varying in styles and materials, which can give you some insight in clashing colours correctly.



Royal Stewart by Debbie McKeegan

All patterns side match, edge to edge across the width of 62.5cm and are precision cut by hand. Each order is supplied with full hanging instructions for easy decorating. To achieve the best results, we recommend using 'Solvite' wallpaper paste to apply directly to the walls. This luxury non-woven wallpaper is made from wood pulp with added textile fibres to make the wallpaper strong, dimensionally stable and easy to hang.

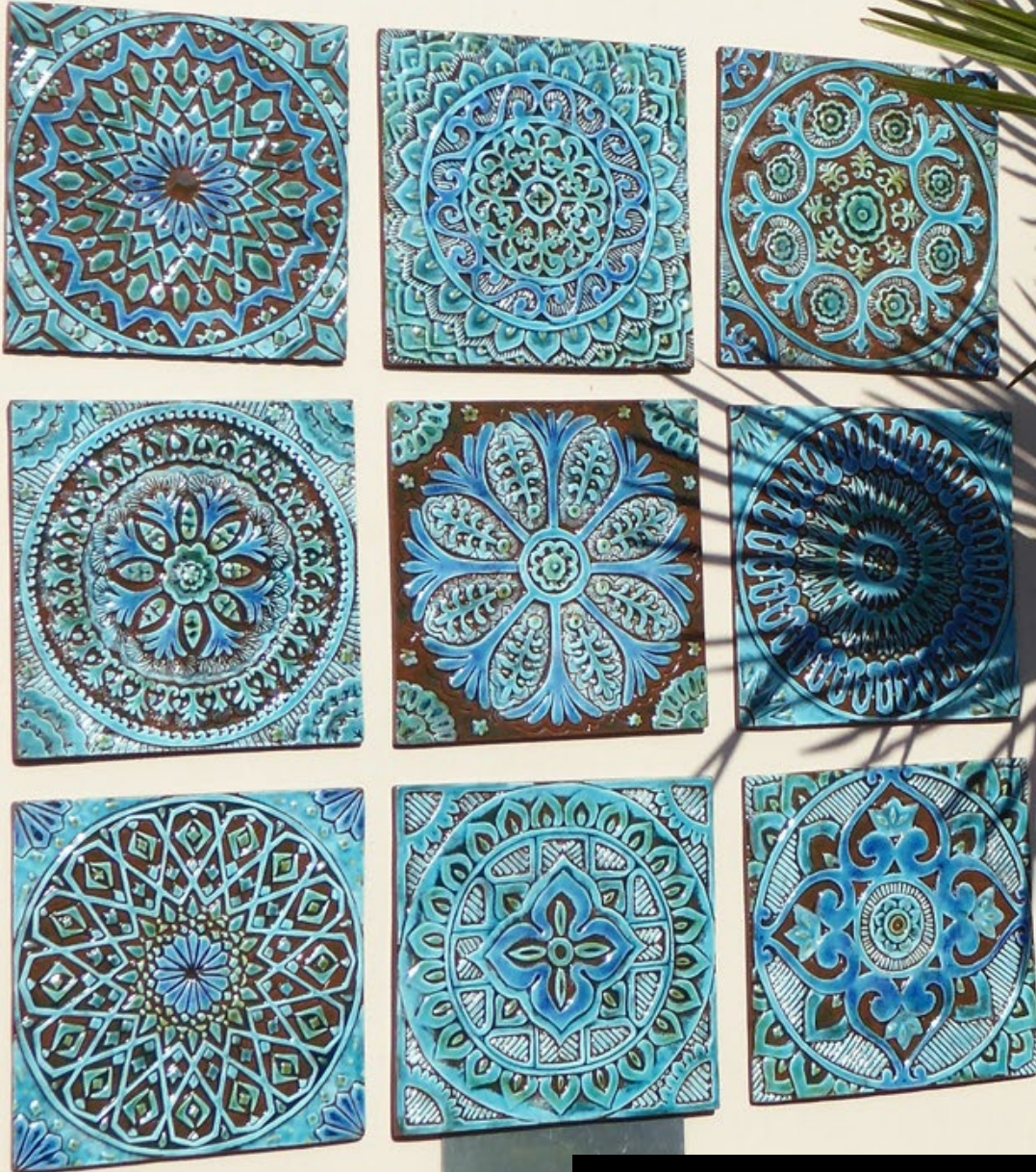
For more information, visit www.debbiemckeegan.com.

AXOR Manufaktur by AXOR

Whether an order is intended for a global project or private customer, precision and a passion for detail are of the essence in the manufacturing of exclusive sanitary fittings. Each piece of the AXOR Manufaktur is beveled and polished by hand in cooperation with the specialty departments before being checked for flawless quality. This requires a high skill level and experience in the handling of metal objects and their exquisite surfaces.

For more information, visit www.hansgrohe.com.sg/axor-manufaktur.





9 Wall Art by G.Vega Ceramica

This outdoor wall decor is made from ceramic, with each tile measures 30x30cm. They come in a set of 9 ceramic tiles, carved in deep relief and glazed in turquoise. The designs are inspired by Suzani, Mandala and Moroccan accents.

For more information, visit www.gvega.com.





TUSCAN DAWN

by **CAESARSTONE**

Inspired by the colours and patterns found in nature, Tuscan Dawn is a cool shade of taupe. This mellow shade is based with a hint of grey and brown, tinged with hues of green and lime yellow. This soft colour works well in both modern and contemporary interiors due to its versatility. It can also blend seamlessly into any vintage look with its shady, tea-stained colouring, illuminating the room in a warm and inviting glow.

www.caesarstone.sg



MP811 Olive



OLIVE

by **SEASONSTONE SINGAPORE**

Seasonstone presents the latest addition to their marble collection. This design is inspired by the lustrous olive marble from the Aegean region of Turkey. In their interpretation, Seasonstone has woven a complex diffused background of olive and grey tones augmented with a natural and subtle white vein structure. Seasonstone's advanced vibro-compaction technology used to create this engineered quartz ensures much greater resilience over their Aegean twin.

www.seasonstone.com.sg

MOSTRA CONVEGNO EXPOCOMFORT (MCE) ASIA
A sister event of Europe's longest running event where international suppliers of
SANITARY WARE, HVAC-R & SOLAR ENERGY
MEET BUYERS FROM THE SOUTHEAST ASIA COMMUNITY

**BOOK YOUR STAND
TODAY!**

Singapore registered companies
can enjoy subsidized booth
rates* in the Singapore Pavilion

*Terms & conditions apply.

[www.mcexpocomfort-asia.com
/exhibition-portal](http://www.mcexpocomfort-asia.com/exhibition-portal)



WHO YOU CAN MEET: Architects / Interior Designers / Plumbing and HVAC contractors / Agents / Developers / Distributors / Facility Managers / M&E Consultants / M&E Engineers & more ...

www.mcexpocomfort-asia.com | info@mcexpocomfort-asia.com | +65 6780 4658

Organized by:



Strategic Partners:



Supporting Partners:



Co-located events:






BATHROOM SPACES



COMPACT & CONCISE



Compact and concise bathrooms? Challenge accepted!

Bathrooms can be tricky to layout especially when space is limited. The key is to eliminate furniture you don't need – for instance, if your household do not take baths much, why not substitute the extra space for a vanity table or an extended storage cabinet? Walk-in showers are always the go-to for compact bathrooms.

Every design element in a compact and concise bathroom should have a purpose and be functional in multiple ways. For the ideal space-saving sanctuary, the design groundwork may seem challenging. To make things simple, just keep this second keyword in mind: storage-friendly!

Here is a selection of different bathroom spaces, varying in mood and style, all focusing on different aspects of what makes a compact and concise bathroom:



AXOR CITTERIO M BY AXOR

A look at the AXOR Citterio M collection reveals the unmistakable signature and styling for which the designs from the Antonio Citterio's Milan workshop are renowned: shapes that have been thought through and refined down to the tiniest detail, where gentle curves give way to clean and even surfaces in perfect harmony. "In today's world, reduction, simplicity and technology add up to the aesthetic sum total of what we perceive as beauty," declares the designer from Milan. Without creating a cool or puristic effect AXOR Citterio M embodies this very notion of beauty, with design and the quality of manufacturing working hand in hand to create objects that radiate both harmony and efficiency.





ROYAL REFLEX BY KEUCO

The reflective glass fronts of the furniture, the sensuously shaped washbasin and the illuminated mirror cabinets transform every bathroom into a special showpiece – a place where design-orientated living exerts a magical allure. A special detail offered in the ROYAL REFLEX vanity unit is a storage box hung on the drawer for the small bathroom utensils one uses every day. Another practical feature is the anti-slip mat in the drawer. Drawer dividers, which can be freely positioned, allow you to organize things perfectly. ROYAL REFLEX offers the right solution for bathrooms of every size, from the small guest WC right up to the double washbasin.







KHROMA COLLECTION BY ROCA

A daring aesthetic for a bathroom collection of great versatility and functionality. The original use of colour, in harmony with porcelain, characterises Roca's Khroma bathroom collection. A proposal in which colour, texture, comfort and technology come together in the bathroom to create a warm, personal space that at the same time displays a bold, avant-garde personality.

The innovations of the Khroma bathroom collection lie not only in the use of colour. The Khroma seats and backrests incorporate Roca Soft Texture®, an innovative, high-technology material specially designed for bathroom surfaces. The soft, warm cushioning is comfortable yet durable making it a unique aspect of the collection. Roca Soft Texture® allows for multiple uses, such as a place for reading the newspaper or to help with dressing the children as well as offering comfort in other aspects of personal care or aesthetic needs you may have.



CAST STONE

by **KON**

KON Cast Stone bathroom collection weaves contemporary functionality into everyday lives with their newest design. The new generation of the Cast Stone series of sanitary ware is environmentally friendly and, through innovative product technology breakthroughs, is available for personalization. Different shapes can be custom made to fit the bathroom's style and existing theme. With KON's impressive ability and experience, these products can be created to the user's precise specification, turning your design requirements into reality.

www.kon.com.cn







DIAMOND

by **BRAVAT SINGAPORE**

This collection presents the diamond-shaped edge of the cutting in Bravat's bathroom pieces. Bringing the geometric design to a whole new visual level, Diamond invites regal into the bathroom interiors by matching with the slightly dark wall porcelain and carpet, further contrasted with the bright white curtain to echo the elegant aristocratic. The Diamond faucet series stands as one of the attractive products in the collection, due to the high purity copper in the lasting faucet body and the zinc alloy handle, which allows a comfortable touch. Additionally, the 90 degree of German original Fluesh on the spool ensures a complete seal, achieving up to 30% water saving.

www.bravat.com.sg



RAN

by **MARCO PISATI**
www.rubinetterie3m.it

Refined, simple and elegant, the style of this new collection is the result of a perfect equilibrium between design and functionality. RAN, created in brass and characterised by a minimalist appearance which at the same time does not go unnoticed, is a true design object able to integrate itself into, and enhance, any bathroom environment.

STARCK CLASSIC

by **AXOR**
www.hansgrohe.com.sg/axor

Part of the AXOR Starck collection designed for Hansgrohe by Philippe Starck, this is the original basin mixer with feather handle first glimpsed in 1994 and now a modern classic. Available in chrome or special finishes under AXOR Manufaktur bespoke customisation service.



ECCENTRIC

by **ROGERSSELLER**
www.rogerseller.com.au

Using German progressive cartridge technology, Eccentric by Rogerseller supports energy saving by opening in a low pressure, cold position which increases in pressure with the turn of the dial. Past the middle mark, and the addition of warm water is introduced, increasing as the dial moves to its furthest open position. Progressive cartridges' energy saving benefits are particularly visible when used in basins when warm water isn't always required.



SMARTSHOWER ART

by **INSTANTAQUA**
www.instantaqua.eu

Operation of the SmartShower Art's display is very much the same as that of a smartphone – with the tap of a finger – and yet, there is one small difference. The display does not require a central button to be activated, and will operate once your hand is within a radius of 30 centimetres. The display looks somewhat like a chrome mirror, on which the data collected by the SmartShower Art is projected from behind. This, together with the new mixer shower technology, gives the SmartShower Art its modern and sleek looks.

SYNERGY

by **FIT ITALIA**
www.fir-italia.it

The shower heads with chromotherapy system by Fir Italia offer the possibility to choose among eight different colours: red, green, blue, yellow, purple, blue, violet, white. Thanks to the use of the waterproof remote control, you can choose and select a shade or even start the automatic transition from one colour to the other. The chromotherapy effect function is independent from the use of water.



NERO

by **RUBINE**
www.rubine.it

The matt black rain shower in the Nero series promises to bring a touch of sleek to any bathroom. Available in both round and square head design, it fits seamlessly into the existing aesthetics of the space. With its stunning looks and functionality, this ultra-modern all square flat tube design allows water to be easily diverted from handset to overhead drencher with inbuilt diverter. It is finished in the latest electroplated matt black for enhanced durability.



OLYMPIA

by **ASHTON AND BENTLEY**
www.ashtonandbentley.co.uk

The imposing design and comfort of the Zeus has inspired the creation of the Olympia, the body has been remodelled to create a slender bath full of character.

ESPLANADE

by **DURAVIT**
www.duravit.co.uk

The bathtub resembles a chaise longue and the bathroom furniture has distinctive handles: dark brown loops made of genuine, hand-sewn leather in high-quality chrome surrounds. Available in two very different colours: 'Oak', a striking dark wood panelling, and 'Silk' a particularly high-quality white varnish that harmonises with the ceramics to perfection.



CHELSEA

by **HASTINGS TILE AND BATH**
www.hastingstilebath.com



Hastings' "Chelsea Small" solid-surface tub is the perfect choice for bathrooms that need to deliver a statement, even where space is limited. With its elegantly curved design, Chelsea is equally attractive in its soft matte or sleek glossy finishes.



ELKAY ANTIMICROBIAL COPPER SINK

by **ELKAY**
www.elkay.com

Elkay's signature CuVerro Antimicrobial Copper lavatory sink will give any commercial bathroom a classic and clean look. This durable sink creates a compelling presence while providing the upmost sanitation. These sinks are all made with Antimicrobial copper, which is the only touch surface material registered by the U.S. Environmental Protection Agency (EPA) to continuously kill more than 99.9% of the bacterial within two hours.

MARQUINA TAUPE

by **STONE FOREST**
www.stoneforest.com

This newest version of their Renaissance and Vintage Console tops is created using Marquina marble. Marquina features hints of brown and tinges of purple, bisected by bold white veins. Scaled perfectly, these vanities are elegant without being ostentatious. Vintage console legs are available in multiple finishes including Polished Nickel.



CAMI

by **RONBOW**
www.ronbow.com

Crisp and chic, the Cami vanity is petite and perfect for any smaller space or powder room. With multiple top and vessel options, Cami is flexible enough to accommodate any design. Soft-close doors in wood or frosted glass and lavish finished wood throughout the interior make this vanity modern and functional. Metal feet in polished chrome or brushed nickel and a matching mirror, medicine cabinet or wall cabinet take personal space to a whole new level.



KHROMA

by **ROCA**
www.sg.roca.com

A completely integrated toilet with a built-in bidet and an array of innovation – comprehensive air deodorizer, soft seat and back, instant heated rim, “Findme” night-light design and many other functions to make our life cleaner, comfortable and easy. It combines the stylish design, variety of fashionable selected colors and state-of-the-art bathroom technology for a complete awakening of all your senses.

OVE DUAL FLUSH

by **KOHLER**
www.kohler.com.sg

Inspired by the curved organic forms of an oriental noodle spoon, Ove toilet offers a contemporary take on bathroom design. Featuring a Vario Trap with Dual Flush option, this toilet provides a refreshingly clean, contemporary design that can fit in any modern bathroom settings.



JEWELHEX

by **Toto**
asia.toto.com

Jewelhex transforms your environment into a distinctive, one-of-a-kind living space. The durable surface material has unique dimensions and angles that add a touch of creativity to your environment.



POLAROLL

by **YELLOW OCTOPUS**
www.yellowoctopus.com.au

The Polaroll Toilet Paper Holder is a quirky way to dispense your toilet paper. No, it wouldn't take pictures of you inside the bathroom but it would help you have clean toilet paper ready for your needs. Although it depicts a Polaroid camera, it really doesn't take pictures and make photographs of whatever you do inside the bathroom. It's just a really quirky way to store and dispense toilet paper.

UMBRA

by **BLACK BY DESIGN LTD**
www.black-by-design.co.uk

Everything you need to complete your bathroom- a soap dish, soap pump, toothbrush holder, toilet brush, tumbler and waste bin, the Fiboo collection from Umbra brings a touch of modern style to your bathroom through its clean and fluid lines, along with its understated and subtle colour. Made of melamine and bamboo fibre the Fiboo collection isn't just nice to look at, it's also very durable.



QUADRANT

by **SMITHS BRITEN**
www.purebathroomcollection.co.uk



Complete the look of the showering area with a quality shower tray. The JT Naturals Trays are all made to order and are just one of the options available from the Pure Bathroom Collection by Smiths Briten.



MYANMAR BUILD & DECOR

Building Materials, Interior, Furniture & Decor

5 - 7 October 2017

Yangon-Myanmar

4th International Exhibition on
Myanmar Build & Decor

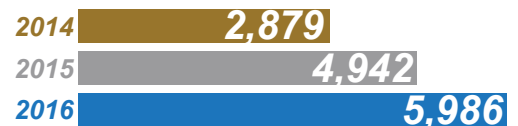
Myanmar's Best Source for
Building Materials, Interior Design,
Furniture and Decor

WWW.MYANMARBUILDDECOR.COM
INFO@ICVEX.COM
Tel : +66 2713 3033

Fast Facts

- Myanmar's construction sector registered a 7.2% compound annual growth rate from 2011 to 2015, and is set to carry a 10.37% annual growth rate from 2016 to 2020.
- Myanmar construction industry's value stood at US\$8.2 billion in 2015, and is anticipated to value US\$13.5 billion in 2020.
- FDI in 2015-16 real estate sector raked in roughly \$345 million worth of foreign investment flowed into the real estate market in Myanmar through the end of January 2016 with nearly \$100 million of that sum invested in January alone.

Growing Number of Visitors



Exhibitor's Feedback



Organized by



Officially supported by



Main sponsor



Supporting media





KITCHEN SPACES



Getting **KINAESTHETIC** in the kitchen



Kitchens are taking the design world by storm.

From new functions to complete reinterpretations, kitchens are one of the top reinvented rooms in any home. Forget boring handles and bland colours; nowadays, kitchens stun with their take on what used to be everyday elements. Marble-glazed islands, rustic lightbulbs and ultra-stylish touch cupboards? Check!

This issue, we take a look at four kitchens that each epitomizes their own idea of 'reinvention'. From cupboards that open at a single graze to brick walls backlit by soft lights, these kitchens are powerhouses of creativity on their own. Moving about the kitchen just got a lot more elegant.

Here are four kitchen muses that would get the inspiration juices going.





Monte Santo by SieMatic

The exciting, versatile re-interpretation of the traditional kitchen sideboard, which, in addition to numerous other awards, recently received the prestigious international German Design Award in Gold from the "Rat für Formgebung" (German Design Council). This multifunctional and highly flexible piece of freestanding furniture was developed in cooperation with the Berlin design team of KINZO and represents a "signature piece" in the latest of the timelessly elegant SieMatic style collections: URBAN. Each of the SieMatic style collections presents a contemporary philosophy of life that is expressed not only in furniture design or in the selection of colors and materials, but in holistic room planning concepts.

www.siematic.com



New York Comfort by Reginox

Reginox is launching a new series of sinks named New York Comfort. Further investments in the company's state-of-the-art machines in combination with the latest technology have resulted in the new New York Comfort sink unit. New York Comfort series is a stylish deep-drawn sink without welding seams.

The super sleek design, with its smooth 10-mm radius inner and outer corners, makes the unit easy to clean as no dirt or waste remains behind in the corners. Additionally, it features an elegant design of overflow, with the waste outlet actually deep-drawn and pressed into the sink bowl, creating an even toned appearance and optimal hygiene. This makes the sinks extremely easy to clean – an added bonus for style-conscious homeowners who don't take too lightly to household chores. It is a sink of the highest quality designed to improve your experience within the kitchen.

www.reginox.com







KUHLSCHRANK

by **DESIGN BOTSHAFT**

The 50s cult refrigerator SMEG and denim blue jeans. The FAB28 Denim is the latest special edition of the Fifties-style line. A special plasma treatment, the jeans fabric against water, grease and other stains and odors is protected. Thus, the refrigerator is not only visually but also haptically a special highlight. Typical seams in Auburn make the jeans look perfect.

www.designbotschaft.com





GLASSWORKS

by **ORIGINAL STYLE**

This decorative glass tile with a crushed pearl effect is from Original Style's Glassworks collection. Shown in 'Aduro', this unique piece measures 600 x 300 x 8mm.

www.originalstyle.com





HEDGEROW

by **WINCHESTER TILE COMPANY**

This amazing 22 tile Hedgerow panel in full colour is perfect for creating a stunning splashback in a country kitchen. Handmade ceramic tiles, made in the UK. Available in grey, sepia or white and 22 tile or 16 tile versions.

www.winchestertiles.com



CLASSIC DIAMOND

marketed by **KITCHENAID**
www.kitchenaid.com

KitchenAid Diamond Blenders are great for all kinds of culinary creations. The clever diamond shaped design of the 1.75 litre jug pulls the ingredients down to the centre for really thorough blending. It also features a really efficient tri-blade that'll make light work of chopping your ingredients. From puréeing fresh fruits for baby food or crushing ice to add to cocktails, it's great at tackling both hard and soft foods. It even has a soft start function designed to gently blend your food, before increasing in speed. This setting is ideal if you're making hot soup as it removes any lumps and prevents splashing.

KÜHL- GEFRIERKOMBINATION

marketed by **SMEG**
www.designbotschaft.com

The FAB refrigerators from the 50th Style series of the SMEG brand are among the design and cult objects on the market. They stand for state-of-the-art cooling technology, rounded shapes, a characteristic handle and are available in numerous bright colors. This style icon is truly a winning object that enchants every space.



OUTDOOR OFEN

marketed by **ROCKET STOVE**
www.dmax-shop.de



Everything that the environmentally friendly outdoor oven needs is a few dry branches and time. In 7 minutes, it brings water to the cooking and gives meals for up to 8 people. Thus, compared to an open fire, it reduces the cooking time by approximately 50%, and also emits up to 82% less smoke and toxic substances.



METRO

marketed by **NEWPORT BRASS**
www.newportbrass.com

Metropole exemplifies Newport Brass' fine manufacturing, quality construction and innovative design. The magnetic docking secures hand spray in place and offers enhanced directional control via toggle-controlled spray engine and pivoting ball inlet fitting. Made of solid brass.

TOD

marketed by **WATERMARK DESIGNS**
www.watermark-designs.com

Tod represents Watermark's Brooklyn-made craftsmanship, combining impeccable design and ergonomic ease-of-use. It uses linear valve technology incorporated into handles. It has a clean focal point via low-profile escutcheon with a 1 1/4" diameter. This classic spout option available in all 36 finishes.



PIANA

marketed by **KWC**
www.kwc.com

The Piana's unique, architectural design gives a stylish face to the high-end functionality afforded by KWC. The single-lever mixer offers pull-out length up to 23 5/8". Any hard water deposits easily removable with KWC jetclean™ technology (filter included with pull-out spray). It has a swivel range of 130°.



STAINLESS

marketed by **JOHN LEWIS**
www.johnlewis.com

For clean, contemporary and minimalist surroundings, inset stainless steel sinks blend perfectly with modern furniture, appliances and decor. Durable and easy to care for, their stylish good looks will not fade. Stainless steel inset sink with right hand drainer, punched tap hole and a 90mm waste outlet for basket strainer waste (tap not included). Suitable for a waste disposer.

CLARON

marketed by **BLANCO**
www.blanco-germany.com

It is equipped with a concise 10 mm radius for more design - without sacrificing functional advantages, in an elegant-pure design with no visible base pattern. It offers optimum utilisation of the bowl capacity thanks to extra deep bowls and smallest possible radii. Armed with the InFino™ drain system – gracefully integrated and easy-care, this double bowl's self-contained functional surface is not divided by a granite partition.



ELEGANCE

marketed by **NIRALI SINKS**
www.niralisinks.com



Nirali's D'signo range has been introduced since 15 years. This range has now become the most preferred range across the country. D'signo range consists of 18 models in 24 sizes, available in single bowl, vegetable bowl, one extra small bowl and in drain board as well.



MRS. BEAN

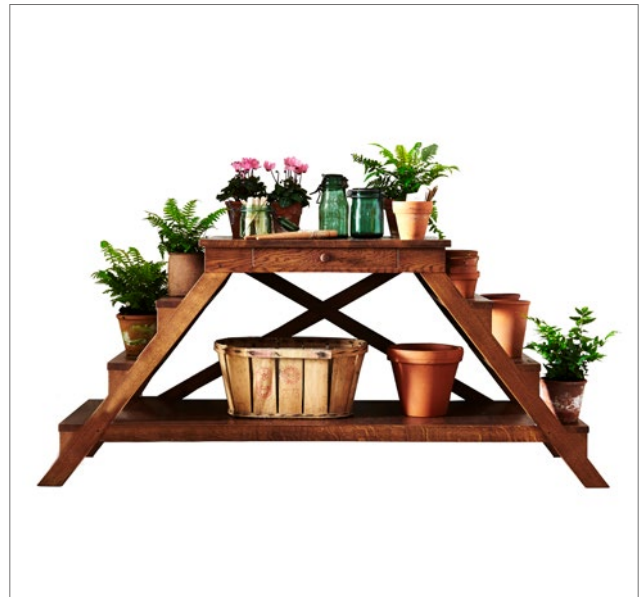
marketed by **KAFFEEMÜHLE**
www.design-3000.de

The modern coffee grinder, which makes the grinding of coffee beans an effortless pleasure. MRS. BEAN works manually via a crankshaft. Your high-performance mill grinds the beans extra-gently. A viewing window indicates how many beans are inside MRS. BEAN. If you need to replenish the power, simply pull the gearhead with the crank, you can fill the coffee grinder.

CONSERVATORY TABLE

marketed by **TAVISTOCK**
www.titchmarsh-goodwin.co.uk

When the Dowager Duchess of Bedford wanted a piece of furniture made, she turned to Titchmarsh Goodwin, whose design office worked with the Duchess until the "Tavistock" table was born. Hand-made from solid English oak with six deep steps for plants or objects, a pot board, and a roomy drawer, this piece of furniture can live up and be useful anywhere it is placed.



QUAD LOOP

marketed by **DOWSING AND REYNOLDS**
www.dowsingandreynolds.com



It's beautiful to look at and is reminiscent of the traditional Edison style vintage bulbs. The spiral quad loop filament is aesthetically pleasing and emits a warm, soothing light. It's perfect for using it as just a bare bulb, hanging from a length of uber-cool fabric cable.



12 - 14 April 2017
Kuala Lumpur Convention Centre (KLCC)
Kuala Lumpur, Malaysia



Ecobuild SEA & ICW 2017 are the leading construction events for Southeast Asia specifiers in the built environment and energy market. Attracting over 10,000 industry professionals, senior level decision makers and influencers from architects and developers to local government and major infrastructure clients.

The 2017 the event will focus on 'Quality and Safety' to reflect the importance of improving quality and safety in construction to keeping up with industry growth. It will also showcase market priorities such as building, housing, infrastructure, technology and innovation, and exploring sustainability as a driver to innovation and growth, a catalyst for regeneration and as a way for organisations to do better business.

UBM Malaysia is organising Ecobuild Southeast Asia 2017, to be held from 12 to 14 April at the Kuala Lumpur Convention Centre (KLCC), hosted by Construction Industry Development Board (CIDB) Malaysia. This event will mark the fourth year of partnership with the International Construction Week 2017, positioned as the region's leading event for sustainable design, construction, energy and the built environment. This year's theme, "Towards Enhancing Quality & Safety in Construction", pits perfectly with one of the pillars of the Malaysia Construction Industry Transformation plan till 2020(CITP).



The construction industry is recognised as a prime economic mover in Malaysia and projected to remain robust in 2017, as Budget 2017 was announced in October 2016 by the Prime Minister. Significant investments were made in public infrastructure projects, which include the MYR55-billion East Coast Rail Line, construction of rural bridges and roads (worth MYR1.2 billion), new schools (MYR478 million), schools for the poor (MYR570 million), and the improvement of the water supply network (MYR732 million).

Therefore, the opportunities created in the booming construction industries have attracted the gaze of companies in the region. Exhibitors Techtronic Power Tools (M) Sdn Bhd , UAC Berhad, Xinyi Energy Smart (Malaysia) Sdn Bhd, Mesh Hi Tech (Malaysia) Sdn Bhd , Jana Tanmia Resources, Bubble Deck Construction Sdn Bhd, Protasco Berhad, Ply Tec Fencing System Industries Sdn Bhd, Perceptive Profile Sdn Bhd and other companies have confirmed their participation in Ecobuild Southeast Asia 2017. Event visitors include a wide range of participating groups including government procurers, wholesalers, architects, contractors and consultants.

Ecobuild Southeast Asia 2017 has co-located events, such as Asean Solar 2017, Ecolight Asean 2017, Energy Efficiency, Greenbuild Asia, Construction Show, AseanREI and Construction Career Fair. These events are expected to attract more than 15,000 attendees from around the world, to engage in activities and to interact with the key industry players. Ecobuild Southeast Asia is serving to connect the entire built environment supply chain in one seamless experience.

CDP points will be gained upon attending paid conferences organised by the supporting stakeholders, as such Master Builders

Association Malaysia, The Chartered Institute of Building, Kubena and Urban Forum. Meanwhile, free-to-attend seminars are organised into streams, presenting a number of topics that include quality, safety and professionalism, as well as environmental sustainability, productivity and internationalisation, reflecting the categories emphasized under CITP.

Seminar speakers range from industry experts to innovators and practitioners from Construction Industry Development Board Malaysia, Public Works Department Malaysia, Malaysia Structural Steel Association, The Institution of Fire Engineers, The Chartered Institute of Building, Nuclear Malaysia and International Workplace. Also, International Construction Week and Ecobuild Southeast Asia offer a perfect platform to the next generation of the construction industry. Young designers will be challenged to join "MSSA/CIDB Open Ideas Competition Youth 2017 – Dome in Steel [YouDo]", which is co-organised by Malaysia Structural Steel Association.

This competition promises a highly challenging project that involves designing a steel dome. The design will reflect innovation, sustainability and cost effectiveness in designing a domeshaped structure that sits on a 5-acre site. This project for the youth will see more than 10 universities of 30 teams and 150 students competing for the MSSA Challenge trophy and prizes. Also, business matching will be organised by Matrade and CIDB to bring in overseas buyers.

The goal is to connect dedicated local suppliers/exhibitors with premier buyers for sourcing purposes. The connections are arranged by business matching specialists through face-to-face meetings.

For more information, visit www.ecobuildsea.com.



9 - 11 November 2016
Jakarta Convention Centre
Jakarta, Indonesia



With Indonesians moving to the cities at a faster pace than anyone else in Asia, the construction industry in the country is booming. US\$ 550 billion worth of government investments are planned by 2019 to meet the burgeoning demand of an economy that is expected to be the world's fifth by 2030.

"By 2025, it is estimated that about 68% of the population will be living in urban areas in Indonesia, according to the Oxford Business Group. With US\$22.9 billion worth of State budget allocated for infrastructure development in 2016, there's a growing demand for construction materials and technologies in the country," Patrick Gedeon, Event Manager of The Big 5 Construct Indonesia 2016 said.

Over 300 manufacturers from more than 25 countries, including Germany, Italy, Turkey and China, will gather and meet thousands of buyers and construction industry professionals looking for the latest solutions for the built environment at the Jakarta Convention Center from 9-11 November 2016. On its second edition, The Big 5 Construct Indonesia will host world renowned companies of the construction sector like Acrow Misr, Alclubond, BMW, Durkee America, Hoffman, Insutech, JCB, Kirby, Leica, Pedax and Robert Bosch, exhibiting products never before seen in Indonesia.

Co-located with Konstruksi Indonesia 2016 and part of Indonesia Infrastructure Week, Indonesia's largest gathering of infrastructure stakeholders and decision makers, The Big 5 Construct Indonesia 2016 will host many new exhibitors and product launches.

Precast Software Engineering, a leading provider of software solutions for the precast industry headquartered in Salzburg, will present its high-performance software, PLANBAR and TIM, offering integrated and model-based precast parts design with visualisation along the entire process. "At present, precast parts factories frequently need to submit their offers on the basis of rudimentary layout plans or very basic models of the building contractors.

"In practice, this often does not lead to the required precisions and cost certainty," Christiane Ganster, spokesperson of Precast Software Engineering, explained. "The SalesManager we developed, calculates quickly and easily quantities automatically from the building model, generates lists and graphic reports and transfers the data to a calculation programme. It also offers complete visualisation, which can then be sent to the customer as a 3D PDF."

For the first time at The Big 5 Construct Indonesia, multinational company ALUCOBOND®, a leading brand of aluminum composite material for architecture and cladding applications, will showcase its innovative finishes. "We will present unique applications using ALUCOBOND materials that will be of huge interest to architects, façade consultants and developers in Indonesia," Aditya Kothari, Director Marketing Architecture & Display Asia at ALUCOBOND®, said.

The event will also host the launch of the world's first floor drain cover that mitigates smell and insects, while saving water. Singaporean exhibitor, Ilet Pte Ltd, a one stop solution provider from design development to engineering and installation, will take part for the first time at The Big 5 Construct Indonesia bringing its sustainable solutions that also help reducing energy and plastic waste.

According to industry expert Ir. Davy Sukamta, principal and founder of Davy Sukamta & Partners, "The Indonesian construction industry must make a breakthrough in the use of high-quality material and workmanship, using cutting edge technologies, while maintaining 'construct for longer life-use expectancy' philosophy in their work."

Ir. Sukamta, who is also President of HAKI (Indonesian Society of Civil and Structural Engineers), will host a session dedicated to "The Design of a supertall building. The Indonesian Experience: Indonesia-Satu Tower" at The Big 5 Construct Indonesia 2016 on Nov 10. Beyond the exhibition, the event will host in fact more than 20 CPD certified and free to attend workshops, offering insights into challenges and opportunities facing the country's construction industry.

Hot topics like the adoption of BIM and sustainable infrastructures in Indonesia will be debated by industry experts like Arief Rahman, BIM Manager PP Construction, and Ir. Iwan Prijanto, Strategic Master Planner & Urban Transit Designer & Chairman IABHI. Luke Devine, Foreign Legal Consultant Hadiputranto, Hadinoto & Partners will navigate the audience through the complexities of infrastructure project finance in Indonesia, while Martin Wierikis, Managing Director SEPAM Consultants, will deliver a presentation on "Smart cities and technologies for urban development and water management".



A free to attend Green Building Council Indonesia Seminar themed 'We are the last generation to save planet earth' will take place on the third day of the event, Nov 11, exploring the Green Building Industry and the necessary requirements to meet globally recognized Green Building certification. In addition, free to attend workshops from the Association of Architects in Indonesia (IAI), The Indonesia Association of Precast and Prestress Companies (AP3I), and the National Contractors Association of Indonesia (GAPENSI) will also be running alongside the show, making The Big 5 Construct Indonesia the perfect platform for participants to upskill in the latest construction related topics.

Features like the "Excavator Challenge" and the "Selfies at Height" will entertain the expected 10,000 visitors at The Big 5 Construct Indonesia 2016 and the co-located Konstruksi Indonesia 2016. Indonesia Infrastructure Week will also host the first ASEAN G2B (government-to-business) Infrastructure Investment Forum, where both the public and private sectors across ASEAN countries can meet to discuss development challenges and the Global Meetings Programme, an online and onsite free business matching and networking tool open to all IIW participants.

For more information, visit www.thebig5constructindonesia.com.



ASIA

THE LEADING
SWIMMING POOL
AND WELLNESS EVENT



RCS LYON 380 552 976 - © elvathedesign.fr

5-6
APRIL
2017
**THE
POOL
LIFESTYLE**

MARINA BAY SANDS - SINGAPORE
www.piscine-global.com



Supported by



Held in



CONTACT Alexandra MONCORGÉ
alexandra.moncorge@gl-events.com - +33 (0)4 78 176 301



Subscription Form

Fax your order today
+65 6842 2581

(Please tick in the boxes)

Southeast Asia Building



building
Roman Catholic Church of Saints Peter & Paul
SINCE 1974

1 year (6 issues)

Singapore	S\$45.00
Malaysia / Brunei	S\$90.00
Asia	S\$140.00
America, Europe	S\$170.00
Japan, Australia, New Zealand	S\$170.00
Middle East	S\$170.00

Bathroom + Kitchen Today




bathroom + kitchen
KITCHEN SPACES
BATHROOM SPACES
BREAKING BARRIERS
SINCE 2001

1 year (4 issues)

Singapore	S\$32.00
Malaysia / Brunei	S\$65.00
Asia	S\$80.00
America, Europe	S\$130.00
Japan, Australia, New Zealand	S\$130.00
Middle East	S\$130.00

Southeast Asia Construction



CONSTRUCTION
SINCE 1994

1 year (6 issues)

Singapore	S\$45.00
Malaysia / Brunei	S\$90.00
Asia	S\$140.00
America, Europe	S\$170.00
Japan, Australia, New Zealand	S\$170.00
Middle East	S\$170.00

Lighting Today



lighting today
VOLLRADS CASTLE
SINCE 2002

1 year (4 issues)

Singapore	S\$32.00
Malaysia / Brunei	S\$65.00
Asia	S\$80.00
America, Europe	S\$130.00
Japan, Australia, New Zealand	S\$130.00
Middle East	S\$130.00

Security Solutions Today



Security Solutions Today
SINCE 1992

1 year (6 issues)

Singapore	S\$45.00
Malaysia / Brunei	S\$90.00
Asia	S\$140.00
America, Europe	S\$170.00
Japan, Australia, New Zealand	S\$170.00
Middle East	S\$170.00

Lighting Audio Visual Asia



Lighting Audio Visual Asia
SINCE 2013

1 year (4 issues)

Singapore	S\$32.00
Malaysia / Brunei	S\$65.00
Asia	S\$80.00
America, Europe	S\$130.00
Japan, Australia, New Zealand	S\$130.00
Middle East	S\$130.00

IMPORTANT Please commence my subscription in _____ (month/year)

Personal Particulars

NAME: _____

POSITION: _____

COMPANY: _____

ADDRESS: _____

TEL: _____ FAX: _____

E-MAIL: _____

Professionals (choose one):

- Architect
 Landscape Architect
 Interior Designer
 Developer/Owner
 Property Manager
 Manufacturer/Supplier
 Engineer
 Others

I am sending a cheque/bank draft payable to:

Trade Link Media Pte Ltd, 101 Lorong 23, Geylang, #06-04, Prosper House, Singapore 388399
RCB Registration no: 199204277K * GST inclusive (GST Reg. No: M2-0108708-2)

Please charge my credit card (circle one): Amex / Diner's Club

Card Number: _____ Expiry Date: _____

Name of Card Holder: _____ Signature: _____

Calendar of Events

APRIL 2017

Piscine Asia 2017

5 – 6 April
Sands Expo & Convention Centre
Marina Bay Sands, Singapore
Email: alexandra.moncorge@gl-events.com
Website: www.piscine-asia.com

Ecobuild Southeast Asia 2017

12 – 14 April
Kuala Lumpur Convention Centre
Kuala Lumpur, Malaysia
Email: ecobuild-sea@ubm.com
Website: www.ecobuildsea.com

MAY 2017

Architect Expo 2017

2 – 7 May
IMPACT Muang Thong Thani
Bangkok, Thailand
Email: info@TTFintl.com
Website: www.architectexpo.com

SEPTEMBER 2017

MCE ASIA 2017

12 – 14 September
Marina Bay Sands, Singapore
Email: info@mcexpocomfort-asia.com
Website: www.mcexpocomfort-asia.com

Kitchen + Bathroom Indonesia 2017

27 – 30 September
Jakarta International Expo
Jakarta, Indonesia
Email: info@kitchenbathroomindonesia.com
Website: www.kitchenbathroomindonesia.com

OCTOBER 2017

Myanmar Build & Décor 2017

5 – 7 October
Myanmar Event Park (MEP)
Yangon, Myanmar
Email: info@icvex.com
Website: www.icvex.com

ADVERTISERS' INDEX

ARCHITECT THAILAND 2017	39	KITCHEN + BATHROOM INDONESIA 2017	54
BRAVAT	13	KON	17
CAESARSTONE	IFC	MCE ASIA 2017	64
CASA	3	MYANMAR BUILD & DÉCOR 2017	84
DURAVIT	23	NINGBO BOSHENG	15
ECOBUILD 2017	43	PISCINE ASIA 2017	106
ECONFLO	7	REGINOX	IBC
ELKAY	5	ROCA	9, 11, OBC
HANSGROHE	1	SEASONSTONE SINGAPORE	21
KEUCO	19		

DUTCH DESIGN. MADE IN HOLLAND

REGINOX, luxurious design of unparalleled comfort and efficiencies to enhance your lifestyle. Being Netherland's largest producer of stainless steel sinks, the international brand has consistently introduced innovative designs and technology via an exclusive gallery of sinks, taps, wash basins, integrated gas hobs, worktops and accessories.

With an eye for people and environment, Reginox occupies a leading position in the global market. We believe not just quality, we go further to put the crown on your kitchen. Whatever your style or taste, Reginox always has the perfect solution for you.



 @reginoxfe

Retailers:

- Bravat Singapore Pte Ltd**, 1 Commonwealth Lane, #01-10/17 One Commonwealth, Singapore 149544. (65) 6659 1868
- Bretz & Co Pte Ltd**, 1 Nassim Road, #01-02, Singapore 258458. (65) 6336 9926
- Ecnflo Systems Pte Ltd**, 401 Commonwealth Drive, #01-01, Lobby B, Haw Par Technocentre. Singapore 149598. (65) 6396 3738
- Home Niche Singapore Pte Ltd**, No.1 Kaki Bukit Road One, #01-06, Enterprise One, Singapore 415934. (65) 6273 8005
- Hemsley Holding Pte Ltd**, 39a Jalan Pemimpin, #07-01, Halcyon Building, Singapore 577183. (65) 6337 3136
- Ideal Bathroom Pte Ltd**, 545 Balestier Road, Singapore 329866. (65) 6255 5111
- Tiong Yeong Hardware Pte. Ltd.**, 1 Syed Alwi Road #01-01, Song Lin Building, Singapore 207628. (65) 6292 6633
- Wan Tai & Co (Pte) Ltd**, 25 Changi South Ave 2, Singapore 486594. (65) 6456 5900
- W.Atelier Pte Ltd**, Level One, 75 Bukit Timah Road, Singapore 229833. (65) 6270 8828

Reginox Far East Pte Ltd
 2 Loyang Lane
 #03-03
 Singapore 508913
 Tel : (65) 6788 5363
 Fax: (65) 6788 3835
 Email: info@reginox.com.sg
 Website: www.reginox.com



ARMANI / Roca

A new bathroom concept

ROCA MALAYSIA SDN. BHD. (5554-M)

Level 3A, West Wing, Quattro West, No. 4, Lorong Persiaran Barat, 46200 Petaling Jaya, Selangor Darul Ehsan, Malaysia
Tel: +03 7952 2522 · Fax: +03 7952 2696 · www.my.roca.com · enquiries@my.roca.net

ROCA BATHROOM PRODUCTS SINGAPORE PTE. LTD. (199503842Z)

8 Burn Road #12-07 Trivex, Singapore 369977
Tel: +65 6333 4080 · Fax: +65 6636 7476 · www.sg.roca.com · enquiries.sg@sg.roca.com