

SEAB

SOUTHEAST ASIA BUILDING

**ALL NEW LOOK
& CONTENT!**



The Warehouse Hotel Singapore

ARCHITECTURE + INTERIOR Angioino Castle in Apulia; Architectural Heritage Awards (AHA) 2017 winners & 2017 UNESCO Asia-Pacific Awards for Cultural Heritage Conservation winners **ARCHITECT'S CORNER** Interviews with the Green Architect of the Year award winners in Singapore

Download our new Tradecards
Global App on iOS and Android
to read the latest issue!



Produced by
**Integrated
Systems
Events**



**smart
building
conference
ise**

05 FEBRUARY 2018
AMSTERDAM
NETHERLANDS

From Smart Buildings to Smart Cities

Smart Building at Integrated Systems Europe

- Full-day conference with over 30 speakers on 5 February
- Leading architect, inventor and Professor at MIT, Carlo Ratti, live on stage
- Guided Smart Building tour
- Dedicated Smart Building hall and theatre



@SmartBuildingCo

www.smartbuildingconference.com

HeartFelt®

Introducing new Felt Ceiling System
High impact resistance and 100% recyclable
Generate optimal acoustic control

www.hunterdouglas.asia



reddot award 2017
best of the best



HunterDouglas 
Architectural



SMAhome Conference & Exhibition 2018
**Where Smart Home
Innovations Take Shape**

Home Security | Home Automation | Connected Home

25 – 27 April, 2018

Taipei Nangang Exhibition Center, Taipei, Taiwan

smahome.tw.messefrankfurt.com



 **messe frankfurt**

ULTRABOND®

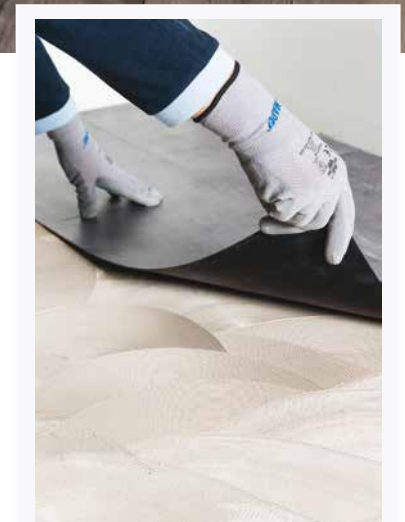
ECO VS90 Plus

ECO-Adhesive for PVC, LVT and rubber floorings



Universal highly shear resistant, hard set, wet bed dispersion adhesive

- Excellent wetting of LVT backings;
- Low to no waiting time;
- Very good peel strength;
- Excellent dimensional stability;
- EC1 Plus, with very low emission level of volatile organic compounds;
- Certified for the installation of LVT in naval application;
- Harmless to the health of the installer and end-user.



Mapei is with you: take a closer look at www.mapei.com.sg

Product info



Mapei Far East Pte Ltd

28 Tuas West Road, Singapore 638383

Tel: +65 68623488 Fax: +65 68621012/13

Website: www.mapei.com.sg Email: mapei@mapei.com.sg



CONTENTS

jan - feb 2018

Features

NEWS FEATURE

- 34 Virtual Reality and the Construction Industry – An interview from Victaulic
- 36 Virtual Design Center – dormakaba's new virtual headquarters
- 38 Post-earthquake prototype house gets World Building of The Year 2017 award
- 42 IDCS Design Excellence Awards 2017 honours the Best Interior Designers of the Year
- 45 Winners of the LafargeHolcim Awards 2017 Asia Pacific receive prizes

ARCHITECTURE + INTERIOR – Conservation & Preservation Architecture

- 54 Angioino Castle in Apulia – A project by Mapei
- 58 Architectural Heritage Awards (AHA) 2017 in Singapore winners announced
- 64 2017 UNESCO Asia-Pacific Awards for Cultural Heritage Conservation winners unveiled

ARCHITECT'S CORNER – Interview

- 74 Interviews with the Green Architect of the Year award winners in Singapore

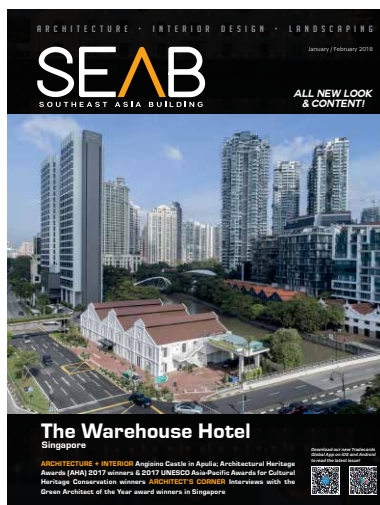
Regulars

News

- 8 News from Asia Pacific, Middle East & the World

Events Calendar

- 33 Guide to international trade shows, expos & fairs



On the Cover: The Warehouse Hotel in Singapore. Photo: © The Warehouse Hotel

Cover design by Fawzeeah Yamin

PUBLISHER

Steven Ooi (steven.ooi@tradelinkmedia.com.sg)

EDITOR

Amita Natverlal (seab@tradelinkmedia.com.sg)

GROUP MARKETING MANAGER

Eric Ooi (eric.ooi@tradelinkmedia.com.sg)

MARKETING MANAGER

Felix Ooi (felix.ooi@tradelinkmedia.com.sg)

SENIOR MARKETING EXECUTIVE

Jee Yin Woon

(jeeyin.woon@tradelinkmedia.com.sg)

HEAD OF GRAPHIC DEPT/ADVERTISEMENT

CO-ORDINATOR

Fawzeeah Yamin

(fawzeeah@tradelinkmedia.com.sg)

GRAPHIC DESIGNER

Siti Nur Aishah (siti@tradelinkmedia.com.sg)

CIRCULATION

Yvonne Ooi

(yvonne.ooi@tradelinkmedia.com.sg)

Disclaimer

All advertisers and contributors must ensure all promotional material and editorial information submitted for all our publications, must be free from any infringement on patent rights and copyrights laws in every jurisdiction. Failure of which, they must be fully liable and accountable for all legal consequences (if any) that may arise.

The Editor reserves the right to omit, amend or alter any press release submitted for publication. The publisher and the editor are unable to accept any liability for errors or omissions that may occur, although every effort has been taken to ensure that all information is correct at the time of going to press. No portion of this publication may be reproduced in whole or part without the written permission of the publisher.

The editorial contents contributed by consultant editor, editor, interviewee and other contributors for this publication, do not, in any way, represent the views of or endorsed by the Publisher or the Management of Trade Link Media Pte Ltd. Thus, the Publisher or Management of Trade Link Media will not be accountable for any legal implications to any party or organisation.

Southeast Asia Building is available free-of-charge to applicants in the building industry who meet the publication's terms of control. For applicants who do not qualify for free subscription, copies will be made available, subject to acceptance by the publisher, for a subscription fee, which varies according to the country of residence in the following manner:

Annual Subscription

Airmail: America/Europe – S\$170, Japan, Australia, New Zealand – S\$170, Asia – S\$140, Brunei – S\$90, Malaysia – S\$90

Surface mail: Singapore – S\$45

(Incl 7% GST Reg No: M2-0108708-2)

Printed in Singapore by KHL Printing Co Pte Ltd

MCI (P) 098/07/2017 KDN No: 1560 (1270) – (6)

ISSN 2345-7066 (Print) and ISSN 2345-7074 (E-periodical)

Trade Link Media Pte Ltd also publishes:

- Bathroom + Kitchen Today
- Lighting Audio Visual Asia
- Lighting Today
- Security Solutions Today
- Southeast Asia Construction

SOUTHEAST ASIA BUILDING is published bi-monthly by:

Trade Link Media Pte Ltd, 101 Lorong 23, Geylang,

#06-04, Prosper House, Singapore 388399

Tel: +65 6842-2580 Fax: +65 6842 2581

Editorial e-mail: seab@tradelinkmedia.com.sg

Website: www.tradelinkmedia.com.sg

Co. Reg. no: 199204277K

GRUNDFOS iSOLUTIONS

INTELLIGENT CONNECTIVITY

IN COMMERCIAL BUILDINGS



SEIZE THE FUTURE OF INTELLIGENT CONNECTIVITY TODAY

Intelligent connectivity is set to transform the future of building applications, utilising new technology to create fully connected, autonomous systems. And with Grundfos iSOLUTIONS, you can seize the opportunities provided by intelligent connectivity now. Grundfos iSOLUTIONS brings intelligent connectivity to advanced pump solutions to help you achieve a new level of system performance with greater energy efficiency, reduced complexity, low life cycle costs and more.

See how Grundfos iSOLUTIONS can optimise your commercial buildings at: www.grundfos.sg/intelligent-connectivity

be
think
innovate

GRUNDFOS 



Our New Look...

Welcome to the Jan/Feb 2018 issue of *Southeast Asia Building*. As you may have noticed, we have launched a newly designed magazine and we hope you find the sections more interesting and the overall experience more enjoyable.

We have introduced a new masthead – SEAB – which stands for Southeast Asia Building – to create a strong identity for the magazine. We have also rolled out new fonts and page labels to give it a more modern touch. All the articles will have a clean and neat layout packed with high quality images to make it visually attractive and easy to read.

In terms of the sections, we will be featuring more news, building projects and conversations with architects and industry professionals to keep you updated with the latest trends and developments in the industry.

With the new design, we have given the magazine a much-needed revamp to keep up with the demands of our readers. Please let us know if you see something we should address.

On behalf of the SEAB team, here's wishing each and every one of you a Happy New Year 2018!

Amita Natverlal

NEXT ISSUE THEMES

- Architecture + Interior – Hotels
- Special Feature – Waterproofing
- Product Focus – Flooring
- Architect's Corner



Scan to visit our website
<http://seab.tradelinkmedia.biz>



Like us at
www.facebook.com/southeastasiabuilding



Follow us
@SEA_Building

Southeast Asia Building is proud to be a media partner of:



Bangladesh Green Building Council



Green Building Council Indonesia



Green Building Council Mauritius



Philippine Green Building Council



Singapore Green Building Council



Vietnam Green Building Council



Emirates Green Building Council



Qatar Green Building Council



Green Building Council Italia



Jordan Green Building Council



Green Building Council Sri Lanka



The Hong Kong Institute of Architects



Association of Myanmar Architects



Foundation for Futuristic Cities



Green Building Council Namibia



Interior Design Confederation of Singapore



Society of Interior Designers (Singapore)



Design Council - Sri Lanka



Green Building Committee BEI MYANMAR

D'NEST



playpoint
imagination @ play

PLAYGROUND | WATERPLAY | INTERACTIVE PLAY | 3G FITNESS | SKATEPARK | STREET FURNITURE

Singapore | Malaysia | Philippines | Vietnam | Indonesia | 1 Sims Lane #06-12 Singapore 387355 | Tel: (+65) 6398 1558 | Fax: (+65) 6398 1559 | Email: info@playpoint.com.sg

Building blocks for a smart nation

Singapore – The Architecture & Building Services 2017 Series (ABS Series) took place from 4 to 6 October 2017 at the Sands Expo & Convention Centre at the Marina Bay Sands Singapore.

The mega show, which presented six of the leading architectural and building services shows and 12 key conferences for these industries, was declared open by guest-of-honour, Mr Desmond Choo, Member of Parliament for Tampines GRC, Mayor of North East District & Chairman of North East Community Development Council.

ABS 2017 is a mega platform, which serves the architecture and the building management industries. Spearheaded by ArchXpo 2017, the ABS Series also presented five other important showcases; iFAME 2017 (International Facility Management Expo), LED & Light Asia 2017, Safety and Security Asia 2017, Fire & Disaster Asia 2017, and Work Safe Asia 2017. Together, the shows presented a comprehensive and integrated platform for all building needs for the region, under one roof. The series welcomed about 7,800 visitors from 52 countries, among them some 4,000 conference delegates, to the showcases spanning over 10,000 square metres. The visitors were among the first to see the latest solutions, technologies and products that will form the building blocks of a Smart Nation. The products were presented at the show by 143 exhibitors from 15 countries.

Industry Showcases

ArchXpo 2017, organised by the Singapore Institute of Architects (SIA) and Conference & Exhibition Management Services Pte Ltd (CEMS), is an international exhibition for architecture and the built environment showcasing technologies, products and services for the architectural and build environment industries. ArchXpo is also a key pillar of the Archifest series. Along with the SIA Conference 2017, the exhibition was a key gathering of industry experts and talents that make for excellent architectural and built environment design. It also served as an invaluable platform for the exchange of research and innovation in architectural design, practice and education.

Safety & Security Asia 2017, part of the ABS Series, showcased outstanding



Opening Ceremony of Architecture & Building Services 2017 at Marina Bay Sands on 4 October 2017. Photo: © Conference & Exhibition Management Services Pte Ltd (CEMS)

concepts, new designs and products in the field of security.

A Learning Hub

The three-day mega show of six international showcases also played host to the delegates of 12 major conferences for the architectural and building services industries. The 12 conferences included the SIA Conference 2017, International Facility Management Conference (IFMC) 2017 and two sessions of the Fire Safety Managers' Association Singapore (FSMAS) Fire Safety Workshops 2017 on 4 October 2017, IFMC Master Class 2017, SBA. Connect Forum 2017, Security Industry Conference (SIC) 2017, Real Estate Developers' Association of Singapore Building Information Modelling (REDAS BIM) Symposium 2017 and the 15th SISO Annual WSHO Conference 2017, on 5 October 2017 and the Workplace Safety &

Health (WSH) Council Forum for FM Sector 2017, SIA Fire Safety Seminar 2017, Security Industry (SIC) Masterclass 2017, United Architects of the Philippines Lecture Series 2017 and REDAS BIM Masterclass 2017 on 6 October 2017.

Awards and Accolades

To encourage and offer a platform to recognise companies at the forefront of their industry, there were four prestigious award ceremonies held at the ABS 2017. The awards give due recognition to talents, innovations and outstanding designs. The awards were:

- Merlion Awards 2017
- Singapore Facility Management Awards 2017
- Unique Presentation (UP) Awards 2017
- SIA Architectural Designs Awards 2017

For more information, visit www.archxpo.com.sg.

TECHNAL PRESENTS

AMAZONIE TOWER
RENOVATION PROJECT

IMAGINE
WHAT'S NEXT

Sliding systems - Windows - Doors - Façades
www.technal.asia

✉ contact@technal.asia ☎ +[65] 6240 0170 📍 10 Changi South Lane #06-01 Singapore



Creating new possibilities with Technal

Amazonie Tower, designed in the 70s, has been restored to give new life and a new dynamic to the building. Technal created tailor-made aluminium closure systems, including guardrails and suspended slide windows. These loggias not only give more space and more comfort to the inhabitants but also create a buffer zone which improves the tower's thermal performance and acoustic insulation.

Technal has made-to-measure solutions for all your projects, adding personality and unique levels of comfort.

For more information about this project and our solutions, please visit our website:

www.technal.asia



Aedas earns a double win at 2017 ICSC Asia Pacific Shopping Center Awards

Dalian, China – Aedas-designed Olympia 66 received a double win and was awarded both Gold and Sustainable Design awards for Design and Development – New Developments amid keen competition at 2017 International Council of Shopping Centre (ICSC) Asia Pacific Shopping Center Awards.

Designed by Global Design Principals Christine Lam and David Clayton, Olympia 66 is a statement of innovative design as a landmark in the city of Dalian, China. The design respects Chinese culture and urban context, with the thoughtful approach to its relationship to the street providing generous community space and plazas with integrated landscape. This seven-storey shopping mall grasps the fine balance between a complex form and functions, responding to the immediate surroundings and local community and providing the largest shopping, lifestyle and leisure complex in Dalian.

The design creates a contemporary statement with an oriental overtone, defining an iconic city destination. The design drew inspiration from the twin carp, a symbol of wealth and abundance in Chinese culture which are typically used in Chinese New Year paintings. The interplay of two swimming carp inspired a dynamic form which allows a loop circulation flowing through a continuous chain of retail, atrium and event spaces to the sky-plaza and central roof garden, creating an exciting and diverse lifestyle experience. Internal curving arcs resemble the dancing carp, with the expression of a series of simple shells with the tail flowing over the curving central spine.

The shells on the roof are layered to create clear storey glazing, allowing direct and reflected light into the two atria. The main facade is composed of hexagonal modules with various lighting effects recapturing the reflective scales of a carp.



Photo: © Aedas

Benoy helps to shape Hong Kong's New Central Harbourfront

Hong Kong – Benoy's urban design team has created a series of initial ideas to spark conversation and promote innovative thinking for the future of Hong Kong's New Central Harbourfront Site 3, which spans from Jardine House to the Central Ferry Piers, and is part of the government's new Central Harbourfront initiative.



Photo: © Benoy

While commercially driven, the planning brief for the redevelopment of Site 3 offers the opportunity to maximise public benefit for citizens and visitors to Hong Kong. The team at Benoy studied the planning brief and analysed the basics of the site, including key constraints and existing uses, to conceptualise a range of solutions with input from BuroHappold Engineering. Three of these concepts are represented by the thematic code names "Urban Forest", "Glacier" and "Coral Reef".

"Each solution has different characteristics, but all respond to the need for connectivity, activity and a rich mix of uses within the plot," explained Simon Bee, Global Design Director at Benoy. "The concepts offer an early representation of how Site 3 might be transformed to become a new waterfront destination that is an accessible, attractive public place, but also commercially viable. We hope to encourage the design and development community in Hong Kong to push the planning brief to its full potential."

Sembcorp continues to make its mark in renewables and sustainable businesses with expansion to energy portfolio in Singapore

Singapore – Sembcorp Industries (Sembcorp) is pleased to announce that it will be developing two grid-tied rooftop solar energy systems at ST Aerospace's facilities in Changi and Seletar. This is Sembcorp's second rooftop solar energy deal to serve the aerospace and aviation industry in Singapore.

Both photovoltaic systems will be built, owned, operated and maintained by Sembcorp and have a combined capacity of 4.1 megawatts. Construction for the Changi and Seletar rooftop solar systems will begin this month, and is targeted to be completed by February 2018 and April 2018 respectively. These solar energy systems will supply renewable power directly to the ST Aerospace facilities. The combined project cost for the two systems of approximately S\$5.4 million will be funded internally.

Neil McGregor, Group President and CEO of Sembcorp Industries, said, "Sembcorp is honoured to be named the green energy partner of ST Aerospace, which is the largest airframe maintenance company in the world. With Sembcorp's new photovoltaic systems, ST Aerospace's facilities will be powered by renewables and will

reduce their carbon footprint.

"This project strengthens our track record in solar power for the aerospace and aviation industry. It also adds to our renewable energy portfolio and demonstrates Sembcorp's commitment to greener energy for Singapore, as we progress towards an open electricity market."

The ST Aerospace rooftop solar energy project is Sembcorp's fourth such project, and its second to serve a client in the aerospace and aviation industry here. It follows the announcement of similar solar energy projects at two airfreight terminals at Singapore's Changi Airport, as well as at the premises of Asia Pacific Breweries Singapore and Stolthaven Singapore. Globally, Sembcorp has over 2,000 megawatts of renewable energy and energy-from-waste capacity. This includes wind and solar power, as well as biomass and energy-from-waste assets in Singapore, China, India and the UK. This project is not expected to have a material impact on the earnings per share and net asset value per share of Sembcorp Industries for the financial year ending December 31, 2017.

LATHAM

design engineers & manufacturers



sales@latham-australia.com



Stair Treads



Terrazzo & Tile Control Strips



Expansion Joint Covers

The Original and Still The Best

High quality world renowned architectural building products at affordable prices and fast delivery



GOOD DESIGN Selection
AGBIA STAIR TREADS, TERRAZZO, DIRTY CONTROL, SLIP RESISTANT ENTRY MATS & SAFETY FLOORING PRODUCTS
Designed in Australia
Licence No. 95282
Good Design Australia



AUSTRALIAN MADE AND OWNED

WWW.LATHAM-AUSTRALIA.COM

Exclusive local agents and distributors in most countries

Shanghai Disney Resort honoured with China's highest construction industry award

Shanghai, China – Since the grand opening in 2016, millions of guests from home and abroad have already enjoyed the world-class attractions at Shanghai Disney Resort, and appreciated the immersive environment that the resort has created. In recognition of its outstanding engineering, exquisite project design and planning, its superior construction technology, its goal to provide a magical and seamless experience for Chinese guests, Shanghai Disney Resort was awarded the 2016–2017 China Construction Engineering Luban Prize, the highest honour for engineering quality in China's construction industry.

"Our goal from day one was to create an authentically Disney, distinctly Chinese destination for the people of China," said Howard Brown, General Manager and Regional Executive, Walt Disney Imagineering Asia. "Over the course of five years, Disney Imagineers led more than 100,000 construction workers, engineers, artisans and other professionals from across China and around the world to build a magical, immersive entertainment experience that only Disney can deliver, creating a world-class resort that marked a key milestone in the development of Shanghai's tourism industry," added Mr Brown.

Throughout the construction stage from 2011 to 2016, the Walt Disney Imagineering Shanghai team worked collaboratively with Chinese contractors to bring new design and construction techniques to the design and construction of this world-class destination. The Disney team worked with a group of leading Chinese construction general contractors to manage each discipline and phase of resort construction, creating a unique partnership of Disney global standards with local expertise and resources. As part of this collaboration, the Disney team introduced new skills and practice techniques to the construction industry to foster local expertise in leading global construction standards and practices.

In addition to its rigorous construction quality standards, Shanghai Disney Resort also integrated innovative technologies and green concepts throughout the entire project. The novel application of building information modeling (BIM) and digital immersive showroom (DISH) technology in the project's development stage, as well as the adoption of environmentally friendly and energy-efficient technologies across the planning and construction processes, demonstrate Shanghai Disney Resort's leading standards and



Photo: © Shanghai Disney Resort

industry advancements in China and around the world.

The China Construction Engineering Luban Prize is known as the "Oscars" for the construction industry in China. Jointly created 30 years ago by the Ministry of Housing and Urban-Rural Development and the China Construction Industry Association, this prize has become the most coveted honor in the industry. The Luban Prize has rigorous application, evaluation and screening processes, and ultimately the winners represent an elite selection among similar construction projects from across the entire country.

The construction and development of Shanghai Disney Resort has been recognized with multiple awards and honors in addition to the China Construction Engineering Luban Prize, including the Technology in Architectural Practice (TAP) Award from the American Institute of Architects (AIA) for the successful adoption of BIM, and Three-Star and Two-Star awards, respectively, for the Team Disney Building and the Toy Story Hotel from the Green Building Evaluation Label (GBEL).

Building Information Modeling (BIM) technology was used for Pirates of the Caribbean: Battle for the Sunken Treasure and Enchanted Storybook Castle, as two examples. Recognising these efforts, the American Institute of Architects presented its prestigious Technology in Architectural Practice Award to the team for its use of BIM in the creation of Enchanted Storybook Castle.

Sodexo strengthens technical capabilities by acquiring a leading facilities management provider in Singapore

Singapore – Sodexo, a world leader in Quality of Life services, announces that Kim Yew Electrical & Sanitary, a leading hard Facilities Management services provider in Singapore, has joined the Sodexo family from November 2017.

Since its founding in 1985, Kim Yew has built up a strong reputation in the field. Today, it is one of Singapore's top hard Facilities Management (FM) service providers, boasting a team of 450 employees providing quality services to leading education and public sector

clients. Kim Yew Electrical & Sanitary will now operate as a wholly-owned subsidiary of Sodexo Singapore under its new name, Sodexo Kim Yew Pte Ltd.

Johnpaul Dimech, Asia Pacific Region Chairman & Singapore Country President, Sodexo said: "Combining Sodexo's capabilities in FM and food services with Kim Yew's technical expertise in hard FM services allows to enhance our service offering and address the needs of the growing integrated FM services market in the region. By blending the strengths of our teams, we are able to boost our quality of life positioning and provide our consumers with a greater diversity of services and optimise greater efficiencies."

Sodexo Kim Yew will reinforce Sodexo's technical expertise in Singapore. Sodexo will be better able to address the growing demands of seamless integrated FM services and consumers will enjoy greater service integration.

Jim Tan, Founder and Managing Director of Kim Yew Electrical & Sanitary, said: "Kim Yew and Sodexo both started off as family businesses and we share the belief that our employees are our greatest assets. I am excited to introduce Kim Yew employees to the Sodexo family. As an international company with a strong focus on health and safety, I am confident that Sodexo will bring best-in-class practices to develop the company and further provide growth opportunities to our employees."

For over 35 years, Sodexo in Singapore has been serving clients across a range of industries – public agencies, multinational corporations, educational institutions, healthcare institutions and offshore facilities, constantly bringing new innovations to enhance the quality of life of its consumers.



Sodexo employee optimising facilities at a client site. Photo: © Sodexo

DESIGN THROUGH CONSTRUCTION

VICTAULIC® CONSTRUCTION PIPING SERVICES



"The spool drawings provided by Victaulic were exceptionally good. They were labeled, numbered and essentially fool-proof – the team was able to quickly fabricate the spool pieces based on the information, and knew exactly where each assembly belonged on the site."

Site Supervisor,
Arts Centre Christchurch NZ



© 2017 VICTAULIC COMPANY. ALL RIGHTS RESERVED.

Andaz Singapore opens doors as first Andaz Hotel in Southeast Asia

Singapore – Hyatt Hotels Corporation announced the opening of Andaz Singapore, the first Andaz hotel to open in Southeast Asia. Andaz Singapore furthers the brand's mission to create inspiring, indigenous experiences that immerse guests in the local culture of each unique destination. The hotel marks the seventeenth property for the brand and joins other Andaz hotels in global gateway cities and top resort destinations around the world.

Located at the heart of cultural crossroads, where Kampong Glam, Little India and the Bras Basah Bugis arts and entertainment hub meet, the locally-inspired hotel draws inspiration from its lively surroundings – intimate alleyways filled with shop houses in vibrant colours and textures – and weaves this ambience into the hotel to offer guests fresh perspectives of the city. The hotel is a short 20 minutes drive from Changi Airport and only a five minutes



drive to Singapore's Central Business District.

"We are extremely excited to open Andaz Singapore and to bring the inspirational and creative Andaz brand to Southeast Asia," said General Manager Olivier Lenoir. "By bringing in the local spirit of our surrounding neighbourhoods and offering fresh perspectives, Andaz Singapore aims to inspire a sense of discovery."

Andaz Singapore opens in DUO, a striking pair of concave skyscrapers, 186 and 170 metres

high, clad in a latticework of hexagonal windows. Designed by multi-award-winning German architect Ole Scheeren, renowned for his works with the China Central Television Headquarters in Beijing and Prada Epicenters in New York and Los Angeles, DUO is the largest integrated development in the Ophir-Rochor district and comprises of residences, retail spaces, offices and the new Andaz Singapore hotel. DUO is directly connected to Bugis MRT station via underground

pedestrian walkways, providing easy access to all corners of the city.

Andaz Singapore, in collaboration with famed interior designer Andre Fu of AFSO, envisioned the hotel as a modern cultural discovery, which embraces Singapore's urban spirit. Fu observed the hotel's dynamic location and its neighbourhood to create a dreamscape of passageways and incorporated subtle, locally inspired techniques, decorative details, furniture, art and fabric into the hotel's design.

A number of acclaimed artworks are showcased in the hotel; colour-saturated pieces by Brazilian sculptor André Mendes and other remarkable works from local Singaporean artist Ahmad Abu Bakar, New York-based Filipina artist Monica Delgado and Malaysian artist Fauzulyusri Mohd Yusof. Andaz Singapore houses 342 contemporary guestrooms, including 26 suites, with floor-to-ceiling windows framing stunning views of the city.

GreenUrbanScape Asia 2017 returns for third edition bringing trade professionals and consumers under one roof

Singapore – GreenUrbanScape Asia, a leading platform unifying both greenery and landscape design communities, returned for its third edition on 9–11 November 2017 at the Singapore EXPO Convention and Exhibition Centre with various firsts, including the engagement of communities not involved in previous iterations of the event.

This year, new communities were engaged, such as landscape construction companies, non-profit green groups as well as gardening enthusiasts and hobbyists via the inaugural Consumer Marketplace. The event aimed to become Asia's only end-to-end landscape, leisure, greenery design, construction and technology event that brings together stakeholders from both public and

private sectors, as well as academics and consumers, in addressing revolutionary green approaches to integrate social needs into urban infrastructure.

Jointly organised by Landscape Industry Association (Singapore) (LIAS), the National Parks Board (NParks), Singapore Institute of Landscape Architects (SILA) and SingEx Exhibitions, the three-day GreenUrbanScape Asia 2017 event attracted over 4,000 trade professionals and buyers from over 30 countries. Themed "Symbiosis: INTENSE Nature Within Cities", the event featured both trade exhibition and consumer components, as well as the 4th edition of the International Skyrise Greenery Conference in a single setting

to facilitate the exchange of ideas and innovation at both trade and consumer level.

There were close to 100 participating companies and brands at GUSA 2017, including leading players in the landscape and urban design, equipment, materials and components, urban solutions and technology, as well as complementing services. These included Parks & Play, Greenology, Makita Singapore, Multico Equipment & Parts, Swan-Li (Singapore), amongst others. The Government Pavilion will also feature project showcases by statutory boards including NParks and the Urban Redevelopment Authority.

Inspired by placemaking, Garden Zones were introduced and strategically placed around the trade show floor, creating unique, impactful areas that redefine the overall User Experience at GUSA 2017. Each "Themed Area" served a familiar activity that had been creatively brought to life:

- Meeting Garden – Outdoor garden themed meeting zones
- Resting Garden – Zen-inspired rest and relax zones
- Edible Garden – 'Farm-to-Fork' organic produce through a mobile kitchen
- Garden of Innovation – Workshops on technological disruption in landscaping

4th International Skyrise Greenery Conference (ISGC) focused on resilience, new levels of greening and integrating social needs into urban infrastructure

Held alongside the GreenUrbanScape Asia trade exhibition, the 4th International Skyrise Greenery Conference (ISGC) took place on 9-10 November 2017, and drew over 700 local and regional delegates. As a thought leader in the region in the exchange of ideas and showcase on landscaping for cities of the future, ISGC presented key takeaways for delegates to draw lessons from the challenges nature presents, shaping intents, outcomes and the bottom line of greening projects.

The conference covered 26 key topics through four plenary sessions – "Vertical Resilience, Cities on a New Level", "Placemaking and Therapeutic on the Rise" and four parallel tracks – "Green Roofs – My New Backyard, Verticality and Safety, Hidden Challenges,



Photo: © GreenUrbanScape Asia 2017

and Biotech and Innovation", presented by 27 industry-renowned speakers representing 13 cities, namely Brisbane, Copenhagen, London, Melbourne, Neubrandenburg, New York, Paris, Singapore, Sydney, Taipei, Tokyo, Toronto and Zurich. Featured speakers include:

- Ms. Pénélope Komitès, Deputy Mayor in charge of Green Spaces, Nature & Biodiversity, The City of Paris
- Mr. Rasmus Astrup, Partner, SLA Architects, Copenhagen
- Prof. Dr. Manfred Koehler, President, World Green Infrastructure Network, Toronto & Vice-Dean, Neubrandenburg University of Applied Sciences, Neubrandenburg
- Mr. Gavin McMillan, Senior Principal, Hargreaves Associates, New York

ISGC delegates also had the opportunity to participate in the highly popular guided Technical Tour to various award-winning skyrise greenery projects in Singapore on 11 November 2017, to experience how landscape architects push the boundaries of design and integrate social needs into urban infrastructure.

Newly introduced marketplace to engage consumers in the conversation of green living

Aiming to facilitate creativity, learning and knowledge sharing opportunities in reinforcing Singapore as the world's greenest city through green urbanism, the Consumer Marketplace was introduced at GUSA 2017 to engage an amalgamation of gardening hobbyists, community green groups, as well trade professionals in revolutionising the approach to citizen well-being.

With more than 20 vendors providing an array of fresh plants and flowers, natural and organic wellness products, gardening supplies, landscaping design and implementation services, as well as lifestyle and smart gardening solutions, the Marketplace is set to attract majority of Singapore's green thumb community. Apart from product vendors, the Marketplace will also feature free talks and demonstrations, hands-on workshops, as well as a balcony garden showcase for exploration of ideas. The first 100 visitors to the Marketplace will receive a free goodie bag, each filled with gardening supplies for the green fingers.

For more information, visit www.greenurbanscapeasia.com.



Photo: © GreenUrbanScape Asia 2017



MEGA BUILD

INDONESIA

The 17th Indonesian Dedicated Architecture, Interior Design, Building Exhibition & Conference

15-18 MARCH 2018
at Jakarta Convention Center,
Indonesia

Co-located with:



OUR 2017 ACHIEVEMENTS

20
Countries

37,276
Visitors

30,000
Sq.m of exhibition space



 megabuildID
 MegaBuildExpo
 Megabuild Expo
 www.megabuild.co.id



13 POWER
PACKED
SEGMENTS

The perfect one-stop platform that showcase a full range of building materials, design solutions, systems and technology for the fast growing Building & Construction Industry in Indonesia.



CALL OUR REPRESENTATIVES   

Mr. Eric Anthony
+62 21 2556 5003 / +62 878 7700 2211
eric.antonius@reedpanorama.com

Mr. Nicky Marsab
+62 21 2556 5027 / +62 857 1019 7676
tjhua.nicky@reedpanorama.com

Mr. Ricky Chandra
+62 21 2556 5028 / +62 818 418 483
ricky.chandra@reedpanorama.com

For Marketing & Sponsorship :
Mr. Riyan Haritama
+62 21 2556 5022 / +62 812 10750 353
riyan.haritama@reedpanorama.com

Organised by: 

Supported by: 

Media Partner: 

First hospital in Cyberjaya to be completed by 2020

Cyberjaya, Malaysia – The community of Cyberjaya will see the completion of its first hospital in the area by 2020. Spanning 12.8 acres in the vicinity of Cyber11, the 288-bed facility will not only serve the residents of Cyberjaya but also those in Puchong, Dengkil, and Sepang. The public hospital will consist of a 9-storey complex and will be complemented with an 8-storey multi-level carpark, for a total of 965 parking bays.

"Hospital Cyberjaya is an example of efforts by the government in providing smart facilities and solutions for the rakyat as the country forges ahead in increasing the standards of our healthcare system," said Datuk Seri Dr S. Subramaniam, Minister of Health Malaysia at the groundbreaking ceremony of the hospital on 25 September 2017.

According to the Health Minister, this hospital will be built with attention to environmental sustainability and energy-efficient design features.

"Apart from Hospital Cyberjaya, there are approximately 10 other hospitals being built in the country that are designed with green features, adhering to the Green Building Index (GBI) certification standards of sustainability. On that note, I am pleased to announce that Hospital Cyberjaya will be the first hospital in the country to achieve Platinum Rating under the GBI certification standards," said Datuk Seri Dr S. Subramaniam.

Sustainability features of the RM475 million facility include optimal solar orientation and solar energy harvesting technology. Upon its expected completion in November 2020,



YB Datuk Seri Dr S. Subramaniam, Minister of Health, Malaysia performing the act of groundbreaking witnessed by YBhg. Tan Sri Dr. Mohd Irwan Serigar bin Abdullah, Chairman, Cyberview Sdn Bhd and other VIPs.
Photo: © Cyberview Sdn Bhd

the hospital will also help to reduce congestion at public hospitals in neighbouring Putrajaya and Serdang by serving a broader community beyond Cyberjaya.

"Announcement for Hospital Cyberjaya could not have come at a more significant time as the city celebrates its 20-year journey of transformation," said Mohd Najib Ibrahim, Acting Managing Director of Cyberview Sdn Bhd.

"As we continue our focus towards Cyberjaya's transformation into a Global Tech Hub, we remain fully committed in ensuring that the city continues to meet the evolving needs of our communities. This includes infrastructure like the Hospital Cyberjaya here which will stay true to our roots by featuring innovative and sustainable features for the benefit of the people," added Mohd Najib.

According to Mohd Najib, the word 'innovation' has become a buzzword which

is synonymous to patents and profits, but in Cyberjaya's smart city setting, what is beneficial for the community must take precedence. Hospital Cyberjaya will be the pioneer hospital to use full modules under HIS@KKM, a government hospital information system platform used to efficiently manage systems including the Pharmacy Information System, Patient Management System, and Critical Care Information System, among others.

Hospital Cyberjaya is one of Cyberjaya's many upcoming developments to further the city's offerings, which is inclusive of the 11 major announcements made by Prime Minister Datuk Seri Najib Tun Razak at Cyberjaya's 20th Anniversary celebration back in May this year. The announcements – which include Phase 1 of the Cyberjaya City Centre, an establishment of an R&D and Innovation hub, regional fintech hub, as well as a centre for big data projects, aim to catalyse

strategic collaborations and accelerate Cyberjaya's offerings as a Smart City and a Living Lab for innovations across its infrastructure, economy, sustainability, and social elements.

Last August, Cyberview Sdn Bhd confirmed the appointment of Gadang Engineering (M) Sdn Bhd as the principal contractor for the hospital.

"It is always important for us to work with strategic partners who are capable in delivering in ways that meet Cyberjaya's smart city infrastructural needs. We look forward to this collaboration and we are confident that Gadang Engineering has the ability to meet and deliver against expected requirements," said Ahmad Faizul Ramli, Head of Project Management Division, Cyberview Sdn Bhd.

According to Ahmad Faizul, the 288-bed facility will also have an area allocated for future expansion to accommodate an additional 150 beds.



R+T ASIA 2018 SNAPSHOT

R+T Asia 2018, coming to Shanghai from March 20–22, will present the latest trends in roller shutters, doors/gates, windows, and sun protection systems. The show is the industry's premier exhibition in the Asia region. Held at the New International Expo Centre (SNIEC) in Shanghai, over 50,000 square meters of exhibition space will be allocated, attracting more than 520 exhibitors and more than 30,000 professional visitors.

Thanks to the show's matchmaking initiatives, educational conferences and exhibits, and its international and exclusively B2B format, R+T Asia accelerates the process of creating new business opportunities. Consequently, the show generates an excellent return on the investment of time and expense for all participants.



InnovAction & IWDS

The popular InnovAction competition returns for 2018! This special program is highly anticipated by visitors as it highlights the industry's newest and most innovative products and ideas.



The International Window & Door Summit (IWDS) 2018, the only high-end international conference in the Asia-Pacific region for the sun protection and door & gate industry, is back under the umbrella, "Think bigger, think better." Experts from global associations will share the industry's latest news and trends, presenting case studies and best practices. These high-level speakers include the nominee of InnovAction Prize from the R+T 2018 show in Stuttgart.

The IWDS for sun protection products will discuss ideas and solutions in two discussion panels. One focuses on the smart home of the future, and the other will discuss sun-shading solutions when they are combined with the whole building.

The IWDS for the door & gate sector will present two discussion panels as well. Its two featured topics are the safety of opening and closing the door and the importance of the door as a part of the whole building.

Get your ticket now!

The online pre-registration system is still open at <http://rtasia.org>, allowing you to save money and time. Pre-registrants will receive full show previews, e-alerts, and invitations to networking events and special show promotions. In addition, one lucky pre-registrant will win a trip to R+T Asia 2018. **Scan the QR code below** and take two minutes to pre-register online.



Come to Shanghai and enjoy
this rewarding combination of
3 days of exhibitions, events,
and conferences from
March 20–22, 2018!



Leading Asian trade fair for roller shutters, doors/
gates, windows and sun protection systems
20 - 22 March, 2018 | Shanghai New International
Expo Centre (SNIEC) | Shanghai, China

C&W Services Singapore wins Best Facility Management Service Provider of the Year and Innovation Excellence Awards

Singapore – C&W Services Singapore has confirmed its position as the industry leader in facility management after being named Best Facility Management (FM) Service Provider of the Year for the second year running, at the recent Singapore Facility Management (FM) Awards 2017. It also scooped the Singapore FM Service Provider Award for Innovation Excellence.

The awards ceremony was held on 4 October 2017 in conjunction with the fifth International Facility Management Expo 2017 and the fourth International Facility Management Conference 2017. The event was co-organised by the Singapore Chapter of the International Facility Management Association and Conference & Exhibition Management Services.

The Best FM Service Provider of the Year award is considered the highest industry accolade in Singapore. C&W Services Singapore was awarded the prize for the successful introduction of a food waste digester system. This has enhanced site recycling efforts and reduced long-term waste disposal costs, in line with the Singapore government's drive for a smarter, more sustainable nation.

The Innovation Excellence award was awarded for the successful implementation of mobile cameras with two-way voice communication accessible via a cellphone, as well as drones which provide a bird's eye view of the estate that we manage. This system addresses illegal dumping, encroachment and parking issues commonly faced by our tenants. The implementation of these solutions have helped to improve the estate environment and image. Since the implementation, there has been a reduction in the number illegal dumping cases within the estate.

"Winning these two coveted awards is attributed to our



The C&W Services Singapore team at the International Facilities Management Conference 2017. Photo: © C&W Services Singapore

innovative solutions that address our customers' complex challenges while delivering excellent services. It's an honour to be recognised as the industry leader in facility management services and I am very proud of our teams that serve our customers," said Jun Sochi, Managing Director, C&W Services Singapore.

Mitsubishi Electric to build elevator training centre at Inazawa Works in Japan



Tokyo, Japan – Mitsubishi Electric Corporation has announced that it will strengthen its education system for installation technicians, including by constructing an elevator training centre at the Inazawa Works, the company's mother factory for the manufacture of elevators and escalators. In light of the increasing global demand for elevators, the company plans to use the facility to enhance the quality of its elevator installations and deliver higher levels of safety, peace of mind and comfort.

The training centre is scheduled to begin operation in October 2018. The aim is to raise the number of new-installation technicians in Japan to 1,000 and installation supervisors outside Japan to 350 by the fiscal year ending in March 2020.

Rendering of the elevator training centre.



WHERE THE ENTIRE INDUSTRY COMES TOGETHER

R+T ASIA MAXIMIZES YOUR SUCCESS

- Best purchasing platform in the Asia – Pacific Region
- Exclusively B2B format
- Matchmaking initiatives
- Easy access to effective information
- Excellent service and business support
- Educational and international
- Outstanding exhibitors and professional visitors

50,000 square meters

31,149 visitors from 92 countries

9,291 international visitors

524 exhibitors from 20 countries

Don't miss this opportunity! Join an unparalleled combination of exhibition and educational events.

InnovAction
亚洲门窗遮阳创新中心

IWDS
Int'l Window & Door Summit

SMART
智能家居
2025

materia



R+T ASIA

Leading Asian trade fair for roller shutters, doors/
gates, windows and sun protection systems

20 - 22 March, 2018 | Shanghai New International
Expo Centre (SNIEC) | Shanghai, China

Pre-registration system
available from October 2017.
Get your FREE entrance ticket
and win a trip to R+T Asia 2018!

www.rtasia.org



Deyaar signs strategic MoU with Huawei to deliver smarter properties

Dubai, UAE – Deyaar Development PJSC, one of the UAE's leading property development and real estate services companies, has entered into a strategic partnership with Huawei with the signing of a Memorandum of Understanding (MoU). The new partnership will provide residents of Deyaar properties with cutting edge technology solutions, including smart home applications and state of the art network facilities.

The five-year MoU signed between Deyaar and Huawei will cover several elements, including the introduction of state of the art networks and Voice over Internet Protocol (VoIP) capabilities in numerous properties, including Mont Rose, The Atria, Al Barsha Hotel, and Deyaar's headquarters. Future projects will also be fitted with these solutions.

Huawei will also work with Deyaar to develop technology plans for the Midtown residential project, which will include the next generation of smart homes, communities, and integrated lifestyles. This is not only reflected in the properties Deyaar builds but also applies internally as part of Deyaar's new long term strategic plan to adopt new technologies, in line with UAE Vision 2021 and the growing use of smart technology in Dubai.

An additional aspect of the partnership will see increased security throughout Deyaar properties, with the implementation of Huawei's CCTV Video Cloud solution.



Saeed Al Qatami, CEO, Deyaar and Colin Hu, Managing Director, Huawei Enterprise signing the MoU.
Photo: © Deyaar Development PJSC

ODG appoints Robin Rossi as Senior Interior Designer

Dubai, UAE – ODG, the award winning global retail consultancy agency, has announced the appointment of Robin Rossi as Senior Interior Designer. He will be responsible for bringing innovation, creativity and value-creation to the diverse projects being implemented by the agency within the Middle East and the rest of the world.

"In addition to growing professionally and personally at ODG, which has a significant track-record in delivering ideas the work, I look forward to setting new market trends. I would particularly like to integrate our design approach with the newest technologies to enhance the well-being of residents and visitors across our projects. It is important to continuously push boundaries and today, technology advancements offers a sounding board to look at interiors from a fresh, robust and futuristic perspective."

Rossi has nearly a decade of international experience in interior design, having worked in lead designer roles in his native South Africa. He is credited with several award-winning projects and brings his personal philosophy of not just creating amazing places to live and work in but also to inspire residents and visitors by setting the right emotional context. This is showcased in his design work for the extremely popular Tashas restaurant within Galleria Mall on Al Wasl Road, Dubai prior to joining ODG. Robin has a degree in BA Interior Design from Inscape Design College in Pretoria.



Robin Rossi – Senior Interior Designer at ODG



THE 23RD PHILIPPINE WORLD BUILDING AND CONSTRUCTION EXPOSITION



WORLD BEX

MARCH
14-18
2018
10 AM - 8 PM

WORLD TRADE CENTER METRO MANILA
SMX CONVENTION CENTER

SHAPING INNOVATIONS TOWARD SUSTAINABILITY

CDL emerged as the highest scoring real estate company for its 2017 climate change response

Singapore – City Developments Limited (CDL) is among one of four companies in the Hong Kong and Southeast Asia region to have attained Leadership level for its 2017 climate disclosure with CDP, the non-profit environmental disclosure platform. Thousands of companies submit annual climate disclosures to CDP for independent assessment against its scoring methodology. This achievement recognises CDL's marked progress on positive actions taken to reduce emissions and mitigate climate-related risks in the last reporting year.

CDL's score of A- reflects the company's thorough understanding of the risks and opportunities of climate change, its positive management actions and efforts towards climate change mitigation, and adoption of sustainability best practices and strategies to reduce Greenhouse Gas (GHG) emissions.

Ms Esther An, CDL Chief Sustainability Officer, said, "Sustainability has become mainstream and climate change has significant impacts across many sectors and regions. Businesses should work towards low carbon operations in support of the global climate actions, and play a key role in ensuring transparency around climate-related risks and opportunities."

"Founded on our ethos of 'Conserving as we Construct' since 1995, sustainability has been integrated into CDL's business and operations, and this has served as a strategic differentiator for our brand and products. CDL will continue to enhance our long-established sustainability strategy and best practices around carbon disclosure. Amidst growing global uncertainty and an ever-evolving business landscape, CDL remains poised to leverage our long-standing sustainability commitments to stay dynamic and resilient to deliver lasting value for our business, investors, stakeholders and the environment at large," added Ms An. CDP's climate change scoring methodology is available on CDP's website.

responsAbility and Cleantech Solar join forces to increase momentum of rooftop solar energy adoption in Southeast Asia and India

Singapore – Founded in 2014, Cleantech Solar is a leading pan-Asia solar energy provider to commercial and industrial (C&I) customers with a portfolio of more than 50 MWp and 65 sites in India and Southeast Asia. Cleantech Solar offers solar-as-a-service solutions by financing, installing, operating and maintaining rooftop solar power plants to corporates.

Sustainability has become a key priority for leaders in the corporate sector and onsite solar has become grid-competitive in most countries in the region. These factors further accelerate the transition from conventional to renewable energy. The responsAbility-managed climate fund and Cleantech Solar are joining forces to help pan-Asian companies tackle soaring energy costs and in parallel implement sustainable business practices through the adoption of solar energy.

Cleantech Solar Co-Founder and Executive Chairman Raju Shukla underlined: "We are helping corporates attain their goal of being sustainable and responsible leaders and hedge against volatile power prices. This is what makes our rooftop solar systems such a compelling business case. The long-term funding from the fund will enable us to scale up our operation and drive solar electricity adoption in the region."

Speaking on behalf of responsAbility, Sameer Tirkar, Senior Investment Officer – Energy Debt Financing, highlighted: "Distributed solar and especially roof-top solar is one of the key focus areas for our energy financing activities. We believe that Cleantech Solar, with its strong management team, pan-regional presence and strong execution track record is an ideal partner for us to scale up our involvement in the distributed solar space in the region."

ASGC commences work on The Dubai Mall's Mohammed bin Rashid Boulevard expansion

Dubai, UAE – ASGC, one of the leading construction groups in the UAE, has commenced work on the highly-anticipated expansion of The Dubai Mall, a project that will see additional retail space added to the world's most visited shopping and entertainment destination with over 80 million visitors annually.

Following the issuance of initial permits in August 2017, ASGC has started works that will lead to the addition of a new retail area, forming part of the mall's Mohammed bin Rashid Boulevard expansion. The expansion will form an active link to both Mohammed bin Rashid Boulevard and the mall's Fountain Views expansion. To ensure the highest levels of efficiency in the construction process, ASGC has applied state-of-the-art technology solutions to assist in the project's ongoing work. This includes the deployment of sophisticated 3D-laser scanning to allocated utilities throughout the development. ASGC is also using BIM modelling for full coordination of the construction activities.

Bishoy Azmy, CEO of ASGC, said: "The expansion of The Dubai Mall will be another significant landmark in the city's retail landscape. As part of Dubai's progression in becoming a smart, technology-driven metropolis, we have also incorporated several cutting-edge solutions into our business to ensure that the expansion is delivered with the highest standards of quality, creativity and safety to Emaar Malls."

Prudential celebrates its move to a new Workplace designed to hothouse innovation

Singapore – Prudential Singapore's (Prudential) 1,000 employees recently celebrated the opening of their new corporate office, PRU Workplace (Workplayce), that is designed to inspire innovation and build a creative work culture to support the company's future growth.

Celebrating the occasion with Prudential was Guest-of-Honour Deputy Prime Minister and Coordinating Minister for Economic and Social Policies, Mr Tharman Shanmugaratnam.

Mr Wilf Blackburn, Chief Executive Officer of Prudential Singapore, said the new Singapore office marks an important milestone in the company's ongoing journey to become even more agile and customer-focused.

"As part of our digital roadmap, we've planted the seeds of innovation across Prudential and have nurtured its growth with significant investments in technology and people. We want to groom a future-ready workforce that is able to help our customers meet their life goals and make insurance simpler and more accessible," said Mr Blackburn.

Prudential's Workplace is the first of its kind in the local insurance industry. Inspired by Albert Einstein's philosophy that play is the highest form of research, it integrates work and play at the office. Workplace engages employees with activity-based working options and areas for experimentation and exploration of ideas. It also includes social spaces for greater collaboration and connection among colleagues as well as nature-inspired nooks and rest-pods for employees to recharge. The new Workplace supports Prudential's outcome-based work culture which means employees have the flexibility and autonomy to work from anywhere and at any time.

"Just as we are challenging our people to make a mental shift to a more creative and collaborative culture, our physical workspace and work policies must equally support our journey," said Mr Blackburn. "It is about breaking down the walls of hierarchy, making our Workplace a space that offers an equal voice to all employees and empowering people to undertake greater ownership of their work," he added.



Prudential Singapore's new office launched officially this morning at Marina One. (Left to right): Prudential Corporation Asia Non-Executive Chairman Mr Kai Nargolwala, Prudential Corporation Asia Chief Executive of Insurance Ms Lillian Ng, Deputy Prime Minister and Coordinating Minister for Economic and Social Policies, Mr Tharman Shanmugaratnam, Group Chief Executive of Prudential plc Mr Mike Wells, Prudential Corporation Asia Chief Executive Mr Nic Nicandrou, and Chief Executive Officer of Prudential Assurance Company Singapore Mr Wilf Blackburn. Photo: © Prudential Singapore

Hong Kong Green Building Council's response to The Chief Executive's 2017 Policy Address

Hong Kong – The Hong Kong Green Building Council (HKGBC) welcomes the Government's initiatives on liveable and smart city, climate change and green finance as proposed in The Chief Executive's 2017 Policy Address released recently. The HKGBC will continue its close collaboration with the Government and all the stakeholders to further the commitment for a greener and more sustainable built environment.

Smart City

The HKGBC expects a holistic framework of developing smart city after launching the Steering Committee on Innovation and Technology and the Chief Executive's Council of Advisers on Innovation and Strategic Development, which could effectively address urban challenges,

enhance city management, and improve the quality of living and sustainable practices. Regarding the development of green and intelligent buildings, the Government should encourage building owners to share the system data with the industry, in order to facilitate the building automation and monitoring-based commissioning.

Waste Management

In view of the municipal solid waste charging to be rolled out, the HKGBC has been actively engaging different building users to get ready for the charging through a number of initiatives such as the Hong Kong Green Shop Alliance initiated by the HKGBC and the Construction Industry Council. Over 500 mall operators and shop tenants in the Alliance

take part in activities to understand the new arrangement and implementation of waste management in daily operations. As for the challenges faced by the implementation of the charging in high-rise residential buildings, the HKGBC will be in touch with stakeholders to launch a cross sector-platform to explore the introduction of appropriate designs and facilities into green buildings for a smooth implementation.

Urban Planning and Design

The HKGBC expects more pedestrian-friendly designs to be incorporated during the masterplanning stage of new development areas after the pilot scheme of an innovative measure and comfortable walking environment. We look forward to working with the industry

on the requirements for walkability amidst the high-density sub-tropical urban environment in Hong Kong, in order to create a better pedestrian-friendly environment. It is crucial to enhance the green liveability in development plans. With reference to the current arrangement in Kowloon East, we propose to specify in the lease conditions for private development in new development areas to achieve Gold or above rating under BEAM Plus New Buildings, or certification under BEAM Plus neighbourhood. The Technical Memorandum on Environmental Impact Assessment (EIA) Process should be revamped to incorporate the latest requirements for sustainable development such as the adoption of BEAM Plus in assessing master planning or new buildings.

Green Bond

The HKGBC will partner with local entities which are planning to establish the green bond certification schemes that meet international standards and provide its professional expertise related to sustainable built environment. HKGBC will also consider to include green bond as one of the assessment criteria of BEAM Plus, so as to encourage green bond financing in the industry.

Renewable Energy

In order to promote the development of renewable energy, the HKGBC will collaborate closely with related parties to explore the feasibility of building-integrated photovoltaic systems at a district scale.

Promoting Environmental Performance of Existing Buildings

The HKGBC has the following suggestions regarding the promotion of energy efficiency of buildings to create the sustainable built environment:

- The Government should also assist in enhancing the environmental performance of buildings apart from structural and fire safety. Launched last year, the HKGBC's BEAM Plus Existing Buildings V2.0 emphasises green practices in operation and management. The tool also offers a more flexible assessment method for encouraging wider participation. The HKGBC proposes financial incentives, such as rates concession and tax relief, for building owners who apply for this certification, or schemes similar to "Operation Building Bright 2.0".
- The Government should demonstrate a leading role in adoption of BEAM

Plus, such as exploring the possibility of applying BEAM Plus certification for existing public housing estates and government properties. For leased government office premises, BEAM Plus certified properties should be preferred and a grace period of 5 years, for example, could be given to landlords for attaining certification.

- In view of the challenge to achieve owners' consensus for BEAM Plus certification after properties are sold, the HKGBC proposes the requirement to specify in the lease conditions for private development to include in Deed of Mutual Covenant (DMC) the undertaking for future BEAM Plus Existing Buildings assessment.

Green building is one of the widely recognised solutions to combat climate change and achieve the two-degree target set in the Paris Agreement. In order to achieve Hong Kong's ambitious carbon intensity target of 65 percent to 70 percent by 2030 using 2005 as the base, the Government should formulate a comprehensive Green Building Masterplan, integrating current and new measures to induce or facilitate the generation of more certified green buildings, be it new or existing.

Shanghai Intelligent Building Technology 2017 achieved record-breaking figures and see visitor increase of 18 percent

Shanghai, China – The 11th edition of Shanghai Intelligent Building Technology (Shanghai Intelligent Building Technology – SIBT) ended on a positive note with a record-breaking number of visitors. The fair was held concurrently with Shanghai Smart Home Technology (SSHT) from 5–7 September 2017 at the Shanghai New International Expo Centre. Collectively, the two shows hosted 240 exhibitors from 13 countries and regions, which displayed the latest intelligent building and smart home technologies. The 2017 edition also welcomed a record-breaking 27,275 visitors from 54 countries and regions, an 18 percent increase from last year.

Backed by steadfast support from renowned overseas and domestic companies over the years, the fair is dedicated to presenting innovative solutions. Participating exhibitors included A-OK, ABB, ANJUBAO, Apollo, AVE-Leelen, Baiwei, CARLO, Dnake, DUEMMEGI, EnOcean Alliance, HDL, Honyar, HUTLON, KNX Association, Rishun, RUI XIANG, SAVEKEY, Security & Fire, SenseAir, Supcon, Systec, T-Touching, Taijeisai, WISTAR and ZF Friedrichshafen.

The ever-changing intelligent building market creates an increasing demand for innovative technologies and ideas. This year, SIBT explored future industry trends with a spotlight on Building Internet of Things (BIoT). Influential decision-makers were invited to the fair to share their thoughtful insights on intelligent buildings, connectivity, intelligent hotels, and intelligent building and smart home communication protocols.

For more information, visit www.building.messefrankfurt.com.cn.

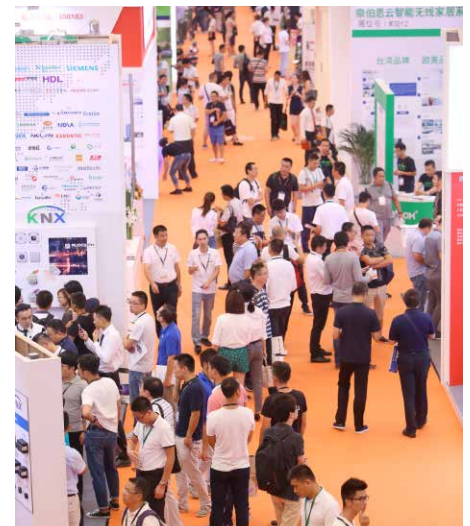


Photo: © Messe Frankfurt (HK) Ltd



THE 18th CHINA XIAMEN INTERNATIONAL STONE FAIR

LEADING THE GLOBAL TRENDS

180,000 m exhibition space
2000+ exhibitors from **56** countries
11 national pavilions
45+ World Stone Congress sessions
150,000+ visitors from **148** countries

Pre-register online for **Free** VIP Service

>>> www.stonefair.org.cn

March 6-9, 2018

Xiamen, China



+86-592-5959616

✉ info@stonefair.org.cn

Xiamen Jinhongxin Exhibition Co., Ltd.

ELASTICOSPA wins an Award at Archmarathon in Miami with the Maison Glacé project

Milano, Italy – There must be a difference in designing a home in Toronto as opposed to Turin: two very culturally different cities, different also in size and morphology. Stefano Pujatti, founder of studio ELASTICOSPA must have asked himself this question often, when he decided to open the second headquarters of his studio in the Canadian metropolis.

The Maison Glacé project – thanks to which the Studio won in the Visioning category of the Archmarathon Awards in Miami – is an important design response to the theme of sustainability, a reflection on how to design by transforming the "problem" into a solution and the peculiarities into instruments characterising the structure.

The theme of energy savings is at the center of architectural works, but is often limited to addressing the question by applying previously validated rules and choosing materials that can easily be controlled. What would happen if you decided to start from another perspective? What if you were to analyse the qualities or the problems of a specific site, and use them to design buildings that can truly be said to belong to that place and no other?

Maison Glacé is an experiment that seeks to connect the building to the territory through what most greatly characterises the latter: the cold. The cold – the ice – is used to protect from the cold. Maison Glacé is a single-family house with guest house annex that will be protected from the sharp cold and freezing winds caused by its proximity to Lake Ontario thanks to a crust of ice that will form in the first cold days, and that will protect the house throughout the winter.

A project that will soon be created, and that aims to become a "Case Study" in the construction of new housing solutions for the indigenous peoples who inhabit those regions of Canada characterised by very cold days throughout the year.

The jury awarded the ELASTICOSPA+KFA project because it proposes an innovative, but at that same time viable solution, and because it takes into account the increasingly drastic and sudden climate changes. A reflection on how to design for the future, using lateral thinking, obtaining energetically sustainable structures.



MVRDV win competition Zhangjiang Future Park, a 100,000 square metres park and culture centre in Shanghai-Pudong

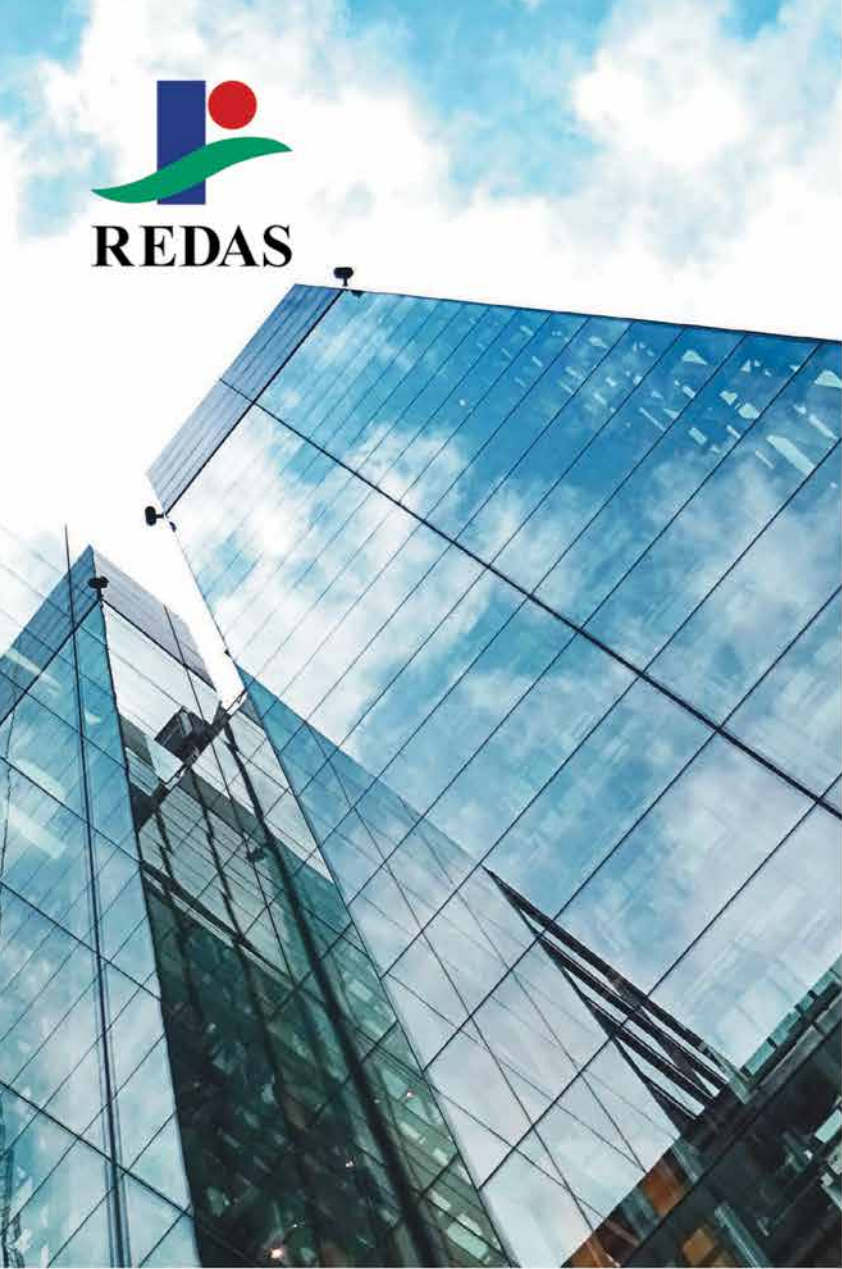
Rotterdam, The Netherlands – Zhangjiang Future Park will become a new focal point for Pudong with communal public facilities combining nature, culture and entertainment with green landscaped buildings and a public park blending into its surrounding. MVRDV's competition-winning design combines 10,000 square metres of public plazas and 37,000 square metres divided over four venues: A library, an art centre, a performance centre and a sports centre. Furthermore a 56,000 square metres public park will be realised.

The design combines public plazas with four distinct venues – a library, an art centre, a performance centre and a sports centre. Located in Pudong, Shanghai, Zhangjiang Future Park is part of a high-technology and innovation district for both national and international companies hosting over 100,000 workers. Aside from being a business and industrial park, the area provides residences for workers and their families who live nearby. MVRDV's competition-winning design combines 10,000 square metres of public plazas and 37,000 square metres of four distinct venues – a library, an art centre, a performance centre and a sports centre. Furthermore,

56,000 square metres of public park will be created which blends in and draws from the natural green surrounding landscapes.

"We wanted to respect the natural green landscape for Zhangjiang Future Park and drew from its island location separated by two rivers," said Nathalie de Vries, co-founder of MVRDV. "The entire complex will provide high quality public space with public and cultural facilities, making it a place for relaxation and excitement for the people who work and live here," added Nathalie de Vries.

The four distinct buildings are at the heart of this development and offer within walking distance an array of cultural and entertainment facilities. They all have activated roofs forming an elevated area connected together with pedestrianised bridges, acting as a second city layer that provides views of the river and neighbourhood and picnic areas. The design proposes a recognisable collection of buildings that emerge seemingly like silhouetted cracks in the landscape and provide different perspectives depending on where one is located on the site. The green roofs programme not only offers a lively and biodiverse park programme integrated into the building's function but they provide



Book your place today:



rics.org/smartbuildings



+65 6812 8188

#RICSASEAN #RICSSG #RICSSmartbuilding



Smart Buildings Conference 2018

Technology integration for sustainability

15 March 2018

Singapore



Book before 19 January 2018 and enjoy 10% discount off the regular rate

Supporting organisations:



Supporting associations:



Knowledge partner:

FROST & SULLIVAN

sustainable benefits including stormwater drainage, cleaner air, noise reduction and energy savings due to thermal insulation. Within walking distance an array of cultural and entertainment facilities are available to all.

MVRDV will work with ISA Architecture, Shanghai (co-architects) and Openfabric, Rotterdam (landscape architects). The competition-winning design was selected by Zhangjiang Group Co. Ltd, one of China's first state-level high-tech zones.

Tezuka Architects wins 2017 MoriYama Raic International \$100,000 (Cad) Prize for Excellence In Architecture

Toronto, Ontario, Canada – The Royal Architectural Institute of Canada (RAIC) has announced Tokyo-based Tezuka Architects' Fuji Kindergarten as the winner of the 2017 MoriYama RAIC International Prize.

The Prize winner was revealed on September 19, 2017, during an awards ceremony and gala at the historic Carlu in Toronto, attended by about 250 members of the Canadian and international architecture community.

"I feel now there is someone who understands this project well. I think it's quite a unique prize because it's about contributing to society," commented the 2017 MoriYama RAIC International Prize winner, Takaharu Tezuka of Tezuka Architects. "It looks like a simple structure. But it's a layering of many ideas combined."

Tezuka Architects' Fuji Kindergarten in Tokyo, Japan, was selected by the seven-member jury following site visits to each of the four shortlisted projects. In addition to the Fuji Kindergarten, the finalists include 8 House in Copenhagen, Denmark, by Bjarke Ingels Group; the Melbourne School of Design in Melbourne, Australia, by John Wardle Architects and NADAAA; and the Shobac Campus in Nova Scotia, Canada, by MacKay-Lyons Sweetapple Architects. The Prize received submissions from 17 countries across six continents.

"It is a pleasure to congratulate the winner of the second MoriYama RAIC International Prize and to recognise their devotion to architecture that imagines new possibilities for people," said Raymond MoriYama, CC, O.Ont., FRAIC.

Located in Tokyo, Japan, since 2007, the Fuji Kindergarten is a one-storey, oval-shaped kindergarten that can accommodate over 600 children running freely around its open-air roof. The building is designed to support the Montessori education method, which encourages independence, and for a climate that allows the children to be outdoors much of the year. The elliptical building, which houses classrooms, offices, and support spaces, surrounds an open playground that serves as the visual, functional, and spiritual focus of the school. The place for play is augmented by an elliptical upper deck that overlooks the playground and forms the roof of the school building. The rooftop itself becomes the play equipment for the children, some of whom run up to six kilometres a day.



Photo: © Katsuhisa Kida

Adelaide Contemporary Design Competition draws global response

London, UK – Competition organisers Malcolm Reading Consultants revealed that the Adelaide Contemporary International Design Competition has attracted 107 teams made up of circa 525 individual firms from five continents.

The global call for interest was designed to encourage Australian as well as leading international practices – a condition of the competition is partnership with an Australian practice at stage two. The majority of applicants, over a third, are led by Australian practices. Of the rest, over a fifth of entrants came from North America; just under a quarter from mainland Europe; a tenth from Asia (with a strong showing by Japan); and less than a tenth from the United Kingdom. Architects from as far away as Afghanistan, Iran, Scandinavia and China applied to be considered.

From these initial submissions a shortlist of up to six teams will now be selected by a panel chaired by jury chair Michael Lynch AO CBE. The finalists, who were announced in mid-December 2017, will then go on to create concept designs.

A new landmark on Adelaide's celebrated North Terrace boulevard, Adelaide Contemporary will combine a contemporary art gallery with a public sculpture park and meeting place. The initiative will be a focus for the city's cultural energies and create an accessible community meeting place, integrating art, education, nature and people.

Adelaide Contemporary's world-first Gallery of Time will draw from the State's collection to place Aboriginal art and culture in conversation with work from European and Asian cultures.



28 YEARS OF ENERGY EXCELLENCE... ASEAN SUSTAINABLE ENERGY WEEK 2018

- Regional Leader in Delivering the Future of ASEAN Energy Transition Solutions

Thailand's non hydro-power renewables industry has grown rapidly over the last five years, driven by the government's implementation of a supportive environment for renewables which includes a feed-in-tariff, bidding programs for renewable capacity and tax incentives. The rationale behind the creation of this favorable investment for renewables is the government's desire to diversify the country's power mix.

This exciting energy prospect will make **RENEWABLE ENERGY ASIA – ASEAN'S 14th largest and most comprehensive Renewable Energy Technology Exhibition and Conference in the region** – a must exhibit event. The show will present many unique and outstanding opportunities for companies in renewable energy to showcase their latest technology and products to buyers across the Asian region.

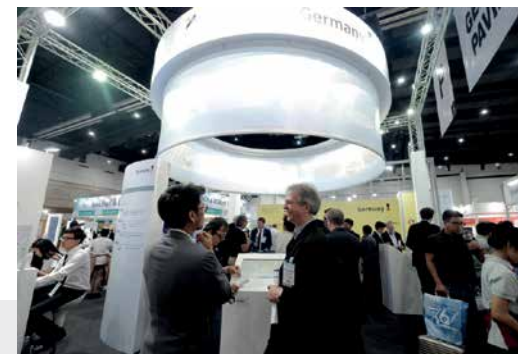
"ASEAN Sustainable Energy Week 2018 will feature the latest innovative energy sources along with cutting-edge machinery and equipment that enhances overall business competitiveness and performance. It includes solar generating panels, wind technology, biomass, biogas, waste-to-energy, energy storage, energy management, lighting, data-centers, air pollution control, solid & waste-water treatment, water purification, smart grid, EV charging equipment, energy traction, motor & drive system components and more."

ASEAN Sustainable Energy Week 2018 features...

- **Mega Show Exhibit** – over 1,500 major brands from 35 countries
- **Large Pavilions** – Major National Pavilions from China, Germany, Japan, Korea, Netherland, Singapore, Switzerland, Taiwan, and USA.
- **Quality Visitors** – Attended by more than 27,000 Trade visitors from 45 countries.
- **Regional International Conferences:**
 - REA Conference 2018 – International Renewable Energy Asia Conference #14 on "The Future of ASEAN'S Energy Journey E-mobility – Smart Grid – Smart City" covering topics such as smart-cities and how technology contributes to advancing the future of ASEAN Energy
 - IEVTEC 2018 – International Electric Vehicle Technology Conference #3 – Attended by EV researchers and policy-makers who will share their collective know-how to move forward in the industry.
 - EPPO ASEAN Energy Forum 2018 hosted by the Energy Policy and Planning Office. Attended by ASEAN policy-makers who will focus on government energy policies and related business.
 - Knowledge Enhancement – 80 special Seminars & Workshops related to Environmental technology, Water & Wastewater and featuring the latest Boiler technology.

Renewable Energy Asia 2018 is a part of the ASEAN Sustainable Energy Week (ASE) 2018, ASEAN's Largest and Most Comprehensive International Exhibition & Conference on Renewable Energy, Energy Efficiency, Electric Vehicle and Environmental Technology. The show is a significant benefit to exhibitors in terms of expanding business and visitor profiles in all relevant areas.

For immediate booking please visit: www.asew-expo.com or contact: asew-th@ubm.com



**MAKE SURE YOU
DON'T MISS
OUT ON THIS
SPECIAL BUSINESS
OPPORTUNITY.
BOOK YOUR
SPACE NOW!**

At stage two shortlisted teams will need to include an Australian registered architect; the teams will receive an honorarium of AU\$90,000 for their competition work including their concept design. The competition brief embraces South Australia's Industry Participation Policy, to ensure that maximum economic activity is generated locally from project conception through to delivery; and to provide new opportunities for local producers, entrepreneurs and businesses.

The competition will inform the finalisation of a business case and funding approval by the Government of South Australia following the brief development phase.

Adelaide is located on the traditional lands of the Kurna people and the project site – part of the former Royal Adelaide Hospital site – and its surroundings are rich in Kurna heritage.

The former Royal Adelaide Hospital site, close to the historic

Adelaide Botanic Garden and to the acclaimed Art Gallery of South Australia, will undergo a transformation into an innovative, mixed-use contemporary urban quarter, led by Renewal SA, the Government of South Australia's regeneration agency. Adelaide Contemporary is a key element in the emerging vision.

The shortlist and competition jury will be announced next month and a public exhibition of the shortlisted teams' concept designs will be held in Adelaide prior to the jury meeting in May 2018. The designs will also be available to view on the competition website. The public will be able to give feedback, and stakeholders will be invited by Arts South Australia to provide their response. The winner announcement is anticipated to be in early to mid-June 2018.

For further updates please visit the competition website at <https://competitions.malcolmreading.co.uk/adelaidecontemporary/news>

Adjaye Associates and Ron Arad Architects win UK Holocaust Memorial international design competition

London, UK – Adjaye Associates, Ron Arad Architects and the landscape architects Gustafson Porter + Bowman have been selected to design the UK's new Holocaust Memorial and Learning Centre.

After an international competition, with 92 entries in total and 10 finalists, Adjaye Associates, Ron Arad Architects and Gustafson Porter + Bowman were selected unanimously as the winning team, by a Jury including the Secretary of State for Communities and Local Government, the Mayor of London, the Chief Rabbi, experts from architecture, art and design, and both first and second generation Holocaust survivors.

The design team will be led by British architect Sir David Adjaye, who is known for creating sensitive yet compelling designs. His recent work includes the National Museum of African American History and Culture in Washington D.C. and the Idea Stores in London's Tower Hamlets.

Located next to the Houses of Parliament in Westminster,



Front view of the new Holocaust Memorial and Learning Centre. Photo: © Adjaye Associates and Ron Arad Architects

the new UK Holocaust Memorial will honour the six million Jewish men, women and children who were murdered in the Holocaust, and all other victims of Nazi persecution, including Roma, gay and disabled people. Its co-located Learning Centre will contextualise the Memorial above and use the stories and facts of the Holocaust to explore anti-Semitism, extremism, Islamophobia, racism, homophobia and other forms of hatred and prejudice in society today. From its location

next to Parliament, it will ask questions about the role of society and its institutions in encouraging respect for others and preventing hatred.

The Jury praised the winning team's proposal to create "a living place, not just a monument to something of the past" and the desire to create an immersive journey for the visitor who would enter a Memorial embedded in the land. The Jury found the proposal deftly resolved an essential challenge of the brief: being

visually arresting ("highly visible from near and far") yet showing sensitivity to its location and context.

The concept was found to have clear potential to be developed into an iconic Memorial and intriguing educational experience, attracting visitors from the UK and beyond to learn and reflect.

The winning concept is at an early design stage. It will now undergo further development through discussion with Holocaust experts, survivors and other victim groups, and local residents, Westminster City Council, Historic England, Royal Parks and other statutory consultees. As part of this process, the United Kingdom Holocaust Memorial Foundation will also work closely with other organisations and experts on the contents and approach of the co-located Learning Centre.

The Jury also awarded honourable mentions to two teams – Heneghan Peng architects and Sven Anderson, and Diamond Schmitt Architects.

The competition was managed by Malcolm Reading Consultants.

guangzhou electrical building technology

Asia's premier platform for the
electrical engineering, intelligent building
and smart home markets

9 – 12 June 2018

China Import and Export Fair Complex
Guangzhou, China

www.building.messefrankfurt.com.cn

Contact

Messe Frankfurt (HK) Ltd

Tel: +852 2238 9961

Fax: +852 2519 6079

building@china.messefrankfurt.com



Official website



光亞 · Guang ya



messe frankfurt



6-9 Mar 2018 | *Xiamen, China*

Xiamen Stone Fair 2018

Xiamen International Conference & Exhibition Center. T: +86 592 595 9616 F: +86 592 595 9611
E: info@stonefair.org.cn W: www.stonefair.org.cn

14-18 Mar 2018 | *Manila, Philippines*

WORLDBEX 2018

World Trade Center Metro Manila, SMX Convention Center, WTCMM East Wings A & B, WTCMM West Wing.
T: +63 2 656 9239 E: info.worldbex@gmail.com W: www.worldbex.com

15-18 Mar 2018 | *Jakarta, Indonesia*

MegaBuild Indonesia 2018

Jakarta Convention Center. T: +62 21 2556 5000 F: +62 21 2556 5040
E: eric.antonius@reedpanorama.com W: www.megabuild.co.id

15 Mar 2018 | *Singapore*

REDAS – RICS Joint Conference Smart Buildings Conference 2018

Technology Integration for Sustainability. T: +65 6812 8188 F: +65 6221 9269
E: ricssingapore@rics.org W: www.rics.org/smartbuildings

20-22 Mar 2018 | *Shanghai, China*

R+T Asia 2018

Shanghai's New International Expo Centre (SNIEC). T: +86 21 61956088 F: +86 21 61956099
E: rtasia@vnuexhibitions.com.cn W: http://rtasia.org

25-27 Apr 2018 | *Taipei, Taiwan*

SMAhome Conference & Exhibition 2018

Taipei Nangang Exhibition Center, Nangang District. T: +886 2 8729 1099 ext. 768
E: michelle.chu@newera.messefrankfurt.com

10-12 May 2018 | *Bangkok, Thailand*

LED Expo Thailand

IMPACT Exhibition & Convention Center. Tel: +66 2 833 5328 Fax: +66 2 833 5127 to 9
E: panvisutb@impact.co.th W: www.ledexpo thailand.com or http://smahome.tw.messefrankfurt.com

6-9 June 2018 | *Bangkok, Thailand*

ASEAN Sustainable Energy Week

Bangkok, Thailand, BITEC. T: +66 2 036 0500 F: +66 2 036 0588 E: asew-th@ubm.com W: www.renewableenergy-asia.com

9-12 June 2018 | *Guangzhou, China*

Guangzhou Electrical Building Technology 2018

China Import and Export Fair Complex. T: +852 2802 7728 F: +852 2598 8771 E: info@hongkong.messefrankfurt.com
W: http://guangzhou-electrical-building-technology.hk.messefrankfurt.com

Virtual Reality and the Construction Industry

With the continued development of revolutionary technology, Virtual Reality has been implanted in some unprecedented ways. Victaulic's David Molnar, VDC/Special Projects Manager in the Construction Piping Services department (pictured), speaks about the current BIM trends and the application of Virtual Reality and Augmented Reality in commercial air conditioning projects.

Q: How can augmented reality benefit the construction sector? How does it make for a smarter safer and more efficient job site?

A: The use of augmented reality is becoming increasingly popular within the HVAC sector, in particular, resulting in significant benefits as contractors and engineers can now create a virtual representation of a piping system within a physical building or project. This allows construction and development teams to truly see and understand how the mechanical room will fit together technically, thus allowing any errors throughout the design process to be identified and resolved with ease. Building maintenance post construction has also benefited from augmented reality as contractors can take a screenshot of a room and load the exact components into a model.

Victaulic has identified that software is enhancing BIM processes allowing for a smarter, safer and more efficient jobsites. Victaulic anticipates software will continue to advance, allowing engineers and

contractors to utilise their BIM construction processes more efficiently. As showcased at Autodesk University 2016 (AU2016), companies are introducing software that enables BIM workflows within Autodesk Revit. Software like Revizto and BIM 360 Docs have the ability to change the way contractors and engineers understand BIM. Revit models can now be transformed into 3D environments allowing project teams to truly interact with their preconstruction models. This, coupled with the ability to access documents from any location and digitally assign workflows, allows project teams to work cohesively and eliminates the time consuming coordination meetings that we have become accustomed to.

Q: How does BIM benefit the construction process? How do engineers, consultants and construction managers take advantage of BIM?

A: Over the past five or more years, contractors and engineers have been migrating from CADmep to Revit. This has streamlined processes and simplified the

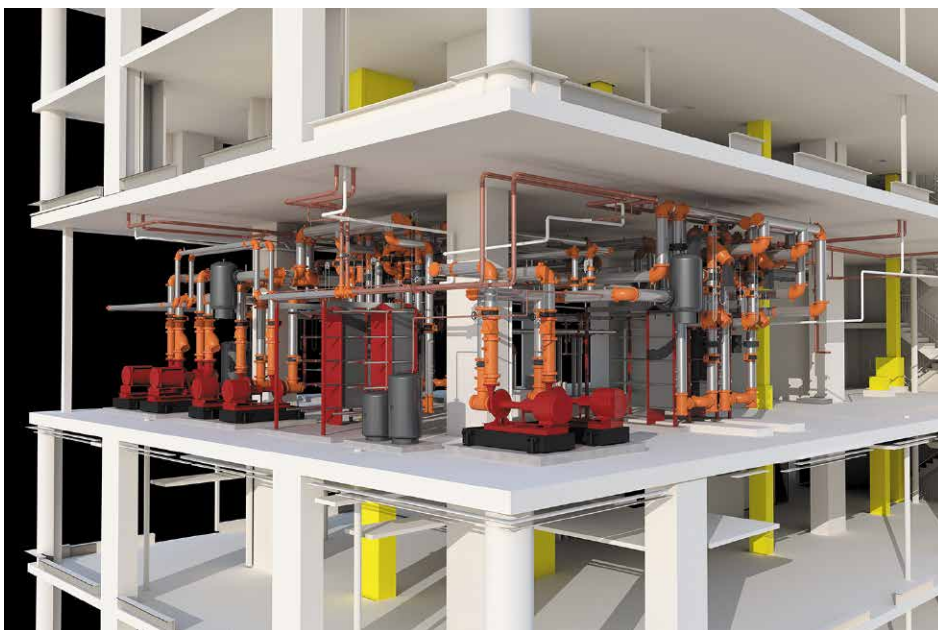


model to one single point of truth. An entire project, including all floors and trades, is available for view in one single model. With the advancements in add-in technology for Revit, it is clear that routing will become increasingly more efficient in 2017. Yet what is equally as important is the ability for everyone to access a model both from inside an office, and remotely from a jobsite.

In 2017, this ability to access the model from any location around the world will improve connectivity and workflows for the entire project team. Victaulic believes that collaborative cloud-based tools such as Collaboration for Revit (C4R) and Autodesk A360 will continue to change the technology landscape in 2017. With all of the project documents now residing in the cloud, everyone involved in a project can access one single model, from any location, and updates can be viewed in real time. This eliminates the need for collaboration tools which were previously required to pull different models together and locate issues and clashes.

Q: Can you give an example of how this technology enhanced the performance of project?

A: Victaulic was approached to be involved in The St. John of God Berwick Hospital in Victoria, Australia, in development for the entire mechanical room and piping fit-out due to their products reputation as time savers with VTFR. In 2016, the project team switched to Revit and reached out to Victaulic for advice on how to use this technology in piping design. Victaulic helped the project by improving efficiency



in the modelling and design phase as prior to the VTFR, they were still using CADmep and transitioning to Revit. VTFR provided a bridge to fab and bills of materials with Revit.

As more engineers/consultants and construction managers understand the efficiency of BIM, they are taking advantage of BIM throughout the whole construction process. Industry is gradually embracing the technology and we are sure to be seeing more collaborations similar to the work we did with St. John of God Berwick Hospital.

Q: How will software change the way the construction sector operates?

A: VR is extremely beneficial to the contracting community. When the drawing team can look at a plan and immediately detect what would be a costly error in the field, the technology speaks for itself. Historically, contractors used computer models to visualise the jobsite. Though they could look at the jobsite in a 3D view, it was still a flat model. Now, a contractor can truly walk his project as if he were onsite. Victaulic is working to stay ahead

of the technology trends. With an internal drawing team of over 70 people, Victaulic is utilising virtual reality glasses and augmented reality to help our internal teams, and our customers, see projects come to life. Victaulic is also committed to creating high quality, industry-leading content that gives our customers the ability to route and view their models in a virtual environment.

We have always been committed to staying at the front line of innovation. Our customers see this each year at AHR when we showcase our new products, and in 2017, we are showcasing virtual reality technology as well. We view the use of this technology as yet another way to allow our customers to become more efficient than ever before. The use of Victaulic products allows contractors to complete projects faster than they could with traditional methods.

Q: Can you elaborate on Advanced Visual Technologies for MEP Pipe Routing?

A: In 2017, more contractors and engineers should start leveraging augmented reality devices to drive fundamental shifts in

their traditional construction methods. Advanced visual technologies, like 3D glasses, are being used to visualise the jobsite in new ways. Contractors now have the ability to immerse themselves in a project throughout preconstruction to virtually walk a jobsite and see clashes, issues and changes. Augmented reality, like the HoloLens technology, is like looking through a window at the world – only that window superimposes objects in your line of site – so a project manager can look at a ceiling using glasses or an iPad, and see where an HVAC system will be or should be installed. Victaulic is looking to drive these efficiency gains forward in the preconstruction process and to give customers the ability to route faster. This technology also provides the tools necessary to fully visualise a model and see clashes that may have caused unforeseen issues in the field. By identifying these issues upfront, contractors can eliminate the risk of onsite issues that are costly and time-consuming to fix in the field.

Visit Victaulic's organisational listing on www.tradecardsglobal.com



• S O U T H E A S T • A S I A •
CONSTRUCTION

Southeast Asia Construction (SEAC) is a regional trade magazine published in Singapore and distributed to a qualified readership in Asia and all over the world. The magazine features the engineering aspects of civil and structural projects worldwide. It also covers the latest on construction equipment, materials, technology, management and industry news as well as major construction machinery trade shows at regional and international levels.









TRADE LINK MEDIA PTE LTD

101 Lorong 23 Geylang #06-04 Prosper House Singapore 388399 Tel: (65) 6842 2580 Fax: (65) 6745 9517 info@tradelinkmedia.com.sg | www.tradelinkmedia.biz



Scan to visit our website

Virtual Design Center – dormakaba's new virtual headquarters

You find yourself 2,246 metres high in the Italian Alps, looking out across the valley to the beautiful turquoise Lake Avino and its dam. A fragile, glass-encased steel structure protrudes boldly from the dam wall, hanging above the abyss – just like something out of a James Bond movie. The blue-red dormakaba logo can be seen on the side of the structure, with the following inviting white words beneath it: Virtual Design Center. As your gaze sweeps across the mountains and valleys, you enjoy the breathtaking view – until you are suddenly lifted up into the air and quickly land on the building's glass roof. After entering with your key card, you now find yourself inside the building.

No matter where you are in the world – the journey to dormakaba's Virtual Design Center only takes 80 seconds.

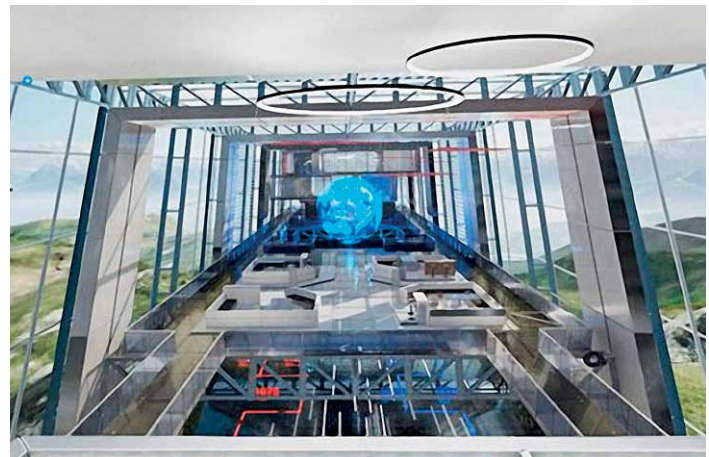
A brand experience in the Italian Alps

A virtual building in a virtual place – in the heart of the Italian Alps: using a virtual reality (VR) headset, headphones and controller, visitors can easily explore the inside of this virtual company headquarters. As they make their way around, a narrator tells them about the history, values and mission of dormakaba. "Visitors can get to know Dormakaba up close here," explains Uwe Eisele, responsible for Marketing at dormakaba in Germany. "After the merger of Dorma and Kaba, we wanted the Virtual Design Center to provide an emotional brand experience that is different from traditional corporate brochures: with VR, the new brand can be experienced with nearly all the senses."



3D meetings in the Virtual Design Center

In future, these virtual company headquarters in the mountains will be buzzing with activity. "We want to create virtual showrooms where we can welcome customers and architects," continues Eisele. "Our staff will guide them through showrooms that have been configured in line with their wishes, where they can try out our products and experience them." The concept for these 3D meetings is based on multiplayer video games: participants log in with their



Inside the Virtual Design Center, visitors will soon be able to touch and try dormakaba solutions – and of course, enjoy the breathtaking Alpine scenery.



The city comprises an airport, an industrial complex, and private residences – all featuring standard dormakaba products.

The 360° City app gives employees, partners and customers constant access to the product portfolio.

own avatar and meet one another in the Virtual Design Center. As an avatar, each individual is free to explore the showroom independently. The moderators – dormakaba staff – can guide the avatars and draw their attention to specific things, for example, to demonstrate a product's special features. "What's more, we are planning a virtual office for our staff where they can come together with colleagues from around the world."

A virtual city full of products

Current visitors to the Virtual Design Center can see a virtual city, which will soon make way for the showrooms. The city comprises an airport, an industrial complex, and private residences – all featuring standard dormakaba products, allowing participants to see the products in use. The city's infrastructure is based on dormakaba's 360° City app. "For two years now, the app has been helping staff and partners sell products from dormakaba's comprehensive portfolio," says Eisele. The 3D experience is

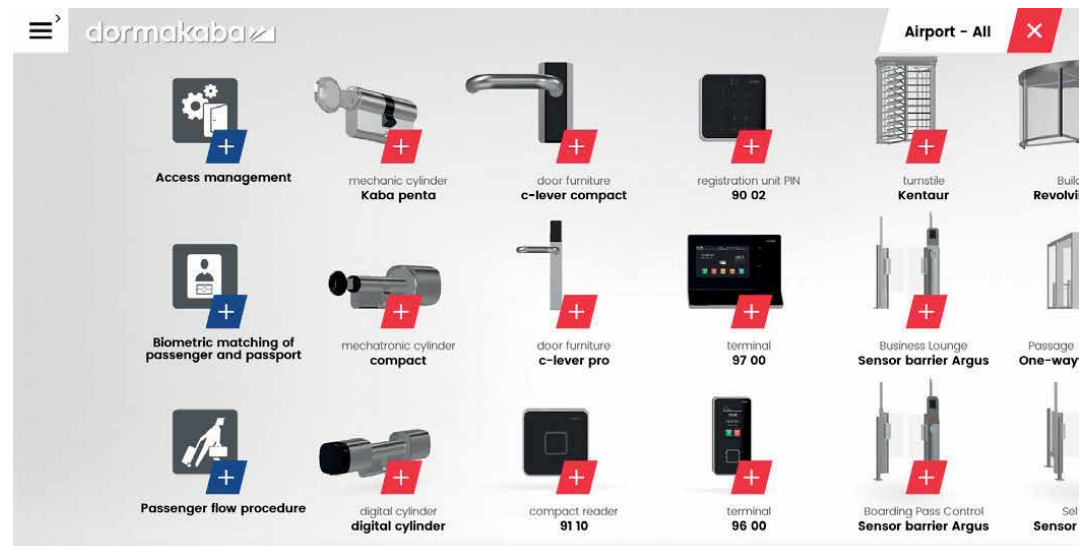
enhanced with short films, images and data sheets – giving employees, partners and customers constant access to the entire product portfolio. The app is also attractively designed, having picked up a Red Dot Design Award.

Inside view of a mechanical locking cylinder

The 360° City app can be downloaded for free from the Apple App Store or Google Play

Store. Once installed, it can be used on smartphones or tablets in either 2D or 3D mode. Users can decide whether they want to take a pre-defined route through the city and see dormakaba products in use, or explore the products in detail using the product browser and individually configure them. In the app's VR mode, users have the opportunity to fully explore the city and see the inner workings of some products.

"With the help of a special bracket made from cardboard, your own smartphone can be transformed into a VR headset in next to no time," explains Eisele. "This means customers can see the inner workings of a mechanical locking cylinder and experience how it works." Further experiences are set to be added to the 360° City app in future, including hospitals, hotels, universities, and other public buildings.



The app's product browser allows all products to be explored in detail.

Post-earthquake prototype house is crowned World Building of The Year 2017

The Post-earthquake reconstruction/demonstration project of Guangming Village was declared the **World Building of the Year 2017** this evening at the 10th annual World Architecture Festival, held in Berlin. The scheme was designed by The Chinese University of Hong Kong.

Following the Ludian earthquake in 2014, most of the local buildings in Guangming were destroyed. This project reinvented the traditional building technology, providing villagers with a safe, economical, comfortable, and sustainable reconstruction strategy that they could afford, own, and pass on to their children. A prototype house was built for an aged couple to validate the technology and building performance of the new system.

The judges believed this to be an extraordinary project in terms of the scope of ambition, exemplified in the addressing of profound problems facing ordinary people. They applauded the re-use of traditional material and construction methods but with the addition of new technology – combining ancient wisdom with modern know-how.



Photo: © World Architecture Festival



Photo: © World Architecture Festival

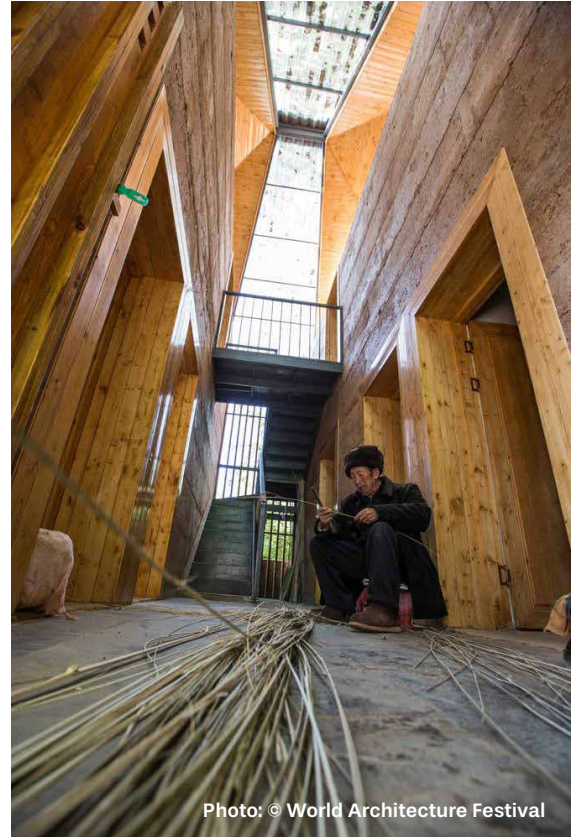


Photo: © World Architecture Festival

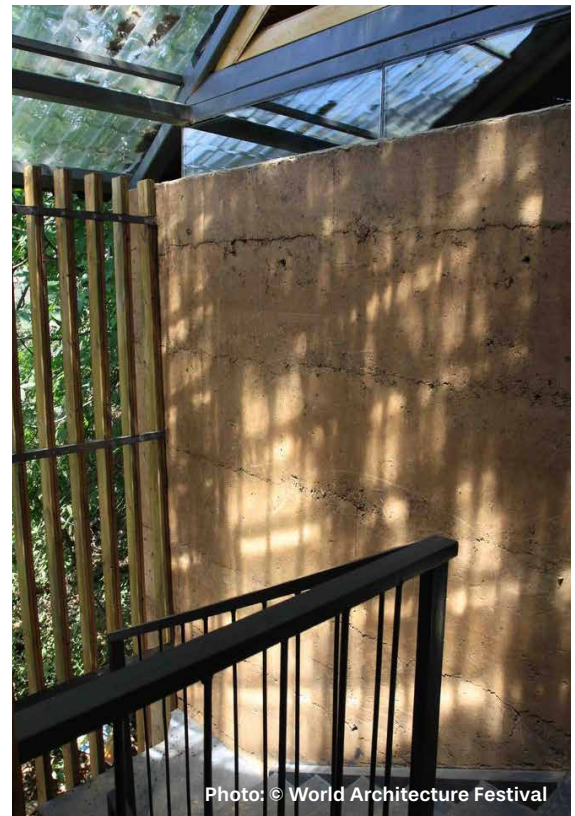
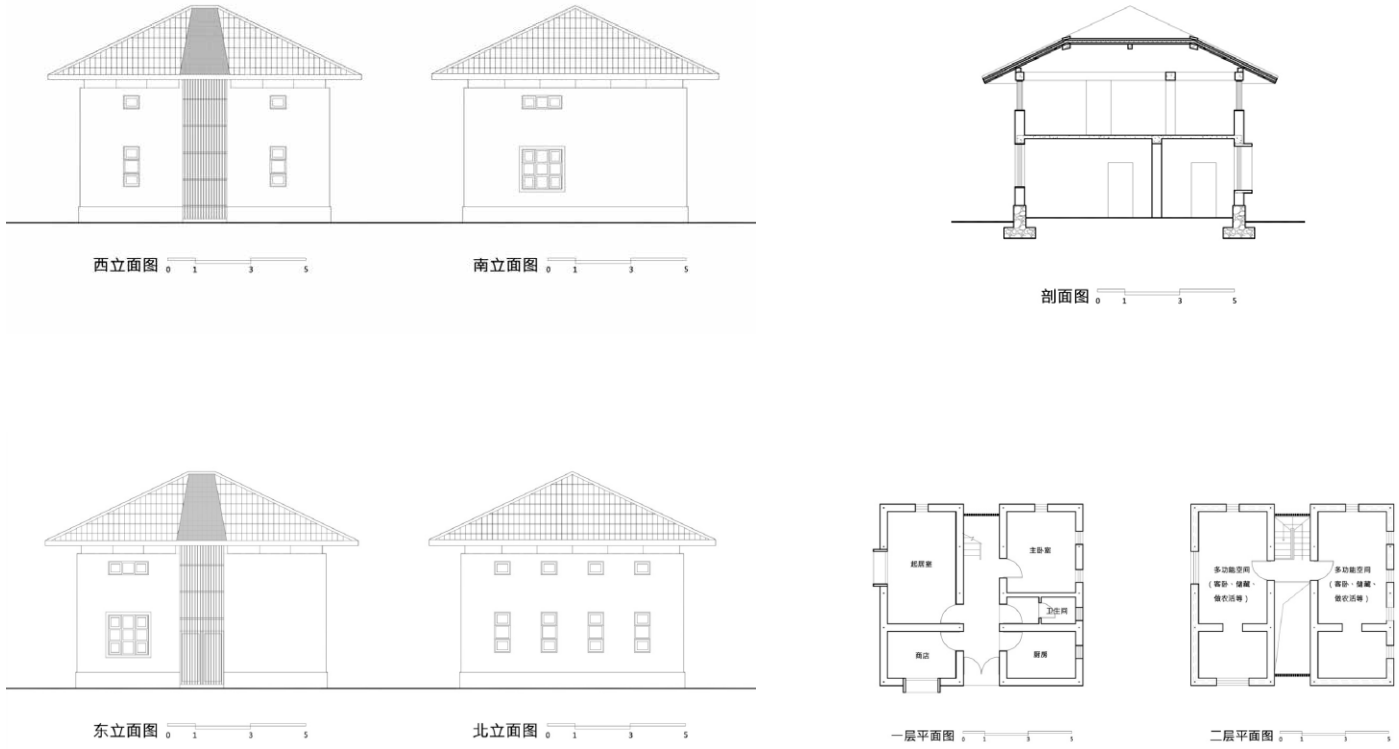


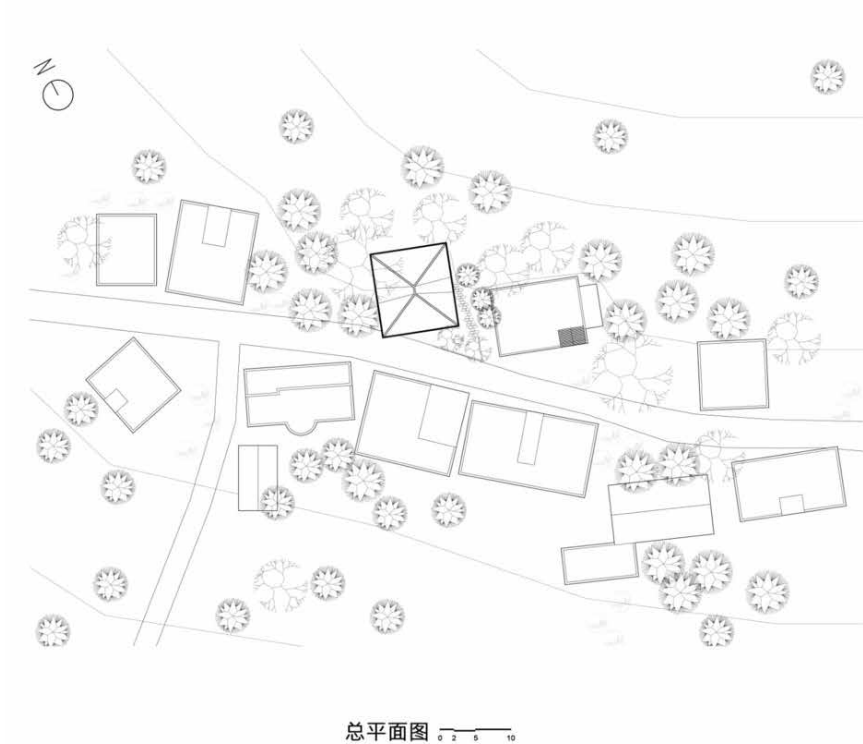
Photo: © World Architecture Festival

The Post-earthquake reconstruction/demonstration project of Guangming Village was declared the World Building of the Year 2017.



The judges were also impressed by the iterative research process which could be re-applied to anywhere in the world affected by seismic problems and low levels of wealth. "The architects succeeded in translating 'four walls and a roof' into something which, through architectural commitment, becomes a project that is much more profound," commented WAF Programme Director Paul Finch. "This building is a demonstration that architecture is just as relevant in the poorest of communities as it is in the richest," added Mr Finch.

The winner was selected by a super jury of five luminaries of the global architecture industry – comprising Christoph Ingenhoven (Principal, Ingenhoven Architects), Ian Ritchie (Founder, Ian Ritchie Architects), James Timberlake (Principal, Kieran Timberlake), Ellen van Loon (Partner, OMA) and Mun Summ Wong (Founder, WOHA).



All drawings: © World Architecture Festival

Due to the high standard of category winners presented in the first two days of WAF, the super jury decided to confer a Director's Special Award to **Superlofts Houthaven** in Amsterdam by Dutch practice **Marc Koehler Architects**. A new co-housing concept that aims to create a global network of local building co-operatives, judges said the concept is "a game changer – a replicable and transferable model which could extend in terms of scale."

The World Building of the Year and a host of other top awards were presented at a glamorous gala dinner for over 800 international architects at The Postbahnhof – Wilhelm Tuckermann's Gothic masterpiece which is located in the heart of Berlin.

The **Post-earthquake reconstruction/demonstration project of Guangming Village** is now the 10th project to claim the illustrious title of World Building of the Year, since its inception at the inaugural World Architecture Festival in Barcelona in 2008. Following four years in Singapore, this is the festival's second year in Berlin, where over 2,000 architects from across the globe have convened for three days of debate and discussion.



Marc Koehler Architects' Superlofts Houthaven. Photo: © World Architecture Festival



Allen Jack+Cottier Architects' Sydney Fish Markets. Photo: © World Architecture Festival

The **Future Project of the Year 2017**, which celebrates the best of the world's architecture that is yet to be completed, is the **Sydney Fish Markets** project by **Allen Jack+Cottier and NH Architects**. WAF's Future Project super jury, comprising Mark Dytham (Principal, Klein Dytham Architecture), Isay Weinfeld (Founder, IW. Arquitectura) and Monica von Schmalensee (CEO, White Arkitekter) selected the project for "the great transformation it offers to the area" commending it for its vision beyond the brief." Its success stems from the engagement and collaboration with politicians, developers and land owners." The Sydney Fish Market won as the project transforms a world bigger than itself. The architects executed their role in an exemplary and inspiring fashion.

Landscape of the Year 2017 was awarded to **Peasants and their Land: The Recovered Archaeological Landscape of Chengtoushan, Lixian County, China** by **Turenscape**. The judges felt that this project reflected a hopeful and creative mixture of archaeological history, rice production and tourism.



Peasants and their Land: The Recovered Archaeological Landscape of Chengtoushan, Lixian County, China by Turenscape. Photo: © World Architecture Festival



Eriksson Furunes + Leandro V. Locsin Partners + Jago Boase for Streetlight Tagpuro. Photo: © World Architecture Festival



Fitzroy Crossing Renal Hostel by Iredale Pedersen Hook Architects. Photo: © World Architecture Festival

The landscape project is based around a live 6,500 year-old archaeological site which has been protected by the local government of this rural province. The judges were impressed with the "productive engagement between visitors and farmers who are able to maintain their traditional livelihoods".

The **Small Project of the Year** was awarded to **Eriksson Furunes + Leandro V. Locsin Partners + Jago Boase for Streetlight Tagpuro** – "a genuine good news story, whereby a community engagement process led to an authentic and high quality result." The project involved the relocation of NGO Streetlight's office, orphanage and study centre in the wake of super-typhoon Haiyan. **The Best Use of Colour Prize**, supported by Eastman, was scooped up by **Iredale Pedersen Hook Architects** for the **Fitzroy Crossing Renal Hostel** in Australia, a project where judges found the use of colour to be "sensitive, elegant and well balanced." The building provides a long term accommodation facility for Aboriginal people from outlying communities receiving renal dialysis. The aim of the centre is to humanely support the needs of the residents, who may be self sufficient and independent, or may have a carer living with them. The architecture facilitates a safe environment to wander and gather with occupants, family, friends and the community. Light is filtered through the coloured screens that run along the side of the structure. Judges praised the practice for "a design that uses holistically integrated colour relative to the landscape and the local community. As the project's main function is healing, the use of colour creates an emotional context that is deeply supportive and nurturing."

The annual display of shortlisted entries from the **Architectural Photographer of the Year Award**, now in its fifth year, was a highlight of the Festival Hall stands, with delegates voting for their favourite image over the course of the Festival. This year, the prize was won by Terrence Zhang for his striking image of the Swimming Pool at the New Campus of Tianjin University in China, which was designed by architects Atelier Li Xinggong. Terrence Zhang's photograph captures shafts of sunlight entering above the swimming pool and playing on the water. The image is framed beautifully by the curved ceiling arches of the structure's roof. The prize is supported by Sto, and following the festival, all shortlisted entries will be exhibited at Sto Werkstatt in London, as well as being exhibited at a gallery in Beijing.

The prestigious £10,000 prize for the **Architectural Review Emerging Architecture Award 2017** went to Paris-based practice Avenier Cornejo Architects for their 17th Arrondissement social housing project, Rue Bonet. The Emerging Architecture Award celebrates the most talented architects under the age of 45, granting early recognition to young designers. The Rue Bonet project comprises 38 apartments in a urban plot of just 430 square metres. Judges commended the project for its realisation of social housing in a challenging urban environment and the ambition to tackle important and pertinent social issues.

This year WAF has given a unique recognition to the best completed building by an Iranian practice from the last three years. The **Iran Special Prize** was won by **New Wave Architecture** for the **Pars Hospital** in Tehran, which topped a shortlist of eight Iranian projects. Completed in 2016, the hospital was praised by judges as "a design that understands and confidently solves the puzzle of a large hospital and reaches a resolution of public spaces, links and views that makes a delightfully coloured and light place of repair and recovery."



Pars Hospital by New Wave Architecture. Photo: © World Architecture Festival

IDCS Design Excellence Awards 2017 honoured the Best Interior Designers of the Year

- National Kitchen awarded Gold in AkzoNobel Colour Award
- Nissan Crossing in Tokyo awarded IDEA Project of the Year
- Laank awarded Emerging ID Firm of the Year
- Metaphor Studio, One Plus Partnership and Wee Studio jointed awarded as Top 3 ID Firm of the Year

Interior Design Confederation Singapore's Design Excellence Awards 2017 announced the best interior designers of the year: 90 awards in 37 categories, with submissions from all parts of the world including Singapore, Australia, Hong Kong, Iran, Italy, Malaysia, the Netherlands, the United States of America and the United Kingdom.

The 5th edition of Design Excellence Awards (DEA) organised by Interior Design Confederation Singapore (IDCS) received a total of 180 entries across two competition tracks: Interior Design Excellence Awards (IDEA) for interior designers and firms; and Spatial Design Awards (SPADE) for students. The IDEA section saw 54 IDEA winners in 28 categories, while the SPADE section had 36 SPADE award winners in 9 categories. The best interior design practitioners and students were honoured with trophies and certificates for their exceptional projects at the DEA Gala Dinner held at the St. Regis Singapore on 21 November 2017.

"Design Excellence Awards 2017 has seen exponential growth of recognition at a global level. We received entries not only from regional countries but also from the U.S and Europe such as U.K, Italy. IDCS is impressed with the quality of work received which has set tremendously high standards in Interior and Spatial Design," said Mr Tung Ching Yew, DEA Chair of IDCS and Founder & Managing Director of SODA (Spirit Of Design Analogy).

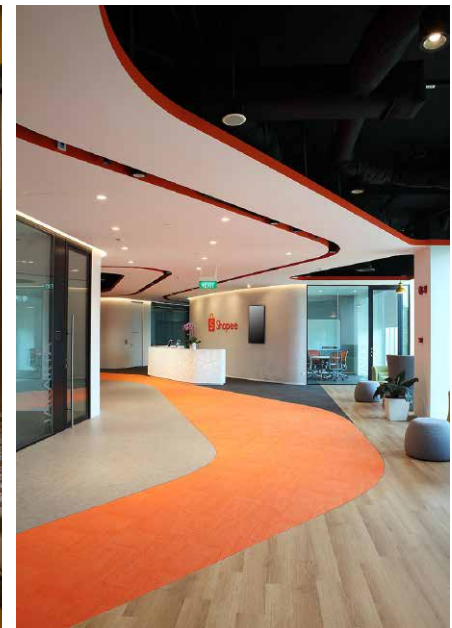
"The IDEA Project of the Year, Emerging ID Firm of the Year and Top 3 ID Firm of the Year Awards will celebrate the industry's Best of the Best Interior Designers in this year's awards programme. I am pleased to announce that DEA 2017 has surpassed IDCS' expectations and will be branded as an international awards programme from this year onwards," added Mr Tung.

The winning entries were selected by a five-member jury panel which included Chris Lee, Founder and Creative Director of Asylum; Kelley Cheng, Founder and Creative Director of The Press Room; Pann Lim, Co-founder and Creative Director of Kinetic Singapore; William Lau, Founder Principal of A.Alliance Design International and William Chan, Founder and Chief Designer of

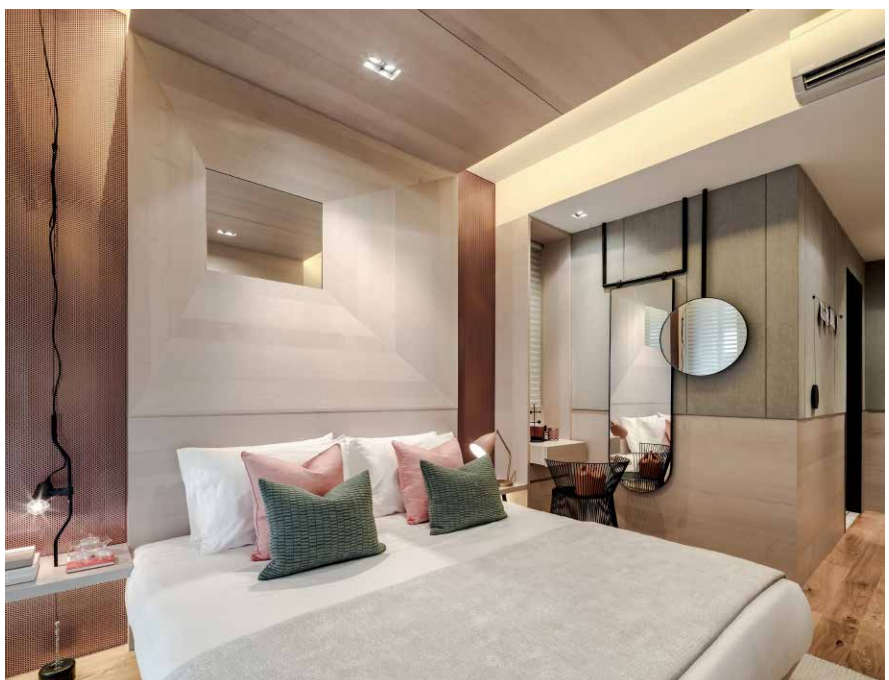
AkzoNobel Colour Award (new category)



Gold - National Kitchen by Laank.
Photo: © Laank Pte Ltd



Silver - Park Place Residences by Index Design. Photo: © Index Design Pte Ltd



Bronze - Shopee Singapore By DB&B. Photo: © DB&B Pte Ltd

Spacedge Designs. Entries were judged according to a scoring band, projects were not compared with each other in each category but scored individually in terms of merit.

Commenting on the entries for SPADE section, jury member Ms Kelley Cheng of The Press Room said, "There are a few exceptional pieces in the students' segment which showed thoughtfulness, sensitivity and intuition in aesthetics, these are exactly the gems we look for a competition as such to discover the design stars of tomorrow."

For the first time this year, IDCS partners AkzoNobel, world's leading manufacturer in decorative paints and performance coatings to further raise industry standards and celebrate design excellence by introducing a new category – the AkzoNobel Colour Award. Mr. Jeremy Rowe, Managing Director of AkzoNobel Decorative Paints, South East & South Asia, Middle East explained, "At AkzoNobel, we believe that colour has transformative power to brighten up everyday life. This new award aims to provide more well-deserved recognition to outstanding interior designers for their dedication to transforming otherwise ordinary spaces into vibrant places through the use of colour."

The inaugural AkzoNobel Colour Award saw three winning projects that have applied good use of colour to enhance the interior as well as add distinctiveness to the space and is judged by an independent three-member jury including Jeremy Rowe, Managing Director of AkzoNobel Decorative Paints, South East & South Asia, Middle East; Stephanie Kraneveld, Global Colour Training & Knowledge Manager of AkzoNobel Decorative Paints, The Netherlands and Cameron Woo, Founder, Cameron Woo Design (CWD).

"We were impressed by this year's winners who have used colour remarkably to create an ambiance that seamlessly blends the distinct personality of their customers into the space. We hope the AkzoNobel Colour Award will encourage more interior designers to challenge the boundaries to make places and people's lives more livable and inspiring," elaborated Mr Jeremy Rowe of AkzoNobel Decorative Paints.

Three different types of spaces – F&B, Residential, Workplace – were the final winners. Laank's National Kitchen won Gold award, Index Design's Park Place Residences received Silver award and DB&B's Shopee Singapore got Bronze award.

"Whilst one can use black as an accent to create definition, black can be used in the reverse as the predominant colour to create drama and accented with other colours, like they have in the National Kitchen." Commented Mr. Cameron Woo of Cameron Woo Design.

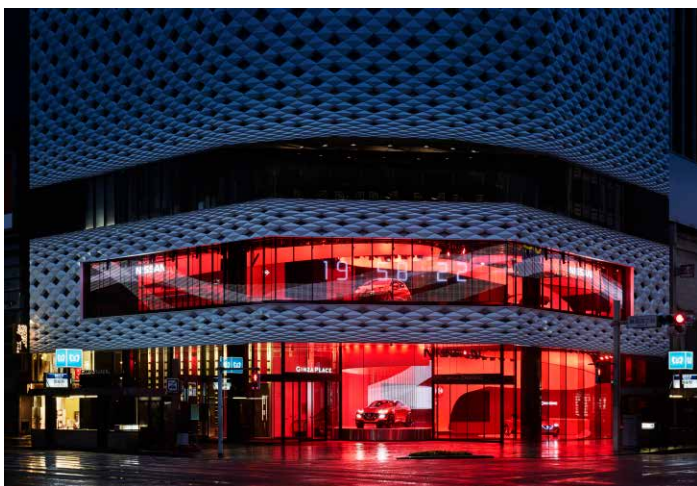
Interior Design Excellence Award (IDEA) Project of the Year (new category)

The much-anticipated IDEA Project of the Year is Nissan Crossing Experience Centre in Tokyo, designed by Tim Kobe from Eight Inc. The project also won a Gold Award in the Best Exhibition Design in Asia Pacific category. The judges concurred in selecting Nissan Crossing as this year's new IDEA Project of the Year, recognising its powerful and distinctive round centre exhibition space as perfect backdrop to feature the latest Nissan concept vehicles and rare classic cars. The streamlines of curves and circles in unified symphonic ribbons set the tone for a unique interior, suitably coupled with hi-tech sensory experience of the future. The project was lauded as a fine showcase of a well-integrated Architecture and Interior Design masterpiece as a stunning spectacle, with virtual facades in the most prime corner at the glitzy Ginza Place in Tokyo.

Emerging ID Firm of the Year (new category)

Only one of the many up-and-coming firms under five years of practice was hand-picked as the Emerging ID Firm of the Year. The inaugural award went to boutique-sized firm Laank for their design approach that shapes behaviour and steers reactions towards crafting a fuller, authentic brand experience. Laank also bagged two Gold awards – AkzoNobel Colour Award and Best F&B Design in Asia Pacific for space ≤ 2000 square feet – with the National Kitchen project. Jury member Mr Pann Lim of Kinetic Singapore commented, "I am both impressed and inspired by Laank because the spaces they create demonstrate breadth and depth in thinking. Laank's works go beyond the field of interior design because they understand brand design well, and they know how to apply that understanding to their spatial projects. As a result, no two spaces designed by Laank are alike, yet they exude the same sense of familiarity in the way the customer's experience in the space is curated."

Interior Design Excellence Award (IDEA) Project of the Year (new category)



Nissan Crossing by Eight Inc. Photo: © Eight Inc.

Emerging ID Firm of the Year (new category)



Melissa Raffles City by Laank. Photo: © Laank Pte Ltd

Top 3 ID Firm of the Year (new category)

The highest honour of Top 3 ID Firm of the Year was a unanimous decision made by the panel of judges. Metaphor Studio, One Plus Partnership and Wee Studio were awarded as joint winners for their consistently outstanding design work. The three firms were also multiple-award winners in different categories.

Metaphor Studio bagged two Silver awards with Valley Park designed by Angela Tantry in Best Residential Design in Singapore for apartment ≥ 2001 square feet; and The Trillium designed by Stephen Goh in Best Residential Design in Asia Pacific for apartment ≥ 2001 square feet.

Hong Kong-based One Plus Partnership took home the Gold, Silver and Bronze awards in Best Public Design in Asia Pacific, with their respective projects Guangzhou Jinyi Cinemas, Shanghai Omnijoi International Cinema and Nanjing Insun Feeling Cinema designed by Ajax Law and Virginia Lung.

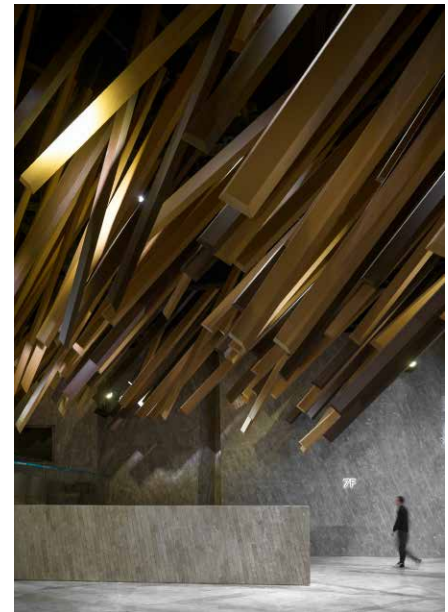
Wee Studio's Yeo See Wee received a Gold award for Wee Residence in Best Residential Design in Singapore for apartment 1001 - 2000 square feet, their Lotus Kitchen project got a Bronze award in Best F&B Design in Singapore for space ≤ 2000 square feet and the ZYT project got a Bronze award in Best Workplace Design in Singapore for space ≤ 2000 square feet.

Jury member Mr. William Lau of A.Alliance Design International commented, "The winners of TOP 3 ID Firm of the Year have unique profiles, charting completely different directions. Metaphor Studio is meticulous in details and highly versatile, with diverse gymnastic capabilities to switch design themes from earthy to contemporary, chic to cultural; One Plus Partnership is a rare firm who gets away with its avant garde, surreal and out-of-the-world ideas being implemented in real life; while Wee Studio is loaded with ideas to optimise and double up space utilisation, which are important criteria in our land scarce Singapore."

Top 3 ID Firm of the Year (new category)



Valley Park by Metaphor Studio. Photo: © Metaphor Studio Pte Ltd



Guangzhou Jinyi Cinemas by One Plus Partnership. Photo: © One Plus Partnership Limited



Lotus Kitchen by Wee Studio. Photo: © Wee Studio Pte Ltd

Do you have news?
 Don't keep it to yourself....
Share it with us!
 Email seab@tradelinkmedia.com.sg

Building sustainably to improve communities

Sustainable construction in Asia Pacific also means building for the community. This was clearly shown by the projects that won prizes in the regional LafargeHolcim Awards presented in Kuala Lumpur, Malaysia on 23 November 2017. The three main Awards winning projects deal with buildings for education – involving the community and sustainably improving neighbourhoods. The LafargeHolcim Awards is about more than just beautiful buildings. It stands out as the world's most significant competition for sustainable design. The criteria of the USD 2 million Awards are as challenging as the goal of sustainability itself. The competition seeks for projects at an advanced stage of design, not finished works. It acknowledges designs that go beyond current standards, showcase sustainable responses to technological, environmental, socioeconomic, and cultural issues affecting contemporary construction, and deliver truly visionary solutions to the way we build.

Defining sustainability

The first phase of the LafargeHolcim Awards competition takes place in five regions, leading to a global phase for the regional winners. The Asia Pacific competition region is particularly diverse in terms of cultures, countries, and climates. This was perfectly reflected in the more than 1,100 projects submitted. Jury member Marc Angéilil, Professor of Architecture and Design at the Swiss Federal Institute of Technology (ETH Zurich), noted how the "target issues" for sustainable construction, set forth by the LafargeHolcim Foundation and its affiliated universities, allow diverse projects to be compared and ranked. These "target issues" define the principles of sustainability in a holistic way, independent to the type of project or its scale. Marc Angéilil also noted the high quality of submissions: "Sustainability has become comprehensive, systematic and specific – you have to deliver a truly special entry to stand out!"

Gold: Home for marginalized children in India

atArchitecture from Mumbai, India plans to replace an unacceptably deficient shelter for marginalized children in Thane, a city in western India. With a well-developed building concept and a clearly evident child-friendly design, the architects embrace both architectural and social sustainability. The centre also accommodates community activities for senior citizens, for women's development training, and a crèche. "The proposal goes beyond social sustainability to include passive building technology, innovative design measures, and a viable economic model," praised the jury.

Silver: Microlibrary in Indonesia

The promotion and dissemination of knowledge is a recurring theme in the LafargeHolcim Awards – and is reiterated within the project by SHAU from Bandung, Indonesia. Their pavilion in a park is as minimalistic as it is well conceived – providing not only a public library, but also storage facilities, public toilets, and a prayer room. "The project is open on all sides to the park surrounding it, inviting the community to enter and explore; it constructs a territorial landmark reinforcing literacy and defining community," said the jury.

Bronze: Floating university building in Bangladesh

WOHA from Singapore aims to introduce buildings and open space on remediated swampland in Dhaka, Bangladesh. They designed a university building that floats on a pond – and the overall design supports the cleaning of the pond. With vertical garden facades, photovoltaic panels, and controlled ventilation, this project could become a benchmark for sustainability in the Asia Pacific region. "Sustainability is deeply integrated into the building design, from thermal zoning to significant reductions in the use of energy and water," stated the jury.



Group photo of three main award prize winners.
Photo: © LafargeHolcim Foundation

Acknowledgement prizes: For the benefit of communities

In the regional LafargeHolcim Awards, four projects in each region receive an Acknowledgement prize. Architects from Jakarta, Indonesia, plan to promote organic agriculture in rural Java with a training centre for young farmers. A team from Tsinghua University and the Beijing University of Civil Engineering & Architecture in China proposes strategies for improving a historic district in Beijing with the support of local residents. A team from the Massachusetts Institute of Technology in Cambridge, MA, USA, has designed an earthquake-resistant multifunctional building for water storage and flexible public use in Thecho, Nepal. Furthermore, Bangkok Project Studio from Thailand suggests a community hub in Rayong, Thailand, that multiplies the opportunities for cultural and community activities in the village.



Group photo of Acknowledgement prizes winners. Photo: © LafargeHolcim Foundation

Next Generation prizes: The future is in their hands



Group photo of Next Generation prizes winners. Photo: © LafargeHolcim Foundation

Four prizes were awarded in the increasingly popular Next Generation category for students and professionals up to 30 years. This category seeks visionary projects and bold ideas, and gives young professionals public exposure and a platform to gain recognition. The first of four Next Generation prizes in the region went to Mengyuan Zhu from China. She developed a model for transforming and revitalizing the village of Guming near Nanjing. The second prize went to Vedhant Maharaj from South Africa. He designed a culturally sensitive water-treatment infrastructure in Varanasi, India. Andi Subagio from Indonesia received the third prize in this category. He designed a multifunctional school in Ruteng, Indonesia. The fourth prize went to Tzu-Jung Huang from Taiwan. He studied the interrelationships between developed zones and ecological systems in Taichung City, Taiwan.

From project to reality: Community library and social recuperation

This is the fifth time the LafargeHolcim Awards competition is being conducted. Over the years, more than 200 projects have been awarded worldwide. More than half the winning projects have been built or are scheduled for completion soon. Thus, the LafargeHolcim Awards are not about "castles in the air" but about tangible measures that advance the science of construction. This aspect of tangible change is underscored by a new prize category that's being awarded for the first time in 2017: the LafargeHolcim Building Better Recognition. It is awarded for a winning project from a previous competition cycle, one that has been realized and has stood the test of time as a particularly successful example of sustainable building.

In Asia Pacific, this accolade went to Robust Architecture Workshop in Colombo, Sri Lanka, represented by Milinda Pathiraja. Their design for a community library in Ambepussa, Sri Lanka, built with the support of former army personnel engaged in the nation's civil war, shows that "turning swords into ploughshares" can be realized even today. The project received the regional LafargeHolcim Awards Bronze for Asia Pacific in 2014 and the Global



Milinda Pathiraja. Photo: © LafargeHolcim Foundation

LafargeHolcim Awards Silver in 2015. Today the library is a source of knowledge for veterans and the local community. The construction methods were selected specifically to help transition members of the army to civil life.

Prizes help make common sense commonplace

The magnified interest among architects, engineers, urban planners, and developers proves that sustainability has become embedded as “common sense” in the construction industry. The fifth cycle of the competition attracted more than 5,000 entries from authors in 121 countries. 3,606 entries were deemed valid, and more than half of these passed the pre-screening phase. They advanced for qualitative assessment by five independent expert juries in the competition regions Europe, North America, Latin America, Middle East Africa, and Asia Pacific. The juries evaluated the projects based on the five “target issues” for sustainable construction set forth by the LafargeHolcim Foundation – principles which define sustainable construction in a holistic way. The Gold, Silver, and Bronze winners from each region will compete for the Global LafargeHolcim Awards in 2018.

Winners of the LafargeHolcim Awards 2017 Asia Pacific

- LafargeHolcim Awards Gold 2017 Asia Pacific**
Home for marginalized children, Thane, India: On a tight urban site, this project houses orphaned children in a building with a playful and generous vertical form. By Avneesh Tiwari and Neha Rane, atArchitecture, Mumbai, India.
- LafargeHolcim Awards Silver 2017 Asia Pacific**
Learning center, Bandung, Indonesia: Using simple construction, this “Microlibrary” creatively promotes literacy and community across Indonesia. By Daliana Suryawinata and Florian Heinzelmann, SHAU, Bandung, Indonesia.
- LafargeHolcim Awards Bronze 2017 Asia Pacific**
BRAC university campus, Dhaka, Bangladesh: Remediating polluted swamp land and floating a new university building upon it, this project adds both open and built space to the city. By Mun Summ Wong, WOHA, Singapore.
- LafargeHolcim Awards Acknowledgement prize 2017 Asia Pacific**
Training centre for organic agriculture in Parung, West Java, Indonesia: Organic farm and vocational centre on the outskirts of Jakarta metropolitan region. By Kamil Muhammad and Brahmastyo Puji, pppooolll, Jakarta, Indonesia.
- LafargeHolcim Awards Acknowledgement prize 2017 Asia Pacific**
Baitasi urban regeneration, Beijing, China: Regeneration of a historic neighbourhood deploying minimal means for maximum effect. By Yue Zhang, Liying Wu, Peiming Li, Cong Nie, Mengxing Cao and Yue Wang, Tsinghua University; and Shimeng Hao, Beijing University of Civil Engineering & Architecture, all in Beijing, China.
- LafargeHolcim Awards Acknowledgement prize 2017 Asia Pacific**
Multifunctional public space, Thecho, Nepal: A water-treatment and reservoir facility wrapped with social infrastructure. By Miho Mazereeuw, David Moses, Aditya Barve, Larisa Ovalles and Hugh Magee, Massachusetts Institute of Technology, Urban Risk Lab, Cambridge, MA, USA.
- LafargeHolcim Awards Acknowledgement prize 2017 Asia Pacific**
Ban Chang town hall, Rayong, Thailand: Surrealistic pavilion that turns a local waste product into a durable contribution to community. By Boonserm Premthada, Bangkok Project Studio, Bangkok, Thailand.
- LafargeHolcim Awards Next Generation 1st prize 2017 Asia Pacific**
Participatory village transformation, Guming near Nanning, China: Low-rise, high-density urban transformation of a rural village. By Mengyuan Zhu, Southeast University, Nanjing, China.
- LafargeHolcim Awards Next Generation 2nd prize 2017 Asia Pacific**
Water treatment infrastructure, Varanasi, India: Poetic interpretation of a water-purification facility providing public space on the banks of the Ganges River. By Vedhant Maharaj, Rebel Base Collective, Johannesburg, South Africa.
- LafargeHolcim Awards Next Generation 3rd prize 2017 Asia Pacific**
Vocational training facility, Ruteng, Indonesia: A school that is more than an educational facility – a hub for multiple communal activities and vocational training on the island of Flores. By Andi Subagio, SASO, Jakarta, Indonesia.
- LafargeHolcim Awards Next Generation 4th prize 2017 Asia Pacific**
Exploring resilient ecosystems, Taichung, Taiwan: Exploration of material stocks and flows at multiple scales as an alternative to predominant modes of city development. By Tzu-Jung Huang, Feng Chia University, Taichung City, Taiwan.

LafargeHolcim Awards Gold 2017 Asia Pacific

Home for marginalized children, Thane, India

Main authors

Avneesh Tiwari, and Neha Rane, architects, atArchitect, Mumbai, India

Summary and appraisal of the project by the jury

A home for 30 children, this building replaces their existing facility, which tends to flood and lacks ventilation. The proposal reacts to the constrained site by leaving a void for ventilation at the back of the site, drawing air upward and providing indirect light. Terracotta louvers are envisioned as scaffolding for greenery that can help cool the interior and potentially provide a small business opportunity harvesting greens. The raised ground floor accommodates services for women and the elderly and the upper floors are reserved for the children and their caretakers. That this is mainly a space for children is reflected in the playful design sensitive to their scale and perception.



Photo: © LafargeHolcim Foundation

The jury was taken with the project's "Alice in Wonderland" – like approach, which re-envisions a small urban building through the eyes of children. In doing so, it also provides them with a dignified and comforting environment. The compact, quirky building form nevertheless achieves a feeling of spatial generosity through the inclusion of a central vertical void for circulation, light, and ventilation. The proposal goes beyond social sustainability to include passive building technology, innovating design measures, and a viable economic model. The next step towards implementation will need to be a further development of the project from compelling schematic design to a convincing translation into construction detailing.

Statements on the sustainability of the project by the author

Stacking/planning

The ground floor of the centre is kept open to accommodate community activities for senior citizens, a crèche, women's development training etc. The space is planned like a veranda opening up to a private courtyard on the north side and partly opening up to adjoining lanes on the other three sides, shaded by first floor overhang. The middle floor dedicated to children's sleeping areas is more enclosed to create a secure and personal environment. Protected by a façade of operable nursery installed louvers on the south, recreational bands are provided towards the east and west with the north side opening up to the private courtyard below. The top floor houses all the storage spaces, study areas and caretaker's sleeping place. It shelters the children's living space underneath from direct sun.

The envelope – North South East West

The north facade is a dead wall shared with an adjoining house so all services are planned against it, keeping the remaining envelope open for ventilation. A vertical nursery is planted on the south to buffer the living areas from the scorching heat. It also functions as a small-scale industry yielding returns in the form of 15 percent of the centre's maintenance cost. This nursery is installed in adjustable terracotta louvers making it easy to access and maintain the plants. The sun shades, made out of thin folded plates of concrete, on the east and west are used as private recreational areas by converting them into play-stations, furniture etc, giving the centre an additional 25 square metres of usable area. Central courtyard helps with passive cooling and natural light, reducing the operational energy load.

Construction efficiency

Wall in-fills consist of custom designed terracotta hollow blocks with one side left open to use as shelves. Fabricated by a terracotta factory in a neighbouring slum, this new construction system helps to involve local artisans. The load bearing members (i.e. the columns, slabs, staircases etc.) are made out of fair faced concrete making it maintenance free and help consume the least amount of floor area compared to any other building material. A raft is used instead of isolated footings, creating an extra underground volume at the nominal cost of retaining peripheral walls, with this space used as a 55,000-litre rainwater-harvesting tank. The courtyard and stairway leading to the first floor merge to form a playful stepped pavilion, which acts as an extension of the community space.

PROJECT DATA

Project group: Architecture, building and civil engineering
Client: Community Outreach Programme (CORP)
Project background: Public commission
Planned start: December 2017

Image 1: Top: Isometric view of the informal settlement and our proposed insert – seen from a neighboring hill. Bottom: Existing scenario: the structure – its tin roof and lack of ventilation makes the summers unbearable and the monsoons flooding the ground floor. The design also does not provide for any open space and disregards basic necessities such as adequate light, storage, toilets and sleeping areas. Users – community centre and children’s home. Photo: © LafargeHolcim Foundation

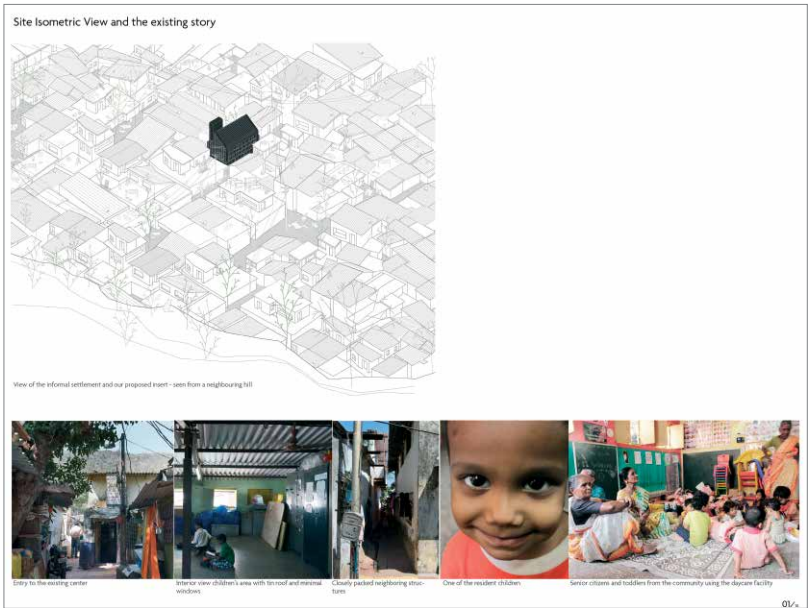


Image 2: Left: Front elevation (design proposes a new playful elevation that follows differing proportions to respond to the varying anthropometric needs of its users). Right: Section evolution diagram and site plan. Photo: © LafargeHolcim Foundation



Image 3: Sustainability strategy addressing "target issues". Photo: © LafargeHolcim Foundation

Image 4: Ground floor plan and first floor plan. Photo: © LafargeHolcim Foundation

Image 5: Ground floor community centre. Photo: © LafargeHolcim Foundation

Image 6: Top floor plan and cross-section. Photo: © LafargeHolcim Foundation

Image 7: The children’s living space enjoys a vertical nursery on one side and views of the courtyard. Photo: © LafargeHolcim Foundation

Image 8: Longitudinal section. Photo: © LafargeHolcim Foundation

Image 9: Stepped pavilion, top floor internal space, south elevation. Photo: © LafargeHolcim Foundation

Image 10: Exploded isometric view. Photo: © LafargeHolcim Foundation

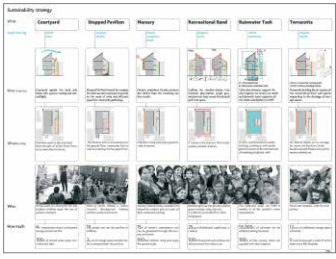


Image 3

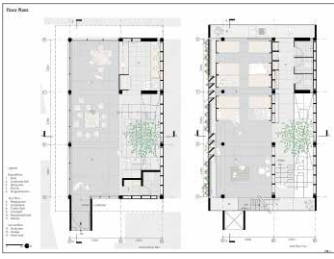


Image 4



Image 5

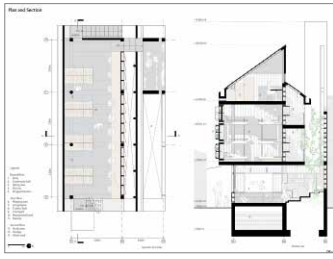


Image 6



Image 7

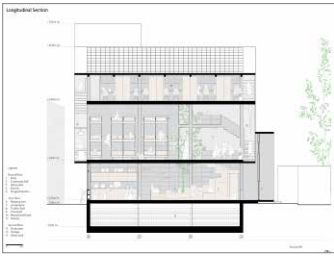


Image 8



Image 9

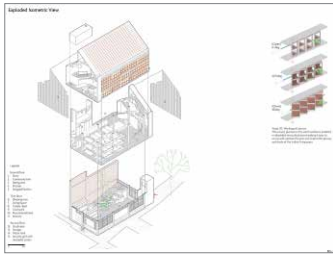


Image 10

LafargeHolcim Awards Silver 2017 Asia Pacific

Learning Center, Bandung, Indonesia

Main authors

Florian Heinzelmann, and Daliana Suryawinata, architects, SHAU, Bandung, Indonesia

Summary and appraisal of the project by the jury

Set within a park, this "Microlibrary" aims to raise literacy by offering attractive spaces for reading. The proposal is part of a larger project to construct a network of libraries across the country. It will be the fourth completed by the group, each with a unique, site-specific design. This pavilion structure rests on four spirals of columns that define smaller enclosed spaces for storage, restrooms, and a prayer room. The rest of the covered space is completely open to the park. Ground and ceiling are covered with both natural and artificial greenery to extend the park into the building. Basic construction methods are easily achievable in the local context. By putting together simple components in a creative way, the project achieves complexity with minimal means.

The jury was impressed by the project's vision of a network of libraries across Indonesia. Especially compelling is the specificity of each individual project. Every building responds to the needs of the local community and the urban context. Here, the project opens on all sides to the park around it, inviting the community to enter and explore. This is a fresh approach to the library – typically, a rarefied, closed environment. Unconventional materials – in this case, a moss ceiling and artificial grass floor – also make the project an exploration in unorthodox textures and construction techniques. By multiplying small, inviting reading spaces without replicating a single design gesture, the project constructs a territorial project reinforcing literacy and defining community.



Photo: © LafargeHolcim Foundation

Statements on the sustainability of the project by the author

Microlibrary as a program to empower users: the power of small, attractive, and many

In 2012, we initiated the Microlibrary programme, with a mission: to make learning attractive and reachable for Indonesia and beyond. Though the economic forecast for Indonesia is optimistic, the current infrastructure does not support to improve its Human Development Index. Eager-learning students are hindered by the lack of facilities; libraries are far from being popular. The role of beautiful design can make libraries attractive again. Instead of positioning libraries in the city centres, why don't we bring libraries closer to their homes? In 2016, two micro libraries have been built in Bandung. Four more are in planning, one is the Fibonacci Micro library. Each micro library is uniquely-designed to fit programmatic demands of each community's and site's potential.

From file to craft: bridging parametric-based design with local construction technique. The question is how to design and build within a simple manual labour-focused construction environment. Instead of from "file to factory", a "file to craft" solution was sought. The parametric grasshopper model uses standardized construction elements (the rib structure) in a flexible way to generate design variations in terms of the amount of ribs, number, orientation and layout of spiral rooms, building height, rib dimensions. For the material, shotcrete structural insulated panels are used. Here concrete is sprayed onto a form core clad in a metal mesh. In this case it gives the opportunity to build a lightweight construction, which reduces the load on the foundation and thus material usage. Cast in-situ method also solves logistic issue of transporting prefab ribs to the site.

New nature: modern urban ruin in the lush green park (landscape = furniture = structure)

Being situated within a park, having an all-side open pavilion where one can enter from any direction is contextual and relevant. We would like to perceive the pavilion as a fully integrated structure and being reclaimed by nature like an almost forgotten ruin. We question the modernist idea of functional separation of constructive elements and thus the columns made of ribs were designed with a bigger radius so as to house multiple programs. At the same time the ribs will function as integrated bookshelves for the library. In that sense the spiral array of the ribs is a hybrid of structure, functional requirements and fixed furniture. Green roof, moss ceiling and green carpet (artificial grass) enable the continuation of the park into the library, an experience of seamless green spaces.

PROJECT DATA
Project group: Architecture, building and civil engineering
Client: City of Bandung
Project background: Public commission
Planned start: December 2017

Image 1: Fibonacci Microlibrary as an “urban ruin” in the middle of the lush park. The parametrically designed, spirally-arrayed structure blends in while at the same time, stands out. The form invites park users to come. At a glance the users do not perceive the sculpture as a library, yet soon upon entering they could pick a favorite spot and start reading. By means of architecture design we would like to make reading attractive (again). The three spiral rooms host a kiosk, a musholla and two toilets. Photo: © LafargeHolcim Foundation

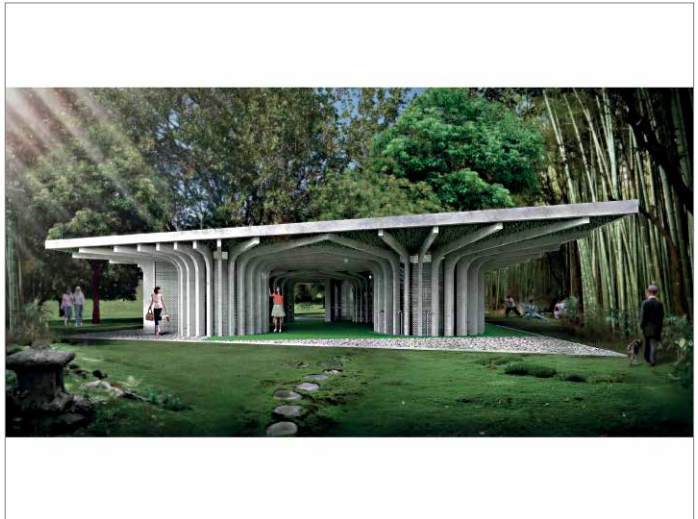


Image 1

Image 2: The combination of lightweight concrete structure, green roof, moss ceiling and artificial grass carpet, present a “new nature” in itself. The green surface of the park is continued into all horizontal surfaces of the library. As a result, visitors may experience going through a sequence of open and semi-open green spaces. The all-side open pavilion where one can enter from any direction allow cross-ventilation and natural lighting. The main area can be used for reading and community gathering. Photo: © LafargeHolcim Foundation



Image 2

Image 3: Microlibrary is a campaign to raise literacy by means of unique architecture and empowerment. Photo: © LafargeHolcim Foundation

Image 4: The first two micro libraries have been built in Bandung, while four are in planning. Each is unique. Photo: © LafargeHolcim Foundation

Image 5: For this micro library, the location is at Taman Kolam, a lush urban park in Bandung. Photo: © LafargeHolcim Foundation

Image 6: Radial structure with integrated functions allows continuous, flowing indoor-outdoor spaces. Photo: © LafargeHolcim Foundation

Image 7: The plan uses spirally arrayed columns, where each spiral hosts a kiosk, a musholla and two toilets. Photo: © LafargeHolcim Foundation

Image 8: An isometric diagram of the structure in parts. Photo: © LafargeHolcim Foundation

Image 9: Left: Concept model shots (without and with roof). Right: 3D image specifying material. Photo: © LafargeHolcim Foundation

Image 10: Left: 1:1 foamcrete mock-up panels and detail. Right: moss ceiling impression and detail. Photo: © LafargeHolcim Foundation

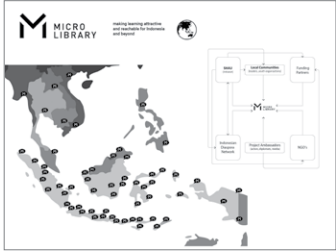


Image 3

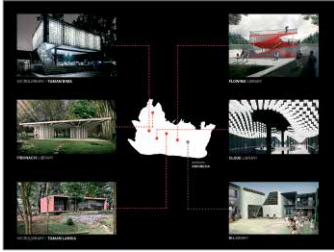


Image 4



Image 5

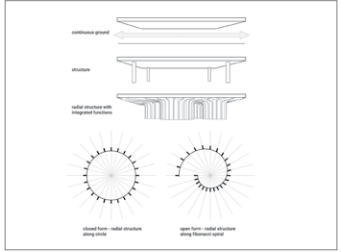


Image 6

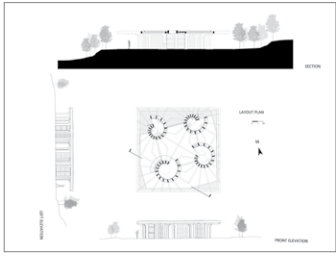


Image 7

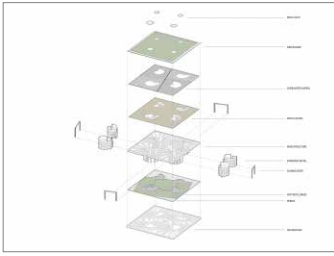


Image 8

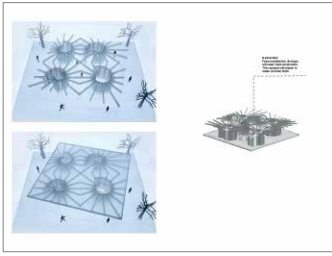


Image 9

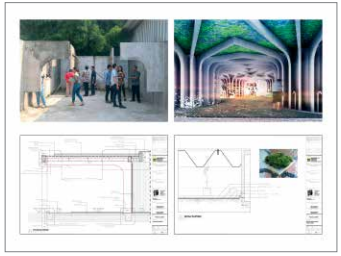


Image 10

LafargeHolcim Awards Bronze 2017 Asia Pacific

BRAC university campus, Dhaka, Bangladesh

Main author

Mun Summ Wong, architect, WOHA, Singapore

Further authors

Richard Hassell and Sim Choon Heok, architects, WOHA, Singapore, Jalal Ahmad, principal architect, J.A. Architects, Dhaka, Bangladesh, and Wolfgang Kessling, climate engineer, Transsolar Energietechnik GmbH, Munich, Germany

This project achieves the impossible: it adds both built and open space to the city. The site is polluted swampland within Dhaka. Working with the client, an NGO-run university by BRAC (Building Resources Across Communities), the project team proposes a building that floats above the pond. First, the water itself is remediated into a bio-retention pond. The whole ground level of the project is opened to the public. Above, sustainable thinking permeates the design of the university building. Brise-soleil and planted façades optimize the interior climate, reducing cooling demand by 40 percent. Water recycling and rainwater collection reduces water use by nearly 50 percent. Photovoltaic panels and beekeeping transform the roof into a productive environment. In total, green areas cover more surface than the area of the entire site.

When this project is built, the jury believes that it will set a new benchmark for sustainability in Asia. Rapid urbanisation has deteriorated Dhaka's water bodies and natural habitats. The design remediates a natural area and opens it back up to the city. It situates the building in a way that allows both the university and the public to inhabit the site. Sustainability is deeply integrated into the building design, from thermal zoning to serious reductions in the use of energy and water. Particularly commendable is the way a single building is conceived as a larger rejuvenation project for the city.

When this project is built, the jury believes that it will set a new benchmark for sustainability in Asia. Rapid urbanisation has deteriorated Dhaka's water bodies and natural habitats. The design remediates a natural area and opens it back up to the city. It situates the building in a way that allows both the university and the public to inhabit the site. Sustainability is deeply integrated into the building design, from thermal zoning to serious reductions in the use of energy and water. Particularly commendable is the way a single building is conceived as a larger rejuvenation project for the city.



Photo: © LafargeHolcim Foundation

Statements on the sustainability of the project by the author

Promoting human well-being and comfort in the built environment

BRAC University's mission statement is to foster the national development process through the creation of excellence in higher education that is responsive to society's needs. The design responds with an environment that is conducive to learning and human interaction. Strategies include:

- Access to natural light and ventilation – direct end-user control of the environment of the classroom.
- Universal accessibility for all.
- Transitions from indoor to outdoor – the building is not hermetically sealed and air-conditioned but offers a variety of spaces.
- Landscape as an inspiring, stimulating, biophilic environment with a strong connection to its natural surroundings.
- 250 percent of the site footprint is space for social interaction and is accessible by and integrated with the surrounding neighbourhood.

Enhancing urban biodiversity

Dhaka's rapid urbanization has resulted in the displacement of the city's water bodies, vegetation, wildlife and open, civic spaces, resulting in a dusty, harsh environment. The new campus aims to bring back some of the lost biodiversity to the city through:

- Vertical gardens (large podium columns from ground to L3, covered in planting media and epiphyte plants) and edge-stacked planters on the east and west (forming an intrinsic façade shading device) that attract insects and other animals and improve the air quality.
- A roof lawn and fruit trees that attract pollinating bees, form a bird habitat and produce fruit for consumption.
- Water features that recreate an ecosystem with local plants, forming a habitat that supports biodiversity.
- Green areas provide a total 127 percent of the site footprint.

Reducing waste, saving energy and water

All organic waste created on campus is composted for maintenance of the landscape. The building uses Adaptive Thermal Comfort using 7 modes of cooling/ventilation, fine tuning the building to the local climate. These include enhanced breezes, elevated air speed, dry misting, hybrid tempered, full AC, and mechanical ventilation, optimizing fresh air. The fine-tuned thermal zoning and passive optimisation – brise soleil, planted façades, roof canopy – of the building envelope results in 40 percent reduction in demand. The 6,900-square-metre 1600 KW PV roof shade contributes 18.5 percent of energy required, resulting in 58.5 percent reduction compared to the reference building. Water recycling of both grey for landscape and black water for toilets, with rainwater collection, gives a 46.5 percent reduction in use.

PROJECT DATA
Project group: Architecture, building and civil engineering
Client: BRAC University
Project background: Private commission
Planned start: July 2016

Image 1: The campus park is the public interface and heart of the university. Given the urban lake site, the vision is to present an innovative and sustainable inner city campus that exemplifies tropical design strategies in response to the hot, humid, monsoon climate while demonstrating the sensitive integration of nature and architecture. The main design strategy is to create two distinct programmatic strata by floating the academia above the lake and revealing a campus park below. Photo: © LafargeHolcim Foundation

Image 2: Social interaction spaces are incorporated throughout the university to allow for both planned and spontaneous student activities. Differing scales and types of social spaces cater to varying group sizes, all designed for maximum comfort and interaction, with dynamic visual links across levels allowing students to observe activities happening across voids. The building section is designed to catch the breezes and direct them to these gathering spaces, while providing shelter from sun and rain. Photo: © LafargeHolcim Foundation

Image 3: Main strategy is to create two distinct programmatic strata by floating the academia above the lake. Photo: © LafargeHolcim Foundation

Image 4: The design strategy reflects the synergistic coexistence between mankind and mangrove. Photo: © LafargeHolcim Foundation

Image 5: Rooftop sky park holds a liberal open playing field, running track, swimming pool and cricket pitch. Photo: © LafargeHolcim Foundation

Image 6: Site plan. Photo: © LafargeHolcim Foundation

Image 7: First floor plan. Photo: © LafargeHolcim Foundation

Image 8: Section A. Photo: © LafargeHolcim Foundation

Image 9: Section D. Photo: © LafargeHolcim Foundation

Image 10: Section E. Photo: © LafargeHolcim Foundation



Image 1



Image 2



Image 3



Image 4



Image 5



Image 6

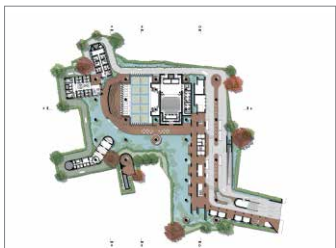


Image 7



Image 8



Image 9



Image 10



ANGIOINO CASTLE IN APULIA

Products from the Mapei-Antique line were employed to restore and preserve a national monument in the Salento area in Southern Italy.

In the ancient town centre of Copertino, a small town in the Salento area in the Apulia region of South-East Italy, the castle, dating back to the Norman-Suevian era, was extended and given a more refined look during the Angevin period.

The castle is one of the most important and evocative architectural structures in the Salento area. It has been a national monument since 1886 and was granted a protection order in 1955. The imposing structure we see today was expanded in 1540 according to the principles of military architecture of the time following the discovery of gunpowder. Around the external perimeter of the castle there are 90 slits, or cannoniers, with cavities so the cannons could be moved around more easily, while a defensive moat dug out of the rocks at the base of the castle complete its fortress-like appearance.

The Castle was also a refined dwelling place, as testified by the Renaissance balcony with an openwork balustrade and its lavish portal. The decorative features of the castle, carved from local limestone, were then stuccoed at a later date to protect them from the wind which, over the centuries, had eroded them. Since the Castle is a typically commemorative structure, there is a collection of images of the various dynasties of kings, queens and feudal lords that have followed over the centuries in Copertino.

From the picturesque internal atrium you can enjoy a full view of the Angevin menfolk. If you continue up the Renaissance staircase leading to the noble floor, you can admire the 15th century family chapel named in honour of St. Maria Magdalena.

Also worthy of mention are the long, wide galleries running inside the perimeter of the fortress, which today are used to hold cultural events.

Understanding, restoring, promoting

Right from the initial design phase, Mapei took part in the conservation and protection work on the stone surfaces of the external curtain walls of Angioino Castle in Copertino, including the north-east side with its two bastions.

The intervention had several objectives:

- to understand their current condition and problems
- the conservation of the natural overtones and the materic and historic values of the monument
- to have a full and complete perception of the monument so that any visible restoration work would not disturb its overall image
- to guarantee that the intervention would be durable and cost effective to ensure the future conservation of the monument



Left and top right: Angioino Castle in Copertino (Lecce, Italy) upon completion of the work. Mapei products were supplied to restore the walls.

Right: The castle before commencing work. Before starting the intervention, an in-depth study was carried out to analyse the problems with the walls and identify the most appropriate solutions.



- the intervention itself would be in keeping with other work carried out in previous years.

3D laser scanning analysis

A full analysis of the castle was carried out using a three-dimensional laser scanner, enabling a complete, high-definition picture of the monument to be obtained and of both the curtain walls on which the work was to be carried out and of all the internal rooms. An in-depth study of the materials used specifically for the facing walls was carried out by the Mapei Laboratories, who performed a preliminary testing campaign in order to characterise the chemical and physical properties of the stone and mortar used to build the facing walls, identify the cause of the damage and choose the most appropriate products.

Based on the results of the analysis,

restoration work on the curtain walls was carried out by constantly balancing the choices made by the design engineer, the restorer and the technicians involved in the project. The method used to clean away the black encrustations, replacement of the stones in the walls that had been damaged beyond repair, the mixes and colours of the pointing mortars and the properties, compositions and textures of the replacement materials could only be finalised once samples had been taken during the various work phases so that the quality of the work, including from an aesthetic point of view, could be optimised.

Cleaning and consolidation

The first step was to remove all the harmful bacterial organisms and wash the surfaces of the stone by applying SILANCOLOR CLEANER PLUS high penetration cleaning

solution to completely remove the algae and fungus that had damaged the surfaces of the walls. All the damaged mortar between the blocks forming the exposed-finish walls was removed with hand and power tools to create a sound, compact substrate. The surface of the tuff walls then needed to be thoroughly cleaned with high pressure water jets to remove the layers of microorganisms and any traces of materials used during previous work. The surface of the portal was consolidated with CONSOLIDANTE 8020, a ready-mixed, reversible liquid product made from vinyl-versatate copolymers in a hydroalcoholic mix, characterised by its capacity to penetrate deeply into porous substrates and its excellent resistance to alkalis and UV rays. The molecules of the copolymers are extremely small which also makes the product suitable for consolidating substrates with very small pores.



(1)



(2)



(4)



(3)

Restoration of the walls

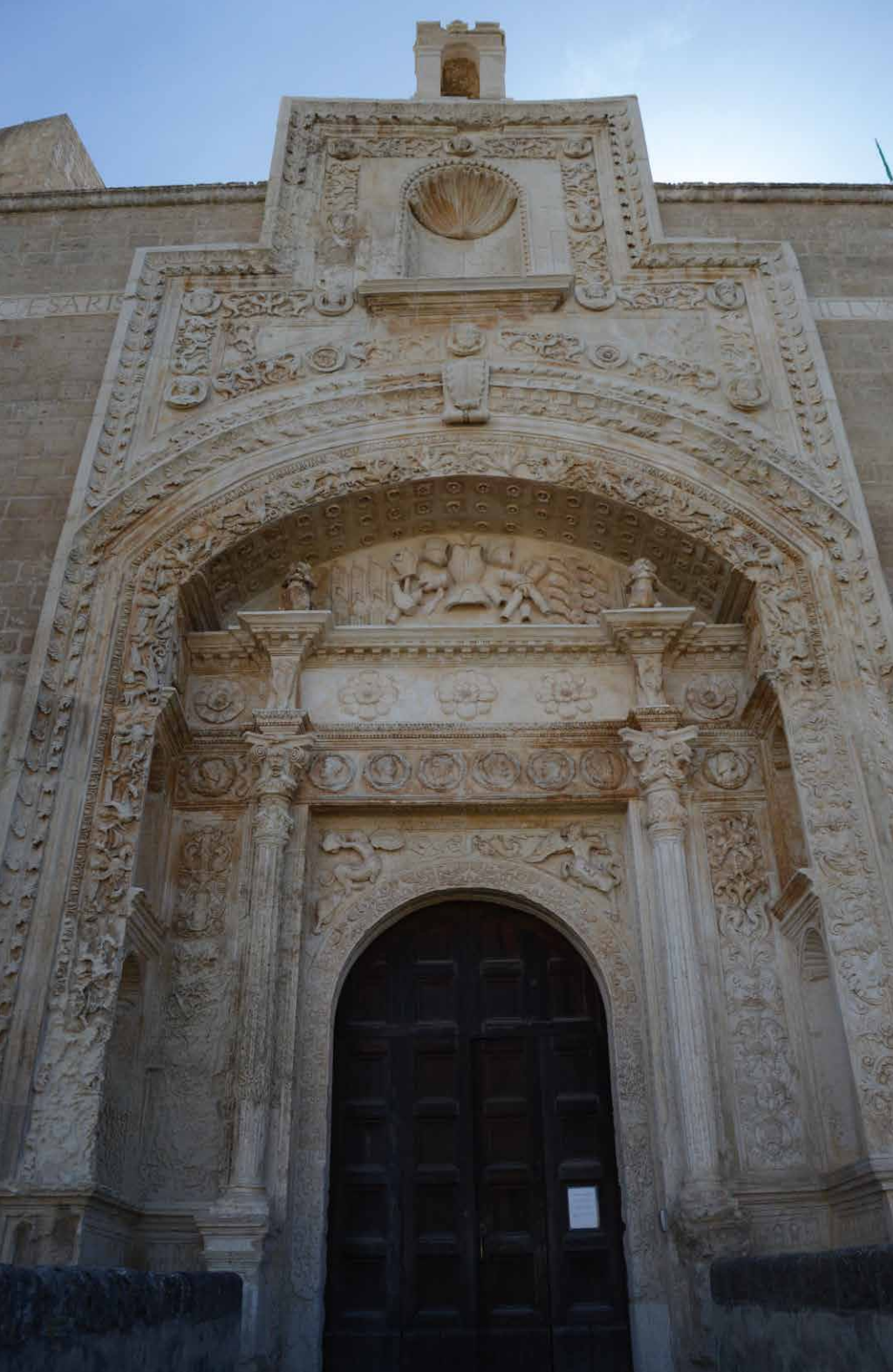
Restoration of the walls using the "patching" and "cladding" techniques was required in the more badly damaged areas of the facing wall, where blocks were either missing or cracked and where the joints between different portions of the same wall had been damaged. All these operations were carried out using MAPE-ANTIQUÉ ALLETTAMENTO, a ready-mixed, cement-free, powdered building mortar made from natural hydraulic lime, Eco-Pozzolan, natural sand, special additives and microfibers according to a formula developed in the Mapei research laboratories. The joints between the blocks of tuft were also pointed with MAPE-ANTIQUÉ ALLETTAMENTO.

In order to provide adequate protection to the facing walls and ensure the durability of the restoration work, the final and decisive phase of the intervention was to treat the exposed stones with the water-repelling product ANTIPLUVIOLS, a transparent, water-

Photos (1) and (2): A preliminary analysis was carried out to get a more in-depth understanding of the materials used to build the facing walls.

Photo (3): MAPE-ANTIQUÉ ALLETTAMENTO was used for "patching" and "cladding" and to repoint the exposed walls.

Photo (4): In the final phase of the work, the facing walls were protected with ANTIPLUVIOLS, a transparent, water-repellent, silane and siloxane-based impregnator.



The lavish portal to the castle: its decorative surrounds are carved from local limestone.

PROJECT DATA

Project: Castello Angioino, Copertino
Location: Lecce, Italy
Period of Construction: 1540
Period of Intervention: 2014–2016
Original Project: Evangelista Menga
Intervention by Mapei: supplying products for masonry restoration
Client: Regional Secretary of MIBACT Puglia
Sole Responsibility of the Intervention: Francesco Longobardi
Final project and coordination: Augusto Ressa
Scientific Direction: Caterina Ragusa, Laura Masiello
Works Direction: Augusto Ressa
Safety coordination during the works: Francesco De Sanctis
Jobsite Technical Director: Antonio Perrotta
Works Direction Office: Achille Ciccio, Gabriella Imperiale
Contractor: Valore Restauri Sri (Nardò, Lecce), HGV from San Severo (Foggia), Digitarca di Mola (Bari) and Tecnologia Edilizia Impianti from Valenzano (Bari)
Safety coordination while designing: Pietro Ciammarusti
Architectural Design: Giovanni Vincenti, Salvatore Caputi Lambrenghi, Angela Verroca
Structural Design: Luigi Nigro
Mechanical System Design: Angelo Gentile
Electrical System Design: Federico W. Basti
Artistic Restoration: Vincenzo De Bellis, Maurizio Lorenzoni
Mapei Distributor: Gruppo Petulicchio Srl / Edil VN Srl (Nardò, Lecce)
Mapei Coordinator: Davide Bandera, Achille Carcagni, Giammario Dispoto, Luca Carcagni, Danilo De Matteis (Mapei SpA)
Photos and videos: Foto Video Spot – Lizzanello (Lecce, Italy)

repellent finish made from silanes and siloxanes in solvent, which penetrates deep down into the substrate and reacts with the natural moisture inside walls to form a hydrophobic layer that repels water.

The products from the MAPE-ANTIQUE line used for this restoration work were chosen on the basis of the results obtained from an analysis of sample pieces. Products with a high added value to perform work of excellence which stand out from all the other materials available on the market because, apart from having similar physical and chemical characteristics to the products originally used, they also have high

physical and chemical resistance to aggressive salts such as sulphates, chlorides and nitrates.

Article source: Realtà Mapei International no. 64/2017

For more information, email mapei@mapei.com.sg.

Mapei products

Masonry restoration: Silancolor Cleaner Plus, Consolidante 8020, Mape-Antique Allettamento, Antipluviol S



Architectural Heritage Awards (AHA) 2017 winners unveiled

The Urban Redevelopment Authority (URA) has conferred the Architectural Heritage Awards (AHA) 2017 on two building projects in Singapore. During the award ceremony held on 31 October 2017, Minister for Social and Family Development and Second Minister for National Development, Mr Desmond Lee presented the awards to "A" Queen Street, R.C. Cathedral of the Good Shepherd and 320 Havelock Road, The Warehouse Hotel. The 75 East Coast Road, Red House was also commended with a Special Mention.

2017 Award for Restoration

Project: "A" Queen Street, Cathedral of the Good Shepherd
Owner: Titular RC Archbishop of Singapore
Architect: Architects 61 Pte Ltd
Engineer: ECAS Consultants Pte Ltd
Contractor: Shanghai Chong Kee Furniture & Construction Pte Ltd
Conservation Specialist: Studio Lapis

A spirited revival

This national monument of historical interest in origins and architecture has been lovingly restored and returned for the appreciation and benefit of the congregation as well as the wider community.

Heritage grounds

For over 170 years, the passage of time took its toll on the church, both structurally and aesthetically. In this restoration, the team opted for maximum retention to keep the layers of history while bringing the facilities up-to-date. With a conservation specialist, an archaeologist, a pipe organ restorer and a stained glass restorer on board, best practices were adopted to restore the inherent heritage value and to reveal the rich stories in the centuries-old site. Backed by detailed research and analysis, the results glow with many treasured revivals.

Referencing the past

The existing building fabric was reinforced with fibre-reinforced polymer wrapping. For the East portico which unexpectedly collapsed, a steel structure clad with brickwork to meet current code, brought back the original profile. Elaborate underpinning works preceded reconstruction of the ground floor slab. The team also made use of the opportunity to conceal new Mechanical & Electrical services under the slab which allow air-conditioning units to be neatly hidden behind perimeter cabinets.

The Cathedral's original chequerboard pattern floor seen in historic photographs was reinstated. A lighter colour scheme that took reference from the original was adopted after careful examination of the multiple layers of paint coating. The Cathedral's stained glass windows, installed in the early 1900s, were carefully documented before dismantling for restoration at an off-site studio. Missing glass pieces from the windows were replicated and additional clear glass panels were installed behind the windows for protection.



"Blood and bandage" façade reinstated. Photo: © Urban Redevelopment Authority

Lights of glory

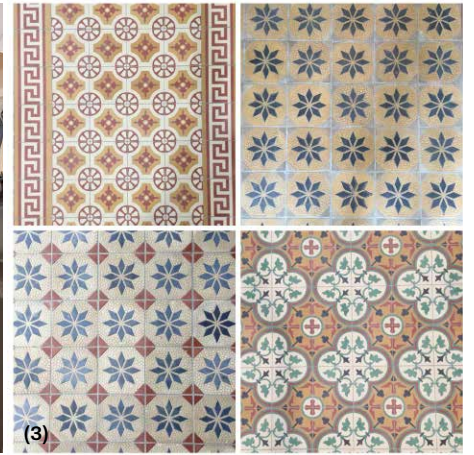
The glass panels of the pre-war mild-steel pivoted windows were also systematically tagged before removal for restoration. Of note is that the glass panels have different shades of green as a result of sporadic replacements over the years. The colour variation was kept and broken panels replaced with like-for-like pieces. The patchwork of shades gave the Cathedral a unique light quality while acknowledging the works of previous generations. Clear glass panels were also cleverly inserted into the openings between the



(1)



(2)

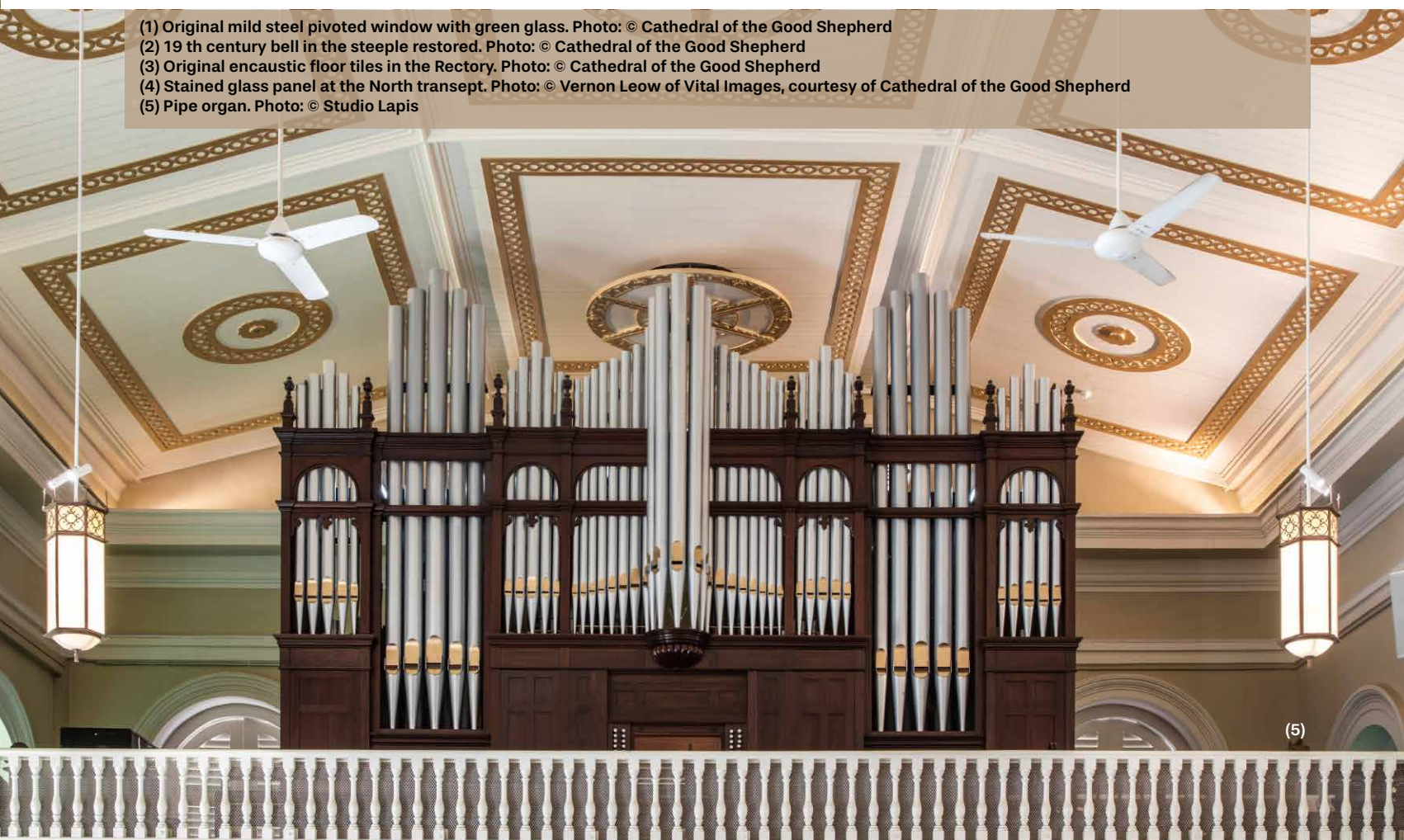


(3)



(4)

(1) Original mild steel pivoted window with green glass. Photo: © Cathedral of the Good Shepherd
 (2) 19 th century bell in the steeple restored. Photo: © Cathedral of the Good Shepherd
 (3) Original encaustic floor tiles in the Rectory. Photo: © Cathedral of the Good Shepherd
 (4) Stained glass panel at the North transept. Photo: © Vernon Leow of Vital Images, courtesy of Cathedral of the Good Shepherd
 (5) Pipe organ. Photo: © Studio Lapis



(5)



View of the nave from the choir loft. Photo: © Cathedral of the Good Shepherd

open pivoted panels so that natural light continue to stream into the newly air-conditioned interior.

Rising again

Described as a rare intact example of an Edwardian-style residential building, the Rectory displays a classic Edwardian architectural feature of alternating bands of red brickwork and white plaster, also known as "blood and bandage". Upon discovering that the colours had been reversed, the team painstakingly removed the white paint over the brickwork and the red paint over the plaster to reinstate its original finish.

The Rectory also houses the largest collection of intact encaustic floor tiles in Singapore. As these were in relatively good condition, they were carefully documented and removed for cleaning before being laid back in their original positions. Tiles that could not be saved were replaced.

Celebration of heritage

The construction of a new annex and a new basement have yielded additional space for the church to grow. A heritage gallery has been incorporated into the new annex. It tells the history of the church and showcases artefacts in the time capsule that was uncovered together with the church's foundation stone. A heritage ministry was also set up to enhance its outreach efforts through publications, onsite information boards and a docent programme.

More than a sacred historical landmark, the Cathedral is well known for its pipe organ music. It houses the oldest pipe organ in Singapore. This antiquated musical rarity, installed in 1912, was delicately dismantled and brought off-site for restoration. It continues to be instrumental in preserving the Cathedral's strong heritage of pipe organ music.

To safeguard this aspect of its heritage, the Cathedral has introduced initiatives such as the Organ Scholarship Programme for people who are interested to serve as organists.

Communal space

The Cathedral has been opening its doors to people from all walks of life, regardless of race or religion. Its premises and programmes contribute to bringing diverse communities together. The three-year major restoration project has successfully revived the Cathedral's position as a heritage asset and a beacon of the community for generations to come.



Main entrance of the Cathedral facing Queen Street. Photo: © Cathedral of the Good Shepherd

2017 Award for Restoration & Innovation

Project: 320 Havelock Road, The Warehouse Hotel
Owner: I Hotel Pte Ltd
Architect: Zarch Collaboratives Pte Ltd
Engineer: JS Tan Consultants Pte Ltd
Contractor: Towner Construction Pte Ltd

Checking in with a renewed purpose

This former warehouse along the Singapore River has been reborn as a boutique hotel. The heritage building now whisks guests to a bygone era of bustling trade activities of 1930s Singapore.



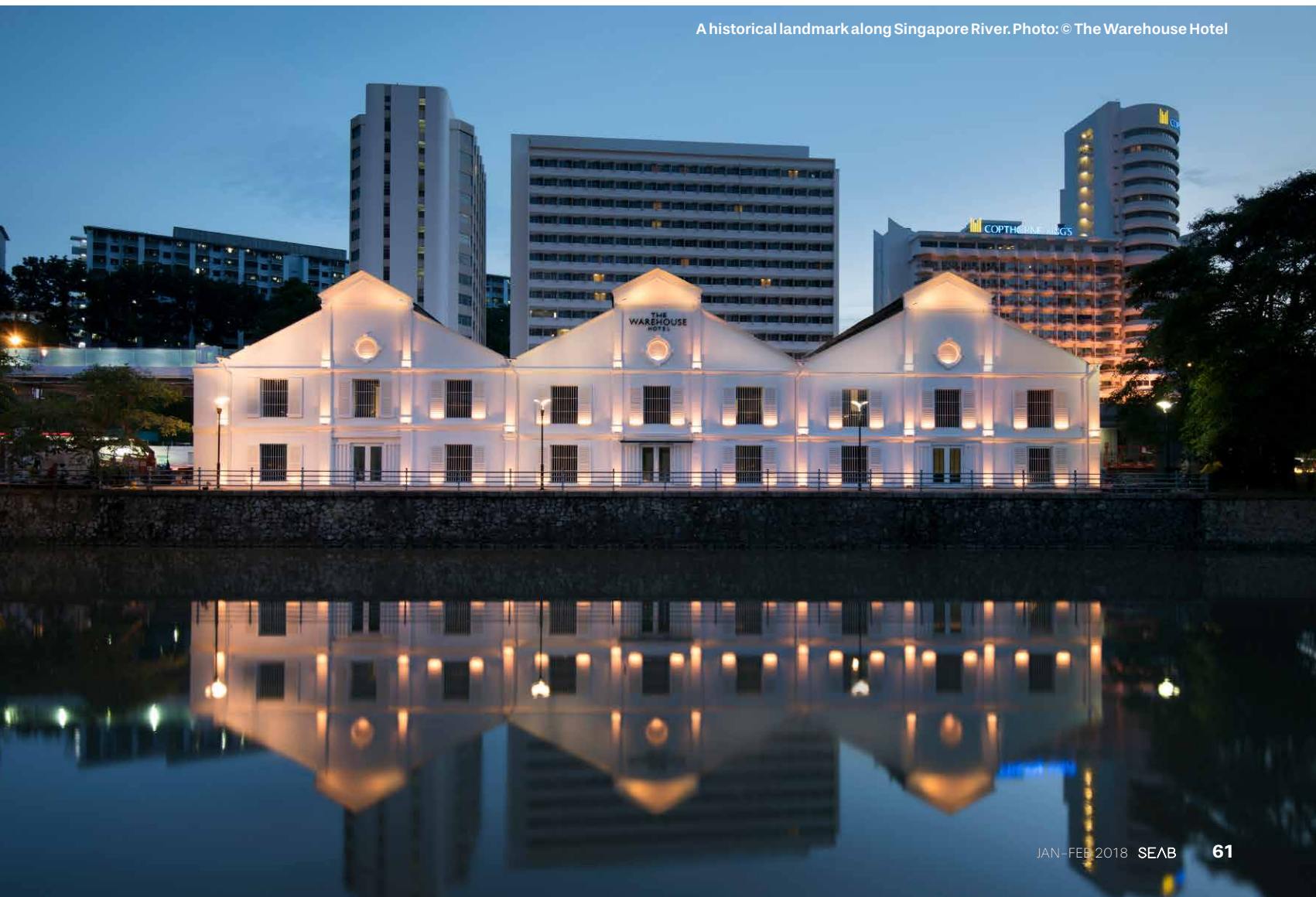
Timber louvred windows and metal security bars retained. Photo: © Asylum

Accommodating the past and present

Left empty for a long time, the three connected structures were in a dilapidated condition. Nevertheless, the team managed to revitalise them after thorough research and careful site investigation.

The character of the former warehouse has been retained while new interventions sensitively kept the spatial qualities. Original elements such as metal roof trusses were retained and new portal frames discreetly added to bear the new loading requirement for the roof. Jackroofs, a typical feature of warehouses were also retained. To bring natural light into the interior spaces, corrugated glass skylight panels similar in profile to the corrugated metal roof were introduced. Original vertical security bars of the windows were repaired and kept, but with an innovative touch to the frames so that some of the windows can double up as fire escapes.

A historical landmark along Singapore River. Photo: © The Warehouse Hotel



Organizers



Supporting Organization



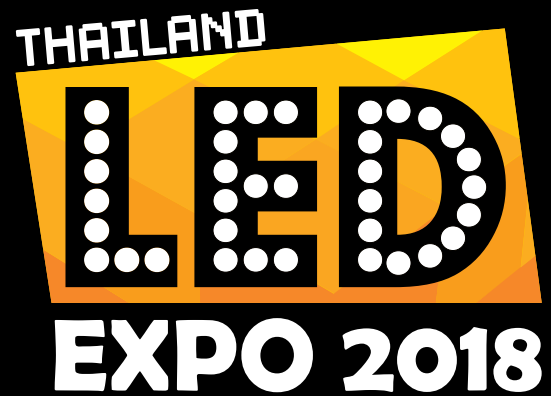
FUTURE OF LED

ASEAN's Largest
International Exhibition on
LED Products & Technology

**10-12
MAY, 2018**

CHALLENGER 1
IMPACT EXHIBITION & CONVENTION CENTER
BANGKOK, THAILAND

www.ledexpoThailand.com



**DO YOU WANT TO BE A LEADER
IN THE LED LIGHTING INDUSTRY IN THAILAND AND ASEAN?**

BOOK YOUR SPACE NOW!

ORGANIZERS



MEX Exhibitions Pvt. Ltd.
9 LGF, Sant Nagar, East of Kailash, New Delhi-110065, India
Ms. Himani Gulati Tel: +91-9312285142
E-mail: himani@mexexhibits.com
Mr. Gaurav Juneja Tel: +91-9810301644
E-mail: gaurav@mexexhibits.com



IMPACT Exhibition Management Co., Ltd.
Bangkok Land Building, 10 Floor, 47/569-576, Moo 3, Popular 3 Road,
Banmai Sub-district, Pakkred District, Nonthaburi 11120
Ms. Panvisut Buranakarn (Opal): Tel: +66 (0) 2833 5328, Email: panvisutb@impact.co.th
Ms. Wong Wing Yan: Tel: +66 (0) 2833 5013, Email: wingyanw@impact.co.th

Line ID : @ledexpo



LED Expo Thailand



Double volume space retained at the main lobby. Photo: © The Warehouse Hotel

Homage to heritage

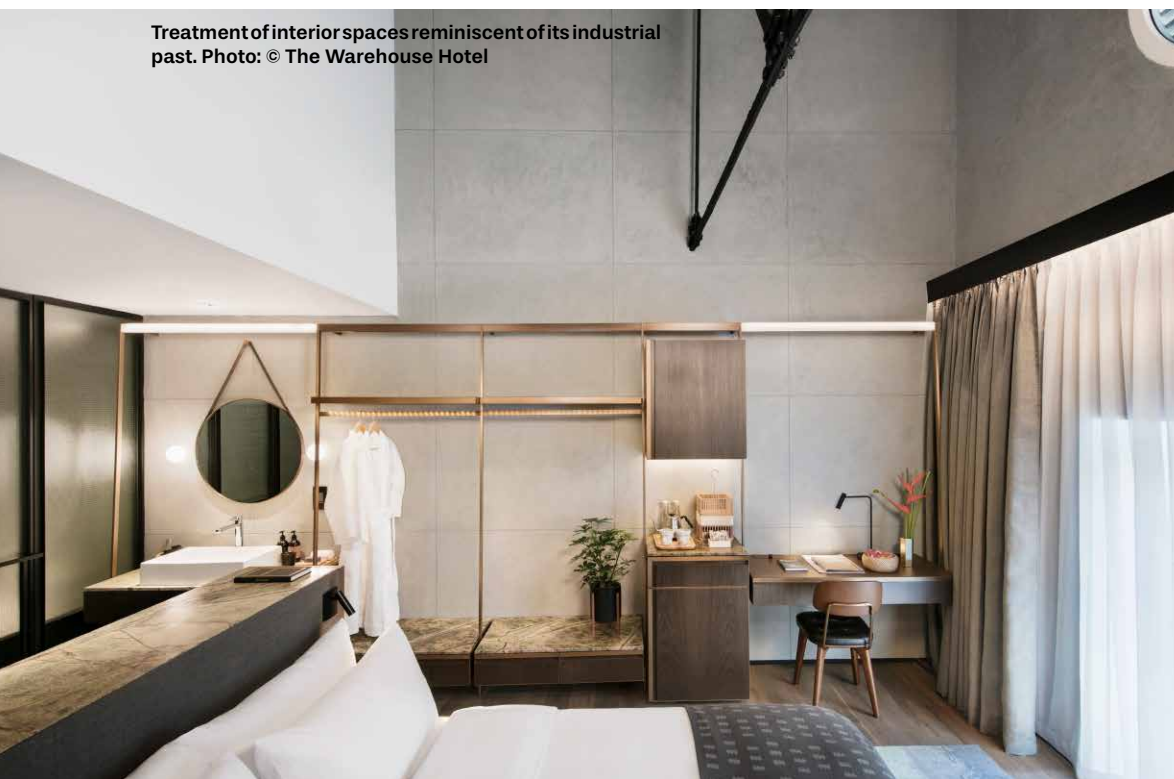
The lobby showcases the original double-volume space of the warehouse and provides an unobstructed view to the Singapore River. Within the space is a complement of fittings and furnishing like collapsible gates and pulleys that add to the sense of nostalgia. The design treatment of hospitality areas and guest rooms is also reminiscent of its industrial past. The use of solid metallic materials with industrial finishes and look ensure that a touch of the past prevails at every corner.

Evidence from old photographs and other archival materials also enabled the restoration of eroded features such as the Chinese characters on the façade. The documentation and sharing of the site's history through the hotel's collaterals, website and onsite storyboards reconnect the building back with the wider public.

Warehouse of memories

Through the thoughtful integration of old and new, and despite various site constraints, the team managed to bring out the heritage of the warehouse and the Singapore River while adapting the building to a new use.

Treatment of interior spaces reminiscent of its industrial past. Photo: © The Warehouse Hotel



Special Mention

Project: 75 East Coast Road, Red House
Owner: WRH Pte Ltd
Architect: SH Lim Architects Pte Ltd
Engineer: K P Chai Engineering & Management Consultants
Contractor: Tokyu Construction Co., Ltd.

Rising to a new day

This project is commended for the energy displayed in re-establishing some memorable and intangible elements of Katong's heritage.

Icing on the cake

The outcome is the result of the efforts of the owner to bring back a familiar piece of social heritage that was a part of Katong for almost a century. Today, the use in the Red House is reminiscent of the old Katong Bakery and Confectionery Co. Besides keeping the iconic red colour of the building, the owners deliberately set out to source for a new tenant who operates the same nature of business – a local café. The new café offers traditional local food items and its interior design took cues from the former.

Spreading the love

Substantial research was done to unearth the history of the building and the wider area. To properly capture the social memory of the building, the team tracked down a former staff who worked at the bakery to help provide a glimpse into its past. The research was then shared through storyboards installed along the five-foot way that documents stories about the building's history, the wider Katong area and its social role as a *wakaf* (endowment) to give back to society. The dedicated owners has kept alive the building's intangible heritage and today, the building remains relevant to the community. A slice of old Katong is, as they say, 'back in business'.



2017 Heritage Awards winners unveiled

Blue House Cluster, Hong Kong SAR, has won the Award of Excellence at the 2017 UNESCO Asia-Pacific Awards for Cultural Heritage Conservation. Other projects in Australia, China, India, Iran, New Zealand have also honoured in Asia-Pacific Awards for Cultural Heritage Conservation. All photos: © UNESCO Bangkok



The revitalisation of the working class "Blue House Cluster" in Hong Kong, China, has received the Award of Excellence in the 2017 UNESCO Asia-Pacific Awards for Cultural Heritage Conservation. 16 projects from six countries – Australia, China, India, Iran, New Zealand, and Singapore – were recognised in the 2017 Heritage Awards by an international panel of conservation experts.

"The Jury was impressed by the heroic nature of the conservation projects, especially those that underscore the importance of protecting heritage that is rooted in the least powerful segments of society," said Duong Bich Hanh, Chair of the Jury and Chief of UNESCO Bangkok's Culture Unit.

The jury citation for this year's Award of Excellence winner, the Blue House Cluster, three 20th-century shophouse blocks in

Hong Kong SAR, China described it as "a triumphant validation for a truly inclusive approach to urban conservation. A broad alliance, spanning from tenants to social workers and preservationists, waged a grassroots advocacy campaign to save the last remaining working-class community in the fast-gentrifying enclave of Wan Chai. This unprecedented civic effort to protect marginalised local heritage in one of the world's most high-pressure real estate markets is an inspiration for other embattled urban districts in the region and beyond."

The 2017 competition saw a surge in submissions for the New Design in Heritage Context category. Three projects, two from China and one from Iran, were recognised in this category, the highest number of winners since it was launched in 2005. The award recognises newly built structures that demonstrate outstanding design well



integrated into historic contexts.

The jury selected projects from 43 submissions, including 31 in the Conservation category and 12 for New Design. Other Awardees included:

Award of Distinction:

- Brookman and Moir Streets Precinct, Perth, Australia
- Holy Trinity Cathedral, Shanghai, China

Award of Merit:

- Christ Church, Mumbai, India
- Royal Bombay Opera House, Mumbai, India
- Sri Ranganathaswamy Temple, Srirangam, India
- Great Hall and Clock Tower Buildings, Arts Centre, Christchurch, New Zealand

Honourable Mention:

- Bomonjee Hormarjee Wadia Fountain and Clock Tower, Mumbai, India
- Gateways of Gohad Fort, Gohad, India
- Haveli Dharampura, Delhi, India
- Wellington Fountain, Mumbai, India
- Aftab Cultural House, Isfahan, Iran
- Cathedral of the Good Shepherd and Rectory Building, Singapore

New Design in Heritage Contexts:

- Jingdezhen Ceramic Industry Museum, Jingdezhen, China

- Macha Village, Gansu Province, China
- Persian Gulf University – Faculty of Art & Architecture, Bulshehr, Iran

The UNESCO Asia-Pacific Awards for Cultural Heritage Conservation programme recognises the efforts of private individuals and organisations that have successfully restored and conserved structures and buildings of heritage value in the region. By recognising private efforts to restore and adapt historic properties the awards aim to encourage other property owners to undertake conservation projects within their communities, either independently or by seeking public-private partnerships.

Awarded projects reflect a clear understanding and application of various criteria, such as the articulation of the spirit of place, technical achievement, appropriate use or adaption, and the project's contribution to the surrounding environment as well as the local community's cultural and historical continuity.

Eligible projects must have been completed within the past 10 years. Buildings with a new use must have also been in viable use for at least one year from the date of the awards announcement. Starting in 2017, the eligibility criteria for minimum age of heritage properties has been eliminated to reflect growing awareness in the field of conservation the importance of recognising contemporary cultural heritage.



Award of Excellence

Project name: Blue House Cluster
Location: Hong Kong SAR, China

The revitalisation of the Blue House cluster provides triumphant validation for a truly inclusive approach to urban conservation. A broad alliance spanning from tenants to social workers and preservationists waged a grassroots advocacy campaign to save the last remaining working-class community in the fast-gentrifying enclave of Wan Chai, which was threatened by demolition and wholesale redevelopment. Succeeding against all odds, their impassioned efforts and innovative participatory programmes have safeguarded not only the architecture, but also the living history and culture of a neighbourhood, which is rooted in a formative chapter of Hong Kong's past. The three dilapidated 20th-century shophouse blocks were deftly restored for contemporary use and upgraded with modern facilities. At the heart of the project were the residents, who stayed on-site for the duration of the construction activities by special arrangement, ensuring minimum disruption to their lives as well as their full involvement throughout the process. This unprecedented civic effort to protect marginalised local heritage in one of the world's most high-pressure real estate markets is an inspiration for other embattled urban districts in the region and beyond.



Photo: © UNESCO Bangkok

Photo: © UNESCO Bangkok

Award of Distinction

Project name: Brookman and Moir Streets Precinct
Location: Perth, Australia

The restoration of late 19th-century workers' cottages along Brookman and Moir Streets has thoughtfully revived a modest but historically significant housing district dating back to the Western Australian gold boom. Individual homeowners undertook the loving refurbishment of the simple Federation Queen Anne semi-detached dwellings which had suffered from years of unsympathetic change and dilapidation. With financial support from the City of Vincent and the local Heritage Council and technical guidance from conservation professionals, the original architectural character and material palette of each red brick building was carefully recovered. Catalysed by the renovation of a single house which then inspired other nearby residents, the project has revitalised the streetscape and returned a sense of community to the area. The revival of the Brookman-Moir precinct underscores the importance of recognising and safeguarding everyday urban fabric as part of a holistic strategy in sustaining historic urban landscapes.





Project name: Holy Trinity Cathedral
Location: Shanghai, China

The exceptionally accurate and technically proficient restoration of the Holy Trinity Cathedral has revived the oldest Anglican Church in China and successfully re-established one of Shanghai's most iconic historic landmarks. Extensive repairs and the judicious removal of unsightly modern accretions recovered the original dignity and grandeur of the Gothic Revival monument designed by prominent 19th-century architect, Sir George Gilbert Scott. Meticulous craftsmanship was applied to restoring the structure and lost decorative works, notably the stained glass windows. The rebuilding of the clock tower re-establishes a distinctive icon that once anchored the city's historic skyline. The reinstatement of its soaring interiors and distinctive polychrome brickwork provides a fitting backdrop for sacred use of the cathedral by a modern-day congregation.

Photo: © UNESCO Bangkok

Award of Merit

Project name: Christ Church
Location: Mumbai, India

The conservation of the 19th-century Christ Church has recaptured the original character of a fine and rare example of Neo-classical churches in Mumbai. One of the city's oldest public buildings, the church had suffered from earlier inappropriate repair works that disguised and diminished its cultural value. Following careful investigations, past interventions were selectively reversed and the continuing function of the church was enhanced. Artisan skills were revived during the renewal of the elegant interior with its gilded columns, memorial stained glass windows and lath and plaster ceiling. Funded by the Christ Church Trust, the restoration of this church highlights the architectural history of the neighbourhood and serves as a model to encourage further conservation of Mumbai's built heritage.



Photo: © UNESCO Bangkok

Project name: Royal Bombay Opera House
Location: Mumbai, India

Under generous private patronage, the heroic rescue of the Royal Bombay Opera House from the verge of collapse has revived the beloved cultural venue as a gift to the city of Mumbai. Once hailed as “the finest theatre in the East”, the century-old building had been subjected to a series of unsympathetic renovations during its stint as a cinema before its eventual closure and abandonment. With guidance from dedicated specialists, the project demonstrates great technical competence in overcoming severe structural distress, restoring decorative features and improving acoustics, all the while maintaining spatial integrity and authenticity. The comprehensive restoration, undertaken with meticulous research and quality workmanship, successfully revived not only the theatre’s magnificent Neo-Baroque architecture but also the spirit of place of the only surviving opera house in India, which now once again can reclaim the proud title of being one of the “finest theatres in the East.”



Photo: © UNESCO Bangkok

Project name: Sri Ranganathaswamy Temple
Location: Srirangam, India

Undertaken through a major public-private initiative, the conservation of the Sri Ranganathaswamy Temple has revived the extensive religious complex at the core of Srirangam temple town. The project has revealed the original fabric of the shrines, water bodies and landscape within the temple’s four inner enclosures, which were once obscured under layers of inappropriate modern additions and tons of debris. Employing traditional construction materials and techniques, the restoration work was carried out in an authentic manner by local craftspeople in accordance with ancient building principles and rites. The technical team effectively overcame the perennial flooding problem through the re-establishment of the historic water harvesting and drainage system. The temple today attracts great attention among its devotees and supporters, whose renewed sense of pride and custodianship will ensure its long-term sustainability.

Photo: © UNESCO Bangkok

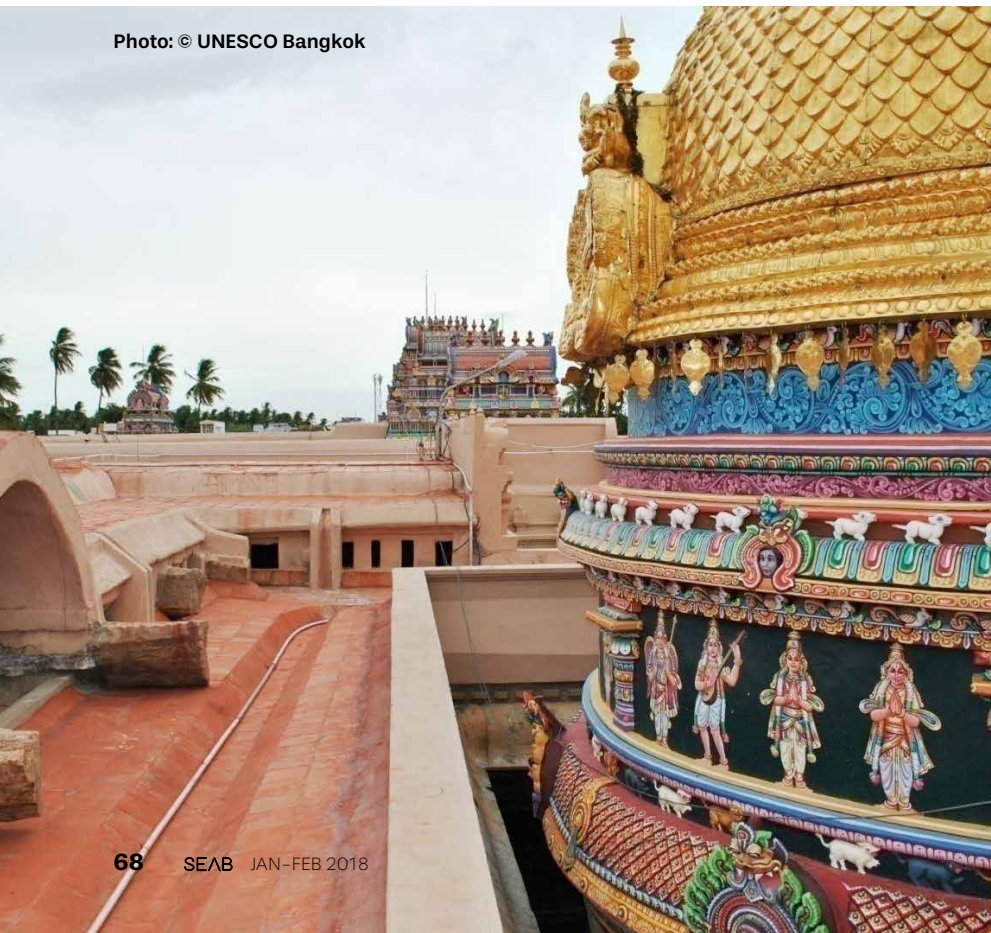




Photo: © UNESCO Bangkok

Project name: Great Hall and Clock Tower Buildings, Arts Centre
Location: Christchurch, New Zealand

The restoration of the Great Hall and Clock Tower of the Arts Centre in the heart of Christchurch celebrates a memorable step towards the city's recovery following the devastating earthquakes of 2010 and 2011. Suffering major damage, the Gothic Revival masonry structures underwent a sophisticated regime of seismic strengthening and retrofitting, along with painstaking reconstruction of significant heritage features such as the turret and stained glass windows. Modern facilities and services were discreetly inserted to enhance the contemporary functionality of the buildings. The resurrection of the Great Hall and Clock Tower has returned a major historic landmark back to the public, which now continues to serve as a social, educational and cultural hub in the community.

Honourable Mention

Project name: Bomonjee Hormarjee Wadia Fountain and Clock Tower
Location: Mumbai, India

Located at an important node of the city, the restored Bomonjee Hormarjee Wadia Fountain and Clock demonstrates the success of a pioneering public-private partnership to valorise public amenities in Mumbai. Associated with the local Zoroastrian community, this unique architectural landmark was saved from the verge of collapse by the timely efforts of the city government with support from the Kala Ghoda Association. Using a non-invasive approach, the project undertook structural strengthening, repair of decorative features and returned the vandalized clock to working order. This remarkable 19th-century drinking water fountain and clock tower once again stands as a proud symbol of civic pride.



Photo: © UNESCO Bangkok

Project name: Gateways of Gohad Fort
Location: Gohad, India

The conservation of *Hathai Paur* (Elephant Gate) and *Sankal Darwaja* (Chain Gate) has reinstated a significant feature of the 15th-century Gohad Fort and enhanced the surrounding townscape. Still in daily use by the local residents, the partially collapsed east and west gateways were repaired on an emergency basis in a modest and technically competent manner. Detailed documentation and analysis informed the recreation of the arches and the consolidation of the severely deteriorated brick and stonework. The productive public-private collaboration involving the heritage authorities and local government has enhanced the heritage value and functionality of a historic asset of local significance.



Photo: © UNESCO Bangkok



Photo: © UNESCO Bangkok

Project name: Haveli Dharampura
Location: Delhi, India

The conservation of Haveli Dharampura rescued an extraordinary 19th-century residence in old Delhi from years of unsuitable interventions and adapted it for contemporary use as a luxe boutique hotel. The *haveli's* original spatial configuration was re-established and ornate architectural elements were carefully restored, returning the building to its former splendour. High-quality workmanship ensured the authentic preservation of the Moghul-era architecture, with dozens of dedicated craftspeople employing traditional materials and construction techniques alongside sensitive modern interventions. A solely private initiative of the Heritage India Foundation, this successful project serves as an inspiration for restoring other historic *havelis* in the old city, thus contributing to its patron's long-term vision to revitalise Shahajanabad in all dimensions.



Photo: © UNESCO Bangkok

Project name: Wellington Fountain
Location: Mumbai, India

The restoration of the Wellington Fountain demonstrates the importance of extending heritage protection efforts to the public realm. Employing the same rigorous methodology and scientific technology applied to the restoration of monumental buildings, the project has competently preserved the city's only functional ornamental water fountain by stripping away later additions. Prominently located in the Fort precinct, the historic structure contributes significantly to enhancing the 19th-century urban landscape of Mumbai. The project is a notable step forward in strengthening the understanding and commitment for appropriate management of municipality's civic heritage.

Project name: Aftab Cultural House
Location: Isfahan, Iran

The project has dramatically transformed a deserted Qajar-dynasty house used to shelter sheep into a popular cultural hub. Through private initiative, the project closely engaged the community throughout the conservation process. Traditional materials were used to repair the deteriorated adobe structure, with the visual highlight being the colourful mosaic of hand-made tiles adorning the roof and courtyard. Under an all-female management council, the building today houses a library, cafe and cultural venue. Modest in scale but with significant local impact, the Aftab Cultural House imaginatively demonstrates the viability of adapting heritage buildings to sustain and enhance cultural continuity.

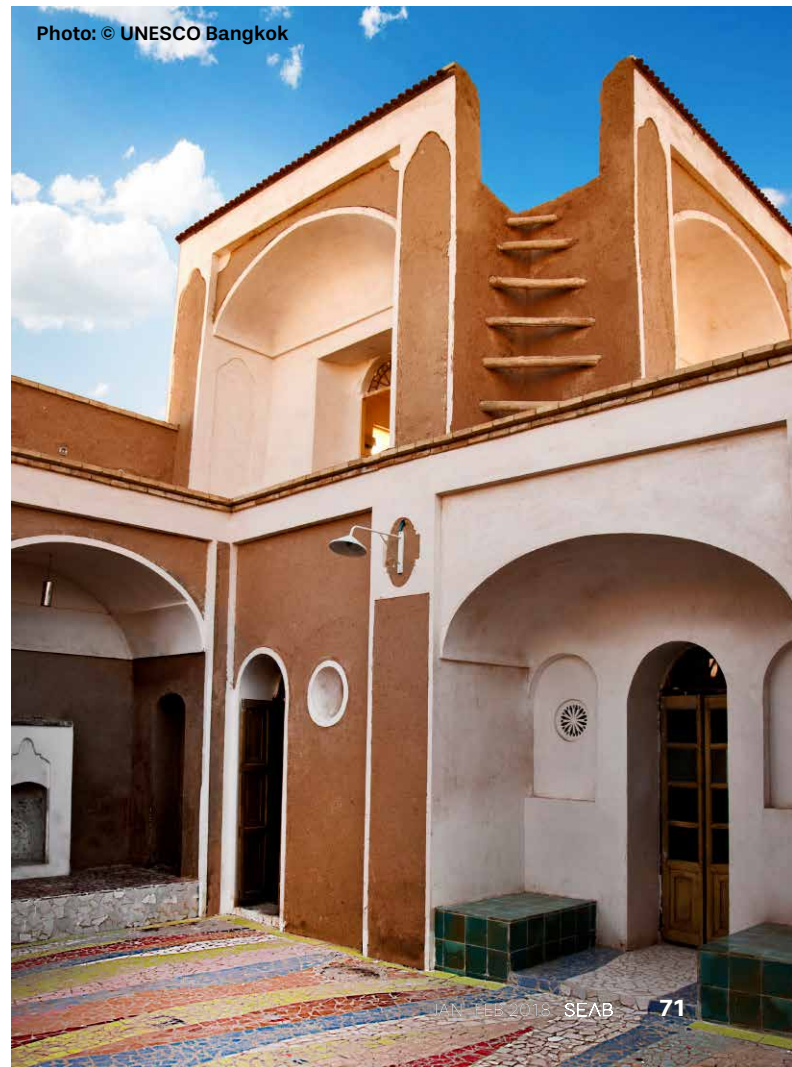


Photo: © UNESCO Bangkok



Photo: © UNESCO Bangkok

Project name: Cathedral of the Good Shepherd and Rectory Building
Location: Singapore

The restoration of the Cathedral of the Good Shepherd and Rectory Building embraces and enhances the historic character of the oldest Roman Catholic Church in Singapore while upgrading its functionality to meet contemporary requirements. Demonstrating meticulous conservation planning and thorough community consultation processes, the well-executed interventions involved underpinning the weakened foundation, repairing historic finishes and decorations, installing non-intrusive modern services and construction of additional facilities. Largely undertaken through a private fundraising effort, the project successfully conserved a significant heritage building for the Catholic population of Singapore, while generating a heightened appreciation for heritage among the public at large.

Award for New Design in Heritage Contexts

Project name: Jingdezhen Ceramic Industry Museum
Location: Jingdezhen, China

The transformation of the 1950s Cosmic Porcelain Factory into a museum and mixed-use facility showcases Jingdezhen's fame as a world-renowned ceramic production centre and opens up the former factory space for broad public use. Based on the principle of minimal intervention, the choice of a streamlined modern industrial aesthetic responds to the mid-twentieth century industrial architecture of the historic factory building, providing a muted backdrop that allows the kiln remains to take the spotlight. The contemporary materials palette creates a dramatic counterpoint to the original brick structures. The new design respects the form and scale of the former factory and creates innovative opportunities to interact with the famous ceramic production facilities.

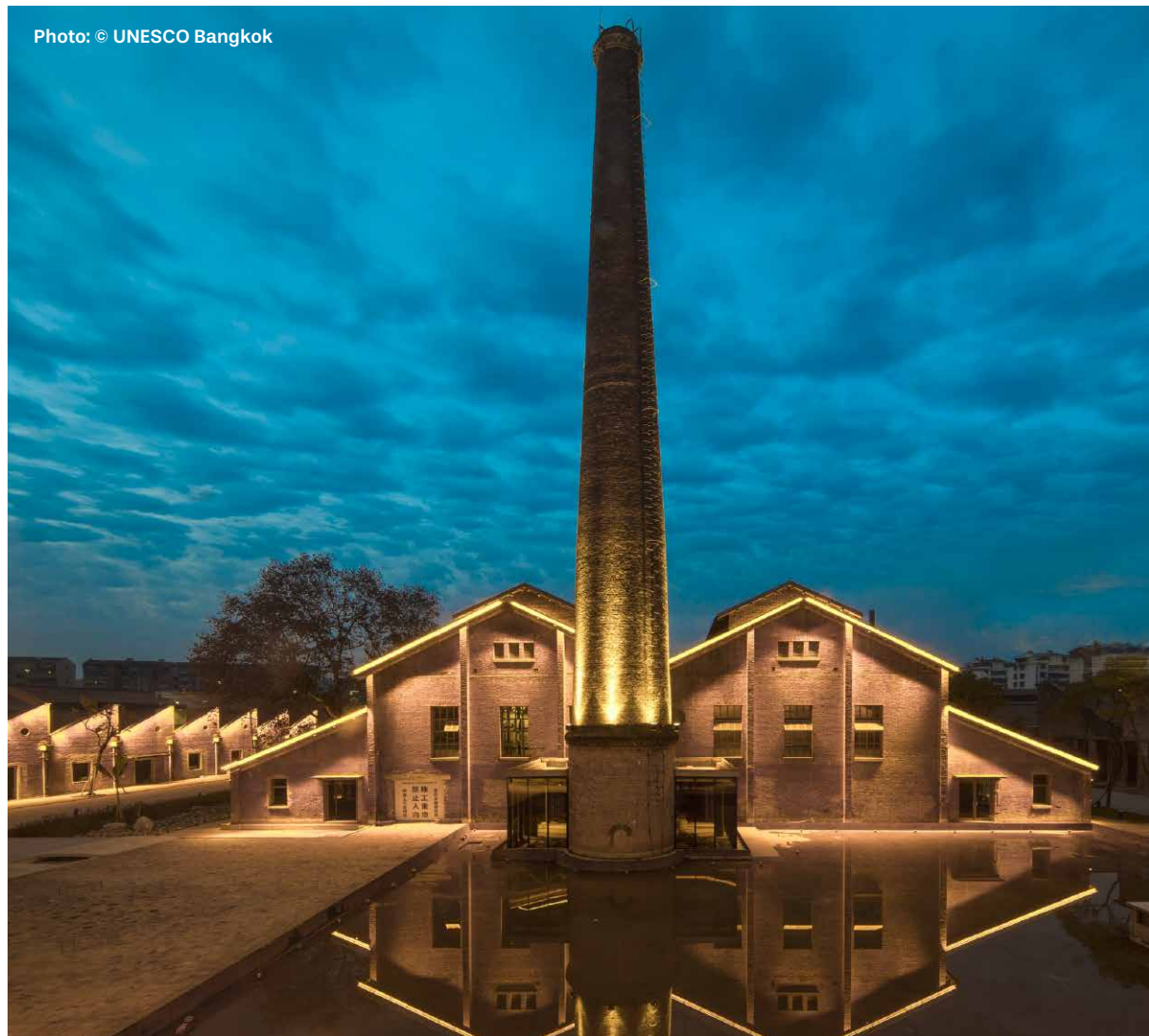


Photo: © UNESCO Bangkok

Project name: Macha Village
Location: Gansu Province, China

The Macha Village project valorises vernacular rammed-earth building technologies and validates their continuing appropriateness for current-day use. The construction of 28 prototype dwellings and a community centre built by local residents in cooperation with volunteers has very effectively overcome concerns about the image, comfort and durability of the vernacular buildings. By adapting traditional techniques of construction to meet modern standards of building performance and seismic safety, the quality of life of the villagers has been enhanced. The project is a model for rural dwelling construction, which is affordable, sustainable and ecologically friendly.



Photo: © UNESCO Bangkok

Photo: © UNESCO Bangkok

Project name: Persian Gulf University – Faculty of Art & Architecture
Location: Bushehr Province, Iran

The new Faculty of Art & Architecture building of the Persian Gulf University responds to an urban design challenge with a contextual solution that demonstrates a sound understanding of the vernacular architectural typology. Located at the edge of the historic district of Bushehr, the new building maintains continuity with the existing urban morphology, with its compatible scale, façade treatment and selection of materials. By configuring the building around landscaped courtyards, the project creates an oasis for the university community using traditional environmental management techniques. The new design maintains a distinctive but respectful presence vis-à-vis the restored historic "Nozari House" and other adjacent buildings. The project offers a noteworthy model for contemporary architecture that embodies the regional *genius loci*.



And the prize for the **Green Architect of the Year** goes to...

SEAB profiles the winners of the Green Architect of the Year award.

At the SGBC-BCA Sustainability Leadership Awards 2017 held at the Grand Copthorne Waterfront Hotel on 8 September 2017 in Singapore, two industry professionals received the Green Architect of the Year award. They are Ar. Khoo Poh Bin, Deputy Managing Director, DCA Architects Pte Ltd and Ar. Kuan Chee Yung, Senior Vice

President, Architectural Division, CPG Consultants Pte Ltd.

In the next few pages, we bring you an interview segment with the architects on how they started their career, the challenges that they faced, projects that they have worked upon and their future goals.



Ar. Khoo Poh Bin



Ar. Kuan Chee Yung

Ar. Khoo Poh Bin, Deputy Managing Director, DCA Architects Pte Ltd



Q: Congratulations on receiving the 'Green Architect of the Year' title from the SGBC-BCA Sustainability Leadership Awards 2017. How important is this award for you?

Sustainable architecture is just one part of the green movement, and it has been an enriching experience to participate in the SGBC-BCA Sustainability Leadership Awards.

In our city-state, we are fortunate to have leaders with the foresight to make the "garden city" vision a reality, and also the opportunities to take on the urban challenges ahead of us. In the context of fast moving developments in technology and sustainability, it is inspiring to have peers in the built environment recognised for advocating and embracing integrated and innovative green solutions. All levels of our city-state stand to benefit from more sustainable urban development models for others to follow.

As such this award more importantly serves as an encouragement in recognising the efforts of all in the building industry to improve urban life in Singapore and provides an ideal platform for sharing of experiences and insights to further spread sustainable awareness towards achieving a clean and healthy environment.

Q: What inspired you to become an architect and can you tell us the journey of your career so far?

As a child I have been interested in drawing and art in the various mediums as it gave me an outlet to express my thoughts and imagination visually. This together with my curiosity on how things come together furthered my progression into a career in Architecture. It seemed natural, fulfilling my desire to combine creativity with practicality and problem solving.

In my early architecture education, I was inspired by the innovative approach of how indigenous buildings adapt to climatic conditions with the use of locally available materials. As a fresh graduate in practice, I came to see these as sustainable visions for the future that can be realised through implementation in a contemporary



One George Street
in Singapore.
Photo: © DCA
Architects

context. Furthermore, as individuals, each of us have the ability to influence and contribute to the environment. I wanted to enhance the sustainability aspect of the projects I was involved in and this became my conscious objective.

When BCA embarked on their sustainability drive, it was an opportunity to contribute by taking part actively in the development of a sustainable template which led to the launch of BCA Green Mark in 2005. The sustainable efforts were subsequently recognised through many projects that I was involved in across several building typologies such as residential, commercial, transportation hub, institutional and mixed use developments such as *Mapletree Business City II*, *Bedok Mall*, *Bedok Residences*, *Bedok Bus Interchange* as well as *Nanyang Technological University – Learning Hub North* where the projects obtained BCA's Platinum Awards.

Q: You are a firm believer and a pioneer of green architecture. What role does sustainability play in your work?

Green architecture seeks to minimise the negative environmental impact of buildings through efficacy of design such as moderation in the use of materials, energy, development space and the ecosystem at large. Sustainable architecture uses a conscious approach to energy and ecological conservation in the design of the built environment and this is very much aligned with my endeavours to contribute in my capacity as an Architect.

It is a continuing journey designing with eco-friendly building materials and construction practices, while making it cost-effective for the client. We have to play our part in building a sustainable urban environment not just through action but also through continuous learning and also sharing knowledge with others.

My focus now is to pursue sustainability efforts through the adoption of new technologies, such as Building Information Modelling through simulations at design stage to facilities management where the results can be measured in a tangible manner. It has become the means to convey and inculcate the benefits of sustainability to the younger generation of architects in a digital medium they are familiar with, so that they may further explore and continue to develop green design towards a sustainable future.

Q: When designing green buildings, what is the greatest challenge that you face?

Green buildings are the future for city development, but most designers and architects still face challenges in realising these changes. Thanks to the efforts of BCA and SGBC, mindsets are shifting towards environmentally friendly practices. For developers and stakeholders, financing the research, balancing the provision of services, and making the buildings investor-friendly is gaining traction, as end-users see the benefits of green features in terms of energy and water savings, without sacrificing comfort. We continue to advocate the cause and share our findings through seminars and conferences to orient practices and policies towards a more sustainable built environment.

Q: You have worked on numerous projects based all over the world ranging from Asia to Europe. Which projects are you proud of and why?

I am proud of all the projects we are involved in as a practice and in particular *One George Street* in Singapore as it was where I had the opportunity to test the sustainable parameters working closely with BCA when they were formulating the templates for the Green Mark scheme. Working closely with URA as well, the project was the focus in power sessions with the industry to adopt new guidelines to promote the introduction of sky gardens. It was subsequently incorporated in the LUSH programme in the efforts to make Singapore a "City in a Garden" to enhance quality of life. The building was recognised for its efficient energy consumption and was accorded ASEAN Energy Awards Best Practice for Energy Efficient Building category in 2006.

Q: As a strong advocate of BIM and other various simulation softwares to create architectural design, how have these tools enhanced your own design process?

BIM is instrumental in developing innovative design solutions, given the increasingly diverse and complicated site conditions in our densely populated urban environment. Combining BIM tools, such as Autodesk Revit Architecture and Navisworks in the construction documents phase, helps us to identify and correct potential problems among the different design and engineering disciplines early

on. When such architectural models are combined with M&E and structural models to create an integrated model where all parts of a building come together virtually, we save time and effort coordinating ahead of construction.

More importantly, BIM models can be further developed for the purpose of facilities management (6D BIM) and sustainable analysis (7D BIM). It can also compute Green and Sustainable quantum of the building using templates created e.g. to establish the amount of sustainable materials used, energy modelling, daylighting, natural ventilation and so on with the use of Ecotect, Vasari and other softwares to conduct simulations and preliminary climatic analysis such as CFD.

The ability to perform "green building" simulations, through studies of environmental parameters, such as wind-driven rain penetration, speeds up the design process and allows us to achieve higher levels of user comfort and safety in our design. The effectiveness of our design can be tested virtually in a wide of weather conditions so we can anticipate needs and update the blueprints for highly sustainable and buildable buildings.

Q: Asia and the other parts of the world are already progressing towards a more sustainable future by embracing green building practices. How do you feel about this trend?



Nanyang Technological University – Learning Hub North in Singapore. Photo: © DCA Architects

Urban populations and levels of urbanisation are increasing throughout Asia and the world, accounting for economic growth as well as challenges in pollution control and standards of living. For more developed countries, it is important to lead the way in formalising new standards in urban health through green building practices such as efficient use of resources for lighting and sanitation, the integration of greenery and spaces for social interaction, and use of safe recycled building materials. I feel that green buildings inspired by traditional vernacular architecture is tremendously useful for producing designs that are practical and cost-effective. Communities should maintain a link to their heritage to preserve their culture, while each step taken toward enhancing the efficiency and health of the built environment ensures a better future for the next generation.

Q: Can you share with us some of your on-going projects?

Our current ongoing projects such as *NTU - Learning Hub North, 79 Robinson Road*, and the new *PSA HQ*, a livable SMART building for PSA International, are avenues for us to continue our efforts in sustainable design with supportive client involvement in sustainable design.

Q: What advice would you give to someone who wants to pursue a career in architecture?

It is a responsibility to be able to participate directly in the transformation of the environment. However it comes with a unique set of challenges. The skill and knowledge needed to become an architect is all encompassing. The nature of the job is demanding, in terms of problem-solving, managing and navigating between

different stakeholders with different requirements are counterpoints to design. Nonetheless, it is part of the process and taps on creativity as a means to resolve issues and to bring the project together as the lead consultant. I believe that the young with a passion and drive to learn, adapt and improve themselves will enjoy a career in Architecture.

Q: What goals have you set for the next five years? What kind of work do you want to accomplish?

The goal is to nurture the next generation in our office and to bring them up as Architects and working together to continue shaping and improve the urban environment we live in through exploration and research in the interrelated fields of urbanism, architecture and design.



Ar. Kuan Chee Yung, Senior Vice President, Architectural Division, CPG Consultants Pte Ltd



Q: Congratulations on receiving the 'Green Architect of the Year' title from the SGBC-BCA Sustainability Leadership Awards 2017. How important is this award for you?

This award is of great significance to me as it marks another milestone in my career having previously won design & property awards for my projects. The fact that I submitted based on my ideas & contributions in integrated design, biophilia and social capital building in order to achieve re-generative design over and above sustainable design means that SGBC-BCA recognises the next step in sustainability. At company level, this is the second Green Architect of the Year award won by CPG Consultants. This demonstrates that we at CPG are 'green' as a core company philosophy and sustainability is part of every project we design and implement.

Q: What inspired you to become an architect and can you tell us the journey of your career so far?

I had the opportunity to pursue A-Levels in Singapore under the PSC ASEAN JC scholarship to hopefully study triple

sciences that lead to Medicine. However, I found out that while I had great interest in biology and healing people, I had innate talent in imagining spaces and places; in short I can imagine & make buildings feel 'alive'. Moreover, I can design for hours on end and be 'in the zone' without undue stress. I suppose these self-discovered attributes led me to architecture. But the story does not end with studying & practicing architecture as I eventually designed for and saw the development of the first two medical schools in Singapore, that is, DUKE-NUS GMS NUS and Yong Loo Lin School of Medicine (YLLSOM) which are not only green buildings but YLLSOM is now the best medical school in Asia. Architecture is such a broad discipline that one can eventually follow the same 'interest' path, just via a different route. Similarly, I am now moving beyond 'buildings that heal' to designing environments that emphasise on biophilia ie loving nature, as I do love flora & fauna and dream of a time humans can co-exist with highly bio-diverse ecosystems. Hopefully, these new designs will evolve architecture, integrated landscape and eco-master plans to another level.

Q: You are a firm believer and a pioneer of green architecture. What role does sustainability play in your work?

Sustainability is the foundation of my practice. We begin with sensitivity to site and understanding the cultural & eco-system aspects that must be conserved and qualities that can be developed into a special development team's 'purpose' & brand identity. This 'purpose' of the development inevitably has a strong sustainable agenda and is often expressed through the design aesthetics and brand identity. We call this approach PlaceCORE, which was jointly developed with homegrown international Branding & HR Expert, Consulius.

By using a more holistic approach like PlaceCORE, we constantly push at the boundaries of what is traditionally understood as sustainable design. I am a great proponent of developing the correct attitude and knowledge-base of people so that we understand and value our environment. In essence, we build places for smart people that can co-create a sustainable and smart environment.

Q: When designing green buildings, what is the greatest challenge that you face?

The key setback of green buildings is the 'pay forward' factor of investing first for future gain. This can be in the form of high performance & shared amenities design, materials and building systems plus integrated landscapes that eventually evolve into natural eco-systems. However, we cannot expect immediate payback, and users of the buildings also need to be champions of a new 'sharing and sustainable' culture as user behavior can contribute to much higher resources savings. To make such an idea successful, I need to create a project environment with a lot of buy-in from all parties for the entire life cycle of the developments, something



Supertrees at Gardens by the Bay. Photo: © CPG

easier said than done.

Q: You have worked on numerous projects based all over the world ranging from Asia to Europe. Which projects are you proud of and why?

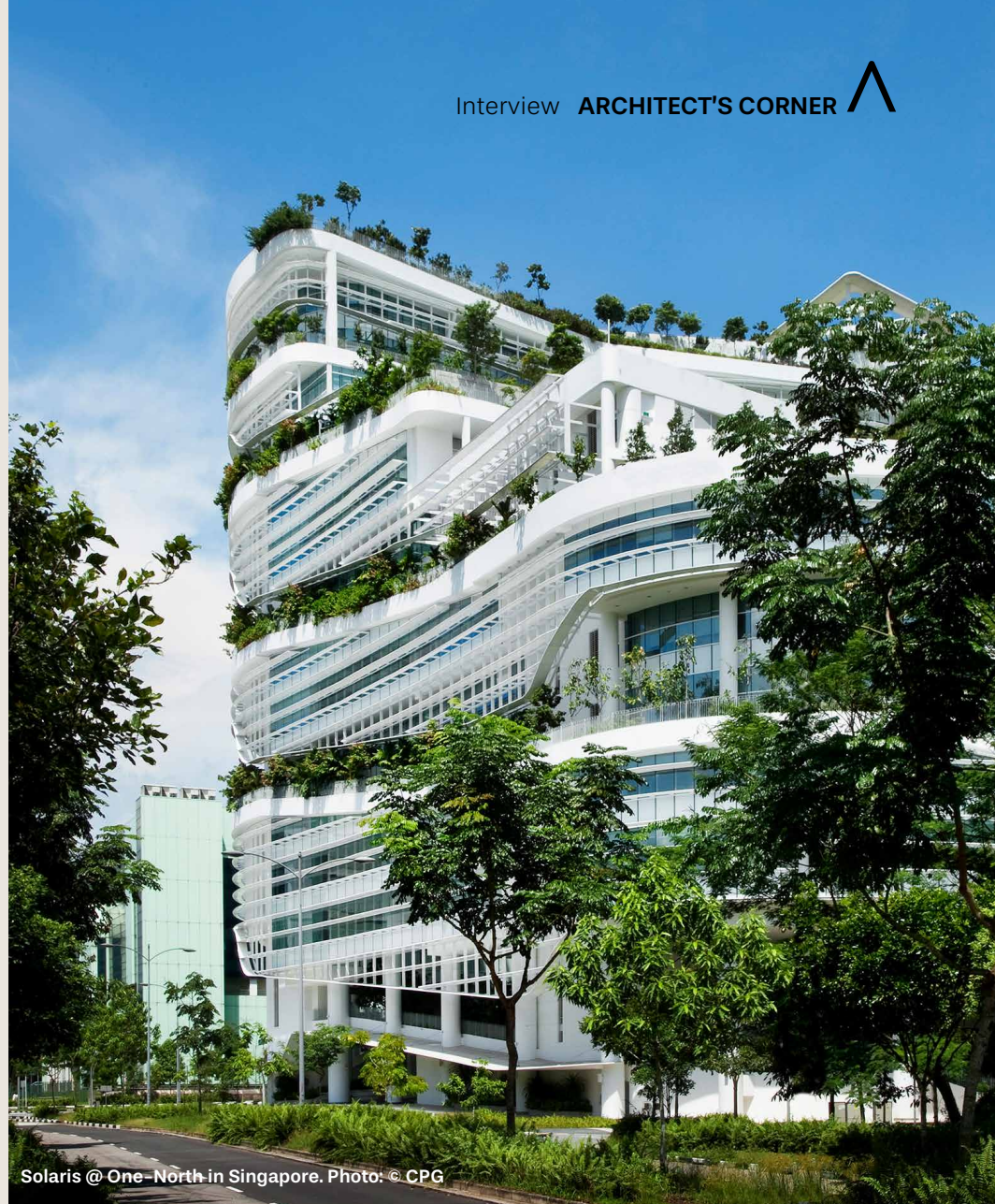
I am especially proud of my projects with the top developer in Malaysia, EcoWorld, as I was very much part of the developer's identity and 'purpose' development. We created many 'home in nature' townships that many dream of living and feedback from occupants has been incredibly encouraging.

Q: As a strong advocate of BIM and other various simulation softwares to create architectural design, how have these tools enhanced your own design process?

BIM as tool allows us the design in the virtual space and test its impact on the environment and performance at every stage of design plus determine development aspects like cost, overall look etc. The question every Green Architect should ask ourselves is whether we need to build on the limited land we have and by simulating in BIM, we can arrive at the best answer without affecting a blade of grass. What is more interesting in BIM is that we have to study useable designs and sustainable processes to able to input real data into the system & simulations. It has sharpened my understanding of multi-use design, details, specifications, construction processes and building systems. This holistic understanding is important to create the new Virtual Designer.

Q: Asia and the other parts of the world are already progressing towards a more sustainable future by embracing green building practices. How do you feel about this trend?

Asia is fortunate to have a few years of youthful energy to build on the ideas of the sustainability movement and leap-frog 'mistakes' of earlier developments. Asia is also the largest tropical urbanism project where rapid urban growth is matched with the need to conserve our verdant greenery and highly diverse ecological systems. Dense vertical greenery, clean transportation systems, urban food production & the art of foraging to discover new foods & use for natural flora plus modern highly sustainable circular economies are all very topical & tropical



Solaris @ One-North in Singapore. Photo: © CPG

ideas that will transform how we design, develop & live well in the Asian Century.

Q: Can you share with us some of your on-going projects?

I cannot reveal the names of the developments as they are being designed as we speak but the CPG teams I lead are actively involved in place-making developments all over Asia that create specialised townships with circular economies that create identity, benefit many and waste little. We are also creating more naturalistic & nature linked Ecotopes and fewer gardens as we look for a new landscape aesthetic. Even our structures are becoming 'bio-structures ie scaffolds for growth' instead of merely iconic edifices of man's vanity. We will go beyond Solaris & the Supertrees.

Q: What advice would you give to someone who wants to pursue a career in architecture?

The same advice I give to all my new staff; I am older and have 'wisdom' having been there & done that, you have no such baggage and should pursue what you are passionate in with conviction and the daring to try another path. If you love making buildings and places that represent your passions, be an architect; if you would like to build a strong foundation, apprentice with CPG and learn from the many experts here. With effort, you will be a better architect than me.

Q: What goals have you set for the next five years? What kind of work do you want to accomplish?

My next five years will be to transform my teams into the best at placemaking solutions in Asia. We hope to create new sustainable developments and communities that regenerate what Man has pillaged from Nature. And we will be happy having been leaders & champions in such new approaches.



SEAB

SOUTHEAST ASIA BUILDING



Scan to visit our website

A leading architectural magazine in Asia featuring current trends in building design, interior design, landscape architecture and facility management, plus news, projects, product reviews and reports on international trade fairs since 1974.

WE ALSO PUBLISH

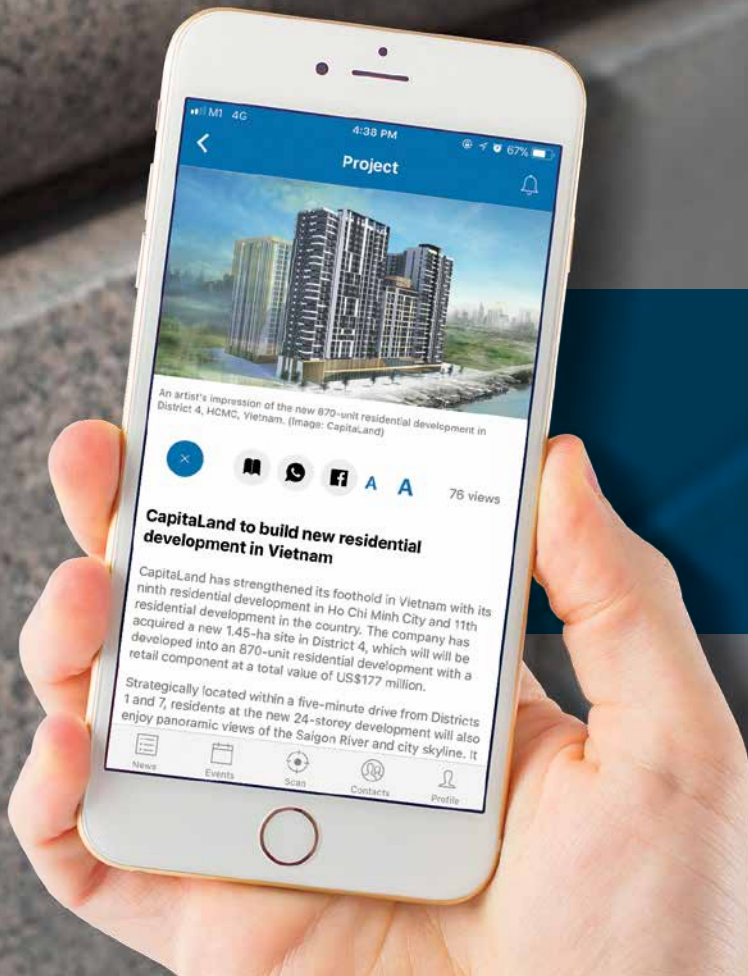


TRADE LINK MEDIA PTE LTD

101 Lorong 23 Geylang #06-04 Prosper House Singapore 388399 Tel: (65) 6842 2580 Fax: (65) 6745 9517 info@tradelinkmedia.com.sg | www.tradelinkmedia.biz

ADVERTISERS' INDEX

ASEAN SUSTAINABLE ENERGY WEEK (ADVERTORIAL)	30
DORMAKABA	OBC
GEBT 2018	32
GRUNDFOS	5
HUNTER DOUGLAS	1
ISE 2018	IFC
LATHAM AUSTRALIA	11
LED EXPO 2018	62
MAPEI	3
MEGABUILD INDONESIA 2018	16
PLAYPOINT	7
R + T ASIA 2018 (ADVERTISEMENT)	20
R + T ASIA 2018 (ADVERTORIAL)	18
SAPA BUILDING SYSTEMS	9
SMA HOME 2018	2
SMART BUILDINGS CONFERENCE 2018	28
VICTAULIC	13
WORLDBEX 2018	22
XIAMEN STONE FAIR 2018	26



We have made it easier for you to read on your phone!



TRADECARDS
GLOBAL

App features include

- Digital issue browsing
- Industry news update
 - Events update
- Organisation listings and more...

VISIT OUR WEBSITE AT
www.tradecardsglobal.com

Download **Tradecards Global** mobile application to browse and read our current and past issues of



Smart access means reliability



Dorma and Kaba become dormakaba.
A smart step – for your peace of mind. We put together access solutions which meet the highest standards when it comes to security and reliability. And we offer you that feeling of security, reliability and confidence around the clock, all year long. Because your trust in us is our most valuable asset.

dormakaba offices in ASEAN:

Singapore	Tel : +65 6268 7633
Malaysia / Brunei	Tel : +603 5523 5015
Philippines	Tel : +63 2 893 4077
Indonesia	Tel : +62 21 2930 3762
Vietnam	Tel : +84 903 704172
Thailand/Cambodia/ Myanmar/Laos	Tel : +662 236 4994

www.dormakaba.com.sg

dormakaba