

bathroom +kitchen **today**



Download our new Tradecards Global App on iOS and Android to read the latest issue!

| PROJECTS

| COLLECTIONS

| FEATURES

january - march 2018



A SPLASH OF COLOUR

Using colours and patterns to enliven any room

COME TO THE DARK SIDE

Black is here to elevate your bathroom game

ONE SOCIAL KITCHEN

How one project brought new meaning to cooking for good

architect'18



The 32nd ASEAN's Largest Building Technology Exposition

beyond
ordinary

1 - 6

MAY 2018

10AM-8PM

IMPACT



Organized by



asa

TTF
THE MARKETPLACE PRODUCER

ufi
Member

Tel. +66 2717 2477

info@TTFintl.com

www.ArchitectExpo.com



hansgrohe

Three years of fussing. And suddenly she likes showering.

Sometimes the art of engineering is more convincing than the art of persuasion. Especially when it turns the everyday into an experience. **hansgrohe. Meet the beauty of water.**

hansgrohe.com.sg

Hansgrohe Pte Ltd

69 Mohamed Sultan Road, Singapore 239015 • Tel: 6884 5060 • Fax: 6884 5071 • Email: info@hansgrohe.com.sg

Authorised Dealers:

Bathroom Solutions by Econflo Systems Pte Ltd:

401 Commonwealth Drive, #01-01, Lobby B, Haw Par Technocentre, Tel: 6396 3738

Bretz & Co Pte Ltd: 1 Nassim Road, #01-02, 1 Nassim, Tel: 6336 9926

Carera Bathroom Pte Ltd: Showroom relocation in progress, Tel: 6533 0455

Homeplus 2000 Building Products: 312 Changi Road, Tel: 6846 8749

Homewerkz Pte Ltd: 28 Sin Ming Lane, #03-144/145, Midview City, Tel: 6659 5955

Home & Bathroom Bldg Products Pte Ltd: 566 Balestier Road, Tel: 6253 4655

J-Asia (Singapore) Pte Ltd: 33 Ubi Avenue 3, #01-30, The Vertex, Tel: 6339 2338

Lucky Khoon Bathroom Studio Pte Ltd: 61 Ubi Road 1, Oxley Bizhub 1, #01-35/36/37
Tel: 6346 2172

Viva Nueva Pte Ltd: 496/498 Sims Avenue, Tel: 6744 6938

VolumeFive Pte Ltd: 51 Anson Road, #01-53, Anson Centre, Tel: 6348 2508

Press releases, proposals for stories, and product development literature should be submitted by email to the editor at:

bathroom@tradelinkmedia.com.sg
kitchen@tradelinkmedia.com.sg



On the cover: **Armani Roca**
Photo Credits: **Roca**

Disclaimer

All advertisers and contributors must ensure all promotional materials and editorial information submitted for all our publications, must be **free from any infringement on patent rights and copyrights laws in every jurisdiction**. Failure of which, they must be fully liable and accountable for all legal consequences (if any) that may arise.

The editor reserves all rights to exclude or refuse submissions at any time without prior written or verbal notice if contributing parties do not provide complete text and supporting images at a minimum of 300 dpi in .tif format.

The editor reserves all rights to omit and amend press releases submitted for publication. Both publisher and editor are unable to accept any liability for errors or omissions that may occur in this process, although every effort has been taken to ensure that all information is correct at the time of going to press. Edited press releases, articles or stories are returned to contributors for check on facts at the sole discretion of the editor. No portion of this publication may be reproduced in whole or part without written permission of the publisher.

PUBLISHER
Steven Ooi
steven.ooi@tradelinkmedia.com.sg

EDITOR
Nicole Lee
bathroom@tradelinkmedia.com.sg

MARKETING EXECUTIVE
Veronica Lim
veronica.lim@tradelinkmedia.com.sg

GROUP MARKETING MANAGER
Eric Ooi
eric.ooi@tradelinkmedia.com.sg

MARKETING MANAGER
Felix Ooi
felix.ooi@tradelinkmedia.com.sg

HEAD OF GRAPHIC DEPT / ADVERTISEMENT COORDINATOR
Fawzeeah Yamin

GRAPHIC DESIGNER
Siti Nur Aishah

CIRCULATIONS
Yvonne Ooi

bathroom + kitchen today is published **four** times a year by:

Trade Link Media Pte Ltd
(RCB Regis. No. 199204277k),
101 Lorong 23, Geylang
#06-04 Prosper House,
Singapore 388399

T: 65-6842-2580, F: 65-6842-2581/65-6745-9517
E: bathroom@tradelinkmedia.com.sg
E: kitchen@tradelinkmedia.com.sg
W: www.tradelinkmedia.com.sg

INTERNATIONAL SALES OFFICES

[FRANCE]

A.P. Watt International Publisher's Representative
6, Rue Des Acacias,
91810 Vert-Le-Grand, France
T: 33-1-6456-0015; F: 33-1-6456-0863

[ITALY/SWITZERLAND]

Arch. Aldo Cacchioli Publistein di Galli Cacchioli & Co.
Via Ciseri 5, 6600 Locarno, Switzerland
T: 41-91-751-6910; F: 41-91-751-7109

[JAPAN]

T. Asoshina/Shizuka Kondo ECHO Japan Corporation Grande Maison,
Rm 303, 2-2, Kudan-Kita,
1-Chome, Chiyoda-ku, Tokyo 102, Japan
T: 81-3-3263-5065; F: 81-3-3234-2064

[KOREA]

MCI
Room B615, Hanwha Obelisk 2,
481, World Cup buk-ro,
Mapo-gu, Seoul,
Korea 03902
T: +82 2 730 1234 F: +82 2 732 8899

This publication is available at no charge to subscribers from industries related to the bathroom who meet the publication's terms of control. For subscribers who do not qualify for free subscription, copies will be made available, subject to acceptance by the publisher, for a subscription fee which varies according to the country of residence in the following manner:

Annual Subscriptions

Europe / America - S\$130,
Japan, Australia, New Zealand, Middle East - \$130
Asia Pacific - S\$80,
Malaysia / Brunei - S\$65,
Surface mail: Singapore - S\$32 (Incl 7% GST Reg No.: M2-0108708-2)

Please fax your enquiries to
+65 6842 2581 or +65 6745 9517 or call +65 68422580

Printed in Singapore by:
KHL Printing Co Pte Ltd MCI (P) No: 049/02/2017
ISSN 2345-7120 (Print) and ISSN 2345-7139 (E-periodical)

The following titles are also published by us:

Southeast Asia Building • Southeast Asia Construction • Security Solutions Today • Lighting Today • Lighting Audio Visual Asia



QUE Social Kitchen
Poppi (TS0135)

tuscany

BY SEASONSTONE SINGAPORE

19 Burn Road 03-03
Singapore 369974
enquiries@seasonstone.com.sg
www.seasonstone.com.sg

006
editor's note

008
global news
events
corporate

032
product special
back to the future

034
project focus
exploring bravat's affability faucet
the toilet experience in cambodia
100 years of roca
roca's beijing gallery
kitchen of the future by silestone

051
surfaces
a splash of colour
collections

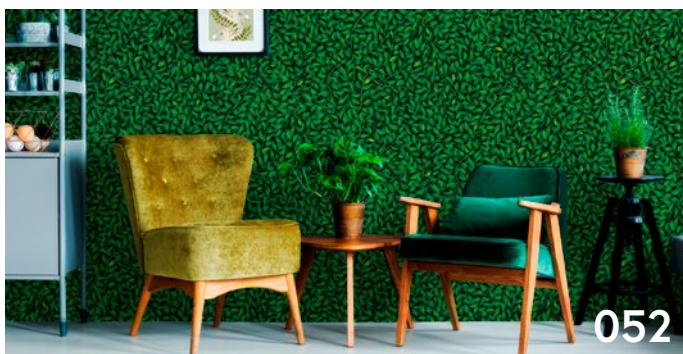
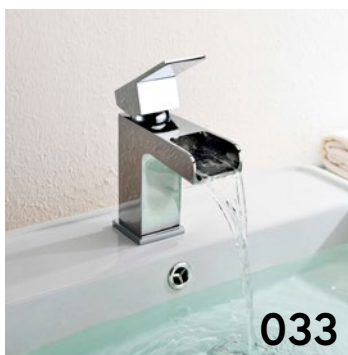
067
bathroom spaces
come to the dark side
collections

089
kitchen spaces
oue social kitchen
mcnair 264
collections

098
show preview
megabuild 2018

100
show review
the big 5 construct indonesia 2017

104
calendar of events





EDITION 400

SENSUOUS SHAPES IN GLEAMING CHROME

A characteristic of EDITION 400 is the sensuously beautiful style. The gleaming chrome plated fittings and accessories present themselves as filigree sculptures. Conceived by the design agency Tesseraux + Partner and produced in Germany, the EDITION 400 range has been awarded four internationally acclaimed design awards. www.keuco.com



DESIGN PLUS
powered by: **ISH**



Available in: China, Hong Kong, India, Malaysia, New Zealand, Philippines, Singapore, Taiwan, Thailand
KEUCO GmbH & Co KG. Postfach 1365 D-58653 Hemer, Germany. office-singapore@keuco.com

KEUCO

Dear Readers

Happy 2018! 2017 seen Bathroom + Kitchen Today attending more events than the previous years, being poised at the forefront of the ever-changing bathroom and kitchen landscape in Singapore. We share some of these exciting new brands, products and innovations in this issue!

Our cover story is themed to the tune of Star Wars. Join us in an introspective look into using the dark side (black) in the bathroom – yes, sounds tricky but when done right, this unique colour will effortlessly be the sophisticated ooze into an otherwise ordinary space. Pro-tip: If you're thinking of going big, find the optimal furniture placement where light can easily circulate around the space, allowing it to be consistently lit. Think mirrors with integrated light, wide window panes and light ceiling colours to contrast.

Our kitchen feature covers two interesting stories – the OUE Social Kitchen and the McNair 264 kitchen. The former introduces OUE Social Kitchen, a communal space designed for friends, families, and strangers to meet and cook at a common table. The latter delves into a transformation of the McNair 264 Kitchen, a formerly plain kitchen now upturned into a modern and luxurious space with the semblance of a boutique designer hotel.

Have something bathroom or kitchen related to share? Send it in! We welcome submissions and would be happy to feature pieces from loyal readers. To end off, we wish you a happy start to 2018 – to an amazing year ahead!



Nicole Lee

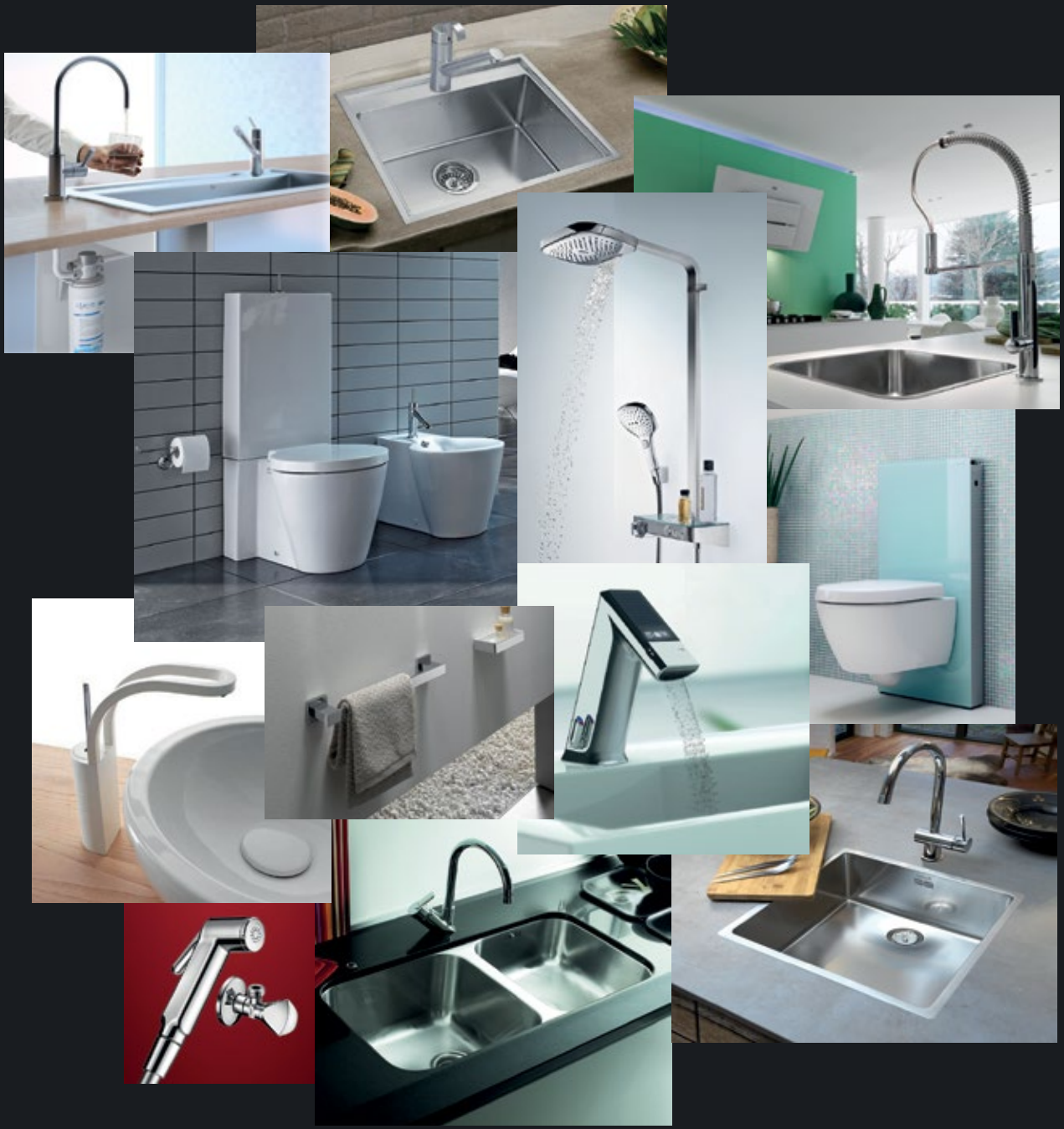
Nicole Lee
Editor

YOUR COMPLETE BATHROOM SOLUTIONS

PREMIUM BRANDS

UNDER ONE ROOF



ECONFLO SYSTEMS PTE LTD

Main

401 Commonwealth Drive, #01-01, Lobby B
 Haw Par Technocentre, Singapore 149598
 Tel : +65 6396 3738 Fax : +65 6396 3736
 Email : sales@econflo.com
 Website : www.econflo.com

Premium Outlet

by Econflo Systems Pte Ltd
 34 Boon Leat Terrace, #03-02
 Singapore 119866
 Tel : +65 6266 5562 Fax : +65 6250 1943
 Email : premiumoutlet@econflo.com

Econflo Systems (Cambodia) Co., Ltd

Unit 102, Ground Floor Taiming Hotel,
 No. 281 Preah Norodom Blvd,
 Phnom Penh 12301, Cambodia
 Tel : +855 23 901 522 Fax : +855 23 90 1523
 Email : sales-kh@econflo.com



THE WORLD DESIGN SUMMIT (WDS): A MEMORABLE MEETING WITH A POSITIVE FUTURE IMPACT



For the first time, representatives of leading international organizations representing designers, architects, planners and landscape architects have collaborated effectively to present a united position on the utilization of design to cope with pressing global economic, social, environmental and cultural challenges. This consolidation of the dynamic forces of design persuaded several leading international agencies to participate in the meeting, including UNESCO, UN-Habitat and UNEP, to name just a few.

As a result of this meeting, the first Montréal Design Declaration will now be the cornerstone for building the future; a reference document on which all participants will be able to rely. This text is an exceptional resource that highlights the strength and effectiveness of design when it focuses on improving people's quality of life and proposes concrete solutions to current problems.

The Montréal Design Declaration: What it contains

In addition to expressing a common vision of the essential role of design and the important responsibility of designers while asserting the fundamental contribution of design to achieve a better tomorrow, the Montréal Design Declaration is built around 8 specific statements: Design is a driver of innovation and competition, growth and development, efficiency and prosperity; Design is an agent for sustainable solutions created for people and supporting the planet on which we rely; Design

expresses culture; Design adds value to technology; Design facilitates change; Design introduces intelligence to cities as a foundation for better communications, improved environments, enhanced quality of life and more prosperous local communities; Design addresses resilience and manages risk; and Design fosters development of SMEs in general and the creative industries in particular.

This first Declaration also proposes concrete and targeted actions. These are based on the premise that leadership in the field of design is key to providing permanent solutions and that the implementation of design methodologies contributes greatly to a sustainable future. The Montréal Design Declaration makes 9 calls to action. It calls for: design advocacy, development of design metrics, development of design policies, development of design standards, enhancement of design education, responsive design, responsible design, vigilant design and finally recognition of the value of design by leaders, decision-makers and influencers across all sectors of society.


In addition, a total of 20 projects that are perfectly in line with the Declaration's ambitions are proposed in response to the actions. Thus a process will be established to identify the projects to be initiated as well as their course of implementation. Projects will be carried out by groups of interested participants, in collaboration with partners and sponsors. The results will be shared and presented at future meetings and events.



A REVOLUTIONARY CERAMIC MATERIAL.

◆ SaphirKeramik, a high-tech material driving innovative design.
With its precise, thin-walled forms and tight-edge radii, Laufen brings a new language to bathrooms. Collection INO, design by Toan Nguyen.

LAUFEN

Bathroom Culture since 1892  www.laufen.com

Roca Bathroom Products Singapore Pte. Ltd. (199503842Z)

8 Burn Road, #12-07, Trivex, Singapore 369977

Tel: +65 6333 4080, Fax: +65 6636 7476, www.sg.roca.com, enquiries.sg@sg.roca.com

Roca Malaysia Sdn. Bhd. (5554-M)

Level 3A, Quattro West (West Wing), No. 4, Lorong Persiaran Barat, 46200 Petaling Jaya, Selangor Darul Ehsan, Malaysia

Tel: +603 7952 2522, Fax: +603 7952 2696, www.my.roca.com, enquires@my.roca.net

The Design Summit Meeting: What they said

"As the Design Summit Meeting steering committee, our focus is on achieving ways to radically improve the experience people have of the places we create, because the quality of our environment is directly proportional to the quality of our lives. It's an equation as simple as it is compelling," explained Kathryn Moore, President of the International Federation of Landscape Architects (IFLA).

Regitze Marianne Hess, Special Advisor for the International Federation for Housing and Planning (IFHP), confirmed the immediate impact that the Design Summit Meeting will have: "For IFHP sustainable design goals are inherent to sustainable development's goals, aka UN 2030 SDGs. As the International Federation for Housing and Planning, we see design solutions as part and parcel to the urban solutions."

David Grossman, President of ico-D (International Council of Design) supported his colleague's comments with enthusiasm: "The Design Summit Meeting and the Declaration affect every individual professional designer, architect and planner - practicing or future - and is relevant to business, government, educators and people everywhere."

Marie-Claude Parenteau-Lebeuf, Chair of the Board of the World Design Summit Organization (WDSO) – founding partner and event organizer– "This meeting will have enabled us to send a clear message to the political bodies and decision-makers, as well as a signal that the international design community is

united behind concrete goals."

Alain Dufour, Secretary General of the Design Summit Meeting – "After 9 years of hard work and meeting with hundreds of people around the world, we are proud to see this movement of architects, designers, landscape architects and planners who want to change the world, now in action".

The Design Summit Meeting was the first joint effort by the consolidated international design community and international economic, social, environmental and cultural agencies to establish a roadmap for the utilization of the power of design for the good of all. This initiative will have manifest repercussions for the coming years if not decades.

About the World Design Summit (WDS)

The Design Summit Meeting is a component of the World Design Summit that took place in Montreal from October 16-24, at Palais des Congrès de Montréal, where a Congress and an Expo were held.

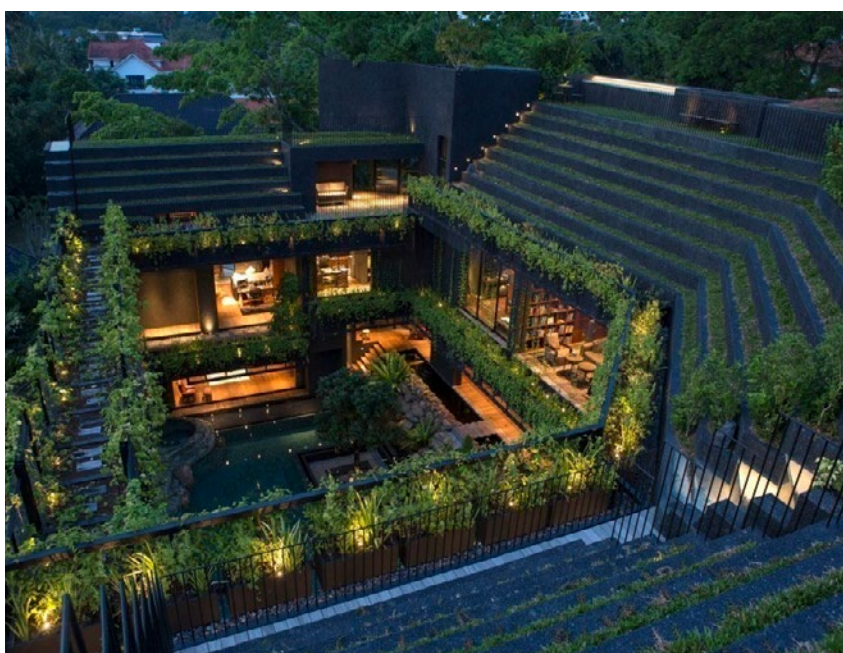
Pierre-Alain Gariépy, President and CEO of the World Design Summit Organization (WDSO) – founding partner and organizer – "The World Design Summit, with its 650+ keynotes and speakers, 500+ presentations Congress and its 350+ exhibitors Expo, is a great start and promising for the future. Mission accomplished!"

For more information, visit www.worlddesignsummit.com.

WINNERS OF THE AMERICAN ARCHITECTURE PRIZE - FIRM OF THE YEAR AWARD 2017 ANNOUNCED

The American Architecture Prize has announced the winners of its Firm of the Year Award 2017. Global interest was high for the inaugural award, with applications from over 40 countries all over the world. AAP's jury recognized the work of over 20 visionary companies, awarding titles in the disciplines of architecture, interior design and landscape architecture.

The American Architecture Prize is a global platform that honors the greatest achievements of architecture firms. The mission of AAP is to celebrate excellence, creativity and innovation across architecture, interior design, and landscape architecture. The Firm of the Year Award recognizes the full portfolio of firms, taking into consideration the company size, specializations and resources.





Living in Luxurious Comfort

The art of perfection

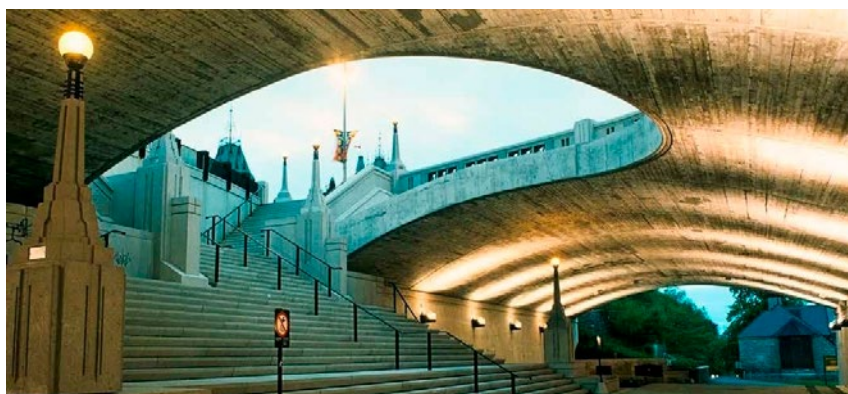
*In life's ever changing demands, a place of serenity can never be compromised.
JohnsonSuisse manufactures and designs quality bathroom products that are superior
in functionality and classic in aesthetic appeal.*



JohnsonSuisse
Bathroom Solutions

Roca Bathroom Products Singapore Pte Ltd (1995038422)
SHOWROOM: 8 Burn Road #12-07 Trivex, Singapore 369977. Tel: +66-6333 4080 Fax: +66-6636 7476

• www.johnsonsuisse.com.sg •



The winners of the Firm of the Year Award 2017 were selected by AAP's esteemed jury, comprised of 32 architecture experts and professionals. The following firms have been chosen as the main category winners in 2017 for their accomplishments and vision, and will be receiving the AAP trophy:

- Allford Hall Monaghan Morris from London, United Kingdom - Architectural Firm of The Year
- PFS Studio from Vancouver, Canada - Landscape & Urban Design Firm of the Year
- Kossmann.dejong from Amsterdam, The Netherlands - Interior Design Firm of The Year

In addition to the 3 main disciplines, 19 subcategory winners have also been selected. The winners include:

- Desai Chia Architecture from New York, United States - Small Firm of the Year Award in Multi-Disciplinary Architecture
- Rob Mills Architecture & Interiors from Melbourne, Australia - Medium Firm of the Year Award in Residential Interior Design
- Belzberg Architects from Santa Monica, United States - Medium Firm of the Year Award in Residential Architecture
- Chang Architects from Singapore - Small Firm of the Year Award in Residential Architecture
- JGMA from Chicago, USA - Medium Firm of the Year Award in Institutional Architecture

"We are thrilled to have received so many great submissions already in the first year of the Firm of the Year Award, from small and large firms as well. Recognizing the unique qualities of these firms allows us to celebrate their success and to promote their work to the public" said AAP President Hossein Farmani.

The AAP also recognized the achievements of 31 shortlisted firms, including the following:

- Studio Gang from Chicago, United States- shortlisted in Multi-Disciplinary Architecture
- Studio Munge from Toronto, United States - shortlisted in Multi-Disciplinary Interior Design
- Destilat from Vienna, Austria - shortlisted in Commercial and Industrial Interior Design
- Gus Wüstemann Architects from Zürich, Switzerland - shortlisted in Residential Architecture

The complete list of winners and the shortlist is available on the AAP website.

Winners will be invited to the Winners Event taking place in New York City this October. They will also get extensive publicity showcasing their designs to a worldwide audience, throughout the next year.

While the 2017 Firm of the Year Award winners have already been selected, applications are still open for the AAP Design of the Year Prize, where individual projects will be evaluated and recognized by the American Architecture Prize jury. The regular deadline is August 31, 2017.

About the AAP

The American Architecture Prize is based in Los Angeles, California with the mission to advance the appreciation of quality architectural design worldwide.

For more information, visit www.architectureprize.com.



MEISSEN

METTA WELFARE ASSOCIATION CELEBRATED HER 25TH ANNIVERSARY WITH A MYSTICAL ENCHANTED FOREST THEMED CHARITY BANQUET AT THE MARINA BAY SANDS



The forested theme symbolises the association’s continuous growth as it evolves and adapts to the changing needs, providing relevant services to the community for two and a half decades. Inaugurated in 1992, Metta commenced operations of her first centre, Metta Day Activity Centre for the Intellectually Disabled in 1995, serving 32 clients. Followed closely in the next few years saw the start-up of services such as the Metta student care centres, special education for children with special needs and geriatric medical care centres that Metta took under her wings. With the evolving needs of society, Metta consolidated its services to focus on special needs and medical care for the ageing population, with the most recent programme being Metta Home Nursing. Commenced in April 2015, the programme meets the growing demands of the ageing population with home management care for adults with chronic illnesses. To date, Metta serves over some 1,100 clients from all races, religions and ages at its nine centres islandwide. Metta firmly believes in unceasingly nurturing its clients and provide unfailing support to ensure that they are best able to be equipped in overcoming their challenges.

Metta’s Deputy Executive Director, Felicia Wee, says, “I am heartened that with the collective support of the community and our donors, we have strived to continue providing relevant quality programmes and services to our clients so that they are able to overcome their challenges and lead a meaningful life.”

In its commemorative milestone, Metta has also released a compilation of 25 heartwarming and inspirational stories of people behind Metta: our beneficiaries, volunteers, donors and partners - ordinary every day heroes whose actions embodies perseverance and compassion.

For more information on how to purchase the Metta Silver Jubilee Commemorative Book, please log on to <http://www.metta.org.sg/mettabanquet> for more details. Funds raised from the sale of the Metta Silver Jubilee Commemorative Book and Charity Banquet goes into funding the programmes and services for Metta’s beneficiaries across all its nine centres islandwide.



About Metta Welfare Association

Metta Welfare Association plays a pivotal role in realising its mission through nine welfare centres located islandwide. Currently serving over 1,100 beneficiaries from various races and religions, these centres are segregated into the areas of Disability Care, Medical Care, Children Care, Special Education and Alumni Care.

Metta aims to deliver a holistic approach to development and enrichment programmes for its beneficiaries. We seek the support of the community in our fundraising efforts to provide quality programmes and services to our beneficiaries.

For more information, visit www.metta.org.sg.



Easy Clicker Waste: Making Life Easy

Set to revolutionise the bathroom, the new range of clicker waste systems is an innovative combination of the clicker and plug.

Equipped with a waste body and clicker plug, the system's clicker plug can be easily pulled out or in, making it simple to use and maintain.

Simple, yet functional, the clicker waste system is a perfect addition to any bathroom.



ADD: JIANGSHAN, YINZHOU, NINGBO, CHINA 315191
TEL: 0574-87641687 FAX: 0574-87641686
INFO@BOSHENGPLUMBING.COM
WWW.BOSHENGPLUMBING.COM

AZURE REVEALS THE WINNERS OF THE 2017 AZ AWARDS

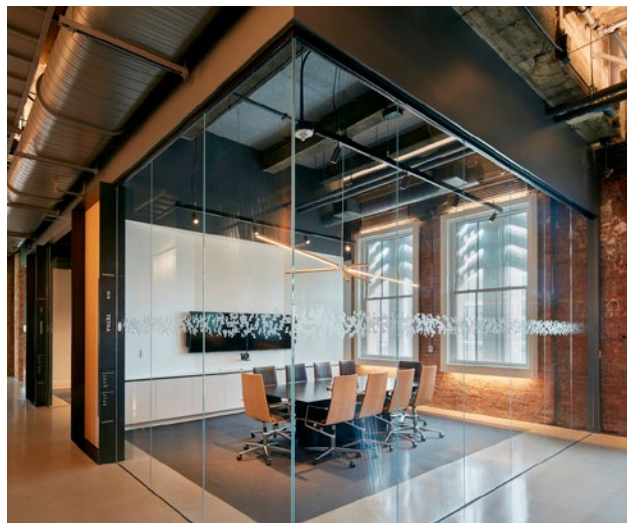
Winners and finalists flew in from as far away as Poland and China to attend the celebration on June 23, at Toronto's iconic Evergreen BrickWorks, where the results of Azure's seventh annual AZ Awards competition were announced in the presence of top talents from the local and international architecture and design communities.

The 20 winners of the 2017 AZ Awards proved their prowess through stunning and innovative projects that represent a snapshot of the leading work in global architecture and design today – from a curious, castle-like observatory in New Hampshire that maximizes stargazing to a bicycle-powered canopy that can unfurl anywhere an event space is needed to a 31.3-hectare park that preserves delicate wetlands in China. To mark their achievement, they were each awarded a one-of-a-kind trophy, the creation of Canadian-born, international design phenomenon, Philippe Malouin.

This year's submissions reached an impressive 813 from 41 countries, setting a formidable task for our jury of renowned experts. Gathering in March to narrow down the hundreds of submissions to a shortlist of 70 finalists were: planner and landscape ecologist Nina-Marie Lister, interior designer Alessandro Munge, industrial designer Theo Richardson, architect Nader Tehrani and multidisciplinary designer Michael Vanderbyl. The jurors met at Toronto's Drake Hotel – itself a historic landmark – where through debate and discussion they made their final selection of the best of the best – the 20 exceptional winners who were honoured on June 23.

The 2017 AZ Awards is presented by Audi, Cosentino, DXV, Keilhauer and Rado, and sponsored by TD Bank Group, Urban Capital and George Brown School of Design. The AZ Awards Gala is sponsored by Alpi, Bauhaus, Farrow & Ball and Euro-Line.

For more information, visit www.awards.azuremagazine.com.



WINNERS CROWNED AT WATG'S INAUGURAL ARCHITECTURAL BAKE-OFF IN SINGAPORE



World renowned and award winning integrated design firm, WATG, hosted the first Great Architectural Bake-Off in Singapore on Saturday, 14 October 2017.

The inaugural event, which was held in partnership with Archifest 2017, saw some of Singapore's biggest design firms battle it out, as they competed head-to-head to create some of the world's most iconic buildings, entirely out of cake.

The team from DP Architects were crowned this year's winners with their winning entry of Singapore's iconic Esplanade. WATG came in second place with their realistic representation of the Yanlord Crowne Plaza Resort "The Boat", Hainan Island, China. The tastiest building went to CPG with their creation of Singapore's Gardens by the Bay.

THREE KINDS OF EFFLUENT CONTROL MODES



Waving induction
Immediate response
Water can be discharged without touching the tap



Manual effluent
Traditional way
Adjust water flow and water temperature, easy to use



Induced effluent
Immediate response
Water can be discharged without touching the tap

**Infrared electronic induction kitchen faucet .
by KON international**

www.kon.com.cn

"We were truly blown with all of the entries that we had this year," said Chris Panfil, Vice President & Director of Strategic Planning & Urban Design, WATG. "All teams showed a great level of commitment and the event was thoroughly enjoyed by all who attended. The standard of design was outstanding and following the success of this year, we're already looking forward to hosting 2018 here again in Singapore."

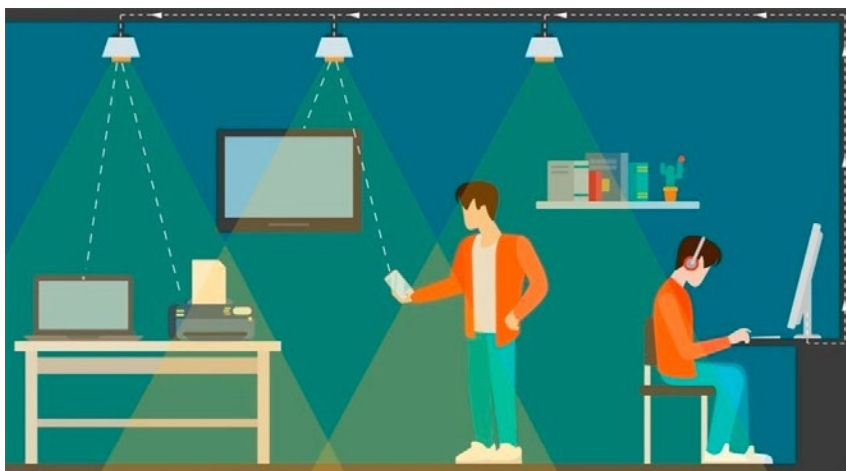
Other entries this year included Cistri, with their take on the Esplanade Concert Hall, Gensler with the Shanghai Tower, Ministry of Design with the Iconic Pearl Bank, P + A with an Iconic Shophouse and URA with The Interlace.

This year's judging panel included leading industry experts, Suan Chiang Tay, Architect and Design Correspondent for The Business Times; Eve Felder, Managing Director, The Culinary Institute of America, Singapore; Samuel Maruta, Chairman & Co-Founder, Marou Chocolate Company; Michelle Yong, Director, Aurum Land, Co-Founder of Collision 8 and fourth generation family business leader in Woh Hup; Vivian Pei, well known culinary influencer; and Fong Hoo Cheong, Executive Director, Singapore Institute of Architects.

For more information, visit www.greatarchitecturalbakeoff.com.



GLOBAL LIFI TECH: NEW AGREEMENT WITH OLEDCOMM, THE LIFI PRECURSOR



Global LiFi Tech is pleased to announce the signing of an partnership with the French company Oledcomm for the promotion, implementation and development of LiFi (Light Fidelity) in Canada. The agreement will allow Global LiFi Tech to implement the new technology quickly and dominate an untapped market. This is the first time a French company involved in developing this technology has signed a partnership of this scale for Canada.

New LiFi distributor

Global LiFi Tech is a Canadian startup focusing on the implementation of this new technology. "We are very pleased to be working with Oledcomm," said Hacène Tedjini, CEO of Global LiFi Tech. "This agreement will allow us to launch a significant growth phase for our company."

"Global LiFi Tech is an excellent partner, and this agreement reflects our strong desire to work with companies that share our vision for this technology of the future," added Benjamin Azoulay, CEO of Oledcomm. The company is known as the European leader in LiFi and has signed contracts with several large French firms.

Technical development will be an essential part of the plan's implementation. Initially, Oledcomm will supply Global LiFi Tech with products already developed for the European market. Once the plan has been implemented, the Canadian company will contribute to the adaptation of LiFi products for the Canadian market. The range of products includes routers and LED (light-emitting diode) lights allowing Internet connections that use light as the carrier wave.

About LiFi

While Wi-Fi uses the radio portion of the electromagnetic spectrum, LiFi uses the visible spectrum. By turning an LED on and off millions of times a second, it is possible to transmit binary data. Extremely rapid changes in the sequence,



Asia's Innovative Technology Showcase for the
**Building, Electrical Engineering
 and Security Industries**

9-11 MAY 2018

Hong Kong Convention & Exhibition Centre



follow us



www.Build4Asia.com



Book Your Booth Now!

Save up to 50% with SME Fund



UBM HKES

17/F China Resources Building,
 26 Harbour Road, Wanchai,
 Hong Kong
 Ms Abby Cheung
 +852 2827 6211
 exhibit@build4asia.com

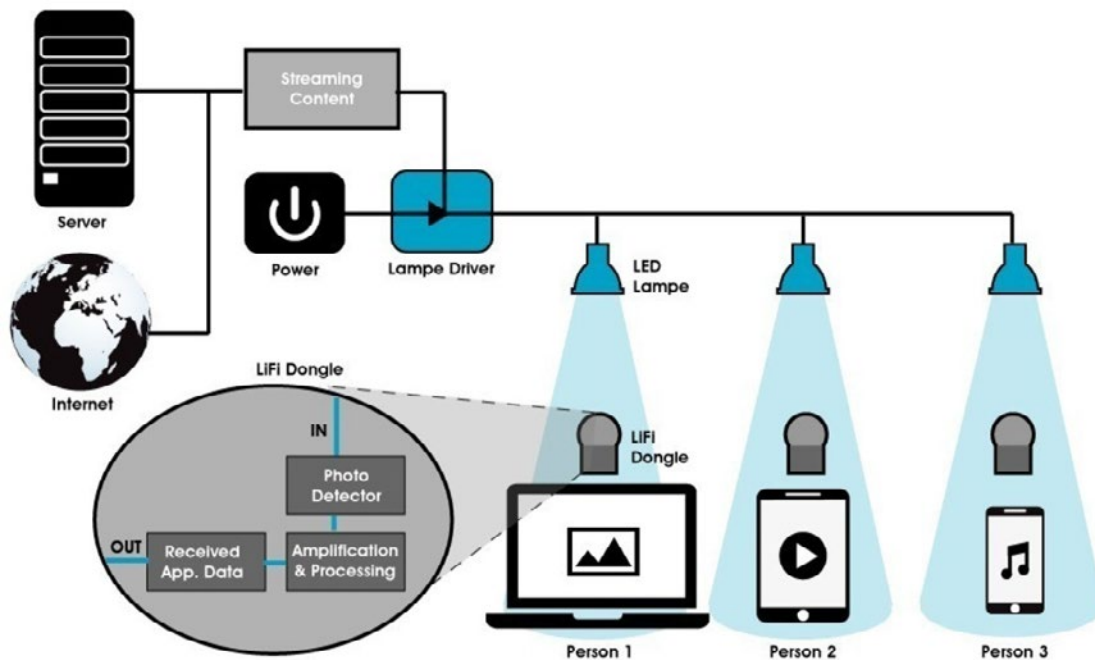


Worldwide Co-ordinator

240 Blackfriars Road,
 London SE1 9UF, United
 Kingdom
 Ms Mel Siaulyte
 +44 (0)20 7560 4336
 Mel.Siaulyte@ubm.com

Southeast Asia Co-ordinator

10 Kallang Avenue, #09-15
 Aperia Tower 2, Singapore
 339510
 Ms Fiona Seetoh
 +65 6233 6777
 Fiona.Seetoh@ubm.com



invisible to the human eye, can carry video, audio or any other type of data at speeds faster than those available today: 1 Gbps for LiFi, as compared to 150 Mbps for Wi-Fi. Note that LiFi will not replace Wi-Fi or GSM (3G, LTE, etc.), but complement them.

The global market for LED lighting is estimated to reach \$100 billion by 2020. Tens of millions of LED lights (potential LiFi carriers) are manufactured every year. LEDs are expected to represent 75% of the lighting market by 2020. The LiFi market is estimated at \$6 billion in 2018 (source: MarketsandMarkets).

It is well known that demand for Internet connectivity is growing rapidly. Data traffic is increasing by 50% annually, led by video streaming, which could account for nearly 45% of data traffic in 2019.

“Wide LiFi network coverage, high bandwidth, indoor geolocation accurate to 10 cm, data security, harmless waves: all of these benefits could open the door to multiple applications, limited only by developers’ creativity and skill.”

LiFi: the technology that will transform the communications of tomorrow.

About Global LiFi Tech

Global LiFi Tech is a Canadian company founded in 2016 in thriving and exciting Montreal. The startup is working towards the commercialization, promotion, development and installation of a new light-based data transmission technology called LiFi. Global LiFi is also present in the relamping domain (the conversion of conventional lighting to LEDs) with the assistance of its strategic partners. The company offers to retailers, museums, hospitals, smart-cities and many more, the technology and products of its french partner Oledcomm.

For more information, visit www.globallifitech.com/en/.



TOPS ON TOP

Cindy Crawford on Silestone® Eternal Marquina



On Top

Discover more at silestone.com | Follow Us  [cosentinoAsia](https://www.facebook.com/cosentinoAsia)  [Cosentino TV](https://www.youtube.com/CosentinoTV)



METHVEN OFFICIALLY LAUNCHED IN SINGAPORE ON 2 NOVEMBER 2017, WITNESSED BY NEW ZEALAND'S HIGH COMMISSIONER TO SINGAPORE, DR JONATHAN AUSTIN



New Zealand's award-winning and market-leading premium shower and tapware brand Methven Limited (MVN) is pleased to announce they have signed distribution agreements with 3 appointed distributors in Singapore covering all sales networks from traditional bathroom stores and DIY stores to online sales and developer projects.

New Zealand's High Commissioner to Singapore, Dr Jonathan Austin and Regional Director of New Zealand High Commission for East Asia, Ms Clare Wilson, witnessed the signing ceremony in Singapore. Methven Chief Executive Mr David Banfield signed the agreements with Bacera Pte Ltd, Uniquos Pte Ltd and Volume Five Pte Ltd, in a strategic move which sees each distributor targeting different market segments.

Creating amazing water experiences since 1886, Methven has a strong history of innovation and design, having successfully commercialised a number of international award-winning bathroom technologies including Satinjet® and Aurajet®.

The Aio Aurajet Shower range, awarded 'Best of the Best' at 2017 Red Dot Awards, is Methven's most advanced, most invigorating

shower experience ever. Its breakthrough spray technology and unique halo shape are intrinsically linked in an enduring union of form and function.

Aurajet delivers 20% more spray force and twice the water contact on the skin than conventional showers—this continuing Methven's commitment to savings on water and energy bills for consumers without compromising the shower experience. Aio is the most awarded range in Methven's rich 131 year history, bringing the total to 23 national and international awards for the Aio range.

Methven's Group Chief Executive Officer Mr David Banfield said "Following a major partnership with Malaysian listed company Impuda Bhd in July 2017, the appointment of 3 partners in Singapore will add significant value to Methven's growth strategies in South-east Asia. We have always recognised that Singapore represents a significant opportunity with our world-leading shower technology. We are proud to take the Methven brand, products and technologies onto the world stage and prove that technically and commercially, we are able to challenge the best."



Another highlight of the Singapore launch is the introduction of the Kiri Low-Flow shower head using Satinjet® technology that has achieved the WELS (Water Efficiency Labelling Scheme) Three-Star rating on mains pressure (5.0L per min flow rate), spray force and spray coverage — with reference AS 3662-2013, Standards Australia, for performance of showers for bathing.

Selected models of Methven shower heads will be available at Bacera from 3 November 2017 and Uniquos' website (www.uniquos.com) from 6 November 2017; while Volume Five Pte Ltd will be undertaking development projects for Methven shower heads and tapwares. More distribution points will be announced at a later stage.

Besides being awarded 'Best Shower Brand of the Year' at the 2017 UK Bathroom & Kitchen Update(BKU) Awards, the following Methven products were named some of the most innovative and intelligently designed products around the world.

About Methven

Methven is an NZX-listed market-leading designer and manufacturer of showers, taps and valves. Their business is headquartered in Auckland where they design, develop and manufacture many award-winning products and technologies. Their international operations see their products distributed in Australia, China, USA, UK, Middle East and Europe in addition to their home market of New Zealand.

In 2016, Methven celebrated 130 years of innovation and shared their long-term growth plans, Methven 130 - the aim to grow sales to \$130 million. This remains their strategic focus and to enhance this they have recently launched a two-year business transformation plan to ensure they are better placed to weather the impact of unexpected events.

For more information, visit www.methven.com/nz.



Luv. Nordic elegance.

The design of Cecilie Manz' bathroom series Luv combines Nordic purism and timeless, emotional elegance. Soft shapes follow a stringent geometry. The result is a new unique design language with precise, clear and fine edges. For more information, please visit us at **Duravit Training center Singapore**, 63 Tras Street, Singapore 079002, Phone +65 6221 9315, info@sg.duravit.com or www.duravit.com

Econflo Systems Pte Ltd, 401 Commonwealth Drive, #01-01, Haw Par Technocentre, Singapore 149598, Phone: +65 6396 3738, Fax: +65 6396 3736, sales@econflo.com, www.econflo.com

Ferrara Asiapac Pte Ltd, 33 Ubi Avenue 3, #01-27 Vertex, Singapore 408868, Phone: +65 6235 0020, Fax: +65 6484 1087, info@ferrara.com.sg, www.ferrara.com.sg

Sansei Singapura Pte Ltd, 462 Tagore Industrial Avenue, Singapore 737831, Phone: +65 6292 8321, Fax: +65 6292 4520, sales@sansei.com.sg, www.sanseionline.com

Bathroom Gallery, 25 Changi South Avenue 2, Singapore 486594, Phone: +65 6546 5900, Fax: +65 6546 6388, sales@bathroomgallery.com.sg, www.bathroomgallery.com.sg

DEKTON XGLOSS HALO AND SPECTRA WIN ARCHITECTURAL DIGEST GREAT DESIGN AWARD



Dekton®, the innovative ultracompact surface created by Cosentino for architecture and design has been awarded by Architectural Digest Great Design Award. As a leading global design authority, Architectural Digest celebrates the very best of international design and innovative products in its magazine each month. To further elevate distinctive products in an increasingly crowded space, AD recognizes the best of the best with the AD Great Design Awards, curated with the publication's tastemakers, influencers and design enthusiasts in mind.

Among the winners in the kitchen category for the 2017 Great Design Awards: Dekton® XGloss in Halo and Spectra colors.

Dekton® XGloss Halo, a soft white hue married with a high-gloss finish, fits traditional aesthetics and sleek, modern spaces alike. A solid black with exceptional shine, Dekton® XGloss Spectra is a luminous and intense black color that lends a spectacular elegance to any project, whether used as a countertop, backsplash, or flooring.

"Just as Cosentino pioneered the development of Dekton as an extremely resilient ultra-compact surface, we've continued our innovation with a nanotechnology treatment that creates an extraordinarily luxurious, shiny finish on these Dekton colors," says Eduardo Cosentino, EVP Global Sales for Cosentino Group and CEO of Cosentino North America. "We're truly honored for Dekton® XGloss Halo and Dekton® XGloss Spectra to be recognized as one of the very best in kitchen design by a publication so esteemed by the design community around the globe."

Dekton® XGloss Halo, Spectra, and their fellow AD Great Design Winners from the kitchen category will be featured in the November 2017 issue of Architectural Digest, with expanded coverage online and across the Architectural Digest social media platforms.

Winners in the bath category were announced in April, where

Silestone Marquina was also honored with an AD Great Design Award.

About Dekton® by Cosentino

The Dekton® by Cosentino ultra-compact surface is a new and innovative category of surfaces created with the objective of becoming a global leader in the world of architecture and design both for indoor and outdoor spaces.

Dekton® is a sophisticated mixture of the raw materials that is used to manufacture glass, porcelain materials and quartz surfaces. The Dekton® surface can recreate any type of material with a high level of quality. It is manufactured in large format (up to 320 cm x 144 cm) and thin thicknesses (0.8 cm, 1.2 cm and 2 cm). It has superior technical characteristics: resistance to UV rays, scratches, stains, thermal shock and very low water absorption.

All of these characteristics unique to Dekton® are present thanks to the technology used in its production, which has been developed exclusively by the Cosentino Group's R&D department. Dekton® is manufactured with Technology of Sinterized Particles (TSP), an innovative ultra-compact process. This contributes greatly to the fact that Dekton® is a completely revolutionary product; it is durable, very easy to maintain, and has potential for both indoor and outdoor uses including flooring, façades, wall cladding and worktops.

The prestigious architect and designer Daniel Libeskind used Dekton in the creation of "Beyond The Wall", his only work in the Iberian Peninsula. Dekton® is sponsor of the "Rafa Nadal Academy by Movistar", where more than 40.000 m² of the product have been used in different areas such as the façades, flooring and other coverings.

Dekton XGloss has obtained Red Dot Award: Product Design 2016

For more information, visit www.dekton.com.

COURTS MEGASTORE TRANSFORMED – A REDESIGNED EXPERIENCE CATERED TO THE MODERN SHOPPER

COURTS Singapore, the leading retailer of home electronics, IT and furniture products, has redesigned its flagship Megastore in Tampines, creating a brand new immersive store experience designed around the needs of Singapore homeowners and modern apartment living.

With the official grand opening on 11 November, the COURTS Megastore offers 136,000 square feet of experiential areas, services, extensive range and affordable deals over three floors – underscoring COURTS' commitment to better living at better prices. In conjunction with the Megastore makeover, COURTS also unveiled its newly relaunched online store (www.courts.com.sg), seamlessly unifying the offline and online shopping experience for an omni-channel reach. The webstore is the largest in COURTS' store network to date, offering over 17,000 SKUs. Shoppers now enjoy a completely refreshed intuitive navigation, search and faster check-out experience – all with the added option to click and collect in store. The relaunched COURTS store augments the transformed retail experience in the physical stores, delivering the ultimate in 'bricks and clicks' shopping.

Dr Terry O'Connor, Group CEO of COURTS Asia, said: "The Megastore redesign marks a significant milestone in COURTS' transformation, as we cement our promise to customers to offer them more for less. We are making good living and great in-store experiences accessible and affordable to all Singapore homeowners – a vision that we've stayed true to since we first opened in Singapore 43 years ago.

Augmented by the relaunch of our e-commerce platform with the largest range amongst our stores, the new Megastore heralds a fresh chapter in retail evolution by integrating best-in-class retail practices to create a unique, experiential shopping experience across online and offline touchpoints. We want shoppers to fall in love with the new COURTS, and to rely on us as their onestop destination for their home as we transform with their changing needs." Megastore Delivers the 'Better Living, Better Prices' Experience As COURTS' flagship store, the new Megastore stands as an aspirational hub featuring the latest instore experiences, dedicating a majority of its 136,000 square feet to experiential retail space.

It is part of COURTS Singapore's S\$10m investment into a series of store refurbishments for the financial year to reinvigorate the shopping experience. Brand new retail concepts and experiential areas create innovative touchpoints for shoppers who want to learn more or interact hands-on. In conjunction with the reopening, COURTS is launching its new brand slogan 'Better Living, Better Prices', reiterating its commitment to affordability without compromising the shopping experience.

"The COURTS Megastore transformation is the result of a year of planning and two months of ongoing renovation work, combining the expertise of the commercial, visual merchandising and store operations teams to respond resoundingly to what



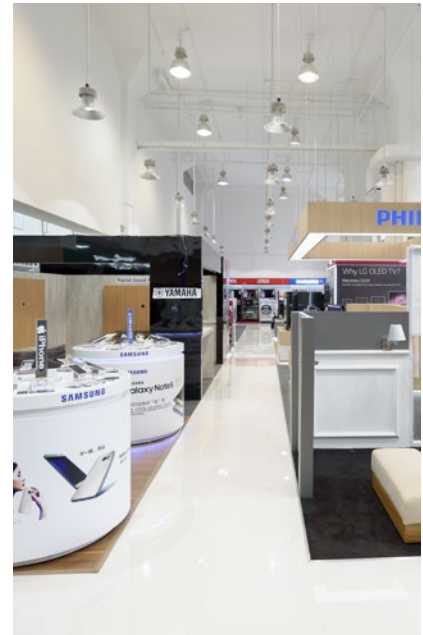
today's modern apartment owner desires from shopping for their home. We've curated every aspect of the shopping journey – from online integration, new range catered to today's lifestyle and smart technology trends, complementary home solutions, to an unprecedented degree of furniture customisation with no price premium and competitive three-week delivery. The best of every furniture, IT and electrical brand is showcased at our flagship store, with a host of new brands brought on board, at the unbeatable prices customers have come to expect of COURTS," shared Mr Ben Tan, Country CEO of COURTS Singapore. F

urniture Transformation – New Stylish Collections at Wallet-Friendly Prices International styles meet local prices with the expertise of a new buying and visual merchandising team with decades of experience in furniture, fashion, interior design and visual merchandising. COURTS Home has curated four new seasonal sofa styles – Natural Craft, Metropolitan, Modern Luxe and Industrial Loft – to revitalise the current collection.

Shoppers can grab a free cup of single origin artisanal coffee from MO Café with every furniture consult. With one in four pieces being multifunctional or space-saving, COURTS Home furniture has been tailored for local apartment sizes and needs, and sourced to be 10 to 30% more compact. Balcony furniture with indoor-outdoor appeal is currently seeing an uplift in demand, and is now available at COURTS in new climate-friendly and weather-resistant materials.

For more information, visit www.courts.com.sg.

AUDIO HOUSE LAUNCHES SINGAPORE'S FIRST-EVER COMPLETELY CASHLESS ELECTRONICS SHOWROOM



In 2004, Audio House was the first to offer "7-day Money-back guarantee" with no questions asked in the electronics industry. Today, Audio House, a homegrown electronics chain in business for over 20 years, has made a bold move to be the first in market to challenge the market (including all online and offline competitors) & offer electronics at up to 20% rebate on top of the lowest prices in Singapore. Basically, Audio House promises a price match with any competitor's price and an additional extra \$20 cash back with every \$100 spent storewide.

Audio House will also revamp its entire showroom and payment system to bring forth a whole new shopping experience to its customers with a completely cashless payment concept. They are Singapore's first to go completely cashless.

In August 2016, Audio House downsized to just one outlet at Bendemeer Road, closing down their 50,000sqft store at Liang Court. Many thought it is shrinking its business with this move. However, the company is actually planning to pass these cost savings to its customers and revamp its business model, converting its only flagship store at Bendemeer into a showroom offering 100% cashless payment solutions. With these moves,

Audio House is expecting to lower its operating costs significantly, in turn passing these savings on to its customers. Thus allowing Audio House to offer electronics at up to 20% lower than the lowest prices in Singapore.

"It is very difficult to challenge the market with the lowest price and offer an additional up to 20% rebate to all customers. With the cost savings from this campaign, we are able to pass these savings directly to our customers." Says Mr. Alvin Lee, the Managing Director of Audio House.

100% Cashless Payment System

Customers can visit Audio House's showroom to check out the latest home electronics, touch and feel them, as well as speak to the sales promoters about the specifications and more. After deciding on their purchases, customers can then make purchases via Audio House's e-commerce platform, with arrangements of delivery and payments also completely done online.

High Efficiency with Newly Revamped Automated POS System

Audio House has invested around \$500K over 3 years to create a whole new e-commerce platform that provides information on sales promotions, stock availability, delivery and more, with

information feedback from its back-end system. With this platform newly launched, Audio House expects to increase staff efficiency and productivity as stocks management are more efficiently done, syncing both online, back-end as well as delivery service directly. Customers looking to shop online can also expect a more efficient and accurate experience, as stock availability, prices and promotions are reflected in real time.

Operating hours at Audio House will also be shortened. Previously opened from 11am to 9pm, the new retail hours will now be from 12.30pm to 9pm. With Audio House's e-commerce platform, however, customers can browse and purchase the lowest-priced electronics 24/7.

Audio House challenges the market + offers up to 20% rebate

If a customer finds the same product cheaper elsewhere (be it online or offline in Singapore), they can bring the photo proof to Audio House showroom where Audio House will match that price immediately. On top of matching the lowest prices, customers are given up to 20% rebate. Check out the examples below.

For more information, visit www.audiohouse.com.sg.

CELEBRATING THE OPENING OF THE HOUSE OF W. ATELIER



W. Atelier has certainly delivered on its promise to be bigger and better as it reopened the doors of the newly renovated Bukit Timah Showroom to welcome close to 100 guests last night. Aptly named the House of W. Atelier, it was definitely a sight to behold as guests took in the new space and the emotions it evoked – luxurious yet homely, comfortable yet elegant, stylish yet functional. The evening kicked off with guests sipping on cocktails and feasting on tasty morsels prepared directly onsite at the live kitchen from SieMatic. As guests mingled in the various rooms of the House of W. Atelier, it was clear that the House of W. Atelier was not your typical showroom. Designed to mimic the layout of an actual house, guests were treated to the intimate experience of literally being hosted at a dinner party in a home.

In his opening address, Mr. Gani Atmadiredja, Managing Director of W. Atelier, warmly welcomed guests to the House of W. Atelier – the second experiential showroom to be launched by W. Atelier this year. Mr. Gani Atmadiredja also announced W. Atelier's latest partnership with My Turn To Host (MYTH), a holistic culinary studio that imparts the art of cooking, baking and hospitality. In a move towards customer empowerment, this partnership will serve to benefit customers of W. Atelier through various workshops and activities that will be conducted by MYTH exclusively at W. Atelier showrooms. Representing Republic of Fritz Hansen and SieMatic, both of which have their flagships located within the walls of the House of W. Atelier, were Mr. Dario Reicherl (CEO Asia & Middle East, Fritz Hansen) and Mr. Matthias Weiss (Export Sales Director, SieMatic). Mr. Dario Reicherl painted quite the enigmatic figure but his passion for Fritz Hansen and W. Atelier was evident in his address. Likewise, Mr. Matthias Weiss shared Dario's sentiments regarding SieMatic and the House of W. Atelier.

Flying in directly from Barcelona just one day prior to the opening of the House of W. Atelier was Ms. Nina Maso, joint founder and publisher of Santa & Cole – an independent editor of household lighting that hails from Barcelona. Lighting is without a doubt a deciding factor of the ambience of any room, and this was evidenced by the specially selected lighting by Santa & Cole that gave many a room in the House of W. Atelier a specific desired effect. The House of W. Atelier covers all aspects of luxury home furnishing and one can expect no less from a company as established as W. Atelier.

Some highlights include the Series 7 chairs from Danish furniture design company, Republic of Fritz Hansen; premium European designer kitchens from SieMatic; the Cavour writing desk designed as an homage to Carlo Mollino (1949) from Zanotta; a walk-in closet made in Italy from Lema; sophisticated lighting from Santa & Cole; and unique handblown glass chandeliers from Lasvit. Before the night drew to a close, guests gathered for the final segment of the night: the lucky draw. The prizes were no less attractive than items on display in the House of W. Atelier and three lucky winner walked away with the coveted prizes worth more than \$3,000 in total. They are: a Grand Prix chair designed by Arne Jacobsen from Republic of Fritz Hansen; a Caravaggio table lamp designed by Cecilie Manz from Lightyears; and a Basello coffee table designed by Achille Castiglioni from Zanotta. At the end of the night, guests left with no doubt in their minds that W. Atelier has once again raised the bar in the fine art of luxury home furnishing, and empowering customers in terms of experience and product offerings.

For more information, visit www.watelier.com.

GLOBAL LIGHTING ASSOCIATION ELECTS RUSSELL LOANE AS NEW PRESIDENT

At its November 2017 Board meeting Mr Russell Loane was elected President of the Global Lighting Association. He takes over from retiring President Mr Jan Denneman from Lighting Europe, who led the Association since its inception in 2007.

Russell Loane brings a long experience in the lighting industry to his new role. Based in Australia and active in the lighting industry for 40 years, he chaired Lighting Council Australia, the peak body for Australia's lighting industry, from its formation in 2007 until last year.

The Australian Government recognised Mr Loane's contribution to the lighting industry by conferring an Order of Australia award in the field of illuminating engineering in 2013. Mr Loane said a high priority in his new role will be to oversee implementation

of the Global Lighting Association's Strategic Roadmap for the lighting industry. The Strategic Roadmap, in final stages of preparation, sets ambitious goals for the industry based on acceptance by stakeholders of the benefits conferred by modern lighting beyond vision and energy efficiency.

Another goal is to facilitate the formation of a lighting association representing the ASEAN region. At the same GLA Board meeting Mr Chen Yansheng, President of the China Association of Lighting Industry (CALI), was elected Vice President. Global Lighting Association The Global Lighting Association is a grouping of peak national and regional lighting associations representing over 5,000 lighting manufacturers and US \$75 billion annual sales.

For more information, visit www.lightingcouncil.com.au.

SUCCESSFUL LAUNCH OF AXOR UNO & HANSGROHE KITCHEN SINK COMBINATIONS



10 November 2017 was a significant date for Hansgrohe Singapore with the launch of the AXOR Uno collection and the hansgrohe kitchen sink combinations to the media and guests from the real estate and design industry. It also marked a momentous milestone as it was the first time the hansgrohe brand made its foray into the kitchen sink segment with the new innovative and sophisticated kitchen sink combinations.

Exclusive Preview for the Media

40 media guests from regional and local key media attended the exclusive preview of AXOR Uno and hansgrohe kitchen sink combinations at Hansgrohe Boutique from 2pm onwards.

Upon arrival, they were invited to create their shower gels, first choosing from four

specialty curated selections – "Refresh", "Clarity", "Tranquil" and "Dream" based on their personal preferences. Inspired by Hansgrohe's renowned reputation as one of the leading manufacturers of showers, this activity was specially designed to encourage guests to concoct their shower gels for a relaxing and enjoyable shower after a long day of hard work.

The guests were then guided on creating these concoctions by adding ingredients, including aloe vera gel, essential oil and a moisture-restoring agent, and mixing them together into an AXOR shower gel bottle, which they were delighted to bring home!

Media guests were also welcomed to the calligraphy booth, where they could request for quotes or phrases to be inked beautifully for them by a calligrapher. From the long queue at the booth, it was clear that the guests really enjoyed the calligraphy session!

The guests were treated to a wide assortment of delectable canapes, which promised to delight their palates. The canapes included wild mushroom quiche, tomato and mozzarella caprese, yuzu prawn with nori & bonito flakes and duck confit.



Mr KC Lee, Managing Director, Hansgrohe Singapore, delivered a short welcome speech to the 40 media guests, followed by a presentation of the new

The media was invited for a showroom tour to view the newly launched collections, and from the enthusiastic and excited expressions of the guests, the media launch of the new AXOR Uno and hansgrohe kitchen sink combinations was indeed a resounding success!

Cheers & Beers with Hansgrohe's trade guests

By the evening, the Hansgrohe Boutique was beautifully transformed into a dazzling venue, promising a night of endless fun for guests from the real estate and design industry. About 200 guests graced the Cheers & Beers event, in honour of the strong unwavering support from these customers. The event was helmed by the emcee, media multi-hyphenate Angela May.



A myriad of fun-filled activities awaited the customers that evening, including a hansgrohe branded popsicle booth with delectable popsicles in hazelnut, pistachio and mango flavours just to name a few. Guests were invited to select their desired ice cream flavours and their preferred toppings for a bespoke popsicle experience, just like how AXOR offers customisation of products, ranging from special PVD finishes, lengthening of products as well as inscription of emblems and logos.

Customers were also excited to take part in the mini games prepared for them, including Galaxy Darts, Beer Ring Toss and Wire Name Art.

A wide array of palatable food, including live carving station, awaited the customers while they enjoyed the night networking with German beers. The emcee, Angela, took the opportunity to share about the latest AXOR Uno and hansgrohe kitchen sink combinations and invited the guests to view the newly minted displays in the showroom. The lively event ended with the grand lucky prize draw, where the 1st prize winner walked away with the AXOR Uno Select basin mixer retailing at SGD 870.70.

For more information, visit www.hansgrohe.com.sg.

KON UNVEILS AN INTELLIGENT KITCHEN FAUCET, DESIGNED FOR CONVENIENCE WITHOUT COMPROMISING ON STYLE



KON intelligent induction kitchen faucet is a set of functions including essential dynamic control, timely induction and mechanical hand control. It allows the opening and closing of water flow by waving induction control or timely control while keeping the traditional mechanical switch handle.

With wave control, users can wave their hands gently to turn the faucet on or off without touching it. With features such as a timely induction control, infrared induction, better ease of use, the top trait is its handsfree experience. The mechanical handle that controls water flow and temperature is easy to use and easily switchable between the water column or shower spray. The humanization of the universal rotating design makes it easy to use and twist as the user wishes.

For more information, visit www.kon.com.cn.

SWISS BATHROOM SPECIALIST LAUFEN EXHIBITED AT EUROPE'S LEADING HOTEL DESIGN EVENT, SLEEP, AT THE BUSINESS DESIGN CENTRE IN ISLINGTON, LONDON

With over 125 years of design heritage, Laufen have proved themselves to be a valued contributor to a number of outstanding hospitality projects around the world. At this year's Sleep Event, the brand showcased Laufen's capabilities and demonstrated their commitment to provide a professional and consultative approach that focuses on adding real value. This can be seen in the spirit of collaboration and how Laufen's expertise is able to take bathroom solutions within the hospitality sector towards new and creative directions.

Bespoke

The bespoke category is evolving and Laufen's expertise and passion for design puts them at the very forefront of this sector. Their deep knowledge of ceramic bathroom products enables the brand





to provide authentic and customized solutions in bespoke that go above and beyond expectation. Delivering a luxurious design aesthetic whilst providing the very best in functionality and innovation, Laufen continues to turn the most challenging concepts into reality, working closely with interior designers and architects to bring together the choice of standard products with authentic customized bespoke pieces.

SaphirKeramik

Laufen presented the next chapter in the evolution of their ground-breaking material SaphirKeramik - a unique, revolutionary ceramic material, which has all the hygienic advantages of traditional bathroom ceramics. The material allows design to be much thinner, more defined, and extremely robust. This enables for innovative product design using simple architectural lines, slim rims and thin walls to bring ceramic to different forms and semblance.

Cleanet Riva

The latest design success story Cleanet Riva was showcased. Cleanet Riva is a premium WC with intuitive and sophisticated shower functions that combines supreme luxury with perfect hygiene. This innovative shower toilet offers unparalleled design, combined with intuitive, easy-to-use technology. It is the world's first integrated shower toilet with a completely closed ceramic body and has already won several high-profile international awards for its striking design by Swiss designer Peter Wirz.

Laufen's International Team were there to personally welcome visitors and share Laufen's inspiring case studies, both in core collections and bespoke products, which are enhancing the identity of the hospitality sector across the world.

For more information, visit www.laufen.co.uk/en.

BACK TO THE FUTURE

ROUND TIGER BRONZE WALL MIXER

by **Meir Australia Pty Ltd**
www.meir.com.au

A stylish method to control both temperature and water flow, the round tiger bronze wall mixer is perfect for any area of the home, be it shower, kitchen, bathroom or laundry.



NEWTON WASHBASIN

by **Maison Valentina**
www.maisonvalentina.net

Newton is an outstanding moment of inspiration. A luxury statement piece created to fulfil the needs of clients that are looking for the best in contemporary furniture design mixed up with luxurious details and high-quality materials. Newton washbasin is a standout piece of international desire that distinguishes itself from all the other designs by its futuristic forms.



GIANA BASIN MONO

by **Smiths Briten**

www.purebathroomcollection.co.uk

The brand new Giana Basin Mono with pop up waste from The Pure Bathroom Collection is ideal for contemporary bathrooms or as an update to modernise a traditional suite.

ACADEMY 5 LIGHT PENDANT

by **där lighting group**

www.darlighting.co.uk

Perfect for use over kitchen islands or dining room tables, the ACADEMY 5 light box Pendant has a matt black ceiling plate and frame with clear glass panels. This product looks especially good when used in conjunction with vintage style lamps, available to buy separately. This pendant is supplied with 150cm of cable and chain and is fully height adjustable at point of installation.



SINKS

by **Black By Design Ltd**

www.black-by-design.co.uk



The Moon Toilet Brush from Aquanova is understated yet stylish and cleverly combines the starkness of stainless steel and the beauty of polyresin, a material both durable and virtually unbreakable. The toilet brush and hygienic handguard, which cleverly forms the lid of the brush holder, are made from stainless steel. This fits snugly into the rectangular polyresin holder ensuring that the toilet brush is concealed and creating a modern, stylish bathroom accessory which will look good in most bathrooms.

EVA SOLE SEIFENSPENDER

by **einrichten-design**

www.einrichten-design.de

Introducing the soap dispenser soap dispenser by Eva Solo – matt stainless steel and an extravagant form! Fill the soap dispenser with detergent and you would have won a great eye-catcher; after all, detergent bottles are not usually the design highlights. The liquid soap dispenser is made of brushed stainless steel and measures 5 cm long, 9 cm wide and 18 cm high.



FRONT LOAD BIG DRUM WASHING MACHINE

by **Hitachi**

www.hitachi.com.sg

Designed and made with the finest Japanese workmanship and cutting-edge technology, the Front Load Big Drum Washing Machine is a washing machine and dryer all in one that promises to save energy and water as well as reduce the time one has to spend drying and ironing clothes. Combining groundbreaking technologies developed exclusively by Hitachi – Auto Self Clean, Heat Recycle Drying, Wind Iron, and Steam Iron – the 10kg washing machine forms one intelligent system that brings unparalleled convenience to users.



GEMELLI BASINS

by **Johnson Suisse**

www.johnsonsuisse.com.sg

Made of superior cermaic that stands the test of time of strength, the Gemelli basin is styled in an innovative, space-saving design. It comes in two shapes (round or square) and is anti-scratch, thanks to its quality glaze. Each Gemelli basin comes with a lifetime warranty against manufacturing defects.

EXPLORING BRAVAT'S AFFABILITY FAUCET

Text & photos by Bravat

Fancy bathroom products that are not only fabulously extravagant but also cost-effective? Cute BRAVAT's Affability range! Not only was it awarded the prestigious 'Red Dot' prize for its sleek design, it is a product that aims to as cost-efficient as possible.

The spout has been lengthened and up tilted to enlarge the washing area and raise the spout level. This design effectively relieves the pressure on the users' cervical vertebra while forward bending towards the spout.

'Affability' is modern and aesthetic, abiding by dimensions to Da Vinci's Golden Cut. It is a tasteful addition to any bathroom. The lengthened spout has also been up tilted for 10 degrees, freeing up more space for the basin.





The aerator of Affability is easy to clean, a trait not easily prioritized in its market. Without any additional assistance, user can effortlessly get rid of the limescale using only one finger. The splash back is minimized as well, allowing for a tidy experience.

'Affability' saves up to 30% of the water as well and comes equipped with a 10-year warranty. The cartridge is a top-grade product originally imported from abroad. The product enjoys 10-year warranty and free replacement for any defective product.

Affability adopts the world's leading "lead-free" technology, making your life carefree for lead poisoning. Every Affability product went through the strictest NSF standard and Act AB1953.

Bravat truly embodies its belief that high-quality products will lead to a better-quality life.

For more information, visit www.bravat.com.



THE TOILET EXPERIENCE IN CAMBODIA

Text & photos by Econflo



Formerly underdeveloped country Cambodia has officially departed from the list of least-developed countries and upgraded its status to become a newly-minted, middle-income country.

Which is why it is surprising that in spite of its developing infrastructure and limited technology, it spearheads the field in one area - the common toilet.

The country is very advanced in terms of design and technology on the toilet. Latrines in both in commercial spaces and in the home are every bit as fancy as their European counterparts.





Cambodia attaches great importance to the construction of toilets. They also have high demands on the quality of the lavatories. In fact, inspect closely and you will realize that even the common toilets in Cambodia employ brands from Japan and Germany. It is affirmative of the importance that this country places on its bathroom experience.

Econflo Systems is home to a combination of quality bathroom products and kitchenware. Econflo Systems is a distributor and retailer of top European kitchen and bathroom brands and boasts of over 30 years of experience in Singapore. Its products are installed on numerous residential and commercial projects in Singapore.

Today, Econflo Systems brings its team of professionals and innovative solutions to Cambodia for the next two years. With 15 top European brands under its belt, Econflo Systems' high standard of quality will doubtlessly meet, or even exceed, the needs of Cambodian properties or commercial kitchens.

For more information, visit www.econflo.com.



100 YEARS OF ROCA

Text by Roca
Photos by Mindy Tan

ROCA celebrates its 100th year of bathroom brilliance in style at the BNP Paribas WTA Finals Singapore, where Roca has been the top sponsor for the past 4 years. We spoke to **Josep Delicado, Managing Director of ROCA Singapore and Malaysia**, about this monumental year for ROCA. He shared insights on the brand's future, his take on upcoming trends as well as a summary of ROCA in WTA 2017.

What is your favourite trait of a bathroom trend that Roca spearheaded?

Throughout these years, Roca saved its consumers millions of litres of water. We have always been trying to reduce water consumption. Do you remember big, bulky 19-liter flush systems back in the day? Now, we've narrowed down to efficient 3 or 4 litres per flush. Multiply this by the number of times you use the bathroom, by the number of bathrooms, by the number of families, and by all these countries. Over these years, the most relevant trait continues to be water-saving and ROCA continues to be at the top of this movement.





What do you think is Roca's true belief that has been upheld over the years and will continue to uphold?

ROCA has contributed to the evolution of bathroom spaces. Through our products, we have given millions of families' access to better hygiene and sanitation, without compromising design and comforts, while keeping a keen sense of respect to the environment in our design.

I want to highlight Roca is a family owned company. It is not a listed company and it continues to be powered by that entrepreneurial spirit, coupled by our strong corporate culture and ethics.

Our most important belief is in our long term vision. All the decisions that the company makes is for the long term, with a focus to always re-invest, to pass a better company to the next generation of shareholders, employees, suppliers and customers. This remains our belief till today.



What exciting happenings are in the pipeline for Roca this year (2018)?

We are exposed globally so we are planning different launches in the different continents' markets. There are always challenges in terms of economy, demographics and stage of development that differs country to country. Our key points to touch on could be new city models – these cities are evolving from globalization. We aim to implement digitalization in all fields and in the ways of communicating to our customers.

Another thing is the innovation in different fields, such as materials. Through our R&D, we are able to introduce sleekness into the bathroom. Before, due to technology's limitations, basins were bulky. Now, you can produce one with a width of just 5mm, thanks to the new materials. We will continue investing in R&D to bring innovation to the market.

Of course, water-saving is always our theme. Whenever we launch in new cities, we primarily aim to reduce water consumption. At the end of the day, we work with water – it's in the shower, the toilet, the bathtub – so this attribute is always in our mind.

Another interesting development is the combination of different materials and finishes. We used to always see chrome finishing in faucets and fittings but now, we're conceptualizing combinations of different materials in new finishes such as brass, copper, gold.









What bathroom trends are all the rage right now (2018) and what do you expect to see in the year ahead (2019)?

We expect to see a lot more innovation in terms of materials and finishes, as well as the integration of electronics in bathroom products. In Japan, Korea and China, there is an uptrend of shower toilets. It uses a bidet with a smart toggle – you can control the temperature, the pressure and the inclination of the water. This is a trend that is definitely here to stay. We have begun launching in Europe and the response has been positive, due to the products' novelty and well integration with design.

But how do you capture trends? For ROCA, we have different activities that we involve young designers with. We have different worldwide contests where we would invite young designers to design the bathroom of the future. Backed by a jury of famous designers, we give out an annual award in London to the top design of the year.

Here in Asia, we also have a contest specific to Hong Kong – the One Day Design challenge. We invite young designers to an open space, where they then spend the next hours conceptualizing new solutions to the bathroom. Their creative capacity for ideas is amazing. I've seen impressive projects that, while difficult to launch on a massive scale, involves very interesting concepts.

At the end of the day, ROCA collaborates with different companies and universities on projects to integrate electronics in the bathroom or new materials. This is always in our mind – incorporating innovation into new products.

What has Roca accomplished for WTA in 2017?

This is our 4th year doing this sponsorship with Roca. We started in 2014, the first year that WTA was launched in Singapore, and we have been collaborating seamlessly since.

A sponsorship at such a high-level sports event represents an opportunity for ROCA to provide a global visibility for itself. This event is worldwide and involves hundreds and hundreds of televised hours across the world – in USA, Europe, Asia, Africa, etc. This brings a strong association of the brand.

Aside from that, it also presents us the opportunity to bring together our business partners, distributors, architects and designers across the region and offer them a gathering, to reconnect in a relaxed ambience. We get to bring them to Singapore for the local experience too! All in all, it is a great platform to engage with our customers.

For more information, visit sg.roca.com.

ROCA'S BEIJING GALLERY

Text by I-mad.com

MAD Architects has completed Roca's Beijing Gallery in Dongzhimen, near the Beijing East Second Ring Road. The project consists of an unobstructed gallery space that opens up to its urban environment; behind double-height glazing, the interior walls of both of the gallery's floors, finished with a screen of LEDs, become a new façade for the city.

"I hope that the Roca Beijing Gallery can become a positive, vivid corner of the urban community, connecting people and city in the simplest way," says Ma Yansong, MAD Architect's founding principal.

The multimedia surface is intended to provide spectators accessible, vibrant glimpses into





projected realities that challenge their senses and their rectilinear environments -- creating an atmosphere that is a fluid mixture of light, movement, and people.

The content of the screens, such as simulated depictions of people using the showrooms, seemingly unaware of their visitors or any observation, playfully connects the Roca Beijing Gallery's internal spaces. An intentional ambiguity of "interior" and "exterior" is perceptible for those passing the gallery, resulting from the movement of nearby pedestrians and the silhouettes of those inside, a movement further distorted by the LED screens.

The gallery also projects images of nature, simulating different weather conditions and seasons--such as the falling of rain, or the emulation of sunshine to address a smoggy day. Designed by art critic and curator Jérôme Sans, the installation changes with the passing of seconds, minutes, and days.

In designing the sixth of Roca's global galleries, MAD has joined a series of renowned designers, such as Zaha Hadid Architects and Charles Ferrater, who have designed galleries for Roca in the past.

For more information, visit www.roca.com.

KITCHEN OF THE FUTURE by Silestone

Text & photos by Silestone



Chef Andoni Luis Aduriz

The Silestone Institute, part of the Cosentino Group, has worked with leading experts to produce an insightful report which predicts the characteristics of the kitchen of the future. The report, entitled 'Global Kitchen: the home kitchen in the era of globalisation' is the result of a collaboration with 17 distinguished experts from the worlds of design, cooking, domestic technology, sociology, nutrition and sustainability. In addition, a survey carried out in over 800 kitchen studios across the world provides data on the importance consumers afford to this room in their homes.

Key experts included chefs Andoni Luis Aduriz (**Michelin in Mugaritz), Gaston Acurio, Harvard, anthropologist, Richard Wrangham, architect Piero Lissoni and industrial designer Patricia Moore.

Santiago Alfonso, marketing vice president for the Cosentino Group says, "Global Kitchen is an international project providing valuable insights into the kitchen of the future and aims to become an essential reference tool for professionals and consumers. It creates the opportunity for multidisciplinary reflection to analyse the effect of globalisation on kitchen architecture and design, to determine how this space will develop over the next 25 years."

Key predictions in the Global Kitchen report include:

- The kitchen will be a hyper-connected, multi-functional space for work, leisure, health and relaxation.
- It will incorporate techniques and smart devices normally found in professional kitchens such as vacuum cooking and packaging.
- It will further cement its role as the 'centre of the home'; the largest and most invested room in the house.
- The kitchen will develop as a multi-functional space in all countries and is expected to disappear as an independent room.
- Its design will not only take aesthetics and function into account but also emotional value and it will strengthen its use as a space for relaxing and well-being.
- Connectivity and smart appliances will be managed from mobile and wearable devices and will not only make shopping and laundry easier, but ensure endless access to information from the Internet of Things.
- The worktops will be able to cook, make calls, broadcast TV or provide access to the internet. They will be height adjustable, contain recipe databases where chefs will guide the user through the method, ingredient information and be able to weigh food.
- The refrigerator will offer permanent access to nutritional information on screens.

- They will be sustainable, with appliances solar powered and will be aligned with 'Multi-R' thinking – Rethink, Redesign, Repair, Reuse, Remanufacture, Recover.
- Intelligent lighting will be variable to match the time of day, mood or the type of food being cooked.

Forecasting and Sales Experts' Opinions on the Future of the Home Kitchen

842 kitchen professionals from eight countries (Australia, Brazil, Spain, United Kingdom, United States, Italy, Portugal and Sweden) took part in a survey to supplement the Global Kitchen Report. The report assesses the evolution of kitchen space in terms of use, design and equipment taking into account the respondents' proximity and direct contact with the end user, as well as their experience and knowledge of the sector.

Highlights from the survey include:

- 87% of respondents said that the kitchen would become more relevant as an activity and meeting place in the house. (In many countries, the kitchen is a separate room).
- 5% said that it will be a single space combining dining and living rooms.
- 3% said it will be used to get together with family, to work and do homework (60.9%) and surf the internet (62.4%).
- 1% expect cooking will be directly on the work surface.
- 7% predict that the work surface will integrate a control panel for appliances with access to the internet and device connection.
- 3% imagine the work surface will incorporate weighing scales and nutritional analysis.
- Australia and Brazil agree that the new cooking methods will be the most important development, while the UK and Italy prefer smart appliances. In contrast, Spain and the US value connectivity above all.

For more information, visit www.silestoneinstitute.com.

5 Key Trends In The Kitchen of the Future

1 Technology boom: connectivity and smart appliances

- Managing appliances from mobile devices.
- Constant connectivity: IoT (Internet of Things) in the worktop, fridge, oven, kitchen robots, etc.
- New solutions to ensure hygiene and safety.
- Permanent access to nutritional information, on refrigerator screens, on worktop,...

The fridge will be the kitchen's control centre. It will inform us of available foods and their expiration date, automatically ordering from the supermarket when we're low on something.

The oven will feature sensors that will identify what is being cooked and will ask directly what and when to bake it.

Very large windows with natural light.

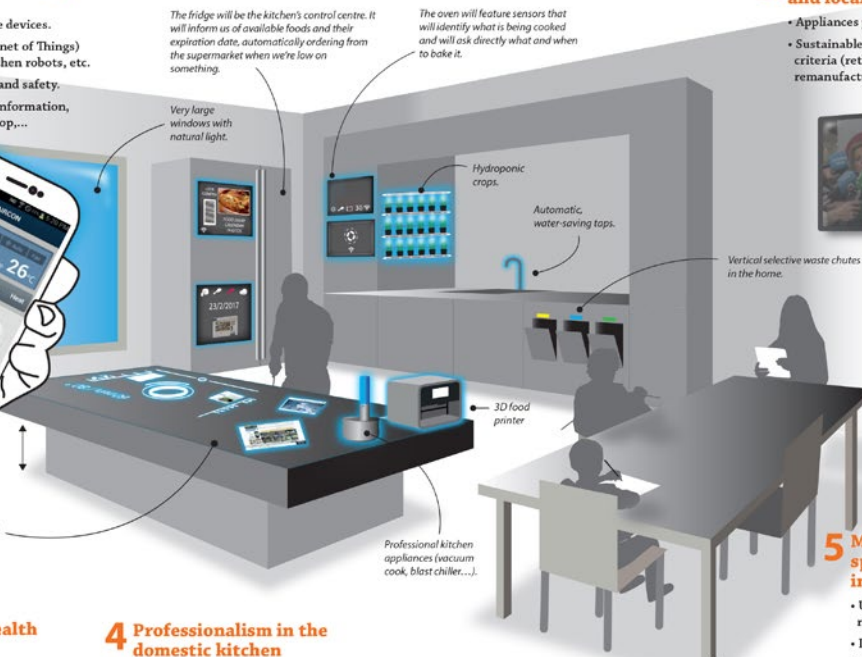
Hydroponic crops.

Automatic, water-saving taps.

Vertical selective waste chutes in the home.



The worktop height will be adjustable, allowing direct cooking on the surface and boasting built-in screens with recipe databases, ingredient information (weight, nutritional value...), etc.



Professional kitchen appliances (vacuum cook, blast chiller...).

3D food printer

2 Sustainability: eco-efficiency and locally sourced products

- Appliances powered by solar energy.
- Sustainable kitchen aligned with "multi R" criteria (rethink, redesign, repair, reuse, remanufacture, recover).



3 A space for personal health and well-being

- Variable lighting will allow colour changes to match the time of day, our emotional mood or the type of food we're cooking.
- Flexibility and ergonomics: mobile elements that adapt to the needs and improve the individual skills.

4 Professionalism in the domestic kitchen

- Techniques and appliances from professional kitchens (i.e., vacuum cooking and packaging).
- Great chefs share their expertise via video recipes or tutorials.

5 Multipurpose emotional space for family interaction and leisure

- Used increasingly as the central room in the home.
- It will be a place for watching TV, surfing the Internet, working, playing, relaxing,...
- Integrated with the rest of the home. No longer a separate space, it will open up to the dining room or living room.
- Adapted for all ages and moments of daily life.



MEGA BUILD

INDONESIA

The 17th Indonesian Dedicated Architecture, Interior Design, Building Exhibition & Conference

15-18

MARCH 2018

at **Jakarta Convention Center, Indonesia**

Co-located with:



OUR 2017 ACHIEVEMENTS

 **20**
Countries

 **37,276**
Visitors

 **30,000**
Sqm of exhibition space



 megabuildID
 MegaBuildExpo
 Megabuild Expo
 www.megabuild.co.id



13

POWER PACKED SEGMENTS

The perfect one-stop platform that showcase a full range of building materials, design solutions, systems and technology for the fast growing Building & Construction Industry in Indonesia.



CALL OUR REPRESENTATIVES



Mr. Eric Anthony
+62 21 2556 5003 / +62 878 7700 2211
eric.antonius@reedpanorama.com

Mr. Ricky Chandra
+62 21 2556 5028 / +62 818 418 483
ricky.chandra@reedpanorama.com

Mr. Nicky Marsab
+62 21 2556 5027 / +62 857 1019 7676
tjhua.nicky@reedpanorama.com

Organised by: 

Supported by: 

Media Partner: 



AQUAFLEUR by MINDTHEG

SURFACES

A SPLASH OF COLOUR

I am not a fan of block color walls. In Asia, most of the common homes are relatively small. Block colours, especially light hues, tend to make a space look smaller than it is. This is crucial in Singapore, where the constant heat could mean the occasional crack in the wall.

In cases like that, it would be ideal to have wallpaper! Not only could you just replace the affected area, it instantly brings a gasp of flair into any room. Any photo frames and accessories additionally serve to play up the dramatic undertones of the space. Not convinced?

Here is a selection of different surfaces, varying in styles and materials, which might inspire you into adding a brushstroke of colour into your home.

Text and photo credits mentioned in this article:
To the individual manufacturers



A room with green leaf-patterned wallpaper, a wooden armchair with a green cushion, and a side table with a plant.

A Million Leaves by Lime Lace

Set against a dark background, A Million Leaves Wallpaper- Dark by Carmine Lake, is a wide width wallcovering that creates a wonderfully layered canopy of stunningly intricate naturalistic leaves. Manufactured in the UK, A Million Leaves is a delightfully calming design that brings the beauty of the natural world to life.

www.limelace.co.uk

Shades of the Ocean by Pixers

Turquoise is a breath of invigoration and freshness. A color that took the runways by storm, to move to the living quarters with grace. In the light pastel version, it combines well with white and pastels, and its darker face is emphasized by turquoise and various hues of light blue. The mint patterns complete the arrangement of a child's room, living room or bedroom, filling the interiors with energy and a refreshing coolness. The wall mural presented in the photograph is printed on the self-adhesive wall mural, dimensions 300 x 250 cm.

www.pixers.us





TieTacs by Wallsauce

With over 30 years experience creating designs for apparel and swimwear, stationery and gifts, as well as homewares, Tigerfeet and Twig, know a thing or two about pattern! Inspired by fashion, culture and nature, Tigerfeet and Twig love all kinds of patterns from traditional and modern to even retro. In this exciting range, find stunning patterned wallpapers available in a variety soothing pastel colours. Ideal for all rooms around the home, hang a Tigerfeet and Twig wallpaper mural and add classic design to your decor.

www.wallsauce.com



Mountains Classic

by Sian Zheng

The Mountains wallpaper connects Chinese painting and European illustration styles to create a spectacular landscape of misty mountains and time-honoured Chinese houses, home to bears looking for their next adventure.

www.sianzeng.com

Scandi Leaf by Arthouse

Calm and relaxing, this retro leaf yellow print wallpaper will bring a subtle contemporary to any room. Use on a feature wall or throughout a room to create your perfect look. Has a glitter finish to catch the light. Perfect for living rooms, bedrooms and dining rooms. Bring your home to life with this incredible wallpaper.

www.arthouse.com



Scrapwood by Black by Design

Renowned Dutch designer Piet Hein Eek took inspiration from his own waste furniture when designing the fabulous Scrapwood collection. Due to the success of this range, three years later he introduced his new range, Scrapwood 2, which includes patterns based on beams, cross sections and plank sides. Featured here is the NLXL Scrapwood 2 Wallpaper PHE-16 which has a fabulous light reclaimed scrap wood appearance. Brilliant for a statement wall the realistic wood effect is achieved using high resolution imagery printed on superior quality non-woven back paper.

www.black-by-design.co.uk



Aquaflour by MindTheG

Aquaflour wallpaper captures the spirit of a beautiful meadow during an early summer with loads of wild flowers in bloom. A stunning selective of flowers is seen in full bloom, enlivening up any living space. The delicate pastel hues ensures nothing clashes and promises a soft viewing experience.

www.mindtheg.com





BARTSCH COTTON CLOUDS BLUE WALLPAPER

by **MINI MAISON**

Beautiful, grey-blue wallpaper with dreamy clouds floating through the sky. This cloud wallpaper is ideal as a nursery feature - the design is so beautiful you'll want to keep it up throughout their childhood. Bartsch wallpapers are printed on non-woven paper, using traditional printing techniques from the nineteenth century, to create luxe wallpapers that feel hand painted. They are easy to apply by yourself or by a professional, extremely durable and fade resistant.

www.minimaison.co.uk





HEGEMONE BP5706

by **FARROW & BALL**

Less rigid and defined than a classic floral pattern, each colourful spray within our Hegemone wallpaper is wonderfully optimistic and looks almost as if it has been cut from paper. Taking its name from the Greek goddess of fruit and flowers, the design blooms freely in all directions to bring your walls to life. Full roll width is 53cm/21", roll length is 10m, pattern repeat is 68cm/26 3/4", Available in 7 colourways.

www.farrow-ball.com





MONSTERA LEAF

by **WOODCHIP AND MAGNOLIA**

Fill your walls with a tropical vibe exotic monstera leaves on a chalky pink plaster background a perfect combination. Woodchip and Magnolia's wallpapers reach the highest EU fire rating; EN15102 / EN13501 and are consequently perfect for use in contract/commercial environments. Samples swatches are intended as a colour and texture sample only and may not show the full design repeat. Samples are 52cm wide by 22cm high.

www.woodchipandmagnolia.co.uk



THE **18th** CHINA XIAMEN INTERNATIONAL STONE FAIR

LEADING THE GLOBAL TRENDS

180,000 m² exhibition space
2000+ exhibitors from **56** countries
11 national pavilions
45+ World Stone Congress sessions
150,000+ visitors from **148** countries

Pre-register online for **Free** VIP Service

>>> www.stonefair.org.cn

March 6-9, 2018

Xiamen, China



+86-592-5959616

info@stonefair.org.cn

BATHROOM SPACES



COME TO THE DARK SIDE

Take a walk with us to the dark side.

The colour black has long been associated with luxury and understated class. It is tricky to find the balance in using black for the bathroom, particularly in small or under-lit settings. However, it becomes an extraordinary elevation when done right, promising to ooze sophistication into an otherwise ordinary space.

Pro-tip: If you're thinking of going big, find the optimal furniture placement where light (both natural and artificial) can easily circulate around the space, allowing it to be consistently lit. Think mirrors with integrated light, wide window panes and light ceiling colours to contrast.

Here is a selection of different bathroom spaces, varying in mood and style, enlivened by black.



10 Series

by Merlyn Showering

While minimalist in appearance, this beautifully crafted enclosure has the reassuringly impressive 100mm thick toughened glass which makes the 10 series the flagship of the Merlyn Series ranges. The silky smooth roller action of the 10 Series Sliding Door allows this large glass door to open and close effortlessly.

www.merlynshowering.com



Virtuose

by Decotec

At Decotec, each bathroom is the result of a unique encounter between you and your sense of well-being.

Decotec takes the time to listen, to understand, to detect the smallest hints of inspiration in order to reflect them in relevant, out-going and elegant furniture. Carpenters, painters, moulders - crafts and tasks carried out with a real passion is at the heart of the production site in Tuffé, near Le Mans. Decotec is today not only a reference to quality methods of generations with a shared passion of beauty and taste, but also to a flexible brand which adapts to the evolution of shapes and forms.

www.amaroni.com



Chromatherapy

by Frontline Bathrooms

This innovative chromatherapy and aromatherapy shower head with LED technology and wall mounted touch screen control has been designed to create an intense sensorial setting for the ultimate in relaxation. Using light and colour to reawaken the senses, the vigorous rain jet alternates with atomised water and the body jets invigorate both body and mind, whilst three special fragrances complete the ambience of intimate sensuality.

www.frontlinebathrooms.co.uk





Aquaglass+ Elegance Quadrant

by Frontline Bathrooms

The Aquaglass+ Elegance quadrant is made from 8mm clear glass with a minimalist frameless design and luxury square chrome on brass handle. Height of enclosure 2000mm. Please note this enclosure is NOT reversible.

www.frontlinebathrooms.co.uk



Starck

by Duravit

The new soft cornered, fine-edged square washbowl from Philippe Starck for Duravit is a refined and attractive design for the bathroom. The washbowl has a "dome" in one corner inside the washbowl on which the tap sits which, as well as adding to the character of the product, also allows the product to be fitted where space is limited.

www.duravit.co.uk



Consolle Aga

by Julia Marmi

Designed by Davide Vercelli and Angelo Dall'Aglio, the Consolle is optimized by strength, majesty, elegance in a few lines: the Aga sink made of Pietra Piasentina flamed with split edges is a unique piece made to fit best with each environment. As it is a customized product, it's possible to choose the sizes.

www.juliamarmi.it

Axor Citterio

by Hansgrohe

The beautifully designed Axor Citterio collection offers rich detail and purity of design with a perfect combination of strong lines and modern shapes, creating timeless classic design for your bathroom. The existing collection has been enhanced by the addition of three new single lever basin mixers and a bidet mixer with shining surfaces and precise, linear edges, plus a new showerhead and showerpipe. The tall, slim mixer exudes an air of elegance and is extremely easy to operate with an innovative combination of the classic high spout and a side-integrated joystick cartridge creating a new masterpiece for any wash basin. The aerator is completely integrated into the spout reducing water consumption to only 5 litres per min while producing a full voluminous jet.

www.hansgrohe.com.sg





Metropol

by Hansgrohe

Hansgrohe expands its comprehensive range of mixers for high-end private and hotel bathrooms with its new Metropol Classic line. The design combines clean-cut edges with gleaming surfaces, beautifully complementing elegant bathroom environments.

The graceful line of the mixer body sweeps down, widening into a square, opulent base: a characteristic feature of the hansgrohe Metropol Classic mixer range.

Traditional values and love of detail are reflected in the quality workmanship and the chrome and gold surface accents. This finish is created with the help of an elaborate PVD (Physical Vapor Deposition) process, which coats the product parts with the use of vapour in a vacuum chamber. PVD-coated surfaces are exceptionally resistant to scratches and corrosion.

www.hansgrohe.com.sg





SWISS CRAFTSMANSHIP

by **LAUFEN**

The visionary work with ceramics requires knowledge of substance, an experimental approach to it and the ability to translate the ideas into industrial processes. LAUFEN processes the delicate material with highest attention and passion, pay a little more attention to the detail and achieve best Swiss quality. More intelligent, larger, more effective, more forward-looking: LAUFEN always set their sights somewhat higher. This includes resource-saving handling and intelligent recycling even during the production process, as well as products that reduce the amount of water used for flushing. Every single toilet, every urinal and bidet is subjected to a vacuum test and checked for flushness. A thorough visual check after each stage of production guarantees that only perfect pieces are further processed in the production process.

www.laufen.com





TURTLE WASHBASIN

by **MAISON VALENTINA**

For centuries, Tortoise hard outer shell has the inspiration for different pieces, highly appreciated by its decorative purposes. The reason is its beautiful patterns and colors, which make this product unique. Black, grey and golden colors show a marvelous piece, contrasting with the golden tap and black legs. Use to create a better sense of space division in your ambiances.

www.maisonvalentina.net



BLACK AND GOLD

by **BOCA DO LOBO**

Like a jewel that reflects eternal beauty when it is contemplated, Ring is the mirror of the soul, which aspires to the sublime. Exploring the main function of a mirror, the richness of Ring lies within its reflection. Ring evokes an antique unreachable treasure that could only be found on the most remote place on Earth. Ring contains a mirror frame in black lacquered high gloss, with a minimalist line on the outside and another carved handmade on the inside. A precious piece of art with its interior made of refined carved wood as exquisite as its owner. Ideal for an unique and exclusive home, Ring will reflect elegance once it's on your living room or your bedroom.

www.bocadolobo.com



FREESTANDING MATTE BLACK BATH FILLER

by **MEIR AUSTRALIA PTY LTD**

This freestanding bath filler is elegant and sophisticated. The slim body and striking matte black finish will entertain your guests for years to come. Combine with a matte black mixer for a complete bathroom experience.

www.meir.com.au



INVISIBLE FIXING KIT

by **SANINDUSA**

Sanindusa has introduced an invisible fixing kit for wall hung wcs with additional advantages in installation. The fixing of the ceramic piece to the frame is done from the toilet seat fixing holes (top fixing). The application is easier, faster and therefore more economic.

Some of the components of the kit come pre-assembled in the toilet, which means an even greater gain in time, simplicity and cost. The aesthetics and design of the pieces benefit from the fact that the side walls are completely smooth, without holes, which makes them more attractive and easier to care for.

www.sanindusa.pt



PLAN

by **KEUCO**

With its roughly 500 products, the PLAN series from KEUCO is the most comprehensive bathroom furnishings concept in the world. The collection offers versatile solutions for both private and hotel bathrooms as well as public sanitary facilities. Thanks to its high aesthetic standard, the best functionality and outstanding quality, the PLAN collection has become a sought-after, contemporary classic among architects, planners and installers. With its expanded assortment of accessories, PLAN will continue to impress in future through a unique variety of alternatives and timeless design.

www.keuco.com



THE 23RD PHILIPPINE WORLD BUILDING AND CONSTRUCTION EXPOSITION



WORLD BEX

MARCH
14-18
2018
10 AM - 8 PM

WORLD TRADE CENTER METRO MANILA
SMX CONVENTION CENTER

SHAPING INNOVATIONS TOWARD SUSTAINABILITY

Organized by:

WORLD BEX SERVICES INTERNATIONAL

+632 656 9239

www.worldbex.com

info.worldbex@gmail.com



VERO AIR

by **DURAVIT**

Fitted into a cabinet with only the front part of the basin protruding, a semi-recessed basin is carefully crafted to fit into ledges or shelves, making it look like a continuous part of the bathroom furniture. They can come in different shapes and designs, with rounded or angular edges. They're ideal for any stylish, modern bathroom and can create a seamless look when incorporated perfectly with the design of your cabinetry.

For more information, visit the Econflo Systems showroom at #01-01 Haw Par Techno Centre, Lobby B, 401 Commonwealth Drive

www.duravit.com

ecobuild
southeast asia 2018

MiIE'18
MALAYSIA IBS INTERNATIONAL EXHIBITION

27 - 29 MARCH 2018 | 3 DAYS EXHIBITION

ICW
2018

26 - 30 MARCH 2018
5 DAYS CONSTRUCTION CONFERENCES

**KUALA LUMPUR
CONVENTION CENTRE
& CIDB IBS CENTRE**

**ACHIEVING
PEAK
PRODUCTIVITY**



HOSTED BY



ORGANISED BY



CO-LOCATED EVENTS



www.icw.my | www.ecobuildsea.com



KITCHEN SPACES





OUE Social Kitchen

OUE Social kitchen, Singapore's revolutionary communal cooking experience set in a retail space. Inspired by the way food brings people together like a universal language, OUE Social Kitchen is communal space designed for friends, families, and strangers to meet and cook at a common table. With no limitations to what is being served up, this new space is where the construction of ingenious food encounters and new conversations kickoff.

Styled by Smeg, the 4,000 square foot kitchen at the new Downtown Gallery features two VIP rooms and six standard stations, as well as two halal friendly stations, available for hire by the hour through a booking system via the Downtown Gallery mobile app. Users will have access to the full range of kitchen appliances from Smeg, such as state-of-the-art gas and induction hobs, ovens, microwave, fridge, wine chiller and coffee maker. Small appliances, baking essentials, cookware, crockery and cutlery are all provided by OUE Social Kitchen.

Created with flexibility and convenience in mind, consumers can choose to bring their own fresh

ingredients or purchase pre-packed ingredients either via the mobile app or from the counter to cook at OUE Social Kitchen. An in-house chef and staff will be stationed in the kitchen to provide assistance, cooking tips and clean-up services to consumers after their cook.

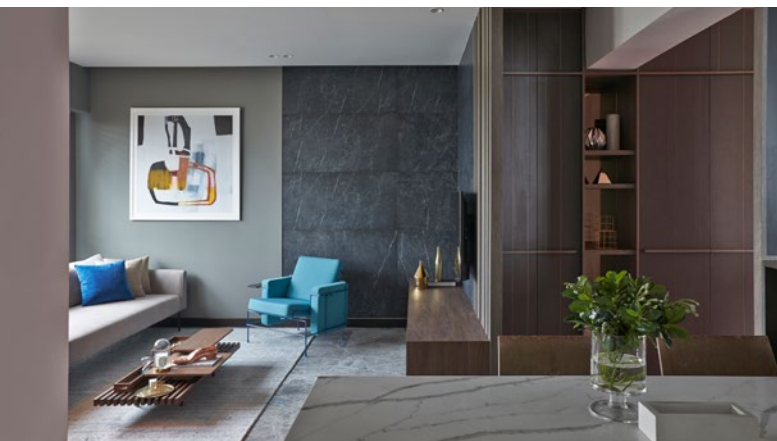
On the upside for service staff, cleaning up the kitchen never got easier at OUE Social kitchen. Food stains, spilt wine and sauces are easily wiped clean on their stain resistant engineered quartz surfaces. The Tuscany series of engineered quartz by Seasonstone Singapore, with its naturalistic marble designs, fits seemingly well with the interior stylistically pieced together by Index Design.

The upmarket design of this space by makes OUE Social Kitchen especially ideal for hosting corporate and private events. OUE Social Kitchen is open daily from 10am to 10pm located at #03-02/03, Downtown Gallery, 6A Shenton Way.

For more information, visit www.seasonstone.com.sg.



McNair 264



McNair 264, a timeless interior design with robust character and personality. Pieced together by Joey Khu Design, this once basic 4-room flat was transformed into a modern and luxurious space with the semblance of a boutique designer hotel.

Built with their belief that simplicity is the ultimate form of sophistication. Joey Khu Interior Design employs designs with pure forms, straight lines, touches of texture and colour that bring out the personality and character of McNair 264.

The engineered quartz kitchen countertop used in McNair 264, Olive (MP811) from Seasonstone Singapore, an intricately diffused background of olive and grey tones augmented with natural subtle white veins blends immaculately with the wood-finish design of the kitchen of McNair 264. Whilst their dining table is made from their Tuscany Series of engineered quartz closely resembling calacatta marble creating a luxurious dining experience in McNair 264.

The confidence that customers have in Joey Khu's design allows the design team to have freedom in expressing the materials used in their work. This creates design that comes with great detailing, yet achieving work that is not overly complicated.

Joey Khu's design philosophy is built from several modernist icons such as Frank Lloyd Wright, Le Corbusier, Ludwig Mies van der Rohe to name a few. Drawing inspiration from these modernist icons, Joey Khu transforms homes into visually powerful and intellectually elegant spaces.

Joey Khu Interior Design, 772A North Bridge Road, The Modules #04-09





INTELLIGENCE

by **KON SANITARY**

KON intelligent induction kitchen faucet is a set of functions including essential dynamic control, timely induction and mechanical hand control. It allows the opening and closing of water flow by waving induction control or timely control while keeping the traditional mechanical switch handle.

With wave control, users can wave their hands gently to turn the faucet on or off without touching it. With features such as a timely induction control, infrared induction, better ease of use, the top trait is its handsfree experience. The mechanical handle that controls water flow and temperature is easy to use and easily switchable between the water column or shower spray. The humanization of the universal rotating design makes it easy to use and twist as the user wishes.

www.kon.com.cn



VISION STANDALONE

by **RATIONAL**

A stand alone, multitasking, compact kitchen that can be adapted to meet the challenges of today's lifestyle. Measuring W1836mm x H2180mm x D760mm the Vision module can be seamlessly integrated into any space whilst still offering all the benefits of a contemporary kitchen. It comprises; storage shelves, pull out deep pan drawers, a sink unit, hob, extractor, microwave, dishwasher, fridge, and a pull out breakfast bar. It is available in all Rational's finishes (except glass) and is shown here in a combination of high gloss platinum lacquer and glass white satin.

www.rational.de



MAYOR

by **REGINOX**

The Mayor sink from Reginox takes control the kitchen worktop as it were. With two different dimensions the double kitchen sink is very functional, stylish and practical. The tapwing is suitable for the inclusion of a tap, soap dispenser or water filter. There are no welded or folded seams in the deep-drawn kitchen sinks. This means that the super sleek design goes hand in hand with optimum hygiene and makes cleaning and care so easy. The polished steel finish accentuates the tasteful design of the Mayor. Once again Reginox delivers everything that you could want from a sink.

www.reginox.com



15 - 18 March 2018
Jakarta Convention Centre
Jakarta, Indonesia



MEGABUILD INDONESIA 2018 is Indonesia largest Architecture, Interior Design and Building Materials Exhibition, organized by the industry for the industry. It will be the most comprehensive showing of the latest technology, solutions, materials and design trends to Indonesia's building & construction industry. It strives to give valuable experience during exhibition.

About MegaBuild Indonesia

MEGABUILD INDONESIA was launched in 2014, as a refreshed branding for Renovation and Construction Expo (RENEX) which was held annually since 2002. With the new branding of MEGABUILD INDONESIA, coupled Reed Exhibition portfolio of 34 Building & Construction exhibition worldwide, MEGABUILD INDONESIA aims to be Indonesia leading Architecture, Interior Design and Building Exhibition and Conference, organised by the Industry for the Industry.

In conjunction with Jakarta Design Week, organised by the Indonesian Institute of Architects (IAI), MEGABUILD INDONESIA runs over 21 concurrent seminars (with CPD points awarded for professional architects), making MEGABUILD INDONESIA the largest annual gathering of the entire industry of Building & Construction.



This exhibition has showed better improvement than last year, with more qualified visitors & potential buyers.

Mr. Witanto

Head of Marketing at HAVEEL, Indonesia



This is our first exhibition as a new player in Indonesia. Joining MegaBuild was proved to be our best decision this quarter. Many leads were met. For introductory market level, the appreciation was beyond expectation, thank you.

Mr. Bayu

Explora Playground



MEGABUILD Indonesia will be featuring 13 dedicated segments to cater to the needs of the industry where the market converges, making MEGABUILD Indonesia the perfect one-stop platform that showcase a full range of building materials, design solutions, systems and technology for the fast growing Building & Construction Industry in Indonesia.

Introducing BizMatch

BizMatch, Business Matching Program is an integral element of Mega Build 2017. It is an important tool to assist buyers and sellers to make their relevant connections and facilitate the necessary meetings, allowing them to maximize their networking opportunities at the event. Last year, Mega Build successful arrange 325 business meetings between buyers (local importers/distributors) and the international brands, first time in Indonesia (exhibitors)

Making relevant connections and meetings is the reason why MEGABUILD is the go-to event within the building & construction industry and we aim to value-add your experience and networking potential here.

BizMatch is an online tool that start to introduce relevant buyers and sellers before the actual event. It is intelligent enough to understand what you are looking for and will start to "hunt" for you. The process is automated and will be updating and introducing potential partners automatically, making it one of the most successful features of Mega Build.

About the Organiser

PT Reed Panorama Exhibitions (RPE), is a joint venture company between International organizer Reed Exhibitions with Indonesia trusted tourism company, transportation and hotel service, Panorama Group.

RPE has a vision to create and develop a good quality and professional business model and creating a beneficial business ecosystem through a partnership with agency, government, business partner, trading association, venue, contractor and consumer.

RPE currently held Eight major events in Indonesia from various sector of industries including; construction, franchising/ licensing, maritime, mining, transportation/ logistic, hair and beauty; and consumer platform which presenting Indonesia Comic Con and Maternity, Baby & Kids Expo.

For more information, visit www.megabuild.co.id.



8 - 10 November 2017
Jakarta Convention Centre
Jakarta, Indonesia



From 8 to 10 November 2017 at the Jakarta Convention Centre, Konstruksi Indonesia and The Big 5 Construct Indonesia join forces once again to create the perfect platform for infrastructure and construction industry professionals to network, learn and do business in Indonesia. Last year, more than 320 companies participated to the event, which welcomed over 12,000 professionals.

Konstruksi Indonesia and The Big 5 Construct Indonesia 2017 are co-located with the Indonesia Infrastructure Week 2017 and jointly organised by Tarsus Indonesia and dmg events Middle East, Asia & Africa.

Industry defining, and culturally vibrant, the opening ceremony at the Jakarta Convention Center has marked the official start to Konstruksi Indonesia and The Big 5 Construct Indonesia (KIBIG5), Indonesia's complete solution for the construction industry.

Concluding the speeches at this year's opening ceremony, The Minister of National Development Planning, Bambang Brodjonegoro, encouraged contractors in the region to move away from operator-based thinking, and to instead consider investment in Indonesia's booming infrastructure.



“Contractors in Indonesia have grown so much that they have the capacity to be more than just contractors, they can become investors as well” explains Rido Matari, Head of the Regional Infrastructure Development Agency at The Ministry of Public Works and Housing Indonesia (PUPR).

Having held a highly attended CPD (continued professional development) certified workshop during the opening morning of KIBIG5, Rido went on to outline that “as investors, contractors know better whether they can get profit from a project or not, following that, they will make gains from more than just the construction phase.”

Event Director for The Big 5 Construct Indonesia Muhammed Kazi reports that “innovative construction products and solutions from all sectors are filling the trade floor this year, and seeing evolution at various levels sheds light on the prosperity that government and traders alike anticipate for the industry in Indonesia.”

In addition to the Minister’s call-to-action at the opening ceremony, the construction industry in Indonesia was mapped out and its future encouraged by the Chairman of the Indonesian Chamber of Commerce and Industry (KADIN) Roslan Roeslani and Representative Danis Sumadilaga for Director General of the Construction Division at PUPR.

Other forward-thinking features at Konstruksi Indonesia and The Big 5 Construct Indonesia include a series of CPD workshops covering topics such as Sustainability and Technology talks, a unique Global Meetings Program matching key buyers and sellers, and a wealth of co-located events running alongside KIBIG5 under Indonesia Infrastructure Week (IIW).

The 15th annual edition of Konstruksi Indonesia (KI) and the 3rd annual edition of The Big 5 Construct Indonesia are jointly organised by Tarsus Indonesia and dmg events Middle East, Asia and Africa.

For more information, visit www.konstruksiindonesiabig5.com.



We have made it easier for you to read on your phone!



TRADECARDS
GLOBAL

App features include

- Digital issue browsing
- Industry news update
- Events update
- Organisation listings and more...

VISIT OUR WEBSITE AT
www.tradecardsglobal.com

Download **Tradecards Global** mobile application to browse and read our current and past issues of

**bathroom
+kitchen**
today

SEAB
SOUTHEAST ASIA BUILDING

**SOUTHEAST ASIA
CONSTRUCTION**

Lighting Audio Visual
today

**lighting
today**

**Security
Solutions**
Today





Subscription Form

Fax your order today
+65 6842 2581

(Please tick in the boxes)

Southeast Asia Building

SINCE 1974

1 year (6 issues)

Singapore	S\$45.00
Malaysia / Brunei	S\$90.00
Asia	S\$140.00
America, Europe	S\$170.00
Japan, Australia, New Zealand	S\$170.00
Middle East	S\$170.00

Bathroom + Kitchen Today

SINCE 2001

1 year (4 issues)

Singapore	S\$32.00
Malaysia / Brunei	S\$65.00
Asia	S\$80.00
America, Europe	S\$130.00
Japan, Australia, New Zealand	S\$130.00
Middle East	S\$130.00

Southeast Asia Construction

SINCE 1994

1 year (6 issues)

Singapore	S\$45.00
Malaysia / Brunei	S\$90.00
Asia	S\$140.00
America, Europe	S\$170.00
Japan, Australia, New Zealand	S\$170.00
Middle East	S\$170.00

Lighting Today

SINCE 2002

1 year (4 issues)

Singapore	S\$32.00
Malaysia / Brunei	S\$65.00
Asia	S\$80.00
America, Europe	S\$130.00
Japan, Australia, New Zealand	S\$130.00
Middle East	S\$130.00

Security Solutions Today

SINCE 1992

1 year (6 issues)

Singapore	S\$45.00
Malaysia / Brunei	S\$90.00
Asia	S\$140.00
America, Europe	S\$170.00
Japan, Australia, New Zealand	S\$170.00
Middle East	S\$170.00

Lighting Audio Visual Asia

SINCE 2013

1 year (4 issues)

Singapore	S\$32.00
Malaysia / Brunei	S\$65.00
Asia	S\$80.00
America, Europe	S\$130.00
Japan, Australia, New Zealand	S\$130.00
Middle East	S\$130.00

IMPORTANT Please commence my subscription in _____ (month/year)

Personal Particulars

NAME: _____

POSITION: _____

COMPANY: _____

ADDRESS: _____

TEL: _____ FAX: _____

E-MAIL: _____

Professionals (choose one):

Architect Landscape Architect Interior Designer Developer/Owner

Property Manager Manufacturer/Supplier Engineer Others

I am sending a cheque/bank draft payable to:
Trade Link Media Pte Ltd, 101 Lorong 23, Geylang, #06-04, Prosper House, Singapore 388399
 RCB Registration no: 199204277K * GST inclusive (GST Reg. No: M2-0108708-2)

Please charge my credit card (circle one): Amex / Diner's Club

Card Number: _____ Expiry Date: _____

Name of Card Holder: _____ Signature: _____

Calendar of Events

MARCH 2018

XIAMEN STONE FAIR 2018

March 6 – 9
Xiamen International Conference
and Exhibition Center
Xiamen, China
Email: info@stonefair.org.cn
Website: www.stonefair.org.cn

WORLDBEX 2018

March 14 – 18
World Trade Center Metro Manila,
SMX Convention Center
Manila, Philippines
Email: info.worldbex@gmail.com
Website: www.worldbex.com

MEGABUILD INDONESIA 2018

March 15 – 18
Jakarta Convention Center
Jakarta, Indonesia
Email: eric.antonius@reedpanorama.com
Website: www.megabuild.co.id

ECOBUILD SOUTHEAST ASIA 2018

March 27 – 29
Kuala Lumpur Convention Centre
Kuala Lumpur, Malaysia
Email: ecobuild-sea@ubm.com
Website: www.ecobuildsea.com

MAY 2018

ARCHITECT EXPO THAILAND 2018

May 2 – 7
IMPACT Exhibition Center
Bangkok, Thailand
Email: info@TTFintl.com
Website: www.architectexpo.com

BUILD4ASIA 2018

May 9 – 11
Hong Kong Convention and Exhibition Center
Hong Kong
Email: exhibit@build4asia.com
Website: www.build4asia.com

ADVERTISERS' INDEX

ARCHITECT EXPO THAILAND 2018	IFC	KON	17
BRAVAT	13	MEGABUILD INDONESIA 2018	50
BUILD4ASIA 2018	19	NINGBO BOSHENG	15
COSENTINO	21	REGINOX	IBC
DURAVIT	23	ROCA	9, 11, OBC
ECOBUILD 2018	88	SEASONSTONE SINGAPORE	3
ECONFLO	7	XIAMEN STONE FAIR 2018	66
HANSGROHE	1	WORLDBEX 2018	86
KEUCO	5		



PRODUCTION



DESIGN



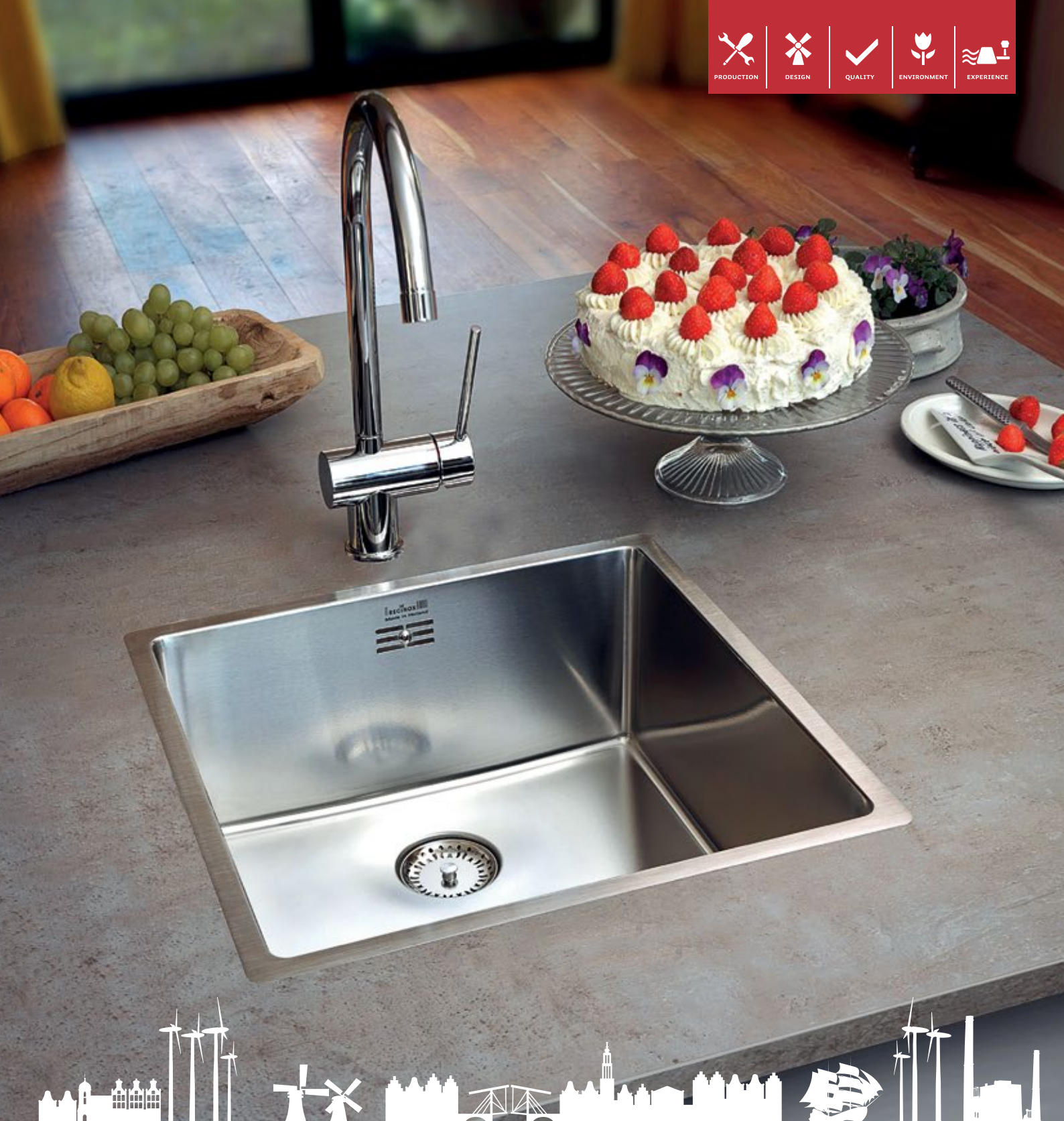
QUALITY



ENVIRONMENT



EXPERIENCE



MADE IN HOLLAND

Luxurious design of unparalleled comfort and efficiencies to enhance your lifestyle. Whatever your style or taste, Reginox always has the perfect solution for you.

Retailers:

- Bravat Singapore Pte Ltd**, 1 Commonwealth Lane, #01-10/17 One Commonwealth, Singapore 149544. (65) 6659 1868
- Bretz & Co Pte Ltd**, 1 Nassim Road, #01-02, Singapore 258458. (65) 6336 9926
- Ecnflo Systems Pte Ltd**, 401 Commonwealth Drive, #01-01, Lobby B, Haw Par Technocentre, Singapore 149598. (65) 6396 3738
- Home Niche Singapore Pte Ltd**, No.1 Kaki Bukit Road One, #01-06, Enterprise One, Singapore 415934. (65) 6273 8005
- Hemsley Holding Pte Ltd**, 39a Jalan Pemimpin, #07-01, Halcyon Building, Singapore 577183. (65) 6337 3136
- Ideal Bathroom Pte Ltd**, 545 Balestier Road, Singapore 329866. (65) 6255 5111
- Tiong Yeong Hardware Pte. Ltd.**, 1 Syed Alwi Road #01-01, Song Lin Building, Singapore 207628. (65) 6292 6633
- Wan Tai & Co (Pte) Ltd**, 25 Changi South Ave 2, Singapore 486594. (65) 6456 5900
- W.Atelier Pte Ltd**, Level One, 75 Bukit Timah Road, Singapore 229833. (65) 6270 8828

Reginox Far East Pte Ltd

2 Loyang Lane, #03-03, Singapore 508913. Tel: (65) 6788 5363 Fax: (65) 6788 3835

Email: info@reginox.com.sg Website: www.reginox.com @reginoxfe





ARMANI / **Roca**

A new bathroom concept

ROCA MALAYSIA SDN. BHD. (5554-M)

Level 3A, West Wing, Quattro West, No. 4, Lorong Persiaran Barat, 46200 Petaling Jaya, Selangor Darul Ehsan, Malaysia

Tel: +03 7952 2522 · Fax: +03 7952 2696 · www.my.roca.com · enquiries@my.roca.net

ROCA BATHROOM PRODUCTS SINGAPORE PTE. LTD. (199503842Z)

8 Burn Road #12-07 Trivex, Singapore 369977

Tel: +65 6333 4080 · Fax: +65 6636 7476 · www.sg.roca.com · enquiries.sg@sg.roca.com