

ARCHITECTURE · INTERIOR DESIGN · LANDSCAPING

November / December 2018

SEAB

SOUTHEAST ASIA BUILDING

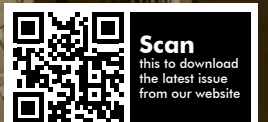
Msheireb Mosque

Doha, Qatar

ARCHITECTURE + INTERIOR • Religious Buildings

SPECIAL FEATURE • Roofing System

ARCHITECT'S CORNER • Interviews with Beth Campbell, new CEO of Wilson Associates and Mary Chan, Head of Sustainable Building Design and Assistant Director at DLN Architects Limited



Scan
this to download
the latest issue
from our website

SHANGHAI INTERNATIONAL CITY AND ARCHITECTURE EXPO 2018

Innovation Drive Urban Development



Urban Construction, Management and Development



Urban Traffic Construction and Parking Facilities



Urban Planning and Architectural Design



Prefabricated Building and Urban Infrastructure

Hosted by

United Nations Human Settlements Programme—UN-HABITAT
Shanghai Municipal Commission of Housing and Urban-Rural Construction
Urban Planning Society of China
Architectural Society of China

Co-hosted by

Shanghai Coordination Center for World Cities Day

Organized by

Shanghai Green Building Council

Operated by

VNU Exhibitions Asia Ltd.

Mr. Rainhard Yao

Tel: +86 21 6195 3555

E-mail: rainhard.yao@vnuexhibitions.com.cn

No.1333, Nanjing Rd (W) Shanghai, PRC (200040)



**Custom Perforated Screen Façade
In Champagne Gold Finish,
Illuminates Hilton Danang's Appearance**

www.hunterdouglas.asia

HunterDouglas 
Architectural

nov-dec 2018 CONTENTS

Features

ARCHITECTURE + INTERIOR – Religious Buildings

- 42 Madonna della Bruna and Saint Eustachio Church – A case study by Mapei
- 46 Msheireb Mosque
- 50 Waterside Buddhist Shrine
- 54 Catholic Suzuka Church
- 58 Seashore Chapel
- 62 Wat Ananda Metyarama Thai Buddhist Temple

SPECIAL FEATURE – Roofing System

- 66 New Feyenoord Academy and Sports Club Feyenoord
- 68 New Huabang International Centre
- 70 Club Stand at Victoria Racing Club

ARCHITECT'S CORNER – Interview

- 74 Mary Chan, Head of Sustainable Building Design and Assistant Director at DLN Architects Limited, Hong Kong, was given the Women in Green Building Leadership Award, a new category at the World Green Building Council's (WorldGBC) Asia Pacific Leadership in Green Building Awards 2018. Ms Mary Chan is the first winner of this award and in this interview she tells us more about herself and her work
- 80 Beth Campbell, the new CEO of Wilson Associates, talks about her new role and show she plans to make the firm more innovative and competitive

Regulars

News

- 6 News from Asia Pacific, Middle East & World

Events Calendar

- 37 Guide to international trade shows, expos & fairs



On the Cover: Msheireb Mosque, Doha, Qatar, by John McAslan + Partners. Photo: © Hufton + Crow

Cover design by Fawzeeah Yamin

PUBLISHER

Steven Ooi (steven.ooi@tradelinkmedia.com.sg)

ASSOCIATE PUBLISHER

Eric Ooi (eric.ooi@tradelinkmedia.com.sg)

EDITOR

Amita Natverlal (seab@tradelinkmedia.com.sg)

MARKETING MANAGER

Felix Ooi (felix.ooi@tradelinkmedia.com.sg)

MARKETING EXECUTIVE

Lena Qu Huijie (huijie@tradelinkmedia.com.sg)

HEAD OF GRAPHIC DEPT/ADVERTISEMENT CO-ORDINATOR

Fawzeeah Yamin (fawzeeah@tradelinkmedia.com.sg)

GRAPHIC DESIGNER

Siti Nur Aishah (siti@tradelinkmedia.com.sg)

CIRCULATION

Yvonne Ooi (yvonne.ooi@tradelinkmedia.com.sg)

Disclaimer

All advertisers and contributors must ensure all promotional material and editorial information submitted for all our publications, must be free from any infringement on patent rights and copyrights laws in every jurisdiction. Failure of which, they must be fully liable and accountable for all legal consequences (if any) that may arise.

The Editor reserves the right to omit, amend or alter any press release submitted for publication. The publisher and the editor are unable to accept any liability for errors or omissions that may occur, although every effort has been taken to ensure that all information is correct at the time of going to press. No portion of this publication may be reproduced in whole or part without the written permission of the publisher.

The editorial contents contributed by consultant editor, editor, interviewee and other contributors for this publication, do not, in any way, represent the views of or endorsed by the Publisher or the Management of Trade Link Media Pte Ltd. Thus, the Publisher or Management of Trade Link Media will not be accountable for any legal implications to any party or organisation.

Southeast Asia Building is available free-of-charge to applicants in the building industry who meet the publication's terms of control. For applicants who do not qualify for free subscription, copies will be made available, subject to acceptance by the publisher, for a subscription fee, which varies according to the country of residence in the following manner:

Annual Subscription

Airmail: America/Europe – S\$170, Japan, Australia, New Zealand – S\$170, Asia – S\$140, Brunei – S\$90, Malaysia – S\$90

Surface mail: Singapore – S\$45

(Incl 7% GST Reg No: M2-0108708-2)

Printed in Singapore by KHL Printing Co Pte Ltd

MCI (P) 098/07/2017 KDN No: 1560 (1270) – (6)

ISSN 2345-7066 (Print) and ISSN 2345-7074 (E-periodical)

Trade Link Media Pte Ltd also publishes:

- Bathroom + Kitchen Today
- Lighting Today
- Security Solutions Today
- Southeast Asia Construction

SOUTHEAST ASIA BUILDING is published bi-monthly by:

Trade Link Media Pte Ltd, 101 Lorong 23, Geylang,

#06-04, Prosper House, Singapore 388399

Tel: +65 6842-2580 Fax: +65 6842 2581

Editorial e-mail: seab@tradelinkmedia.com.sg

Website: www.tradelinkmedia.com.sg

Co. Reg. no: 199204277K



New looks for beloved floors



Make your old wood floor look amazing with Bona Inspiration, a new floor styling concept inspired by the latest trends. Choose from a wide variety of looks, ranging from silk matte to brushed black – all beautifully realized by your Bona Certified Craftsman.

See all styles and looks at bona.com/floorstyling, and follow us on Facebook and Instagram for the latest floor trends.

Bona Far East & Pacific Pte Ltd

15 Jalan Kilang Barat, Frontech Centre #01-05 Singapore 159357
Tel : +65 6377 1158 | Email : info.apac@bona.com | www.bona.com

Bona[®]
Passion for wood floors



Dear readers, welcome to another issue of the region's leading architecture and interior design magazine, *Southeast Asia Building*. The Nov/Dec issue explores the theme of designing for religious buildings such as church, temple or a mosque. Every project calls for a detailed understanding of the needs of the worshippers and the context of the location.

In the special feature section, you will get to read about some projects with unique roof designs, which are not only aesthetically pleasing but environmentally friendly. Lastly in the interview sections, we have two great personalities – Beth Campbell, the new CEO of Wilson Associates and Mary Chan, Head of Sustainable Building Design and Assistant Director at DLN Architects Limited, who tell us more about themselves and their works.

We hope you enjoy this issue and we encourage you to send us any feedback.

Amrita Natverlal

Media Partners of SEAB



Association of Myanmar Architects

BGBC
Bangladesh Green Building Council

design
COUNCIL
SRI LANKA
Design Council – Sri Lanka



Emirates Green Building Council

Foundation for Futuristic Cities

Green Building Committee
BEI MYANMAR



Green Building Council Indonesia

Green Building Council Italia

Green Building Council Mauritius



Green Building Council Namibia

Green Building Council Sri Lanka

Hong Kong Green Building Council



Interior Design Confederation of Singapore

Jordan Green Building Council

Qatar Green Building Council



Philippine Green Building Council

Singapore Green Building Council

Society of Interior Designers (Singapore)



The Hong Kong Institute of Architects



Vietnam Green Building Council

We're on Social Media

Scan to visit our website
<http://seab.tradelink.media.biz>

Like us at
www.facebook.com/southeastasiabuilding

Follow us
[@SEA_Building](https://twitter.com/SEA_Building)

TECHNAL PRESENTS

LUMEAL XXL
LARGE DIMENSION SLIDER

IMAGINE
WHAT'S NEXT



LUMEAL XXL

Design and innovation

Lumeal XXL is the new slider by Technal. This innovative solution allows you to create a wide glass surface area.

The bearing system can accommodate up to 600 kg per leaf whilst offering a smooth operability. Its central reinforced profile ensures outstanding wind resistance, allowing the realization of remarkable heights.


For more information about our solutions, please visit our website:

www.technal.asia



Sliding systems - Windows - Doors - Façades
www.technal.asia

✉ contact@technal.asia ☎ +[65] 6240 0170 📍 10 Changi South Lane #06-01 Singapore

By  Hydro

Alila Diwa Goa takes eco-friendly measures to reduce carbon footprint

Goa, India – Alila Diwa Goa as the first Alila in India, takes pride in supporting sustainable tourism and reducing carbon footprint by the use of biodegradable material. The resort takes great care in minimising its environmental impact by using primarily local materials and working with the landscape to preserve indigenous ecosystems.

Measures such as the use of Areca leaf plates and bowls for outdoor catering events helps reduce plastic waste. These plates and bowls are made using naturally fallen palm leaves.

This is an eco-friendly option over using other cutlery as there is no water wastage for washing cutlery and is 100 percent biodegradable and compostable.

Alila Diwa Goa continues to strive to uphold its commitment towards sustainability. Since February 2018 Alila Diwa Goa has discontinued serving straws with beverages in support of the #NoPlasticStraws campaign. In the case where guest is requesting for straw, the resort will give straws that are made by using biodegradable plastic that decompose naturally in



Photo: © Alila Diwa Goa

a matter of just 18 months compared to 400 years for normal plastics.

Through an ongoing commitment towards sustainable development, Alila Diwa Goa has accomplished many initiatives to reduce the carbon footprint and voiced its firm commitment to respecting and protecting the environment. This year the resort is in the process of adopting EarthCheck operating standards, integrating the natural, physical and cultural elements of the environments.

Surbana Jurong teams up with HELP University to set up new green design centre

Kuala Lumpur, Malaysia – HELP University has signed a Memorandum of Understanding (MOU) with Surbana Jurong to set up a Green Design and Technology Centre, as well as to promote sustainability in the built environment.

The centre, which will be based in HELP University's Subang 2 campus, will offer certificate courses on renewable energies, sustainable urban planning, architecture, engineering and infrastructure. It will also focus on research and development in these fields, and there are plans to offer these courses at undergraduate and postgraduate level, as well as in its international schools, at a later stage.

HELP University is embarking on a mission to transform the institution and its programmes to train future generations to be ready for Industry 4.0 in which artificial intelligence,

increasing automation, and data analytics will play a key role in managing economies, and the lives of human beings.

The Green Design and Technology Centre is part of HELP University's plans to meet the growing demand for courses on sustainability in urban developments, and supports the country's vision of becoming a regional hub for education. As part of the MOU, both HELP and Surbana Jurong will develop and organise courses on sustainable building design for commercial developers and consultants in Malaysia and the region.

The partnership leverages HELP's experience and reputation in developing quality programmes, and Surbana Jurong's strong track record in providing sustainable planning, design and engineering solutions to the global urban and infrastructure market.

HVAC:

REACH A NEW LEVEL OF PERFORMANCE AND CONTROL

GRUNDFOS
iSOLUTIONS | A SMART SOLUTION
FOR YOU



CONNECT TO INTELLIGENT SOLUTIONS

HVAC systems in buildings can face many challenges, from poorly commissioned systems to high energy and power consumption, meaning increased energy costs. With Grundfos iSOLUTIONS you can utilise intelligent pumps, components and services, such as remote control, real-time monitoring and performance analysis. Together they enable you to optimise your systems and reach a new level of performance and control.

Discover more at Grundfos.ph



be
think
innovate

GRUNDFOS 

Grand Mercure debuts in Myanmar

Yangon, Myanmar – Grand Mercure has announced the opening of its first property in Myanmar. One of Southeast Asia's largest and most diverse countries, Myanmar remains one of the most mysterious and undiscovered destinations in the world. A land of breathtaking beauty and charm yet, only recently emerging into the modern world.

Myanmar has seen its emergence as a popular travel destination. According to the United Nations World Tourism Organisation, the country welcomed just 21,000 international arrivals in 1990, that rose to 120,000 in 1995, 660,000 in 2005 and 790,000 in 2010. Last year, Myanmar welcomed 3.44 million visitors up from 2.9 million in 2016 which saw an 18 percent increase.

Overlooking the famed Schwedagon Pagoda, Grand Mercure Yangon Golden Empire boasts 175 guest rooms and suites designed by local artist Pyar Dade. Featuring detailed hand-painted ceilings inspired by colourful sapphire, emerald, gold and ruby gemstones, the rooms ranged from 30 square metres for superior rooms to 340 square metres two-bedroom suite.

"This is our first Grand Mercure in Myanmar and the opening of Grand Mercure Yangon Golden Empire encapsulates the



Photo: © Grand Mercure Yangon Golden Empire. Photo shot by Michael Spencer

cultural touchstone of the destination and heritage in bringing local stories to life," said Patrick Basset, Chief Operating officer of AccorHotels, Upper Southeast and Northeast Asia and the Maldives.

IWG's Spaces expands with five new co-working sites in Singapore

Singapore – IWG, one of the world's leading providers of flexible workspaces, announced its Spaces brand expansion plans to open five new locations in Singapore by mid-2019 offering a total of 250,000 square feet (roughly the size of six



Spaces City Hall in Singapore is the first Spaces location in Asia Pacific outside its European roots. Photo: © IWG

football fields) of co-working space for all sizes of businesses and individuals. The new Spaces locations in Robinson Road, One Raffles Place, TripleOne Somerset, Paya Lebar Quarter and Clarke Quay will add to its existing regional network of 23 locations across Asia Pacific.

Spaces, the Amsterdam-born creative workspace provider, selected Singapore as the first market to kickstart its global expansion in Asia Pacific outside of its European roots, with the opening of Spaces at City Hall (a 26,000-square feet area located at 410 North Bridge Road) in September 2016. In just 20 months, Spaces has established firm presence across the region with 23 locations in China, Japan, India, South Korea, Hong Kong, Taiwan, Thailand, Philippines, Australia and New Zealand.

Spaces is expanding to all Central Business district (CBD) locations worldwide driven by high demand from their customers. According to an IWG Global Business Survey, it was found that 86 percent of Singaporeans now work from outside their offices and 78 percent said that flexible workspaces help drastically reduce set-up costs and the need for capital investment.



THROUGH PLAY,
WE BUILD HOPE
FOR OUR CHILDREN



VISIT US AT

THE BIG 5 DUBAI 2018

DATE | 26-29 November 2018

VENUE | Dubai World Trade Centre

BOOTH
NO.

Park Games Technology
AR331
(MATRADE Pavilion)



SAFETY



TRUST



DESIGN



QUALITY

All PARK GAMES products are designed and manufactured in accordance to the International Safety standards; EN 1176: TUV of Germany, ASTM of USA, MS 966 of Malaysia and the Quality Management System of ISO9001:2008



- Children Playground Equipment
- Indoor Children Play Centres
- Interactive Electronic Outdoor Play
- Rope And Climbing Structures
- Waterplay
- Skate Park
- Outdoor Fitness And Gym
- Safety Flooring
- Park Furniture



+6(03) 7491 0278

PARKGAMES.COM.MY

LWK leads another win for TOD in Nanjing

Hong Kong – LWK & Partners (HK) Ltd. is pleased to announce that it has successfully won the bid for a transit-oriented development (TOD) project in the Jiangbei New District, Nanjing, China commissioned by the Nanjing Jiangbei New District Economic Hub Development Office. This national project is situated near Taishan Xincun Station and Baotashan Country Park. The area has long been a research and development (R&D) and education base with convenient transportation in the city.

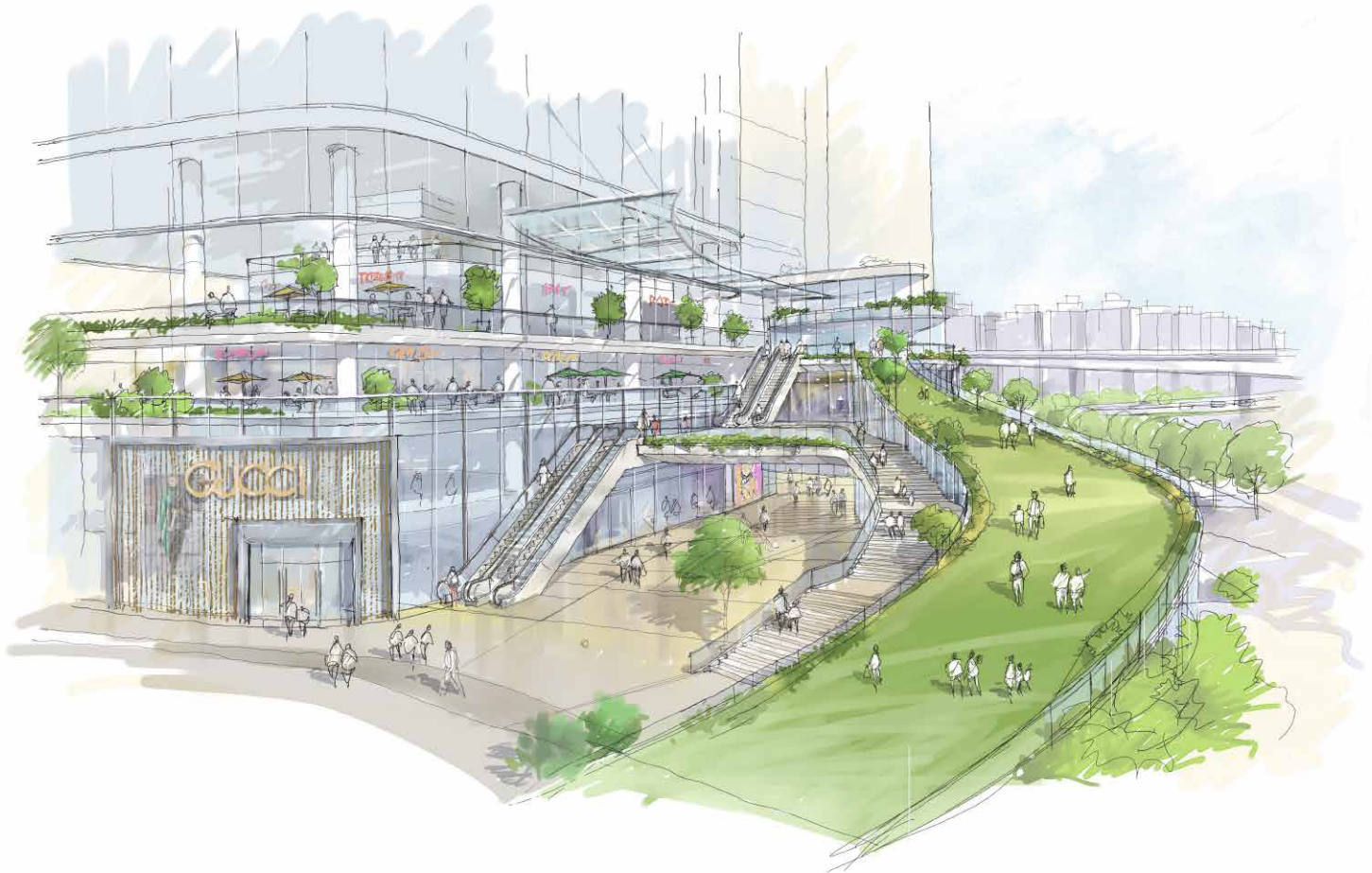
LWK is responsible for the Masterplanning and Architectural Design of the project. The proposal was drawn based on urban planning concepts with an architectural perspective, which perfectly combines two of the Company's core strengths. The project has a gross floor area of approximately 400,000 square metres. It is expected to include office towers, residential buildings, shopping malls, a commercial street, a public transit hub and a district services centre.

Going through with the 'integrated TOD' concept, the multiple sites intended for various functions split by the motor highway are reunited through underground space. Baotashan

Park will be restored – this will preserve the existing spaces and masses (such as the natural landscape of trees and waters, Baotashan, Baotashan Country Park and attached cultural heritage) as well as maximise its potential in the overall enhancement of community facilities so that it can develop into a community centre and public services centre.

From an architectural point of view, the fluid design of the commercial building is a continuation of Nanjing's natural landscape – it is rich in both mountains and waters. Also stemming from this dynamic and organic cityscape, earth-covered constructions are pictured to blend seamlessly into the existing hills. Multiple sunken plazas are laid across the site to act as new meet-up points for city events. As a truly integrated development, the residential tower will feature a series of rooftop gardens, which will not only elevate the living experience, but also embellish the Nanjing skyline.

Last but not least, the half-sunken public transit station will be a unique architecture that houses the high-efficiency transit system.



Sketch drawing of Nanjing TOD. Image: © LWK & Partners (HK) Ltd.

SOUNDPROOFING SOLUTIONS AGAINST THE NOISE OF FOOTSTEPS



Excellent sound dampening systems for ceramic, stone and wooden floors.

Certified systems for rapid and easy installation. **Mapesilent**[®] sheet and panel soundproofing system for floating screeds. Resistant to impact and footfall on site. **Mapesonic CR**[®] under-floor soundproofing system for efficient reduction of noise from footsteps. Suitable for laying over existing flooring and under new flooring.

EVERYTHING'S **OK** WITH **MAPEI**

Learn more on www.mapei.com.sg

 **MAPEI**[®]
ADHESIVES • SEALANTS • CHEMICAL PRODUCTS FOR BUILDING



CapitaLand-CDL joint venture wins prime site in Sengkang Central



Photo: © CapitaLand / CDL

Singapore – CapitaLand Limited and joint venture partner City Developments Limited (CDL) have successfully clinched the attractive mixed-use residential and commercial site in Singapore's vibrant Sengkang Central at a tender price of S\$777.78 million. The bid was submitted on a Two-envelope Concept and Price Revenue tender system which works out to S\$923.60 per square foot of gross floor area¹.

Leveraging synergies from CapitaLand's and CDL's proven expertise in integrated developments, the joint venture will transform the 3.7-hectare site – the largest commercial and residential site awarded since 2015 – into an integrated community hub with 700 residential apartments, meeting the needs of residents in Buangkok with amenities such as a hawker centre, community club, childcare centre, retail shops, as well as public rail and bus transport facilities sited in a one-stop location. The new non-remittable and revised ABSD rates imposed on housing developers from 6 July 2018 will not

apply for this site acquisition. The integrated development is targeted for completion in the first half of 2022.

This integrated site in the heart of Sengkang Central has direct access to Buangkok MRT Station and the future bus interchange and is a mere 20-minute drive from the Central Business District. At only nine stops to Dhoby Ghaut MRT Station via North-East Line, the travelling time is less than 25 minutes. The site is also easily accessible via major expressways such as KPE, SLE and CTE and well connected to major hubs such as the future Punggol Digital District and Seletar Aerospace Park.

The proposed development will offer first-time private home buyers and upgraders an attractive opportunity to own a home with excellent transportation connectivity and close proximity to a myriad of amenities.

¹ Total gross floor area is 78,236 square metres.

Space Matrix makes strategic acquisition in China

Singapore – Space Matrix, the Singapore-based workplace design and build consultancy, has expanded into China through the successful acquisition of interior design and construction company, Muraya. This strategic acquisition is part of Space Matrix's vision to expand its footprint across Asia.

With its entry into China, the firm affirmed a stronger foothold in North Asia reinforcing its Pan-Asian footprint amidst the eight countries Space Matrix has offices in. With this acquisition, the firm has significantly enhanced its ability to service and manage projects from Australia, to across India, Southeast Asia and now China.

With this acquisition, Muraya will be rebranded to form Space Matrix China. Globally, Space Matrix will now have a total headcount of over 400 employees across 14 offices. Revenues are on track to grow over 40 per cent and will hit S\$165 million this year.

Last year alone, the firm designed over 6.9 million square feet of commercial real estate on behalf of its global clients. In Singapore, the firm has been working with leading global and local firms, with the objective of creating unique and immersive workspaces that inspire people and impact businesses. Some



Left to right: Love Englund, founder and APAC Director of Muraya, Felix Jiang, co-founder and Director of Muraya in Shanghai and Arsh Chaudhry, CEO, Space Matrix. Photo: © Space Matrix

of the more prominent projects in Singapore designed by Space Matrix recently are IBM, Li & Fung, Prudential Insurance, ServiceNow, Symantec, Thebridge by Ascendas-Singbridge and Uber.

RISER PIPING SOLUTIONS

Three ways to accommodate thermal movement in riser piping with Victaulic® couplings:

Free floating with movement accommodated at the top of the riser



Use Victaulic® flexible couplings in accommodating linear movement within each coupling



Use of all Victaulic rigid couplings in accommodating movement with an in-line Victaulic expansion compensator



victaulic.com

9583 REV A 04/2018
© 2018 VICTAULIC COMPANY. ALL RIGHTS RESERVED.



Playpoint designs five-storey tall netted playground for Changi Airport Terminal 4

Singapore – Changi Airport Terminal 4 in Singapore has a new attraction at its transit area and it is a five-storey towering net playground, called the Chandelier Net.

Conceptualised as a Chandelier by Snohetta, it combines a sculpture and playground into one, making it as a functional art. Anchored to the ceiling and ground, it features sliding poles, double helix shaped climbing net weaved to the tapestry steel core with LED light ring at the top.

Playpoint in collaboration with KOMPAN design studio were able to bring the concept to reality. RSP architects, PI Architects and KOMPAN Corocord together with Playpoint worked tirelessly to fast track the project to meet the official opening of Terminal 4 on 31 August 2017.

The Chandelier stands at 16.1 metres in height and uses 10 kilometres of rope and is supported by 15 tonnes of steel. It is designed for children between the age group of 6–12 years old. The structure can admit up to 50 children and adults in it.

Playpoint is currently installing a slide in the Chandelier. It will be opened for play only at the end of 2018.



Photo: © Playpoint (Singapore) Pte Ltd

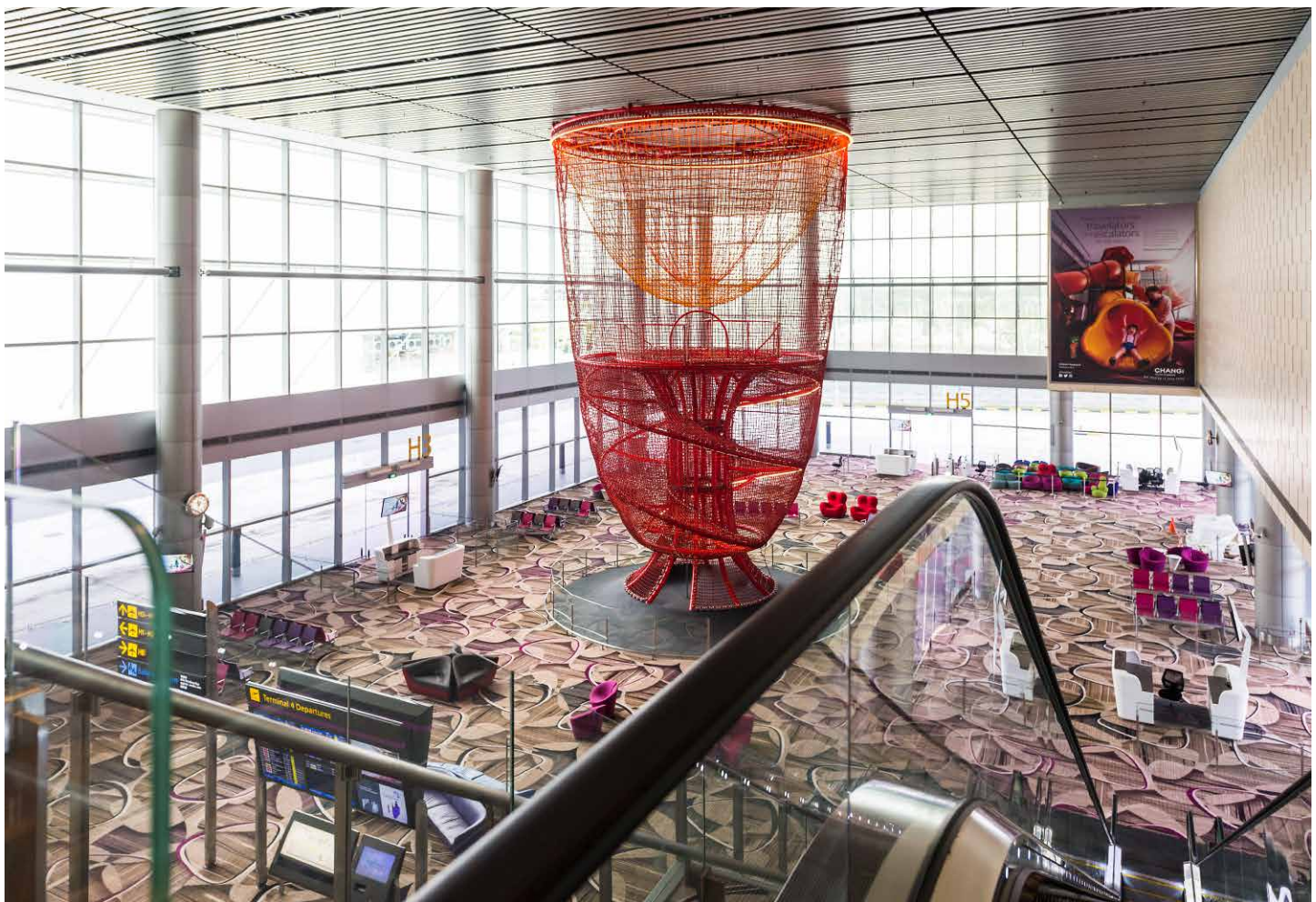


Photo: © Playpoint (Singapore) Pte Ltd

SMU breaks ground for new five-storey green building

Singapore – Singapore Management University (SMU) recently broke ground on latest development – a five-storey green building in the heart of the city designed to support the University's innovative SMU-X pedagogy, as well as cultivate innovation and entrepreneurship.

The S\$70 million development has been made possible by a donation from the Tahir Foundation and a grant from the Building and Construction Authority under the Public Sector Construction Productivity Fund (PSCPF).

SMU has named the building Tahir Foundation Connexion in appreciation of the Foundation's contribution. The donation, the amount of which is undisclosed, is the second largest gift received by the University to-date. The ceremony was officiated this morning by Guest-of-Honour Mr Desmond Lee, Minister for Social and Family Development and Second Minister for National Development, in the presence of 150 guests, comprising SMU's Board of Trustees, partners, as well as faculty, staff and student leaders.

Located between SMU's School of Accountancy and School of Law, the new building will add over 8,600 square metres of teaching-and-learning space to SMU's city campus. It will enable seamless connectivity through the entire SMU city campus, as well as provide a sheltered link (aboveground and underground) from Bras Basah Road leading to Fort Canning and Armenian Street. Besides enhancing convenience for the SMU community, it will also benefit members of the public, who will have better access to the lush greenery at Fort Canning Park. With some of the new building's spaces and facilities being open 24/7, it will also add vibrancy to the Bras Basah precinct.

In line with SMU's commitment towards developing a smart, green and sustainable campus, the Tahir Foundation Connexion is designed to meet the Building and Construction Authority (BCA) Green Mark Platinum certification and the international WELL Building Standard. Aside from being the city centre's first large-scale Mass Engineered Timber (MET) development, the building is also its first On-site Net Zero Energy Building, being self sustainable with its own power generated from a photovoltaic system located within the same building. The building also boasts many green features and technologies, including an advanced passive displacement cooling, smart LED lighting and predictive smart building control systems.



Artist's impression: © SMU

Tanya Cox of the Green Building Council of Australia elected Vice-Chair of World Green Building Council's Board of Directors



Tanya Cox

Sydney, Australia – Tanya Cox of the Green Building Council of Australia has been elected Vice-Chair of the World Green Building Council's Board of Directors. A highly influential group, the Board is made up of global leaders on green building in the building and construction industry.

Tanya was elected Vice-Chair for her leadership in the green building movement and dedication to improving the sustainability of buildings, both in Australia and at the global level.

Terri Wills, CEO of the World Green Building Council, said: "Tanya has demonstrated outstanding leadership in the field of sustainability, and has championed green building as one of the most effective solutions to climate change."

Tanya was first appointed to the WorldGBC's Board on 1 July 2016 and has served as Treasurer since 1 July 2017. This is the first time an Australian has been appointed to the position of Vice-Chair.

"I am honoured to have been elected to this important position and to have this opportunity to help lead the WorldGBC's transformational work. Australia is a recognised world leader on sustainability in the built environment and the WorldGBC offers a platform to share lessons learned and collectively build our capacity to respond to a broadening scope of sustainability challenges," said Tanya Cox.

National Parks Board and PUB receive global tech awards for excellence in use of location analytics

Singapore – Singapore's National Parks Board (NParks) and PUB, Singapore's National Water Agency, received the Special Achievement in GIS (geographic information system) (SAG) award, in recognition of their innovation and excellence in applying location analytics for improving Singapore's key public services. Selected from among more than 100,000 organisations worldwide, NParks and PUB were presented with the award by Jack Dangermond, Founder and CEO of global mapping giant Esri, at the world's largest geospatial event – the Esri International User Conference in San Diego, California, United States.

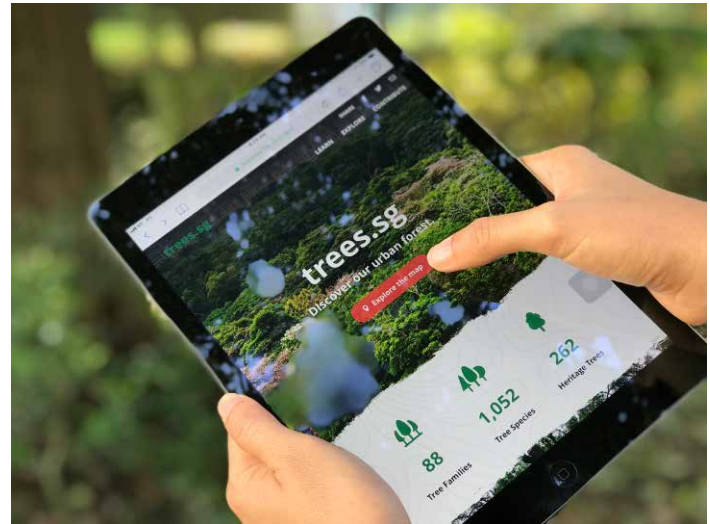
A proponent of geospatial analytics, NParks has utilised the technology since 1999 and in 2016, introduced a programme to promote its adoption across the organisation. This gave rise to MAVEN, a platform that consolidates all geospatial databases.

MAVEN is a single repository that stores information such as park planning and facilities data, tree information, biodiversity data, vegetation maps and satellite maps. With MAVEN being accessible on mobile devices, updated information on trees, parks and gardens are easily available on-the-go as officers carry out their operations on-ground.

The agency's application of smart maps goes beyond internal operations to involve Singapore residents as well. For example, members of the public can submit biodiversity sightings via the SGBioAtlas mobile application. These reports are consolidated with input from government agencies, educational institutions and non-governmental organisations (NGOs) on BIOME, which stores biodiversity and environment related data, and maps the distribution of flora and fauna in Singapore.

Another platform, trees.sg, enables local residents to learn about and appreciate more than 500,000 of Singapore's trees. This interactive map also allows users to share their photos and stories about the trees, as well as view contributions by others.

Over at PUB, Singapore's national water agency ensures



New online platform about trees. Photo credit: NParks

a diversified and sustainable supply of water for Singapore through four sources of water – local catchment water, imported water, NEWater and desalinated water.

To support water operations, infrastructure planning and business processes, the agency worked with ESRI to develop a customised solution for Singapore's integrated water management requirements.

This led to the development of the Geographic Resource Information System (GERI), designed to provide an overview of PUB's used water, drainage and water infrastructure with a comprehensive digital representation of the islandwide network such as pipes, meters, valves and other critical facilities.

The implementation of the GERI system has reaped several key benefits for PUB. GERI provides PUB officers with both geospatial asset and operational information to make informed decisions and take relevant actions.

Pullman to open first hotel in Singapore

Singapore – AccorHotels and EL Development Pte Ltd, a Singapore-based property developer, have announced they will open a new-build five-star Pullman on a prime site on Hill St, in the civic and cultural heart of the city. The 342-room hotel will be Singapore's first Pullman and will feature a rooftop bar and executive lounge with sweeping views over Fort Canning, the Singapore River and St Andrew's Cathedral, along with a vibrant

lobby, health and fitness centre and pool. The hotel is set to open in 2022 after a complete redevelopment of the site.

Mr Lim Yew Soon, Managing Director of EL Development Pte Ltd said, "We are pleased to appoint AccorHotels to manage our first hotel and we will bring the same high quality that symbolises our residential and mixed-use buildings to what will be our first hotel development. We are confident that the Pullman brand is

the perfect fit for the market in Singapore as the brand has really built a strong reputation, especially in Asia."

The Pullman brand is one of the fastest-growing upper upscale brands in the world and since launching in Bangkok in 2007, it has become the hotel of choice for a new generation of hyper-connected travellers seeking contemporary design, culture and connectivity in a cosmopolitan atmosphere.

Keppel Bay Tower aims to become Singapore's first super low-energy high-rise existing commercial building

Singapore – Keppel Land has been awarded a grant of up to \$1.28 million by the Building and Construction Authority of Singapore (BCA) to implement new and emerging technologies at the Green Mark Platinum-certified Keppel Bay Tower. The technologies will reduce its annual energy consumption by 20 percent and will make the development Singapore's first super low-energy high-rise existing commercial building.

Keppel Land Limited (Keppel Land), in collaboration with the BCA, will be incorporating five new and emerging energy efficient technologies in Keppel Bay Tower, where the headquarters of Keppel Corporation is based.

The five technologies that will be piloted at Keppel Bay Tower include a high efficiency air distribution system, a revolutionary cooling tower water management system, integrated sensor technology to optimise fresh air intake, smart lighting solutions as well as an intelligent building control system. This will be the first time that any of these technologies, selected from the BCA-Keppel Land Joint Challenge Call launched last year, are implemented in a development in Singapore. In addition, Keppel Land will also explore opportunities to collaborate with Envision, a global leading smart energy management company, to further improve the energy efficiency of Keppel Bay Tower.

Keppel Land has been awarded a grant of up to \$1.28 million from the BCA for this pilot programme. With the completion of the pilot, estimated to be by July 2020, the Company expects to decrease the annual energy consumption of Keppel Bay Tower from about 145 kilowatt hour (kWh)/m² per year to 115 kWh/m² per year¹. This is a 20 percent improvement from its current annual energy consumption. Keppel Land is working with the BCA to certify Keppel Bay Tower under the new Green Mark for Super Low Energy and make the development Singapore's first super low-energy high-rise existing commercial building.

Keppel Land will implement the technologies in certain parts of the 18-storey building, which will allow Keppel Bay Tower to yield estimated overall annual energy savings of approximately 1.5 million kWh. This is equivalent to the amount of energy

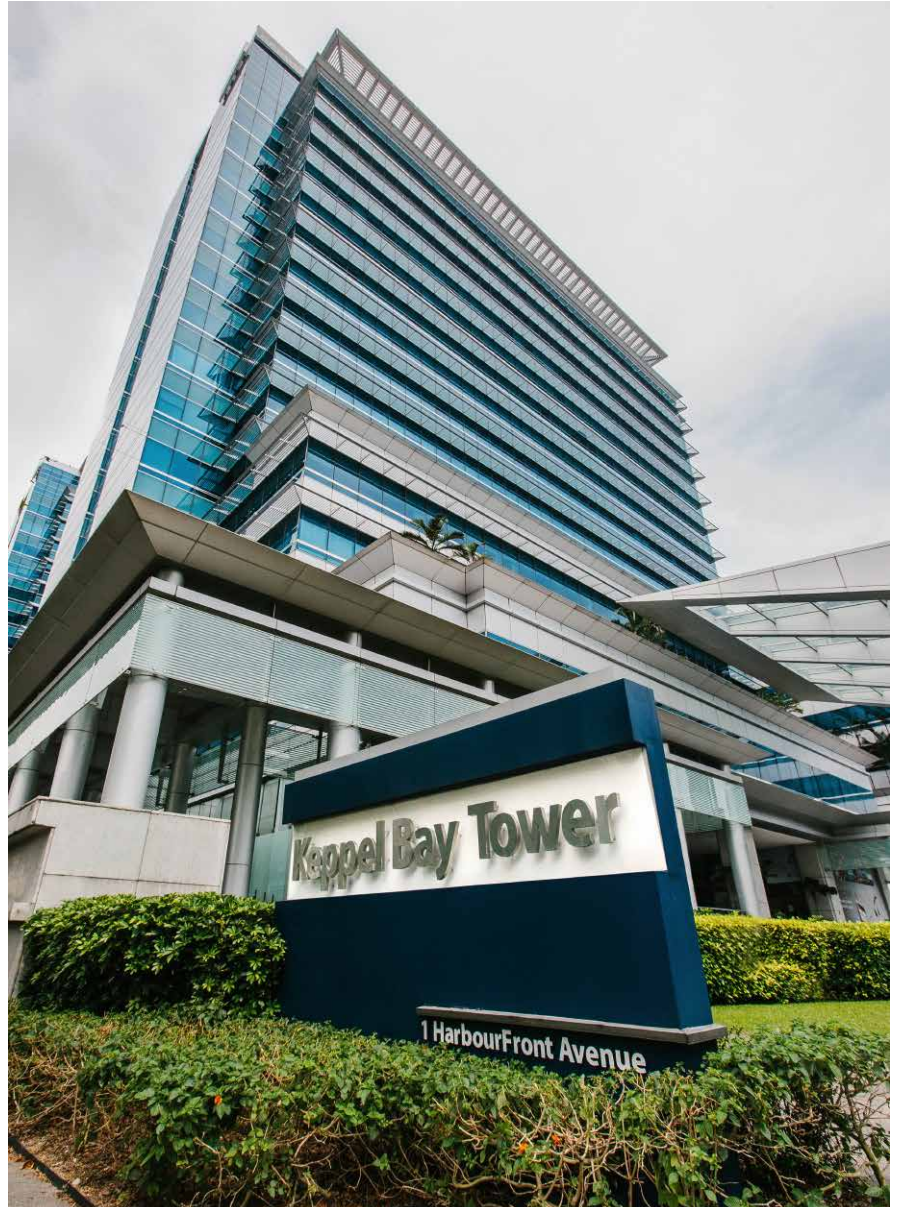


Photo: © Keppel

required to power more than 250 five-room HDB flats in Singapore for one year. Keppel Land also estimates it can achieve annual water savings of about 7,000 cubic metres, which is equivalent to the amount of water in three Olympic-size swimming pools. These savings in energy and water translate to cost savings of approximately \$250,000 annually.

If the technologies are applied to the entire building, the annual energy consumption of Keppel Bay Tower is estimated to be further reduced to 92 kWh/m² per year.

¹ The estimated annual energy consumption of Keppel Bay Tower is within the Top Quartile of large office buildings in the BCA Building Energy Benchmarking Report 2017

BEX Asia and MCE Asia return as part of Singapore Green Building Week 2018



Opening ceremony of Singapore Green Building Week. From left to right: Mr. Tan Swee Yiow, President of Singapore Green Building Council, Mr. Lee Fook Sun, Chairman of BCA, Mr Lawrence Wong, Minister for National Development and Second Minister for Finance, Mr. Hugh Lim, Chief Executive Officer of the Building and Construction Authority (BCA), Debbie Evans, President, Southeast Asia and Australia, Reed Exhibitions, and Michelle Lim, Managing Director, Singapore, Indonesia and Malaysia, Reed Exhibitions. Photo: © Reed Exhibitions

Singapore – The leading trade show for the green building industry, Build Eco Xpo (BEX) Asia, opened its doors from 5–7 September 2018 at Marina Bay Sands in Singapore.

Key industry players presented a number of solutions and innovations to trade visitors, aimed at making the built environment more sustainable. This year's BEX Asia was once again held with the Mostra Convegno Expocomfort (MCE) Asia show, which is dedicated to HVAC-R, sanitary, plumbing and solar energy solutions. Both shows took place under the umbrella event of the Singapore Green Building Week.

Some 10,654 international visitors, including green building industry professionals, thought leaders, policy makers and end-users, representing 54 countries, congregated at the exhibitions to discuss and exchange ideas on the latest innovations that will shape the future of sustainable cities.

Together, the two shows attracted worldwide attendance and participation of about 400 exhibitors from 31 countries across a combined floor space of 9,000 square metres. In addition, 311 one-to-one business meetings were facilitated at the shows.

Besides being a platform for new products and solutions, BEX Asia and MCE Asia also served as a focal point

to educate trade visitors and industry professionals on the latest trends in green buildings by organising a number of seminars titled Green View and Mostra Xchange at the venue. Around 40 industry experts gave talks on various topics that might impact the future direction of the built environment sector. In partnership with supporting industry organisations such as Institute Engineers of Singapore, The American Society of Heating, Refrigerating and Air-Conditioning Engineers, and the Indoor Air Quality Association, the

seminars showcased a selection of highly curated and qualified sessions on sustainable building solutions, and energy efficiency.

BEX Asia and MCE Asia were also co-located with the annual International Green Building Conference (IGBC). With the theme, "Build Green: Build Smart. Build Communities", IGBC 2018 attracted participants from across the entire building and construction value-chain, committed to understanding and putting into action real-world, tangible and leading green building solutions.



Visitors taking a look at the products and services exhibited BEX Asia and MCE Asia. Photo: © Reed Exhibitions

AccorHotels opens new hotel in the heart of Gangnam

Gangnam, South Korea – Located in trendy Gangnam district, the 108-room Alcove Hotel Seoul opened its doors in October 2018. Designed by SungGahun, Alcove Hotel Seoul Managed by AccorHotels & Ambassador is an urban hideaway for business and leisure travellers featuring seven room types with large private outdoor spaces and a stunning rooftop bar that overlooks the UNESCO World Heritage Site of Seolleung and Jeongneung (Seonjeongneung) Royal Park.

Overlooking the verdant Seonjeongneung park views, Alcove Hotel Seoul strives for a leitmotif of peaceful ambience with its guest rooms featuring solid wood furnishings with warm decor complemented by premium Simmons bedding and French Nuxe branded bath amenities.

The element of peace extends to the culinary offerings at its restaurant, café, and two bars. For guests looking to keep up with their fitness regime while on the road, the state-of-the-art Bluewood Fitness & Pilates gym and fitness centre is fully equipped with the latest Technogym and Balanced Body Pilates equipment.

Guest staying at the hotel can visit the royal tombs of the ninth King Seongjong and the 11th King Jungjong of the Joseon



Club Limit rooftop bar. Photo: © Alcove Hotel Seoul

Dynasty at the serene forest park. Also within a short walking distance is COEX Mall, Asia's largest underground shopping centre, which houses the country's largest COEX Aquarium with over 180 display tanks and Kimchi Museum. Hotel guests can also book free car services to visit these nearby attractions.

German European School Singapore officially opens S\$135 million campus at Dairy Farm Lane

Singapore – The German European School Singapore (GESS) held an official launch ceremony on 13 September 2018 to mark the opening of its brand-new 30,500 square metres campus at Dairy Farm Lane.

The guests of honour – Minister of Foreign Affairs, Dr Vivian Balakrishnan and State Secretary, The Federal Foreign Office, The Federal Republic of Germany, Mr Andreas Michaelis, together with 10 European ambassadors and country representatives, officiated at the launch, marking a new chapter of GESS' 47-year journey in Singapore.

The GESS campus, which has a capacity for 2000 students, caters to the strong EU community, which has over 10,000 companies operating in Singapore. The launch reaffirmed

the strong ties between the EU and Singapore, with a pledge from GESS to forge strong bonds with the local community, while providing a creative and conducive place for students to thrive in.

The new campus, which cost S\$135 million to build, features a wide range of facilities that will act as an incubation space for students of varying interests and talents. These range from creative spaces, performing arts facilities to sports amenities like an Olympic-sized swimming-pool and football field. As part of efforts to give back to the community, the Cooking Lab, swimming pool, auditorium and football field are open to the local community based on availability.

In line with the school ethos of caring for the environment, GESS received the Gold^{Plus} Award in 2016 even before it was built, as it had exceeded the standards of Singapore's Building and Construction Authority's Green Mark. Features include an energy-efficient water cooled chiller plant and energy-efficient light fittings. In support of the school's sustainability initiatives, the canteen will also feature green-practices, with investments in re-usable serving plates, bowls and biodegradable plastic.

As the new campus is located near two nature reserves, GESS will also be stepping up its environmental education, weaving it into its curriculum, and will be working together with the community on environmentally oriented activities in surrounding areas.



Photo: © German European School Singapore

Chief Sustainability Officer of CDL receives honour of a 2018 United Nations Global Compact SDG Pioneer

Singapore – The United Nations Global Compact (UNGC) has conferred Ms. Esther An, Chief Sustainability Officer at City Developments Limited (CDL), with the honour of being one of the 2018 UN Global Compact Sustainability Development Goals (SDG) Pioneers. Ms. An is the first individual from Singapore and one of the first two Southeast Asian women to receive this prestigious recognition. Specifically, she was named the UN Global Compact SDG Pioneer for Green Infrastructure and a Low-Carbon Economy.

Each year, the UNGC celebrates a group of SDG Pioneers – individuals from around the world who are championing the SDGs through their own companies and inspiring others to join the movement. Hundreds of nominations were received from diverse regions globally, from which ten finalists were selected through a rigorous committee, exemplifying how business can be a force for good in addressing the challenges we face as a global society. The SDG Pioneers were recognised during the UN Global Compact Leaders Summit 2018 on 24 September at the Headquarters of the United Nations in New York.

The SDG Pioneers Selection Group, comprised of representatives from the UN Global Compact Board Members, Expert Networks, Global Compact Network Council, Academia, UN Focal Points and previous SDG Pioneers, voted on the nominees based on a set of criteria. This criteria covers the individual's commitment to embed the Ten Principles of the UNGC and raise awareness on the SDGs, as well as their engagement with the UNGC and its Local Networks.

Ms. An said: "For more than two decades, sustainability has been strategically integrated into all aspects of CDL's business and operations. We apply a three-pronged strategy as a property developer, an asset owner and a corporate citizen. We develop green buildings, manage them in a resource-efficient way and engage stakeholders on sustainability. Since 2016, CDL has also taken the initiative as one of the first companies in Singapore to align our material issues with the SDGs by effectively managing our Environmental, Social and Governance (ESG) issues and building innovative collaborations across sectors. We are poised to stay dynamic and resilient in delivering lasting value for our business, investors, stakeholders and the environment."



Ms. Esther An. Photo: © CDL

In addition to her work at CDL, Ms. An has served on the Management Committee of Global Compact Network Singapore (GCNS), the local chapter of the UNGC, since 2005. Since 2011, Ms. An initiated the flagship CDL-GCNS Young CSR Leaders Award, nurturing over 1,300 young leaders. The programme was rebranded as CDL-GCNS Young SDG Leaders Award in 2018, to educate and empower young leaders with SDG knowledge and skills while inspiring companies in Singapore to take actions for the SDGs. She also plays an active role in the organisation of GCNS' annual Summit and has been instrumental in encouraging SMEs to join the local chapter.

Ms. An has played a pivotal role in advancing Singapore's national sustainability initiatives and sustainable development in the region. She conceptualised and led the establishment of the zero-energy Singapore Sustainability Academy (SSA). Developed by CDL, the SSA is Singapore's first major ground-up, tri-sector partnership in support of the SDGs and climate actions. Since opening in June 2017, the not-for-profit space dedicated to sustainability training and outreach has been an important catalyst in bringing together the People, Public and Private sectors to advance sustainable development in Singapore and the region. In its first year of operations, the SSA has held over 120 sustainability-focused events and training courses, and engaged over 4,500 representatives from the People, Public and Private sectors.

GCNS will continue to work with Ms. An on furthering the sustainability agenda in Singapore and the region.

Ascott Reit acquires a prime site in Singapore for maiden development project

Singapore – Ascott Residence Trust (Ascott Reit) has acquired a prime greenfield site for S\$62.4 million for its maiden development project. It will build the first co-living property in Singapore's research and innovation business hub, one-north. Located at Nepal Hill amidst 400 companies, 800 startups and 50,000 professionals, the property is expected to be managed by its sponsor, The Ascott Limited (Ascott) under the co-living brand, lyf, targeted at the rising millennial segment. To be named lyf one-north Singapore, the property will offer 324 units (subjected to change). It is slated to achieve Temporary Occupation Permit by 2020 and open in 2021.

The 60-year leasehold site was put up by the JTC Corporation (JTC) for sale in a two-envelope concept and price tender. Ascott Reit's concept proposal features the creative use of communal spaces, a holistic design centred on building a vibrant and collaborative community, as well as comprehensive programmes which promote social bonding, wellness, personal development and business

networking.

Mr Bob Tan, Ascott Residence Trust Management Limited's (ARTML) Chairman, said: "Ascott Reit is acquiring a prime site in Singapore to build a property on our own for the first time. Compared to acquiring completed properties, this investment not only allows us to have an early entry at a lower cost, enjoy development profits, but we can also expect higher yield in the long term. This development only accounts for about 3 percent of Ascott Reit's total asset value, which is within the 10 percent regulatory limit on property development for REITs. Singapore is a safe environment for construction, and by designing and building the property ourselves with customised specifications and having it managed by our sponsor, Ascott, we can be assured of building quality and strong operating performance. After the acquisition, Ascott Reit's gearing will be 37.2 percent, which is below the 45 percent gearing threshold, thereby offering adequate debt headroom for the funding of the acquisition."



Photo: © Ascott Residence Trust

ASI positioned for further growth with new Managing Director



Dubai, UAE – ASI, a subsidiary of ASGC Construction LLC delivering turnkey fit-out solutions, has named Dimitri Papakonstantinou as the company's new Managing Director.

Papakonstantinou joins ASI with close to two decades of experience within the construction, project management and fit-outs sector, including 14 years based in Dubai. Amongst his previous roles, he was a founding member of Plafond Fit Out LLC in 2008, where he served as Managing Director since 2013.

Throughout his career, he has been involved in numerous successful projects and has a proven track record of increasing corporate revenues and profitability while managing teams of more than 1,700 employees.

Speaking on his appointment, Papakonstantinou said: "I am very excited to have joined ASI in the capacity of Managing Director. As the fit-out specialist of the ASGC group of companies, I look forward to expanding the business initially across the UAE, with ambitions to progress further afield in the years to come."

Benoy completes first scheme with Alibaba – Ali Centre in Shanghai

Hong Kong – Located in the business district of Hongqiao, Shanghai, the new Ali Centre covers three plots and includes retail, commercial offices and two central squares. The development consists of four buildings covering a gross floor area of over 140,000 square metres. The lower floors of each will house new online and offline retail businesses which will be accessible to the public, while the upper floors are given to international Grade-A

office spaces.

The design philosophy behind the Ali Centre was to create an open and interconnected complex conscious of innovation and reflecting the characteristics of mid-to-high-end commercial needs. The overall concept looks at space maximisation, comfortable pedestrian flow and open-air spaces.

As the Interior Designer, Benoy brought together simple elegance

with science and technology to inform the interior style across each of the buildings. Through the logical division of indoor space, material use, lighting effects, colour application and furniture selection, Benoy's team reflects a subtle, harmonious, comfortable and modern interior environment in line with Alibaba's brand. Benoy also worked closely with Alibaba to ensure the retail and commercial office spaces would have their own identity and visibility yet still be united within the Ali Centre development.

Adhering to the design requirements outlined by Alibaba, Benoy created a strong arrival experience across the building's lobbies – ensuring consistency for the e-commerce brand. The 'Ali orange' has been integrated throughout Benoy's design, with the signature colour applied throughout the reception areas, information desks and elevator halls.

"Creating a sense of belonging from the outset was critical to our design approach. We wanted to reflect the Alibaba brand as a destination through colour and identifiable design elements from the moment a visitor, guest or worker enters the development," said Simon Wong, Director at Benoy.



Photo: © Benoy

Deyaar announces 'considerable progress' for projects in 2018

Dubai, UAE – Following the handover of two flagship residential projects within its portfolio earlier this year, Deyaar Development PJSC ("Deyaar") has announced that the construction of Afnan and Dania districts in its Midtown development have reached the halfway point, with units' sale in both districts exceeding 87 percent mark.

A family-friendly community with a built-up area of 5.5 million square feet, Midtown comprises 27 buildings across

six districts, that will share a single-level podium covering retail, parking and essential services. Situated in Dubai Production City, Midtown offers easy access to many local amenities, and provides excellent transport links to Dubai International Airport, Dubai Mall, Mall of the Emirates, and Al Maktoum International Airport, as well as the Dubai Expo 2020 site. The construction of Afnan and Dania Districts are now at 50 percent completion.

Work on the Deyaar Millennium Hotel and Serviced Apartments is expected to wrap up by the end of 2018. Located close to Mall of the Emirates in Al Barsha to tap into the increasing demand for hotel and serviced apartment accommodation in the area. Deyaar Millennium has a total built up area of more than 450,000 square feet. The hotel will have 408 units, including 299 hotel rooms, of which 15 will be suites, in addition to 109 serviced apartments



Midtown by Deyaar comprises 27 buildings across six districts, that will share a single-level podium covering retail, parking and essential services. Photo: © Deyaar Development PJSC

– a mix of 93 one-bed and 16 two-bed apartments.

In March 2018, Deyaar handed over the residential towers of the Mont Rose development, a project located in Dubai Science Park. Mont Rose comprises three towers – one with hotel apartments, and two residential. Both residential towers feature 146 one-bedroom, 144 two-bedroom, and seven three-bedroom apartments. The hotel apartment tower has been designed to offer 126 studios, as well as 72 one-bedroom apartments.

Since July 2018, the handover of Deyaar's iconic residential tower, The Atria, has been ongoing. The Atria is a luxury mixed-use twin tower complex over 1.4 million square feet that marks Deyaar's foray into the hospitality sector. The residential tower comprises 219 units over 30 floors, including one to three-bedroom apartments, three-bedroom duplexes, and four-bedroom penthouse. The hotel apartment tower is composed of 347 bespoke apartments, including studios, one, two and three-bedroom apartments, and three-bedroom duplex units, with construction now complete.

Benoy Shanghai celebrates 10th anniversary

Shanghai, China – Following a momentous 70th year in 2017, Benoy celebrated its 10-year anniversary in Shanghai on 30 August 2018. Alongside a newly unveiled design studio and a collection of openings and completions, Benoy Shanghai has also shown it is looking to the future with a portfolio of significant projects which aim to shape the next decade for the design studio in China.

Benoy established its first studio outside of the UK in Hong Kong in 2002, opening the gateway to the Asia Pacific region. Building upon a suite of successful collaborations and projects being delivered in China from Hong Kong, Benoy founded its studio in Shanghai in 2008. Established by a small team, Benoy set down roots on Nanjing Road with support from colleagues from the Hong Kong and London studios. Today,

this small founding team is still with Benoy – Qin Pang, now Director and Head of Shanghai, alongside Emi Wang, Carrie Mei, Wei Tang and Sherry Wu.

From a small team of five, the Shanghai studio has undergone immense growth over the last decade. The team now numbers almost 80 and works from a newly refurbished studio within a development designed by Benoy, ICC Shanghai.

"I am incredibly proud to have been one of our first founding members and to still be working alongside the same team that joined Benoy Shanghai back in 2008," said Qin Pang. "The milestone we celebrate today is a testament to Benoy's culture as a global family as well as the talent and commitment of our team and the partners we work with."

The expansion of the Shanghai studio and team reflects the growing portfolio of work undertaken by Benoy. The team has celebrated a number of project completions in 2018 including the twin tower development The New Bund World Trade Center (Phase 1) in the Qiantan Central Business District, the innovative retail village Joy City in Hangzhou, as well as the upcoming Alibaba HQ in Hongqiao.



Benoy officially celebrated its anniversary with John Edwards, British Consul-General in Shanghai. Photo credit: Benoy

Construction under way at Nakheel's AED713 million residential twin towers at Dragon City

Dubai, UAE – Master developer Nakheel has signed a construction contract for Dragon Towers, its new, twin-building residential complex with a total development value of AED713 million, to be built at Dubai's rapidly-expanding Dragon City mixed-use community.

Under the AED552 million contract, handed to UAE-based Ali Mousa & Sons Contracting, mobilisation will begin immediately, with anticipated completion in 2021.

Nakheel also confirmed that Dragon Towers' apartments will go on sale next week, and is among a range of other Nakheel projects being showcased at the upcoming Cityscape Global.

Directly-connected to the world-famous Dragon Mart retail and trading complex, the 37-storey, two tower project comprises one- and two-bedroom apartments; ground and first floor retail; four parking levels and a sixth floor podium-level clubhouse with a swimming pool, restaurant and gym.

Dragon Towers is a key component of Nakheel's ongoing retail, hospitality and residential expansion at Dragon City, which is already home to Dragon Mart 1 and its sister mall, Dragon Mart 2, plus an ibis Styles hotel. A new showroom and car park complex and a second hotel are in advanced stages of construction, with further expansions in the pipeline.



Photo: © Nakheel

Scott Brownrigg relocates its Singapore studio to Gateway West

Singapore – Scott Brownrigg, an award-winning international design practice, has moved its Singapore studio into a new office space in Gateway West, a 37-storey building located on Beach Road in the downtown core of Singapore.

According to Scott Brownrigg Singapore, the new office address provides a more central, prominent location that will meet the future growth aspirations for the studio.

A studio launch party was held at the new office on 13 September 2018 to celebrate the relocation. It was well attended by key clients and consultants from across the built environment industry both in



Mr Raymond Hoe, Director of Scott Brownrigg's Singapore Studio, speaking to guests during the new studio launch party. Photo: © Scott Brownrigg

Singapore and in the wider region.

Scott Brownrigg launched its Singapore studio back in 2013, with an official launch at Eden Hall, the British High Commissioners Residence. Five years on the move to its new offices reinforces the success of the Practice's Singapore operation, which over the last three years has seen the completion and opening of its first project – the University of Reading Malaysia, in EduCity and the appointment of Mr Raymond Hoe, who leads the studio.

Through the strong leadership of Mr Hoe, the team is growing, and has most recently seen the appointment of Project Director Mr Will Ringer, who joins the studio from the UK. Tasked with driving the Advanced Technologies Sector within Singapore and the wider region, Mr Ringer said of his appointment: "The Advanced Technology sector focuses on the transformative impact of technology on cities and architecture; we believe that this will be a key differentiator for Scott Brownrigg here in Singapore and the wider region. It is already gaining momentum with a number of live projects and a pipeline of exciting opportunities." The Advanced Technology Sector currently has a number of data centre projects including one for China Mobile in Tai Seng.

Wider work from underway from the Singapore studio includes a medical facility for the University of Newcastle in EduCity, Johor, set to complete in October, hotels – Park Inn by Radisson in North Luzon, Philippines and Vietnamese hotels – Bay Capitol Hotel in Danang, and Pearl Resort in Hoi An. The team also worked on the design competition for an international school in Manila – Everest Academy.

Recently completed projects by the Singapore team include the Newcastle Research and Innovation Institute for Newcastle University within the Devan Nair's Institute at Jurong East and DODID data centre on Tagore Road.

Of the move, Director Mr Hoe said: "The Singapore studio is undergoing a period of growth, as a result of a number of key wins within the region. The move to these new offices provides a more central, strategic location, and enables us to further develop our expertise and offering to clients."

The studio's 5-year plan focuses upon the key expertise areas of Advanced Technologies, Offices, Hospitality, Education, Transport and Aviation.

Aurecon engineers the Constellation at The Founder's Memorial in UAE

Abu Dhabi, UAE – In Abu Dhabi, Aurecon has engineered an unconventional public artwork to celebrate the life, legacy and values of the late Sheikh Zayed bin Sultan Al Nahyan, the founding father of the United Arab Emirates.

To commemorate Sheikh Zayed's 100th birthday, the UAE unveiled The Founder's Memorial to honour the founding father in 2018, thus creating a space where future generations can gain a deeper understanding of his legacy. Aurecon, was appointed to help bring the Memorial and the Memorial's monumental centrepiece – the Constellation – to life.

Designed by American renowned artist Ralph Helmick, the Constellation is a 3-D portrait of Sheikh Zayed, framed within a 30-metre tall prism-like pavilion that is open on two sides. The Sheikh's well-known likeness was respectfully recreated with a pointillist array of 1,327 "floating" geometric elements anchored to 1,110 strands of 30 metres long cables. These elements comprise varying sizes of the five complex polyhedrons known as "Platonic solids". As Sheikh Zayed is much beloved, every single solid had to be placed perfectly.

This is the first time Helmick has designed a public art sculpture of this scale. In fact, this icon counts among one of the world's largest public art installations. Aurecon's design goal was to design a buildable solution and engineer the structure, cables and materials to allow Helmick to articulate his masterpiece.

According to Steve Daniels, Aurecon's Global Facades Leader, the challenge was in creating an overall design solution which could continue in parallel with the artist's sculpture work. This resulted in a set of rules allowing structural design of the Constellation's "frame" and cables to continue while still providing the artist with a 'blank canvas' upon which to work.



Photo: © Aurecon

dormakaba included in Top Employer Brands 2018 by Influential Brands

Singapore – dormakaba Singapore Pte Ltd, a leading provider of access control and security solutions, has been included as one of Top Employer Brands 2018 by Influential Brands for the company's capacity to engage their employees, understand their values and develop meaningful human resources practices.



The company's performance was assessed based on three parameters: (1) Employee Engagement Survey, (2) Company Culture Values Survey and (3) HR Practices.

The Influential Brands programme celebrates and recognises brands, which have achieved a great engagement with employees in addition to the brand's continuous drive towards employer branding excellence.

As part of the recognition, dormakaba will be issued the Influential Brands logo and brand guideline for their immediate

use to communicate their employer branding's positioning and achievements with their different stakeholders including partners, employees, customers, suppliers and consumers.

The Influential Brands logo can be used across different touchpoints including: email signature, website, social media, packaging, advertisement and other corporate communications materials.

"The award is an excellent recognition of our employees' high level of engagement and commitment to the company's core values of Customer First, Curiosity, Performance, Courage, and Trust. I'm truly proud of the Team," said Rowan Tan, Managing Director/Senior Vice President ASEAN, AS APAC, dormakaba Singapore Pte Ltd.

Since its founding in 1978, dormakaba Singapore has been the regional headquarters for ASEAN. The year 2018 also marks the 40th year of dormakaba's presence in Singapore, and the inauguration of their new facility is a further testament of its continued confidence in the country.



Mr Rowan Tan



dormakaba's new facility in Singapore.

ABS 2018 focuses on building and innovating for a smart future



Ribbon cutting ceremony to mark the official opening of ABS 2018 and SIA Conference 2018. Photo: © CEMS

Singapore – The Architecture & Building Services (ABS) 2018 series returned to Marina Bay Sands again this year from 2-4 October with a bigger and better exhibition showcase.

Guest of honour Mr Heng Swee Keat, Minister for Finance, opened the exhibition in the presence of distinguished guests and industry players. In his keynote address, Mr Heng suggested three areas – urban design, productivity and technology – to make Singapore even more endearing and liveable.

In his speech, Mr Edward Liu, PBM, Group Managing Director of CEMS Pte Ltd, commented on the success of the show: "We are very proud that our vision for a comprehensive platform to gather the architecture and building services industries, here and in the region, has grown and now embraces six international exhibitions and 14 industry conferences, covering the entire spectrum of architecture and building services."

ABS 2018 consisted of five exhibitions to provide a comprehensive and integrated platform for all the building needs in Singapore and across the region, under one roof. Altogether, the five shows – iFaME 2018 (International Facility Management Expo), LED & Light Asia 2018, Safety and Security Asia 2018, Fire & Disaster Asia 2018, and Work Safe Asia 2018 – comprised of 239 exhibitors from 15 countries. ABS 2018

hosted over 10,000 visitors and delegates

Running concurrently to ABS 2018 was the fifth edition of ArchXpo 2018. Organised by Conference & Exhibition Management Services Pte Ltd (CEMS) and Singapore Institute of Architects (SIA), ArchXpo provided manufacturers and suppliers to showcase their various building products and solutions to architects, interior designers, developers and other building professionals attending the show. SIA also held its annual conference in conjunction with ArchXpo to create a more synergic presence.

During the exhibition, ABS 2018 presented its inaugural showcase of Smart Solutions at the Smart Pavilion, which simulated a commercial office building and township including a Smart Home. The commercial office building was featured as a high security building for visitors to experience the ease of access of registered personnel without the hassle of carrying access cards. The pavilion also demonstrated how different devices could be controlled with a single application in the office.

In addition to the six exhibitions, ABS 2018 also featured 14 conferences, including workshops and master classes, carried out by industry experts from Singapore and around the world on trends and challenges in the built environment.

Khidmah UAE and KSA awarded Global Standard Certifications



Abu Dhabi, UAE – Demonstrating its relentless commitment to health, safety, quality and environment (HSQE), Khidmah LLC, one of the region's leading integrated property solutions providers, has been awarded a number of internationally recognised certifications for its United Arab Emirates and Saudi Arabia operations. The certificates were presented to Khidmah during a ceremony attended by the United Kingdom Ambassador to the UAE His Excellency Patrick Moody and Khidmah's Chairman, Jassem Saleh Busaibe and Managing Director, Jahed Rahman as well as other senior management from Khidmah.

Following an in-depth audit and examination by the British Standards Institution (BSI), Khidmah's UAE and KSA operations received certifications accredited by the UK's National Accreditation Body UKAS ISO 9001:2015 Quality management systems, ISO 14001:2015 Environment management systems,

ISO 50001:2011 Energy management systems, and the OHSAS 18001:2007 Occupational Health and Safety management systems.

The ISO and OHSAS certifications give Khidmah visibility to measure, monitor and manage its carbon footprint across different geographical locations, and have improved cross-functional teamwork at different levels of the organisation. The Energy management certification standards provided a framework to streamline Khidmah's energy review and energy management activities, thus improving its energy performance across residential, commercial and mixed-use properties in the UAE and KSA. Customers stand to benefit from Khidmah's Energy experts who bring innovative and time bound solutions to manage and optimise energy consumptions of their assets. The certifications also underline Khidmah's commitment to sustainability and reducing its carbon footprint.

8M Real Estate introduces the 8M Collective, a new boutique accommodation concept

Singapore – 8M Real Estate, one of Singapore's leading property investment companies, has announced the launch of its new hospitality management and operations arm called '8M Collective'. Founded in 2014 by Ashish Manchharam, 8M Real Estate has built a firm reputation for injecting new life into gentrifying locations through niche investments, repositioning and management of Singapore's heritage buildings.

With 42 conservation properties

worth a total of over S\$500 million, 8M Real Estate has reinvigorated the characters of Gemmill Lane, Amoy Street, Hong Kong Street and Tanjong Pagar Road, amongst others. Curating each into unique F&B destinations, 8M Real Estate has assembled notable independent tenants such as Employees Only, Luke's Oyster Bar & Chophouse, Ding Dong, Birds of a Feather, boCHINche and Nineteen80 in these vibrant up and coming areas.

A natural progression of the company's unrivalled track record in boutique F&B tenant curation, 8M Real Estate has now turned its focus towards not only acquiring and owning properties within the hospitality sector, but overseeing their management too. Under the new 8M Collective platform, the strategy will see the creation of spaces for guests who are looking for more than just a place to stay. The portfolio of properties will have

a comfortable, city living experience, united by strong design aesthetics and stylish accommodation with the best food, drink and retail under one roof.

"We're excited about adding a new dynamic to 8M Real Estate with the launch of our hospitality arm, 8M Collective. We have an eye for sourcing properties with authenticity and soul and look forward to injecting these brand values into the customer experience too. We see huge opportunity in the accommodation market here in Singapore and with our expertise, it makes sense for us to source the best teams, management and most effective model for each individual property, in order to strengthen our plan to make a positive impact on the local areas we invest in," said Ashish Manchharam.



Ann Siang House. Photo: © 8M Real Estate

Lead8 appointed lead designer for China Resources first chained IMAX cinema at Taiyuan, Shanxi

Hong Kong – On 15 September 2018, international architecture and design studio, Lead8 unveiled the extensive interior architecture and design renovations for the MIXC Cinema City Complex at Taiyuan, Shanxi – the first chain MIXC Cinema City theatre, and a new generation of IMAX theatres in northern China.

Lead8 was appointed by China Resources to lead the design for MIXC Cinema City complexes in four major Chinese cities: Shenzhen Bay, Shanxi Taiyuan, Hebei Shijiazhuang and Fujian Xiamen. The grand opening dates for Hebei Shijiazhuang and Fujian Xiamen are slated for November 2018, with Shenzhen Bay in December 2018 next.

MIXC Taiyuan cinema features eight screens with a sleek contemporary two-tiered purpose led auditorium, each including a bar and VIP area. Lead8 took a hybrid approach curating a new performance venue with a bar, bookshop and cafe. Inspired by iconic hotel lobbies, the project incorporates materials, design details and artistic elements to enhance the movie experience.

"Watching a movie at the cinema is still a joy and an escape from our busy routine. The client brief called for refined cinema facilities. We built on these needs and reimagined the potential of the conventional cinema. MIXC Cinema City sets a new design benchmark for the movie cinema; but more importantly, this project offers movie-lovers a new type of cinematic experience," said Claude Touikan, Co Founder and Architecture lead at Lead8.



Photo: © Lead 8

The ticketing lobby is centered with a grand lounge, a sophisticated bar, enhance with ambience created by the illuminated, textured walls. This is a fresh and luxurious, bright and modern take on cinema design.

MIXC Cinema City is wholly-owned by China Resources. China Resources plans to open 50 more cinema complexes in the next three to five years.

Students and young professionals debate future of sustainable construction

Zurich, Switzerland – More than 50 young architects and engineers participated in the international LafargeHolcim Next Generation Awards Lab hosted by Universidad Iberoamericana (IBERO) in Mexico City. Representing 25 countries, the young professionals exchanged experiences and ideas on the future of sustainability in building and construction. Introductory lectures by acclaimed Mexican architects Tatiana Bilbao and Michel Rojkind, and IBERO Director of Architecture, Urbanism & Civil Engineering, José Luis Gutiérrez, inspired the participants. Three project teams each received a two-year LafargeHolcim Research in Practice Grant of USD 75,000 based on the evaluation of their project at the Lab.

The first LafargeHolcim Research in Practice Grant (RPG) recipients were announced at the global Awards ceremony in Mexico City by Marilyne Andersen and Harry Gugger, both members of the Board of the LafargeHolcim Foundation and professors at the Swiss Federal Institute of Technology (EPFL Lausanne). Harry Gugger explained that the core aim of the RPG program is to mentor and financially support emerging professionals to conduct leading edge,



25 countries were represented at the international LafargeHolcim Next Generation Awards Lab hosted by Universidad Iberoamericana (IBERO) in Mexico City. Photo: © LafargeHolcim Foundation for Sustainable Construction

practice-related research in the field of sustainable construction. "The grants are a vital support for developing the knowledge needed to proactively meet the challenges facing the materials industry and the built environment," added Marilyne Andersen.

LafargeHolcim Research in Practice Grants for young professionals in Argentina, Egypt and South Africa

A grant was conferred upon Heidi Boulanger (van Eeden), University of Pretoria (South Africa), to pursue her research on integrating production

facilities for construction material into rural communities, creating new urban nodes. Stefano Romagnoli, Juan Cruz, and Tomás Pont, Universidad Nacional de Córdoba (Argentina), will use their grant to advance an infrastructure-landscape project for the generation of electric power by harnessing tidal currents. Nada Nafeh, American University in Cairo (Egypt), will further develop an approach to improve living conditions in informal settlements; her vision has the potential to transform architecture from the "design of products" to the "design of processes."



Announcement of LafargeHolcim Research in Practice Grant recipients by Marilyne Andersen and Harry Gugger, both members of the Board of the LafargeHolcim Foundation and professors at the Swiss Federal Institute of Technology (EPFL Lausanne). From left: Heidi Boulanger (van Eeden), Nada Nafeh, and Stefano Romagnoli and Juan Cruz. Photo: © LafargeHolcim Foundation for Sustainable Construction



Every seat in the auditorium of Universidad Iberoamericana (IBERO) in Mexico City occupied - opening speech by Marc Angélil, Professor at the Swiss Federal Institute of Technology (ETH Zurich) and Head of the Academic Committee of the LafargeHolcim Foundation for Sustainable Construction. Photo: © LafargeHolcim Foundation for Sustainable Construction

Saucier + Perrotte wins RAIC Gold Medal

Ottawa, Canada – The founders of Saucier + Perrotte Architectes, a Montreal firm that for 30 years has consistently produced refined, elegant and modern buildings – many for the public – are the recipients of the 2018 RAIC Gold Medal. Gilles Saucier, FIRAC, and André Perrotte, FIRAC, founded Saucier + Perrotte Architectes in 1988. The firm represented Canada at the Venice Architecture Biennale in 2004 and has received more than 100 awards, including eight Governor General's Medals in Architecture and the Government of Quebec's Prix Ernest Cormier for lifetime achievement. Their work has been published widely.

"They have built and maintained a high quality of work for decades," said the five-member selection jury. "They are one of the few firms that are recognised both nationally and internationally."



Gilles Saucier.
Photo: © Justin Latour

The work is always innovative and interesting. It's timeless, consistently elegant, beautifully detailed. They integrate nature beautifully."

The Gold Medal will be presented at the RAIC/AANB Festival of Architecture, taking place in Saint John from May 30 to June 2.



André Perrotte.
Photo: © Justin Latour

Saucier + Perrotte have designed theatres (Usine C and Cinémathèque Québécoise in Montreal); commercial spaces, (the Michel Brisson boutiques and ScandinaVe Les Bains Vieux Montreal); garden pavilions (First Nations Pavilion at the Botanical Garden in Montreal), and the Canadian

embassy in Abu Dhabi.

The firm's university projects include the Perimeter Institute for Theoretical Physics in Waterloo and the UBC Faculty of Pharmaceutical Sciences (with Hughes Condon Marler Architects) in Vancouver.

They have also completed sports facilities such as the new Stade de Soccer de Montréal (with HCMA Architecture + Design), as well as private residences, exhibitions and art centres. Ongoing major projects include River City, a 1,000-unit LEED Gold master plan in Toronto.

Mr Saucier is the firm's design partner while Mr Perrotte is the project architect in charge of coordinating the design and construction process. Both are graduates of the Laval University school of architecture in Quebec City, and have lectured and taught across Canada and abroad.

Populous-designed SunTrust Park achieves LEED Silver

London, UK – The U.S. Green Building Council recently awarded Leadership in Energy and Environmental Design (LEED) Silver Certification to SunTrust Park, the new 41,000 seat home of the Atlanta Braves which opened in April of 2017. LEED is the preeminent rating system for design, construction and operation of high-performance green buildings. SunTrust Park achieved its Silver rating by utilising systems which improve water efficiency, energy performance and indoor air quality measures.

Populous design characteristics which support SunTrust Park's LEED Silver rating include reduced energy consumption through the use of high-efficiency LED lighting, low flow fixtures which reduced potable water use by 42 percent, an HVAC system which minimises the emission of ozone harmful compounds and extensive use of locally-sourced materials throughout the ballpark. Public transportation access within one-quarter mile of the stadium and facilities for electric and alternative fuel vehicles also contribute to a reduced carbon footprint for the venue.

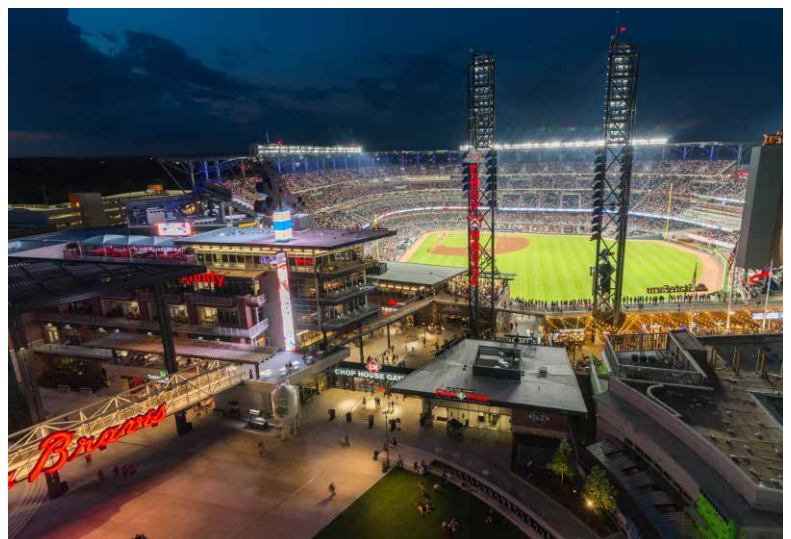


Photo: © Mortenson Construction

James Goettsch and James Zheng named co-CEOs at Goettsch Partners

Chicago, Illinois, USA – Goettsch Partners (GP) is pleased to announce that James Goettsch, FAIA, and James Zheng, AIA, LEED AP, have been named co-CEOs of the firm. In addition, Goettsch will continue as chairman, and Zheng will continue as president.

Goettsch and Zheng, principal partners in the firm, have worked closely together for more than 20 years, sharing the leadership and management of the firm since 2013. GP's board of directors named Zheng co-CEO in recognition of his expanding responsibilities and achievements over the last five years and his ability to enhance the practice going forward. Further, the board believes that the combined efforts of Goettsch and Zheng will strengthen GP's ability to deliver leading design and technical expertise at the highest service level.

"An established leader, James has been a critical part of the firm's success. The opportunity for us to collaborate



James Zheng. Photo: © Goettsch Partners

even more closely brings a combined perspective that will improve the firm's work and performance," said Goettsch.

In his expanded leadership role, Zheng will focus on developing a strategy for future growth and strengthening the firm's global identity. He will continue to be directly involved in the planning and design of large-scale office, hospitality, residential and mixed-use developments



James Goettsch. Photo: © Goettsch Partners

worldwide, applying his expertise in design, management, operations and business development.

As chairman and co-CEO, Goettsch will continue to lead the direction and quality of the firm's design activities, directing the design of multiple significant projects within the office and expanding the firm's business.

Perkins+Will's Los Angeles studio announces new leadership for corporate and commercial projects

Los Angeles, California, USA – The Los Angeles office of global architecture and design firm Perkins+Will has appointed David Sheldon to lead its practice focused on mixed-use, corporate, and commercial architecture.

Recognised as a dynamic, transformative leader with over 20 years of experience, David Sheldon's portfolio includes work on both the landlord and tenant representation side. He has been instrumental on major mixed-use design strategies with companies like Simon, GGP, and Macerich, as well as high-profile tenant-led work with brands such as Equinox, Erewhon, Cinepolis, and SoulCycle.

"David Sheldon joins the LA Practice with a unique set of skills. He is a consummate collaborator and communicator who understands the critical link between a strong personal relationship and the ability to help guide a client's vision into a strategy for success," said Eric Aukee, the LA office's Managing Director.

David's previous experience includes the launch of the renowned Jerde Partnership in Amsterdam, and the complete rebrand of his former LA-based firm, where he led a strategic implementation that aligned the firm's business with unique



David Sheldon. Photo: © Perkins+Will

client brands, resulting in unprecedented growth in terms of quality of clients and projects. In 2016, David launched a highly successful annual symposium dedicated to analysing the future of retail and commercial real estate development.

KONE wins first KONE UltraRope® order in North America

Helsinki, Finland – KONE has won an order to provide elevators for a 54-storey tower at 110 North Wacker Drive in the Chicago Loop business district. The project marks the North American debut of KONE UltraRope®, a revolutionary

elevator hoisting technology that sets a new benchmark for high-rise buildings.

The super-light rope provides unrivalled elevator eco-efficiency, reliability and durability while also improving elevator performance. KONE UltraRope can enable elevator travel heights of up to one kilometre (3,300 feet).

"This groundbreaking solution supports the design of more sustainable, higher-performance buildings that are better equipped to meet the demands of the urban environments of tomorrow," said Larry Wash, Executive Vice President, KONE Americas.

The tower will be approximately 244 metres (800 feet) in height and contain 149,000 square metres (1.6 million square feet) of space, alongside exceptional amenities. KONE will provide 30 traction elevators and 10 turnstiles for the project. Specifically, the building will house 24

KONE Mini-Space™ passenger elevators with high performance cars: the elevators will operate at speeds of up to eight metres per second (1,600 feet per minute). Also included will be the following smart building solutions: KONE Destination, KONE Access, KONE InfoScreens, KONE RemoteCall™ and fully-integrated KONE Turnstiles that assign an elevator at the point of entry through the building's smart lobby.

KONE will also provide four energy-efficient machine room-less passenger elevators, and two service elevators. The service elevators are innovative, 3,600-kg (8,000-lb.) units, which travel at speeds of up to six metres per second (1,200 feet per minute) and feature KONE UltraRope.

KONE is tentatively scheduled to begin elevator installation during Q1 of 2019 and be complete in Q4 of 2020. 110 North Wacker Drive is scheduled for completion in Q4 of 2020. The project is a joint development between owners The Howard Hughes Corporation and Riverside Investment & Development Company. Goettsch Partners is the project architect. Clark Construction Group – Chicago, LLC, is the general contractor. KONE booked the order in the first quarter of 2018.



110 North Wacker Drive.

David Chipperfield Architects wins commission to restore Shanghai Municipal Council Building

London, UK – Following a multi-stage international competition, David Chipperfield Architects Shanghai has been commissioned to restore the Shanghai Municipal Council Building (SMCB) and complete its unfinished wing.

Filling an entire urban block in the old city centre, the SMCB is listed as a Cultural Heritage Building and was formerly the site of the British Municipal Council and later the Shanghai Municipal Government. Due to material shortages after World War I construction ended in 1922 with only two thirds of the building complete.

In addition to opening the existing buildings for public use, the new extension will complete the originally proposed volume, framing a large central public courtyard.



Photo: © David Chipperfield Architects

thyssenkrupp Technology confirmed for the Hudson Yards New York Development

Essen, Germany – thyssenkrupp Elevator has been contracted by The Hudson Yards Development Corp. to design and install up to 40 TWIN elevator systems for its 50 Hudson Yards building; 27 elevators for the 55 Hudson Yards building; and 12 elevator and escalator units for The Shed. Hudson Yards is the largest private real estate development in U.S. history and the largest development in New York City since Rockefeller Center.

thyssenkrupp will also provide its elevator predictive maintenance service MAX, the industry's first cloud-based solution, set to reduce elevator downtime by half.

According to Andreas Schierenbeck, thyssenkrupp Elevator CEO, "We are transforming the industry with groundbreaking mobility solutions that address the critical elements for a sustainable urbanisation, space availability and transport efficiency. We are very proud for having been selected by the Hudson Yards Corp. for this mega project, it shows how much building developers are acknowledging our efforts."



Photo: © RELATED

With TWIN, two cars operate independently in one shaft, efficiently using space and transporting up to 40 percent more passengers than conventional elevators. This will be the first TWIN elevator system installation in New York. Completion is set for early 2019.

Surbana Jurong and Autodesk collaborate to advance technology adoption and digital transformation

Toronto, Canada – Surbana Jurong and Autodesk Asia have signed a Memorandum of Understanding (MOU) to jointly promote advanced technology adoption, sustainable design excellence and digital skills development to bolster Surbana Jurong's competitive differentiation and technological leadership. At the heart of the collaboration is the extension of Building Information Modelling (BIM) beyond architectural design into Integrated Digital Delivery (IDD) for Surbana Jurong's projects and other transformative areas. These include Design for Manufacturing and Assembly (DfMA), using artificial intelligence for design, and leveraging BIM and mobile technology on the jobsite to enable cloud-based collaboration and reporting.

IDD is a key thrust under Singapore's Construction Industry Transformation Map (ITM). Enabled by BIM, IDD fully integrates processes and stakeholders along the value chain through advanced info-communications technology and smart technologies.



Wong Heang Fine (left) and Scott Herren shaking hands after signing the MOU.

"As a technologically driven leader in urban and infrastructure consulting, Surbana Jurong is committed to driving digital transformation across the built industry's value chain. This is why we value working with technology leaders like Autodesk who are as dedicated to innovating with their toolsets as we are on our projects," said Wong Heang Fine, Group Chief Executive Officer, Surbana Jurong Together, Surbana Jurong and Autodesk will also explore the development of a Centre of Excellence and robust training and development programme built on Autodesk technology to ensure the former

and its extensive partner ecosystem are future ready.

"A growing middle class creates inevitable demand for more housing, transportation, and infrastructure worldwide. Automation presents an opportunity to do things better and is key to ensuring that industry can deliver on these needs while balancing the need to preserve our environment and natural resources," said Scott Herren, Chief Financial Officer, Autodesk. "Surbana Jurong's leadership in these areas make it a standout force in the market, and we are excited about the next milestone in our continued collaboration," he added.

Marmomac 2018: natural stone in the forefront of urban redevelopment of cities of the future

Verona, Italy – Natural stone must become the key for sustainable urban development and urban redevelopment. This is what emerged yesterday at Veronafiere during the inauguration of the 53rd edition of Marmomac – the world's leading marble and technology sector event scheduled until Saturday 29 September – in the presence of the President and CEO of Veronafiere, Maurizio Danese and Giovanni Mantovani, the President of the Veneto Region, Luca Zaia, the Mayor of Verona, Federico Sboarina, the President of Confindustria Marmomacchine, Marco De Angelis, the Councillor for Urban Planning of Verona City Council, Ilaria Segala, and Marco dell'Agli, senior architect of the Mario Cucinella studio.

"Stone is a very ancient material," said President Danese. "That today is experiencing a new renaissance that Marmomac itself also interprets by simultaneously promoting two directions of development in the sector: design and technology," he added.

Natural stone and technology brands in Italian marble districts boast 3,300 companies throughout the country with more than 34,000 employees. Turnover comes to 4.2 billion euro, with a balance of trade in the black by 2.8 billion euro.

"Marmomac is a fundamental Italian manufacturing sector," said CEO Mantovani. "Yet one that is often relegated to a marginal role compared to other fields. In reality, facts and figures



Photo: © Foto Veronafiere-ENNEVI

prove the exact opposite. Marmomac has the merit of having revolutionised the once residual or luxury use of natural stone into everyday life and urban contexts," he added.

The inaugural round table titled 'Regenerating abandoned areas: an opportunity for our cities', during which architect dell'Agli illustrated three urban redevelopment projects in Milan, Aosta and Catania, included reports such as the one by the Governor of the Veneto region, Zaia, who highlighted the pioneering role of the Region as regards law on land

consumption, while also announcing that: "The Regional Housing Plan which has already achieved excellent results will be presented again in a reviewed form."

"Sustainability and urban redevelopment are among the objectives of municipal administration," said the Mayor of Verona, Sboarina. Veronafiere is also involved in the recovery of abandoned sites in the local area. "The redevelopment of the former fruit and vegetable market is a fine example," he added.

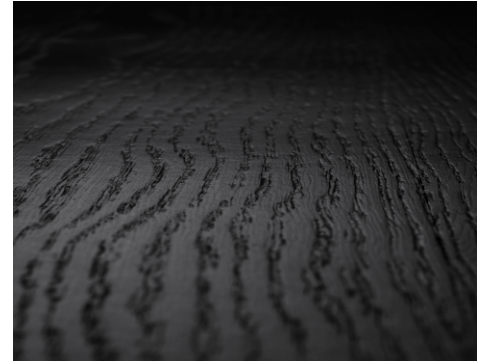
Bona introduces new brush technology that enables exciting wood floor effects

Malmö, Sweden – Bona, a leading name in wood floor treatment, has introduced a new brush technology that allows professionals to enhance the natural character of wood and create inspirational new looks with ease.

With a century-long dedication and passion for wooden floors, Bona has developed an innovative system for creating exciting flooring effects as a part of the Bona Inspiration concept – a floor styling program with inspiration and guidance in flooring trends.

New Bona Brush Technology is a unique system that allows the contractor to renovate existing floors to create new, trendy effects, recreate the latest engineered floor trends, or simply restore the natural beauty of original floors. From texture and contrasts, to eye-catching two colour effects, when combined with Bona's wide range of oils and finishes, the design possibilities are endless.

Bona Brush Technology comprises of wire brush attachments that are compatible with Bona FlexiSand 1.9. The heads are mounted onto the Bona Power



Photos: © Bona AB, Sweden

Drive NEB through a simple click-lock mechanism, which is then attached to the Bona FlexiSand for fast, easy, direction-free sanding and brushing. The counter-rotating cylindrical wire heads brush down, removing the soft wood, which allows the coloured oil to settle between the grain.

For edges and hard-to-reach areas, Bona has introduced the new Bona SupraFlex all-in-one edge tool. Suitable for both brushing and sanding of wood and other substrates, Bona SupraFlex is the perfect companion to the Bona

Power Drive NEB.

"Bona Brush Technology offers the wood floor contractor the possibility to create a range of creative effects – such as those seen in engineered floor trends – without replacing the existing floor, or to simply restore its original beauty. When used with our expanding range of Bona oils and finishes, Bona Brush Technology offers endless design possibilities, that are safe, sustainable and easy to achieve," said Thomas Hallberg, Strategic Product Manager Professional, Bona AB, Sweden.



Photo: © Bona AB, Sweden



**8-11
NOV**

PHILCONSTRUCT 2018

Manila, Philippines
T: + 63 2 893-7973
F: +63 2 550-1148
E: info@globalinkmp.com
W: www.philconstructevents.com

**13-15
NOV**

MBAM OneBuild 2018

Kuala Lumpur Convention Centre
 Kuala Lumpur, Malaysia
T: +60 3 7987 1668
F: +60 3 7987 2668
E: info@oneinternational.com.my
W: www.oneinternational.com.my

**20-24
FEB**

Korea Build 2019

KINTEX
 Seoul, South Korea
T: +82 2 3397 0152
F: +82 2 3397 0067
E: koreabuild@e-sang.net
W: http://eng.koreabuild.co.kr

**6-9
MAR**

Xiamen Stone Fair 2019

Xiamen International
 Conference and Exhibition
 Center
 Xiamen, China
T: +86 592 5959 616
F: +86 592 5959 611
E: info@stonefair.org.cn
W: www.stonefair.org.cn

**13-17
MAR**

WORLDBEX 2019

World Trade Center & SMX
 Convention Center
 Manila, Philippines
T: +63 2 656 9239
F: +63 2 477 1899
E: info.worldbex@gmail.com
W: www.worldbex.com

**14-15
MAR**

Sydney Build 2019

Royal Hall of Industries &
 Hordern Pavilion
 Moore Park NSW 2021, Australia
T: +61 2 800 67557
E: marketing@sydneybuildexpo.com
W: www.sydneybuildexpo.com

**14-17
MAR**

Mega Build Indonesia 2019

Jakarta Convention Center
 Jakarta, Indonesia
T: +62 21 2556 5022
F: +62 21 2556 5040
E: megabuild@reedpanorama.com
W: www.megabuild.co.id

**27-28
MAR**

IoT Asia 2019

Singapore EXPO
 Singapore
T: +65 6403 2100
E: registration.iotasia@singex.com
W: www.internetofthingsasia.com

**19-21
MAR**

Ecobuild Southeast Asia 2019

Malaysia International Trade and
 Exhibition Centre (MITEC)
 Kuala Lumpur, Malaysia
T: +60 3 2176 8788
F: +60 3 2164 8786
E: ecobuild-sea@ubm.com
W: www.ecobuildsea.com

**9-12
JUNE**

**Guangzhou Electrical Building
 Technology 2019**

China Import and Export Fair Complex
 Guangzhou, China
T: +852 2238 9961
F: +852 2519 6079
E: building@china.messefrankfurt.com
W: www.building.messefrankfurt.com.cn

Singapore Green Building Council gives recognition to outstanding individuals and organisations at the forefront of green building movement

Singapore – On 6 September 2018, the recipients of the World Green Building Council (WorldGBC) Asia Pacific Leadership in Green Building Awards 2018 were honoured at the SGBC Gala Dinner held at The Orchard Hotel.

The event, which was attended by more than 650 professionals from the building and construction industry in Singapore and the region, gave recognition to 15 finalists and winners across the three main award categories this year. Local property developer City Developments Limited emerged as a Finalist in the Business Leadership in Sustainability Award category.

The SGBC also announced a number of initiatives at the Gala Dinner, as part of a major push to support the transformation of the green building sector. SGBC formulated these initiatives to translate into action the vision laid out by the Construction Industry Transformation Map (ITM) that was announced in October 2017. As green building is one of the three main transformation pillars of the built environment, SGBC is well poised to support the transformation of the sector for the future economy.

Guest of honour Dr. Amy Kor, Senior Minister of State for the Environment and Water Resources & Health, is positive

about SGBC's action plan to realise the Construction ITM's vision for the green building sector. "With the building sector accounting for 17 percent of our total greenhouse gas emissions, deepening green building expertise will help to mitigate our level of emissions. I am heartened that SGBC has demonstrated strong commitment to take the lead in climate action. Their close collaboration with the public and private sector to transform our built environment will bring us closer towards our vision of a sustainable Singapore."

Among the key initiatives announced by SGBC, the Green Professionals

Accreditation Scheme will succeed BCA's current register of Certified Green Mark Managers (GMM) and Certified Green Mark Professionals (GMP). A framework dedicated to the advancement of expertise and continuing professional development of the people behind Singapore's green building landscape will also be set in place. The Scheme will add to SGBC's suite of programmes to deliver greater value and offer stronger support to the developmental needs of the green collar workforce.

In addition, SGBC will develop a series of toolkits and resources as well as a self-assessment one-stop web portal to



Mr. Tan Swee Yiow, President of the Singapore Green Building Council, giving his welcome address. Photo: © SGBC



Guest of honour Dr. Amy Kor, Senior Minister of State for the Environment and Water Resources & Health, giving her keynote address. Photo: © SGBC



reach out to more workplaces and transform them into positive working environments.

Women in Green Building Leadership Award picks first-ever winner



(Left to right) Dr Amy Khor, Senior Minister of State, Ministry of Health & Ministry of the Environment and Water Resources; Mary Chan (Winner), DLN Architects Limited, Hong Kong; and Tan Swee Yiow, President of the Singapore Green Building Council. Photo: © SGBC

The Women In Green Building Leadership Award, a new category at the World Green Building Council's (WorldGBC) Asia Pacific Leadership in Green Building Awards 2018, honoured its first winner: Ms Mary Chan, Head of Sustainable Building Design and Assistant Director at DLN Architects Limited, Hong Kong.

Spearheaded by the WorldGBC's official partner, AkzoNobel, the leader in paints and coatings, the Award recognises Ms Chan's integral role in the early development of green buildings in Hong Kong, and her involvement in industry initiatives like the Green Shop Alliance, which comprises of 23 developers and 132 shopping malls to date.

Nominations were judged by a prestigious panel of industry experts including Mr Curt Garrigan, Chief, Sustainable Urban Development Section, Environment and Development Division, UNESCAP, Mr Milag San Jose- Ballesteros, Regional Director

for Southeast Asia and Oceania C40 Cities, and Mr Luca de Giovanetti, Science-based Targets, World Business Council for Sustainable Development.

Among her achievements, Ms Chan was instrumental in the early development of green buildings in Hong Kong, spearheading public education and engagement for the next generation. She also initiated the Green Shop Alliance, a key program by the Hong Kong Green Building Council that seeks to promote greener practices amongst shopping mall operators and tenants. The success of the initiative ultimately resulted in the adoption of the Alliance by the Hong Kong government to promote environmental policies.

Mr Jeremy Rowe, Managing Director at AkzoNobel Decorative Paints, South East & South Asia, Middle East commented: "Women today have made great contributions to the green building agenda. While only representing 10 percent of the construction industry, according to the World Economic Forum in 2016, nearly 50 percent of established Green Building Councils are led by women. Through this new award, AkzoNobel wants to give further recognition to inspiring women who demonstrate outstanding commitment towards nurturing and activating their communities, as well as delivering change in a traditionally male-dominated industry."

The other two nominees of the Women in Green Building Leadership award were Ms Shakuntala Ghosh, Architect and Partner of Ghosh Bose and Associates in India, and Ms Maria Cristina Samson, Co-President of The Net Group in the Philippines.

Commenting on the success of the Award, Ms Joelle Chen, Regional Head of WorldGBC's Asia Pacific Network, enthused: "Today, our Green Building Councils in the Asia Pacific Regional Network work with 5,000 of the most pioneering companies and innovators on green building. Through initiatives like the Women In Green Building Leadership Award, we continue to grow our network and encourage industry adoption of sustainable practices. On behalf of the WorldGBC, I congratulate Ms Mary Chan and thank organisations like AkzoNobel for their valued contributions to raising the profile of green buildings in the region."



More than 650 professionals from the building and construction industry in Singapore and the region attended the SGBC Gala Dinner. Photo: © SGBC

Philippine building and construction industry welcomes World Green Building Week 2018 during its Building Green 2018 Conference

Manila, Philippines – Organised by the Philippine Green Building Council, the largest green building movement in the Philippines, the country's building and construction industry welcomed the opening of the World Green Building Week 2018 with its annual conference, Building Green 2018, on 21 September 2018 at the SMX Convention Center, Pasay City, Philippines.

The Building Green conference is the council's annual event for nationwide awareness campaign on green building. The theme for this year's Building Green conference (BG2018) is Global Collaborations for a Greener and Sustainable Built Environment.

During Building Green 2018, the industry confidently benchmarked on building better together – synergistically advancing with greater industry collaborations and global cooperation for sustainable and greener built environments. The conference featured three (3) key sessions – Government Green Programs and Initiatives, Local and International Cooperation for Energy Efficiency and Green Buildings, and Green Homes which showcased greening efforts in housing from the government and private sector, as well as products and technologies that promote green homes.

In his opening remarks, PHILGBC Chair Ramon Rufino

emphasised that greening starts at home.

"We really want people to realise that even in our homes, we can start to see the benefits and the value of sustainability and going green. Each one of us doesn't have to look very far. Even within our own immediate homes and communities, we can really try to do a lot to push sustainability," said Mr. Rufino.

Speaking in behalf of Hon. Sec. Emmanuel De Guzman of the Climate Change Commission, Ms. Montserrat Romulo reiterated the partnership between the government and private sector in ensuring a sustainable future.

"It is our collective responsibility to future generations to ensure that the buildings within which they live and dream are built in harmony with the Earth," said Ms. Romulo.

Welcoming World Green Building Week

Featured at BG2018 are greening projects and efforts from both the public and private sector in line with the global celebration of World Green Building Week which emphasises on building on actions for greener built environments starting with our homes.

From the private sector, Arthaland Corporation presented on the case of their residential green building development – Arya Residences – which has achieved a Gold rating under



Group photo with some of the Building Green 2018 Conference participants. Photo: © Philippine Green Building Council



Ms. Montserrat T. Romulo, Consultant – Philippine Climate Change Commission, speaking in behalf of Hon. Sec. Emmanuel De Guzman, Secretary and Vice Chairperson of the Climate Change Commission. Photo: © Philippine Green Building Council

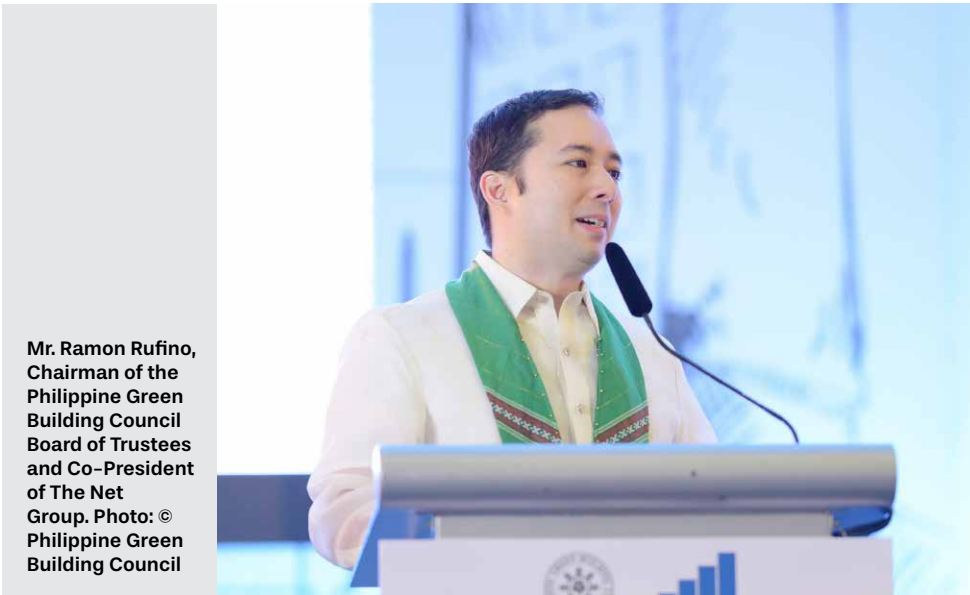
LEED and a BERDE 4-Star certification from the Philippine Green Building Council.

On the side of the public sector, the National Housing Authority (NHA), through Ar. Benita Regala, shared on the actions taken by the for socialized housing. She presented the different directives and programs of the NHA utilizing their Green Guide for Socialized Housing.

Complementing the session on green homes, presentations on construction best practice as well as products relevant to efficient energy consumption and green buildings as smart grid, efficient cooling, and wood-replacement building material was shared during the session.

As BG2018 came to close, the participants were enjoined to participate in activities and initiatives happening during World Green Building Week. As part of the celebration of World Green Building Week for the Philippines, the PHILGBC assisted the Department of Energy as it hosted the Forum on Energy Efficiency on 26 & 27 September 2018. Participants were also encouraged to support the campaign in social media on #HomeGreenHome and were asked to share on their commitments on actions to green their built environments, starting with their own homes.

Ms. Audrey Belle Po, Chair of the PHILGBC National Convention Committee, in her closing message said, "As we close today's Building Green 2018 conference, we recognize the role each of us play in this global economy. And as we endeavor to build better communities for people and the environment, we recognize the need for continued collaborations between various players from both government and the private sector, both locally and in the international arena. Building Green is not just the responsibility of government nor is it just for the private sector to push for. Cooperation and Collaborations are important to drive greener environments and greener communities. Our concerted efforts will bring about a global greener economy for everyone."



Mr. Ramon Rufino, Chairman of the Philippine Green Building Council Board of Trustees and Co-President of The Net Group. Photo: © Philippine Green Building Council



Ms. Audrey Belle Po, National Convention Chairperson and Member of the Philippine Green Building Council Board of Trustees. Photo: © Philippine Green Building Council



Consolidating amongst history and art



The MAPEWOOD system was used for the wooden roof beams and trusses and the MAPEWRAP system was applied to strengthen the structure.

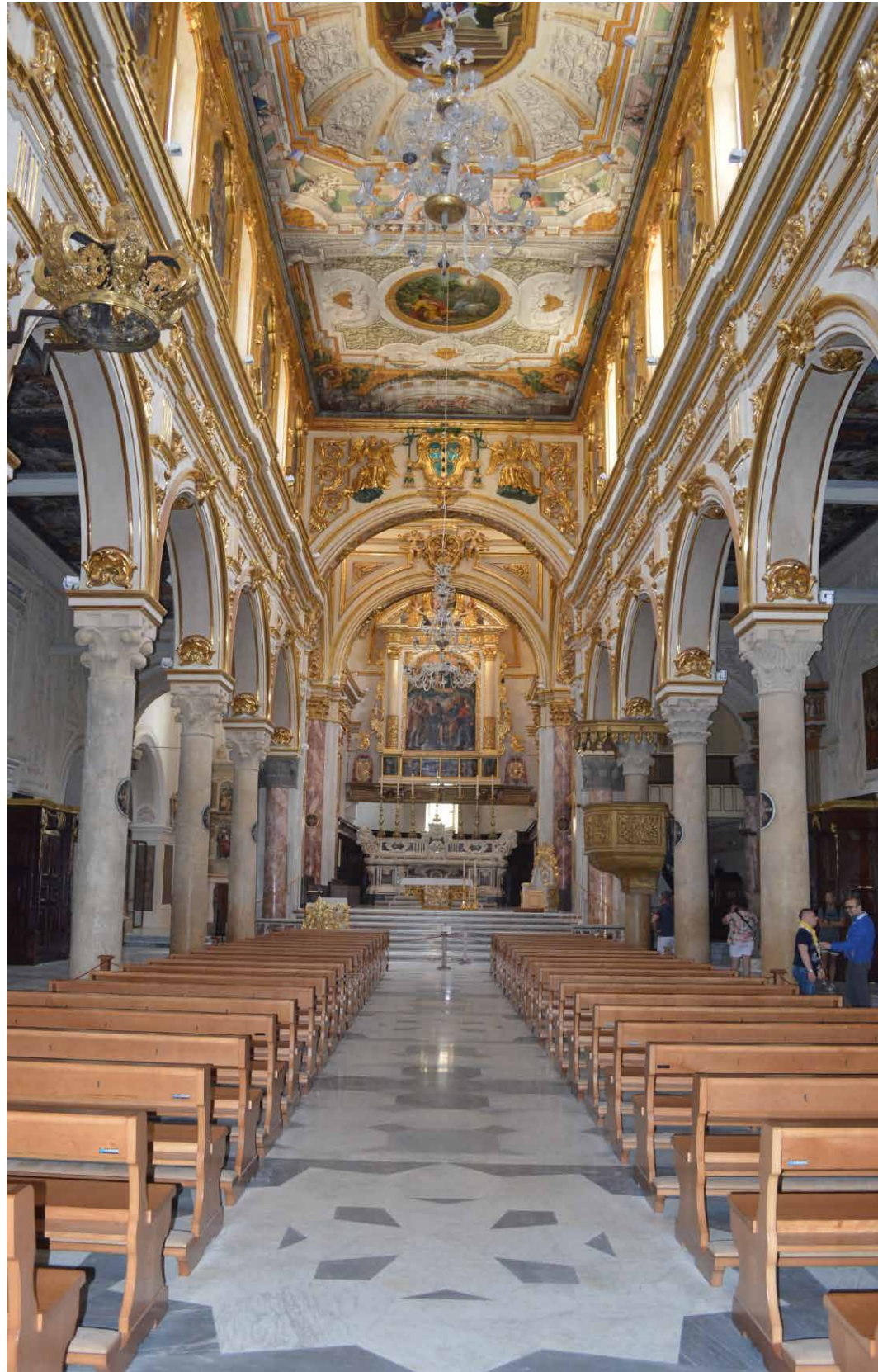
Dedicated to the patron saints of Matera, the cathedral has been the object of delicate consolidation and structural strengthening work. Mapei was pleased to be part of the project.

Built in Apulian-Romanesque style, Matera cathedral is dedicated to the Madonna dell Bruna and St. Eustachio and sits on the highest spur of the city, which splits the Sassi cave dwellings into two halves. Completed in 1270, the church was built by raising its rocky foundations by more than six metres so that it would overlook the surrounding territory. The facade of the cathedral is dominated by a rose window and a main entrance door with a round arch.

Upon entering the cathedral, visitors immediately notice the contrast with the style of its exterior: all that remains of the original interior of the church are a few frescoes and the capitals of the columns; stuccoes and gold leaf decor were added in the 17th century, while the trussed ceiling was covered in 1719 with a wooden suspended ceiling. The layout of the church is a typical Latin cross style with three aisles and is 54 metres long, 23 metres high and 18 metres wide.

Working in a historical setting

A series of interventions inside the cathedral was launched in 2014 to consolidate and strengthen its structure and to renovate its decorative features. Mapei Technical Services was contacted and, for the static consolidation and structural strengthening work on the dome over the presbytery and the smaller timber vaults, they advised using a combination of the latest generation of inorganic matrix composites from the FRG SYSTEM and polymer matrix, fibre-reinforced composites from the FRP SYSTEM.



Slabs of marble were installed in the interiors with GRANIRAPID.



TOPCEM PRONTO was used to build heated screeds.



Repairing the beams with **MAPEWOOD PASTE 140**.

Consolidation of the wooden beams and trusses

The first phase of the work consisted in consolidating the surfaces of the wooden trusses over the lateral and central naves. Once the wooden structural elements had been catalogued, numbered and dismantled, they were treated to protect them from woodworm and dry rot and then primed with two coats of MAPEWOOD PRIMER 100 fluid epoxy impregnator. A layer of MAPEWOOD PASTE 140 epoxy adhesive pigmented in the colour specified by the Works Director was then applied. This phase was completed by bonding wooden slats to some of the areas treated with MAPEWOOD PASTE 140 thixotropic adhesive which, while still wet, had been broadcast with QUARTZ 0.5 quartz sand.

The second intervention involved consolidation of the wooden beams and trusses over the central nave by fastening two CARBOPLATE E170/50 plates near to the intrados of the chain with MAPEWOOD PRIMER 100, MAPEWOOD PASTE 140 and MAPEWOOD GEL 120. Metal inserts were added to the arches in the presbytery using 5 mm titanium threaded rods, which were fastened into the arches by drilling a series of holes and anchoring them with MAPEFIX

EP 470 SEISMIC pure epoxy resin-based chemical anchor.

Intervention on the dome over the presbytery

To strengthen the extrados of the dome, the Mapei FRP system was proposed, which involves the use of MAPEWRAP G UNI-AX 300/30 unidirectional, high strength, glass fibre fabric, applied with a line of epoxy resins such as MAPEWRAP PRIMER 1, MAPEWRAP 11, and MAPEWRAP 31.

This strengthening system was applied on the properly prepared substrate with PLANITOP HDM RESTAURO. The system was linked to the perimeter walls with MAPEWRAP G FIOCCO glass fibre cord, anchored with MAPEFIX VESF resin-based chemical anchor.

Consolidation of the vaulted roofs

When consolidating the three limestone vaults unearthed during the archaeological digs MAPE-ANTIQUE ALLETTAMENTO was used for sealing the joints between the bricks. After the application of PRIMER 3296, a cap was made with PLANITOP HDM RESTAURO fibre-reinforced mortar and MAPEGRID G 220 glass fibre mesh.

For the new structural renders in the transepts and in the Sacramento and

Annunziata chapels, it was recommended to use MAPE-ANTIQUE STRUTTURALE special mortar with MAPEGRID G 220 glass fibre mesh embedded in the mortar.

Interventions on the interior

Wall plasters were restored by starting with a thorough mechanical cleaning. They were then consolidated with a series of micro-injections of a cement-free, lime-based hydraulic binder (MAPE-ANTIQUE I-15), filling the surface cracks, and then applying a coat of lime-based paint.

Dehumidifying renders were created using salt-resistant lime-based, cement-free products with MAPE-ANTIQUE RINZAFFO (applied in a 5 mm thick layer) and MAPE-ANTIQUE MC (in a 20 mm thick layer). MAPE-ANTIQUE LC, MAPE-ANTIQUE FC GROSSO and MAPE-ANTIQUE FC ULTRAFINE were also applied thereupon.

As for the interior floors, an aerated flooring system was also created to counteract rising damp from the substrate. This structure was made up of modular formworks and a screed made from TOPCEM PRONTO, a product which is ideal to build heated screeds thanks to its high thermal conductivity ($\lambda = 2 \text{ W/mK}$). The slabs of marble were installed on the



Static structural strengthening work on the dome over the presbytery using the MAPEWRAP system.



The flooring, made up of slabs of Carrara marble and Bardiglio inserts, was installed using ELASTORAPID two-component cementitious adhesive.

screed using GRANIRAPID adhesive in its white shade. The joints were then sealed with MAPESIL LM sealant.

The Carrara marble and Bardiglio grey inserts were installed using ELASTORAPID adhesive in its white shade.

Mapei Products

Repairing wooden elements: Carboplate E170/50, Mapewood Primer 100, Mapewood Paste 140, Mapewood Gel 120, Quartz 0.5

Structural strengthening: Mape-Antique Allettamento, Planitop HDM Restauro, MapeGrid G 220, Primer 3296

Static strengthening: Mapefix EP 470 Seismic, MapeWrap 11, MapeWrap Primer 1, MapeWrap 31, MapeWrap G UNI-AX, MapeWrap G Fiocco, MapeWrap S Fiocco

Building screeds: Topcem Pronto

Installing marble: Granirapid, Elastorapid

Sealing expansion joints: Mapesil LM

Renovating internal walls: Mape-Antique Rinzafo, Mape-Antique MC, Mape-Antique LC, Mape-Antique FC Grosso, Mape-Antique FC Ultrafine

PROJECT DATA

Project: Madonna della Bruna and Saint Eustachio Church

Location: Matera, Italy

Period of Construction: 1226-1270

Period of the intervention: 2014-2016

Intervention by Mapei: supplying products for structural strengthening, consolidating the wooden beams, building screeds, renovating masonry, and installing marble slabs

Client: Matera and Irsina Archdiocese

Project Manager: Laura Montemuro

Architectural Design: Renato D'Onofrio, Leonardo Nardis, Francesca Contuzzi

Structural Design: Andrea Giannantoni

Works Direction: Renato D'Onofrio, Antonello Pagliuca, Francesca Contuzzi

Scientific Consultant: Paolo Rocchi

Supervision: Francesco Canestrini, Antonio Persia, and Renato Di Marzio (Basilicata Region Department for Archeology, Fine Arts and Environment)

Main Contractor: D'Alessandro Restauri Srl

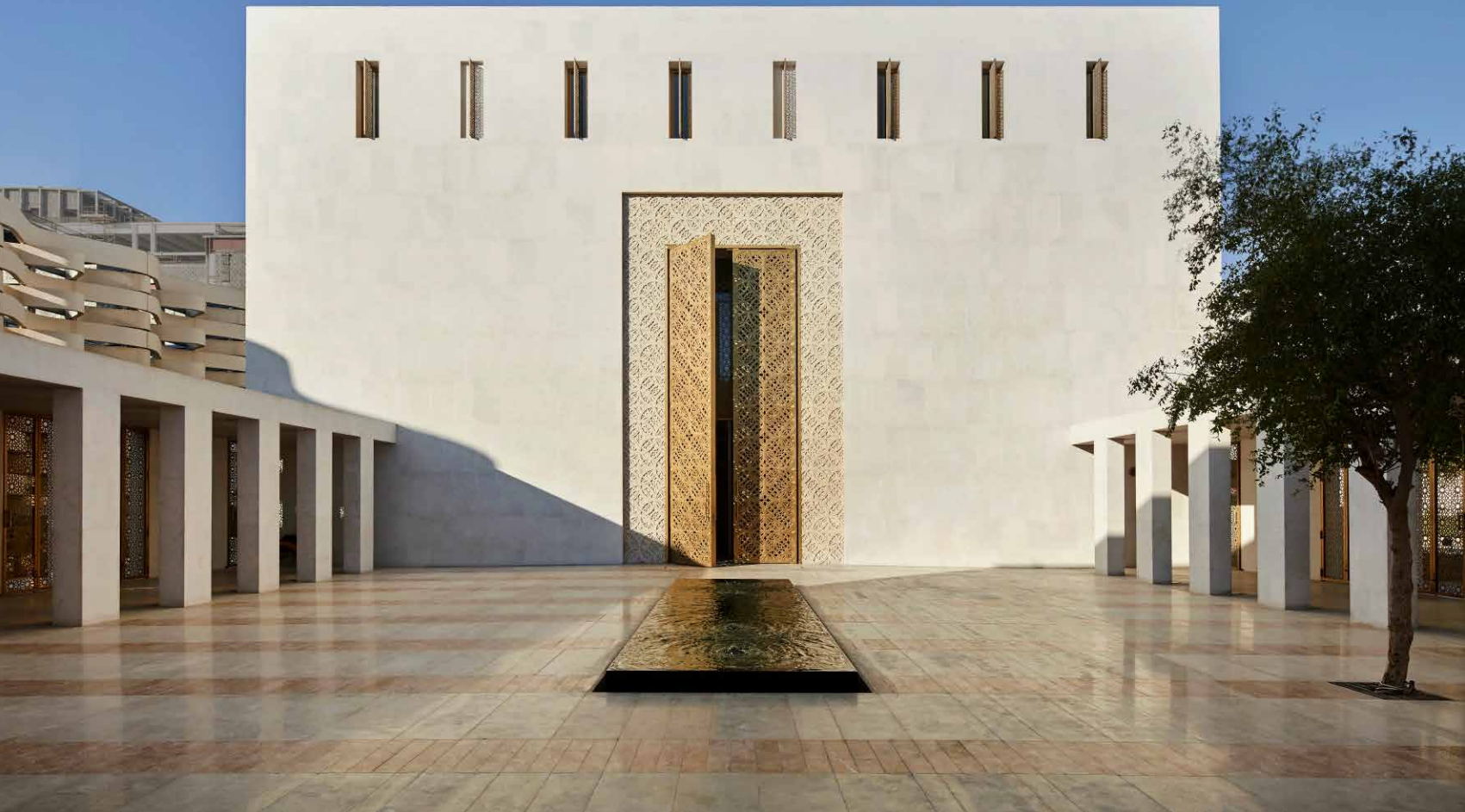
Mapei Distributors: Edil Loperfido Srl, Edil Sud Srl

Mapei Coordinators: Michele Mirco Malvasi, Francesco Dragone, Achille Carcagnì, Gianmario Disposto, Davide Bandera, Mapei SpA (Italy)

Photos: © Mapei

Article source: *Realtà Mapei International* no. 67/2018

For more information, email mapei@mapei.com.sg.



Main entrance to prayer hall from courtyard.

Msheireb Mosque

The design of the Msheireb Mosque in Doha reflects the key principles of Islamic art and architecture.

The new Msheireb Mosque is located within the Msheireb Heritage Quarter. The area has always been the anchor of religious and political power for the local population. The design fuses Modernism with a historical arrangement of volumes and spaces, using specifically Qatari materials and architectural details.

The Heritage Quarter's redevelopment retains a strong and fundamentally Qatari character, yet is also internationalist in outlook. "Displaying an innovative architectural language – a modern interpretation of materiality and order – the Msheireb Mosque creates a subtle engagement with Doha's character and future aspirations," said John McAslan, Executive Chairman, John McAslan + Partners.

Design approach

The form of the building is based on traditional Qatari mosques, which have for centuries used orientation, shading, natural ventilation and water to create environments for prayer. The design reflects the key principles of Islamic art and architecture



Exterior view of mosque looking west.



“Our design for the Msheireb Mosque reflects Doha’s increasing international presence, and the emphasis on faith, communication and outreach that characterises the city’s ambitious educational, cultural and commercial initiatives.”

– **John McAslan**, Executive Chairman,
John McAslan + Partners

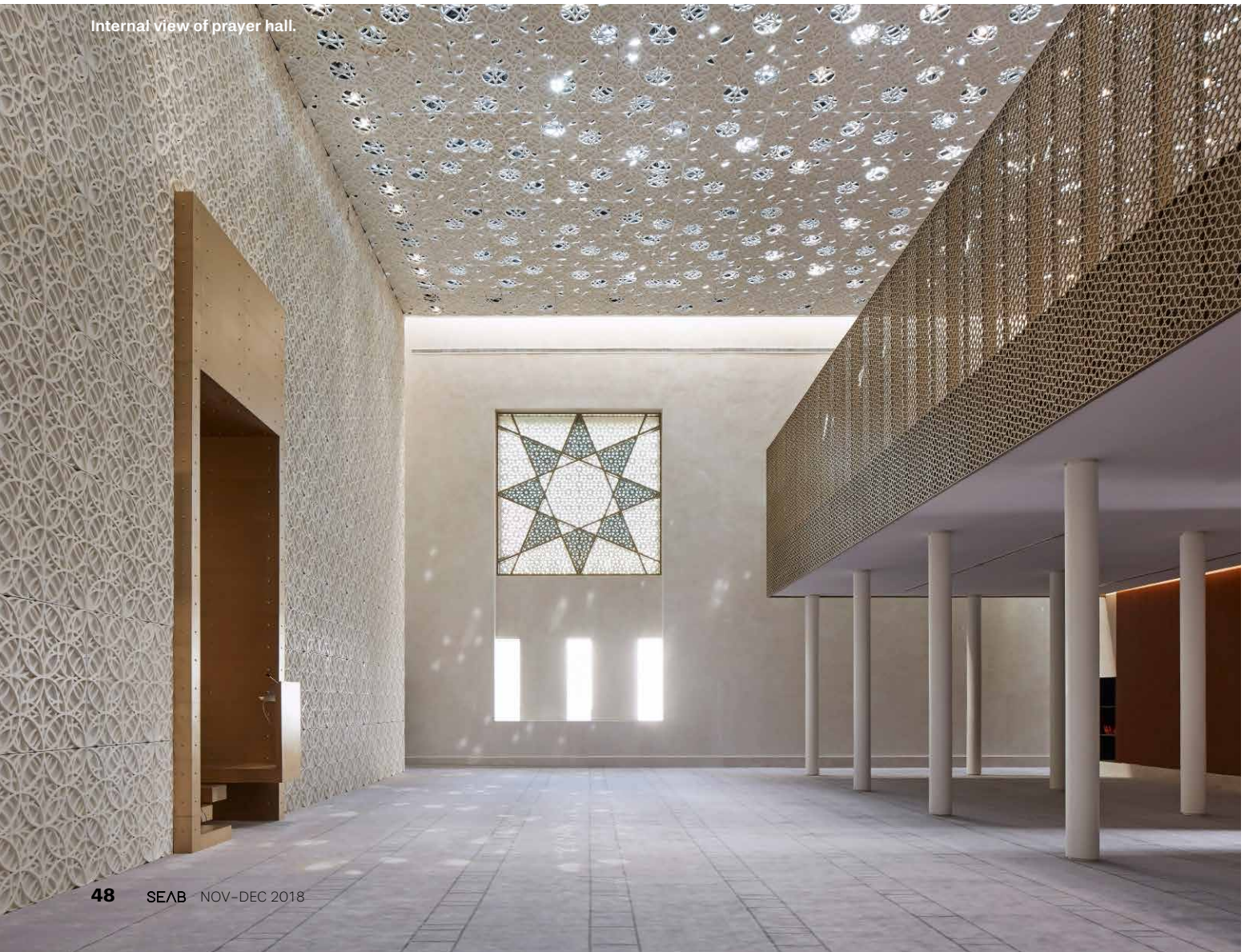


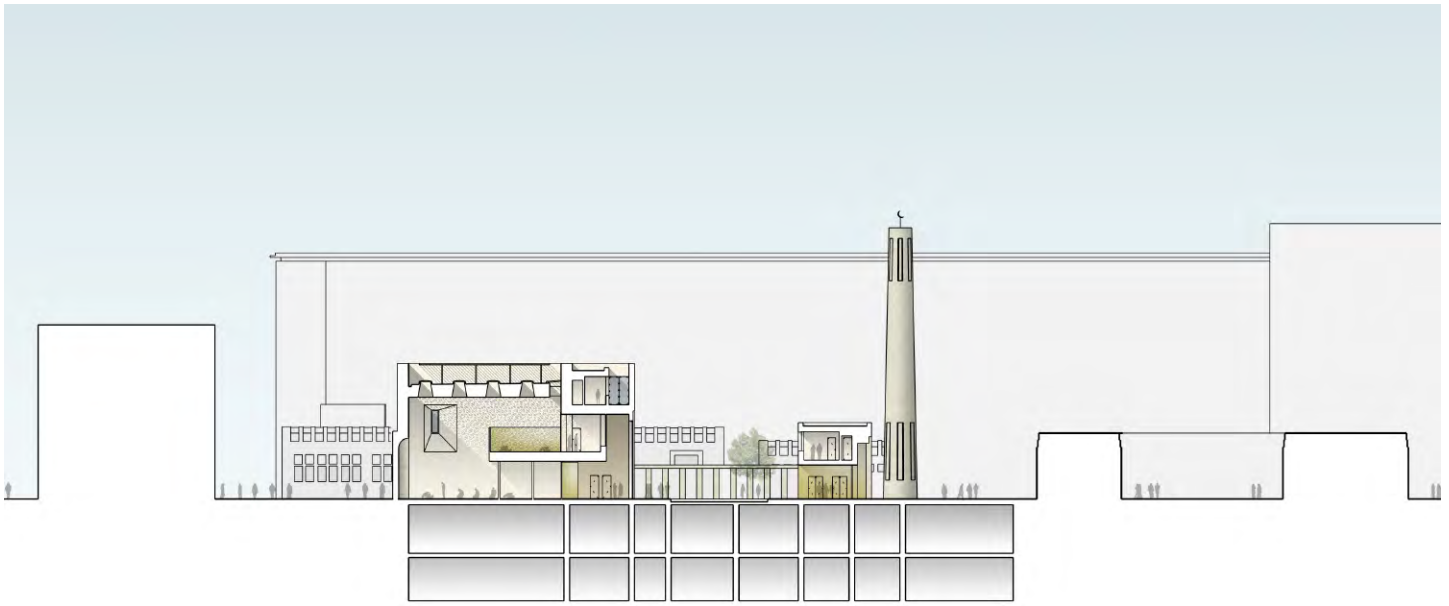
– simplicity, functionality, spirituality, light, pattern, geometry and water. The plan form, based on a double square, follows classical Islamic precedent, as does the use of geometric patterns and designs, creating an elegant space with perfect proportions, with pierced roof screens creating patterns of dappled light and shade.

Materials and methods of construction

The perfect cube building is constructed of crisp white stone. Metal Islamic patterned gates enclose the entrance pavilion and courtyard. Within the prayer hall a perforated, patterned roof allows dappled natural light to illuminate the prayer hall, providing a contemplative space for prayer. A colonnade of

Internal view of prayer hall.





Long section of the mosque.

stone wraps the courtyard on both sides, framing a perfect courtyard square. A pond and rhyll create a sense of calm and contemplation before the entrance to the Prayer Hall.

Sustainable design

The mosque has been constructed using an in situ concrete frame with blockwork infill. Regional limestone is used as cladding and Qatari stone used as accent banding to the courtyard floor. Screens are cast bronze to create richness and depth. The Mosque has been designed to 'LEED' gold standard and utilises passive and active sustainable techniques including photovoltaics and solar hot water heaters. The prayer hall is designed so that no artificial lighting is needed during daylight hours.

The form and configuration of the building is based on that of traditional Qatari mosques, which have for centuries used orientation, shading, natural ventilation and water to create comfortable environments for prayer.

The stone minaret is circular in section and tapers towards the top, requiring each course of stones to be cut differently to achieve the overall form due to its reducing radius.

PROJECT DATA

Project Name: Msheireb Mosque
Location: Doha, Qatar
Client: Msheireb Properties
Architect Firm: John McAslan + Partners
Type: Mosque
Gross Floor Area: 1,400 square metres
Completion: 2016
Photos: © Hufton + Crow
Drawing: © John McAslan + Partners



View of mirhab in prayer hall.

Waterside Buddhist Shrine



The Waterside Buddhist Shrine in Tangshan is designed to give humans an opportunity to co-exist with nature.

This is a place for Buddhist mediation, thinking and contemplation as well as a place satisfying the needs of daily life. The building is located in the forest by the riverside. Along the river, here is a mound, behind which is a great stretch of open field and sporadic vegetable greenhouses. The design started from the connection between the building and nature, adopts the method of earthing to hide the building under the earth mound while presenting the divine temperament of nature with flowing interior space. A place with power of perception where trees, water, Buddha and human coexist is thus created.

To remain trees along the river perfectly intact, the building plan avoids all trunks. Shape of the plan looks like branches extending under the existing forest. Five separated and continuous spaces are created within the building by two axis, among which one is north-south going and another one goes along the river. The five "branches" represent five spaces of different functions: entrance, Buddhist meditation room, tea room, living room and bathroom, which form a strolling-style experience together. The building remains close to trees and natural scenery. The entrance faces two trees; people need to walk into the building through a narrow path under the trees. The shrine is against the wall and facing the water, where the light and the shadow of the trees get through the skylight and flow into the interior space softly along the curved wall, exaggerating the light of Buddha. The tea room opens completely to the pool which is filled with lotus, and trees on both sides of the tea room has become part of the courtyard, creating a fun of tea tasting and sight-viewing. The lounge is separated from other parts of the building by a bamboo courtyard; such division enables daily life varies with different hours of a day.



Rooftop at night.

The whole building is covered with earth and becomes an extension of the land, as another "mound" which could be used under the trees.

The relationship with nature further extends to the use of materials. Integral concreting is used in walls and the roof of the building. The concrete formwork is pieced together with pine strips of 3 cm width, in this way natural wood grain and vertical linear texture are impressed on the interior surface, creating a soft and warm feeling to the cold concrete materials. Built-in-furniture is custom-made with wood strips, whose grey wood grain is a little bit different from the concrete walls. Smooth terrazzo is used for the interior floor, where there is thin grain of stone on the surface, and



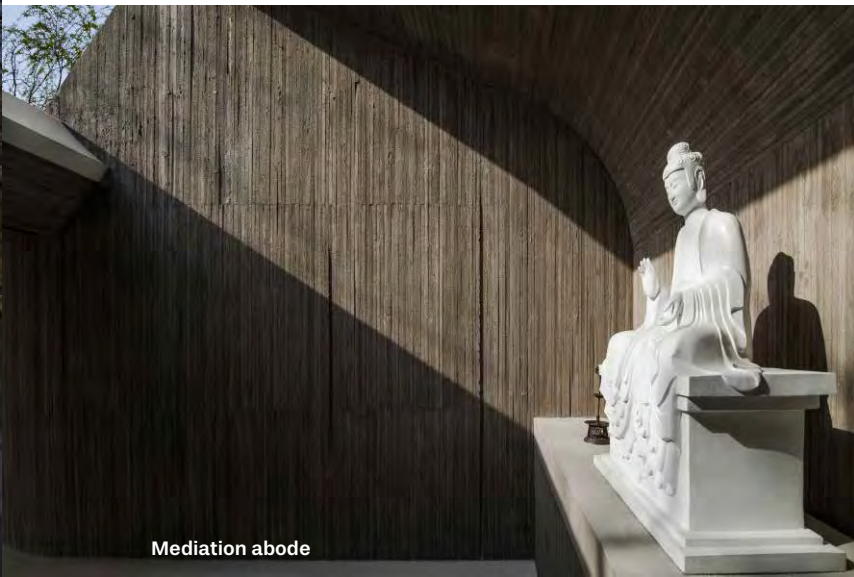
Main entrance



Interior view



Interior view



Mediation abode



Courtyard interior

it maps the outdoor natural landscape into the interior space. Cement grouting with white pebbles is adopted in outdoor flooring, which creates a difference in sense of touch between indoor and outdoor floor. To reflect natural texture of the materials, solid wood is used for all doors and windows. Zen stresses on complying with nature and being part of nature. That is also the goal of the design for this space – taking use of space, structure and material to stimulate human perception, thus helping man and building to find the charm of nature even in an ordinary rural landscape, and to coexist with nature.

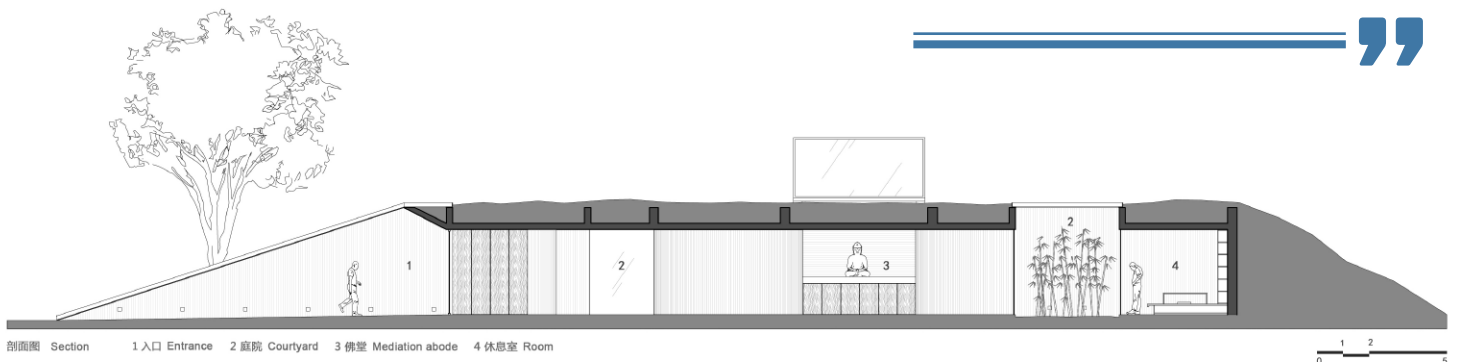
PROJECT DATA

Project Name: Waterside Buddhist Shrine
Location: Tangshan, Hebei, China
Architect Firm: ARCHSTUDIO
Type: Buddhist temple
Land Area: About 500 square metres
Building Area: 169 square metres
Completion: 2017
Author: Han Wen-Qiang
Photographer: Wang Ning and Jin Weiqi



“The inspiration came from the grottoes for ancient Buddhists’ practice. The design was mainly influenced by the natural trees in the site, and now it is an earthing architecture interspersed with trees.”

– Han Wen-Qiang, Founder and Principal Architect of ARCHSTUDIO



Cross section

Catholic Suzuka Church

The Catholic Suzuka Church has a chapel, a community hall and residences for priests under one roof.

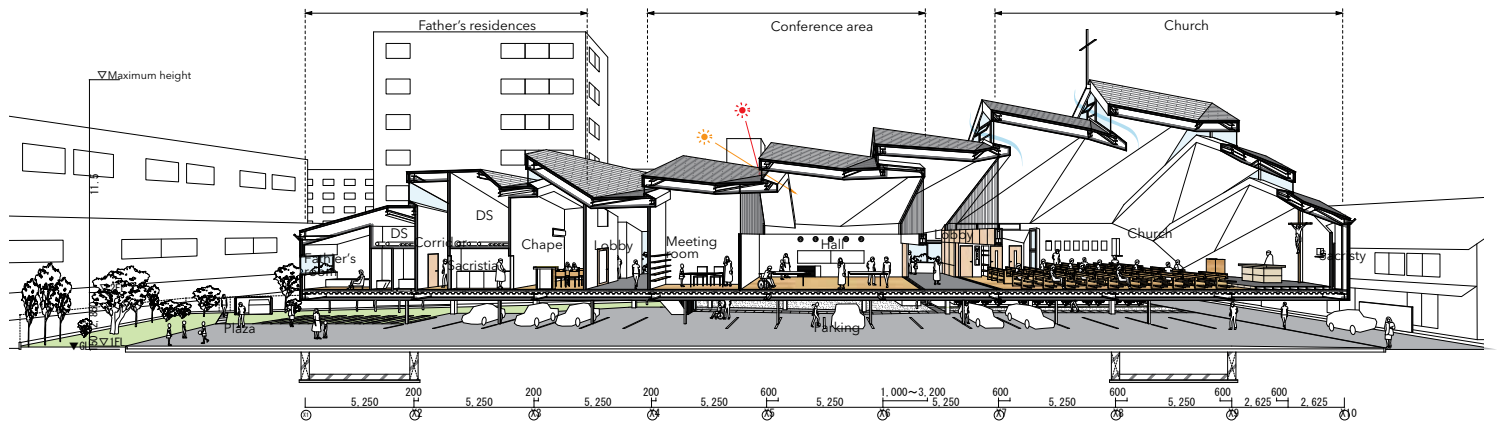
Responding to a dramatic growth in the foreign Catholic community in Suzuka, a new religious space is needed not only for worships but also social interactions. The Catholic Suzuka Church, presented by the Alphaville Architects, is an integration of multiple functions including a chapel, a community hall and residences for priests. Located in Suzuka, where the HONDA motor industry bases, the presented project is sitting on the cross junction of two major streets, with one being a newly built motorway and the remaining one being an ancient road connecting Tokyo and Osaka since Edo period.

The project features an expressive roof which wraps up all the functional spaces. It is shaped as multiple diagonal arches overlapping each other with gaps. This was inspired by the stunning mountain scape surrounding the city, and reminds citizens of the natural elegance.

To handle crowds on Sundays, the whole volume is lifted to maximise the car parking space underneath without shrinking the other functional areas. The roof is split into pieces every five metres – referring to the parking lot module – for skylights to introduce the southern natural light to the interiors. Connected by two gently inclined staircases, the pilotis and the entrance lobbies on the second floor define a plaza for social events and buffering from the heavily motorised city.







Sectional perspective 1/200





Referring to the "Nori's figure/ground theory", the lobby is designed as an extension of the city pathways, manipulating relationships among the "inside-out" spaces converging at the church that allow easy approaches.

With its lively gesture, this project surpasses precedents with enhanced accessibility, translating worships into daily-life philosophy and bridges mankind to the holy with falls of natural light.



Asako Yamamoto (left) and Kentaro Takeguchi, founders of ALPHAVILLE architects

PROJECT DATA

Project Name: Catholic Suzuka Church
Location: Suzuka, Japan
Client: Catholic Kyoto Diocese
Architect Firm: ALPHAVILLE architects - Kentaro Takeguchi + Asako Yamamoto
Type: Church
Total Floor Area: 1588.85 square metres
Completion: July 2015
Photographer: Toshiyuki Yano, Dymwakai Co., Ltd.



This church is based on the idea that the architecture is becoming the window itself. Like the architecture with deep window of the Romanesque church, the side surface of the window is one of the most important light space of the architecture.

— Kentaro Takeguchi, Founder of ALPHAVILLE architects





West Elevation of the Seashore Chapel.



Northwest View

Seashore Chapel

Located in Beidaihe New District in China, Vector Architects imagined the Seashore Chapel as an old boat drifting on the ocean long time ago. The ocean receded through time and left an empty structure behind, which is still lying on the beach.

The space is thus divided vertically. The covered outdoor space naturally becomes a resting place for people on the beach. It is also a space connecting religious space to the mundane life. When the tide rises, this space will be submerged by water. At that moment, the imagery of the drifting boat emerges out of the chapel.

The atmosphere on upper floor is intensely divine and religious. The spatial experience begins on the 30 metres path leading to the chapel. When people gradually approach, the cue emerges indicating the suspending space on the other side through the 600mm wide gap in the middle of the grand staircases. With a glimpse of ocean in distance, they walk up the stairs, go through the gate, and make a turn around the screen wall into the space with unblocking ocean view. The relationship between space and the ocean is closer due to the elevated position. The view is isolated from the beach and people, leaving the outstretched ocean the only view in sight.

There are limited openings on the chapel. The only large horizontal ocean-view window is on the east facade. Its 2.7 metres height helps to avoid the interruption of excessive light to the interior, and also frames the view to the ocean. A few narrow gaps in between the walls also bring in natural lighting. Lighting is carefully controlled with the 10-metre tall interior space misting diffused light. On the east facade, a triangle opening gently illuminates the cross from both bottom and up. There is another light channel on top of the pitched roof allows the natural light streaming into the space which is a 300mm gap between the bended wall on north and the pitched roof.



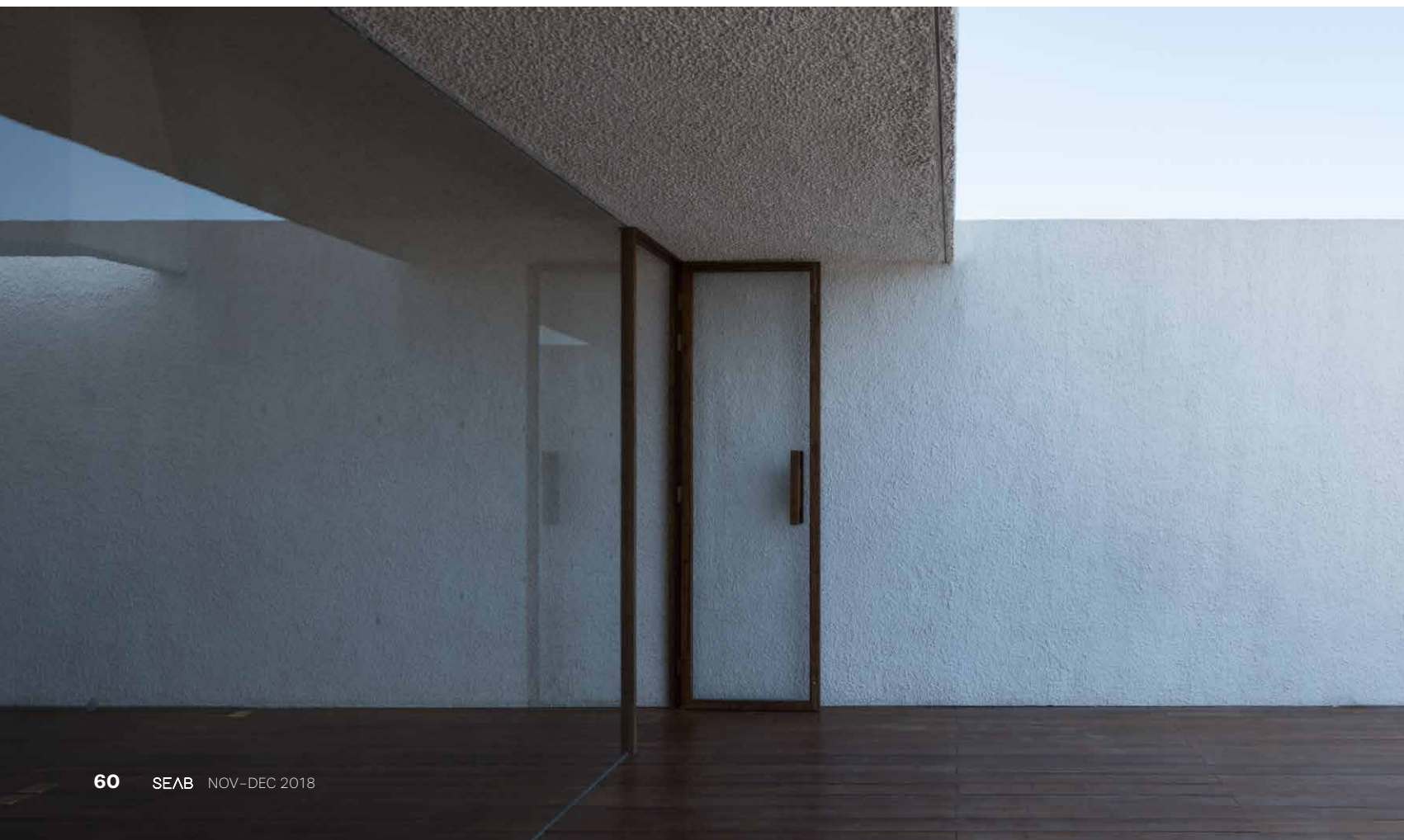
Ocean-Viewing Platform

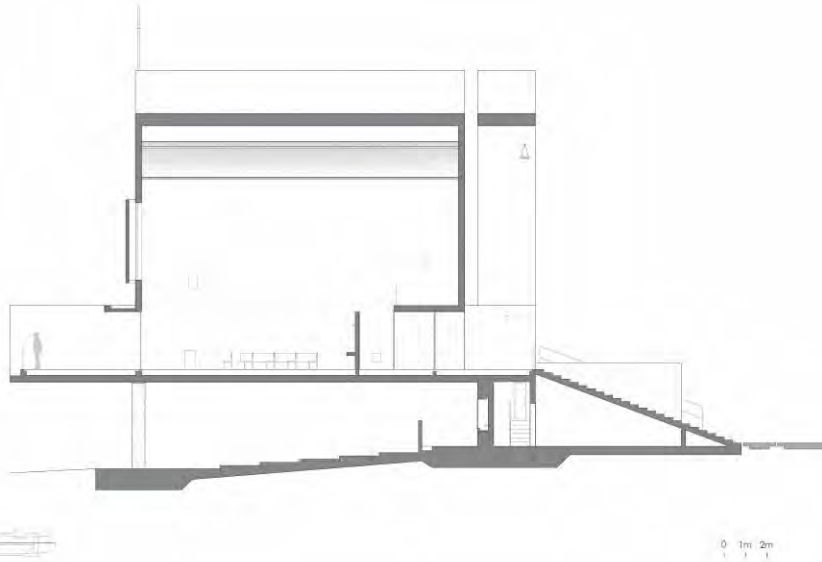
At the noon of spring, summer and fall, when the solar altitude is almost perpendicular, the light projects directly onto the wall on north, generating vivid lighting effect. Although the lights does not stay for long, the texture of the stucco wall is emphasised and celebrated by the light at the moment, and becomes a touchable skin. On the north side, there is a cantilevered space of meditation. The space can merely fit in one person where the walls wrap your body tightly, and one curvy wall extends the sight towards the distant ocean.

The design of this chapel considers natural ventilation

comprehensively. In order to maintain the uniform and continuous exterior appearance, all the windows are hidden in the gaps between the main envelope and several pieces of paralleled sliding-out walls.

Seashore Chapel serves the resort community on its west side. It is the artificial space that is the closest to the ocean in the community. Apart from religious programmes, many public and community events are planned in Seashore Chapel. Together with Seashore Library, they provide spiritual spaces at ocean front, where people can slow down their pace, experience the nature and examine their inner state.

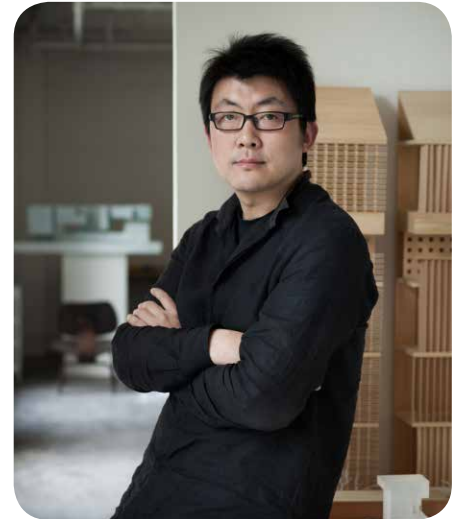




Cross Section

PROJECT DATA

Project Name: Seashore Chapel
 Location: Beidaihe New District, China
 Client: Beijing Rocfly Investment (Group) CO., LTD
 Architect Firm: Vector Architects
 Building Area: 270 square metres
 Design Period: 08/2014-11/2014
 Construction Period: 11/2014-10/2015
 Photo Copyright: Vector Architects
 Photo Photographer: Chen Hao

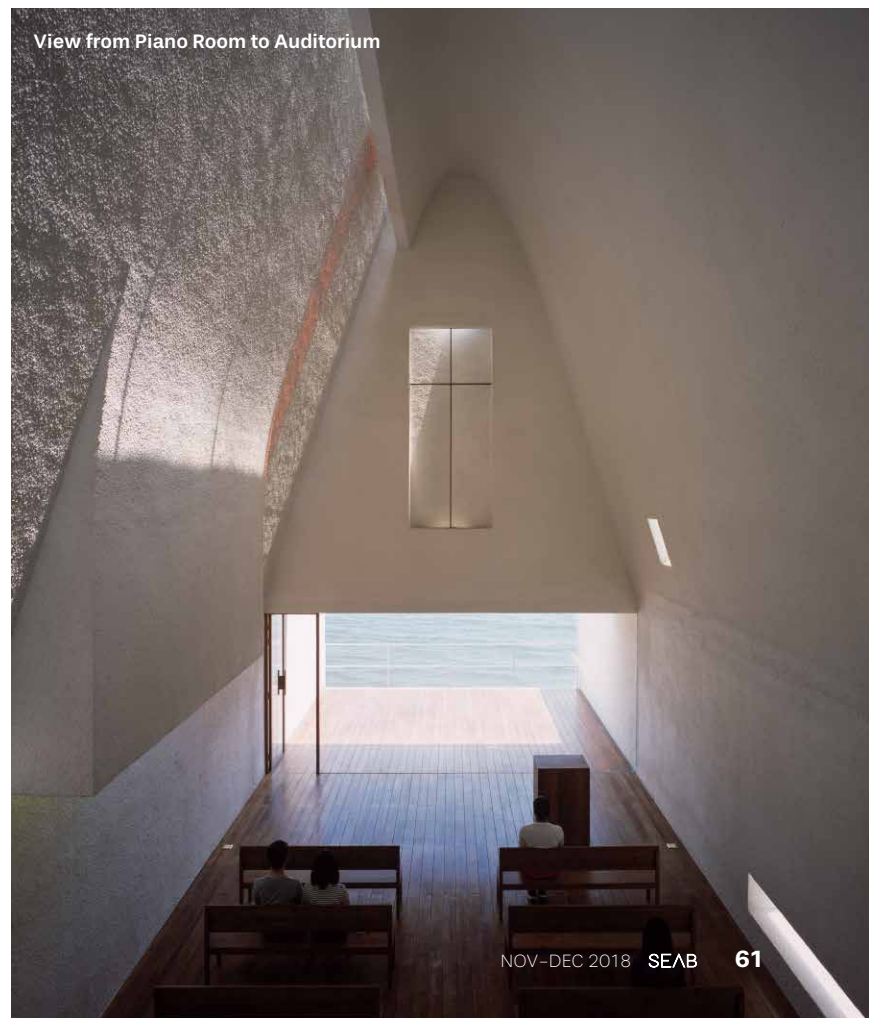


Architecture is neither the beginning nor the end. Instead, it is a medium, a medium to connect and reveal.

– Gong Dong, Founder & Design Principal of Vector Architects



Balcony



View from Piano Room to Auditorium



Wat Ananda Metyarama Thai Buddhist Temple

Located at 50B Jalan Bukit Merah, the Wat Ananda Metyarama Thai Buddhist Temple expanded its current facilities by adding a new block to its existing historic Main Shrine.

Wat Ananda Metyarama Thai Buddhist Temple is the oldest and only Thai Buddhist Temple in Singapore that receives royal patronage from the Thai Royal Family. With its long monastic tradition of ordaining monks, the temple celebrated its 90th anniversary since its inauguration by expanding its current facilities by adding a new block next to its existing historic Main Shrine. The new commemorative structure has replaced the current three-storey Monks Quarters and doubled its current 600 square metres built in floor area. The program for the extension block not only called for more monks quarters, it has included additional prayer halls, meditation centres, Dharma classrooms, a Museum and an large space for communal festivities during key dates in the Buddhist calendar.





Site context

Located on the small plot of land on top of a hill site, the temple, with its golden roof and soaring Stupas is a distinctive icon, visible from its northern and eastern low lying neighbourhood . The temple back against a high way on its west side while its south side faces a strip lush vegetation on a vacant plot of State land.

Design approach

At the onset of the project, the client had specifically requested that the temple extension should aspire to not to follow the architectural traditions of Thai temples but rather be a "reflection " of it. The design for the extension block is developed from the narrative of the Buddha attaining his Enlightenment while meditating under a Bodhi tree. Conceptually, the Bodhi Tree can be considered as the original House of the Buddha and the idea of a tree as a one that shelters, protects and nurtures springs forth as a key notion of our proposed threefold architectural strategy. The new structure would also necessarily form a frame that defines boundaries of a space/ form of a void as suggested by common visuals of the Buddha meditating below the Boddhi Tree where the tree is essentially a frame. The void space would also inform the absence of the existing Stupa which would be removed eventually.

Strategy 1 – V-shaped planning

Taking on a "V" shaped plan that back against the highway, the design of the new building frames a large front courtyard space that can hold major religious communal festivities. The branching off of either wing of the V shaped plan accommodates the various program as required on various levels. Systematically, the programmatic requirements is arranged and distributed in various levels accordance to the notion that traces the growth of a Buddhist based on the following: 1. Discovery 2. Learning 3. Meditation 4. Sermon/Discourse



Strategy 2 – Fragmentation and displacement of volumes

To emphasise the hierarchy associated with the above, either wing of the new block comprises staggered arrangement of displaced and sometimes cantilevered boxes that is supported by skewed buttress like columns. Accentuating this volumetric displacement is a play of solidness and transparency applied on the envelope of the volumes. For example, the meditation hall at the 4th floor is loft space enclosed by openable glass panels that allow maximised natural light and views out to the green terraces beyond. Sky gardens, long planters are also integrated into envelope design of the building to allow "break up" the building and allow for much greenery. This gives the illusion of an urban "tree" building, one that would offer a visual relief to the residents nearby.

Strategy 3 – Fenestration

Abstraction of light filtering through the gaps between the leaves of the Bodhi tree are necessarily mapped onto the facade to create an organic random pattern of triangular windows. While seemingly random, the position and size of windows are actually tabulated in relation to the degree for natural lighting as required to by the interior space. The constant changing and dramatic of play of light and shadow through these windows can be best experienced in the Prayer Halls, reminding oneself that change and impermanence of life is the only constant.



“ Inspiration can come from everywhere, one just have to quieten the unconscious chattering in the mind, be present at that moment and observe the beautiful changing quality of light filtering through the moving leaves of Bodhi tree in the gentle breeze. That was the fleeting moment that inspire Wat Ananda Architecture.

– Carl Lim, Director, Czarl Architects

PROJECT DATA

Project: Wat Ananda Metyarama Thai Buddhist Temple
Location: 50B Jalan Bukit Merah, Singapore 169545
Client: Wat Ananda Metyarama Thai Buddhist Temple
Architect Firm: Czarl Architects
Type: Thai Buddhist Temple
Gross Floor Area: 1526.69 square metres
Completion: November 2014
Photographs: © MingFu Weng



New Feyenoord Academy and Sports Club Feyenoord gets gold-coloured roof

In August 2018, construction has started for the new Feyenoord Academy and Sports Club Feyenoord. Both Feyenoord organisations will use the new building. MoederscheimMoonen Architects has developed the design for the building for both Feyenoord users, where professional football, leisure and sports experiences come together. The completion of the complex is planned for mid-2019.

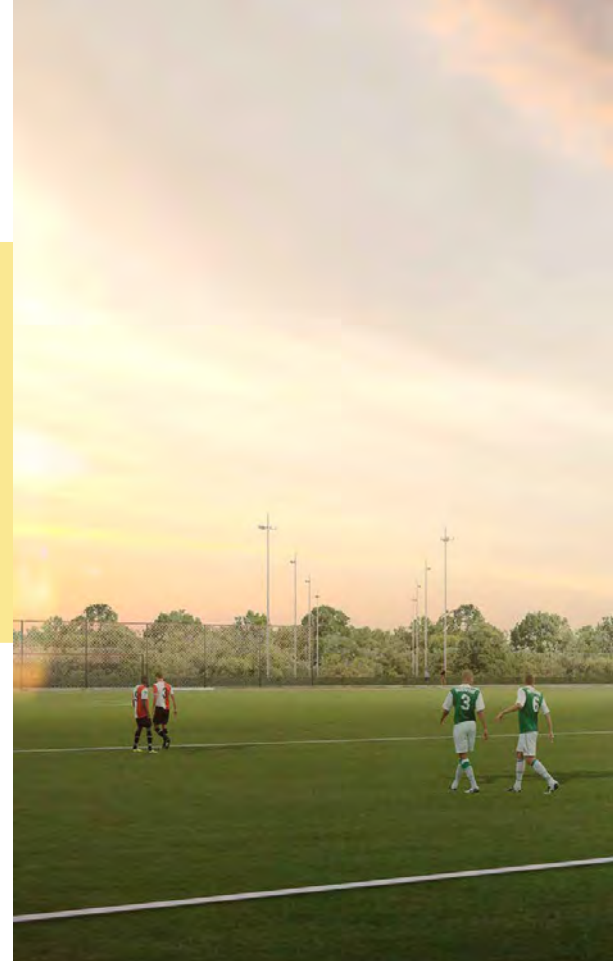
A competitive place

The new building will become one of Sportcampus Varkenoord's innovators. In addition to housing the Feyenoord Academy and Sports Club Feyenoord,

the building will become an important venue for matches of the U23 and other Feyenoord teams. Hence, the building will be equipped with a covered tribune consisting of 1100 seats.

Optimal shared usage

The facilities are clearly structured with the dressing facilities, medical rooms and sports areas situated on the ground floor. The first floor holds offices, study rooms, multifunctional rooms, a large canteen for the Sports Club and a separate restaurant and player's lounge for the Feyenoord Academy. Both organisations have their own personal entrance; the Feyenoord



Academy enters through the centre of the building whereas the Sports Club Feyenoord uses the south side entrance which is connected to the terrace. From the central entrance, the functions on each side are distributed per user, but in use, rooms will be shared regularly.





SOUTH FACADE



NORTH FACADE

0m 1m 5m 10m 20m

A powerful gold roof

The image-defining element of the building is the generously designed gold-coloured roof. The roof ensures that the entire gallery is covered and gives the building an all-round character through its cantilevers. The floor plate has also been designed in a powerful way, as a gold-coloured disc. This platform provides exterior circulation around the building, where many people will gather, either on the terrace or the walkway above the tribune. The design is further characterised by symmetry and an unambiguous building structure. Between these gold layers, the façade has been designed with steel panels. These create verticality in the façade

and give the building depth and texture.

Space for sports and games

Around the building there are various types of football fields, training zones and sports and play areas, which are also situated around the entrance square. The composition of the forecourt anticipates the symmetry of the total design; spacious footpaths lead to the entrances and are surrounded by attractive green areas.

Energy-neutral

Regarding sustainability, the building has become 90 percent more energy-efficient than required by building regulations. All measures taken for this will ensure that the building will become energy-neutral.

PROJECT DATA

Project: Feyenoord Academy and Sports Club Feyenoord

Location: Rotterdam, The Netherlands

Client: Feyenoord N.V.

Architect Firm:

MoederscheimMoonen Architects

Size: 4,000 square metres

Definitive Design: February 2018

Delivery: Start construction in August 2018

Completion: Mid 2019

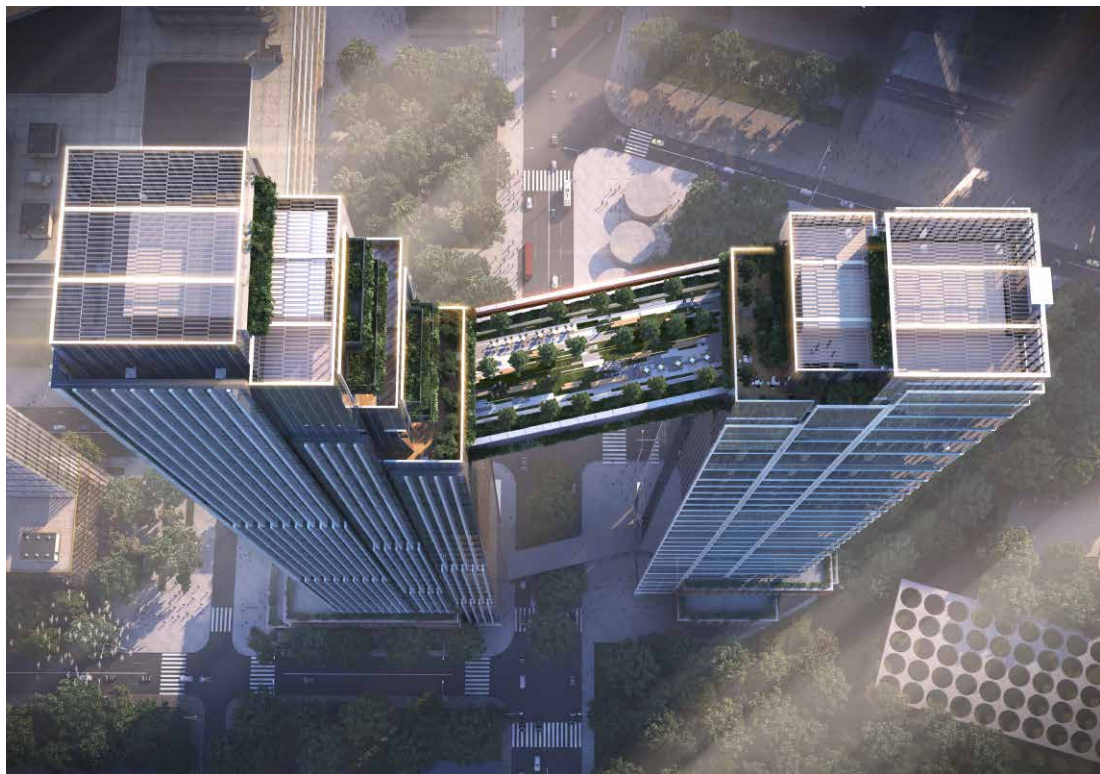
Photos: © MoederscheimMoonen Architects



New Huabang International Centre designed with twin sky deck towers

1 0 DESIGN has created a new iconic destination for Huabang Holdings right in the heart of the Pazhou district, an important new CBD which will be developed to lead the City of Guangzhou into an international innovation and technology centre. This exciting new district will become a new home to many internationally renowned e-commerce giants like Tencent, Alibaba and Xiaomi.

10 DESIGN is Design Architect for this landmark building, 'Huabang International Centre'. It is a twin tower development linked by a public sky deck, rising 130 metres in height above Pazhou. One of the towers will be trade-marked as Huabang Headquarters whilst the other tower will accommodate a five star hotel and serviced apartment, totaling approximately 90,000 square metres gross floor area. The development is scheduled to welcome its office tenants and hotel guests by 2020.





The sky deck towers are prominently positioned with its north fronting along the Zhujiang River providing views to the CBD of the Haizhu district and the central axis of Guangzhou. It also sits in close proximity to the Zhujiang Brewery Heritage Park, a successfully established regeneration project – home to a vibrant community of entertainment, culture, restaurants, and bars.

To maximise the valuable qualities of the site, 10 DESIGN has created a signature urban statement, an elevated public space where one can enjoy a spectacular view across the river to the striking skyline of Guangzhou. The sky deck provides a wide range of amenities for public enjoyment including al fresco dining, a city park, an observatory deck, and a city art gallery.

Design Partner, Nick Cordingley added: "Rising above the sky deck is the 'vertical green valley', the inspiration of which unifies the two towers with a series of stepping green terraces cascading towards the bridge, unifying the overall composition. The stepping terraces at the upper level then set the rhythm of the main facades of the two towers, allowing the vertical lines to be articulated in the face of the façade."

The composition is a unified series of vertical surfaces which visually support the delicate horizontal of the bridge. The vertical and the horizontal lines of the overall composition come together in harmony. The subtle glazing textures within the vertical planes are simple to allow the strength of the outer composition to be legible when viewed from the CBD across the river.

The Huabang International Centre will provide a vibrant and dynamic workplace and public destination to the internationally recognised Pazhou district.



PROJECT DATA

Project: Huabang International Centre

Location: Guangzhou, China

Client: Huabang Holdings

Architect Firm: 10 DESIGN

Gross Floor Area: 90,000 square metres

Completion: 2020

Photos: © 10 DESIGN



Petal-shaped roof is a winning bet for Victoria Racing Club – Club Stand

Leading Australian architecture and interior design practice, Bates Smart Architects Pty Ltd unveiled The Club Stand for the Victoria Racing Club (VRC), a new centrepiece at Flemington Racecourse that is home to the internationally renowned Lexus Melbourne Cup, the 'race that stops a nation'™. The practice was engaged by the VRC in 2012 to design the new \$128 million grandstand and hospitality facility with a gross floor area of 12,967 square metres. The five-level Club Stand sets a new benchmark for racecourse facilities and represents the 10th grandstand to be built at Flemington since 1865.

Design inspiration

The design draws inspiration from the shape of the iconic racetrack, adorned by its much-loved rose gardens. A signature feature of the project is the 'petal' projections which form the perimeter of the Club Stand at each floor. These were constructed using 90 precast panels each weighing up to 30 tonnes.



Bates Smart Director Kristen Whittle

Bates Smart Director Kristen Whittle, who led the design for the architectural team, said: "The highly sculptural curvilinear form of the building with its tilting sunshade and tiered seating will create an immersive 'in-the-round' experience for members and their guests who will enjoy each of the beautifully curated venues with impressive views of the race track."

The Club Stand is designed to celebrate the rich history and character of Flemington Racecourse giving the heritage racecourse new relevance whilst continuing the traditions of racing. Its sweeping sculptural form is a focal point for the venue, offering connectivity to and 360-degree views of the Mounting Yard, race track, Members Lawn, Parade Ring, Betting Ring and Winning Post.

VRC Chairman Amanda Elliott said the new Club Stand embodies the rich tradition and legacy of the Club, while championing its evolution: "Bates Smart has designed an exceptional building with unique spaces that deliver an unrivalled race day experience for VRC Members and their guests.

The perimeter of The Club Stand features floor-to-ceiling glazing that is treated as frameless walls. This concept is brought within with curved full-height glass dividing walls so there is visibility through the building. The principle white ceilings are curved to mimic the underside and the balconies of the external façade to bring the architectural expression within. A key driver of the design was to create opportunities to improve sightlines to the race-track and to ensure the floor plate



remains flexible to accommodate any alternations to meet future needs. The Club Stand significantly increases the capacity for the VRC with unprecedented sightlines as well as broadening the offer of unique premium bars and restaurants for Members.

Interior design provides seamless transition

Interior venues are defined by transparent thresholds. Seamless glass screens grow out of the architectural facades on each level to create elegant, curvilinear bay windows. Thresholds between the interior spaces, the terraces and the circulation

spaces 'dissolve', continuing the theme of transparency, while providing outstanding sightlines to the track.

Bates Smart Director Jeff Copolov, who was responsible for the interior design, said: "It was important to create a seamless transition from the exterior architecture to the interior spaces to ensure a premium race day experience for members, offering a cohesive and consistent design language from the outside in. Every detail has been carefully considered to minimise the impact on the views and expand the extraordinary frameless glass floor-to-ceiling perimeter."





Roof design comprises roof garden

The Club Stand is crowned by the roof garden, providing patrons with exceptional views on both the race course and Melbourne's city skyline. The roof garden offers landscaped areas with open enclosed beneath canopies, a signature design element of The Club Stand's architecture.

The inspiration for the roof of the new Club Stand at Flemington Racecourse came at the same time as the whole building, from the Flemington Gardens and its roses and the refined, flamboyant, sculptural fascinators worn by the female race going fraternity. Since the beginning of the Flemington races, which date back to the 1840's and to the beginnings of Melbourne itself, it has always been tradition for people to dress up. It brings enormous joy to the event and is now synonymous with the annual Spring Racing Carnival.

The petal-shaped roof rises up in two layers: Firstly, from the encircling scalloped shapes of the fabric rain parapet and shade cover which sit above the roof pavilion dining spaces. Above this are the three oval fabric discs, completely wrapped top and bottom with a 100 percent naturally

finished woven heavyweight cloth. These fabric roof awnings have their origins in the racecourse architecture of England and the white garden sailcloth tradition from which all racecourse architecture stems. Their shape resonates with the abstract, sculptural provenance of early 20th century modernist sculptures by the likes of Naum Gabo, which always served as a link to the dynamic language of the entire building. All the fabric awnings are stretched manually around steel truss frames modelled in Rhino. Steel was fabricated from these 3D model drawings and fabric attached and tensioned directly on site.

"On the top of the largest petal is the new and revitalised Victoria Racing Club logo which is a strong wayfinding device and no doubt will be captured by the helicopter crews covering the race," said Kristen Whittle.

To further improve circulation, a new external walkway on the first-floor wraps around The Club Stand and is connected to the existing Members Grandstand and Parade Ring. A new north-south corridor forms the heart of the new Club Stand and links the Betting Ring with the Members Lawn and Mounting Yard.

The Members Lawn is linked to the signature bars located on the first floor of The Club Stand through a grand sloping tier of low seating, which will encompass viewing platforms and cascading gardens. This space provides a seamless connection between inside and outside environments, creating an elevated experience for Members.

Bates Smart was also responsible for the design of The Betting Ring, a key element to the theatre and excitement of race day, as well as an important arrival experience at the racecourse. The design of the Betting Ring creates a series of new pavilions for the traditional bookmakers. The curved form of the canopies, along with their elegant profile continues the curvilinear form of the building out into the forecourt. The pavilion canopies also provide a covered entry for Members before their arrival into The Club Stand.

PROJECT DATA

Project: Club Stand at Victoria Racing Club

Location: Melbourne, Australia

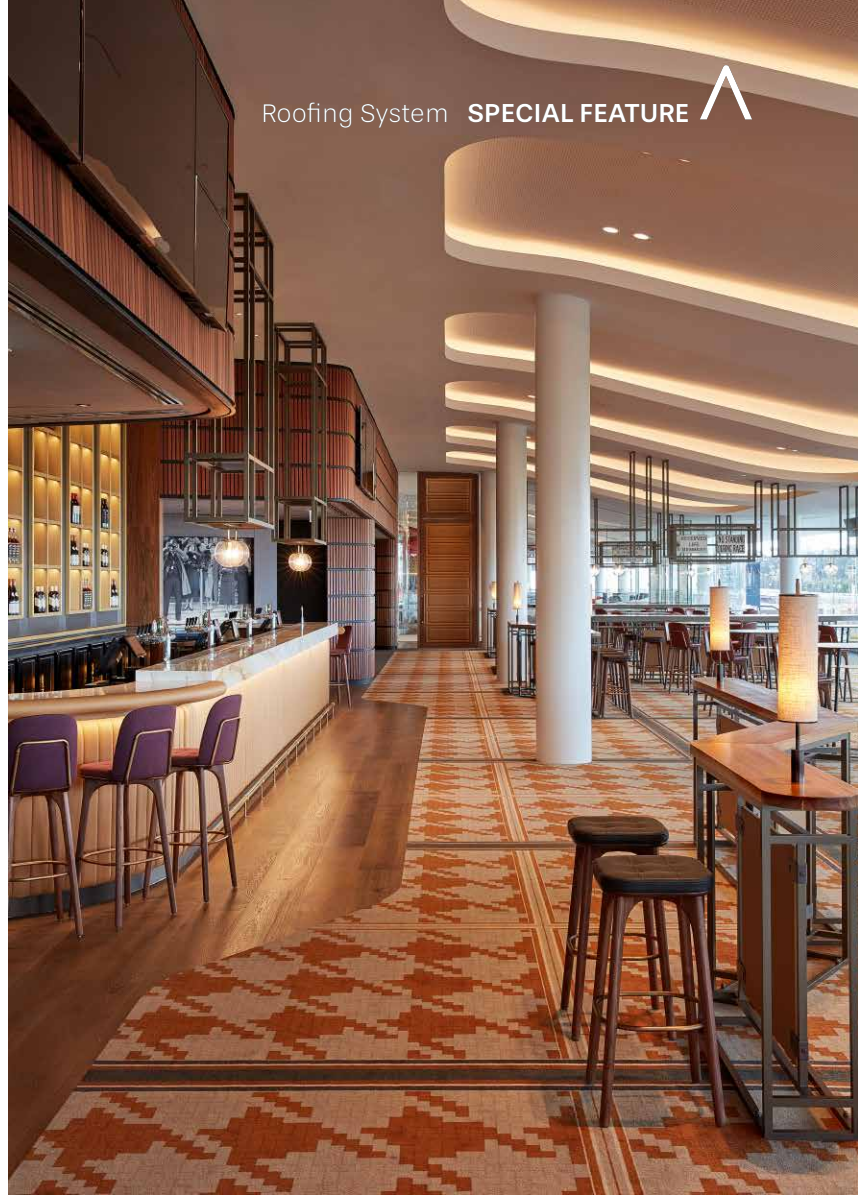
Client: Victoria Racing Club

Architect Firm: Bates Smart Architects Pty Ltd

Gross Floor Area: 12,967 square metres

Completion: September 2018

Photos: © Bates Smart Architects Pty Ltd



“Architectural design which takes into consideration of the environment is a responsive design”:

An Interview with Mary Chan, Head of Sustainable Building Design and Assistant Director at DLN Architects Limited



Mary Chan. Photo: © DLN Architects Limited

Ms Mary Chan, Head of Sustainable Building Design and Assistant Director at DLN Architects Limited, Hong Kong, was given the *Women in Green Building Leadership Award*, a new category at the World Green Building Council's (WorldGBC) Asia Pacific Leadership in Green Building Awards 2018. Ms Mary Chan is the first winner of this award and in this interview she tells us more about herself and her work.

SEAB: Congratulations! As the first ever winner of this Award, what does this award mean to you personally?

MARY: I am most honoured to be the first winner of the Women in Green Building Leadership Award. This is an important recognition of my work in green buildings and sustainable design as well as my work in the advancement of green buildings through public engagement and collaboration with other professionals at the Hong Kong Green Building Council and the Environment and Sustainable Development Committee of the Hong Kong Institute of Architects. This award is also the recognition of all these professionals' contribution to the advancement of green buildings in Hong Kong.

As an architect from Hong Kong, I am also excited that our dedication in the advancement of green buildings in Hong Kong has gained international recognition, with me as the representative.

SEAB: Can you share with us briefly your work history?

MARY: I have been an architect for nearly three decades,

and have lived and worked in various countries including Hong Kong, Canada and Singapore. I am currently the Head of Sustainable Building Research and Assistant Director of DLN Architects Limited.

I was a graduate of the University of Hong Kong where I obtained the Bachelor of Architecture (Distinction) degree. I was also a graduate of the National University of Singapore for my Master of Science (Real Estate) degree. With such multi-disciplinary training, I always look at green buildings in a holistic way where sustainability needs to address environmental, social as well as economic aspects in a balanced perspective in order to create a win-win situation.

SEAB: What is your role as the Head of Sustainable Building Research and Assistant Director at DLN Architects Limited, Hong Kong?

MARY: In my role as Head of Sustainable Building Research of DLN Architects Limited, I have driven the company's focus towards sustainable design. I provide leadership and support for the implementation of sustainable design for our projects. I am also in charge of training for colleagues to boost their knowledge in green buildings. In the past, I have arranged staff training sessions on environmental analysis and Building Information Modelling (BIM). Green building professional training for BEAM Professionals and GBL Managers were also organised. As a result, DLN has expanded its practice on sustainable design and development leading to many green

building projects and awards.

In my capacity as Assistant Director, I am involved as the project architect and sustainability advisor for many projects as well.

For building projects that target to obtain green building certifications, I will help to ensure the project achieve the certification standard. Even for building projects without client's requirement to obtain any green building certification, I always try to include sustainable design where possible and encourage the client to adopt some green building strategies that will not incur much additional construction cost.

SEAB: We understand that you are a strong advocate of green buildings in both your professional and personal endeavours. How did your interest in green buildings start?

MARY: My interest in green buildings started when I was living in Canada, where I first became a LEED Accredited Professional. The environment in Canada is very beautiful and the people have great respect for the environment. This is evident in their everyday life and is reflected in their government policies as well. I was the Chair of the Community Engagement Committee, Co-Chair of the Outreach Committee and Member of the Steering Committee of the Cascadia Region Green Building Council (Vancouver Branch) in Canada. I was fortunate to have worked with many green building leaders and professionals there to advocate for the advancement of green buildings.

800 Thomson Road in Singapore, a project by DLN Architects Limited.
Photo: © DLN Architects Limited





Heya Aqua in Hong Kong by DLN Architects Limited. Photo: © DLN Architects Limited

“I think the major challenge for a woman architect is the need for her to carry out all the duties of an architect, same as any other architect, plus all the duties that is expected.” – Ms Mary Chan

SEAB: What are some of the green building designs and practices that you are advocating for and why?

MARY: As an architect, I always advocate for the use of architectural design to achieve green building objectives first. I believe the use of green strategies through passive design provides added value to buildings without the high costs of high performance equipment and installation.

Architectural design which takes into consideration of the environment is a responsive design. Design should be site and climate specific. It can be simple and cost effective. For example, simple design strategy of minimising the glazing area on the wall facing the west can help to minimise glare as well as reduce solar heat gain, leading to reduced cooling load and lower air-conditioning energy consumption.

As climate change is causing more extreme weather such as flood, storm and drought, appropriate design and implementation of strategies to prepare buildings and cities for extreme weather are also important. Longevity of a building, and the safety and well-being of the occupants are all important consideration of sustainability.

The whole neighbourhood and the whole city need to be green too since each building's performance is affected by its surrounding built environment. The adequacy of fresh air is particularly important. As cities and population continue to grow, increased traffic brings congestion on the roads and emissions from vehicles increase pollution in cities, affecting the health and well-being of the dwellers. Green buildings and green neighbourhood design are important to minimize the reliance of motor vehicles and to make the neighbourhood more walkable.

Greenery on a single building helps to reduce urban heat island at



Aberdeen Fishing Village, a project by DLN Architects Limited.
Photo: © DLN Architects Limited



Double Cove in Hong Kong by DLN Architects Limited. Photo: © DLN Architects Limited

that building only. If the neighbourhood is still a concrete jungle, the overall environment will still be undesirable. I believe that the whole neighbourhood and the whole city should be viewed in a holistic manner with a multi-layer three dimensional approach to achieve an overall green city environment.

I also advocate for placing importance on green interiors where design and choice of materials, indoor environmental quality etc. affect the occupants' health and well-being as well as energy consumption. For example, the simple use of lighter colour finishes on interior surfaces will be able to reflect light more effectively, reducing the use of artificial light and reducing energy consumption. Dark colour interiors will require more artificial light to achieve similar brightness and will increase energy consumption. Choice of interior finishes with no volatile organic compound (VOC) will help to provide a

healthier indoor environment as well.

Design for safety in use, operation and maintenance is important. This means that design team will need to work closely with the users, operation and maintenance team during design stage.

Building design is a combination of art and technology, with due consideration for people as well as the building's effect on and interaction with the environment. Like any science and technology, continuous study and research as well as gathering of data and feedback from users and operators are important for the advancement of green buildings.

SEAB: In Hong Kong, you have spearheaded the early development of green buildings as well as public education to promote green practices. Can you share with us some of your efforts that have yielded results or have

been implemented across the country?

MARY: I was the past Chairman and Member of the Public Education Committee of the Hong Kong Green Building Council. Currently, I serve as a Director of the Hong Kong Green Building Council.

Built upon my experience of public engagement from Canada, I spearheaded the launch of "My Green Space" for the Hong Kong Green Building Council, a green building competition for schools for primary school and secondary school students.

"My Green Space" provides opportunity for students to learn and freely design their own green space ranging from their home to school, restaurant, library, museum, as well as complete neighbourhood. Some students even made enquiries to government departments and created proposals to upgrade and improve their neighbourhood. "My Green Space"



to the endless effort of the Hong Kong Green Building Council in the advocacy towards government regulators to encourage more green building development.

As the Deputy Chairman of the Environment and Sustainable Development Committee and Member of the Board of Local Affairs as well as a former Council Member of the Hong Kong Institute of Architects, I have relentlessly advocated for the advancement of green buildings to government departments regarding building regulations and policies, as well as reviewed and provided input to green building certification standards.

I have also led a team of consultants in the development of the Hong Kong Green Shop Guide and the Hong Kong Green Office Guide for the Hong Kong Green Building Council as well as served as the advisor for their Hong Kong Green School Guide.

SEAB: Architects face many challenges every single day. But do female architects face any added obstacles or challenges in their work? What kind of experience have you had so far?

MARY: The training of architects and the work of architects are the same for women and men. We have to be involved in design, production of drawings, submission to authorities and administration of construction contracts. During construction stage, we also need to carry out site inspections and coordination with other project team members such as client, engineers, other consultants and the contractors.

I think the major challenge for a woman architect is the need for her to carry out all the duties of an architect, same as any other architect, plus all the duties that is expected of her as a wife and mother at home which are often just as challenging as work.

It has been a phenomenon that although there are many women who studied architecture in the university, the subsequent number of women who continue to practice as an architect eventually declines. I think that the consideration of placing family as priority of life may have contributed to this phenomenon.

I, myself have faced such tough challenges too. In order to continue

working as an architect and take good care of my family at the same time, I need to put in double effort to do both jobs well. I am very grateful that my late husband Francis Yan, former Managing Director of BTA Asia Limited (Hong Kong office of award-winning Canadian architect firm Revery Architecture), was a great architect himself and he had always been supportive to me, sharing our family duties together and sharing our passion in architecture together.

SEAB: What advice would you give to women architects who want to excel in this field?

MARY: To women architects and women who aspire to become architects, my advice is as follows:

- Do not worry who you are but focus on what you can do.
- Follow your heart, but be guided by your brain.
- Women are as capable as men. We are equal in our ability.
- We do not need to act like men as women are unique the way we are.
- If we walk slower, it is because we want to take the time to see things in greater detail and take the time to think about the solution to problems found.
- If we are soft spoken, it is because we have patience to listen and understand.
- If we did not shout to make our case, it is because the fact rather than the noise proves itself.
- We are confident and firm. We establish our authority by our actual contribution to the project – solve problems rather than create confrontation.
- We are good team players. We can lead and we can collaborate.
- Women tend to be sensitive, because we are genetically made to care for others and we can understand the need of others. Our caring heart helps us to think about how people use our buildings and how our buildings affect people.
- We need a supportive family so we can do our job as an architect and fulfill our role as a wife and mother when we are married, and be the caring daughter for our aging parents. We do not need to sacrifice one thing for the other.

has grown into a leadership training platform to nurture our young citizens to be future green building leaders.

As Hong Kong has the reputation as a shopping paradise, I have also spearheaded the establishment of Hong Kong Green Shop Alliance for the Hong Kong Green Building Council which has become an important network for shopping malls, shop owners and operators to promote sustainable best practice, with the hope to foster a greener shopping environment which will have positive impact to local and international shops and shoppers. The government has also made use of this network to promote environmental policies. The Hong Kong Green Shop Alliance comprises of 23 developers and 132 shopping malls up to present.

As an active member of many task forces and committees as well as a Director of the Hong Kong Green Building Council, I have contributed

“Wilson Associates’ strong legacy can be summed up on one word: **PEOPLE**”:

**An Interview with Beth Campbell,
new CEO of Wilson Associates**



Beth Campbell. Photo: © Wilson Associates

On 20 August 2018, global interior architecture firm Wilson Associates appointed Beth Campbell as its new Chief Executive Officer.

Graduated from Kent State University with a Bachelor of Architecture degree and from Golden Gate University with a Master of Business Administration degree, in addition to being LEED certified and a registered architect, Campbell will be based in Wilson Associates' Los Angeles office. With more than 25 years of experience in global design, she is a highly strategic leader who will bring passion and innovation to build upon Wilson Associates' global reputation for excellence. In an interview with SEAB, Beth talks about her new role and how she plans to make the firm more innovative and competitive.

SEAB: Congratulations on your recent appointment as Chief Executive Officer of Wilson Associates. You have more than 25 years of experience in global design. Please share with us your journey so far as an architect and now as a CEO.

BETH: I have had the great fortune to work with some amazing clients over my architectural career. With these relationships I have been able to express my passion for design excellence around the globe. With my extreme desire to learn and grow, I have built a skill set of global business, design and executive coaching that have served me very well in honing my craft. Bringing to bear my passion for design, my appreciation for global cultures, and my in-depth industry knowledge will allow us to continue to build on the legacy of Wilson Associates.

SEAB: Please tell us more about your new role at Wilson Associates, elaborating your plans to make the company more innovative and competitive.

BETH: I am both honoured and excited to be joining the ranks of the Wilson Associates family. Wilson has such a strong reputation in the Design World, built upon a strong legacy of incredible design solutions around the globe. Compounding our Board's desire to have a designer lead the team, I will be focused on reinforcing the global culture while bolstering our client relationships to foster deeper avenues to express the established design and innovation passion.

At our core we are designers. We build upon our existing strengths to curate design solutions that foster engagement, creating built environments that truly appreciate our guests' needs and the ever-growing demands on their time. Our purpose and work will be centered on Clients and Great Design.

SEAB: Wilson Architects has been designing hospitality design for luxury and boutique brands for nearly 50 years. Could you shed some light on why the company has been so successful in this area of work?

BETH: Wilson Associates' strong legacy can be summed up on one word: PEOPLE. The founder's focus was on the talent, the clients, our partners and our communities. We are reinvigorating this focus and ensuring all passion and energy is put into bolstering our connections in all we do.

SEAB: What are some of your favorite projects by Wilson Associates and why?

BETH: The recently opened Four Seasons Hotel Kuala Lumpur in Malaysia is both visually stunning and a comfortable environment for guests. The rich, sophisticated color palette layered throughout each space with tailored details establish a sense of place and create an experience of personalized comfort, like an extension of a guest's well-appointed home.

SEAB: What are some of the challenges you think Wilson Associates will face in the future?

BETH: Outside the normal industry obstacles of The War on Talent and Price Wars that everyone is facing, we look to ensure that our design platform allows for us to tend to our Client's needs – even as "the Amazon effect" is driving everyone's standard to have little to no friction in their daily interactions. Operational efficiencies, optimized project processes, and applied data and analytics are key aspects of how our operational platform puts our clients first and our design at the forefront of all we do.

SEAB: As you look at all the countries that Wilson Associates is present in, where do you think are the bright spots? Do you think Southeast Asia, Asia Pacific and Middle East will be leading?

BETH: There are so many drivers today in our global economy, and just as many for our industry. We are watching demographic shifts, clean technologies, over tourism, and rapid innovation disrupt global development activities. We see that Asia Pacific and the Middle East will continue to lead the development and project growth models for the foreseeable future.



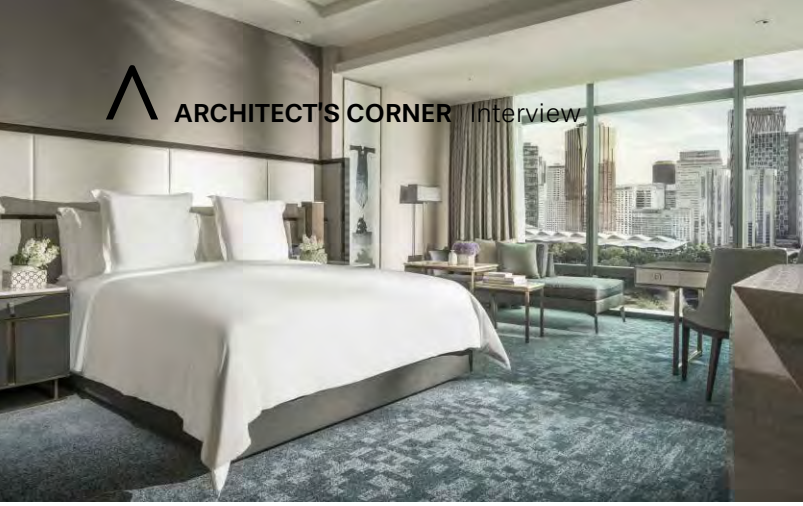
Huafa Guanggang Showflats and Sales Center in Guangzhou, China. By creating very individual and intriguing pieces throughout the space and balancing those with a well-crafted modern interpretation of a classical architectural language, the Huafa Guanggang Showflats and Sales Center reflect an atmosphere of luxe and glamour. Wilson Associates has created a contemporary interpretation of a modern yet classic interior architecture with strong emphasis on black and white contrasting hues. A collection of contemporary furniture pieces was curated to show a bold sense of taste for a discerning clientele, and gives prominence to textures and tactile experiences with intuitive detailing. *Photos: © Wilson Associates*





Elysium Hotel in Paphos, Cyprus. Embracing Elysium Hotel's original architecture, Wilson Associates thoughtfully designed around the property's palatial style which was influenced by the Byzantine era. The existing architectural elements of the lobby, for example, are now enhanced with a blend of local stone, marble and timber; warm muted colors with pops of blues and fuchsia tones reflective of the sea and flowering foliage; decorative features such as mosaics, arches and columns; and luxurious contemporary furniture further enriching the palatial interior. *Photos: © Wilson Associates*





Four Seasons Hotel in Kuala Lumpur, Malaysia. Wilson Associates took advantage of the Four Seasons hotel's exotic location, selecting materials and finishes to reflect the local culture yet exuding understated sophistication. The interiors are light, spacious and have an open feel with soft tones which combine well with the luxurious, warm-metal finishes. The intention of the design is to present guests with a sense of personalized comfort and the essence of belonging.

From the public areas to the rooms, Wilson Associates approached the design through the eyes and expectations of a well-travelled and seasoned guest. *Photos: Wilson Associates*



guangzhou electrical building technology

Asia's premier platform for the
electrical engineering, intelligent building
and smart home markets

9 – 12 June 2019

China Import and Export Fair Complex
Guangzhou, China

www.building.messefrankfurt.com.cn

Contact

Messe Frankfurt (HK) Ltd

Tel: +852 2238 9961

Fax: +852 2519 6079

building@china.messefrankfurt.com



Official website



光亞 · Guang ya

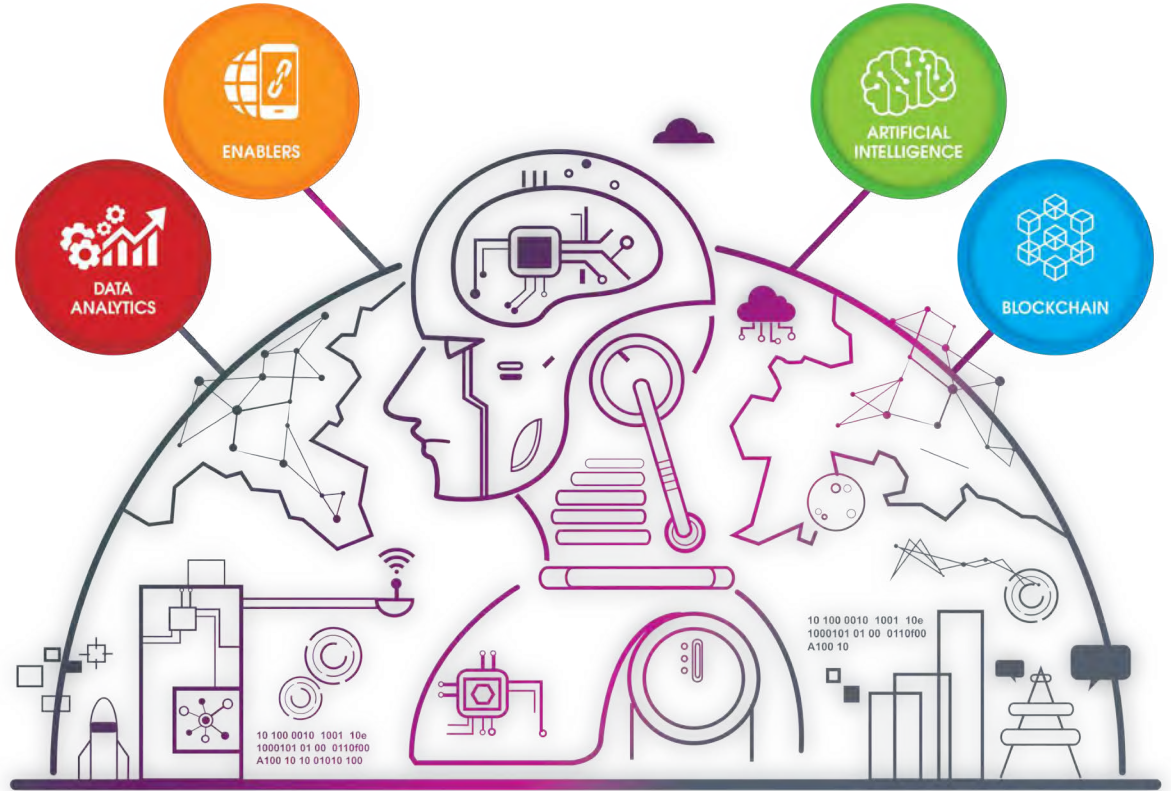


messe frankfurt

IoT ASIA | 27-28 March 2019

Hall 1, Singapore EXPO

INTERNATIONAL EXHIBITION & CONFERENCE ON THE INTERNET OF THINGS
TRANSFORMING BUSINESSES, GOVERNMENT AND SOCIETIES



SHOWCASE your latest innovations and strengthen your business partnerships



BUILD Value Chains across the IoT Ecosystem



GAIN key insights from best practices and case studies from Industry Leaders

Artificial Intelligence
Blockchain
Data Analytics
Enablers

BUILDING VALUE CHAINS

SMART CITIES // INDUSTRIAL IoT

Enablers
Artificial Intelligence
Data Analytics
Blockchain
Artificial Intelligence
Data Analytics

ENABLERS

Artificial Intelligence Data Analytics Blockchain Data Analytics
Blockchain Artificial Intelligence Data Analytics Blockchain

ARTIFICIAL INTELLIGENCE

Artificial Intelligence Data Analytics Enablers Blockchain Data Analytics Artificial Intelligence Data Analytics Enablers

DATA ANALYTICS

Data Analytics Blockchain Artificial Intelligence
Blockchain Artificial Intelligence Data Analytics Enablers

BLOCKCHAIN

Artificial Intelligence Data Analytics Blockchain Data Analytics Artificial Intelligence

JOIN US AT THE 6TH EDITION OF IoT ASIA 2019
Interested to Exhibit or Sponsor? Contact us at sales.iotasia@singex.com

www.internetofthingsasia.com • #iotasia

Organised by



Industry Accolades





**KOREA
BUILD**

2019 **Since 1986**
KOREA BUILD

2.20(Wed) ▶ 2.24(Sun) KINTEX, Seoul

**The first, largest
and the oldest Building Exhibition in Korea**

When
February 20th ~ 24th, 2019

Where
KINTEX, Seoul, Korea

Exhibits

Building Material(Interior & Exterior) / Structural Materials / Air Conditioning & Heating & Ventilation Equipment / Sanitary Items / Coating & Waterproof Materials / Tools & Equipment / Gardening & Public Facilities / Lighting & Electrical Installation Materials / IoT & Home Security / Housing Plan / Housing information / Windows and Doors / Home Interior

eSang NETWORKS koreabuild@e-sang.net

Booth inquires kbuild@gbexhibition.com, 82-2-6671-0736



MBAM ONEBUILD
 Malaysia International
 Construction & Infrastructure Technology
 Exhibition & Conference

CONSTRUCTION INDUSTRY EXHIBITION & CONFERENCE

BRINGING CONSTRUCTION INDUSTRY UNDER ONE ROOF



13 ▶ 15
NOVEMBER 2018
KL CONVENTION CENTRE
KUALA LUMPUR, MALAYSIA

Endorsed by



Incorporation



Supported by



In conjunction with



Organized By

MBAM OneBuild Sdn Bhd (1249806-U)

No. 2-2, Jalan 2/109E, Desa Business Park, 58100 Wilayah Persekutuan Kuala Lumpur.

Tel: +603-7984 8636 / +603-7987 1668 Fax: +603-7982 6811 / +603-7987 2668 Email: info@mbamonebuild.com Web: www.mbamonebuild.com






MEGA BUILD

INDONESIA

The 18th Indonesian
Dedicated
Architecture, Interior
Design, Building
Materials Exhibition &
Conference

14 - 17 March | Jakarta
2019 | Convention
Center

www.megabuild.co.id

 megabuildID
 Megabuild Expo
 megabuildexpo

EXHIBITOR PROFILES

The perfect one-stop platform that showcase a full range of building materials, design solutions, systems and technology for the fast growing Building & Construction Industry in Indonesia.

- Roof & Flooring
- Doors & Windows
- Bathroom & Kitchen
- Design Lighting
- HVAC+ M&E
- Security & Fire Safety
- Landscape
- Building Materials
- Construction Materials
- Interior Furnishing
- Keramika - World of Ceramics
- Keramika - World of Technology

Our 2018 Achievements



				
38,394	387	40,000	20	543
Visitors	Exhibiting Companies	Sqm of exhibition space	Countries	Successful meetings facilitated

PROGRAMMES & ACTIVITIES



Opening Ceremony

Trade Exhibition

New Product Presentation

Business Matching

Talk Show

FOR MORE INFO & BOOKING :

 megabuild@reedpanorama.com

Organised by :

Co-Located with :

Media Partners :

























THE PHILIPPINES' NO. 1

BUILDING & CONSTRUCTION SHOW



PHILCONSTRUCT 2018

29th Philippine International Construction Equipment, Building Materials, Interior & Exterior
Products Exhibition and Technology Forum

NOVEMBER 8 to 11
SMX Convention Center Manila
& World Trade Center Metro Manila

ORGANIZED BY:



CO-ORGANIZED BY:



EVENT MANAGED BY:



REGISTER TO ATTEND FOR FREE
www.sydneybuildexpo.com



14 - 15 MARCH

HORDEN PAVILLION &
ROYAL HALL OF INDUSTRIES

**LEARN. NETWORK.
DO BUSINESS.**

ATTEND THE LEADING

CONSTRUCTION & DESIGN SHOW FOR SYDNEY

EVENT FEATURES

200+ EXHIBITORS | **120+ INDUSTRY SPEAKERS** | **4 CONTENT STREAMS**

5 DEDICATED ZONES



INTERESTED IN EXHIBITING? GET IN TOUCH WITH OUR TEAM:

enquiries@sydneybuildexpo.com | +61(2)800 67557 | www.sydneybuildexpo.com



THE 24TH PHILIPPINE WORLD BUILDING AND CONSTRUCTION EXPOSITION

WORLDBEX



MARCH 13 - 17, 2019

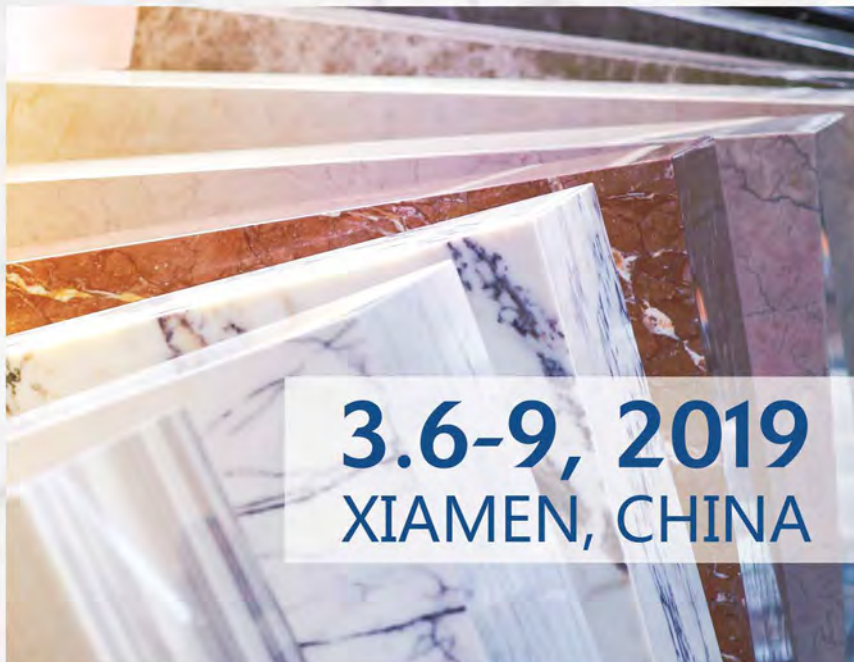
10:00 AM - 8:00 PM

**WORLD TRADE CENTER METRO MANILA
SMX CONVENTION CENTER MANILA**



THE **19th**
CHINA XIAMEN

INTERNATIONAL
STONE FAIR



Exhibition Area
180,000 m²

Exhibitors
2,000

Visitors
150,000+

**LEADING
THE GLOBAL
TRENDS**

Tel: (86)592-5959616
Fax: (86)592-5959611

Web: www.stonefair.org.cn
Email: info@stonefair.org.cn



Part of the
Super 8 Series of Events



19 - 21
March 2019

**Malaysia International Trade
And Exhibition Centre (MITEC)**

**CONSTRUCTION:
BEYOND**

2020

Organised By



UBM

www.ecobuildsea.com




Subscription Form

Fax your order today
+65 6842 2581

(Please tick in the boxes)

Southeast Asia Building



SINCE 1974

1 year (6 issues)

Singapore	S\$45.00
Malaysia / Brunei	S\$90.00
Asia	S\$140.00
America, Europe	S\$170.00
Japan, Australia, New Zealand	S\$170.00
Middle East	S\$170.00

Bathroom + Kitchen Today




SINCE 2001

1 year (4 issues)

Singapore	S\$32.00
Malaysia / Brunei	S\$65.00
Asia	S\$80.00
America, Europe	S\$130.00
Japan, Australia, New Zealand	S\$130.00
Middle East	S\$130.00

Southeast Asia Construction



SINCE 1994

1 year (6 issues)

Singapore	S\$45.00
Malaysia / Brunei	S\$90.00
Asia	S\$140.00
America, Europe	S\$170.00
Japan, Australia, New Zealand	S\$170.00
Middle East	S\$170.00

Lighting Today



SINCE 2002

1 year (4 issues)

Singapore	S\$32.00
Malaysia / Brunei	S\$65.00
Asia	S\$80.00
America, Europe	S\$130.00
Japan, Australia, New Zealand	S\$130.00
Middle East	S\$130.00

Security Solutions Today



SINCE 1992

1 year (6 issues)

Singapore	S\$45.00
Malaysia / Brunei	S\$90.00
Asia	S\$140.00
America, Europe	S\$170.00
Japan, Australia, New Zealand	S\$170.00
Middle East	S\$170.00

IMPORTANT

Please commence my subscription in _____ (month/year)

Personal Particulars

NAME: _____

POSITION: _____

COMPANY: _____

ADDRESS: _____

TEL: _____ FAX: _____

E-MAIL: _____

Professionals (choose one):

- Architect Landscape Architect Interior Designer Developer/Owner
- Property Manager Manufacturer/Supplier Engineer Others

I am sending a cheque/bank draft payable to:
Trade Link Media Pte Ltd, 101 Lorong 23, Geylang, #06-04, Prosper House, Singapore 388399
 RCB Registration no: 199204277K * GST inclusive (GST Reg. No: M2-0108708-2)

Please charge my credit card (circle one): Amex / Diner's Club

Card Number: _____ Expiry Date: _____

Name of Card Holder: _____ Signature: _____

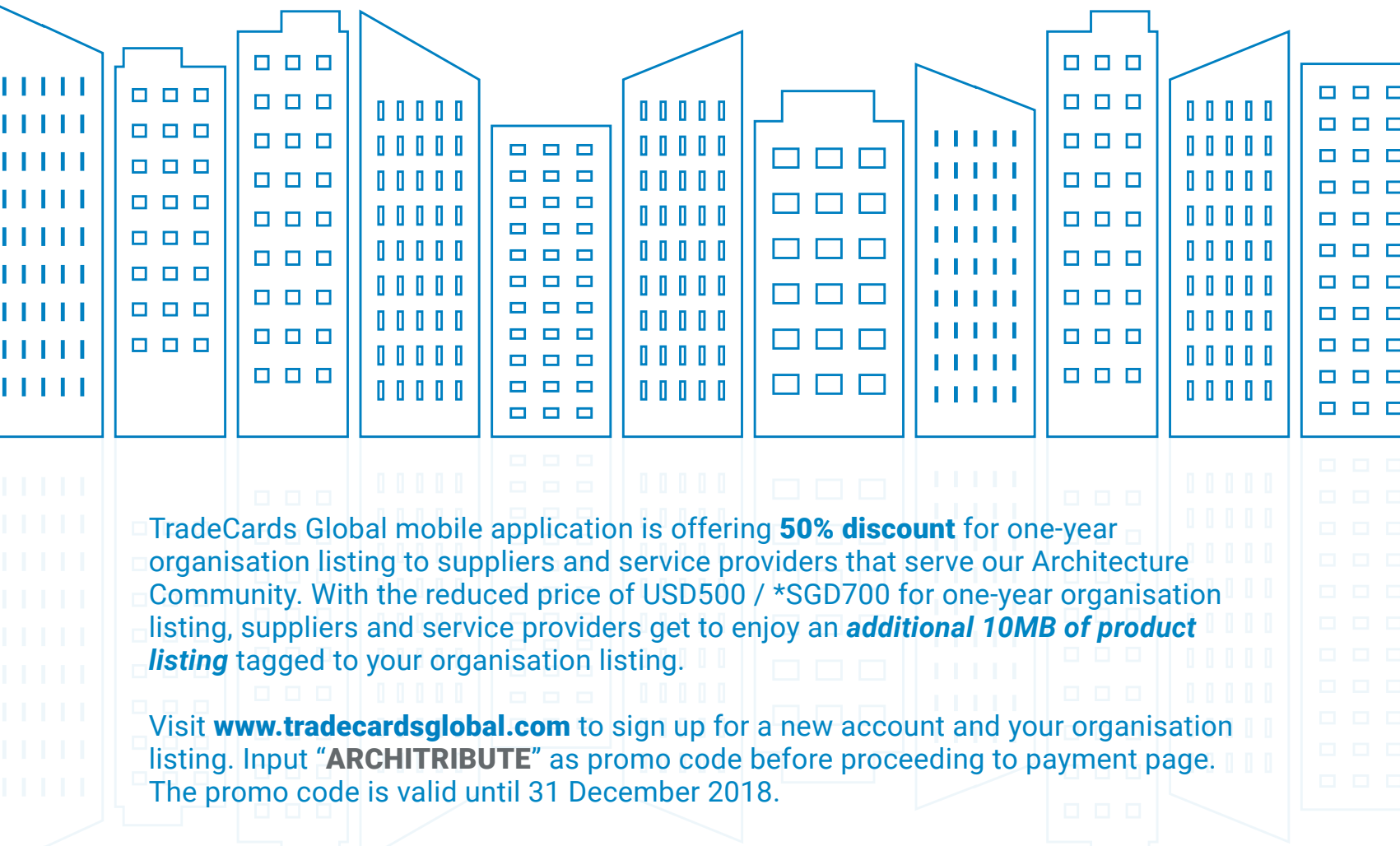
Southeast Asia Building is now on issuu!
issuu.com/southeastasiabuilding



ADVERTISERS' INDEX

BONA	3	MEGABUILD 2019	89
DORMAKABA	OBC	PARKGAMES EQUIPMENT	9
ECOBUILD SOUTHEAST ASIA 2019	94	PHILCONSTRUCT 2018	90
GEBT 2019	85	SAPA BUILDING SYSTEMS	5
GRUNDFOS	7	SHANGHAI INT'L CITY & ARCHITECTURE EXPO 2018	IFC
HUNTER DOUGLAS	1	SYDNEY BUILD 2019	91
IOT ASIA 2019	86	VICTAULIC	13
KOREA BUILD 2019	87	WORLDBEX 2019	92
MAPEI	11	XIAMEN STONE FAIR 2019	93
MBAM ONEBUILD 2018	88		

Our tribute to Architecture...



- TradeCards Global mobile application is offering **50% discount** for one-year organisation listing to suppliers and service providers that serve our Architecture Community. With the reduced price of USD500 / *SGD700 for one-year organisation listing, suppliers and service providers get to enjoy an **additional 10MB of product listing** tagged to your organisation listing.

Visit www.tradecardsglobal.com to sign up for a new account and your organisation listing. Input **"ARCHITRIBUTE"** as promo code before proceeding to payment page. The promo code is valid until 31 December 2018.

*Rate excludes 7% GST applicable for Singapore-registered companies

TRADECARDS
GLOBAL

Supporting mobile version of:

SEAB
SOUTHEAST ASIA BUILDING

SOUTHEAST ASIA
CONSTRUCTION

Security
Solutions today

bathroom
+ kitchen

lighting
today



GET IT ON
Google Play



Download on the
App Store

We have one answer to all your security issues: **100 %.**



Who has access when and to where in your company? These are questions that demand a definite answer. An answer that satisfies your security requirements and needs and gives you complete control. Opt for our master key systems with mechatronic or advanced integrated electrical engineering for a solution which provides exactly the data you need on access, time spent on the premises and security.

dormakaba offices in ASEAN:

Singapore	Tel : +65 6268 7633
Malaysia / Brunei	Tel : +603 8081 8009
Philippines	Tel : +63 2 893 4077
Indonesia	Tel : +62 21 2930 3762
Vietnam	Tel : +84 903 704172
Thailand/Cambodia/ Myanmar/Laos	Tel : +66 2059 2612

www.dormakaba.com.sg

dormakaba 